

Cisco SG500X Switches Accessories

[How to Buy](#)


This document describes the various accessory options that are available for use with the Cisco SG500X switches. These are Gigabit Ethernet and 10 Gigabit Ethernet Small Form Factor Pluggable (SFP) and SFP+ modules for copper or fiber connectivity and stacking.

Table 1. Switch Accessories for 10G/5G SFP+ Modules






Product Model	Ordering Number (SKU)	Description
10G Ethernet Fiber Transceivers		
	SFP-10G-SR	10G SFP+ transceiver • 850-nm wavelength for multimode fiber • For distances up to 300 meters
	SFP-10G-LR	10G SFP+ transceiver • 1310-nm wavelength for single-mode fiber • For distances up to 10 kilometers
	SFP-10G-LRM	10G SFP+ transceiver • 1310-nm wavelength for single-mode and multimode fiber • For distances up to 300 meters
5G/10G Copper Transceivers (These can also be used for stacking between the SF/SG500 switches at 5 Gig)		
	SFP-H10GB-CU1M	10G/5G SFP+ transceiver • Twinax cable, passive, 30 AWG cable assembly • One meter
	SFP-H10GB-CU3M	10G/5G SFP+ transceiver • Twinax cable, passive, 30 AWG cable assembly • Three meters
	SFP-H10GB-CU5M	10G/5G SFP+ transceiver • Twinax cable, passive, 30 AWG cable assembly • Five meters

Table 2. Small Business Switch Accessories for Mini-GBIC/SFP Transceivers

Product Model	Ordering Number (SKU)	Description
Gigabit Ethernet Transceivers		
	MGBBX1	1000BASE-BX-20U SFP transceiver • 1310-nm wavelength for single-mode fiber • For distances up to 40 kilometers
	MGBLH1	1000BASE-LH SFP transceiver • 1310-nm wavelength for single-mode fiber • For distances up to 40 kilometers
	MGBLX1	1000BASE-LX SFP transceiver • 1310-nm wavelength for single-mode fiber • For distances up to 10 kilometers
	MGBSX1	1000BASE-SX SFP transceiver • 850-nm wavelength for multimode fiber • For distances up to 550 meters



Cisco SG500X Switches Stacking Accessories

Product Model	Ordering Number (SKU)	Description
10G Ethernet Fiber Transceivers		
	SFP-10G-SR	10G SFP+ transceiver • 850-nm wavelength for multimode fiber • For distances up to 300 meters
	SFP-10G-LR	10G SFP+ transceiver • 1310-nm wavelength for single-mode fiber • For distances up to 10 kilometers
	SFP-10G-LRM	10G SFP+ transceiver • 1310-nm wavelength for single-mode and multimode fiber • For distances up to 300 meters
5G/10G Copper Transceivers		
	SFP-H10GB-CU1M	10G/5G SFP+ transceiver • Twinax cable, passive, 30 AWG cable assembly • One meter
	SFP-H10GB-CU3M	10G/5G SFP+ transceiver • Twinax cable, passive, 30 AWG cable assembly • Three meters
	SFP-H10GB-CU5M	10G/5G SFP+ transceiver • Twinax cable, passive, 30 AWG cable assembly • Five meters




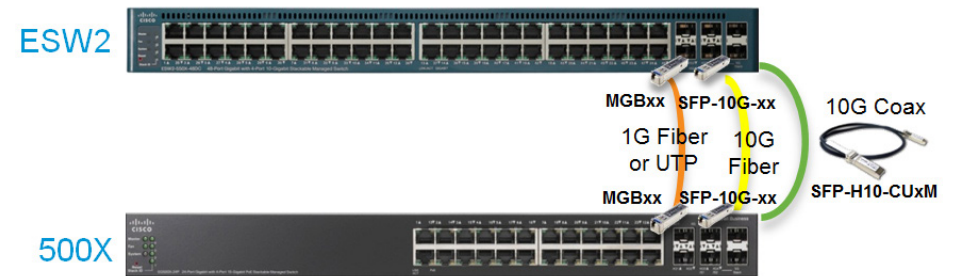
Product Model	Ordering Number (SKU)	Description
Gigabit Ethernet Transceivers		
	MGBLH1	1000BASE-LH SFP transceiver • 1310-nm wavelength for single-mode fiber • For distances up to 40 kilometers
	MGBLX1	1000BASE-LX SFP transceiver • 1310-nm wavelength for single-mode fiber • For distances up to 10 kilometers
	MGBSX1	1000BASE-SX SFP transceiver • 850-nm wavelength for multimode fiber • For distances up to 550 meters

Figure 1. Stacking options between the Cisco SG500X and ESW2-550X



How to buy

To view buying options and speak with a Cisco sales representative, visit www.cisco.com/c/en/us/buy.