

CSP 2100 ةيقرتلا ءارج

تايوتحملا

[ةمدقملا](#)

[ةيساسألا تابلطتملا](#)

[تابلطتملا](#)

[ةيفاضا تامولعم](#)

[مدختسملا نوكملا](#)

[ويرانيس](#)

[ءارجلا](#)

[ةحصللا نم ققحتلا](#)

ةمدقملا

Cisco Cloud Services Platform (CSP) 2100. ةيساسألا ماظنلا ةيقرت ءارج دننتملا اذه فصوي
Cisco نم TAC ةيسدنهم ،الكوش شانيفا ،دوس رادا لبق نم ةمهاسملا تمت

ةيساسألا تابلطتملا

تابلطتملا

cisco CSP 2100 نم ةفرعم تنأ يقلتي نأ يصوي cisco.

ةيقرتلا لبق رادصلا تاطحالم ىلا ءوجرلا ىجري.

https://www.cisco.com/c/en/us/td/docs/switches/datacenter/csp_2100/release_notes/b_Cisco_CSP_2100_ReleaseNotes_2_2_5.html

انه ةيسرلا ءدبلا ليلد ىلا ءوجرلا ىجري.

https://www.cisco.com/c/en/us/td/docs/switches/datacenter/csp_2100/quick_start/b_Cisco_CSP_2100_Quick_Start_2_2_5.html#id_14296

ةيفاضا تامولعم

- CSP-2100-X1 وه C220-M4S
- CSP-2100-X2 وه C240-M4S

مدختسملا نوكملا

ةيلالتلا ةيداملا تانوكملا ءوجم اربلا تارادصلا ىلا دننتملا اذه يف ءدراول تامولعملا دننست

- CSP 2100
- Cisco نم (CIMC) ءلمكتملا ءرادلا يف مكحتلا ءدحو - UCS C220 M4S Series مداخ
- ةيرهاظلا طئاسولا طبيطختل (KVM) حيتافملا ءحول ويديف سوام
- نم ، ISO ءروصك CSP 2100 جم انرب

<https://software.cisco.com/download/home/286286769/type/286289082/release/2.2.5>

ةصاخ ةي لمعم ةئيې ي ف ةدوجوملا ةزهجال نم دنتسملا اذه ي ف ةدراولما تامولعملما عاشنإ مت تناك اذا (يضا رتفا) حوسمم نيوكتب دنتسملا اذه ي ف ةمدختسملا ةزهجالما عيمج تأدب ي صوت .تانيوكت وا تاريغيغت يال لمحتملا ريثاتلل كمهف نم دكاتف ،ةرشابم كتكبش ةيقرتلا ةعباتم لبق نيوكتلل يطايتحإ خسن عارجاب Cisco.

ويرانيس

2.2.5 لىا 2.2.4 رادصالما نم CSP 2100 ةيقرتب موقن ،ويرانيسلا اذه ي ف

عارجالما

CSP-2100 لىا KVM مكحت ةدجواهي ف لمعت يتلا لمعلا ةطحم نيې حجراتي ال ةيقرتلا ءانثا ةكبشلا لاصتا نا نم دكاتلا يجرى :ةطخالما

ليغشت قيړط نع يلالحال تباثلال جامانربلا صحفو CIMC مكحتلا ةدجوب ةصاخلال سواملا او ويديفل اوحي فافملا ةحول مكحت ةدجو مدختسا 1. ةوطخالما "show version" رمالما

```
osp2100a# show version

Cisco Cloud Services Platform Software, 2100 Software (CSP-2100), Version 2.2.4 Build:48
TAC Support: http://www.cisco.com/tac
Copyright (c) 2016 by Cisco Systems, Inc
Compiled Thursday 21-December-2017 20:30

Linux osp2100a 3.10.0-693.5.2.el7.x86_64 #1 SMP Fri Oct 13 10:46:25 EDT 2017 x86_64 x86_64 x86_64 GNU/Linux
Red Hat Enterprise Linux Server release 7.3 (Maipo)
CSP-2100 uptime is 11 weeks, 1 day, 10 hours, 54 minutes, 3 seconds

Cisco UCSC-C220-M4S, Version C220M4.3.0.3c.0.0831170216, processor Intel(R) Xeon(R) CPU E5-2690 v3 @ 2.60GHz
48 CPUs with 29774044 kB / 65757260 kB of memory
L1d cache 32K, L1i cache 32K, L2 cache 256K, L3 cache 30720K

4 - Total Physical Interfaces (PNICs)
  1 - 1 Gbps Physical Interfaces (PNICs) Up
  2 - 10 Gbps Physical Interfaces (PNICs) Up
  1 - 1 Gbps Physical Interfaces (PNICs) Down/Unconnected

32 - Total SR-IOV virtual function (VF) interfaces enabled
  0 - Number VF Interfaces currently in service use
```

(نسختسم) "save config-file filename.af" رمالما مادختساب نيوكتلا طفاح 2. ةوطخالما

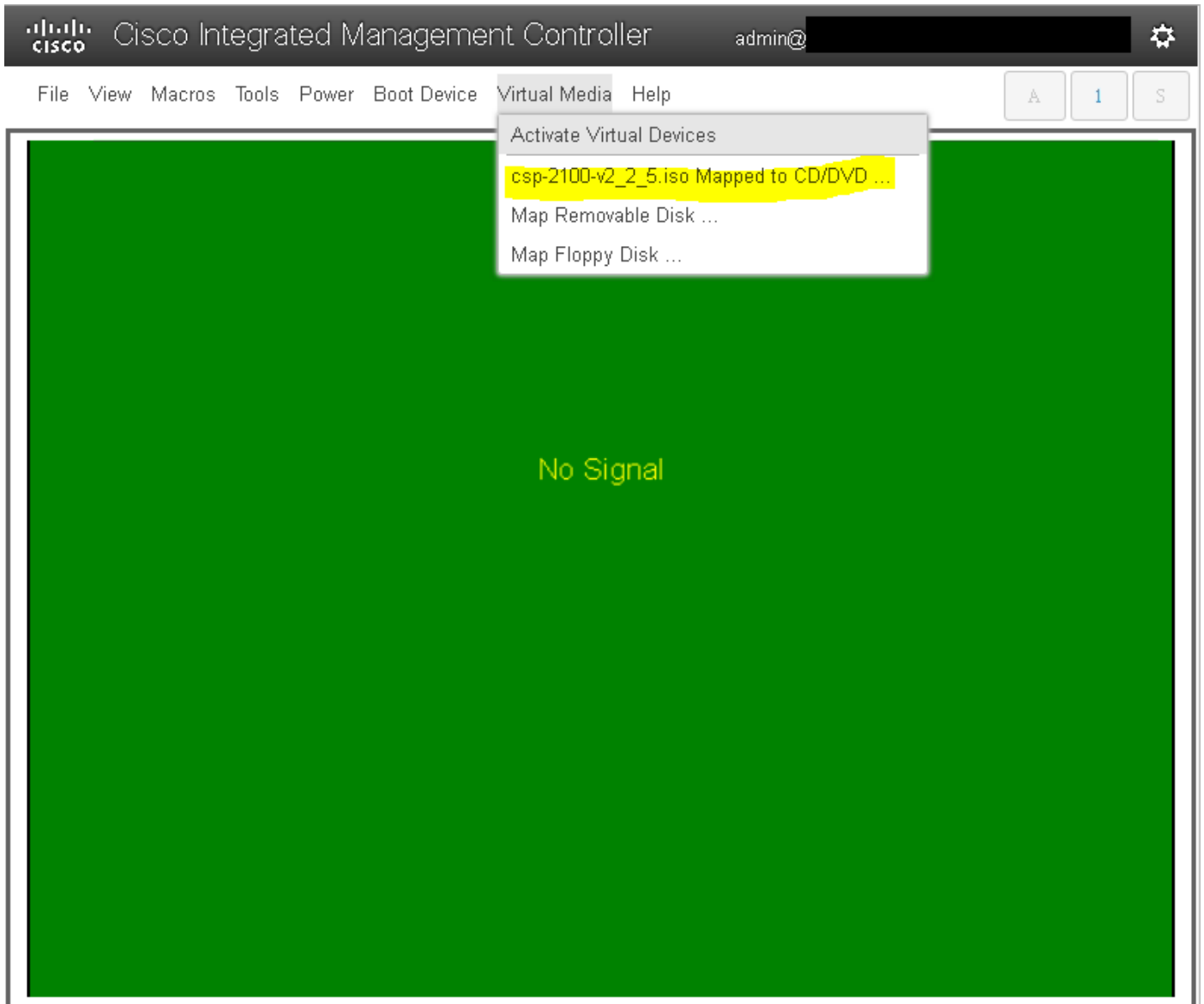
```
osp2100a# save config-file config_backup.sav
```

ةدجولما config_backup فلما عاشنإ نم ققحت 3. ةوطخالما

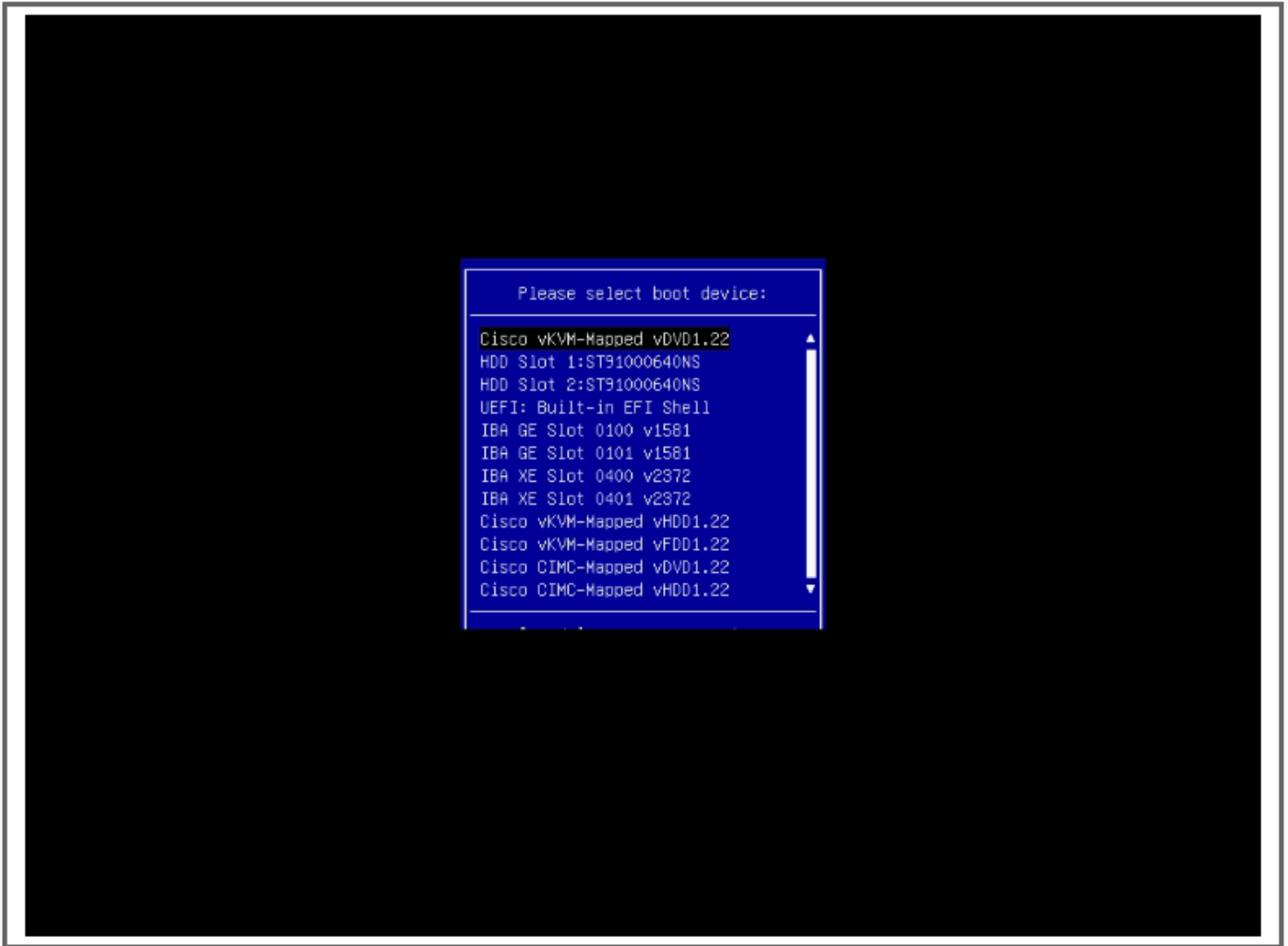
```
osp2100a# show repository
Local storage:
File Name                               Last Modified                               Size
-----
pnuc_utils.py                            Fri Feb 16 13:53:26 2018                    16660
controller-17.2.6-9019.qcow2             Fri Feb  2 04:35:45 2018                   2366544384
config_backup.sav                         Thu Apr 19 20:57:20 2018                      2778
dplugdisk2                                Tue Mar  6 14:17:27 2018                   3145728
se.qcow2                                   Sun Feb  4 01:56:59 2018                   671525376
avi_meta_controller.yml                   Fri Feb  2 16:30:48 2018                      121
avi_meta_data_se-1.yml                     Mon Feb  5 17:17:59 2018                      160
osp_show_tech.tar.gz                       Thu Feb  1 17:53:16 2018                   9904003
```

ةوطخالما 4. ةروص ليژنبت مق <https://software.cisco.com/download/home/286286769/type/286289082/release/2.2.5> نم CSP 2100 ل ISO ةروص ليژنبت مق

ةوطخالما 5. ISO ةروص نييعتب مق و سواملا او ويديفل اوحي فافملا ةحول حتفا



Cisco vKVM نم ةنعم ال vDVD1.22 صارقاً" ددحو "دهم لتلا ديدحت ةمئاق" لاخدال F6 ىلع طغضاو (ةدراپ ليغشت ةداع) مداخلا ليغشت ب مق. 6 ةوطخلا



ةيقرتلل اءارءا مءيس اءه لاءى ال ، "GSP-2100 ءبءء" ءءن اننأ نم مءرللا ىلع ، "ISO ءروس لبق نم GSP-2100 ءبءء ءبءء مءى نأ ءءمب 7. ءوطءللا

CSP-2100 2.2.5

Install CSP-2100

Test this media & install CSP-2100

Troubleshooting



Press Tab for full configuration options on menu items.

Automatic boot in 20 seconds...

ةقيرتلا لبق تيبتت لل ةيصلننلا جماربلا ليغش تب تبثملا موقيس اهلالخ لمكتكتل ةقيد 50 لىل 45 نم ذختو تيبتتلا ةيلمع أدبت 8. ةوطخل ةقيرتلا لبق تيبتتلا جماربلا رادصا لىل CSP 2100 ةقيرتلا ةقيرتلا دعب امو



Starting installer, one moment...

```
Starting installer, one moment...
anaconda 21.48.22.93-1 for Red Hat Enterprise Linux 7.3 started.
 * installation log files are stored in /tmp during the installation
 * shell is available on TTY2
 * when reporting a bug add logs from /tmp as separate text/plain attachments
23:11:31 Running pre-installation scripts
23:11:48 Not asking for UIC because of an automated install
23:11:48 Not asking for UIC because text mode was explicitly asked for in kickstart
23:11:48 Not asking for UIC because we don't have a network
Starting automated install.....
Checking software selection
Generating updated storage configuration
Checking storage configuration...
=====
Installation

 1)  Language settings           2)  Time settings
    (English (United States))         (America/New_York timezone)
 3)  Installation source       4)  Software selection
    (Local media)                     (Custom software selected)
 5)  Installation Destination   6)  Kdump
    (Custom partitioning selected)     (Kdump is enabled)
 7)  Network configuration       8)  User creation
    (Not connected)                   (No user will be created)
=====
Progress
Setting up the installation environment
.
Creating swap on /dev/sda3
.
Creating ext4 on /dev/sda5
.
Creating ext4 on /dev/sda2
.
Creating biosboot on /dev/sda1
.
Running pre-installation scripts
.
Starting package installation process
-
anaconda1 1:main* 2:shell 3:log 4:storage-log 5:program-log Switch tab: Alt+Tab | Help: F1
```




```
[ OK ] Stopped target Local File Systems.
       Unmounting /mnt/sysimage/sys/fs/selinux...
       Unmounting /mnt/sysimage/run...
       Unmounting /mnt/sysimage/dev/pts...
       Unmounting /mnt/sysimage/proc...
       Unmounting /mnt/sysimage/osp...
       Unmounting /mnt/sysimage/dev/shm...
       Unmounting /mnt/sysimage/upgrade...
       Unmounting Temporary Directory...
       Unmounting /run/install/repo...
[ OK ] Stopped Configure read-only root support.
       Stopping Configure read-only root support...
[ OK ] Stopped Rebuild Hardware Database.
       Stopping Rebuild Hardware Database...
       Unmounting Configuration File System...
[ OK ] Stopped Setup Virtual Console.
       Stopping Setup Virtual Console...
       Stopping Load/Save Random Seed...
[ OK ] Unmounted /mnt/sysimage/sys/fs/selinux.
[ OK ] Unmounted /mnt/sysimage/run.
[ OK ] Unmounted /mnt/sysimage/dev/pts.
[ OK ] Unmounted /mnt/sysimage/proc.
[ OK ] Unmounted /mnt/sysimage/dev/shm.
[ OK ] Unmounted Temporary Directory.
[ OK ] Failed unmounting /run/install/repo.
[ OK ] Unmounted Configuration File System.
[ OK ] Stopped Load/Save Random Seed.
       Unmounting /mnt/sysimage/dev...
       Unmounting /mnt/sysimage/sys...
[ OK ] Unmounted /mnt/sysimage/osp.
[ OK ] Unmounted /mnt/sysimage/dev.
[ OK ] Unmounted /mnt/sysimage/sys.
[ OK ] Unmounted /mnt/sysimage/upgrade.
       Unmounting /mnt/sysimage...
[ OK ] Unmounted /mnt/sysimage.
[ OK ] Reached target Unmount All Filesystems.
[ OK ] Stopped target Local File Systems (Pre).
       Stopping Monitoring of LVM2 mirrors, snapshots etc. using dmeventd or progress polling...
[ OK ] Stopped Create Static Device Nodes in /dev.
       Stopping Create Static Device Nodes in /dev...
[ OK ] Stopped Remount Root and Kernel File Systems.
       Stopping Remount Root and Kernel File Systems...
[ OK ] Stopped Collect Read-Ahead Data.
       Stopping Collect Read-Ahead Data...
[ OK ] Stopped Monitoring of LVM2 mirrors, snapshots etc. using dmeventd or progress polling.
       Stopping LVM2 metadata daemon...
[ OK ] Stopped LVM2 metadata daemon.
[ *** ] A start job is running for Restore /run/initramfs (1min 39s / no limit)
```




```
Red Hat Enterprise Linux Server 7.3 (Maipo)
Kernel 3.10.0-693.11.6.el7.x86_64 on an x86_64

csp2100a login: admin
Password:
Welcome to the Cisco Cloud Services Platform CLI

TAC support: http://www.cisco.com/tac
Copyright (c) 2015-2017, Cisco Systems, Inc. All rights reserved.
The copyrights to certain works contained in this software are
owned by other third parties and used and distributed under
license. Certain components of this software are licensed under
the GNU General Public License (GPL) version 2.0 or the GNU
Lesser General Public License (LGPL) Version 2.1. A copy of each
such license is available at
http://www.opensource.org/licenses/gpl-2.0.php and
http://www.opensource.org/licenses/lgpl-2.1.php

admin connected from 127.0.0.1 using console on csp2100a
csp2100a# show version

Cisco Cloud Services Platform Software, Z100 Software (CSP-Z100), Version 2.2.5 Build:72
TAC Support: http://www.cisco.com/tac
Copyright (c) 2016 by Cisco Systems, Inc
Compiled Friday 30-March-2018 00:18

Linux csp2100a 3.10.0-693.11.6.el7.x86_64 #1 SMP Thu Dec 28 14:23:39 EST 2017 x86_64 x86_64 x86_64 GNU/Linux
Red Hat Enterprise Linux Server release 7.3 (Maipo)
CSP-Z100 uptime is 3 minutes, 58 seconds

Cisco UCSC-C220-M4S, Version C220M4.3.0.3c.0.0031170216, processor Intel(R) Xeon(R) CPU E5-2690 v3 @ 2.60GHz
48 CPUs with 58842916 kB / 65756840 kB of memory
L1d cache 32K, L1i cache 32K, L2 cache 256K, L3 cache 30720K

4 - Total Physical Interfaces (PNICs)
  1 - 1 Gbps Physical Interfaces (PNICs) Up
  2 - 10 Gbps Physical Interfaces (PNICs) Up
  1 - 1 Gbps Physical Interfaces (PNICs) Down/Unconnected

32 - Total SR-IOV virtual function (VF) interfaces enabled
  0 - Number VF Interfaces currently in service use

csp2100a#
```

***** !! 2. 2. 5 !! رادصلإا مادختساب CSP 2100 ديهمت متي !!ةقرتلإا تلتمتاك *****

ةمچرتل هذه ل و ح

ةلأل تاي نقتل ن م ة و مچ م ادخت ساب دن تسمل اذ ه Cisco ت مچرت
ملاعلاء ن أ عي مچ ي ف ن ي م دخت سمل ل معد ي و تح م مي دقت ل ة ي رش ب ل و
امك ة ق ي قد ن و ك ت ن ل ة ي ل أ ة مچرت ل ض ف أ ن أ ة ظ حال م ي ج ر ي . ة ص ا خ ل م ه ت غ ل ب
Cisco ي ل خ ت . ف ر ت ح م مچرت م ا ه م د ق ي ي ت ل ا ة ي ف ا ر ت ح ا ل ا ة مچرت ل ا ع م ل ا ح ل ا و ه
ي ل ا م ا د ع و ج ر ل ا ب ي ص و ت و ت ا مچرت ل ا ه ذ ه ة ق د ن ع ا ه ت ي ل و ئ س م Cisco
Systems (رف و ت م ط بار ل ا) ي ل ص أ ل ا ي ز ي ل ج ن ا ل ا دن تسمل ا