

Ø^aÙfÙ^ÙŠÙ† RADIUS Ø¹Ù,,Ù% Ø§Ù,,Ù...ØÙ^Ù,,Ø§Ø^a Ø§Ù,,Ù...Ø⁻Ø§Ø±Ø© 200/300 Series

Ø§Ù,,Ù‡Ø⁻Ù

Ø®Ø⁻Ù...Ø© Ù...Ø§Ø⁻Ù,,Ø© Ø·Ù,,Ø[·] Ø§Ø^aØ§Ù,, Ø§Ù,,Ù...Ø³Ø^aØ®Ø⁻Ù... Ø§Ù,,Ø[·]Ø¹ÙŠØ⁻
(RADIUS) Ù‡ÙŠ Ø®Ø⁻Ù...Ø© Ø£Ù...Ø§Ù† Ø^aØ³Ø^aØ®Ø⁻Ù... Ù,,Ù...Ø§Ø⁻Ù,,Ø©
Ø§Ù,,Ù...Ø³Ø^aØ®Ø⁻Ù...ÙŠÙ† Ù[◆]ÙŠ Ø§Ù,,Ø[·]Ø[·] ÙfØ§Ø^a Ø°Ø§Ø^a Ø[·]Ù†ÙŠØ© Ø§Ù,,Ø£Ù...Ø§Ù†
Ø§Ù,,Ù...Ø±ÙfØ²ÙŠØ©. ÙŠÙ...ÙfÙ† Ù,,Ù,,Ù...ØÙ^Ù,,Ø§Ø^a Ø§Ù,,Ù...Ø⁻Ø§Ø±Ø© Ù[◆]Ø|Ø©
200/300 Ø§Ù,,Ø¹Ù...Ù,, ÙfØ¹Ù...ÙŠÙ,, RADIUS Ù[◆]ÙŠ Ø[·]Ø[·] ÙfØ^aÙfØ© Ù[^]Ø[·]Ø§Ù,,Ø^aØ¹Ø§Ù^Ù†
Ù...Ø¹ Ø®Ø§Ø⁻Ù... RADIUSØ© ÙŠÙ...ÙfÙ†Ùf Ø¥Ù†Ø[·]Ø§Ø; Ù†Ø,Ø§Ù... Ù...Ø±ÙfØ²ÙŠ[·]
Ù,,Ù...ØµØ§Ø⁻Ù,,Ø© Ø§Ù,,Ù...Ø³Ø^aØ®Ø⁻Ù...ÙŠÙ† Ù[◆]ÙŠ Ø[·]Ø[·] ÙfØ^aÙf. ÙŠØ[·]Ø±Ø Ù†Ø°Ø§
Ø§Ù,,Ù...Ù,,Ø§Ù,, ÙfÙŠÙ[◆]ÙŠØ© Ø^aÙfÙ^ÙŠÙ† Ø®Ø§Ø⁻Ù... RADIUS Ù[^]Ø^aØ[·]Ø[·] ÙŠÙ,, Ø·Ø±Ù,
Ø§Ù,,Ù...ØµØ§Ø⁻Ù,,Ø© Ø¹Ù,,Ù% Ø§Ù,,Ù...ØÙ^Ù,,Ø§Ø^a Ø§Ù,,Ù...Ø⁻Ø§Ø±Ø© Ù...Ù†
Ø§Ù,,Ø³Ù,,Ø³Ù,,Ø© 200/300.

Ø§Ù,,Ø£Ø⁻Ù‡Ø²Ø© Ø§Ù,,Ù,,Ø§Ø⁻Ù,,Ø© Ù,,Ù,,Ø^aØ[·]Ø[·]ÙŠÙ,, | Ø¥Ø[·]Ø⁻Ø§Ø±
Ø§Ù,,Ø[·]Ø±Ø§Ù...Ø⁻

SF/SG 200 Series - 1.2.9.x •
SF/SG 300 Series - 1.2.9.x •

Ø§Ù,,Ø^aÙfÙ^ÙŠÙ† Ø§Ù,,Ø§Ù[◆]Ø^aØ±Ø§Ø¶ÙŠ RADIUS

ÙŠØ±Ø[·]Ø⁻Ùf Ù‡Ø°Ø§ Ø§Ù,,Ù,,Ø³Ù... Ø®Ù,,Ø§Ù,, Ø§Ù,,Ø^aÙfÙ^ÙŠÙ† Ø§Ù,,Ø§Ù[◆]Ø^aØ±Ø§Ø¶ÙŠ[·]
Ù,,Ø®Ø§Ø⁻Ù... RADIUS. ÙŠÙ...ÙfÙ† Ø¥Ø³Ø^aØ®Ø⁻Ø§Ù... Ù†Ø°Ù† Ø§Ù,,Ù,ÙŠÙ...
Ø§Ù,,Ø§Ù[◆]Ø^aØ±Ø§Ø¶ÙŠØ© Ù,,Ø£ÙŠ Ø®Ø§Ø⁻Ù... RADIUS Ø^aØ±ÙŠØ⁻ Ø¥Ø¶ÙŠ[◆]Ø^aÙ†
Ø¥Ù,,Ù% Ù...ØÙ^Ù,, Ù...Ø§.

Ø§Ù,,Ø®Ø[·]Ù[^]Ø© 1

Ù,Ù... Ø[·]Ø³Ø⁻ÙŠÙ,, Ø§Ù,,Ø⁻Ø®Ù^Ù,, Ø¥Ù,,Ù% Ø£Ø⁻Ø§Ø© Ø^aÙfÙ^ÙŠÙ† Ø§Ù,,Ù^ÙŠØ[·]
Ù[^]Ø§Ø®Ø^aØ± Ø§Ù,,Ø^aØ£Ù...ÙŠÙ† > RADIUS. ÙŠØ^aÙ... Ù[◆]Ø^aØ ØµÙ[◆]ØØ© RADIUS:

RADIUS

RADIUS Accounting: Port Based Access Control (802.1X, MAC Based)
 Management Access
 Both Port Based Access Control and Management Access
 None

Use Default Parameters

IP Version: Version 6 Version 4

Retries: (Range: 1 - 10, Default: 3)

Timeout for Reply: sec. (Range: 1 - 30, Default: 3)

Dead Time: min. (Range: 0 - 2000, Default: 0)

Key String: Encrypted
 Plaintext (0/128 Characters Used)

<input type="checkbox"/>	Server	Priority	Key String(Encrypted)	Timeout for Reply	Authentication Port	Accounting Port	Retries	Dead Time	Usage Type
0 results found.									

Ø§Ù,,Øµ^Ø± Ø§Ù,,Ù...Ù^Ø-Ù^Ø^Ø© Ù^ØŠ Ù^Ø±Ù^Ø± Ø§Ù,,Ù...Ù,Ø§Ù,,Ø© Ù^ØŠ Ù^Ø±Ù^Ø± Ù^Ø±Ù^Ø± Ù^Ø±Ù^Ø±, Ø·Ø±Ø§Ø² SG300.

Ø§Ù,,Ø®Ø·Ù^Ø© 2

Ù^ØŠ ØÙ,Ù,, Ù...Ø§Ø³Ø´^Ø© RADIUSØœ Ø§Ù^Ù,Ø± Ù^Ø±Ù^Ø±, Ø£ÙŠ Ù^Ø±Ù^Ø±...Ø§ Ù^Ø±Ù^Ø±:

- Ø§Ù,,ØªØÙ^Ù... Ù^ØŠ Ø§Ù,,Ù^ØµÙ^Ù,, Ø§Ù,,Ù...Ø³ØªÙ^Ø^ Ø¥Ù,,Ù% Ø§Ù,,Ù...Ù^Ù^Ø° • (802.1xØœ Ù,Ø§Ø|Ù... Ø¹Ù,,Ù% MAC) - Ù,,Ø§Ø³ØªØ®Ø^Ø§Ù... Ø®Ø§Ø^Ù... RADIUS Ù,,Ù...Ø§Ø³Ø´^Ø© Ù^Ø±Ù^Ø±Ù^Ø±Ø° 802.1x.
- Ø§Ù,,Ù^Øµ^Ù,, Ø¥Ù,,Ù% Ø§Ù,,Ø¥Ø-Ø§Ø±Ø© - Ù,,Ø§Ø³ØªØ®Ø^Ø§Ù... Ø®Ø§Ø^Ù... RADIUS Ù,,Ù...Ø§Ø³Ø´^Ø© Øª³Ø-ÙŠÙ,, Ø§Ù,,Ø-Ø®Ù^Ù,, Ù^Ù,,Ø§ Ù^Ø±Ù^Ø± Ø§Ù,,ØªØÙ^Ù... Ù^ØŠ Ø§Ù,,Ù^ØµÙ^Ù,, Ø§Ù,,Ù...Ø³ØªÙ^Ø^ Ø¥Ù,,Ù% Ø§Ù,,Ù...Ù^Ù^Ø° Ù^Ø±Ù^Ø± Ù^Ø±Ù^Ø±, Ø§Ù,,Ø¥Ø-Ø§Ø±ÙŠ - Ù,,Ø§Ø³ØªØ®Ø^Ø§Ù... Ø®Ø§Ø^Ù... RADIUS Ù,,Ù^Ù,, Ù...Ù^Ù^Ø§Ø³Ø´^Ø© Øª³Ø-ÙŠÙ,, Ø§Ù,,Ø-Ø®Ù^Ù,, none - Ù,,Ø¹Ø^Ù... Ø¥Ø³ØªØ®Ø^Ø§Ù... Ø®Ø§Ø^Ù... RADIUS Ù,,Ø£Ø°Ø±Ø§Ø¶ Ø§Ù,,Ù...Ø§Ø³Ø´^Ø©.

Ù,,Ø§ ØªØªÙ^Ù^Ø± Ø¹Ù...Ù,,ÙŠØ© Ù^Ø±Ù^Ø±Ø´^Ø© RADIUS Ø¹Ù,,Ù% Ø§Ù,,Ù...Ø±Ù^Ù,,Ø§Øª Ù^Ø±Ù^Ø±,Ø³Ù,,Ø³Ù,,Ø© SG200.

Ø§Ù,,Ø®Ø·Ù^Ø© 3

Ù❖ÙŠ ù,ø³ù... ø¥ø³øªø®ø¯øšù... øšù,,ù...ø¹ù,,ù...øšøª øšù,,øšù❖øªø±øšø¶ùšø©øœ
Ù❖ÙŠ øù,ù,, ø¥ø¹øšø¯ø© øšù,,ù...øøšù^ù,,ø©øœ øœø¯ø®ù,, ø¹ø¯ø¯ ù...ø±øšøª
ø¥ø¹øšø¯ø© ù...øøšù^ù,,ø© øšù,,ù...øù^ù,, øšù,,ø°ùš øªù... ø¥ø-ø±øšøª±ùš
ù,,ù...øµøšø¯ù,ø© ø®øšø¯ù... RADIUS.

øšù,,ø®ø·ù^ø© 4

Ù❖ÙŠ øù,ù,, "ù...ù±ù,,ø© øšù,,ø±ø¯"øœ øœø¯ø®ù,, øšù,,ù^ù,øª ø¯ øšù,,ø«ù^øšù†ùš
ù,,ùfù,, ù...øøšù^ù,,ø© ù...øµøšø¯ù,ø© ùšøªù... ø¥ø-ø±øšøª±ùšøš ø¹ù,,ù%
ø®øšø¯ù... RADIUS.

øšù,,ø®ø·ù^ø© 5

Ù❖ÙŠ øù,ù,, øšù,,ù^ù,øª øšù,,ù...ùšøªøœ øœø¯ø®ù,, øšù,,ù^ù,øª ø¯ øšù,,ø¯ù,øšø¶ù,
ù,ø¯ù,, øœù† ùšø¹ù,,ù† øšù,,ù...øù^ù,, ø¹ù† ù^ù❖øšø© ø®øšø¯ù... RADIUS ø°ùšø±
øšù,,ù...ø³øªø-ùšø¯ ù^ùšøªø±ùf ø¥ù,,ù% øšù,,ø®øšø¯ù... øšù,,øªøšù,,ùš
øšù,,ù...øªøšø ù,,ù...øøšù^ù,,ø© øšù,,øšøªøµøšù,,.

øšù,,ø®ø·ù^ø© 6

Ù❖ÙŠ øù,ù,, "ø³ù,,ø³ù,,ø© øšù,,ù...ù❖øšøªùšø"øœ øœø¯ø®ù,, øšù,,ù...ù❖øªøšø
øšù,,ù...ø³øªø®ø¯ù... ù,,ù,,ù...øµøšø¯ù,ø© ù^øšù,,øªøù^ù❖ùšø± ø¯ ùšù† øšù,,ù...øù^ù,,
ù^ø®øšø¯ù... RADIUS. ùšø-ø¯ øœù† ùšøªø·øšø¯ù, ù±ø°øš øšù,,ù...ù❖øªøšø ù...ø¹
ùfù,, ù...ù† ø®øšø¯ù... RADIUS ù^øšù,,ù...øù^ù,,. ø·ù,ø·ù,øª ù^øšø¯ ù...ù†
øšù,,øªøšù,,ùš:

- Ùšøù❖ø± - ø¥ø°øš ùføšù† ù,,ø¯ùšùf ù...ù❖øªøšø ù...øù^ù❖ø± ù...ù† ø-ù±øšø² ·
øçø®ø±øœ ù❖øœø¯ø®ù,, øšù,,ù...ù❖øªøšø.
- ù†øµ¹øšø¯ùš - ø¥ø°øš ù,,ù... ùšùfù† ù,,ø¯ùšùf ù...ù❖øªøšø ù...øù^ù❖ø± ù...ù†
ø-ù±øšø² øçø®ø±øœ ù❖øœø¯ø®ù,, øšù,,ù...ù❖øªøšø ùfù†øµ ø¹øšø¯ùš.

øšù,,ø®ø·ù^ø© 7

øšù†ù,ø± ù❖ù^ù, øªø·ø¯ùšù, ù,,øù❖ø, ù±ø°ù± øšù,,ù,ùšù...
øšù,,øšù❖øªø±øšø¶ùšø© ù^øªù^ù❖ùšø±ù±øš ù,,ø®øšø¯ù... RADIUS.

ø¥ø¶øšù❖ø©/øªøø±ùšø± ø®øšø¯ù... RADIUS

Ù❖ÙŠ ù±ø°øš øšù,,ù,ø³ù...øœ ùšøªù... øªù^ù❖ùšø± ø¥ø-ø±øšø¶; ù...ù❖øµù,,
ø®ø·ù^ø© ø¯ ø®ø·ù^ø© ùšù^ø¶ø ùfùšù❖ùšø© ø¥ø¶øšù❖ø© ø®øšø¯ù... RADIUS
øœù^ øªøø±ùšø±ù± ø¥ù,,ù% ù...øù^ù,,øšøª ù...ø¯øšø±ø© ù...ù† øšù,,ø³ù,,ø³ù,,ø©
200/300.

øšù,,ø®ø·ù^ø© 1

ù,ù... ø¯øªø³ø-ùšù,, øšù,,ø-ø®ù^ù,, ø¥ù,,ù% øœø¯øšø© øªùfù^ùšù† øšù,,ù^ùšø¯
ù^øšø®øªø± øšù,,øªøœù...ùšù† > RADIUS. ùšøªù... ù❖øªø øµù❖øø© RADIUS:

RADIUS Table										
<input type="checkbox"/>	Server	Priority	Key String(Encrypted)	Timeout for Reply	Authentication Port	Accounting Port	Retries	Dead Time	Usage Type	
0 results found.										
<input type="button" value="Add..."/> <input type="button" value="Edit..."/> <input type="button" value="Delete"/>										
<input type="button" value="Display Sensitive Data As Plaintext"/>										

Ø§Ù,,Ø®Ø·Ù`Ø© 2

Ù`ÙŠ Ù,Ø³Ù... Ø-Ø`Ù^Ù,, RADIUSØœ Ø§Ù†Ù,Ø± Ù`Ù^Ù, Ø¥Ø¶Ø§Ù`Ø©. ØªØ,Ù‡Ø± Ù†Ø§Ù`Ø°Ø© Ø¥Ø¶Ø§Ù`Ø© Ø®Ø§Ø`Ù... Radius.

Ù,,ØªØ±ÙŠØ± Ø®Ø§Ø`Ù... Radius Ø§Ù,,Ø§Ù,,ÙŠØœ Ø§Ù†Ù,Ø± Ù`Ù^Ù, ØªØ±ÙŠØ± Ù`ØªØ±ÙŠØ± Ø§Ù,,Ø®Ø§Ø¶Ø¶Ø§Ù,,Ù...Ø·Ù,,Ù`Ø·Ø© Ù,,Ø®Ø§Ø`Ù... RADIUS.

Server Definition:	<input checked="" type="radio"/> By IP address <input type="radio"/> By name
IP Version:	<input type="radio"/> Version 6 <input checked="" type="radio"/> Version 4
IPv6 Address Type:	<input type="radio"/> Link Local <input type="radio"/> Global
Link Local Interface:	None
Server IP Address/Name:	192.168.1.20
Priority:	1 (Range: 0 - 65535)
Key String:	<input checked="" type="radio"/> Use Default <input type="radio"/> User Defined (Encrypted) <input type="text"/> <input type="radio"/> User Defined (Plaintext) <input type="text"/> (0/128 Characters Used)
Timeout for Reply:	<input checked="" type="radio"/> Use Default <input type="radio"/> User Defined Default sec. (Range: 1 - 30, Default: 10)
Authentication Port:	1812 (Range: 0 - 65535, Default: 1812)
Accounting Port:	1813 (Range: 0 - 65535, Default: 1813)
Retries:	<input checked="" type="radio"/> Use Default <input type="radio"/> User Defined Default (Range: 1 - 10, Default: 5)
Dead Time:	<input checked="" type="radio"/> Use Default <input type="radio"/> User Defined Default min. (Range: 0 - 2000, Default: 5)
Usage Type:	<input checked="" type="radio"/> Login <input type="radio"/> 802.1x <input type="radio"/> All
<input type="button" value="Apply"/> <input type="button" value="Close"/>	

Ø§Ù,,Ø®Ø·Ù`Ø© 3

Ù`ÙŠ ØÙ,Ù,, ØªØ¹Ø±ÙŠÙ` Ø§Ù,,Ø®Ø§Ø`Ù...Øœ Ø§Ù†Ù,Ø± Ù`Ù^Ù, Ø£ÙŠ Ù...Ù...Ø§ ÙŠÙ,,ÙŠ:

- Ø·Ø§Ù,,Ø§Ø³Ù... - Ø¥Ø°Ø§ ØªÙ... ØªØ¹Ø±ÙŠÙ` Ø®Ø§Ø`Ù... RADIUS Ø·Ø§Ø³Ù....
- Ø·Ù`Ø§Ø³Ø·Ø© Ø·Ù†Ù`Ø§Ù† IP - Ø¥Ø°Ø§ ØªÙ... ØªØ¹Ø±ÙŠÙ` Ø®Ø§Ø`Ù... RADIUS

Ø¹Ù†Ù^Ø§Ù† IP.

Ø§Ù,,Ø®Ø·Ù^Ø© 4

Ù◆ÙŠ ØÙ,Ù,, Ø¥ØµØ¯Ø§Ø± IPØCE Ø§Ù†Ù,Ø± Ù◆Ù^Ù, Ø§Ù,,Ø¥ØµØ¯Ø§Ø± 6 Ø£Ù^ Ø§Ù,,Ø¥ØµØ¯Ø§Ø± 4 ÙfÙ†Ù^Ø¹ Ø¹Ù†Ù^Ø§Ù† IP Ø§Ù,,Ø®Ø§ØµØ¯Ø®Ø§ØÙ... RADIUS.

Ø§Ù,,Ø®Ø·Ù^Ø© 5

Ø¥Ø°Ø§ ØªÙ... Ø¥Ø®ØªÙŠØ§Ø± Ø§Ù,,Ø¥ØµØ¯Ø§Ø± 6 ÙfØ¹Ù†Ù^Ø§Ù† IP Ù◆ÙŠ Ù†Ù^Ø¹ Ø¹Ù†Ù^Ø§Ù† IPv6ØCE Ù◆Ø§Ù†Ù,Ø± Ù◆Ù^Ù, Ø£ØØ¯ Ù...Ø§ ÙŠÙ,,ÙŠ:

- Ø§Ù,,Ø§Ø±ØªØ¯Ø§Ø· Ø§Ù,,Ù...ØÙ,,ÙŠ - Ø¹Ù†Ù^Ø§Ù† IPv6 Ø§Ù,,Ø°ÙŠ ÙŠØØØ· • Ø§Ù,,Ø£Ø-Ù‡Ø²Ø© Ø§Ù,,Ù...Ø¶ÙŠÙ◆Ø© Ù◆Ù,Ø· Ø¹Ù,,Ù% Ø¥Ø±ØªØ¯Ø§Ø· Ø´Ø·ÙfØ© Ù^Ø§ØØ¯.
- Ø¹Ù...Ù^Ù...ÙŠ - Ø¹Ù†Ù^Ø§Ù† IPv6 ÙŠÙ...ÙfÙ† Ø§Ù,,Ù^Øµ^Ù,, Ø¥Ù,,ÙŠÙ‡ Ù...Ù† Ø´Ø·ÙfØ§Øª Ø£Ø®Ø±Ù%.

Ø§Ù,,Ø®Ø·Ù^Ø© 6

Ø¥Ø°Ø§ ØªÙ... Ø¥Ø®ØªÙŠØ§Ø± Link Local ÙfÙ†Ù^Ø¹ Ø¹Ù†Ù^Ø§Ù† IPv6ØCE Ù◆ÙŠ Ø§Ù,,Ù,Ø§Ø!Ù...Ø© Ø§Ù,,Ù...Ù†Ø³Ø¯Ù,,Ø© Link Local InterfaceØCE Ø£Ø®ØªØ± Ø§Ù,,Ù^Ø§Ø-Ù‡Ø© Ø§Ù,,Ù...Ù†Ø§Ø³Ø¯Ø©.

Ø§Ù,,Ø®Ø·Ù^Ø© 7

Ø¯Ø®Ù,,Øª Ù◆ÙŠ Ø§Ù,,Ø®Ø§Ø¯Ù... Ø¹Ù†Ù^Ø§Ù†/Ø§Ø³Ù... Ù...Ø-Ø§Ù,,ØCE Ø§Ù,,Ø¹Ù†Ù^Ø§Ù† Ø£Ù^ Ø§Ù,,Ø§Ø³Ù... Ù...Ù† Ø§Ù,, RADIUS Ù†Ø§Ø¯Ù,,

Ø§Ù,,Ø®Ø·Ù^Ø© 8

Ù◆ÙŠ ØÙ,Ù,, Ø§Ù,,Ø£Ù^Ù,,Ù^ÙŠØ©ØCE Ø£Ø¯Ø®Ù,, Ø£Ù^Ù,,Ù^ÙŠØ© Ø®Ø§Ø¯Ù... RADIUS Ø§Ù,,Ø°ÙŠ Ø³ÙŠØ³ØªØ®Ø¯Ù...Ù‡ Ø§Ù,,Ù...ØÙ^Ù,, ÙŠØªÙ... Ø§Ù,,Ø§Ø³ØªØ¹Ù,,Ø§Ù... Ø¹Ù† Ø§Ù,,Ø®Ø§Ø¯Ù... ØµØ§ØØ· Ø§Ù,,Ø£Ù^Ù,,Ù^ÙŠØ© Ø§Ù,,Ø¹Ù,,ÙŠØ§ Ø£Ù^Ù,,Ø§ Ù◆ÙŠ Ø§Ù,,Ù...ØÙ^Ù,, ØµÙ◆Ø± (0) ÙŠØ¹Ø·ÙŠ Ø£Ø¹Ù,,Ù% Ø£Ù^Ù,,Ù^ÙŠØ©.

Ø§Ù,,Ø®Ø·Ù^Ø© 9

Ù◆ÙŠ ØÙ,Ù,, "Ø³Ù,,Ø³Ù,,Ø© Ø§Ù,,Ù...Ù◆Ø§ØªÙŠØ"ØCE Ø§Ù†Ù,Ø± Ù◆Ù^Ù, Ø£ÙŠ Ù...Ù...Ø§ ÙŠÙ,,ÙŠ:

- Ø£Ø³ØªØ®Ø¯Ù... Ø§Ù,,Ø§Ù◆ØªØ±Ø§Ø¶ÙŠ - Ù,,Ø§Ø³ØªØ®Ø¯Ø§Ù... Ø§Ù,,Ù...Ù◆ØªØ§Ø · Ø§Ù,,Ø§Ù◆ØªØ±Ø§Ø¶ÙŠ Ù,,Ù,,Ù...ØµØ§Ø¯Ù,Ø©.
- Ù...Ø¹Ø±Ù◆ Ù...Ù† Ù,Ø·Ù,, Ø§Ù,,Ù...Ø³ØªØ®Ø¯Ù... (Ù...Ø¹Ù◆Ø±) - Ø¥Ø°Ø§ ÙfØ§Ù† Ù...ØªÙ^Ù◆Ø±Ø§ØCE Ù◆Ø£Ø¯Ø®Ù,, Ø§Ù,,Ù...Ù◆ØªØ§Ø Ø§Ù,,Ù...Ø¹Ù◆Ø±.
- Ù...Ø¹Ø±Ù◆ Ù...Ù† Ù,Ø·Ù,, Ø§Ù,,Ù...Ø³ØªØ®Ø¯Ù... (Ù†Øµ Ø¹Ø§Ø¯ÙŠ) - Ø¥Ø°Ø§ Ù,,Ù... ÙŠÙfÙ† Ù...ØªÙ^Ù◆Ø±Ø§ØCE Ù◆Ø£Ø¯Ø®Ù,, Ø§Ù,,Ù...Ù◆ØªØ§Ø ÙfÙ†Øµ Ø¹Ø§Ø¯ÙŠ.

Ø§Ù,,Ø®Ø·Ù^Ø© 10

Ù◆ÙŠ ØÙ,Ù,, Ù...Ù‡Ù,,Ø© Ø§Ù,,Ø±Ø¯ Øœ Ø§Ù†Ù,,Ø± Ù◆Ù^Ù,, ØœØ¯ Ø§Ù,,ØœÙ...Ù^Ø± Ø§Ù,,ØªØ§Ù,,ÙŠØ©:

- ØœØ³ØªØ®Ø-Ù... Ø§Ù,,Ø§Ù◆ØªØ±Ø§Ø¶ÙŠ - Ù,,Ø§Ø³ØªØ®Ø-Ø§Ù... Ø§Ù,,Ù,ÙŠÙ...Ø© •
Ø§Ù,,Ø§Ù◆ØªØ±Ø§Ø¶ÙŠØ©.
- Ù...Ø¹Ø±Ù◆ Ù...Ù† Ù,Ø¯Ù,, Ø§Ù,,Ù...Ø³ØªØ®Ø-Ù... - ØœØ¯Ø®Ù,, Ø§Ù,,Ø±Ù,Ù... •
Ø¯ Ø§Ù,,Ø«Ù^Ø§Ù†ÙŠ Ø§Ù,,ØªÙŠ ÙŠÙ†ØªØ,Ø±Ù‡Ø§ Ø§Ù,,Ù...ØÙ^Ù,, Ù,,ÙƒÙ,,
Ù...ØØ§Ù^Ù,,Ø© Ù,,Ù,,Ø§ØªØµØ§Ù,, Ø¯ Ø®Ø§Ø-Ù... RADIUS.

Ø§Ù,,Ø®Ø·Ù^Ø© 11

Ù◆ÙŠ ØÙ,Ù,, Ù...Ù†Ù◆Ø° Ø§Ù,,Ù...ØµØ§Ø-Ù,Ø©Øœ ØœØ¯Ø®Ù,, Ù...Ù†Ù◆Ø° UDP Ø§Ù,,ØªÙŠ ÙŠØ³ØªØ®Ø-Ù...Ù‡ Ø®Ø§Ø-Ù... RADIUS Ù,,Ù,,Ù...ØµØ§Ø-Ù,Ø©.

Ø§Ù,,Ø®Ø·Ù^Ø© 12

Ù◆ÙŠ ØÙ,Ù,, Ù...Ù†Ù◆Ø° Ø§Ù,,Ù...ØØ§Ø³Ø¯ Ø©Øœ ØœØ¯Ø®Ù,, Ù...Ù†Ù◆Ø° UDP Ø§Ù,,ØªÙŠ ÙŠØ³ØªØ®Ø-Ù...Ù‡ Ø®Ø§Ø-Ù... RADIUS Ù,,Ù,,Ù...ØØ§Ø³Ø¯ Ø©.

Ø§Ù,,Ø®Ø·Ù^Ø© 13

Ù◆ÙŠ ØÙ,Ù,, Ø¥Ø¹Ø§Ø-Ø© Ø§Ù,,Ù...ØØ§Ù^Ù,,Ø©Øœ Ø§Ù†Ù,,Ø± ØœÙŠ Ù...Ù...Ø§ ÙŠÙ,,ÙŠ:

- ØœØ³ØªØ®Ø-Ù... Ø§Ù,,Ø§Ù◆ØªØ±Ø§Ø¶ÙŠ - Ù,,Ø§Ø³ØªØ®Ø-Ø§Ù... Ø§Ù,,Ù,ÙŠÙ...Ø© •
Ø§Ù,,Ø§Ù◆ØªØ±Ø§Ø¶ÙŠØ©.
- Ù...Ø¹Ø±Ù◆ Ù...Ù† Ù,Ø¯Ù,, Ø§Ù,,Ù...Ø³ØªØ®Ø-Ù... - Ù,,Ø§Ø³ØªØ®Ø-Ø§Ù... Ù,ÙŠÙ...Ø© •
Ù...Ø®ØªÙ,,Ù◆Ø©. ØœØ¯Ø®Ù,, Ø¹Ø¯ Ø§Ù,,Ù...ØØ§Ù^Ù,,Ø§Øª Ø§Ù,,ØªÙŠ ÙŠÙ,Ù^Ù...
Ø¯ Ù‡Ø§ Ø§Ù,,Ù...ØÙ^Ù,, Ù,Ø¯Ù,, Ø¥Ø¹ØªØ¯ Ø§Ø± ØØ-Ù^Ø« Ù◆Ø¹Ù,, Ù◆ÙŠ
Ø§Ù,,Ø§ØªØµØ§Ù,, Ø¯ Ø®Ø§Ø-Ù... RADIUS.

Ø§Ù,,Ø®Ø·Ù^Ø© 14

Ù◆ÙŠ ØÙ,Ù,, Ø§Ù,,Ù^Ù,Øª Ø§Ù,,Ù...ÙŠØªØœ Ø§Ù†Ù,,Ø± Ù◆Ù^Ù,, ØœØ¯ Ø§Ù,,ØœÙ...Ù^Ø± Ø§Ù,,ØªØ§Ù,,ÙŠØ©:

- ØœØ³ØªØ®Ø-Ù... Ø§Ù,,Ø§Ù◆ØªØ±Ø§Ø¶ÙŠ - Ù,,Ø§Ø³ØªØ®Ø-Ø§Ù... Ø§Ù,,Ù,ÙŠÙ...Ø© •
Ø§Ù,,Ø§Ù◆ØªØ±Ø§Ø¶ÙŠØ©.
- Ù...Ø¹Ø±Ù◆ Ù...Ù† Ù,Ø¯Ù,, Ø§Ù,,Ù...Ø³ØªØ®Ø-Ù... - Ù,,Ø§Ø³ØªØ®Ø-Ø§Ù... Ù,ÙŠÙ...Ø© •
Ù...Ø®ØªÙ,,Ù◆Ø©. ØœØ¯Ø®Ù,, Ø§Ù,,Ù^Ù,Øª Ø¯ Ø§Ù,,Ø-Ù,Ø§Ø|Ù, Ù,Ø¯Ù,, ØœÙ†
ÙŠØ¹Ù,,Ù† Ø§Ù,,Ù...ØÙ^Ù,, Ø¹Ù† Ø¹Ø-Ù... Ø¥Ø³ØªØ-Ø§Ø¯ Ø© Ø®Ø§Ø-Ù... RADIUS
ÙƒÙ,ÙŠÙ...Ø© Ù◆Ø§Ø±Ø°Ø© Ù^ÙŠÙ†Ù,Ù,, Ø¥Ù,,Ù% Ø§Ù,,Ø®Ø§Ø-Ù... Ø§Ù,,ØªØ§Ù,,ÙŠ
Ø§Ù,,Ù...ØªØ§Ø Ù,,Ù...ØØ§Ù^Ù,,Ø© Ø§Ù,,Ø§ØªØµØ§Ù,,.

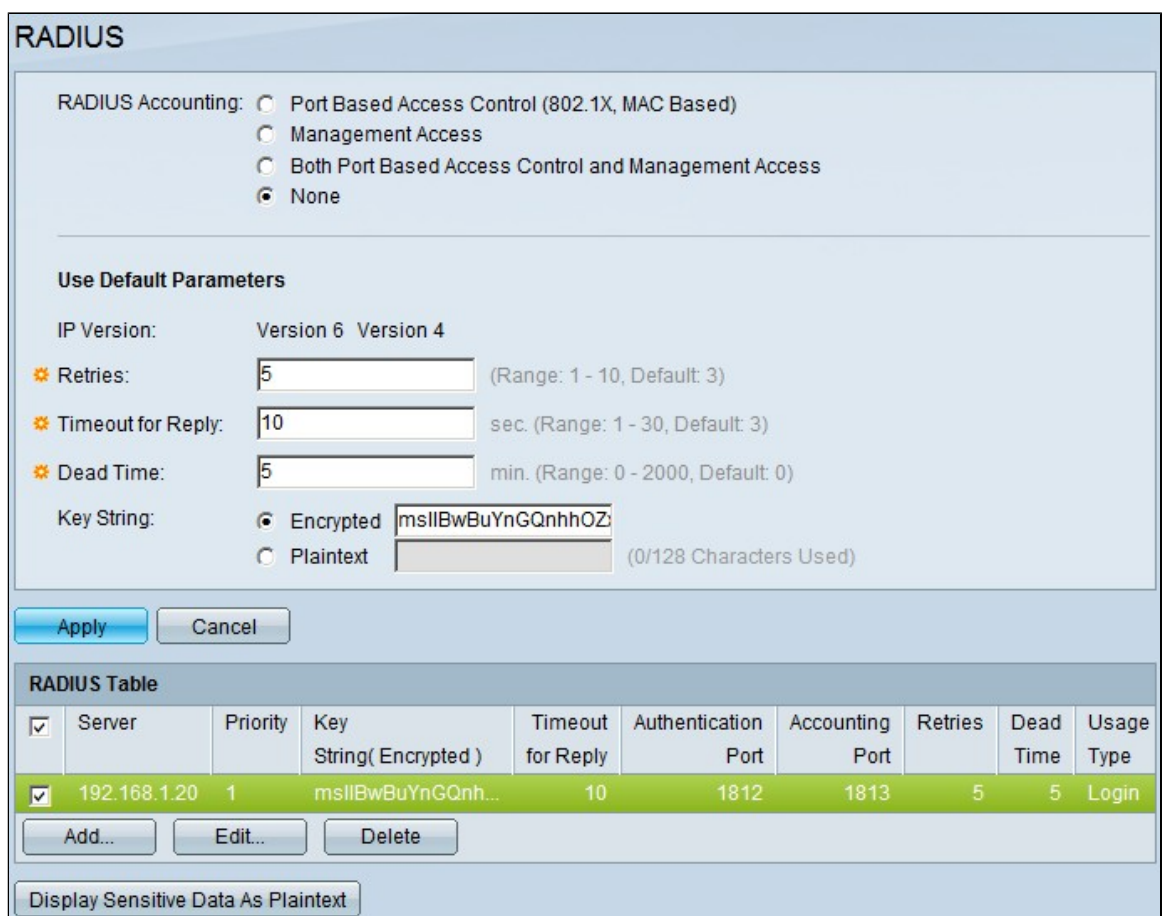
Ø§Ù,,Ø®Ø·Ù^Ø© 15

ù♦ùš ðù,, "ù†ù`ð¹ ð§ù,,ð§ð³ð³ð@ð`ð§ù..."ðœ ð§ù†ù,ð± ù♦ù`ù, ð£ùš ù...ù...ð§ ùšù,,ùš:

ð³ð-ùšù,, ð§ù,,ð-ð@ù`ù,, - ùšðð§ð-ù, ù...ð³ð`ù`ù,,ùš ð§ù,,ù...ðù`ù,, •
 802.1x - ùšð³ðù,ù, ð@ð§ð-ù... RADIUS ù...ù† ù...ð³ù`ð³ð³ð³ ð§ù,,ð£ù...ð§ù† •
 ù,,ù,,ù...ð³ð³ð@ð-ù...ùšù† ð§ù,,ð³ùšù† ùšð-ù,,ð-ù`ù† ð§ù,,ù`ðµ`ù,, ð¥ù,,ù%
 ð§ù,,ð-ð-ù†ð© ð§ð³ð³ù†ð§ð-ð§ ð¥ù,,ù% ù...ð@ð-ð- ð§ù,,ð³ðù†ù... ù♦ùš
 ð§ù,,ù`ðµù`ù,, ð¥ù,,ù% ð§ù,,ð´ð`ù†ð© (PNAC) ð§ù,,ù,ð§ð!ù... ð¹ù,,ù%
 ð§ù,,ù...ù†ù♦ð° 802.1x.
 all - ùšð³ð³ð@ð-ù... ù†ù,ð§ ð§ù,,ù†ù`ù¹ùšù† ù...ù† ð§ù,,ù...ðð§ð-ù,ð©. •

ð§ù,,ð@ð-ù`ð© 16

ð-ù,ð-ù,ð© ùšð-ð-ù,.



ð§ù,,ð@ð-ù`ð© 17

(ð¥ð@ð³ùšð§ð±ùš) ù,,ðð°ù♦ ð@ð§ð-ù... RADIUSðœ ù♦ùš ù,ð³ù... ð-ð-ù`ù,, RADIUSðœ ðð-ð` ð@ð§ù†ð© ð§ù,,ð§ð@ð³ùšð§ð± ù,,ð@ð§ð-ù... RADIUS ð§ù,,ð³ùš ð³ð±ùšð- ðð°ù♦ù‡ ù`ð§ù†ù,ð± ðð°ù♦.

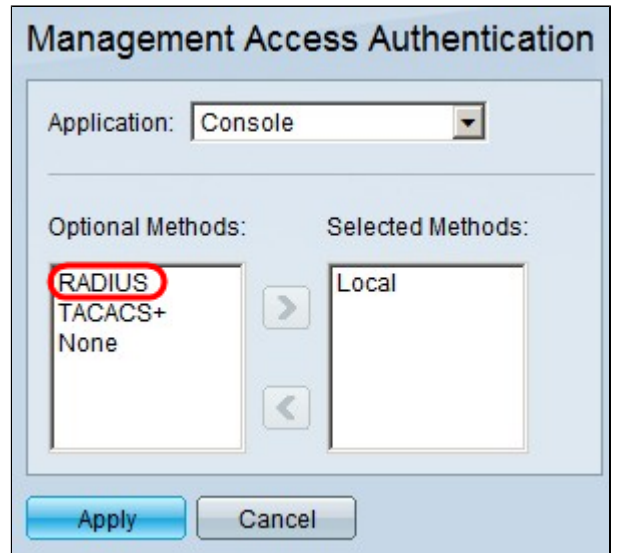
ù...ðð§ð-ù,ð© RADIUS

ð-ù...ð-ð±ð- ð³ù†ùšù† ð@ð§ð-ù... RADIUS ð-ð-ù†ù,, ððùšððœ ùšù,,ð²ù...ù† ù...ðð§ð-ù,ð³ù‡ ð¹ù,,ù% ð§ù,,ù...ðù`ù,, ùšð-ð±ð ù‡ð³ð§ ð§ù,,ù,ð³ù... ù†ùšù♦ùšð©

Ù...ØµØ§Ø`Ù,Ø© Ø®Ø§Ø`Ù... RADIUS Ø¹Ù,,Ù% ØÙ...ØÙ^Ù,,Ø§Øª 200/300
Ø§Ù,,Ù...Ø`Ø§Ø±Ø©.

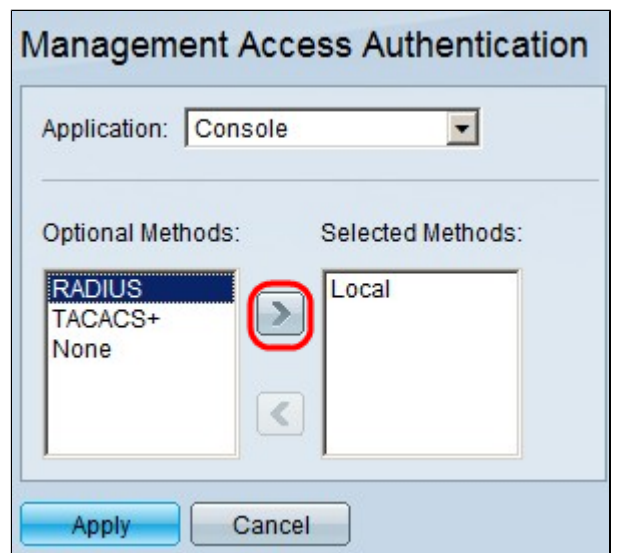
Ø§Ù,,Ø®Ø·Ù^Ø© 1

Ù,Ù... Ø·ØªØ³Ø-ÙŠÙ,, Ø§Ù,,Ø-Ø®Ù^Ù,, Ø¥Ù,,Ù% Ø§Ù,,Ø£Ø-Ø§Ø© Ø§Ù,,Ù...Ø³Ø§Ø¹Ø-Ø©
Ù,,ØªÙ`Ù^ÙŠÙ† Ø§Ù,,Ù^ÙŠØ` Ù^Ø§Ø®ØªØ± Ø§Ù,,Ø£Ù...Ø§Ù† > Ù...Ø®Ø§Ø`Ù,Ø© Ø§Ù,,Ù^Øµ^Ù,,
Ø¥Ù,,Ù% Ø§Ù,,Ø¥Ø-Ø§Ø±Ø©. ØªØ,Ù‡Ø± ØµØ`ØØ© Ù...Ø®Ø§Ø`Ù,Ø© Ø§Ù,,Ù^Øµ^Ù,,
Ù,,Ù,,Ø¥Ø-Ø§Ø±Ø©:



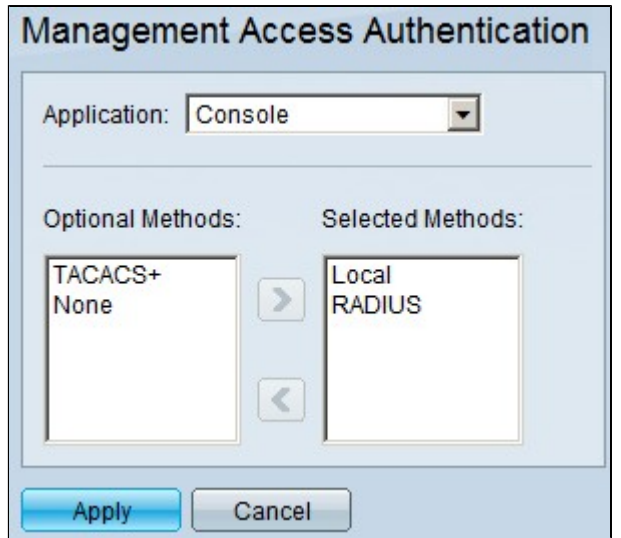
Ø§Ù,,Ø®Ø·Ù^Ø© 2

Ù`ÙŠ Ù,Ø§Ø|Ù...Ø© Ø§Ù,,Ø·Ø±Ù, Ø§Ù,,Ø§Ø®ØªÙŠØ§Ø±ÙŠØ©Ø©Ø£ Ø£Ø®ØªØ± RADIUS.



Ø§Ù,,Ø®Ø·Ù^Ø© 3

Ø§Ù†Ù,Ø± Ù`Ù^Ù, Ø§Ù,,Ø²Ø± >.



Ø§Ù,,Ø®Ø·Ù`Ø© 4

Ø·Ù,Ø·Ù,Ø© ùšØ·Ø·Ù,.

ةمچرتل هذه لوج

ةللأل تاينقتل نم ةومجم مادختساب دن تسمل اذه Cisco تچرت
ملاعلاء انء عي مج ي ف ني مدخت سمل ل معد ي وتحم مي دقتل ةيرشب ل و
امك ةقيقد نوك ت نل ةللأل ةمچرت ل ضفأ نأ ةظحال م ي جري. ةصاخل م هتغب
Cisco ي لخت. فرتحم مچرت م اهم دقي ي تل ةي فارتحال ةمچرتل عم ل حال وه
ىل إامءاد عوچرلاب ي صؤت و تامچرتل هذه ةقد ن ع اهتيل وئسم Cisco
Systems (رفوتم طبارل) ي لصلأل يزي لچن إل دن تسمل