

# ىلع تاداهش لاطبإ ةمئاق صرءف معد ننيكمت VPN 3000 Series زكرم

## المحتويات

[المقدمة](#)

[المتطلبات الأساسية](#)

[المتطلبات](#)

[المكونات المستخدمة](#)

[الاصطلاحات](#)

[تمكين دعم LDAP على المرجع المصدق](#)

[طلب شهادة الهوية على مركز VPN 3000](#)

[طلب شهادة الهوية على عميل VPN](#)

[تمكين دعم CRL على مركز VPN 3000](#)

[HTTP](#)

[LDAP](#)

[DN لتسجيل الدخول](#)

[كلمة المرور](#)

[عناوين LDAP أو HTTP](#)

[وقت التحديث](#)

[فرض التحديث التالي](#)

[تصحيح الأخطاء](#)

[مركز VPN 3000](#)

[عميل شبكة VPN](#)

[معلومات ذات صلة](#)

## المقدمة

يوضح هذا المستند كيفية تمكين قائمة إبطال الشهادات (CRL) للتحقق من الدعم على مركز VPN 3000 Series.

## المتطلبات الأساسية

### المتطلبات

لا توجد متطلبات خاصة لهذا المستند.

### المكونات المستخدمة

تتطبق المعلومات الواردة في هذا المستند على إصدارات البرامج والمكونات المادية التالية:

• برنامج مركز Cisco VPN 3000، الإصدار 4.1.x

• عميل شبكة VPN من Cisco، الإصدار x.4

• خادم شهادات Microsoft

ملاحظة: يتم استخدام خادم شهادات Microsoft في هذا المثال. غير أن تركيب الشهادات باستخدام خدمات أخرى للمرجع المصدق (CA) مماثل لذلك. توجد خوادم CA المدعومة في [عمل VPN ل Windows، الإصدار 3.0](#).

تم إنشاء المعلومات الواردة في هذا المستند من الأجهزة الموجودة في بيئة معملية خاصة. بدأت جميع الأجهزة المستخدمة في هذا المستند بتكوين ممسوح (افتراضي). إذا كانت شبكتك مباشرة، فتأكد من فهمك للتأثير المحتمل لأي أمر.

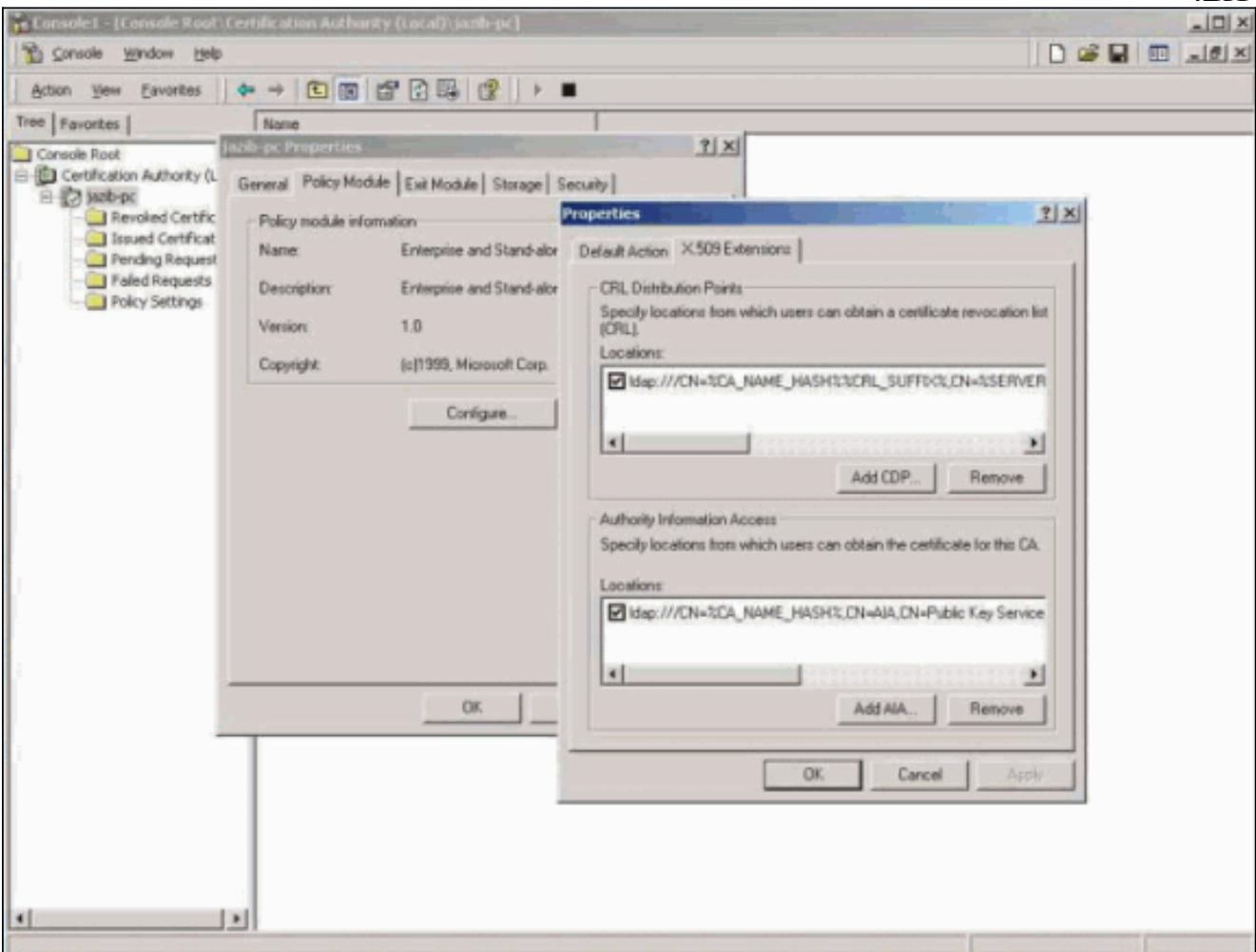
## [الاصطلاحات](#)

للحصول على مزيد من المعلومات حول اصطلاحات المستندات، ارجع إلى [اصطلاحات تلميحات Cisco التقنية](#).

## [تمكين دعم LDAP على المرجع المصدق](#)

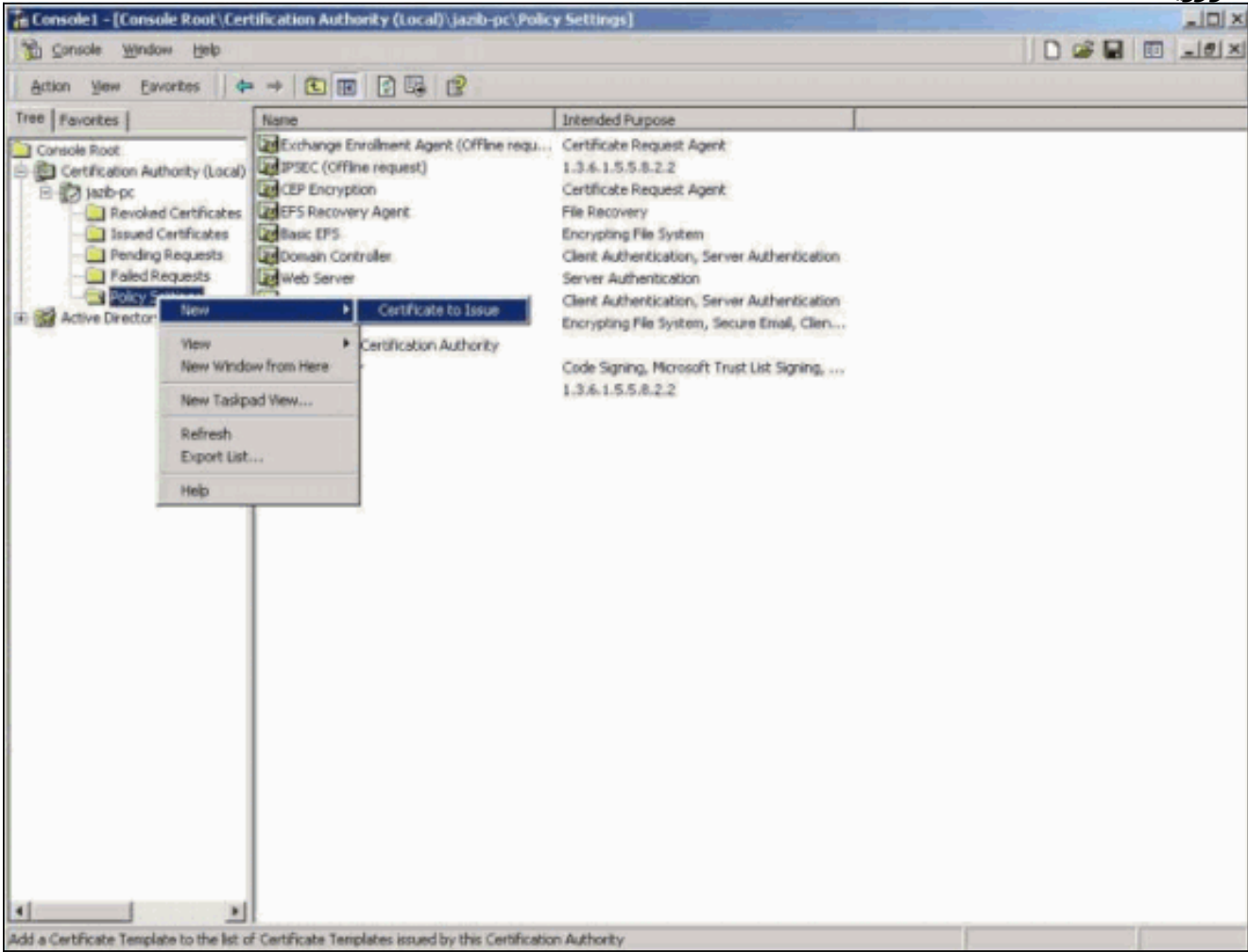
يدعم مركز VPN 3000 فحص CRL المستند إلى بروتوكول الوصول إلى الدليل خفيف الوزن (LDAP) فقط. إذا كنت تستخدم خادم CA الخاص ب Microsoft، فتأكد من تشغيل Windows 2000 مع تمكين خدمة Active Directory.

1. لتمكين دعم LDAP على الخادم، تأكد من فحص بروتوكول LDAP. أكمل الخطوات التالية: افتح وحدة تحكم الإدارة من MMC (Microsoft) وأضف مرجع شهادات. انقر بزر الماوس الأيمن فوق اسم خادم CA، ثم انقر فوق خصائص. حدد علامة التبويب "وحدة النهج النمطية"، ثم انقر فوق تكوين. حدد علامة التبويب امتدادات X509، وتأكد من تحديد LDAP فقط.

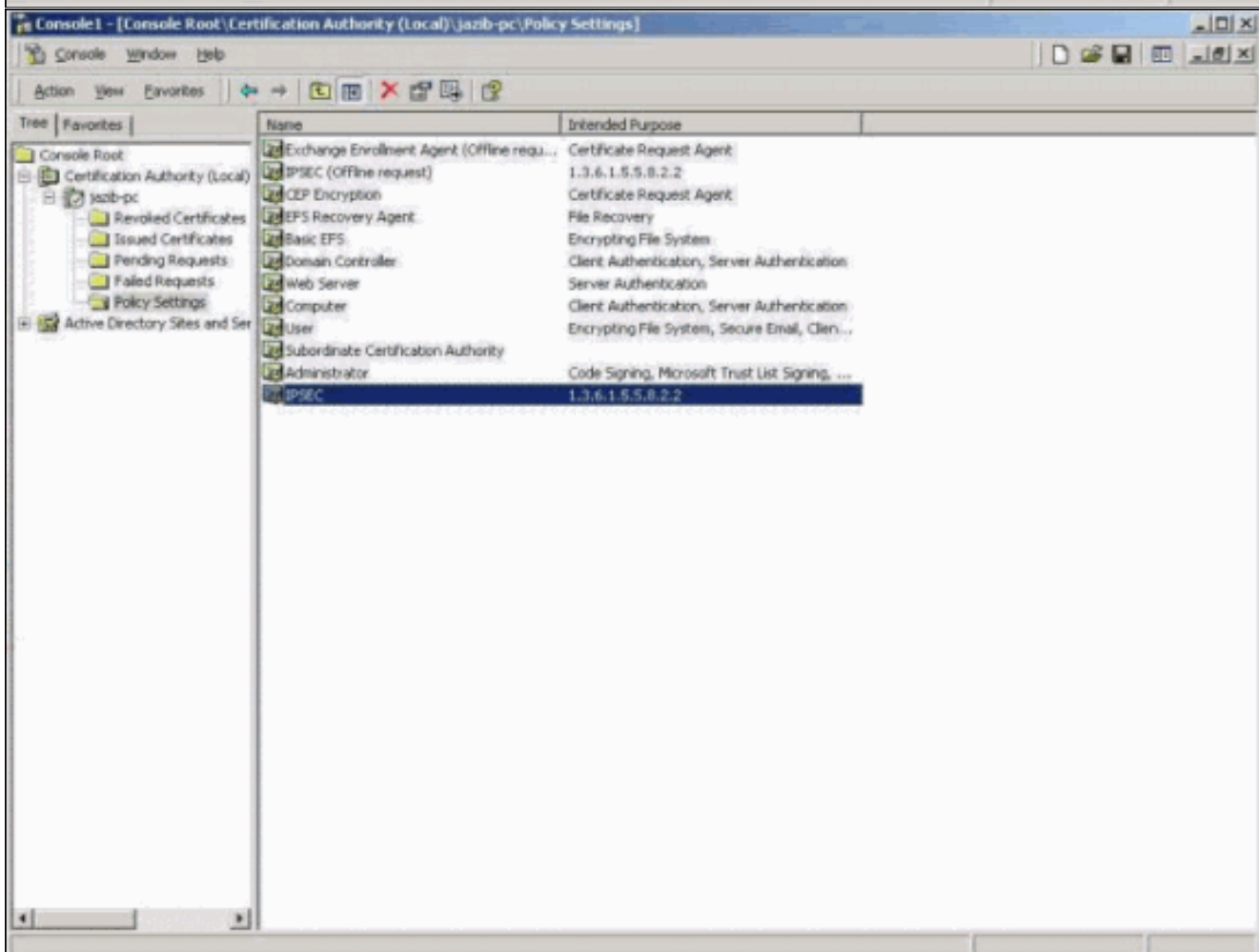
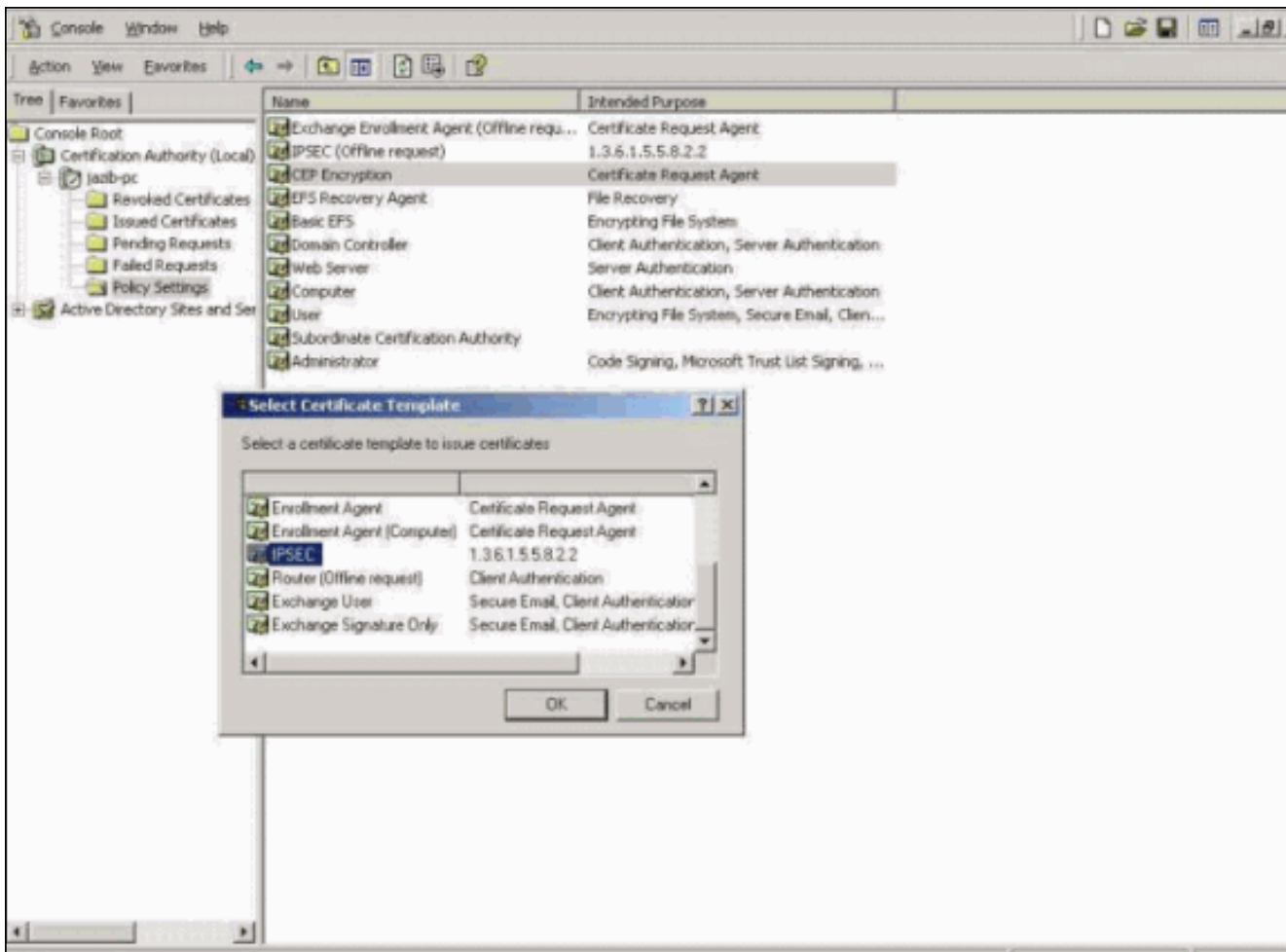


2. إنشاء ملف تعريف شهادة جديد يدعم تسجيل الشهادة المستند إلى الملف على خادم الشهادات المستند إلى

مؤسسة Windows 2000. انقر بزر الماوس الأيمن فوق إعدادات النهج، ثم قم بإضافة شهادة جديدة لإصدارها. ملاحظة: إذا كنت تستخدم خادم CA مستقل، فإن هذه الخطوة ليست ضرورية.

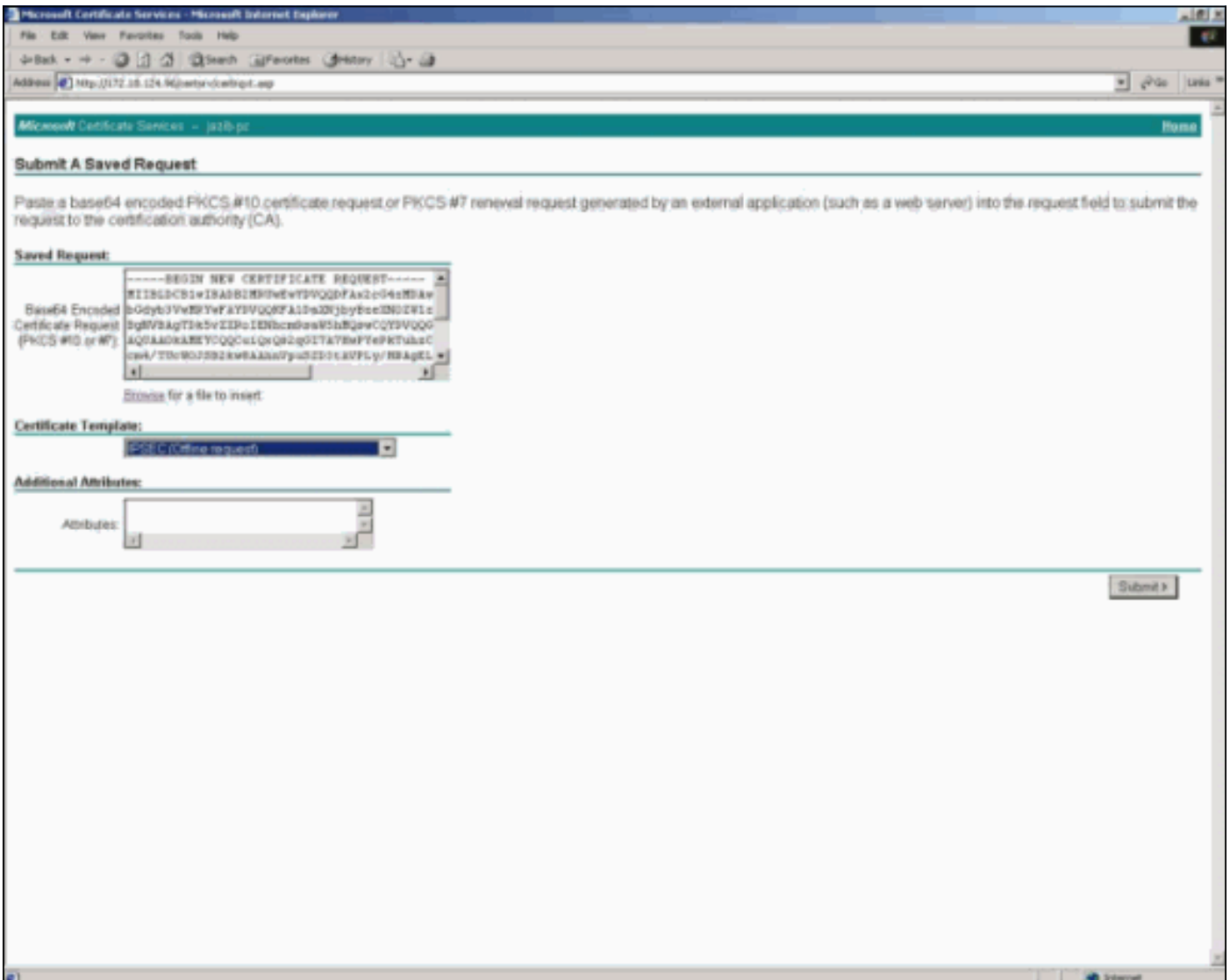


3. إضافة ملف تعريف الشهادة المستند إلى IPsec على خادم الشهادات.



## طلب شهادة الهوية على مركز VPN 3000

راجع [تكوين Cisco VPN 3000 Concentrator 3.0.x للحصول على شهادة رقمية](#) للحصول على معلومات حول كيفية طلب شهادة هوية. عند طلب شهادة هوية مركز الشبكة الخاصة الظاهرية (VPN)، تأكد من فحص IPsec (طلب دون اتصال) ضمن قالب الشهادة.



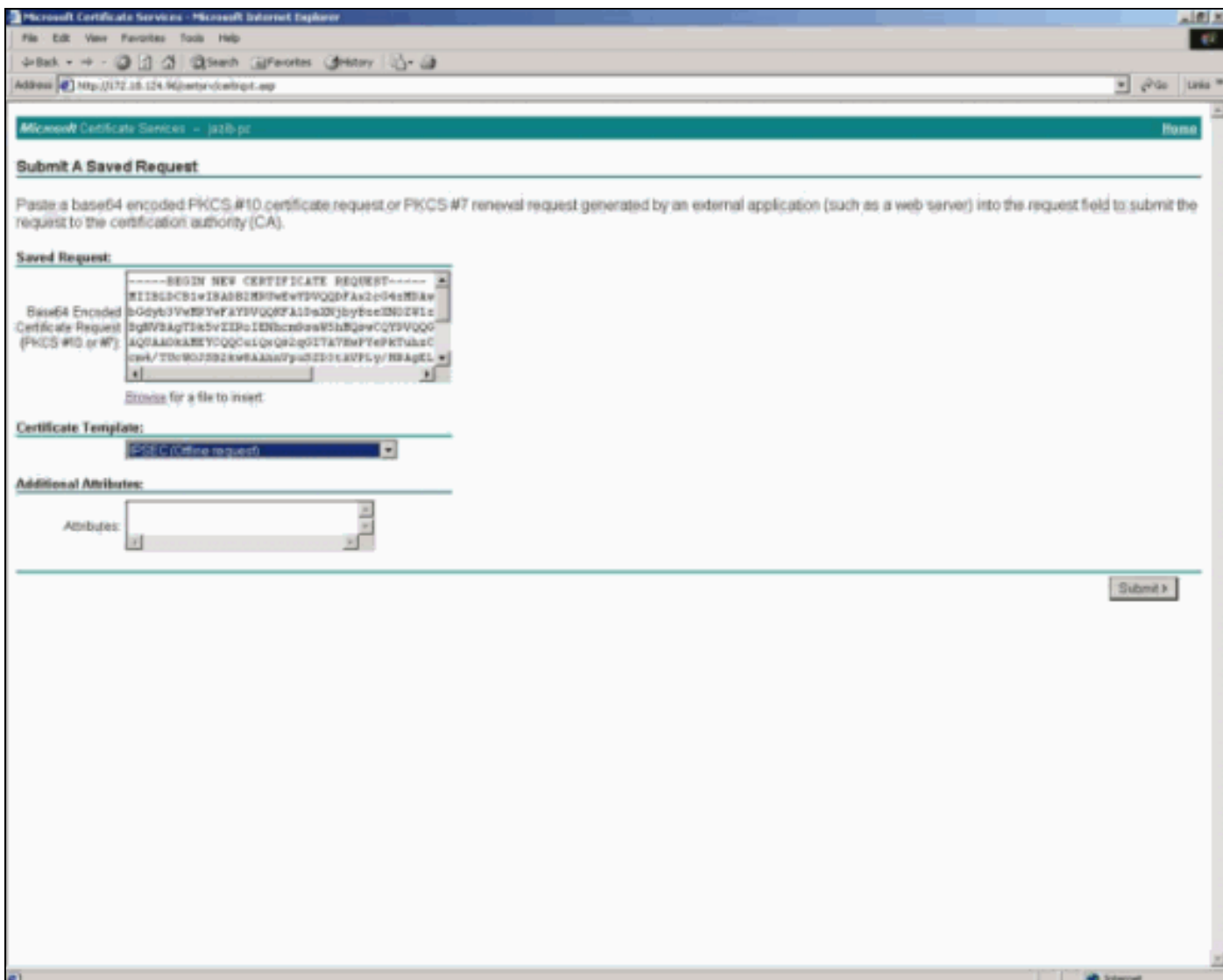
The screenshot shows the Microsoft Certificate Services web interface in Microsoft Internet Explorer. The address bar shows the URL: <http://172.16.124.90/ctrl/ctrlreqt.asp>. The page title is "Microsoft Certificate Services - jstb.p". The main heading is "Submit A Saved Request". Below this, there is a text area for pasting a base64 encoded PKCS #10 certificate request or PKCS #7 renewal request. A text box contains the following base64 encoded request:

```
-----BEGIN NEW CERTIFICATE REQUEST-----
MIIBGzCB1wIBADBNBQ8wVTPVQ0DFAx2e04eMBAw
b0dyb3VveBRYwFAYIVQ00FADa2N1byBec2N0Zl1z
bg8V2AgT1k5vEIPoIEBncnRw95k8QwCQYVQ00
AQIAA0kAREYDQ0CwLQwQ2g0T1k5vEIPoIEBncn
Rw95k8QwCQYVQ00FADa2N1byBec2N0Zl1z
cmw/TDc90J292k9FAAs7y402IP1c8VFLy/RFAGL
x
```

Below the text box, there is a "Certificate Template:" dropdown menu with "ESC/C (Offline request)" selected. There is also an "Additional Attributes:" section with an "Attributes:" dropdown menu. A "Submit" button is located at the bottom right of the form.

## طلب شهادة الهوية على عميل VPN

راجع [تكوين عميل VPN 3.0.x للحصول على شهادة رقمية](#) للحصول على معلومات حول كيفية طلب شهادة هوية. عند طلب شهادة الهوية لعميل VPN، تأكد من فحص IPsec (طلب دون اتصال) ضمن "قالب الشهادة" (مثل مركز VPN 3000).



## [تمكين دعم CRL على مركز VPN 3000](#)

لتمكين دعم CRL على مركز VPN 3000، حدد إدارة < إدارة الشهادات > الشهادات. ثم انقر على CRL في الشهادة الجذر. أثناء معالجة المرحلة الأولى، يمكن أن يقوم نظير IKE بتسليم شهادة تابعة لهذا الطرف. قد لا يتم تثبيت هذه الشهادة الفرعية على مركز الشبكة الخاصة الظاهرية (VPN). حدد خانة الاختيار قبول شهادات CA التابعة للسماح لمركز تركيز VPN باستخدام مثل هذه الشهادات الفرعية في التحقق من مسار الشهادة. قم بإلغاء تحديد خانة الاختيار لعدم السماح بالميزة.



أختر الخيار المناسب لتمكين أو تعطيل فحص CRL على جميع الشهادات التي تم إصدارها من قبل CA هذا. يمكن

لتركيز الشبكة الخاصة الظاهرية (VPN):

- **أستخدم نقاط توزيع CRL الثابتة** - أستخدم ما يصل إلى خمس نقاط توزيع CRL ثابتة. إذا أخترت هذا الخيار، حدد عناوين LDAP أو HTTP URLs على علامة تبويب بروتوكول CRL.
  - **أستخدم توزيع CRL المضمن في الشهادة التي تم تحديدها** - يسترجع مركز VPN ما يصل إلى خمس نقاط توزيع CRL من امتداد نقطة توزيع CRL للشهادة التي تم التحقق منها ويزيد من معلوماتها بالقيم الافتراضية التي تم تكوينها، إذا لزم الأمر. إذا كانت محاولة مركز الشبكة الخاصة الظاهرية (VPN) هي إسترداد قائمة تحكم في الوصول (CRL) باستخدام نقطة توزيع CRL الأساسية، فإنها تحاول إستخدام نقطة توزيع CRL التالية المتاحة في القائمة. ويستمر الحال هكذا حتى يتم إسترداد قائمة التحكم في الوصول (CRL) أو استنفاد القائمة.
  - **أستخدم نقاط توزيع CRL المدمجة في الشهادة التي تم تحديدها أو أستخدم نقاط توزيع CRL الثابتة** - إذا لم يتمكن مركز VPN من العثور على خمس نقاط توزيع CRL في الشهادة، فإنه يضيف نقاط توزيع CRL ثابتة، حتى حد الخمس نقاط.
  - **لا يوجد فحص CRL** - لا تقم بتمكين فحص CRL.
- إذا أخترت أي من الخيارات لتمكين فحص CRL، قم بتكوين بروتوكولات CRL التالية في علامة تبويب بروتوكول CRL.

Administration | Certificate Management | Configure CA Certificate

Certificate Acceptance CRL Retrieval CRL Protocol CRL Caching

Certificate RTP\_VPN\_2003\_ CRL Retrieval

**CRL Retrieval Policy**

<input type="radio"/>	No CRL checking	Choose the method to use to retrieve the CRL.
<input checked="" type="radio"/>	Use static CRL distribution points	
<input type="radio"/>	Use CRL distribution points embedded in certificate being checked	
<input type="radio"/>	Use CRL distribution points embedded in certificate being checked or else use static CRL distribution points	

Apply Cancel

أختار بروتوكول نقطة توزيع لاستخدامه في إسترداد CRL.

Certificate Acceptance		CRL Retrieval	CRL Protocol	CRL Caching
Certificate: RTP_VPN_2003_CA				
<b>CRL Distribution Points Protocols</b>				
<input checked="" type="checkbox"/>	HTTP	Choose a distribution point protocol to use to retrieve the CRL. If you choose HTTP, be sure to assign HTTP rules to the public interface filter. (For more information, click Help.) If you choose LDAP, configure the LDAP distribution point defaults below.		
<input checked="" type="checkbox"/>	LDAP			
	Server	172.18.124.96	Enter the hostname or IP address of the server.	
	Port	389	Enter the port number of the server. The default port is 389.	
	Login DN		Enter the login DN for access to the CRL on the server.	
	Password		Enter the password for the login DN.	
	Verify		Verify the password for the login DN.	
<b>LDAP or HTTP URLs</b>				
		<ul style="list-style-type: none"> <li>Enter up to 5 URLs to use to retrieve the CRL from the server.</li> <li>Enter each URL on a new line.</li> </ul>		
Apply		Cancel		

## [HTTP](#)

حدد خانة الاختيار HTTP لدعم إستخدام بروتوكول نقطة توزيع HTTP.

ملاحظة: إذا قمت بفحص HTTP، فتأكد من تعيين قواعد HTTP إلى عامل تصفية الواجهة العامة.

## [LDAP](#)

حدد خانة الاختيار LDAP لدعم إستخدام بروتوكول نقطة توزيع LDAP.

إذا اخترت دعم نقاط توزيع LDAP، فأدخل هذه المعلومات. إذا كان امتداد نقطة التوزيع للشهادة التي تم تحديدها مفقود لأي من هذه الحقول، فإن مركز VPN يستخدم هذه القيم.

- الخادم - (نقاط التوزيع المضمنة فقط.) أدخل عنوان IP أو اسم المضيف لخادم توزيع CRL (خادم LDAP). الحد الأقصى هو 32 حرفاً.
- المنفذ - (نقاط التوزيع المضمنة فقط.) أدخل رقم المنفذ لخادم CRL. دخلت 0 (التقصير) أن يتلقى النظام يزود التقصير ميناء رقم، 389 (LDAP).

## [DN لتسجيل الدخول](#)

إذا كان الخادم يتطلب هذا الحقل، فأدخل DN تسجيل الدخول (الاسم المميز). يحدد DN لتسجيل الدخول مسار الدليل للوصول إلى قاعدة بيانات CRL هذه. على سبيل المثال، cn=crl, ou=certs, o=CANam, c=US. الحد الأقصى لطول الحقل هو 128 حرفاً.

## [كلمة المرور](#)

إذا كان الخادم يتطلب كلمة مرور ل DN تسجيل الدخول، فأدخل كلمة المرور. الحد الأقصى هو 128 حرفاً.

أعد إدخال كلمة المرور للتحقق من ذلك. الحد الأقصى هو 128 حرفاً.



## عناوين LDAP أو HTTP

أدخل عناوين URL الخاصة ب HTTP أو LDAP التي تعرف قوائم التحكم في الوصول إلى CRLs الموجودة على الخوادم الخارجية. إذا اخترت نهج إسترداد CRL يستخدم نقاط توزيع ثابتة، يجب إدخال عنوان URL واحد على الأقل (وليس أكثر من خمسة) صالح. أدخل كل عنوان URL على سطر واحد. (قم بالتمرير إلى اليمين لإدخال قيم أطول). أمثلة عناوين URL الصحيحة هي:

HTTP URL: http://1.1.1.2/CertEnroll/TestCA6-8.crl •

LDAP URL: ldap://100.199.7.6:389/CN=TestCA6-8,CN=2KPCDC,CN=CDP,CN=Public الخدمات

الأساسية، DC=qa2000، DC=com، CN=Configuration، CN=Services، CN=CertificateRevocationList؟  
objectclass=cRLDistributionPoint؟

يمكن للمسؤول تحديد خانة الاختيار تمكين للسماح لتركيز VPN بتخزين CRLs الذي تم إسترداده مؤقتا. لم يتم إستخدام هذه الطريقة في هذا المثال. الإعداد الافتراضي ليس لتمكين التخزين المؤقت ل CRL. يعمل تعطيل التخزين المؤقت ل CRL (إلغاء تحديد خانة الاختيار) على مسح ذاكرة التخزين المؤقت ل CRL.

Certificate Acceptance		CRL Retrieval	CRL Protocol	CRL Caching
Certificate	RTP_VPN_2003_CA			
<b>CRL Caching</b>				
Enabled	<input type="checkbox"/>	Check to enable CRL caching. Disabling will clear CRL cache.		
Refresh Time	60	Enter the refresh time in minutes (5 - 1440). Enter 0 to use only the Next Update field in the cached CRL.		
Enforce Next Update	<input checked="" type="checkbox"/>	Check to enforce the Next Update field in CRLs. Checking this box will require valid CRLs to have a Next Update value that has not yet lapsed. Clearing the box will allow valid CRLs with no Next Update value or a Next Update value that has lapsed.		
Apply		Cancel		

## وقت التحديث

حدد وقت التحديث، بالدقائق، لذاكرة التخزين المؤقت ل CRL. المدى هو من 5 إلى 1440 دقيقة والقيمة الافتراضية هي 60 دقيقة.

أدخل 0 لاستخدام حقل "التحديث التالي"، إن كان موجودا، في قائمة التحكم في الوصول (CRL) المؤقتة. إذا لم يكن حقل "التحديث التالي" موجودا في CRL، فلن يتم تخزين CRL مؤقتا.

## فرض التحديث التالي

تتيح لك ميزة "فرض التحديث التالي" إمكانية التحكم في كيفية إستجابة مركز الشبكة الخاصة الظاهرية (VPN) للمستخدمين الذين يقومون بالتصديق باستخدام الشهادات عندما يكون CRL المقترن بتلك الشهادات قديما.

عندما يحاول المستخدم المصادقة باستخدام شهادة رقمية، يبحث مركز VPN عن أحدث CRL المرتبط بذلك الترخيص. يتحقق مركز الشبكة الخاصة الظاهرية (VPN) من حقل التحديث التالي في قائمة التحكم في الوصول الخاصة به (CRL) الحالية لتحديد ما إذا كان قد تتوفر قائمة تحكم في الوصول (CRL) أحدث. إذا كان تاريخ التحديث التالي محققا، فإن مركز VPN يستخدم CRL لمصادقة المستخدم. ومع ذلك، إذا انقضى التاريخ، يتصل مركز الشبكة الخاصة الظاهرية (VPN) بسلطة الشهادة لطلب قائمة تحكم في الوصول (CRL) أحدث.

يرسل المرجع المصدق CRL آخر. قد يكون CRL الجديد أحدث أو لا يكون أحدث. إذا كان حقل "التحديث التالي" في CRL الجديد حديث، فإن مركز VPN يستخدم CRL الجديد لمصادقة المستخدم. ومع ذلك، من الممكن أن تقوم جهة الترخيص بإعادة CRL آخر بحقل التحديث التالي القديم. إذا كان تاريخ التحديث التالي في قائمة التحكم في الوصول (CRL) الجديدة هذا قد تجاوزه بالفعل، فيمكن لتركيز الشبكة الخاصة الظاهرية (VPN) إستخدام قائمة التحكم في

الوصول الخاصة بالمنفذ (CRL) هذه أو عدم إستخدامها. يعتمد هذا على كيفية تكوين خيار فرض التحديث التالي.

من المحتمل أيضا ألا يحتوي CRL على حقل التحديث التالي.

حدد خانة الاختيار **فرض التحديث التالي** لطلب قائمة التحكم في الوصول (CRL) الحالية. إن يمكن، ال VPN Concentrator يرفض CRLs أن لا يتلقى Next Update مجال و CRLs أي يتلقى ال التالي تحديث مجال يتلقى.

قم بإلغاء تحديد المربع إذا كنت تريد أن يكون مركز VPN قادرا على إستخدام قوائم التحكم في الوصول للوسائط (CRLs) بدون حقل التحديث التالي أو قوائم التحكم في الوصول (CRLs) التي تم تجاوز حقل "التحديث التالي" لها.

## تصحيح الأخطاء

مكنت ال debugs بما أن [يشكل ال VPN 3000 مركز أن يتصل مع ال VPN زيون يستعمل شهادات](#) يصف. بمجرد تمكين تصحيح الأخطاء، تأكد من أن تصحيح الأخطاء الخاص بك مماثل لهذه الأخطاء.

### مركز VPN 3000

```
SEV=8 IKEDBG/0 RPT=261 172.18.124.96 15:24:04.680 08/27/2001 1
: RECEIVED Message (msgid=0) with payloads
HDR + SA (1) + VENDOR (13) + VENDOR (13) + VENDOR (13) + NONE (0) ... total length : 964
```

```
SEV=9 IKEDBG/0 RPT=262 172.18.124.96 15:24:04.680 08/27/2001 4
processing SA payload
```

```
SEV=8 IKEDBG/0 RPT=263 172.18.124.96 15:24:04.680 08/27/2001 5
Proposal # 1, Transform # 1, Type ISAKMP, Id IKE
:Parsing received transform
:Phase 1 failure against global IKE proposal # 1
:Mismatched attr types for class DH Group
Rcv'd: Oakley Group 5
Cfg'd: Oakley Group 2
```

```
SEV=8 IKEDBG/0 RPT=264 172.18.124.96 15:24:04.680 08/27/2001 10
:Phase 1 failure against global IKE proposal # 2
:Mismatched attr types for class DH Group
Rcv'd: Oakley Group 5
Cfg'd: Oakley Group 1
```

```
SEV=8 IKEDBG/0 RPT=265 172.18.124.96 15:24:04.680 08/27/2001 13
:Phase 1 failure against global IKE proposal # 3
:Mismatched attr types for class DH Group
Rcv'd: Oakley Group 5
Cfg'd: Oakley Group 1
```

```
SEV=8 IKEDBG/0 RPT=266 172.18.124.96 15:24:04.680 08/27/2001 16
:Phase 1 failure against global IKE proposal # 4
:Mismatched attr types for class DH Group
Rcv'd: Oakley Group 5
Cfg'd: Oakley Group 2
```

```
SEV=8 IKEDBG/0 RPT=267 172.18.124.96 15:24:04.680 08/27/2001 19
:Phase 1 failure against global IKE proposal # 5
:Mismatched attr types for class DH Group
Rcv'd: Oakley Group 5
Cfg'd: Oakley Group 1
```

SEV=8 IKEDBG/0 RPT=268 172.18.124.96 15:24:04.680 08/27/2001 22  
:Phase 1 failure against global IKE proposal # 6  
:Mismatched attr types for class DH Group  
Rcv'd: Oakley Group 5  
Cfg'd: Oakley Group 7

SEV=8 IKEDBG/0 RPT=269 172.18.124.96 15:24:04.680 08/27/2001 25  
:Phase 1 failure against global IKE proposal # 7  
:Mismatched attr types for class DH Group  
Rcv'd: Oakley Group 5  
Cfg'd: Oakley Group 2

SEV=8 IKEDBG/0 RPT=270 172.18.124.96 15:24:04.680 08/27/2001 28  
Proposal # 1, Transform # 2, Type ISAKMP, Id IKE  
:Parsing received transform  
:Phase 1 failure against global IKE proposal # 1  
:Mismatched attr types for class DH Group  
Rcv'd: Oakley Group 5  
Cfg'd: Oakley Group 2

SEV=8 IKEDBG/0 RPT=271 172.18.124.96 15:24:04.680 08/27/2001 33  
:Phase 1 failure against global IKE proposal # 2  
:Mismatched attr types for class DH Group  
Rcv'd: Oakley Group 5  
Cfg'd: Oakley Group 1

SEV=8 IKEDBG/0 RPT=272 172.18.124.96 15:24:04.680 08/27/2001 36  
:Phase 1 failure against global IKE proposal # 3  
:Mismatched attr types for class DH Group  
Rcv'd: Oakley Group 5  
Cfg'd: Oakley Group 1

SEV=8 IKEDBG/0 RPT=273 172.18.124.96 15:24:04.680 08/27/2001 39  
:Phase 1 failure against global IKE proposal # 4  
:Mismatched attr types for class DH Group  
Rcv'd: Oakley Group 5  
Cfg'd: Oakley Group 2

SEV=8 IKEDBG/0 RPT=274 172.18.124.96 15:24:04.680 08/27/2001 42  
:Phase 1 failure against global IKE proposal # 5  
:Mismatched attr types for class DH Group  
Rcv'd: Oakley Group 5  
Cfg'd: Oakley Group 1

SEV=8 IKEDBG/0 RPT=275 172.18.124.96 15:24:04.680 08/27/2001 45  
:Phase 1 failure against global IKE proposal # 6  
:Mismatched attr types for class DH Group  
Rcv'd: Oakley Group 5  
Cfg'd: Oakley Group 7

SEV=8 IKEDBG/0 RPT=276 172.18.124.96 15:24:04.680 08/27/2001 48  
:Phase 1 failure against global IKE proposal # 7  
:Mismatched attr types for class DH Group  
Rcv'd: Oakley Group 5  
Cfg'd: Oakley Group 2

SEV=8 IKEDBG/0 RPT=277 172.18.124.96 15:24:04.680 08/27/2001 51  
Proposal # 1, Transform # 3, Type ISAKMP, Id IKE  
:Parsing received transform  
:Phase 1 failure against global IKE proposal # 1  
:Mismatched attr types for class DH Group  
Rcv'd: Oakley Group 5  
Cfg'd: Oakley Group 2

SEV=8 IKEDBG/0 RPT=278 172.18.124.96 15:24:04.680 08/27/2001 56  
:Phase 1 failure against global IKE proposal # 2  
:Mismatched attr types for class DH Group  
Rcv'd: Oakley Group 5  
Cfg'd: Oakley Group 1

SEV=8 IKEDBG/0 RPT=279 172.18.124.96 15:24:04.680 08/27/2001 59  
:Phase 1 failure against global IKE proposal # 3  
:Mismatched attr types for class DH Group  
Rcv'd: Oakley Group 5  
Cfg'd: Oakley Group 1

SEV=8 IKEDBG/0 RPT=280 172.18.124.96 15:24:04.680 08/27/2001 62  
:Phase 1 failure against global IKE proposal # 4  
:Mismatched attr types for class DH Group  
Rcv'd: Oakley Group 5  
Cfg'd: Oakley Group 2

SEV=8 IKEDBG/0 RPT=281 172.18.124.96 15:24:04.680 08/27/2001 65  
:Phase 1 failure against global IKE proposal # 5  
:Mismatched attr types for class DH Group  
Rcv'd: Oakley Group 5  
Cfg'd: Oakley Group 1

SEV=8 IKEDBG/0 RPT=282 172.18.124.96 15:24:04.680 08/27/2001 68  
:Phase 1 failure against global IKE proposal # 6  
:Mismatched attr types for class DH Group  
Rcv'd: Oakley Group 5  
Cfg'd: Oakley Group 7

SEV=8 IKEDBG/0 RPT=283 172.18.124.96 15:24:04.680 08/27/2001 71  
:Phase 1 failure against global IKE proposal # 7  
:Mismatched attr types for class DH Group  
Rcv'd: Oakley Group 5  
Cfg'd: Oakley Group 2

SEV=8 IKEDBG/0 RPT=284 172.18.124.96 15:24:04.680 08/27/2001 74  
Proposal # 1, Transform # 4, Type ISAKMP, Id IKE  
:Parsing received transform  
:Phase 1 failure against global IKE proposal # 1  
:Mismatched attr types for class DH Group  
Rcv'd: Oakley Group 5  
Cfg'd: Oakley Group 2

SEV=8 IKEDBG/0 RPT=285 172.18.124.96 15:24:04.680 08/27/2001 79  
:Phase 1 failure against global IKE proposal # 2  
:Mismatched attr types for class DH Group  
Rcv'd: Oakley Group 5  
Cfg'd: Oakley Group 1

SEV=8 IKEDBG/0 RPT=286 172.18.124.96 15:24:04.680 08/27/2001 82  
:Phase 1 failure against global IKE proposal # 3  
:Mismatched attr types for class DH Group  
Rcv'd: Oakley Group 5  
Cfg'd: Oakley Group 1

SEV=8 IKEDBG/0 RPT=287 172.18.124.96 15:24:04.680 08/27/2001 85  
:Phase 1 failure against global IKE proposal # 4  
:Mismatched attr types for class DH Group  
Rcv'd: Oakley Group 5  
Cfg'd: Oakley Group 2

SEV=8 IKEDBG/0 RPT=288 172.18.124.96 15:24:04.680 08/27/2001 88  
:Phase 1 failure against global IKE proposal # 5

:Mismatched attr types for class DH Group  
Rcv'd: Oakley Group 5  
Cfg'd: Oakley Group 1

SEV=8 IKEDBG/0 RPT=289 172.18.124.96 15:24:04.680 08/27/2001 91  
:Phase 1 failure against global IKE proposal # 6  
:Mismatched attr types for class DH Group  
Rcv'd: Oakley Group 5  
Cfg'd: Oakley Group 7

SEV=8 IKEDBG/0 RPT=290 172.18.124.96 15:24:04.680 08/27/2001 94  
:Phase 1 failure against global IKE proposal # 7  
:Mismatched attr types for class DH Group  
Rcv'd: Oakley Group 5  
Cfg'd: Oakley Group 2

SEV=8 IKEDBG/0 RPT=291 172.18.124.96 15:24:04.680 08/27/2001 97  
Proposal # 1, Transform # 5, Type ISAKMP, Id IKE  
:Parsing received transform  
:Phase 1 failure against global IKE proposal # 1  
:Mismatched attr types for class Hash Alg  
Rcv'd: SHA  
Cfg'd: MD5

SEV=8 IKEDBG/0 RPT=292 172.18.124.96 15:24:04.680 08/27/2001 101  
:Phase 1 failure against global IKE proposal # 2  
:Mismatched attr types for class DH Group  
Rcv'd: Oakley Group 2  
Cfg'd: Oakley Group 1

SEV=8 IKEDBG/0 RPT=293 172.18.124.96 15:24:04.680 08/27/2001 104  
:Phase 1 failure against global IKE proposal # 3  
:Mismatched attr types for class DH Group  
Rcv'd: Oakley Group 2  
Cfg'd: Oakley Group 1

SEV=8 IKEDBG/0 RPT=294 172.18.124.96 15:24:04.680 08/27/2001 107  
:Phase 1 failure against global IKE proposal # 4  
:Mismatched attr types for class Hash Alg  
Rcv'd: SHA  
Cfg'd: MD5

SEV=8 IKEDBG/0 RPT=295 172.18.124.96 15:24:04.680 08/27/2001 109  
:Phase 1 failure against global IKE proposal # 5  
:Mismatched attr types for class DH Group  
Rcv'd: Oakley Group 2  
Cfg'd: Oakley Group 1

SEV=8 IKEDBG/0 RPT=296 172.18.124.96 15:24:04.680 08/27/2001 112  
:Phase 1 failure against global IKE proposal # 6  
:Mismatched attr types for class DH Group  
Rcv'd: Oakley Group 2  
Cfg'd: Oakley Group 7

SEV=8 IKEDBG/0 RPT=297 172.18.124.96 15:24:04.680 08/27/2001 115  
:Phase 1 failure against global IKE proposal # 7  
:Mismatched attr types for class Hash Alg  
Rcv'd: SHA  
Cfg'd: MD5

SEV=7 IKEDBG/0 RPT=298 172.18.124.96 15:24:04.680 08/27/2001 117  
Oakley proposal is acceptable

SEV=9 IKEDBG/47 RPT=7 172.18.124.96 15:24:04.680 08/27/2001 118

processing VID payload

SEV=9 IKEDBG/49 RPT=7 172.18.124.96 15:24:04.680 08/27/2001 119  
Received xauth V6 VID

SEV=9 IKEDBG/47 RPT=8 172.18.124.96 15:24:04.680 08/27/2001 120  
processing VID payload

SEV=9 IKEDBG/49 RPT=8 172.18.124.96 15:24:04.680 08/27/2001 121  
Received DPD VID

SEV=9 IKEDBG/47 RPT=9 172.18.124.96 15:24:04.680 08/27/2001 122  
processing VID payload

SEV=9 IKEDBG/49 RPT=9 172.18.124.96 15:24:04.680 08/27/2001 123  
Received Cisco Unity client VID

SEV=9 IKEDBG/0 RPT=299 172.18.124.96 15:24:04.680 08/27/2001 124  
processing IKE SA

SEV=8 IKEDBG/0 RPT=300 172.18.124.96 15:24:04.680 08/27/2001 125  
Proposal # 1, Transform # 1, Type ISAKMP, Id IKE  
:Parsing received transform  
:Phase 1 failure against global IKE proposal # 1  
:Mismatched attr types for class DH Group  
Rcv'd: Oakley Group 5  
Cfg'd: Oakley Group 2

SEV=8 IKEDBG/0 RPT=301 172.18.124.96 15:24:04.680 08/27/2001 130  
:Phase 1 failure against global IKE proposal # 2  
:Mismatched attr types for class DH Group  
Rcv'd: Oakley Group 5  
Cfg'd: Oakley Group 1

SEV=8 IKEDBG/0 RPT=302 172.18.124.96 15:24:04.680 08/27/2001 133  
:Phase 1 failure against global IKE proposal # 3  
:Mismatched attr types for class DH Group  
Rcv'd: Oakley Group 5  
Cfg'd: Oakley Group 1

SEV=8 IKEDBG/0 RPT=303 172.18.124.96 15:24:04.680 08/27/2001 136  
:Phase 1 failure against global IKE proposal # 4  
:Mismatched attr types for class DH Group  
Rcv'd: Oakley Group 5  
Cfg'd: Oakley Group 2

SEV=8 IKEDBG/0 RPT=304 172.18.124.96 15:24:04.680 08/27/2001 139  
:Phase 1 failure against global IKE proposal # 5  
:Mismatched attr types for class DH Group  
Rcv'd: Oakley Group 5  
Cfg'd: Oakley Group 1

SEV=8 IKEDBG/0 RPT=305 172.18.124.96 15:24:04.680 08/27/2001 142  
:Phase 1 failure against global IKE proposal # 6  
:Mismatched attr types for class DH Group  
Rcv'd: Oakley Group 5  
Cfg'd: Oakley Group 7

SEV=8 IKEDBG/0 RPT=306 172.18.124.96 15:24:04.680 08/27/2001 145  
:Phase 1 failure against global IKE proposal # 7  
:Mismatched attr types for class DH Group  
Rcv'd: Oakley Group 5  
Cfg'd: Oakley Group 2

SEV=8 IKEDBG/0 RPT=307 172.18.124.96 15:24:04.680 08/27/2001 148  
Proposal # 1, Transform # 2, Type ISAKMP, Id IKE  
:Parsing received transform  
:Phase 1 failure against global IKE proposal # 1  
:Mismatched attr types for class DH Group  
Rcv'd: Oakley Group 5  
Cfg'd: Oakley Group 2

SEV=8 IKEDBG/0 RPT=308 172.18.124.96 15:24:04.680 08/27/2001 153  
:Phase 1 failure against global IKE proposal # 2  
:Mismatched attr types for class DH Group  
Rcv'd: Oakley Group 5  
Cfg'd: Oakley Group 1

SEV=8 IKEDBG/0 RPT=309 172.18.124.96 15:24:04.680 08/27/2001 156  
:Phase 1 failure against global IKE proposal # 3  
:Mismatched attr types for class DH Group  
Rcv'd: Oakley Group 5  
Cfg'd: Oakley Group 1

SEV=8 IKEDBG/0 RPT=310 172.18.124.96 15:24:04.680 08/27/2001 159  
:Phase 1 failure against global IKE proposal # 4  
:Mismatched attr types for class DH Group  
Rcv'd: Oakley Group 5  
Cfg'd: Oakley Group 2

SEV=8 IKEDBG/0 RPT=311 172.18.124.96 15:24:04.680 08/27/2001 162  
:Phase 1 failure against global IKE proposal # 5  
:Mismatched attr types for class DH Group  
Rcv'd: Oakley Group 5  
Cfg'd: Oakley Group 1

SEV=8 IKEDBG/0 RPT=312 172.18.124.96 15:24:04.680 08/27/2001 165  
:Phase 1 failure against global IKE proposal # 6  
:Mismatched attr types for class DH Group  
Rcv'd: Oakley Group 5  
Cfg'd: Oakley Group 7

SEV=8 IKEDBG/0 RPT=313 172.18.124.96 15:24:04.680 08/27/2001 168  
:Phase 1 failure against global IKE proposal # 7  
:Mismatched attr types for class DH Group  
Rcv'd: Oakley Group 5  
Cfg'd: Oakley Group 2

SEV=8 IKEDBG/0 RPT=314 172.18.124.96 15:24:04.680 08/27/2001 171  
Proposal # 1, Transform # 3, Type ISAKMP, Id IKE  
:Parsing received transform  
:Phase 1 failure against global IKE proposal # 1  
:Mismatched attr types for class DH Group  
Rcv'd: Oakley Group 5  
Cfg'd: Oakley Group 2

SEV=8 IKEDBG/0 RPT=315 172.18.124.96 15:24:04.680 08/27/2001 176  
:Phase 1 failure against global IKE proposal # 2  
:Mismatched attr types for class DH Group  
Rcv'd: Oakley Group 5  
Cfg'd: Oakley Group 1

SEV=8 IKEDBG/0 RPT=316 172.18.124.96 15:24:04.680 08/27/2001 179  
:Phase 1 failure against global IKE proposal # 3  
:Mismatched attr types for class DH Group  
Rcv'd: Oakley Group 5  
Cfg'd: Oakley Group 1

SEV=8 IKEDBG/0 RPT=317 172.18.124.96 15:24:04.680 08/27/2001 182  
:Phase 1 failure against global IKE proposal # 4  
:Mismatched attr types for class DH Group  
Rcv'd: Oakley Group 5  
Cfg'd: Oakley Group 2

SEV=8 IKEDBG/0 RPT=318 172.18.124.96 15:24:04.680 08/27/2001 185  
:Phase 1 failure against global IKE proposal # 5  
:Mismatched attr types for class DH Group  
Rcv'd: Oakley Group 5  
Cfg'd: Oakley Group 1

SEV=8 IKEDBG/0 RPT=319 172.18.124.96 15:24:04.680 08/27/2001 188  
:Phase 1 failure against global IKE proposal # 6  
:Mismatched attr types for class DH Group  
Rcv'd: Oakley Group 5  
Cfg'd: Oakley Group 7

SEV=8 IKEDBG/0 RPT=320 172.18.124.96 15:24:04.680 08/27/2001 191  
:Phase 1 failure against global IKE proposal # 7  
:Mismatched attr types for class DH Group  
Rcv'd: Oakley Group 5  
Cfg'd: Oakley Group 2

SEV=8 IKEDBG/0 RPT=321 172.18.124.96 15:24:04.690 08/27/2001 194  
Proposal # 1, Transform # 4, Type ISAKMP, Id IKE  
:Parsing received transform  
:Phase 1 failure against global IKE proposal # 1  
:Mismatched attr types for class DH Group  
Rcv'd: Oakley Group 5  
Cfg'd: Oakley Group 2

SEV=8 IKEDBG/0 RPT=322 172.18.124.96 15:24:04.690 08/27/2001 199  
:Phase 1 failure against global IKE proposal # 2  
:Mismatched attr types for class DH Group  
Rcv'd: Oakley Group 5  
Cfg'd: Oakley Group 1

SEV=8 IKEDBG/0 RPT=323 172.18.124.96 15:24:04.690 08/27/2001 202  
:Phase 1 failure against global IKE proposal # 3  
:Mismatched attr types for class DH Group  
Rcv'd: Oakley Group 5  
Cfg'd: Oakley Group 1

SEV=8 IKEDBG/0 RPT=324 172.18.124.96 15:24:04.690 08/27/2001 205  
:Phase 1 failure against global IKE proposal # 4  
:Mismatched attr types for class DH Group  
Rcv'd: Oakley Group 5  
Cfg'd: Oakley Group 2

SEV=8 IKEDBG/0 RPT=325 172.18.124.96 15:24:04.690 08/27/2001 208  
:Phase 1 failure against global IKE proposal # 5  
:Mismatched attr types for class DH Group  
Rcv'd: Oakley Group 5  
Cfg'd: Oakley Group 1

SEV=8 IKEDBG/0 RPT=326 172.18.124.96 15:24:04.690 08/27/2001 211  
:Phase 1 failure against global IKE proposal # 6  
:Mismatched attr types for class DH Group  
Rcv'd: Oakley Group 5  
Cfg'd: Oakley Group 7

SEV=8 IKEDBG/0 RPT=327 172.18.124.96 15:24:04.690 08/27/2001 214  
:Phase 1 failure against global IKE proposal # 7



```
:Mismatched attr types for class DH Group
    Rcv'd: Oakley Group 5
    Cfg'd: Oakley Group 2

SEV=8 IKEDBG/0 RPT=328 172.18.124.96 15:24:04.690 08/27/2001 217
    Proposal # 1, Transform # 5, Type ISAKMP, Id IKE
    :Parsing received transform
:Phase 1 failure against global IKE proposal # 1
    :Mismatched attr types for class Hash Alg
        Rcv'd: SHA
        Cfg'd: MD5

SEV=8 IKEDBG/0 RPT=329 172.18.124.96 15:24:04.690 08/27/2001 221
    :Phase 1 failure against global IKE proposal # 2
    :Mismatched attr types for class DH Group
        Rcv'd: Oakley Group 2
        Cfg'd: Oakley Group 1

SEV=8 IKEDBG/0 RPT=330 172.18.124.96 15:24:04.690 08/27/2001 224
    :Phase 1 failure against global IKE proposal # 3
    :Mismatched attr types for class DH Group
        Rcv'd: Oakley Group 2
        Cfg'd: Oakley Group 1

SEV=8 IKEDBG/0 RPT=331 172.18.124.96 15:24:04.690 08/27/2001 227
    :Phase 1 failure against global IKE proposal # 4
    :Mismatched attr types for class Hash Alg
        Rcv'd: SHA
        Cfg'd: MD5

SEV=8 IKEDBG/0 RPT=332 172.18.124.96 15:24:04.690 08/27/2001 229
    :Phase 1 failure against global IKE proposal # 5
    :Mismatched attr types for class DH Group
        Rcv'd: Oakley Group 2
        Cfg'd: Oakley Group 1

SEV=8 IKEDBG/0 RPT=333 172.18.124.96 15:24:04.690 08/27/2001 232
    :Phase 1 failure against global IKE proposal # 6
    :Mismatched attr types for class DH Group
        Rcv'd: Oakley Group 2
        Cfg'd: Oakley Group 7

SEV=8 IKEDBG/0 RPT=334 172.18.124.96 15:24:04.690 08/27/2001 235
    :Phase 1 failure against global IKE proposal # 7
    :Mismatched attr types for class Hash Alg
        Rcv'd: SHA
        Cfg'd: MD5

SEV=7 IKEDBG/28 RPT=3 172.18.124.96 15:24:04.690 08/27/2001 237
    IKE SA Proposal # 1, Transform # 6 acceptable
    Matches global IKE entry # 1

SEV=8 AUTHDBG/1 RPT=7 15:24:04.690 08/27/2001 238
    AUTH_Open() returns 6

SEV=7 AUTH/12 RPT=7 15:24:04.690 08/27/2001 239
    Authentication session opened: handle = 6

SEV=9 IKEDBG/0 RPT=335 172.18.124.96 15:24:04.690 08/27/2001 240
    constructing ISA_SA for isakmp

SEV=8 IKEDBG/0 RPT=336 172.18.124.96 15:24:04.690 08/27/2001 241
    : SENDING Message (msgid=0) with payloads
    HDR + SA (1) ... total length : 84
```

SEV=8 IKEDBG/0 RPT=337 172.18.124.96 15:24:04.730 08/27/2001 242  
: RECEIVED Message (msgid=0) with payloads  
HDR + KE (4) + NONCE (10) + NONE (0) ... total length : 184

SEV=8 IKEDBG/0 RPT=338 172.18.124.96 15:24:04.730 08/27/2001 244  
: RECEIVED Message (msgid=0) with payloads  
HDR + KE (4) + NONCE (10) + NONE (0) ... total length : 184

SEV=9 IKEDBG/0 RPT=339 172.18.124.96 15:24:04.730 08/27/2001 246  
processing ke payload

SEV=9 IKEDBG/0 RPT=340 172.18.124.96 15:24:04.730 08/27/2001 247  
processing ISA\_KE

SEV=9 IKEDBG/1 RPT=41 172.18.124.96 15:24:04.730 08/27/2001 248  
processing nonce payload

SEV=9 IKEDBG/0 RPT=341 172.18.124.96 15:24:04.780 08/27/2001 249  
constructing ke payload

SEV=9 IKEDBG/1 RPT=42 172.18.124.96 15:24:04.780 08/27/2001 250  
constructing nonce payload

SEV=9 IKEDBG/46 RPT=8 172.18.124.96 15:24:04.780 08/27/2001 251  
constructing Cisco Unity VID payload

SEV=9 IKEDBG/46 RPT=9 172.18.124.96 15:24:04.780 08/27/2001 252  
constructing xauth V6 VID payload

SEV=9 IKEDBG/48 RPT=5 172.18.124.96 15:24:04.780 08/27/2001 253  
Send IOS VID

SEV=9 IKEDBG/38 RPT=3 172.18.124.96 15:24:04.780 08/27/2001 254  
:Constructing VPN 3000 spoofing IOS Vendor ID payload (version  
(capabilities: 20000001 ,1.0.0

SEV=9 IKEDBG/46 RPT=10 172.18.124.96 15:24:04.780 08/27/2001 256  
constructing VID payload

SEV=9 IKEDBG/48 RPT=6 172.18.124.96 15:24:04.780 08/27/2001 257  
Send Altiga GW VID

SEV=9 IKE/0 RPT=5 172.18.124.96 15:24:04.780 08/27/2001 258  
...Generating keys for Responder

SEV=8 IKEDBG/0 RPT=342 172.18.124.96 15:24:04.790 08/27/2001 259  
: SENDING Message (msgid=0) with payloads  
HDR + KE (4) ... total length : 395

SEV=8 IKEDBG/0 RPT=343 172.18.124.96 15:24:04.850 08/27/2001 260  
: RECEIVED Message (msgid=0) with payloads  
+ (HDR + ID (5) + CERT (6) + CERT\_REQ (7) + SIG (9) + NOTIFY (11  
NONE (0) ... total length : 1901

SEV=9 IKEDBG/1 RPT=43 172.18.124.96 15:24:04.850 08/27/2001 263  
Processing ID

SEV=9 IKEDBG/0 RPT=344 172.18.124.96 15:24:04.850 08/27/2001 264  
processing cert payload

SEV=9 IKEDBG/0 RPT=345 172.18.124.96 15:24:04.850 08/27/2001 265  
processing cert request payload

SEV=9 IKEDBG/1 RPT=44 172.18.124.96 15:24:04.850 08/27/2001 266  
processing RSA signature

SEV=9 IKEDBG/0 RPT=346 172.18.124.96 15:24:04.850 08/27/2001 267  
computing hash

SEV=9 IKEDBG/0 RPT=347 172.18.124.96 15:24:04.860 08/27/2001 268  
Processing Notify payload

SEV=9 IKEDBG/23 RPT=3 172.18.124.96 15:24:04.860 08/27/2001 269  
Starting group lookup for peer 172.18.124.96

SEV=9 IKE/21 RPT=3 172.18.124.96 15:24:04.860 08/27/2001 270  
No Group found by matching IP Address of Cert peer 172.18.124.96

SEV=8 AUTHDBG/1 RPT=8 15:24:04.860 08/27/2001 271  
AUTH\_Open() returns 7

SEV=7 AUTH/12 RPT=8 15:24:04.860 08/27/2001 272  
Authentication session opened: handle = 7

SEV=8 AUTHDBG/3 RPT=8 15:24:04.860 08/27/2001 273  
(AUTH\_PutAttrTable(7, 61af64

SEV=8 AUTHDBG/6 RPT=3 15:24:04.860 08/27/2001 274  
(AUTH\_GroupAuthenticate(7, 7398828, 42dd5c

SEV=6 IKE/0 RPT=6 15:24:04.860 08/27/2001 275  
MM received unexpected event EV\_ACTIVATE\_NEW\_SA in state  
MM\_BLD\_MSG6

SEV=8 AUTHDBG/59 RPT=6 15:24:04.860 08/27/2001 276  
(AUTH\_BindServer(3ea0278, 0, 0

SEV=9 AUTHDBG/69 RPT=6 15:24:04.860 08/27/2001 277  
Auth Server e5d99c has been bound to ACB 3ea0278, sessions = 1

SEV=8 AUTHDBG/65 RPT=6 15:24:04.860 08/27/2001 278  
(AUTH\_CreateTimer(3ea0278, 0, 0

SEV=9 AUTHDBG/72 RPT=6 15:24:04.860 08/27/2001 279  
Reply timer created: handle = 2A0017

SEV=8 AUTHDBG/61 RPT=6 15:24:04.860 08/27/2001 280  
(AUTH\_BuildMsg(3ea0278, 0, 0

SEV=8 AUTHDBG/64 RPT=6 15:24:04.860 08/27/2001 281  
(AUTH\_StartTimer(3ea0278, 0, 0

SEV=9 AUTHDBG/73 RPT=6 15:24:04.860 08/27/2001 282  
,Reply timer started: handle = 2A0017, timestamp = 902538  
timeout = 30000

SEV=8 AUTHDBG/62 RPT=6 15:24:04.860 08/27/2001 283  
(AUTH\_SndRequest(3ea0278, 0, 0

SEV=8 AUTHDBG/50 RPT=11 15:24:04.860 08/27/2001 284  
(IntDB\_Decode(37fc5ac, 112

SEV=10 AUTHDECODE/12 RPT=26 15:24:04.860 08/27/2001 285  
IntDB: Type = 1 (0x01) User-Name

SEV=10 AUTHDECODE/13 RPT=26 15:24:04.860 08/27/2001 286  
(IntDB: Length = 8 (0x08

SEV=10 AUTHDECODE/14 RPT=15 15:24:04.860 08/27/2001 287  
= (IntDB: Value (String

**SEV=10 AUTHDECODE/0 RPT=15 15:24:04.860 08/27/2001 288**  
**63726C67 726F7570** **crlgroup :0000**

SEV=10 AUTHDECODE/12 RPT=27 15:24:04.860 08/27/2001 289  
IntDB: Type = 5 (0x05) NAS-Port

SEV=10 AUTHDECODE/13 RPT=27 15:24:04.860 08/27/2001 290  
(IntDB: Length = 4 (0x04

SEV=10 AUTHDECODE/15 RPT=12 15:24:04.860 08/27/2001 291  
(IntDB: Value (Integer) = 0 (0x0000

SEV=10 AUTHDECODE/12 RPT=28 15:24:04.860 08/27/2001 292  
IntDB: Type = 6 (0x06) Service-Type

SEV=10 AUTHDECODE/13 RPT=28 15:24:04.860 08/27/2001 293  
(IntDB: Length = 4 (0x04

SEV=10 AUTHDECODE/15 RPT=13 15:24:04.860 08/27/2001 294  
(IntDB: Value (Integer) = 2 (0x0002

SEV=10 AUTHDECODE/12 RPT=29 15:24:04.860 08/27/2001 295  
IntDB: Type = 7 (0x07) Framed-Protocol

SEV=10 AUTHDECODE/13 RPT=29 15:24:04.860 08/27/2001 296  
(IntDB: Length = 4 (0x04

SEV=10 AUTHDECODE/15 RPT=14 15:24:04.860 08/27/2001 297  
(IntDB: Value (Integer) = 1 (0x0001

SEV=10 AUTHDECODE/12 RPT=30 15:24:04.860 08/27/2001 298  
IntDB: Type = 66 (0x42) Tunnel-Client-Endpoint

SEV=10 AUTHDECODE/13 RPT=30 15:24:04.860 08/27/2001 299  
(IntDB: Length = 13 (0x0D

SEV=10 AUTHDECODE/14 RPT=16 15:24:04.860 08/27/2001 300  
= (IntDB: Value (String

SEV=10 AUTHDECODE/0 RPT=16 15:24:04.860 08/27/2001 301  
3137322E 31382E31 32342E39 36 172.18.124.96 :0000

SEV=10 AUTHDECODE/12 RPT=31 15:24:04.860 08/27/2001 302  
IntDB: Type = 4118 (0x1016) Authentication-Server-Type

SEV=10 AUTHDECODE/13 RPT=31 15:24:04.860 08/27/2001 303  
(IntDB: Length = 4 (0x04

SEV=10 AUTHDECODE/15 RPT=15 15:24:04.860 08/27/2001 304  
(IntDB: Value (Integer) = 5 (0x0005

SEV=8 AUTHDBG/47 RPT=11 15:24:04.860 08/27/2001 305  
(IntDB\_Xmt(3ea0278

SEV=9 AUTHDBG/71 RPT=6 15:24:04.860 08/27/2001 306  
xmit\_cnt = 1

SEV=8 AUTHDBG/47 RPT=12 15:24:04.860 08/27/2001 307  
(IntDB\_Xmt(3ea0278

SEV=8 AUTHDBG/49 RPT=6 15:24:04.960 08/27/2001 308  
(IntDB\_Match(3ea0278, 1ff6140)

SEV=8 AUTHDBG/63 RPT=6 15:24:04.960 08/27/2001 309  
(AUTH\_RcvReply(3ea0278, 0, 0)

SEV=8 AUTHDBG/50 RPT=12 15:24:04.960 08/27/2001 310  
(IntDB\_Decode(1ff6140, 42)

SEV=10 AUTHDECODE/12 RPT=32 15:24:04.960 08/27/2001 311  
IntDB: Type = 1 (0x01) User-Name

SEV=10 AUTHDECODE/13 RPT=32 15:24:04.960 08/27/2001 312  
(IntDB: Length = 8 (0x08)

SEV=10 AUTHDECODE/14 RPT=17 15:24:04.960 08/27/2001 313  
= (IntDB: Value (String

**SEV=10 AUTHDECODE/0 RPT=17 15:24:04.960 08/27/2001 314**  
**63726C67 726F7570** **crlgroup :0000**

SEV=8 AUTHDBG/48 RPT=6 15:24:04.960 08/27/2001 315  
(IntDB\_Rcv(3ea0278)

SEV=8 AUTHDBG/66 RPT=6 15:24:04.960 08/27/2001 316  
(AUTH\_DeleteTimer(3ea0278, 0, 0)

SEV=9 AUTHDBG/74 RPT=6 15:24:04.960 08/27/2001 317  
Reply timer stopped: handle = 2A0017, timestamp = 902548

SEV=8 AUTHDBG/58 RPT=6 15:24:04.960 08/27/2001 318  
(AUTH\_Callback(3ea0278, 0, 0)

SEV=6 AUTH/39 RPT=5 172.18.124.96 15:24:04.960 08/27/2001 319  
,Authentication successful: handle = 7, server = Internal  
group = crlgroup

SEV=7 IKEDBG/0 RPT=348 172.18.124.96 15:24:04.960 08/27/2001 320  
[Group [crlgroup  
(Found Phase 1 Group (crlgroup

SEV=8 AUTHDBG/4 RPT=4 15:24:04.960 08/27/2001 321  
(AUTH\_GetAttrTable(7, 61afac

SEV=7 IKEDBG/14 RPT=4 172.18.124.96 15:24:04.960 08/27/2001 322  
[Group [crlgroup  
Authentication configured for Internal

SEV=8 AUTHDBG/2 RPT=7 15:24:04.960 08/27/2001 323  
(AUTH\_Close(7

SEV=8 CERT/14 RPT=3 15:24:04.960 08/27/2001 324  
(CERT\_Authenticate(6, 7398828, 42722c

SEV=8 AUTHDBG/60 RPT=6 15:24:04.960 08/27/2001 325  
(AUTH\_UnbindServer(3ea0278, 0, 0)

SEV=9 AUTHDBG/70 RPT=6 15:24:04.960 08/27/2001 326  
,Auth Server e5d99c has been unbound from ACB 3ea0278  
sessions = 0

SEV=8 AUTHDBG/10 RPT=7 15:24:04.960 08/27/2001 327  
(AUTH\_Int\_FreeAuthCB(3ea0278

SEV=9 AUTHDBG/19 RPT=7 15:24:04.960 08/27/2001 328  
instance = 8, clone\_instance = 0

SEV=7 AUTH/13 RPT=7 15:24:04.960 08/27/2001 329  
Authentication session closed: handle = 7

SEV=7 CERT/5 RPT=3 15:24:04.960 08/27/2001 330  
Checking revocation status: session = 6

SEV=8 AUTHDBG/3 RPT=9 15:24:04.960 08/27/2001 331  
(AUTH\_PutAttrTable(6, f2f754

SEV=8 CERT/51 RPT=3 15:24:04.960 08/27/2001 332  
(CERT\_CheckCRLConfig(3eb7914, 0, 0

SEV=7 CERT/1 RPT=3 15:24:04.970 08/27/2001 333  
Certificate is valid: session = 6

SEV=8 CERT/55 RPT=2 15:24:04.980 08/27/2001 334  
(CERT\_CheckCache(3eb7914, 0, 0

SEV=8 CERT/53 RPT=2 15:24:04.980 08/27/2001 335  
(CERT\_OpenSession(3eb7914, 0, 0

SEV=8 AUTHDBG/1 RPT=9 15:24:04.980 08/27/2001 336  
AUTH\_Open() returns 8

SEV=7 AUTH/12 RPT=9 15:24:04.980 08/27/2001 337  
Authentication session opened: handle = 8

SEV=8 CERT/57 RPT=2 15:24:04.980 08/27/2001 338  
(CERT\_SndRequest(3eb7914, 0, 0

SEV=8 AUTHDBG/3 RPT=10 15:24:04.980 08/27/2001 339  
(AUTH\_PutAttrTable(8, f2f494

SEV=8 AUTHDBG/5 RPT=2 15:24:04.980 08/27/2001 340  
(AUTH\_Authenticate(8, 3eb7914, 47ed40

SEV=8 AUTHDBG/59 RPT=7 15:24:04.980 08/27/2001 341  
(AUTH\_BindServer(3ea0278, 0, 0

SEV=9 AUTHDBG/69 RPT=7 15:24:04.980 08/27/2001 342  
,Auth Server f162bc has been bound to ACB 3ea0278  
sessions = 1

SEV=8 AUTHDBG/65 RPT=7 15:24:04.980 08/27/2001 343  
(AUTH\_CreateTimer(3ea0278, 0, 0

SEV=9 AUTHDBG/72 RPT=7 15:24:04.980 08/27/2001 344  
Reply timer created: handle = 2B0017

SEV=8 AUTHDBG/61 RPT=7 15:24:04.980 08/27/2001 345  
(AUTH\_BuildMsg(3ea0278, 0, 0

SEV=8 AUTHDBG/100 RPT=1 15:24:04.980 08/27/2001 346  
(Ldap\_Build(3ea0278

SEV=8 AUTHDBG/122 RPT=1 15:24:04.980 08/27/2001 347  
Ldap connecting to host 172.18.124.96:389

SEV=8 AUTHDBG/123 RPT=1 15:24:04.980 08/27/2001 348  
Ldap socket 2 connected to host 172.18.124.96

```
SEV=8 AUTHDBG/107 RPT=1 15:24:04.980 08/27/2001 349
      Ldap directory server 172.18.124.96 is up

SEV=7 AUTHDBG/143 RPT=1 15:24:04.980 08/27/2001 350
      .Ldap Lookup - 16 bytes successfully received

SEV=8 AUTHDBG/106 RPT=1 15:24:04.980 08/27/2001 351
      (Ldap bind success(f162bc

SEV=8 AUTHDBG/64 RPT=7 15:24:04.980 08/27/2001 352
      (AUTH_StartTimer(3ea0278, 0, 0

SEV=9 AUTHDBG/73 RPT=7 15:24:04.980 08/27/2001 353
,Reply timer started: handle = 2B0017, timestamp = 902550
      timeout = 30000

SEV=8 AUTHDBG/62 RPT=7 15:24:04.980 08/27/2001 354
      (AUTH_SndRequest(3ea0278, 0, 0

SEV=8 AUTHDBG/101 RPT=1 15:24:04.980 08/27/2001 355
      (Ldap_Xmt(3ea0278

SEV=8 AUTHDBG/114 RPT=1 15:24:04.980 08/27/2001 356
      :Ldap search
      DN: CN=jazib-pc,CN=jazib-pc,CN=CDP,CN=Public
,Key Services,CN=Services,CN=Configuration,DC=rtp-vpn
      DC=cisco,DC=com
      Filter: objectclass=cRLDistributionPoint
      Scope: LDAP_SCOPE_BASE

SEV=9 AUTHDBG/71 RPT=7 15:24:04.980 08/27/2001 360
      xmit_cnt = 1

SEV=7 AUTHDBG/143 RPT=2 15:24:05.080 08/27/2001 361
      .Ldap Lookup - 497 bytes successfully received

SEV=7 AUTHDBG/143 RPT=3 15:24:05.180 08/27/2001 362
      .Ldap Lookup - 16 bytes successfully received

SEV=8 AUTHDBG/112 RPT=1 15:24:05.180 08/27/2001 363
      Ldap poll got final result

SEV=8 AUTHDBG/103 RPT=1 15:24:05.180 08/27/2001 364
Ldap_Match(3ea0278, 1fe8108), id = 0x02, rcvd = 0x02

SEV=8 AUTHDBG/63 RPT=7 15:24:05.180 08/27/2001 365
      (AUTH_RcvReply(3ea0278, 0, 0

SEV=8 AUTHDBG/102 RPT=1 15:24:05.180 08/27/2001 366
      (Ldap_Rcv(3ea0278

SEV=12 AUTHDBG/0 RPT=1 15:24:05.180 08/27/2001 367
      LDAP: Number of lists = 1, Rcv data length = 326
.*...3081ED02 0101300D 06092A86      0..B0.....0 30820142 :0000
.4886F70D 01010505 00308183 3120301E      H.....0..1 0 :0010
06092A86 4886F70D 01090116 116A6672      ..*..H.....jfr :0020
.6168696D 40636973 636F2E63 6F6D310B      ahim@cisco.com1 :0030
..0B300906      0...U....US1.0 02555331 55040613 30090603 :0040
.13024E43 310C300A 06035504      .U....NC1.0...U 03550408 :0050
...55040A13      ...RTP1.0...U 30140603 54503116 07130352 :0060

SEV=8 AUTHDBG/98 RPT=1 15:24:05.180 08/27/2001 375
      (LdapApiIntClose(3ea0278
```

SEV=8 AUTHDBG/66 RPT=7 15:24:05.180 08/27/2001 376  
(AUTH\_DeleteTimer(3ea0278, 0, 0)

SEV=9 AUTHDBG/74 RPT=7 15:24:05.180 08/27/2001 377  
Reply timer stopped: handle = 2B0017, timestamp = 902570

SEV=8 AUTHDBG/58 RPT=7 15:24:05.180 08/27/2001 378  
(AUTH\_Callback(3ea0278, 0, 0)

SEV=6 AUTH/4 RPT=2 15:24:05.180 08/27/2001 379  
,Authentication successful: handle = 8, server = crl\_server  
= user

SEV=8 AUTHDBG/4 RPT=5 15:24:05.180 08/27/2001 380  
(AUTH\_GetAttrTable(8, f395e0)

SEV=7 CERT/7 RPT=1 15:24:05.180 08/27/2001 381  
Retrieved revocation list: session = 6

SEV=8 AUTHDBG/60 RPT=7 15:24:05.180 08/27/2001 382  
(AUTH\_UnbindServer(3ea0278, 0, 0)

SEV=9 AUTHDBG/70 RPT=7 15:24:05.180 08/27/2001 383  
,Auth Server f162bc has been unbound from ACB 3ea0278  
sessions = 0

SEV=8 CERT/58 RPT=1 15:24:05.180 08/27/2001 384  
(CERT\_RcvReply(3eb7914, 0, 0)

SEV=8 CERT/54 RPT=2 15:24:05.180 08/27/2001 385  
(CERT\_CloseSession(3eb7914, 0, 0)

SEV=8 AUTHDBG/2 RPT=8 15:24:05.180 08/27/2001 386  
(AUTH\_Close(8

SEV=8 CERT/52 RPT=1 15:24:05.180 08/27/2001 387  
(CERT\_CheckCRL(3eb7914, 0, 0)

SEV=8 AUTHDBG/10 RPT=8 15:24:05.180 08/27/2001 388  
(AUTH\_Int\_FreeAuthCB(3ea0278

SEV=9 AUTHDBG/19 RPT=8 15:24:05.180 08/27/2001 389  
instance = 9, clone\_instance = 0

SEV=7 AUTH/13 RPT=8 15:24:05.180 08/27/2001 390  
Authentication session closed: handle = 8

SEV=7 CERT/2 RPT=1 15:24:05.180 08/27/2001 391  
Certificate has not been revoked: session = 6

SEV=8 CERT/56 RPT=3 15:24:05.180 08/27/2001 392  
(CERT\_Callback(3eb7914, 0, 0)

SEV=5 IKE/79 RPT=2 172.18.124.96 15:24:05.180 08/27/2001 393  
[Group [crlgroup  
Validation of certificate successful  
(CN=user1, SN=61A1D542000000000009)

SEV=7 IKEDBG/0 RPT=349 172.18.124.96 15:24:05.180 08/27/2001 395  
[Group [crlgroup  
(peer ID type 9 received (DER\_ASN1\_DN

SEV=9 IKEDBG/1 RPT=45 172.18.124.96 15:24:05.190 08/27/2001 396  
[Group [crlgroup



```

constructing ID
SEV=9 IKEDBG/0 RPT=350 172.18.124.96 15:24:05.190 08/27/2001 397
      [Group [crlgroup
      constructing cert payload
SEV=9 IKEDBG/1 RPT=46 172.18.124.96 15:24:05.190 08/27/2001 398
      [Group [crlgroup
      constructing RSA signature
SEV=9 IKEDBG/0 RPT=351 172.18.124.96 15:24:05.190 08/27/2001 399
      [Group [crlgroup
      computing hash
SEV=9 IKEDBG/46 RPT=11 172.18.124.96 15:24:05.200 08/27/2001 400
      [ Group [ crlgroup
      constructing dpd vid payload
SEV=8 IKEDBG/0 RPT=352 172.18.124.96 15:24:05.200 08/27/2001 401
      : SENDING Message (msgid=0) with payloads
      HDR + ID (5) ... total length : 1504
SEV=9 IKEDBG/0 RPT=353 172.18.124.96 15:24:05.200 08/27/2001 402
      [Group [crlgroup
      constructing blank hash
SEV=9 IKEDBG/0 RPT=354 172.18.124.96 15:24:05.200 08/27/2001 403
      [Group [crlgroup
      constructing qm hash
SEV=8 IKEDBG/0 RPT=355 172.18.124.96 15:24:05.200 08/27/2001 404
      : SENDING Message (msgid=feb4acac) with payloads
      HDR + HASH (8) ... total length : 100
SEV=8 IKEDBG/0 RPT=356 172.18.124.96 15:24:09.460 08/27/2001 406
      : RECEIVED Message (msgid=feb4acac) with payloads
      HDR + HASH (8) + ATTR (14) + NONE (0) ... total length : 85
SEV=9 IKEDBG/1 RPT=47 15:24:09.460 08/27/2001 408
      !process_attr(): Enter
SEV=9 IKEDBG/1 RPT=48 15:24:09.460 08/27/2001 409
      .Processing cfg reply attributes
SEV=8 AUTHDBG/1 RPT=10 15:24:09.460 08/27/2001 410
      AUTH_Open() returns 9
SEV=7 AUTH/12 RPT=10 15:24:09.460 08/27/2001 411
      Authentication session opened: handle = 9
SEV=8 AUTHDBG/3 RPT=11 15:24:09.460 08/27/2001 412
      (AUTH_PutAttrTable(9, 61af64
SEV=8 AUTHDBG/5 RPT=3 15:24:09.460 08/27/2001 413
      (AUTH_Authenticate(9, 2f1b9a0, 45d68c
SEV=8 AUTHDBG/59 RPT=8 15:24:09.460 08/27/2001 414
      (AUTH_BindServer(3eb81a4, 0, 0
SEV=9 AUTHDBG/69 RPT=8 15:24:09.460 08/27/2001 415
      ,Auth Server e5d99c has been bound to ACB 3eb81a4
      sessions = 1
SEV=8 AUTHDBG/65 RPT=8 15:24:09.460 08/27/2001 416
```

```
(AUTH_CreateTimer(3eb81a4, 0, 0

SEV=9 AUTHDBG/72 RPT=8 15:24:09.460 08/27/2001 417
      Reply timer created: handle = 2D0017

SEV=8 AUTHDBG/61 RPT=8 15:24:09.460 08/27/2001 418
      (AUTH_BuildMsg(3eb81a4, 0, 0

SEV=8 AUTHDBG/64 RPT=8 15:24:09.460 08/27/2001 419
      (AUTH_StartTimer(3eb81a4, 0, 0

SEV=9 AUTHDBG/73 RPT=8 15:24:09.460 08/27/2001 420
,Reply timer started: handle = 2D0017, timestamp = 902998
      timeout = 30000

SEV=8 AUTHDBG/62 RPT=8 15:24:09.460 08/27/2001 421
      (AUTH_SndRequest(3eb81a4, 0, 0

SEV=8 AUTHDBG/50 RPT=13 15:24:09.460 08/27/2001 422
      (IntDB_Decode(37f8938, 101

SEV=10 AUTHDECODE/12 RPT=33 15:24:09.460 08/27/2001 423
      IntDB: Type = 1 (0x01) User-Name

SEV=10 AUTHDECODE/13 RPT=33 15:24:09.460 08/27/2001 424
      (IntDB: Length = 9 (0x09

SEV=10 AUTHDECODE/14 RPT=18 15:24:09.460 08/27/2001 425
      = (IntDB: Value (String

SEV=10 AUTHDECODE/0 RPT=18 15:24:09.460 08/27/2001 426
ipsecuser      72 63757365 69707365 :0000

SEV=10 AUTHDECODE/12 RPT=34 15:24:09.460 08/27/2001 427
      IntDB: Type = 5 (0x05) NAS-Port

SEV=10 AUTHDECODE/13 RPT=34 15:24:09.460 08/27/2001 428
      (IntDB: Length = 4 (0x04

SEV=10 AUTHDECODE/15 RPT=16 15:24:09.460 08/27/2001 429
      (IntDB: Value (Integer) = 1003 (0x03EB

SEV=10 AUTHDECODE/12 RPT=35 15:24:09.460 08/27/2001 430
      IntDB: Type = 6 (0x06) Service-Type

SEV=10 AUTHDECODE/13 RPT=35 15:24:09.460 08/27/2001 431
      (IntDB: Length = 4 (0x04

SEV=10 AUTHDECODE/15 RPT=17 15:24:09.460 08/27/2001 432
      (IntDB: Value (Integer) = 2 (0x0002

SEV=10 AUTHDECODE/12 RPT=36 15:24:09.460 08/27/2001 433
      IntDB: Type = 7 (0x07) Framed-Protocol

SEV=10 AUTHDECODE/13 RPT=36 15:24:09.460 08/27/2001 434
      (IntDB: Length = 4 (0x04

SEV=10 AUTHDECODE/15 RPT=18 15:24:09.460 08/27/2001 435
      (IntDB: Value (Integer) = 1 (0x0001

SEV=10 AUTHDECODE/12 RPT=37 15:24:09.460 08/27/2001 436
      IntDB: Type = 66 (0x42) Tunnel-Client-Endpoint

SEV=10 AUTHDECODE/13 RPT=37 15:24:09.460 08/27/2001 437
```

```
(IntDB: Length = 13 (0x0D)

SEV=10 AUTHDECODE/14 RPT=19 15:24:09.460 08/27/2001 438
      = (IntDB: Value (String

SEV=10 AUTHDECODE/0 RPT=19 15:24:09.460 08/27/2001 439
3137322E 31382E31 32342E39 36          172.18.124.96 :0000

SEV=8 AUTHDBG/47 RPT=13 15:24:09.460 08/27/2001 440
      (IntDB_Xmt(3eb81a4

SEV=9 AUTHDBG/71 RPT=8 15:24:09.460 08/27/2001 441
      xmit_cnt = 1

SEV=8 AUTHDBG/47 RPT=14 15:24:09.460 08/27/2001 442
      (IntDB_Xmt(3eb81a4

SEV=8 AUTHDBG/49 RPT=7 15:24:09.560 08/27/2001 443
      (IntDB_Match(3eb81a4, 2001040

SEV=8 AUTHDBG/63 RPT=8 15:24:09.560 08/27/2001 444
      (AUTH_RcvReply(3eb81a4, 0, 0

SEV=8 AUTHDBG/50 RPT=14 15:24:09.560 08/27/2001 445
      (IntDB_Decode(2001040, 60

SEV=10 AUTHDECODE/12 RPT=38 15:24:09.560 08/27/2001 446
      IntDB: Type = 1 (0x01) User-Name

SEV=10 AUTHDECODE/13 RPT=38 15:24:09.560 08/27/2001 447
      (IntDB: Length = 9 (0x09

SEV=10 AUTHDECODE/14 RPT=20 15:24:09.560 08/27/2001 448
      = (IntDB: Value (String

SEV=10 AUTHDECODE/0 RPT=20 15:24:09.560 08/27/2001 449
ipsecuser          72 63757365 69707365 :0000

SEV=10 AUTHDECODE/12 RPT=39 15:24:09.560 08/27/2001 450
      IntDB: Type = 25 (0x19) Class

SEV=10 AUTHDECODE/13 RPT=39 15:24:09.560 08/27/2001 451
      (IntDB: Length = 8 (0x08

SEV=10 AUTHDECODE/14 RPT=21 15:24:09.560 08/27/2001 452
      = (IntDB: Value (String

SEV=10 AUTHDECODE/0 RPT=21 15:24:09.560 08/27/2001 453
63726C67 726F7570          crlgroup :0000

SEV=8 AUTHDBG/48 RPT=7 15:24:09.560 08/27/2001 454
      (IntDB_Rcv(3eb81a4

SEV=8 AUTHDBG/66 RPT=8 15:24:09.560 08/27/2001 455
      (AUTH_DeleteTimer(3eb81a4, 0, 0

SEV=9 AUTHDBG/74 RPT=8 15:24:09.560 08/27/2001 456
Reply timer stopped: handle = 2D0017, timestamp = 903008

SEV=8 AUTHDBG/58 RPT=8 15:24:09.560 08/27/2001 457
      (AUTH_Callback(3eb81a4, 0, 0

SEV=6 AUTH/4 RPT=3 172.18.124.96 15:24:09.560 08/27/2001 458
      ,Authentication successful: handle = 9, server = Internal
```

user = ipsecuser

SEV=8 AUTHDBG/3 RPT=12 15:24:09.560 08/27/2001 459  
(AUTH\_PutAttrTable(9, f39688

SEV=8 AUTHDBG/60 RPT=8 15:24:09.560 08/27/2001 460  
(AUTH\_UnbindServer(3eb81a4, 0, 0

SEV=9 AUTHDBG/70 RPT=8 15:24:09.560 08/27/2001 461  
,Auth Server e5d99c has been unbound from ACB 3eb81a4  
sessions = 0

SEV=8 AUTHDBG/59 RPT=9 15:24:09.560 08/27/2001 462  
(AUTH\_BindServer(3eb81a4, 0, 0

SEV=9 AUTHDBG/69 RPT=9 15:24:09.560 08/27/2001 463  
,Auth Server e5d99c has been bound to ACB 3eb81a4  
sessions = 1

SEV=8 AUTHDBG/65 RPT=9 15:24:09.560 08/27/2001 464  
(AUTH\_CreateTimer(3eb81a4, 0, 0

SEV=9 AUTHDBG/72 RPT=9 15:24:09.560 08/27/2001 465  
Reply timer created: handle = 2E0017

SEV=8 AUTHDBG/61 RPT=9 15:24:09.560 08/27/2001 466  
(AUTH\_BuildMsg(3eb81a4, 0, 0

SEV=8 AUTHDBG/64 RPT=9 15:24:09.560 08/27/2001 467  
(AUTH\_StartTimer(3eb81a4, 0, 0

SEV=9 AUTHDBG/73 RPT=9 15:24:09.560 08/27/2001 468  
,Reply timer started: handle = 2E0017, timestamp = 903008  
timeout = 30000

SEV=8 AUTHDBG/62 RPT=9 15:24:09.560 08/27/2001 469  
(AUTH\_SndRequest(3eb81a4, 0, 0

SEV=8 AUTHDBG/50 RPT=15 15:24:09.560 08/27/2001 470  
(IntDB\_Decode(2000eb0, 42

SEV=10 AUTHDECODE/12 RPT=40 15:24:09.560 08/27/2001 471  
IntDB: Type = 1 (0x01) User-Name

SEV=10 AUTHDECODE/13 RPT=40 15:24:09.560 08/27/2001 472  
(IntDB: Length = 8 (0x08

SEV=10 AUTHDECODE/14 RPT=22 15:24:09.560 08/27/2001 473  
= (IntDB: Value (String

SEV=10 AUTHDECODE/0 RPT=22 15:24:09.560 08/27/2001 474  
63726C67 726F7570 crlgroup :0000

SEV=8 AUTHDBG/47 RPT=15 15:24:09.560 08/27/2001 475  
(IntDB\_Xmt(3eb81a4

SEV=9 AUTHDBG/71 RPT=9 15:24:09.560 08/27/2001 476  
xmit\_cnt = 1

SEV=8 AUTHDBG/47 RPT=16 15:24:09.560 08/27/2001 477  
(IntDB\_Xmt(3eb81a4

SEV=8 AUTHDBG/49 RPT=8 15:24:09.660 08/27/2001 478  
(IntDB\_Match(3eb81a4, 20014f0

SEV=8 AUTHDBG/63 RPT=9 15:24:09.660 08/27/2001 479  
(AUTH\_RcvReply(3eb81a4, 0, 0)

SEV=8 AUTHDBG/50 RPT=16 15:24:09.660 08/27/2001 480  
(IntDB\_Decode(20014f0, 42)

SEV=10 AUTHDECODE/12 RPT=41 15:24:09.660 08/27/2001 481  
IntDB: Type = 1 (0x01) User-Name

SEV=10 AUTHDECODE/13 RPT=41 15:24:09.660 08/27/2001 482  
(IntDB: Length = 8 (0x08)

SEV=10 AUTHDECODE/14 RPT=23 15:24:09.660 08/27/2001 483  
= (IntDB: Value (String

**SEV=10 AUTHDECODE/0 RPT=23 15:24:09.660 08/27/2001 484**  
**63726C67 726F7570** **crlgroup :0000**

SEV=8 AUTHDBG/48 RPT=8 15:24:09.660 08/27/2001 485  
(IntDB\_Rcv(3eb81a4

SEV=8 AUTHDBG/66 RPT=9 15:24:09.660 08/27/2001 486  
(AUTH\_DeleteTimer(3eb81a4, 0, 0

SEV=9 AUTHDBG/74 RPT=9 15:24:09.660 08/27/2001 487  
Reply timer stopped: handle = 2E0017, timestamp = 903018

SEV=8 AUTHDBG/58 RPT=9 15:24:09.660 08/27/2001 488  
(AUTH\_Callback(3eb81a4, 0, 0

**SEV=6 AUTH/39 RPT=6 172.18.124.96 15:24:09.660 08/27/2001 489**  
**,Authentication successful: handle = 9, server = Internal**  
**group = crlgroup**

SEV=8 AUTHDBG/3 RPT=13 15:24:09.660 08/27/2001 490  
(AUTH\_PutAttrTable(9, f39688

SEV=8 AUTHDBG/60 RPT=9 15:24:09.660 08/27/2001 491  
(AUTH\_UnbindServer(3eb81a4, 0, 0

SEV=9 AUTHDBG/70 RPT=9 15:24:09.660 08/27/2001 492  
,Auth Server e5d99c has been unbound from ACB 3eb81a4  
sessions = 0

SEV=8 AUTHDBG/59 RPT=10 15:24:09.660 08/27/2001 493  
(AUTH\_BindServer(3eb81a4, 0, 0

SEV=9 AUTHDBG/69 RPT=10 15:24:09.660 08/27/2001 494  
,Auth Server e5d99c has been bound to ACB 3eb81a4  
sessions = 1

SEV=8 AUTHDBG/65 RPT=10 15:24:09.660 08/27/2001 495  
(AUTH\_CreateTimer(3eb81a4, 0, 0

SEV=9 AUTHDBG/72 RPT=10 15:24:09.660 08/27/2001 496  
Reply timer created: handle = 2F0017

SEV=8 AUTHDBG/61 RPT=10 15:24:09.660 08/27/2001 497  
(AUTH\_BuildMsg(3eb81a4, 0, 0

SEV=8 AUTHDBG/64 RPT=10 15:24:09.660 08/27/2001 498  
(AUTH\_StartTimer(3eb81a4, 0, 0



SEV=6 AUTH/39 RPT=7 172.18.124.96 15:24:09.760 08/27/2001 520  
 ,Authentication successful: handle = 9, server = Internal  
 group = crlgroup

SEV=8 AUTHDBG/4 RPT=6 15:24:09.760 08/27/2001 521  
 (AUTH\_GetAttrTable(9, 61afac

SEV=7 IKEDBG/14 RPT=5 172.18.124.96 15:24:09.760 08/27/2001 522  
 [Group [crlgroup] User [ipsecuser  
 Authentication configured for Internal

SEV=8 AUTHDBG/2 RPT=9 15:24:09.760 08/27/2001 523  
 (AUTH\_Close(9

SEV=4 IKE/52 RPT=2 172.18.124.96 15:24:09.760 08/27/2001 524  
 [Group [crlgroup] User [ipsecuser  
 .User (ipsecuser) authenticated

SEV=9 IKEDBG/0 RPT=357 172.18.124.96 15:24:09.760 08/27/2001 525  
 [Group [crlgroup] User [ipsecuser  
 constructing blank hash

SEV=9 IKEDBG/0 RPT=358 172.18.124.96 15:24:09.760 08/27/2001 526  
 [Group [crlgroup] User [ipsecuser  
 constructing qm hash

SEV=8 IKEDBG/0 RPT=359 172.18.124.96 15:24:09.760 08/27/2001 527  
 : SENDING Message (msgid=bf771120) with payloads  
 HDR + HASH (8) ... total length : 60

SEV=8 AUTHDBG/60 RPT=10 15:24:09.760 08/27/2001 529  
 (AUTH\_UnbindServer(3eb81a4, 0, 0

SEV=9 AUTHDBG/70 RPT=10 15:24:09.760 08/27/2001 530  
 Auth Server e5d99c has been unbound from ACB 3eb81a4, sessions = 0

SEV=8 AUTHDBG/10 RPT=9 15:24:09.760 08/27/2001 531  
 (AUTH\_Int\_FreeAuthCB(3eb81a4

SEV=9 AUTHDBG/19 RPT=9 15:24:09.760 08/27/2001 532  
 instance = 10, clone\_instance = 0

SEV=7 AUTH/13 RPT=9 15:24:09.760 08/27/2001 533  
 Authentication session closed: handle = 9

SEV=8 IKEDBG/0 RPT=360 172.18.124.96 15:24:09.770 08/27/2001 534  
 : RECEIVED Message (msgid=bf771120) with payloads  
 HDR + HASH (8) + ATTR (14) + NONE (0) ... total length : 56

SEV=9 IKEDBG/1 RPT=49 15:24:09.770 08/27/2001 536  
 !process\_attr(): Enter

SEV=9 IKEDBG/1 RPT=50 15:24:09.770 08/27/2001 537  
 Processing cfg ACK attributes

SEV=8 IKEDBG/0 RPT=361 172.18.124.96 15:24:09.770 08/27/2001 538  
 : RECEIVED Message (msgid=826be32d) with payloads  
 HDR + HASH (8) + ATTR (14) + NONE (0) ... total length : 142

SEV=9 IKEDBG/1 RPT=51 15:24:09.770 08/27/2001 540  
 !process\_attr(): Enter

SEV=9 IKEDBG/1 RPT=52 15:24:09.770 08/27/2001 541  
 Processing cfg Request attributes

SEV=9 IKEDBG/1 RPT=53 15:24:09.770 08/27/2001 542  
!Received IPV4 address request

SEV=9 IKEDBG/1 RPT=54 15:24:09.770 08/27/2001 543  
!Received IPV4 net mask request

SEV=9 IKEDBG/1 RPT=55 15:24:09.770 08/27/2001 544  
!Received DNS server address request

SEV=9 IKEDBG/1 RPT=56 15:24:09.770 08/27/2001 545  
!Received WINS server address request

SEV=6 IKE/130 RPT=3 172.18.124.96 15:24:09.770 08/27/2001 546  
[Group [crlgroup] User [ipsecuser  
Received unsupported transaction mode attribute: 5

SEV=6 IKE/130 RPT=4 172.18.124.96 15:24:09.770 08/27/2001 548  
[Group [crlgroup] User [ipsecuser  
Received unsupported transaction mode attribute: 7

SEV=9 IKEDBG/1 RPT=57 15:24:09.770 08/27/2001 550  
!Received Banner request

SEV=9 IKEDBG/1 RPT=58 15:24:09.770 08/27/2001 551  
!Received Save PW request

SEV=9 IKEDBG/1 RPT=59 15:24:09.770 08/27/2001 552  
!Received Default Domain request

SEV=9 IKEDBG/1 RPT=60 15:24:09.770 08/27/2001 553  
!Received Split Tunnel Include request

SEV=9 IKEDBG/1 RPT=61 15:24:09.770 08/27/2001 554  
!Received PFS request

SEV=4 IKE/131 RPT=2 172.18.124.96 15:24:09.770 08/27/2001 555  
[Group [crlgroup] User [ipsecuser  
Received unknown transaction mode attribute: 28680

SEV=9 IKEDBG/1 RPT=62 15:24:09.770 08/27/2001 557  
!Received UDP Port request

SEV=9 IKEDBG/31 RPT=2 172.18.124.96 15:24:09.770 08/27/2001 558  
[Group [crlgroup] User [ipsecuser  
Obtained IP addr (10.10.10.1) prior to initiating Mode Cfg  
(XAuth enabled)

SEV=9 IKEDBG/0 RPT=362 172.18.124.96 15:24:09.770 08/27/2001 560  
[Group [crlgroup] User [ipsecuser  
constructing blank hash

SEV=9 IKEDBG/0 RPT=363 172.18.124.96 15:24:09.770 08/27/2001 561  
..... 0A0A0A01 F0010000 F0070000 00010004 :0000

SEV=9 IKEDBG/0 RPT=364 172.18.124.96 15:24:09.770 08/27/2001 562  
[Group [crlgroup] User [ipsecuser  
constructing qm hash

SEV=8 IKEDBG/0 RPT=365 172.18.124.96 15:24:09.770 08/27/2001 563  
: SENDING Message (msgid=826be32d) with payloads  
HDR + HASH (8) ... total length : 72

SEV=9 IKEDBG/21 RPT=2 172.18.124.96 15:24:09.810 08/27/2001 565



[Group [crlgroup] User [ipsecuser  
Delay Quick Mode processing, Cert/Trans Exch/RM DSID in progress

SEV=7 IKEDBG/22 RPT=2 172.18.124.96 15:24:09.810 08/27/2001 567  
[Group [crlgroup] User [ipsecuser  
Resume Quick Mode processing, Cert/Trans Exch/RM DSID completed

SEV=4 IKE/119 RPT=2 172.18.124.96 15:24:09.810 08/27/2001 569  
[Group [crlgroup] User [ipsecuser  
PHASE 1 COMPLETED

SEV=6 IKE/121 RPT=2 172.18.124.96 15:24:09.810 08/27/2001 570  
Keep-alive type for this connection: DPD

SEV=7 IKEDBG/0 RPT=366 172.18.124.96 15:24:09.810 08/27/2001 571  
[Group [crlgroup] User [ipsecuser  
(Starting phase 1 rekey timer: 82080000 (ms

SEV=4 AUTH/21 RPT=6 15:24:09.810 08/27/2001 572  
User ipsecuser connected

SEV=9 IKEDBG/0 RPT=367 172.18.124.96 15:24:09.810 08/27/2001 573  
[Group [crlgroup] User [ipsecuser  
sending notify message

SEV=9 IKEDBG/0 RPT=368 172.18.124.96 15:24:09.810 08/27/2001 574  
[Group [crlgroup] User [ipsecuser  
constructing blank hash

SEV=9 IKEDBG/0 RPT=369 172.18.124.96 15:24:09.810 08/27/2001 575  
[Group [crlgroup] User [ipsecuser  
constructing qm hash

SEV=8 IKEDBG/0 RPT=370 172.18.124.96 15:24:09.810 08/27/2001 576  
: SENDING Message (msgid=b6a9bf96) with payloads  
HDR + HASH (8) ... total length : 88

SEV=8 IKEDBG/0 RPT=371 172.18.124.96 15:24:09.810 08/27/2001 578  
: RECEIVED Message (msgid=67342bd4) with payloads  
(HDR + HASH (8) + SA (1) + NONCE (10) + ID (5) + ID (5) + NONE (0  
total length : 792 ...

SEV=9 IKEDBG/0 RPT=372 172.18.124.96 15:24:09.810 08/27/2001 581  
[Group [crlgroup] User [ipsecuser  
processing hash

SEV=9 IKEDBG/0 RPT=373 172.18.124.96 15:24:09.810 08/27/2001 582  
[Group [crlgroup] User [ipsecuser  
processing SA payload

SEV=9 IKEDBG/1 RPT=63 172.18.124.96 15:24:09.810 08/27/2001 583  
[Group [crlgroup] User [ipsecuser  
processing nonce payload

SEV=9 IKEDBG/1 RPT=64 172.18.124.96 15:24:09.810 08/27/2001 584  
[Group [crlgroup] User [ipsecuser  
Processing ID

SEV=5 IKE/25 RPT=3 172.18.124.96 15:24:09.810 08/27/2001 585  
[Group [crlgroup] User [ipsecuser  
:Received remote Proxy Host data in ID Payload  
Address 10.10.10.1, Protocol 0, Port 0

SEV=9 IKEDBG/1 RPT=65 172.18.124.96 15:24:09.810 08/27/2001 588

[Group [crlgroup] User [ipsecuser  
Processing ID

SEV=5 IKE/24 RPT=2 172.18.124.96 15:24:09.810 08/27/2001 589  
[Group [crlgroup] User [ipsecuser  
:Received local Proxy Host data in ID Payload  
Address 172.18.124.132, Protocol 0, Port 0

SEV=8 IKEDBG/0 RPT=374 15:24:09.810 08/27/2001 592  
QM IsRekeyed old sa not found by addr

SEV=5 IKE/66 RPT=3 172.18.124.96 15:24:09.810 08/27/2001 593  
[Group [crlgroup] User [ipsecuser  
IKE Remote Peer configured for SA: ESP-3DES-MD5

SEV=9 IKEDBG/0 RPT=375 172.18.124.96 15:24:09.810 08/27/2001 595  
[Group [crlgroup] User [ipsecuser  
processing IPSEC SA

SEV=8 IKEDBG/0 RPT=376 15:24:09.810 08/27/2001 596  
Proposal # 2, Transform # 1, Type ESP, Id Triple-DES  
:Parsing received transform  
:Phase 2 failure  
:Mismatched attr types for class HMAC Algorithm  
Rcv'd: SHA  
Cfg'd: MD5

SEV=7 IKEDBG/27 RPT=3 172.18.124.96 15:24:09.810 08/27/2001 600  
[Group [crlgroup] User [ipsecuser  
IPSec SA Proposal # 3, Transform # 1 acceptable

SEV=7 IKEDBG/0 RPT=377 172.18.124.96 15:24:09.810 08/27/2001 602  
[Group [crlgroup] User [ipsecuser  
!IKE: requesting SPI

SEV=9 IPSECDBG/6 RPT=11 15:24:09.810 08/27/2001 603  
,IPSEC key message parse - msgtype 6, len 192, vers 1, pid 00000000  
,seq 3, err 0, type 2, mode 0, state 32, label 0, pad 0, spi 00000000  
,encrKeyLen 0, hashKeyLen 0, ivlen 0, alg 0, hmacAlg 0, lifetype 0  
lifetime1 7631924, lifetime2 0, dsId 300

SEV=9 IPSECDBG/1 RPT=37 15:24:09.810 08/27/2001 607  
!Processing KEY\_GETSPI msg

SEV=7 IPSECDBG/13 RPT=3 15:24:09.810 08/27/2001 608  
Reserved SPI 52918993

SEV=8 IKEDBG/6 RPT=3 15:24:09.810 08/27/2001 609  
IKE got SPI from key engine: SPI = 0x03277ad1

SEV=9 IKEDBG/0 RPT=378 172.18.124.96 15:24:09.810 08/27/2001 610  
[Group [crlgroup] User [ipsecuser  
oakley constucting quick mode

SEV=9 IKEDBG/0 RPT=379 172.18.124.96 15:24:09.810 08/27/2001 611  
[Group [crlgroup] User [ipsecuser  
constructing blank hash

SEV=9 IKEDBG/0 RPT=380 172.18.124.96 15:24:09.810 08/27/2001 612  
[Group [crlgroup] User [ipsecuser  
constructing ISA\_SA for ipsec

SEV=5 IKE/75 RPT=3 172.18.124.96 15:24:09.810 08/27/2001 613  
[Group [crlgroup] User [ipsecuser

Overriding Initiator's IPSec rekeying duration from 2147483 to  
seconds 28800

SEV=9 IKEDBG/1 RPT=66 172.18.124.96 15:24:09.810 08/27/2001 615  
[Group [crlgroup] User [ipsecuser  
constructing ipsec nonce payload

SEV=9 IKEDBG/1 RPT=67 172.18.124.96 15:24:09.810 08/27/2001 616  
[Group [crlgroup] User [ipsecuser  
constructing proxy ID

SEV=7 IKEDBG/0 RPT=381 172.18.124.96 15:24:09.810 08/27/2001 617  
[Group [crlgroup] User [ipsecuser  
:Transmitting Proxy Id  
Remote host: 10.10.10.1 Protocol 0 Port 0  
Local host: 172.18.124.132 Protocol 0 Port 0

SEV=7 IKEDBG/0 RPT=382 172.18.124.96 15:24:09.810 08/27/2001 621  
[Group [crlgroup] User [ipsecuser  
Sending RESPONDER LIFETIME notification to Initiator

SEV=9 IKEDBG/0 RPT=383 172.18.124.96 15:24:09.810 08/27/2001 623  
[Group [crlgroup] User [ipsecuser  
constructing qm hash

SEV=8 IKEDBG/0 RPT=384 172.18.124.96 15:24:09.820 08/27/2001 624  
: SENDING Message (msgid=67342bd4) with payloads  
HDR + HASH (8) ... total length : 172

SEV=8 IKEDBG/0 RPT=385 172.18.124.96 15:24:09.820 08/27/2001 626  
: RECEIVED Message (msgid=7102b770) with payloads  
(HDR + HASH (8) + SA (1) + NONCE (10) + ID (5) + ID (5) + NONE (0  
total length : 796 ...

SEV=9 IKEDBG/0 RPT=386 172.18.124.96 15:24:09.820 08/27/2001 629  
[Group [crlgroup] User [ipsecuser  
processing hash

SEV=9 IKEDBG/0 RPT=387 172.18.124.96 15:24:09.820 08/27/2001 630  
[Group [crlgroup] User [ipsecuser  
processing SA payload

SEV=9 IKEDBG/1 RPT=68 172.18.124.96 15:24:09.820 08/27/2001 631  
[Group [crlgroup] User [ipsecuser  
processing nonce payload

SEV=9 IKEDBG/1 RPT=69 172.18.124.96 15:24:09.820 08/27/2001 632  
[Group [crlgroup] User [ipsecuser  
Processing ID

SEV=5 IKE/25 RPT=4 172.18.124.96 15:24:09.820 08/27/2001 633  
[Group [crlgroup] User [ipsecuser  
:Received remote Proxy Host data in ID Payload  
Address 10.10.10.1, Protocol 0, Port 0

SEV=9 IKEDBG/1 RPT=70 172.18.124.96 15:24:09.820 08/27/2001 636  
[Group [crlgroup] User [ipsecuser  
Processing ID

SEV=5 IKE/34 RPT=2 172.18.124.96 15:24:09.820 08/27/2001 637  
[Group [crlgroup] User [ipsecuser  
:Received local IP Proxy Subnet data in ID Payload  
Address 0.0.0.0, Mask 0.0.0.0, Protocol 0, Port 0

SEV=8 IKEDBG/0 RPT=388 15:24:09.820 08/27/2001 640  
QM IsRekeyed old sa not found by addr

SEV=5 IKE/66 RPT=4 172.18.124.96 15:24:09.820 08/27/2001 641  
[Group [crlgroup] User [ipsecuser  
IKE Remote Peer configured for SA: ESP-3DES-MD5

SEV=9 IKEDBG/0 RPT=389 172.18.124.96 15:24:09.820 08/27/2001 643  
[Group [crlgroup] User [ipsecuser  
processing IPSEC SA

SEV=8 IKEDBG/0 RPT=390 15:24:09.820 08/27/2001 644  
Proposal # 2, Transform # 1, Type ESP, Id Triple-DES  
:Parsing received transform  
:Phase 2 failure  
:Mismatched attr types for class HMAC Algorithm  
Rcv'd: SHA  
Cfg'd: MD5

SEV=7 IKEDBG/27 RPT=4 172.18.124.96 15:24:09.820 08/27/2001 648  
[Group [crlgroup] User [ipsecuser  
IPSec SA Proposal # 3, Transform # 1 acceptable

SEV=7 IKEDBG/0 RPT=391 172.18.124.96 15:24:09.820 08/27/2001 650  
[Group [crlgroup] User [ipsecuser  
!IKE: requesting SPI

SEV=9 IPSECDBG/6 RPT=12 15:24:09.820 08/27/2001 651  
,IPSEC key message parse - msgtype 6, len 192, vers 1, pid 00000000  
,seq 4, err 0, type 2, mode 0, state 32, label 0, pad 0, spi 00000000  
,encrKeyLen 0, hashKeyLen 0, ivlen 0, alg 0, hmacAlg 0, lifetype 0  
lifetime1 7633504, lifetime2 0, dsId 300

SEV=9 IPSECDBG/1 RPT=38 15:24:09.830 08/27/2001 655  
!Processing KEY\_GETSPI msg

SEV=7 IPSECDBG/13 RPT=4 15:24:09.830 08/27/2001 656  
Reserved SPI 1672252832

SEV=8 IKEDBG/6 RPT=4 15:24:09.830 08/27/2001 657  
IKE got SPI from key engine: SPI = 0x63ac8da0

SEV=9 IKEDBG/0 RPT=392 172.18.124.96 15:24:09.830 08/27/2001 658  
[Group [crlgroup] User [ipsecuser  
oakley constructing quick mode

SEV=9 IKEDBG/0 RPT=393 172.18.124.96 15:24:09.830 08/27/2001 659  
[Group [crlgroup] User [ipsecuser  
constructing blank hash

SEV=9 IKEDBG/0 RPT=394 172.18.124.96 15:24:09.830 08/27/2001 660  
[Group [crlgroup] User [ipsecuser  
constructing ISA\_SA for ipsec

SEV=5 IKE/75 RPT=4 172.18.124.96 15:24:09.830 08/27/2001 661  
[Group [crlgroup] User [ipsecuser  
Overriding Initiator's IPsec rekeying duration from 2147483 to  
seconds 28800

SEV=9 IKEDBG/1 RPT=71 172.18.124.96 15:24:09.830 08/27/2001 663  
[Group [crlgroup] User [ipsecuser  
constructing ipsec nonce payload

SEV=9 IKEDBG/1 RPT=72 172.18.124.96 15:24:09.830 08/27/2001 664

```
[Group [crlgroup] User [ipsecuser
      constructing proxy ID

SEV=7 IKEDBG/0 RPT=395 172.18.124.96 15:24:09.830 08/27/2001 665
      [Group [crlgroup] User [ipsecuser
      :Transmitting Proxy Id
      Remote host: 10.10.10.1 Protocol 0 Port 0
      Local subnet: 0.0.0.0 mask 0.0.0.0 Protocol 0 Port 0

SEV=7 IKEDBG/0 RPT=396 172.18.124.96 15:24:09.830 08/27/2001 669
      [Group [crlgroup] User [ipsecuser
      Sending RESPONDER LIFETIME notification to Initiator

SEV=9 IKEDBG/0 RPT=397 172.18.124.96 15:24:09.830 08/27/2001 671
      [Group [crlgroup] User [ipsecuser
      constructing qm hash

SEV=8 IKEDBG/0 RPT=398 172.18.124.96 15:24:09.830 08/27/2001 672
      : SENDING Message (msgid=7102b770) with payloads
      HDR + HASH (8) ... total length : 176

SEV=8 IKEDBG/0 RPT=399 172.18.124.96 15:24:09.830 08/27/2001 674
      : RECEIVED Message (msgid=67342bd4) with payloads
      HDR + HASH (8) + NONE (0) ... total length : 48

SEV=9 IKEDBG/0 RPT=400 172.18.124.96 15:24:09.830 08/27/2001 676
      [Group [crlgroup] User [ipsecuser
      processing hash

SEV=9 IKEDBG/0 RPT=401 172.18.124.96 15:24:09.830 08/27/2001 677
      [Group [crlgroup] User [ipsecuser
      loading all IPSEC SAs

SEV=8 AUTHDBG/2 RPT=10 15:24:09.830 08/27/2001 678
      (AUTH_Close(6

SEV=9 IKEDBG/1 RPT=73 172.18.124.96 15:24:09.830 08/27/2001 679
      [Group [crlgroup] User [ipsecuser
      !Generating Quick Mode Key

SEV=9 IKEDBG/1 RPT=74 172.18.124.96 15:24:09.830 08/27/2001 680
      [Group [crlgroup] User [ipsecuser
      !Generating Quick Mode Key

SEV=7 IKEDBG/0 RPT=402 172.18.124.96 15:24:09.830 08/27/2001 681
      [Group [crlgroup] User [ipsecuser
      :Loading host
      Dst: 172.18.124.132
      Src: 10.10.10.1

SEV=4 IKE/49 RPT=3 172.18.124.96 15:24:09.830 08/27/2001 683
      [Group [crlgroup] User [ipsecuser
      (Security negotiation complete for User (ipsecuser
      Responder, Inbound SPI = 0x03277ad1, Outbound SPI = 0x45e0f379

SEV=9 IPSECDBG/6 RPT=13 15:24:09.830 08/27/2001 686
      ,IPSEC key message parse - msgtype 1, len 604, vers 1, pid 00000000
      ,seq 0, err 0, type 2, mode 1, state 64, label 0, pad 0, spi 45e0f379
      ,encrKeyLen 24, hashKeyLen 16, ivlen 8, alg 2, hmacAlg 3, lifetype 0
      lifetime1 7633504, lifetime2 0, dsId 0

SEV=9 IPSECDBG/1 RPT=39 15:24:09.830 08/27/2001 690
      !Processing KEY_ADD msgg
```

SEV=9 IPSECDBG/1 RPT=40 15:24:09.840 08/27/2001 691  
key\_msghdr2secassoc(): Enter

SEV=7 IPSECDBG/1 RPT=41 15:24:09.840 08/27/2001 692  
No USER filter configured

SEV=9 IPSECDBG/1 RPT=42 15:24:09.840 08/27/2001 693  
KeyProcessAdd: Enter

SEV=8 IPSECDBG/1 RPT=43 15:24:09.840 08/27/2001 694  
KeyProcessAdd: Adding outbound SA

SEV=8 IPSECDBG/1 RPT=44 15:24:09.840 08/27/2001 695  
KeyProcessAdd: src 172.18.124.132 mask 0.0.0.0, dst 10.10.10.1  
mask 0.0.0.0

SEV=8 IPSECDBG/1 RPT=45 15:24:09.840 08/27/2001 696  
KeyProcessAdd: FilterIpssecAddIkeSa success

SEV=9 IPSECDBG/6 RPT=14 15:24:09.840 08/27/2001 697  
,IPSEC key message parse - msgtype 3, len 326, vers 1, pid 00000000  
,seq 0, err 0, type 2, mode 1, state 32, label 0, pad 0, spi 03277ad1  
,encrKeyLen 24, hashKeyLen 16, ivlen 8, alg 2, hmacAlg 3, lifetype 0  
lifetime1 7631924, lifetime2 0, dsId 0

SEV=9 IPSECDBG/1 RPT=46 15:24:09.840 08/27/2001 701  
!Processing KEY\_UPDATE msg

SEV=9 IPSECDBG/1 RPT=47 15:24:09.840 08/27/2001 702  
Update inbound SA addresses

SEV=9 IPSECDBG/1 RPT=48 15:24:09.840 08/27/2001 703  
key\_msghdr2secassoc(): Enter

SEV=7 IPSECDBG/1 RPT=49 15:24:09.840 08/27/2001 704  
No USER filter configured

SEV=9 IPSECDBG/1 RPT=50 15:24:09.840 08/27/2001 705  
KeyProcessUpdate: Enter

SEV=8 IPSECDBG/1 RPT=51 15:24:09.840 08/27/2001 706  
KeyProcessUpdate: success

SEV=8 IKEDBG/7 RPT=3 15:24:09.840 08/27/2001 707  
IKE got a KEY\_ADD msg for SA: SPI = 0x45e0f379

SEV=8 IKEDBG/0 RPT=403 15:24:09.840 08/27/2001 708  
pitcher: rcv KEY\_UPDATE, spi 0x3277ad1

SEV=4 IKE/120 RPT=3 172.18.124.96 15:24:09.840 08/27/2001 709  
[Group [crlgroup] User [ipsecuser  
(PHASE 2 COMPLETED (msgid=67342bd4

SEV=8 AUTHDBG/10 RPT=10 15:24:09.840 08/27/2001 710  
(AUTH\_Int\_FreeAuthCB(3eb7914

SEV=9 AUTHDBG/19 RPT=10 15:24:09.840 08/27/2001 711  
instance = 7, clone\_instance = 0

SEV=7 AUTH/13 RPT=10 15:24:09.840 08/27/2001 712  
Authentication session closed: handle = 6

SEV=8 IKEDBG/0 RPT=404 172.18.124.96 15:24:10.480 08/27/2001 713  
: RECEIVED Message (msgid=7102b770) with payloads

HDR + HASH (8) + NONE (0) ... total length : 48

SEV=9 IKEDBG/0 RPT=405 172.18.124.96 15:24:10.490 08/27/2001 715  
[Group [crlgroup] User [ipsecuser  
processing hash

SEV=9 IKEDBG/0 RPT=406 172.18.124.96 15:24:10.490 08/27/2001 716  
[Group [crlgroup] User [ipsecuser  
loading all IPSEC SAs

SEV=9 IKEDBG/1 RPT=75 172.18.124.96 15:24:10.490 08/27/2001 717  
[Group [crlgroup] User [ipsecuser  
!Generating Quick Mode Key

SEV=9 IKEDBG/1 RPT=76 172.18.124.96 15:24:10.490 08/27/2001 718  
[Group [crlgroup] User [ipsecuser  
!Generating Quick Mode Key

SEV=7 IKEDBG/0 RPT=407 172.18.124.96 15:24:10.490 08/27/2001 719  
[Group [crlgroup] User [ipsecuser  
:Loading subnet  
Dst: 0.0.0.0 mask: 0.0.0.0  
Src: 10.10.10.1

SEV=4 IKE/49 RPT=4 172.18.124.96 15:24:10.490 08/27/2001 721  
[Group [crlgroup] User [ipsecuser  
(Security negotiation complete for User (ipsecuser  
Responder, Inbound SPI = 0x63ac8da0, Outbound SPI = 0x4a1a91ee

SEV=9 IPSECDBG/6 RPT=15 15:24:10.490 08/27/2001 724  
,IPSEC key message parse - msgtype 1, len 604, vers 1, pid 00000000  
,seq 0, err 0, type 2, mode 1, state 64, label 0, pad 0, spi 4a1a91ee  
,encrKeyLen 24, hashKeyLen 16, ivlen 8, alg 2, hmacAlg 3, lifetype 0  
lifetime1 7633504, lifetime2 0, dsId 0

SEV=9 IPSECDBG/1 RPT=52 15:24:10.490 08/27/2001 728  
!Processing KEY\_ADD msg

SEV=9 IPSECDBG/1 RPT=53 15:24:10.490 08/27/2001 729  
key\_msghdr2secassoc(): Enter

SEV=7 IPSECDBG/1 RPT=54 15:24:10.490 08/27/2001 730  
No USER filter configured

SEV=9 IPSECDBG/1 RPT=55 15:24:10.490 08/27/2001 731  
KeyProcessAdd: Enter

SEV=8 IPSECDBG/1 RPT=56 15:24:10.490 08/27/2001 732  
KeyProcessAdd: Adding outbound SA

SEV=8 IPSECDBG/1 RPT=57 15:24:10.490 08/27/2001 733  
KeyProcessAdd: src 0.0.0.0 mask 255.255.255.255, dst 10.10.10.1  
mask 0.0.0.0

SEV=8 IPSECDBG/1 RPT=58 15:24:10.490 08/27/2001 734  
KeyProcessAdd: FilterIpssecAddIkeSa success

SEV=9 IPSECDBG/6 RPT=16 15:24:10.490 08/27/2001 735  
,IPSEC key message parse - msgtype 3, len 326, vers 1, pid 00000000  
,seq 0, err 0, type 2, mode 1, state 32, label 0, pad 0, spi 63ac8da0  
,encrKeyLen 24, hashKeyLen 16, ivlen 8, alg 2, hmacAlg 3, lifetype 0  
lifetime1 7631924, lifetime2 0, dsId 0

SEV=9 IPSECDBG/1 RPT=59 15:24:10.490 08/27/2001 739

```
!Processing KEY_UPDATE msg

SEV=9 IPSECDBG/1 RPT=60 15:24:10.490 08/27/2001 740
Update inbound SA addresses

SEV=9 IPSECDBG/1 RPT=61 15:24:10.490 08/27/2001 741
key_msghdr2secassoc(): Enter

SEV=7 IPSECDBG/1 RPT=62 15:24:10.490 08/27/2001 742
No USER filter configured

SEV=9 IPSECDBG/1 RPT=63 15:24:10.490 08/27/2001 743
KeyProcessUpdate: Enter

SEV=8 IPSECDBG/1 RPT=64 15:24:10.490 08/27/2001 744
KeyProcessUpdate: success

SEV=8 IKEDBG/7 RPT=4 15:24:10.490 08/27/2001 745
IKE got a KEY_ADD msg for SA: SPI = 0x4a1a91ee

SEV=8 IKEDBG/0 RPT=408 15:24:10.490 08/27/2001 746
pitcher: rcv KEY_UPDATE, spi 0x63ac8da0

SEV=4 IKE/120 RPT=4 172.18.124.96 15:24:10.490 08/27/2001 747
[Group [crlgroup] User [ipsecuser
(PHASE 2 COMPLETED (msgid=7102b770

SEV=8 IKEDBG/0 RPT=409 172.18.124.96 15:24:13.390 08/27/2001 748
: RECEIVED Message (msgid=75c17db8) with payloads
HDR + HASH (8) + DELETE (12) + NONE (0) ... total length : 68

SEV=9 IKEDBG/0 RPT=410 172.18.124.96 15:24:13.390 08/27/2001 750
[Group [crlgroup] User [ipsecuser
processing hash

SEV=9 IKEDBG/0 RPT=411 15:24:13.390 08/27/2001 751
processing delete

SEV=5 IKE/50 RPT=3 172.18.124.96 15:24:13.390 08/27/2001 752
[Group [crlgroup] User [ipsecuser
(Connection terminated for peer ipsecuser (Peer Terminate
Remote Proxy 10.10.10.1, Local Proxy 0.0.0.0

SEV=7 IKEDBG/9 RPT=3 172.18.124.96 15:24:13.390 08/27/2001 755
[Group [crlgroup] User [ipsecuser
IKE Deleting SA: Remote Proxy 10.10.10.1, Local Proxy 0.0.0.0

SEV=9 IPSECDBG/6 RPT=17 15:24:13.390 08/27/2001 757
,IPSEC key message parse - msgtype 2, len 258, vers 1, pid 00000000
,seq 0, err 0, type 2, mode 0, state 32, label 0, pad 0, spi 63ac8da0
,encrKeyLen 0, hashKeyLen 0, ivlen 0, alg 0, hmacAlg 0, lifetype 0
lifetime1 7633504, lifetime2 0, dsId 0

SEV=9 IPSECDBG/1 RPT=65 15:24:13.390 08/27/2001 761
!Processing KEY_DELETE msg

SEV=9 IPSECDBG/6 RPT=18 15:24:13.390 08/27/2001 762
,IPSEC key message parse - msgtype 2, len 258, vers 1, pid 00000000
,seq 0, err 0, type 2, mode 0, state 64, label 0, pad 0, spi 4a1a91ee
,encrKeyLen 0, hashKeyLen 0, ivlen 0, alg 0, hmacAlg 0, lifetype 0
lifetime1 7631924, lifetime2 0, dsId 0

SEV=9 IPSECDBG/1 RPT=66 15:24:13.390 08/27/2001 766
!Processing KEY_DELETE msg
```



SEV=9 IPSECDBG/1 RPT=67 15:24:13.390 08/27/2001 767  
key\_msghdr2secassoc(): Enter

SEV=7 IPSECDBG/1 RPT=68 15:24:13.390 08/27/2001 768  
No USER filter configured

SEV=8 IKEDBG/0 RPT=412 15:24:13.390 08/27/2001 769  
pitcher: received key delete msg, spi 0x63ac8da0

SEV=8 IKEDBG/0 RPT=413 15:24:13.390 08/27/2001 770  
pitcher: received key delete msg, spi 0x4a1a91ee

SEV=8 IKEDBG/0 RPT=414 172.18.124.96 15:24:13.400 08/27/2001 771  
: RECEIVED Message (msgid=8c5dbd18) with payloads  
HDR + HASH (8) + DELETE (12) + NONE (0) ... total length : 68

SEV=9 IKEDBG/0 RPT=415 172.18.124.96 15:24:13.400 08/27/2001 773  
[Group [crlgroup] User [ipsecuser  
processing hash

SEV=9 IKEDBG/0 RPT=416 15:24:13.400 08/27/2001 774  
processing delete

SEV=5 IKE/50 RPT=4 172.18.124.96 15:24:13.400 08/27/2001 775  
[Group [crlgroup] User [ipsecuser  
(Connection terminated for peer ipsecuser (Peer Terminate  
Remote Proxy 10.10.10.1, Local Proxy 172.18.124.132

SEV=7 IKEDBG/9 RPT=4 172.18.124.96 15:24:13.400 08/27/2001 778  
[Group [crlgroup] User [ipsecuser  
IKE Deleting SA: Remote Proxy 10.10.10.1, Local Proxy 172.18.124.132

SEV=9 IKEDBG/0 RPT=417 172.18.124.96 15:24:13.400 08/27/2001 780  
[Group [crlgroup] User [ipsecuser  
IKE SA MM:17040521 rcv'd Terminate: state MM\_ACTIVE  
flags 0x0061f042, refcnt 1, tuncnt 0

SEV=9 IKEDBG/0 RPT=418 172.18.124.96 15:24:13.400 08/27/2001 783  
[Group [crlgroup] User [ipsecuser  
:IKE SA MM:17040521 terminating  
flags 0x0061f002, refcnt 0, tuncnt 0

SEV=9 IKEDBG/0 RPT=419 15:24:13.400 08/27/2001 785  
sending delete message

SEV=9 IKEDBG/0 RPT=420 172.18.124.96 15:24:13.400 08/27/2001 786  
[Group [crlgroup] User [ipsecuser  
constructing blank hash

SEV=9 IKEDBG/0 RPT=421 15:24:13.400 08/27/2001 787  
constructing delete payload

SEV=9 IKEDBG/0 RPT=422 172.18.124.96 15:24:13.400 08/27/2001 788  
[Group [crlgroup] User [ipsecuser  
constructing qm hash

SEV=8 IKEDBG/0 RPT=423 172.18.124.96 15:24:13.400 08/27/2001 789  
: SENDING Message (msgid=37dd4154) with payloads  
HDR + HASH (8) ... total length : 76

SEV=9 IPSECDBG/6 RPT=19 15:24:13.400 08/27/2001 791  
,IPSEC key message parse - msgtype 2, len 258, vers 1, pid 00000000  
,seq 0, err 0, type 2, mode 0, state 32, label 0, pad 0, spi 03277ad1

,encrKeyLen 0, hashKeyLen 0, ivlen 0, alg 0, hmacAlg 0, lifetype 0  
lifetime1 7633504, lifetime2 0, dsId 0

SEV=9 IPSECDBG/1 RPT=69 15:24:13.400 08/27/2001 795  
!Processing KEY\_DELETE msg

SEV=4 AUTH/27 RPT=2 10.10.10.1 15:24:13.400 08/27/2001 796  
:User [ipsecuser] disconnected  
Duration: 0:00:03  
Bytes xmt: 0  
Bytes rcv: 0  
Reason: User Requested

SEV=9 IPSECDBG/6 RPT=20 15:24:13.400 08/27/2001 798  
,IPSEC key message parse - msgtype 2, len 258, vers 1, pid 00000000  
,seq 0, err 0, type 2, mode 0, state 64, label 0, pad 0, spi 45e0f379  
,encrKeyLen 0, hashKeyLen 0, ivlen 0, alg 0, hmacAlg 0, lifetype 0  
lifetime1 7631924, lifetime2 0, dsId 0

SEV=9 IPSECDBG/1 RPT=70 15:24:13.400 08/27/2001 802  
!Processing KEY\_DELETE msg

SEV=9 IPSECDBG/1 RPT=71 15:24:13.400 08/27/2001 803  
key\_msghdr2secassoc(): Enter

SEV=7 IPSECDBG/1 RPT=72 15:24:13.400 08/27/2001 804  
No USER filter configured

SEV=8 IKEDBG/0 RPT=424 15:24:13.400 08/27/2001 805  
pitcher: received key delete msg, spi 0x3277ad1

SEV=8 IKEDBG/0 RPT=425 15:24:13.400 08/27/2001 806  
pitcher: received key delete msg, spi 0x45e0f379

SEV=6 IKE/38 RPT=3 172.18.124.96 15:24:13.400 08/27/2001 807  
(Header invalid, missing SA payload! (next payload = 8

SEV=4 AUTH/28 RPT=4 15:40:47.290 08/27/2001 808  
Management user admin disconnected: duration 0:30:09

SEV=3 HTTP/7 RPT=3 172.18.124.96 15:44:49.770 08/27/2001 809  
HTTP 401 Unauthorized: Authorization Failed

SEV=5 AUTH/35 RPT=5 15:44:57.200 08/27/2001 810  
! ..User [ admin ] attempted ADMIN logon

SEV=4 AUTH/21 RPT=7 15:44:57.200 08/27/2001 811  
User admin connected

SEV=4 HTTP/47 RPT=5 172.18.124.96 15:44:57.200 08/27/2001 812  
.New administrator login: admin

SEV=1 REBOOT/1 RPT=1 15:51:51.510 08/27/2001 813  
.Reboot scheduled immediately

SEV=4 AUTH/28 RPT=5 15:51:51.510 08/27/2001 814  
Management user admin disconnected: duration 0:06:54

SEV=4 CONFIG/17 RPT=4 15:52:17.610 08/27/2001 815  
.Done writing configuration file, Success

SEV=1 REBOOT/6 RPT=1 15:52:17.610 08/27/2001 816  
.Rebooting VPN 3000 Concentrator Series now

SEV=1 EVENT/37 RPT=1 15:52:57.240 08/27/2001 1  
(Reset Reason : 2 (Hardware-Reset

SEV=5 CAPI/7 RPT=1 15:52:52.410 08/27/2001 2  
CAPI - SEP Slot #1 disabled

SEV=4 CONFIG/15 RPT=1 15:52:56.100 08/27/2001 3  
.READ header End not found

SEV=4 HTTP/28 RPT=1 15:52:57.280 08/27/2001 4  
.HTTP server starting

SEV=3 IP/1 RPT=1 15:52:57.650 08/27/2001 5  
.IP Interface 1 status changed to Link Up

SEV=3 IP/1 RPT=2 15:52:57.670 08/27/2001 6  
.IP Interface 2 status changed to Link Up

SEV=3 IP/2 RPT=1 15:52:57.960 08/27/2001 7  
.IP Interface 1 status changed to Link Down

SEV=3 IP/2 RPT=2 15:52:57.960 08/27/2001 8  
.IP Interface 2 status changed to Link Down

SEV=3 IP/1 RPT=3 15:52:59.960 08/27/2001 9  
.IP Interface 1 status changed to Link Up

SEV=5 SSL/5 RPT=1 15:53:02.680 08/27/2001 10  
.SSL Initialized

SEV=4 TELNETDBG/1 RPT=1 15:53:02.680 08/27/2001 11  
Telnetd started

SEV=4 TELNET/3 RPT=1 15:53:02.680 08/27/2001 12  
Telnetd server running

SEV=8 AUTHDBG/13 RPT=1 15:53:02.690 08/27/2001 13  
(AUTH\_MgmtInitServer(6c5800, 1501

SEV=8 AUTHDBG/95 RPT=1 15:53:02.690 08/27/2001 14  
(LdapApiOpen(eee2bc

SEV=8 AUTHDBG/13 RPT=2 15:53:02.690 08/27/2001 15  
(AUTH\_MgmtInitServer(6c5800, 1

SEV=8 AUTHDBG/8 RPT=1 15:53:02.690 08/27/2001 16  
(AUTH\_TerminateSessions(e3599c

SEV=4 PPTP/25 RPT=1 15:53:02.700 08/27/2001 17  
Sockets listening for PPTP connections on socket 1

SEV=7 CERT/36 RPT=1 15:53:02.710 08/27/2001 18  
Load trusted certificate: filename = SIGN0013.PEM

SEV=7 CERT/37 RPT=1 15:53:02.730 08/27/2001 19  
Load identity certificate: filename = CERT0005.PEM

SEV=8 AUTHDBG/44 RPT=1 15:53:02.810 08/27/2001 20  
(IntDB\_Open(e3599c

SEV=4 AUTH/15 RPT=1 15:53:02.810 08/27/2001 21  
Server name = Internal, type = Internal, status = Active

SEV=9 AUTHDBG/17 RPT=1 15:53:02.810 08/27/2001 22

```
Auth) index_max = 2)

SEV=8 AUTHDBG/13 RPT=3 15:53:02.810 08/27/2001 23
(AUTH_MgmtInitServer(6c5800, 2

SEV=8 AUTHDBG/8 RPT=2 15:53:02.810 08/27/2001 24
(AUTH_TerminateSessions(e35b94

SEV=8 AUTHDBG/24 RPT=1 15:53:02.910 08/27/2001 25
(Radius_Open(e35b94

SEV=7 AUTH/1 RPT=1 15:53:02.910 08/27/2001 26
UDP socket opened: 1, server = 172.18.124.109

SEV=7 AUTH/1 RPT=2 15:53:02.910 08/27/2001 27
UDP socket opened: 1, server = 172.18.124.109

SEV=4 AUTH/15 RPT=2 15:53:02.910 08/27/2001 28
Server name = 172.18.124.109, type = RADIUS, status = Active

SEV=9 AUTHDBG/17 RPT=2 15:53:02.910 08/27/2001 29
Auth) index_max = 3)

SEV=4 SSH/2 RPT=1 15:53:03.730 08/27/2001 30
.SSH server starting

SEV=5 AUTH/35 RPT=1 16:06:29.890 08/27/2001 31
! ..User [ admin ] attempted ADMIN logon

SEV=4 AUTH/21 RPT=1 16:06:29.890 08/27/2001 32
User admin connected

SEV=4 HTTP/47 RPT=1 172.18.124.96 16:06:29.890 08/27/2001 33
.New administrator login: admin
```

## عمل شبكة VPN

```
Sev=Info/6DIALER/0x63300002 08/27/01 16:13:15.088 228
.Initiating connection

Sev=Info/4CM/0x63100002 08/27/01 16:13:15.098 229
Begin connection process

Sev=Info/4CM/0x63100004 08/27/01 16:13:15.439 230
Establish secure connection using Ethernet

Sev=Info/4CM/0x63100026 08/27/01 16:13:15.439 231
"Attempt connection with server "172.18.124.132

Sev=Info/6IKE/0x6300003B 08/27/01 16:13:15.439 232
.Attempting to establish a connection with 172.18.124.132

Sev=Info/4IKE/0x63000013 08/27/01 16:13:15.959 233
SENDING >>> ISAKMP OAK MM (SA, VID, VID, VID) to 172.18.124.132

Sev=Info/4IPSEC/0x63700014 08/27/01 16:13:15.969 234
Deleted all keys

Sev=Info/5IKE/0x6300002F 08/27/01 16:13:15.969 235
Received ISAKMP packet: peer = 172.18.124.132
```

Sev=Info/4IKE/0x63000014 08/27/01 16:13:15.969 236  
RECEIVING <<< ISAKMP OAK MM (SA) from 172.18.124.132

Sev=Info/4IKE/0x63000013 08/27/01 16:13:16.019 237  
SENDING >>> ISAKMP OAK MM (KE, NON) to 172.18.124.132

Sev=Info/5IKE/0x6300002F 08/27/01 16:13:16.059 238  
Received ISAKMP packet: peer = 172.18.124.132

Sev=Info/4IKE/0x63000014 08/27/01 16:13:16.059 239  
(RECEIVING <<< ISAKMP OAK MM (KE, NON, CERT\_REQ, VID, VID, VID, VID  
from 172.18.124.132

Sev=Info/5IKE/0x63000059 08/27/01 16:13:16.059 240  
Vendor ID payload = 12F5F28C457168A9702D9FE274CC0100

Sev=Info/5IKE/0x63000001 08/27/01 16:13:16.059 241  
Peer is a Cisco-Unity compliant peer

Sev=Info/5IKE/0x63000059 08/27/01 16:13:16.059 242  
Vendor ID payload = 09002689DFD6B712

Sev=Info/5IKE/0x63000059 08/27/01 16:13:16.059 243  
Vendor ID payload = 9A21C90230105BB437E5BE5FAF5229A5

Sev=Info/5IKE/0x63000059 08/27/01 16:13:16.059 244  
Vendor ID payload = 1F07F70EAA6514D3B0FA96542A500300

Sev=Info/4IKE/0x63000013 08/27/01 16:13:16.109 245  
,SENDING >>> ISAKMP OAK MM \*(ID, CERT, CERT\_REQ, SIG  
NOTIFY:STATUS\_INITIAL\_CONTACT) to 172.18.124.132

Sev=Info/5IKE/0x6300002F 08/27/01 16:13:16.480 246  
Received ISAKMP packet: peer = 172.18.124.132

Sev=Info/4IKE/0x63000014 08/27/01 16:13:16.480 247  
RECEIVING <<< ISAKMP OAK MM \*(ID, CERT, SIG, VID) from 172.18.124.132

Sev=Info/5IKE/0x63000059 08/27/01 16:13:16.590 248  
Vendor ID payload = AFCAD71368A1F1C96B8696FC77570100

Sev=Info/5IKE/0x63000001 08/27/01 16:13:16.590 249  
Peer supports DPD

Sev=Info/5IKE/0x6300002F 08/27/01 16:13:16.590 250  
Received ISAKMP packet: peer = 172.18.124.132

Sev=Info/4IKE/0x63000014 08/27/01 16:13:16.590 251  
RECEIVING <<< ISAKMP OAK TRANS \*(HASH, ATTR) from 172.18.124.132

Sev=Info/4CM/0x63100015 08/27/01 16:13:16.590 252  
Launch xAuth application

Sev=Info/4CM/0x63100017 08/27/01 16:13:20.075 253  
xAuth application returned

Sev=Info/4IKE/0x63000013 08/27/01 16:13:20.075 254  
SENDING >>> ISAKMP OAK TRANS \*(HASH, ATTR) to 172.18.124.132

Sev=Info/5IKE/0x6300002F 08/27/01 16:13:20.376 255  
Received ISAKMP packet: peer = 172.18.124.132

Sev=Info/4IKE/0x63000014 08/27/01 16:13:20.376 256

```
RECEIVING <<< ISAKMP OAK TRANS *(HASH, ATTR) from 172.18.124.132

    Sev=Info/4CM/0x6310000E 08/27/01 16:13:20.376 257
    Established Phase 1 SA. 1 Phase 1 SA in the system

    Sev=Info/4IKE/0x63000013 08/27/01 16:13:20.376 258
SENDING >>> ISAKMP OAK TRANS *(HASH, ATTR) to 172.18.124.132

    Sev=Info/4IKE/0x63000013 08/27/01 16:13:20.376 259
SENDING >>> ISAKMP OAK TRANS *(HASH, ATTR) to 172.18.124.132

    Sev=Info/5IKE/0x6300002F 08/27/01 16:13:20.386 260
    Received ISAKMP packet: peer = 172.18.124.132

    Sev=Info/4IKE/0x63000014 08/27/01 16:13:20.386 261
RECEIVING <<< ISAKMP OAK TRANS *(HASH, ATTR) from 172.18.124.132

    Sev=Info/5IKE/0x63000010 08/27/01 16:13:20.386 262
MODE_CFG_REPLY: Attribute = INTERNAL_IPV4_ADDRESS: , value = 10.10.10.1

    Sev=Info/5IKE/0x6300000D 08/27/01 16:13:20.386 263
MODE_CFG_REPLY: Attribute = MODECFG_UNITY_SAVEPWD: , value = 0x00000000

    Sev=Info/5IKE/0x6300000D 08/27/01 16:13:20.386 264
MODE_CFG_REPLY: Attribute = MODECFG_UNITY_PFS: , value = 0x00000000

    Sev=Info/4CM/0x63100019 08/27/01 16:13:20.396 265
    Mode Config data received

    Sev=Info/5IKE/0x63000055 08/27/01 16:13:20.436 266
,Received a key request from Driver for IP address 172.18.124.132
    GW IP = 172.18.124.132

    Sev=Info/4IKE/0x63000013 08/27/01 16:13:20.436 267
SENDING >>> ISAKMP OAK QM *(HASH, SA, NON, ID, ID) to 172.18.124.132

    Sev=Info/5IKE/0x63000055 08/27/01 16:13:20.436 268
,Received a key request from Driver for IP address 10.10.10.255
    GW IP = 172.18.124.132

    Sev=Info/4IKE/0x63000013 08/27/01 16:13:20.436 269
SENDING >>> ISAKMP OAK QM *(HASH, SA, NON, ID, ID) to 172.18.124.132

    Sev=Info/5IKE/0x6300002F 08/27/01 16:13:20.446 270
    Received ISAKMP packet: peer = 172.18.124.132

    Sev=Info/4IKE/0x63000014 08/27/01 16:13:20.446 271
(RECEIVING <<< ISAKMP OAK INFO *(HASH, NOTIFY:STATUS_RESP_LIFETIME
    from 172.18.124.132

    Sev=Info/5IKE/0x63000044 08/27/01 16:13:20.446 272
    RESPONDER-LIFETIME notify has value of 86400 seconds

    Sev=Info/5IKE/0x63000046 08/27/01 16:13:20.446 273
This SA has already been alive for 5 seconds, setting expiry to
seconds from now 86395

    Sev=Info/5IKE/0x6300002F 08/27/01 16:13:20.446 274
    Received ISAKMP packet: peer = 172.18.124.132

    Sev=Info/4IKE/0x63000014 08/27/01 16:13:20.446 275
,RECEIVING <<< ISAKMP OAK QM *(HASH, SA, NON, ID, ID
    NOTIFY:STATUS_RESP_LIFETIME) from 172.18.124.132
```

Sev=Info/5IKE/0x63000044 08/27/01 16:13:20.446 276  
RESPONDER-LIFETIME notify has value of 28800 seconds

Sev=Info/4IKE/0x63000013 08/27/01 16:13:20.446 277  
SENDING >>> ISAKMP OAK QM \*(HASH) to 172.18.124.132

Sev=Info/5IKE/0x63000058 08/27/01 16:13:20.446 278  
Loading IPsec SA (Message ID = 0x48935FCE OUTBOUND SPI = 0x3943F7FF  
(INBOUND SPI = 0x65B16829

Sev=Info/5IKE/0x63000025 08/27/01 16:13:20.446 279  
Loaded OUTBOUND ESP SPI: 0x3943F7FF

Sev=Info/5IKE/0x63000026 08/27/01 16:13:20.446 280  
Loaded INBOUND ESP SPI: 0x65B16829

**Sev=Info/4CM/0x6310001A 08/27/01 16:13:20.446 281**  
**One secure connection established**

**Sev=Info/6DIALER/0x63300003 08/27/01 16:13:20.496 282**  
**.Connection established**

Sev=Info/6DIALER/0x63300008 08/27/01 16:13:20.556 283  
MAPI32 Information - Outlook not default mail client

Sev=Info/5IKE/0x6300002F 08/27/01 16:13:21.097 284  
Received ISAKMP packet: peer = 172.18.124.132

Sev=Info/4IKE/0x63000014 08/27/01 16:13:21.097 285  
,RECEIVING <<< ISAKMP OAK QM \*(HASH, SA, NON, ID, ID  
NOTIFY:STATUS\_RESP\_LIFETIME) from 172.18.124.132

Sev=Info/5IKE/0x63000044 08/27/01 16:13:21.097 286  
RESPONDER-LIFETIME notify has value of 28800 seconds

Sev=Info/4IKE/0x63000013 08/27/01 16:13:21.097 287  
SENDING >>> ISAKMP OAK QM \*(HASH) to 172.18.124.132

Sev=Info/5IKE/0x63000058 08/27/01 16:13:21.097 288  
Loading IPsec SA (Message ID = 0x1FE7AC28 OUTBOUND SPI = 0x557D6E94  
(INBOUND SPI = 0x8A8A034D

Sev=Info/5IKE/0x63000025 08/27/01 16:13:21.107 289  
Loaded OUTBOUND ESP SPI: 0x557D6E94

Sev=Info/5IKE/0x63000026 08/27/01 16:13:21.107 290  
Loaded INBOUND ESP SPI: 0x8A8A034D

Sev=Info/4CM/0x63100022 08/27/01 16:13:21.107 291  
.Additional Phase 2 SA established

Sev=Info/4IPSEC/0x63700014 08/27/01 16:13:21.107 292  
Deleted all keys

**Sev=Info/4IPSEC/0x63700010 08/27/01 16:13:21.107 293**  
**Created a new key structure**

**Sev=Info/4IPSEC/0x6370000F 08/27/01 16:13:21.107 294**  
**Added key with SPI=0xffff74339 into key list**

Sev=Info/4IPSEC/0x63700010 08/27/01 16:13:21.107 295  
Created a new key structure

Sev=Info/4IPSEC/0x6370000F 08/27/01 16:13:21.107 296

Added key with SPI=0x2968b165 into key list  
Sev=Info/4IPSEC/0x63700010 08/27/01 16:13:21.107 297  
Created a new key structure  
Sev=Info/4IPSEC/0x6370000F 08/27/01 16:13:21.107 298  
Added key with SPI=0x946e7d55 into key list  
Sev=Info/4IPSEC/0x63700010 08/27/01 16:13:21.107 299  
Created a new key structure  
Sev=Info/4IPSEC/0x6370000F 08/27/01 16:13:21.107 300  
Added key with SPI=0x4d038a8a into key list

## معلومات ذات صلة

- [صفحة دعم مركز Cisco VPN 3000 Series](#)
- [صفحة دعم عميل Cisco VPN 3000 Series](#)
- [صفحة دعم IPsec](#)
- [الدعم التقني والمستندات - Cisco Systems](#)



ةمچرتل هذه ل و ح

ةلأل تاي نقتل ن م ة و مچ م ادخت ساب دن تسم ل ا ذه Cisco ت مچرت  
م ل ا ل ا ا ن ا ع مچ ي ف ن ي م دخت س م ل ل م عد ي و ت ح م م ي دقت ل ة ي ر ش ب ل و  
ا م ك ة ق ي ق د ن و ك ت ن ل ة ل ا ة مچرت ل ض ف ا ن ا ة ظ ح ا ل م ي ج ر ي . ة ص ا خ ل ا م ه ت غ ل ب  
Cisco ي ل خ ت . ف ر ت ح م مچرت م ا ه م د ق ي ي ت ل ا ة ي ف ا ر ت ح ا ل ا ة مچرت ل ا ع م ل ا ح ل ا و ه  
ي ل ا م ا ة ا د ع و ج ر ل ا ب ي ص و ت و ت ا مچرت ل ا ه ذه ة ق د ن ع ا ه ت ي ل و ئ س م Cisco  
Systems ( ر ف و ت م ط ب ا ر ل ا ) ي ل ص ا ل ا ي ز ي ل ج ن ا ل ا دن ت س م ل ا