

# ةي ح ال صل ا عاهت نا ةزيم عم VPN 3000 RADIUS Microsoft نم تنرتن إال ةق داصم مداخ مادخت ساب

## المحتويات

[المقدمة](#)

[المتطلبات الأساسية](#)

[المتطلبات](#)

[المكونات المستخدمة](#)

[الرسم التخطيطي للشبكة](#)

[الاصطلاحات](#)

[تكوين VPN 3000 RADIUS باستخدام ميزة انتهاء الصلاحية](#)

[تكوين مركز VPN 3000](#)

[تكوين Microsoft IAS](#)

[التحقق من الصحة](#)

[استكشاف الأخطاء وإصلاحها](#)

[معلومات ذات صلة](#)

## المقدمة

يسلط هذا المستند الضوء على الخطوات اللازمة لتكوين RADIUS باستخدام ميزة انتهاء الصلاحية على مراكز VPN 3000. يتم استخدام خدمة مصادقة الإنترنت من Microsoft (IAS) التي تم تكوينها ل (PAP) MS-CHAP2 غير مدعوم لهذه الميزة) كخادم RADIUS في هذا المثال. مع تمكين هذه الميزة، تتم مطالبة مستخدمي شبكة VPN بتغيير كلمة مرور Microsoft Windows منتهية الصلاحية عند تشغيل عميل Cisco VPN للاتصال بمركز VPN 3000.

ارجع إلى [تكوين مراكز Cisco VPN 3000 Series لدعم ميزة انتهاء صلاحية كلمة مرور NT مع خادم RADIUS](#) لمعرفة المزيد حول نفس السيناريو باستخدام مصادقة RADIUS.

## المتطلبات الأساسية

### المتطلبات

لا توجد متطلبات خاصة لهذا المستند.

### المكونات المستخدمة

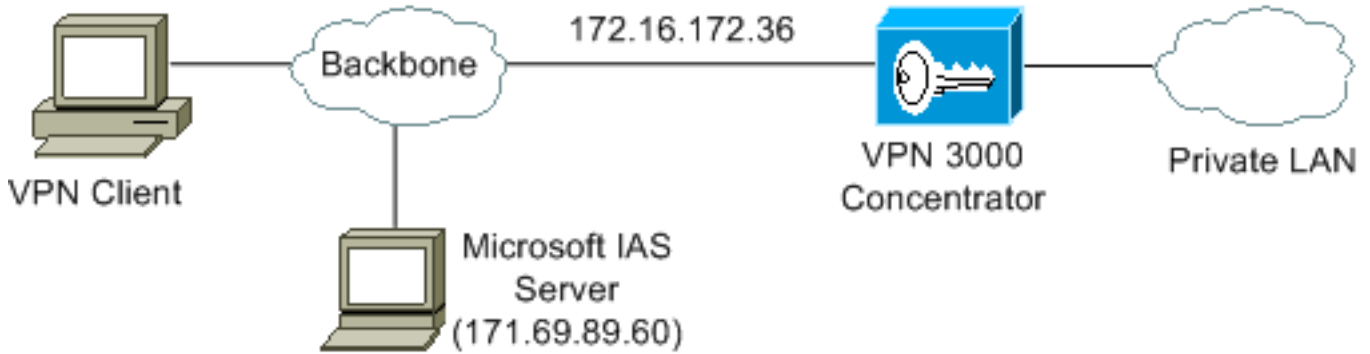
تستند المعلومات الواردة في هذا المستند إلى إصدارات البرامج والمكونات المادية التالية:

- مركز VPN 3000 Cisco مع برنامج Cisco IOS @ الإصدار 3.5.3a
- عميل Cisco VPN، الإصدار 3.5.1C
- Microsoft IAS مثبت على خادم Windows 2000
- يتم تعريف المستخدمين في هذا المستند في Microsoft Windows 2000 Active Directory Server

تم إنشاء المعلومات الواردة في هذا المستند من الأجهزة الموجودة في بيئة معملية خاصة. بدأت جميع الأجهزة المستخدمة في هذا المستند بتكوين ممسوح (افتراضي). إذا كانت شبكتك مباشرة، فتأكد من فهمك للتأثير المحتمل لأي أمر.

## الرسم التخطيطي للشبكة

يستخدم هذا المستند إعداد الشبكة التالي:



## الاصطلاحات

راجع [اصطلاحات تلميحات Cisco التقنية للحصول على مزيد من المعلومات حول اصطلاحات المستندات.](#)

## تكوين VPN 3000 RADIUS باستخدام ميزة انتهاء الصلاحية

### تكوين مركز VPN 3000

أتمت هذا steps in order to شكلت ال VPN 3000 مركز.

1. اخترت تشكيل <مستعمل إدارة> مجموعة in order to شكلت ال VPN مجموعة.

Configuration | User Management | Groups | Modify windowsuser

Check the **Inherit?** box to set a field that you want to default to the base group value. Uncheck the **Inherit?** box and enter a new value to override base group values.

Identity | General | IPSec | Mode Config | Client FW | HW Client | PPTP/L2TP

Identity Parameters		
Attribute	Value	Description
Group Name	windowsuser	Enter a unique name for the group.
Password	*****	Enter the password for the group.
Verify	*****	Verify the group's password.
Type	Internal	External groups are configured on an external authentication server (e.g. RADIUS). Internal groups are configured on the VPN 3000 Concentrator's Internal Database.

Apply Cancel

2. حدد طريقة Xauth المشار إليها بواسطة "المصادقة" ك "RADIUS" مع انتهاء صلاحية" أسفل علامة التبويب IPsec.

IPSec Parameters			
Attribute	Value	Inherit?	Description
IPSec SA	ESP-3DES-MD5	<input checked="" type="checkbox"/>	Select the group's IPSec Security Association.
IKE Peer Identity Validation	If supported by certificate	<input checked="" type="checkbox"/>	Select whether or not to validate the identity of the peer using the peer's certificate.
IKE Keepalives	<input checked="" type="checkbox"/>	<input checked="" type="checkbox"/>	Check to enable the use of IKE keepalives for members of this group.
Tunnel Type	Remote Access	<input checked="" type="checkbox"/>	Select the type of tunnel for this group. Update the Remote Access parameters below as needed.
Remote Access Parameters			
Group Lock	<input type="checkbox"/>	<input checked="" type="checkbox"/>	Lock users into this group.
Authentication	RADIUS with Expiry	<input type="checkbox"/>	Select the authentication method for members of this group. This parameter does not apply to <b>Individual User Authentication</b> .
IPComp	None	<input checked="" type="checkbox"/>	Select the method of IP Compression for members of this group.
Reauthentication on Rekey	<input type="checkbox"/>	<input checked="" type="checkbox"/>	Check to reauthenticate the user on an IKE (Phase-1) rekey.
Mode Configuration	<input checked="" type="checkbox"/>	<input checked="" type="checkbox"/>	Check to initiate the exchange of Mode Configuration parameters with the client. This must be checked if version 2.5 (or earlier) of the the Altiga/Cisco client are being used by members of this group.

Apply Cancel

3. اخترت تشكيل <نظام> <نادل> <صحة هوية> in order to عينت ال RADIUS نادل.

Configuration | System | Servers | Authentication | Modify

Change a configured user authentication server.

Server Type	RADIUS	Selecting <i>Internal Server</i> will let you add users to the internal user database.
Authentication Server	171.69.89.60	Enter IP address or hostname.
Server Port	1645	Enter 0 for default port (1645).
Timeout	4	Enter the timeout for this server (seconds).
Retries	2	Enter the number of retries for this server.
Server Secret	*****	Enter the RADIUS server secret.
Verify	*****	Re-enter the secret.

Apply Cancel

4. قم بتعريف أسلوب تعيين عنوان IP. يستخدم هذا المثال تجمع عناوين IP المحدد محليا على مركز VPN 3000.

This section presents Address Assignment options. Each of the following methods are tried, in order, until an address is found.

- Use Client Address**  Check to use the IP address supplied by the client. This can be overridden by user/group configuration.
- Use Address from Authentication Server**  Check to use an IP address retrieved from an authentication server for the client.
- Use DHCP**  Check to use DHCP to obtain an IP address for the client.
- Use Address Pools**  Check to use internal address pool configuration to obtain an IP address for the client.

Apply

Cancel

5. قم بتحديد تجمع عناوين IP.

This section lets you configure IP Address Pools.

Click the **Add** button to add a pool entry, or select a pool and click **Modify**, **Delete** or **Move**.

## IP Pool Entry

10.10.10.1 - 10.10.10.254

## Actions

Add

Modify

Delete

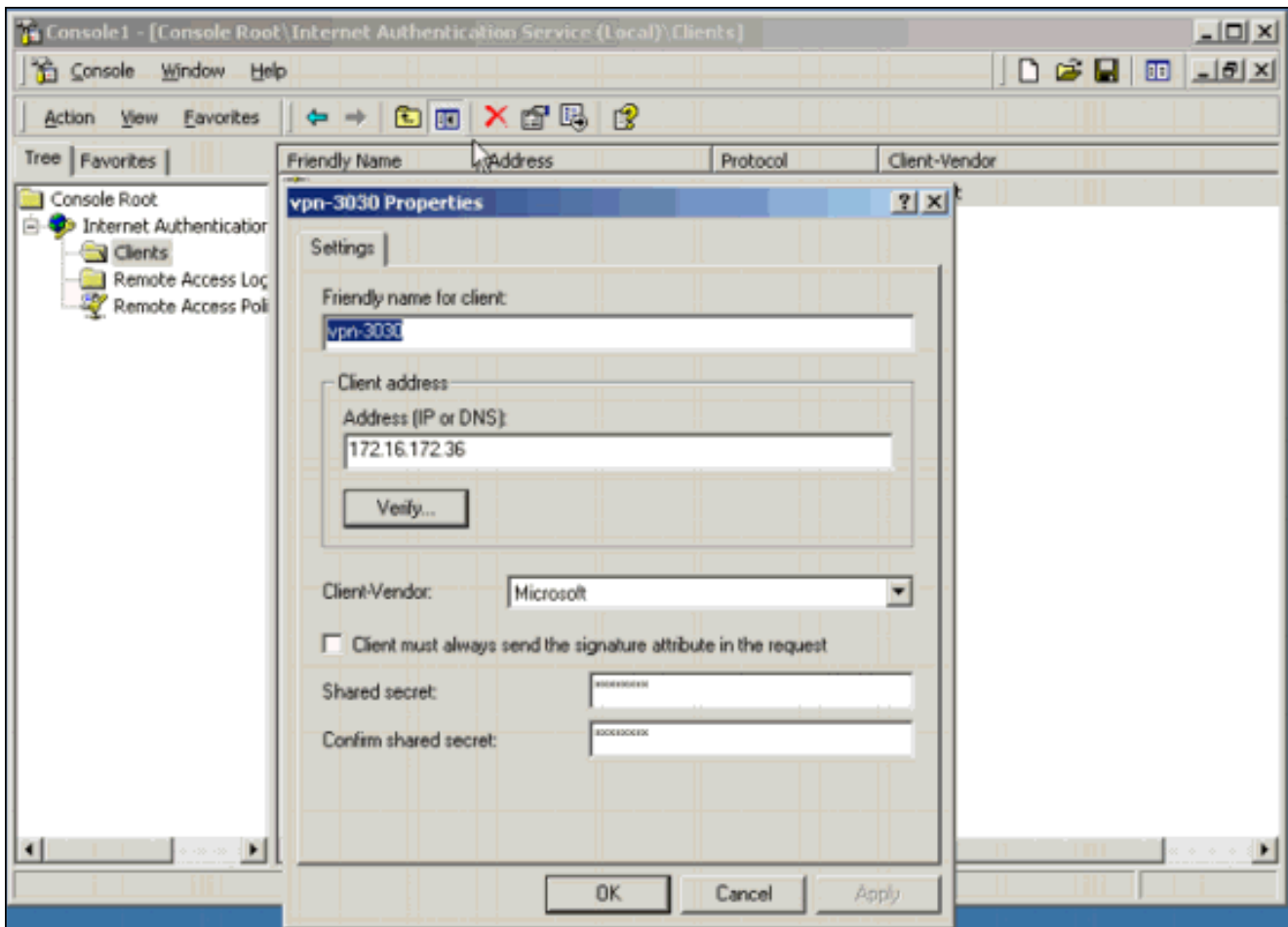
Move Up

Move Down

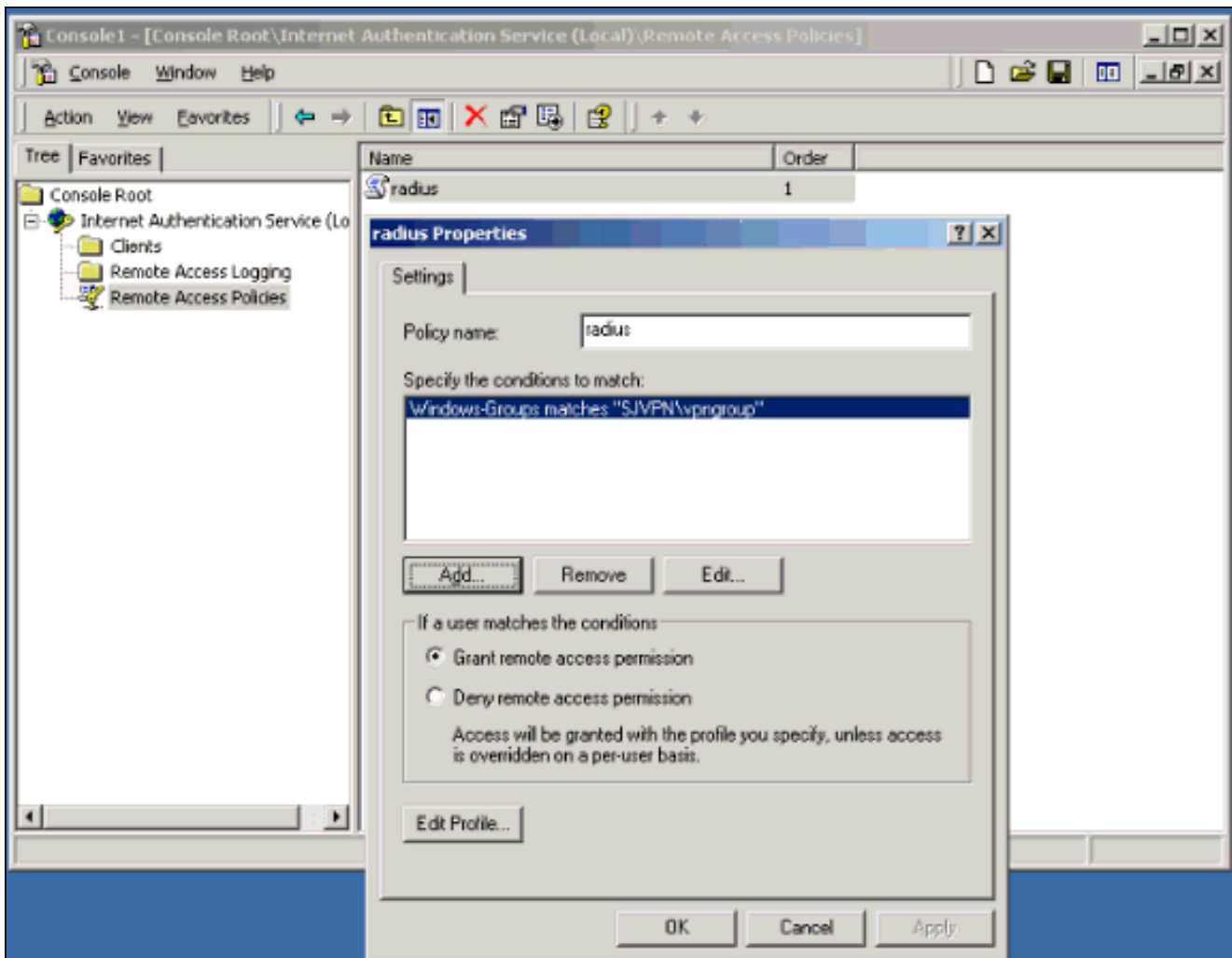
## تكوين Microsoft IAS

أتمت هذا steps in order to شكلت Microsoft IAS.

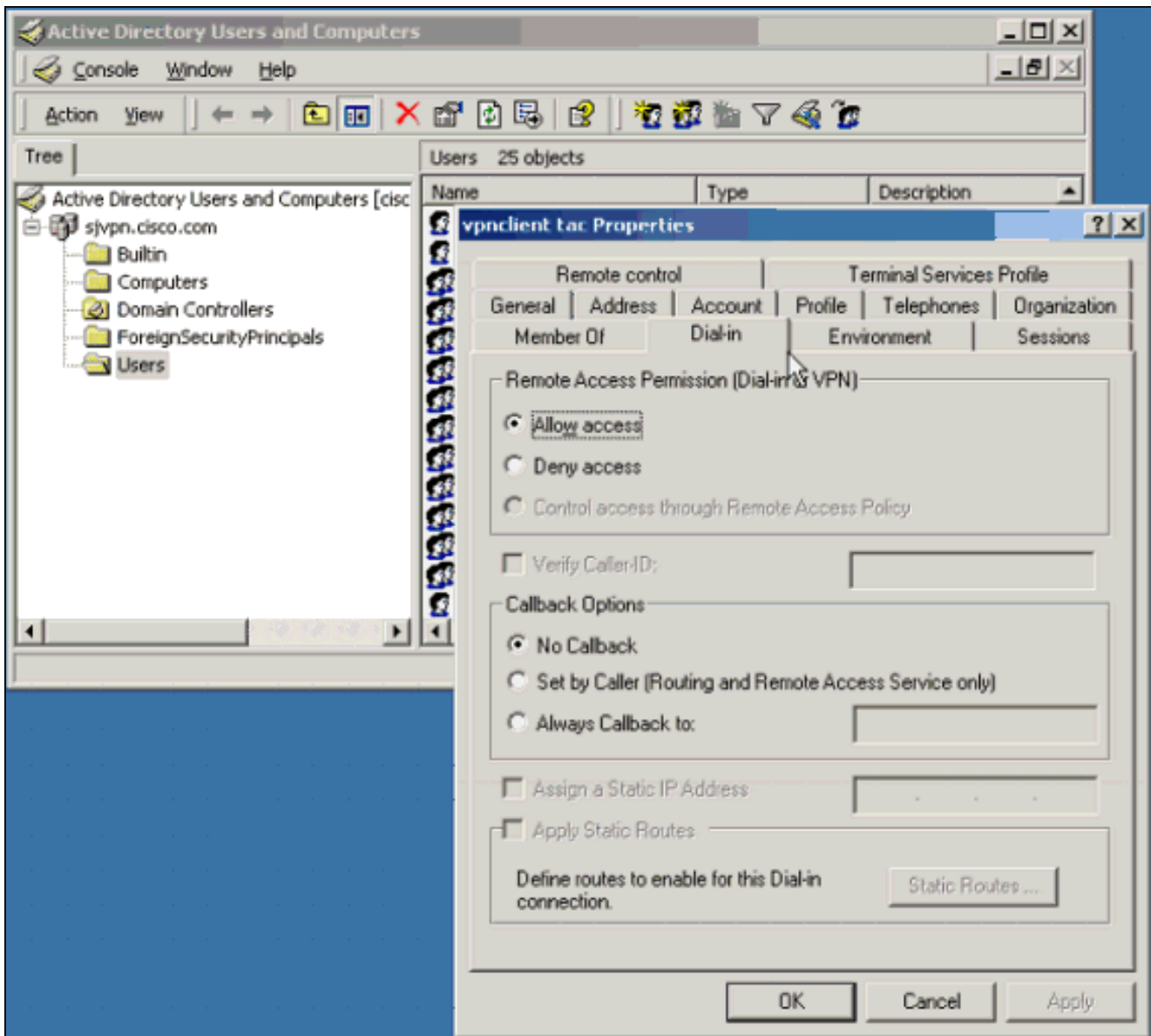
1. قم بتعريف مركز VPN 3000 كعميل. **ملاحظة:** يتم إختيار Microsoft كمورد-عميل للحصول على دعم للسمات الخاصة بمورد (VSA) Microsoft (المطلوبة بواسطة RADIUS مع ميزة انتهاء الصلاحية).



2. تحديد سياسة الوصول عن بعد. في إطار هذا النهج، يتم تحديد مجموعة Windows التي تحتوي على جميع مستخدمي VPN.

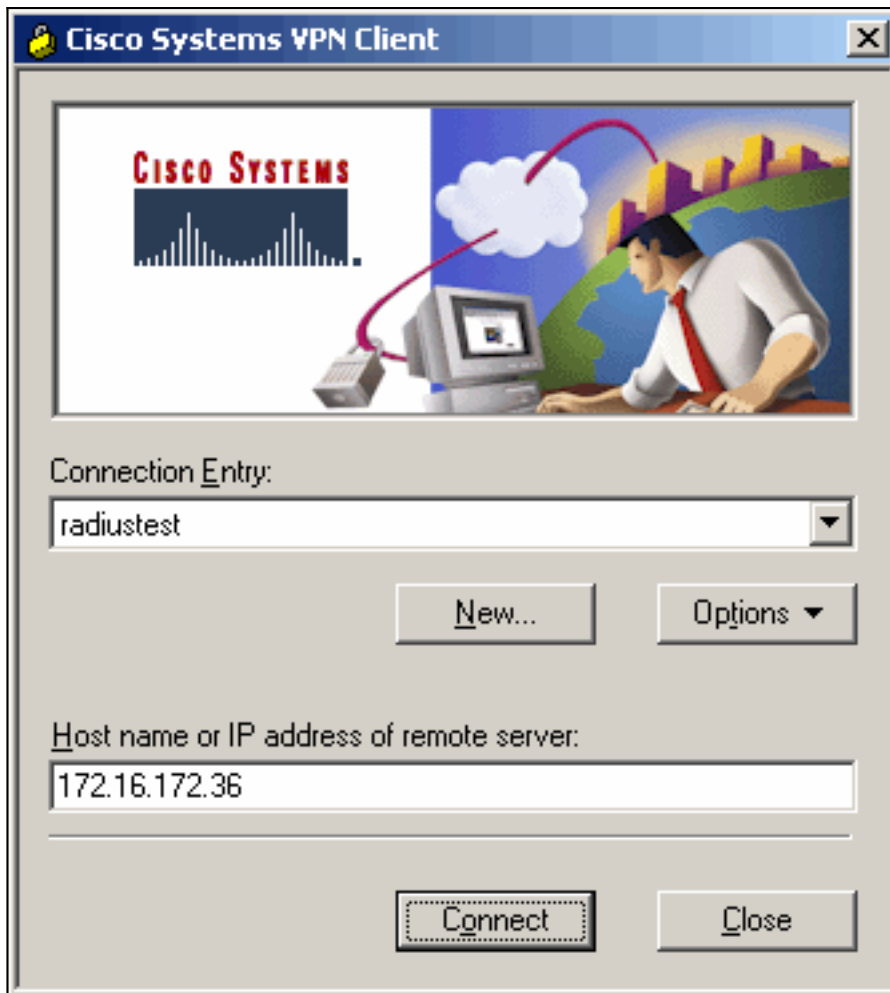


ملاحظة: يجب على مستخدمي Windows التحقق من السماح بالوصول ضمن قسم أذن الوصول عن بعد (الطلب الهاتفي أو VPN) في ملف تعريف المستخدم كما هو موضح أدناه.



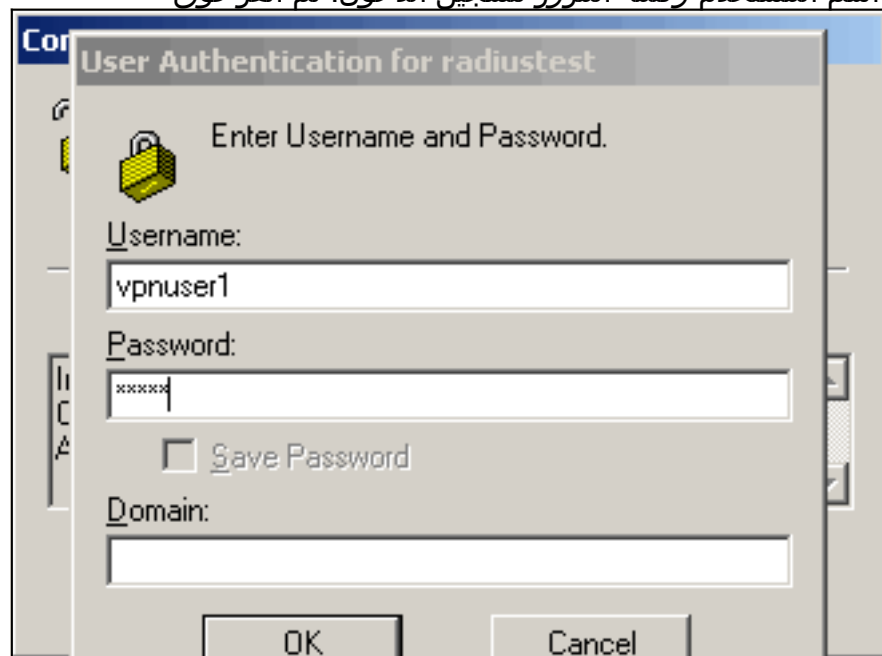
## التحقق من الصحة

توضح هذه الأمثلة كيفية عمل ميزة RADIUS مع انتهاء الصلاحية عند انتهاء صلاحية كلمة مرور Windows. يتم إعلام مستخدم شبكة VPN بأن كلمة المرور قد انتهت صلاحيتها وتمت مطالبتها بإدخال كلمة مرور جديدة.



1. قم بتشغيل عميل Cisco VPN.

2. اكتب اسم المستخدم وكلمة المرور لتسجيل الدخول. ثم انقر فوق



OK

3. عند انتهاء صلاحية كلمة مرور Windows، ستم مطالبتك بتغيير كلمة المرور. اكتب كلمة مرور جديدة. اكتب مرة





أخرى لتأكيد ذلك، ثم انقر فوق موافق.

## استكشاف الأخطاء وإصلاحها

يبيد هذا قسم سجل الحدث على ال VPN 3000 مركز أثناء نفق تفاوض. ارجع إلى الأجزاء الغامقة للاطلاع على كيفية تمرير Microsoft VSAs بين IAS و VPN 3000 Concentrator لإعلام مستخدم VPN بأن كلمة المرور قد انتهت صلاحيتها، واسترجع كلمة مرور Windows الجديدة من مستخدم VPN إلى قاعدة بيانات مستخدم Windows.

```
SEV=8 AUTHDBG/1 RPT=263 16:45:40.920 08/06/2002 1
AUTH_Open() returns 102
```

```
SEV=7 AUTH/12 RPT=264 16:45:40.920 08/06/2002 2
Authentication session opened: handle = 102
```

```
SEV=8 AUTHDBG/3 RPT=302 16:45:40.920 08/06/2002 3
(AUTH_PutAttrTable(102, 742784
```

```
SEV=8 AUTHDBG/6 RPT=183 16:45:40.920 08/06/2002 4
(AUTH_GroupAuthenticate(102, 9aa2e24, 4983ac
```

```
SEV=8 AUTHDBG/59 RPT=302 16:45:40.920 08/06/2002 5
(AUTH_BindServer(9a03fcc, 0, 0
```

```
SEV=9 AUTHDBG/69 RPT=302 16:45:40.920 08/06/2002 6
Auth Server 18cdfa4 has been bound to ACB 9a03fcc, sessions = 1
```

```
SEV=8 AUTHDBG/65 RPT=302 16:45:40.920 08/06/2002 7
(AUTH_CreateTimer(9a03fcc, 0, 0
```

```
SEV=9 AUTHDBG/72 RPT=302 16:45:40.920 08/06/2002 8
Reply timer created: handle = 5A0C001B
```

```
SEV=8 AUTHDBG/61 RPT=302 16:45:40.920 08/06/2002 9
(AUTH_BuildMsg(9a03fcc, 0, 0
```

```
SEV=8 AUTHDBG/64 RPT=302 16:45:40.920 08/06/2002 10
```

(AUTH\_StartTimer(9a03fcc, 0, 0

SEV=9 AUTHDBG/73 RPT=302 16:45:40.920 08/06/2002 11  
Reply timer started: handle = 5A0C001B, timestamp = 355273988, timeout = 30000

SEV=8 AUTHDBG/62 RPT=302 16:45:40.920 08/06/2002 12  
(AUTH\_SndRequest(9a03fcc, 0, 0

SEV=8 AUTHDBG/50 RPT=477 16:45:40.920 08/06/2002 13  
(IntDB\_Decode(62fd1a8, 146

SEV=10 AUTHDECODE/12 RPT=1 16:45:40.920 08/06/2002 14  
IntDB: Type = 1 (0x01) User-Name

SEV=10 AUTHDECODE/13 RPT=1 16:45:40.920 08/06/2002 15  
(IntDB: Length = 11 (0x0B

SEV=10 AUTHDECODE/14 RPT=1 16:45:40.920 08/06/2002 16  
= (IntDB: Value (String

SEV=10 AUTHDECODE/0 RPT=1 16:45:40.920 08/06/2002 17  
77696E64 6F777375 736572 windowsuser :0000

SEV=10 AUTHDECODE/12 RPT=2 16:45:40.920 08/06/2002 18  
IntDB: Type = 5 (0x05) NAS-Port

SEV=10 AUTHDECODE/13 RPT=2 16:45:40.920 08/06/2002 19  
(IntDB: Length = 4 (0x04

SEV=10 AUTHDECODE/15 RPT=1 16:45:40.920 08/06/2002 20  
(IntDB: Value (Integer) = 0 (0x0000

SEV=10 AUTHDECODE/12 RPT=3 16:45:40.920 08/06/2002 21  
IntDB: Type = 6 (0x06) Service-Type

SEV=10 AUTHDECODE/13 RPT=3 16:45:40.920 08/06/2002 22  
(IntDB: Length = 4 (0x04

SEV=10 AUTHDECODE/15 RPT=2 16:45:40.920 08/06/2002 23  
(IntDB: Value (Integer) = 2 (0x0002

SEV=10 AUTHDECODE/12 RPT=4 16:45:40.920 08/06/2002 24  
IntDB: Type = 7 (0x07) Framed-Protocol

SEV=10 AUTHDECODE/13 RPT=4 16:45:40.920 08/06/2002 25  
(IntDB: Length = 4 (0x04

SEV=10 AUTHDECODE/15 RPT=3 16:45:40.920 08/06/2002 26  
(IntDB: Value (Integer) = 1 (0x0001

SEV=10 AUTHDECODE/12 RPT=5 16:45:40.920 08/06/2002 27

IntDB: Type = 66 (0x42) Tunnel-Client-Endpoint

SEV=10 AUTHDECODE/13 RPT=5 16:45:40.920 08/06/2002 28  
(IntDB: Length = 12 (0x0C)

SEV=10 AUTHDECODE/14 RPT=2 16:45:40.920 08/06/2002 29  
= (IntDB: Value (String

SEV=10 AUTHDECODE/0 RPT=2 16:45:40.920 08/06/2002 30  
3137312E 36392E38 392E3930 171.69.89.90 :0000

SEV=10 AUTHDECODE/12 RPT=6 16:45:40.920 08/06/2002 31  
IntDB: Type = 4118 (0x1016) Authentication-Server-Type

SEV=10 AUTHDECODE/13 RPT=6 16:45:40.920 08/06/2002 32  
(IntDB: Length = 4 (0x04

SEV=10 AUTHDECODE/15 RPT=4 16:45:40.920 08/06/2002 33  
(IntDB: Value (Integer) = 5 (0x0005

SEV=8 AUTHDBG/47 RPT=477 16:45:40.920 08/06/2002 34  
(IntDB\_Xmt(9a03fcc

SEV=9 AUTHDBG/71 RPT=302 16:45:40.920 08/06/2002 35  
xmit\_cnt = 1

SEV=8 AUTHDBG/47 RPT=478 16:45:40.920 08/06/2002 36  
(IntDB\_Xmt(9a03fcc

SEV=8 AUTHDBG/49 RPT=239 16:45:41.020 08/06/2002 37  
(IntDB\_Match(9a03fcc, 62f1c4c

SEV=8 AUTHDBG/63 RPT=302 16:45:41.020 08/06/2002 38  
(AUTH\_RcvReply(9a03fcc, 0, 0

SEV=8 AUTHDBG/50 RPT=478 16:45:41.020 08/06/2002 39  
(IntDB\_Decode(62f1c4c, 170

SEV=10 AUTHDECODE/12 RPT=7 16:45:41.020 08/06/2002 40  
IntDB: Type = 1 (0x01) User-Name

SEV=10 AUTHDECODE/13 RPT=7 16:45:41.020 08/06/2002 41  
(IntDB: Length = 11 (0x0B

SEV=10 AUTHDECODE/14 RPT=3 16:45:41.020 08/06/2002 42  
= (IntDB: Value (String

SEV=10 AUTHDECODE/0 RPT=3 16:45:41.020 08/06/2002 43  
77696E64 6F777375 736572 windowsuser :0000

SEV=10 AUTHDECODE/12 RPT=8 16:45:41.020 08/06/2002 44  
IntDB: Type = 4109 (0x100D) IPSec-Authentication

SEV=10 AUTHDECODE/13 RPT=8 16:45:41.020 08/06/2002 45  
(IntDB: Length = 4 (0x04

SEV=10 AUTHDECODE/15 RPT=5 16:45:41.020 08/06/2002 46  
(IntDB: Value (Integer) = 6 (0x0006

SEV=10 AUTHDECODE/12 RPT=9 16:45:41.020 08/06/2002 47  
IntDB: Type = 4123 (0x101B) Split-Tunnel-Inclusion-List

SEV=10 AUTHDECODE/13 RPT=9 16:45:41.020 08/06/2002 48  
(IntDB: Length = 4 (0x04

SEV=10 AUTHDECODE/14 RPT=4 16:45:41.020 08/06/2002 49  
= (IntDB: Value (String

SEV=10 AUTHDECODE/0 RPT=4 16:45:41.020 08/06/2002 50  
test 74657374 :0000

SEV=10 AUTHDECODE/12 RPT=10 16:45:41.020 08/06/2002 51  
IntDB: Type = 4151 (0x1037) Split-Tunneling-Policy

SEV=10 AUTHDECODE/13 RPT=10 16:45:41.020 08/06/2002 52  
(IntDB: Length = 4 (0x04

SEV=10 AUTHDECODE/15 RPT=6 16:45:41.020 08/06/2002 53  
(IntDB: Value (Integer) = 1 (0x0001

SEV=8 AUTHDBG/48 RPT=239 16:45:41.020 08/06/2002 54  
(IntDB\_Rcv(9a03fcc

SEV=8 AUTHDBG/66 RPT=302 16:45:41.020 08/06/2002 55  
(AUTH\_DeleteTimer(9a03fcc, 0, 0

SEV=9 AUTHDBG/74 RPT=302 16:45:41.020 08/06/2002 56  
Reply timer stopped: handle = 5A0C001B, timestamp = 355273998

SEV=8 AUTHDBG/58 RPT=302 16:45:41.020 08/06/2002 57  
(AUTH\_Callback(9a03fcc, 0, 0

SEV=6 AUTH/41 RPT=218 171.69.89.90 16:45:41.020 08/06/2002 58  
,Authentication successful: handle = 102, server = Internal  
group = windowsuser

SEV=8 AUTHDBG/4 RPT=288 16:45:41.020 08/06/2002 59  
(AUTH\_GetAttrTable(102, 742a30

SEV=8 AUTHDBG/2 RPT=263 16:45:41.020 08/06/2002 60  
(AUTH\_Close(102

SEV=8 AUTHDBG/60 RPT=302 16:45:41.020 08/06/2002 61  
(AUTH\_UnbindServer(9a03fcc, 0, 0

SEV=9 AUTHDBG/70 RPT=302 16:45:41.020 08/06/2002 62  
Auth Server 18cdfa4 has been unbound from ACB 9a03fcc, sessions = 0

SEV=8 AUTHDBG/10 RPT=263 16:45:41.020 08/06/2002 63  
(AUTH\_Int\_FreeAuthCB(9a03fcc

SEV=7 AUTH/13 RPT=264 16:45:41.020 08/06/2002 64  
Authentication session closed: handle = 102

SEV=8 AUTHDBG/1 RPT=264 16:45:46.610 08/06/2002 65  
AUTH\_Open() returns 103

SEV=7 AUTH/12 RPT=265 16:45:46.610 08/06/2002 66  
Authentication session opened: handle = 103

SEV=8 AUTHDBG/3 RPT=303 16:45:46.610 08/06/2002 67  
(AUTH\_PutAttrTable(103, 7429b8

SEV=8 AUTHDBG/5 RPT=56 16:45:46.610 08/06/2002 68  
(AUTH\_Authenticate(103, 500a278, 4cad38

SEV=8 AUTHDBG/59 RPT=303 16:45:46.610 08/06/2002 69  
(AUTH\_BindServer(9aa46fc, 0, 0

```
SEV=9 AUTHDBG/69 RPT=303 16:45:46.610 08/06/2002 70
Auth Server 18cela4 has been bound to ACB 9aa46fc, sessions = 1

SEV=8 AUTHDBG/65 RPT=303 16:45:46.610 08/06/2002 71
(AUTH_CreateTimer(9aa46fc, 0, 0

SEV=9 AUTHDBG/72 RPT=303 16:45:46.610 08/06/2002 72
Reply timer created: handle = 5A0E0016

SEV=8 AUTHDBG/61 RPT=303 16:45:46.610 08/06/2002 73
(AUTH_BuildMsg(9aa46fc, 0, 0

SEV=8 AUTHDBG/27 RPT=64 16:45:46.610 08/06/2002 74
(Radius_Build(9aa46fc

SEV=8 AUTHDBG/64 RPT=303 16:45:46.610 08/06/2002 75
(AUTH_StartTimer(9aa46fc, 0, 0

SEV=9 AUTHDBG/73 RPT=303 16:45:46.610 08/06/2002 76
Reply timer started: handle = 5A0E0016, timestamp = 355274557, timeout = 4000

SEV=8 AUTHDBG/62 RPT=303 16:45:46.610 08/06/2002 77
(AUTH_SndRequest(9aa46fc, 0, 0

SEV=8 AUTHDBG/31 RPT=127 16:45:46.610 08/06/2002 78
(Radius_Decode(62f1c4c, 156

SEV=13 AUTHDECODE/0 RPT=5 16:45:46.610 08/06/2002 79
..0122009C 7F70A83B E37B9B27 31668A07 .".p.:.{'1f :0000
..1089C0A4 010A7670 6E757365 72310506 .....vpnuser1 :0010
..... 0000041C 06060000 00020706 00000001 :0020
..420E3137 312E3639 2E38392E 39301A18 B.171.69.89.90 :0030
%. ....0B12BE14 D10DA7ED 8A00FD25 ...7 00000137 :0040
..47B90956 3B191A3A 00000137 19340000 G..V;:...7.4 :0050
.....62B6A996 DD4962AE 05FA5AAF FDDA96A9 b....Ib...Z :0060
..>....>..... 3CA2008E A03CABCF 00000000 00000000 :0070
73FB28E0 D1560A01 D96AAE3B BFB6DD42 s(..V...j.;...B :0080
.....=$..... 0406AC10 AC243D06 00000005 :0090

SEV=10 AUTHDECODE/1 RPT=1 16:45:46.610 08/06/2002 89
(Radius: Code = 1 (0x01

SEV=10 AUTHDECODE/2 RPT=1 16:45:46.610 08/06/2002 90
(Radius: Identifier = 34 (0x22

SEV=10 AUTHDECODE/3 RPT=1 16:45:46.610 08/06/2002 91
(Radius: Length = 156 (0x009C

SEV=10 AUTHDECODE/4 RPT=1 16:45:46.610 08/06/2002 92
:Radius: Vector

SEV=10 AUTHDECODE/0 RPT=6 16:45:46.610 08/06/2002 93
.....7F70A83B E37B9B27 31668A07 1089C0A4 .p.:.{'1f :0000

SEV=10 AUTHDECODE/5 RPT=1 16:45:46.610 08/06/2002 94
Radius: Type = 1 (0x01) User-Name

SEV=10 AUTHDECODE/6 RPT=1 16:45:46.610 08/06/2002 95
(Radius: Length = 10 (0x0A

SEV=10 AUTHDECODE/7 RPT=1 16:45:46.610 08/06/2002 96
= (Radius: Value (String
```

```
SEV=10 AUTHDECODE/0 RPT=7 16:45:46.610 08/06/2002 97
76706E75 73657231                                vpnuser1 :0000

<SEV=10 AUTHDECODE/5 RPT=2 16:45:46.610 08/06/2002 98
Radius: Type = 5 (0x05) NAS-Port

SEV=10 AUTHDECODE/6 RPT=2 16:45:46.610 08/06/2002 99
(Radius: Length = 6 (0x06)

SEV=10 AUTHDECODE/11 RPT=1 16:45:46.610 08/06/2002 100
Radius: Value (Hex) = 0x41C

SEV=10 AUTHDECODE/5 RPT=3 16:45:46.610 08/06/2002 101
Radius: Type = 6 (0x06) Service-Type

SEV=10 AUTHDECODE/6 RPT=3 16:45:46.610 08/06/2002 102
(Radius: Length = 6 (0x06)

SEV=10 AUTHDECODE/11 RPT=2 16:45:46.610 08/06/2002 103
Radius: Value (Hex) = 0x2

SEV=10 AUTHDECODE/5 RPT=4 16:45:46.610 08/06/2002 104
Radius: Type = 7 (0x07) Framed-Protocol

SEV=10 AUTHDECODE/6 RPT=4 16:45:46.610 08/06/2002 105
(Radius: Length = 6 (0x06)

SEV=10 AUTHDECODE/11 RPT=3 16:45:46.610 08/06/2002 106
Radius: Value (Hex) = 0x1

SEV=10 AUTHDECODE/5 RPT=5 16:45:46.610 08/06/2002 107
Radius: Type = 66 (0x42) Tunnel-Client-Endpoint

SEV=10 AUTHDECODE/6 RPT=5 16:45:46.610 08/06/2002 108
(Radius: Length = 14 (0x0E)

SEV=10 AUTHDECODE/7 RPT=2 16:45:46.610 08/06/2002 109
= (Radius: Value (String)

SEV=10 AUTHDECODE/0 RPT=8 16:45:46.610 08/06/2002 110
3137312E 36392E38 392E3930                        171.69.89.90 :0000

SEV=10 AUTHDECODE/5 RPT=6 16:45:46.610 08/06/2002 111
Radius: Type = 26 (0x1A) Vendor-Specific

SEV=10 AUTHDECODE/6 RPT=6 16:45:46.610 08/06/2002 112
(Radius: Length = 24 (0x18)

SEV=10 AUTHDECODE/10 RPT=1 16:45:46.610 08/06/2002 113
(Radius: Vendor ID = 311 (0x00000137)

SEV=10 AUTHDECODE/5 RPT=7 16:45:46.610 08/06/2002 114
Radius: Type = 11 (0x0B) MS-CHAP-Challenge

SEV=10 AUTHDECODE/6 RPT=7 16:45:46.610 08/06/2002 115
(Radius: Length = 18 (0x12)

SEV=10 AUTHDECODE/7 RPT=3 16:45:46.610 08/06/2002 116
= (Radius: Value (String)

SEV=10 AUTHDECODE/0 RPT=9 16:45:46.610 08/06/2002 117
.:BE14D10D A7ED8A00 FD2547B9 09563B19           .....%G..V :0000

SEV=10 AUTHDECODE/5 RPT=8 16:45:46.610 08/06/2002 118
```

```

Radius: Type = 26 (0x1A) Vendor-Specific

SEV=10 AUTHDECODE/6 RPT=8 16:45:46.610 08/06/2002 119
(Radius: Length = 58 (0x3A)

SEV=10 AUTHDECODE/10 RPT=2 16:45:46.610 08/06/2002 120
(Radius: Vendor ID = 311 (0x00000137)

SEV=10 AUTHDECODE/5 RPT=9 16:45:46.610 08/06/2002 121
Radius: Type = 25 (0x19) MS-CHAP2-Response

SEV=10 AUTHDECODE/6 RPT=9 16:45:46.610 08/06/2002 122
(Radius: Length = 52 (0x34)

SEV=10 AUTHDECODE/7 RPT=4 16:45:46.610 08/06/2002 123
= (Radius: Value (String)

SEV=10 AUTHDECODE/0 RPT=10 16:45:46.610 08/06/2002 124
...000062B6 A996DD49 62AE05FA 5AAFFDDA .b...Ib...Z :0000
>....>..... 96A90000 00000000 00003CA2 008EA03C :0010
..;.ABCf73FB 28E0D156 0A01D96A AE3BBFB6 ..s(..V...j :0020
DD42 .B :0030

SEV=10 AUTHDECODE/5 RPT=10 16:45:46.620 08/06/2002 128
Radius: Type = 4 (0x04) NAS-IP-Address

SEV=10 AUTHDECODE/6 RPT=10 16:45:46.620 08/06/2002 129
(Radius: Length = 6 (0x06)

SEV=10 AUTHDECODE/9 RPT=1 16:45:46.620 08/06/2002 130
(Radius: Value (IP Address) = 172.16.172.36 (0xAC10AC24)

SEV=10 AUTHDECODE/5 RPT=11 16:45:46.620 08/06/2002 131
Radius: Type = 61 (0x3D) NAS-Port-Type

SEV=10 AUTHDECODE/6 RPT=11 16:45:46.620 08/06/2002 132
(Radius: Length = 6 (0x06)

SEV=10 AUTHDECODE/11 RPT=4 16:45:46.620 08/06/2002 133
Radius: Value (Hex) = 0x5

SEV=8 AUTHDBG/28 RPT=64 16:45:46.620 08/06/2002 134
(Radius_Xmt(9aa46fc)

SEV=9 AUTHDBG/71 RPT=303 16:45:46.620 08/06/2002 135
xmit_cnt = 1

SEV=8 AUTHDBG/30 RPT=64 16:45:46.710 08/06/2002 136
Radius_Match(9aa46fc, 5004a10), id = 0x22, rcvd = 0x22

SEV=8 AUTHDBG/63 RPT=303 16:45:46.710 08/06/2002 137
(AUTH_RcvReply(9aa46fc, 0, 0

SEV=8 AUTHDBG/31 RPT=128 16:45:46.710 08/06/2002 138
(Radius_Decode(5004a10, 42)

SEV=13 AUTHDECODE/0 RPT=11 16:45:46.710 08/06/2002 139
...0322002A CCDF6607 AB8B6D51 9B17CFE1 ."*.f...mQ :0000
6A11AE2E 1A160000 01370210 00453D36 j.....7...E=6 :0010
3D302056 3D33 48 R=0 V=3 34382052 :0020

SEV=10 AUTHDECODE/1 RPT=2 16:45:46.710 08/06/2002 142
(Radius: Code = 3 (0x03)

```

SEV=10 AUTHDECODE/2 RPT=2 16:45:46.710 08/06/2002 143  
(Radius: Identifier = 34 (0x22)

SEV=10 AUTHDECODE/3 RPT=2 16:45:46.710 08/06/2002 144  
(Radius: Length = 42 (0x002A)

SEV=10 AUTHDECODE/4 RPT=2 16:45:46.710 08/06/2002 145  
:Radius: Vector

SEV=10 AUTHDECODE/0 RPT=12 16:45:46.710 08/06/2002 146  
...CCDF6607 AB8B6D51 9B17CFE1 6A11AE2E ..f...mQ....j :0000

**SEV=10 AUTHDECODE/5 RPT=12 16:45:46.710 08/06/2002 147**  
**Radius: Type = 26 (0x1A) Vendor-Specific**

**SEV=10 AUTHDECODE/6 RPT=12 16:45:46.710 08/06/2002 148**  
**(Radius: Length = 22 (0x16)**

**SEV=10 AUTHDECODE/10 RPT=3 16:45:46.710 08/06/2002 149**  
**(Radius: Vendor ID = 311 (0x00000137**

**SEV=10 AUTHDECODE/5 RPT=13 16:45:46.710 08/06/2002 150**  
**Radius: Type = 2 (0x02) MS-CHAP-Error**

SEV=10 AUTHDECODE/6 RPT=13 16:45:46.710 08/06/2002 151  
(Radius: Length = 16 (0x10)

SEV=10 AUTHDECODE/7 RPT=5 16:45:46.710 08/06/2002 152  
= (Radius: Value (String

SEV=10 AUTHDECODE/0 RPT=13 16:45:46.710 08/06/2002 153  
00453D36 34382052 3D302056 3D33 .E=648 R=0 V=3 :0000

SEV=8 AUTHDBG/29 RPT=64 16:45:46.710 08/06/2002 154  
(Radius\_Rcv(9aa46fc

SEV=8 AUTHDBG/66 RPT=303 16:45:46.710 08/06/2002 155  
(AUTH\_DeleteTimer(9aa46fc, 0, 0

SEV=9 AUTHDBG/74 RPT=303 16:45:46.710 08/06/2002 156  
Reply timer stopped: handle = 5A0E0016, timestamp = 355274567

SEV=8 AUTHDBG/58 RPT=303 16:45:46.710 08/06/2002 157  
(AUTH\_Callback(9aa46fc, 0, 0

**SEV=3 AUTH/5 RPT=42 171.69.89.90 16:45:46.710 08/06/2002 158**  
**Authentication rejected: Reason = Password expired**  
**= handle = 103, server = 171.69.89.60, user = vpnuser1, domain**

SEV=8 AUTHDBG/4 RPT=289 16:45:46.710 08/06/2002 160  
(AUTH\_GetAttrTable(103, 743aa8

SEV=8 AUTHDBG/4 RPT=290 16:45:46.710 08/06/2002 161  
(AUTH\_GetAttrTable(103, 743ad8

SEV=8 AUTHDBG/60 RPT=303 16:45:46.710 08/06/2002 162  
(AUTH\_UnbindServer(9aa46fc, 0, 0

SEV=9 AUTHDBG/70 RPT=303 16:45:46.710 08/06/2002 163



Auth Server 18cela4 has been unbound from ACB 9aa46fc, sessions = 0

SEV=8 AUTHDBG/3 RPT=304 16:45:50.480 08/06/2002 164  
(AUTH\_PutAttrTable(103, 742898

SEV=8 AUTHDBG/5 RPT=57 16:45:50.480 08/06/2002 165  
(AUTH\_Authenticate(103, 500a278, 4cad38

SEV=8 AUTHDBG/59 RPT=304 16:45:50.480 08/06/2002 166  
(AUTH\_BindServer(9aa46fc, 0, 0

SEV=9 AUTHDBG/69 RPT=304 16:45:50.480 08/06/2002 167  
Auth Server 18cela4 has been bound to ACB 9aa46fc, sessions = 1

SEV=8 AUTHDBG/65 RPT=304 16:45:50.480 08/06/2002 168  
(AUTH\_CreateTimer(9aa46fc, 0, 0

SEV=9 AUTHDBG/72 RPT=304 16:45:50.480 08/06/2002 169  
Reply timer created: handle = 5A100016

SEV=8 AUTHDBG/61 RPT=304 16:45:50.480 08/06/2002 170  
(AUTH\_BuildMsg(9aa46fc, 0, 0

SEV=8 AUTHDBG/27 RPT=65 16:45:50.480 08/06/2002 171  
(Radius\_Build(9aa46fc

SEV=8 AUTHDBG/64 RPT=304 16:45:50.480 08/06/2002 172  
(AUTH\_StartTimer(9aa46fc, 0, 0

SEV=9 AUTHDBG/73 RPT=304 16:45:50.480 08/06/2002 173  
Reply timer started: handle = 5A100016, timestamp = 355274944, timeout = 4000

SEV=8 AUTHDBG/62 RPT=304 16:45:50.480 08/06/2002 174  
(AUTH\_SndRequest(9aa46fc, 0, 0

SEV=8 AUTHDBG/31 RPT=129 16:45:50.480 08/06/2002 175  
(Radius\_Decode(9a03ba8, 726

SEV=13 AUTHDECODE/0 RPT=14 16:45:50.480 08/06/2002 176  
.012302D6 E8317738 275469B7 A7D230C5 .#.l..w8'Ti... :0000  
..50CC8DE0 010A7670 6E757365 72310506 P.....vpuser1 :0010  
..... 0000041C 06060000 00020706 00000001 :0020  
..420E3137 312E3639 2E38392E 39301AFF B.171.69.89.90 :0030  
..06F90601 000164BF 9A72CBB1 ...7.....d..r 00000137 :0040  
..\$.FE1F1FFA 7D66A600 45BD9769 DD24BAAF ....}f..E..i :0050  
D68FCDF2 BA9F9B2C FABE2BCC 0D66CF62 .....+..f.b :0060  
..51F6E280 F37502AD 53E5D6FB 7648C8D7 Q....u..S...vH :0070  
.[68CCC00F D1B186C8 7217E6DB 7E455DB4 h.....r...~E :0080  
.....EAB2FE0C 2F09C25A 359F4DCA FE15B816 ....//..Z5.M :0090  
.00A0: 5B113D39 1101444C B8E85BE4 7BDD367F [.=9..DL..[.6  
....(.....00B0: 145D5786 38A3A8DC 8D07A029 911DC3D8 .]W.8

SEV=10 AUTHDECODE/1 RPT=3 16:45:50.480 08/06/2002 188  
(Radius: Code = 1 (0x01

SEV=10 AUTHDECODE/2 RPT=3 16:45:50.480 08/06/2002 189  
(Radius: Identifier = 35 (0x23

SEV=10 AUTHDECODE/3 RPT=3 16:45:50.480 08/06/2002 190  
(Radius: Length = 726 (0x02D6

SEV=10 AUTHDECODE/4 RPT=3 16:45:50.480 08/06/2002 191  
:Radius: Vector

SEV=10 AUTHDECODE/0 RPT=15 16:45:50.480 08/06/2002 192  
...E8317738 275469B7 A7D230C5 50CC8DE0 .1w8'Ti...0.P :0000

SEV=10 AUTHDECODE/5 RPT=14 16:45:50.480 08/06/2002 193  
Radius: Type = 1 (0x01) User-Name

SEV=10 AUTHDECODE/6 RPT=14 16:45:50.480 08/06/2002 194  
(Radius: Length = 10 (0x0A)

SEV=10 AUTHDECODE/7 RPT=6 16:45:50.480 08/06/2002 195  
= (Radius: Value (String

SEV=10 AUTHDECODE/0 RPT=16 16:45:50.480 08/06/2002 196  
76706E75 73657231 vpnuser1 :0000

SEV=10 AUTHDECODE/5 RPT=15 16:45:50.480 08/06/2002 197  
Radius: Type = 5 (0x05) NAS-Port

SEV=10 AUTHDECODE/6 RPT=15 16:45:50.480 08/06/2002 198  
(Radius: Length = 6 (0x06)

SEV=10 AUTHDECODE/11 RPT=5 16:45:50.480 08/06/2002 199  
Radius: Value (Hex) = 0x41C

SEV=10 AUTHDECODE/5 RPT=16 16:45:50.480 08/06/2002 200  
Radius: Type = 6 (0x06) Service-Type

SEV=10 AUTHDECODE/6 RPT=16 16:45:50.480 08/06/2002 201  
(Radius: Length = 6 (0x06)

SEV=10 AUTHDECODE/11 RPT=6 16:45:50.480 08/06/2002 202  
Radius: Value (Hex) = 0x2

SEV=10 AUTHDECODE/5 RPT=17 16:45:50.480 08/06/2002 203  
Radius: Type = 7 (0x07) Framed-Protocol

SEV=10 AUTHDECODE/6 RPT=17 16:45:50.480 08/06/2002 204  
(Radius: Length = 6 (0x06)

SEV=10 AUTHDECODE/11 RPT=7 16:45:50.480 08/06/2002 205  
Radius: Value (Hex) = 0x1

SEV=10 AUTHDECODE/5 RPT=18 16:45:50.480 08/06/2002 206  
Radius: Type = 66 (0x42) Tunnel-Client-Endpoint

SEV=10 AUTHDECODE/6 RPT=18 16:45:50.480 08/06/2002 207  
(Radius: Length = 14 (0x0E)

SEV=10 AUTHDECODE/7 RPT=7 16:45:50.480 08/06/2002 208  
= (Radius: Value (String

SEV=10 AUTHDECODE/0 RPT=17 16:45:50.480 08/06/2002 209  
3137312E 36392E38 392E3930 171.69.89.90 :0000

**SEV=10 AUTHDECODE/5 RPT=19 16:45:50.480 08/06/2002 210**  
**Radius: Type = 26 (0x1A) Vendor-Specific**

**SEV=10 AUTHDECODE/6 RPT=19 16:45:50.480 08/06/2002 211**  
**(Radius: Length = 255 (0xFF**

**SEV=10 AUTHDECODE/10 RPT=4 16:45:50.480 08/06/2002 212**  
**(Radius: Vendor ID = 311 (0x00000137**

**SEV=10 AUTHDECODE/5 RPT=20 16:45:50.480 08/06/2002 213**

**Radius: Type = 6 (0x06) MS-CHAP-NT-Enc-PW**

SEV=10 AUTHDECODE/6 RPT=20 16:45:50.480 08/06/2002 214  
(Radius: Length = 249 (0xF9)

SEV=10 AUTHDECODE/7 RPT=8 16:45:50.480 08/06/2002 215  
= (Radius: Value (String

SEV=10 AUTHDECODE/0 RPT=18 16:45:50.480 08/06/2002 216  
64BF9A72 CBB1FE1F 1FFA7D66 ....d..r.....}f 06010001 :0000  
.....\$.A60045BD 9769DD24 BAAFD68F CDF2BA9F ..E..i :0010  
9B2CFABE 2BCC0D66 CF6251F6 E280F375 ,...+.f.bQ...u :0020  
.....02AD53E5 D6FB7648 C8D768CC C00FD1B1 ..S...vH..h :0030  
./.....[86C87217 E6DB7E45 5DB4EAB2 FE0C2F09 ..r...~E :0040  
..C25A359F 4DCAFE15 B8165B11 3D391101 .Z5.M.....[.=9 :0050  
..444CB8E8 5BE47BDD 367F145D 578638A3 DL..[.{.6..}W.8 :0060  
.....A8DC8D07 A029911D C3D839D6 12880394 .....).9 :0070  
.#.BFCB86DA F5DE706B 616FA285 6B0F2312 .....pkao..k :0080  
5BA566D2 153D9A88 D970EAA7 EEAE2453 [.f..=...p....\$S :0090  
..?...00A0: DC28ECC7 C0B4F4C4 8BF04712 D68F3FCA .(.....G  
|.00B0: 89F11100 3FA76070 2EE793E9 4EE10B7C ....?.`p....N

**SEV=10 AUTHDECODE/5 RPT=21 16:45:50.480 08/06/2002 228**  
**Radius: Type = 26 (0x1A) Vendor-Specific**

**SEV=10 AUTHDECODE/6 RPT=21 16:45:50.480 08/06/2002 229**  
**(Radius: Length = 255 (0xFF**

**SEV=10 AUTHDECODE/10 RPT=5 16:45:50.480 08/06/2002 230**  
**(Radius: Vendor ID = 311 (0x00000137**

**SEV=10 AUTHDECODE/5 RPT=22 16:45:50.480 08/06/2002 231**  
**Radius: Type = 6 (0x06) MS-CHAP-NT-Enc-PW**

SEV=10 AUTHDECODE/6 RPT=22 16:45:50.480 08/06/2002 232  
(Radius: Length = 249 (0xF9)

SEV=10 AUTHDECODE/7 RPT=9 16:45:50.480 08/06/2002 233  
= (Radius: Value (String

SEV=10 AUTHDECODE/0 RPT=19 16:45:50.480 08/06/2002 234  
.....424D1964 E0FCDA8 DE020FCF ....BM.d 06010002 :0000  
..141848C6 3080EE8C 098DCB0E C5FD7AD0 ..H.0.....z :0010  
\${771E909B 78C84AA0 89CEAA5E D2727D24 w...x.J....^r :0020  
^...67D195F9 85F8602E AAB5548 D0F29B5E g.....`...UH :0030  
..E16380AF 941D7DC0 BD842962 5673BDBD .c....}...bVs :0040  
..E8818EBE 271C7B4F 9E52A02F 8A6AAA8E ....'.{O.R./j :0050  
D3E142B7 C60FDCE9 AECC4F81 7B926351 ..B.....O.{cQ :0060  
..375530C5 F8BFD23C 5E737129 4164C119 7U0....<^sq)Ad :0070  
.....4BF7C116 4EB4F82C 5FC2639E 2EAB8DD9 K...N.,\_c :0080  
.....8DD129AC 84B21D0F 96E11B94 BBB78214 :0090  
.(.&..00A0: B2CED1D2 1758E20C 8462F884 26C3292E .....X...b  
..00B0: D4BAC7F6 7812C981 B5309BE5 509877E5 ....x....0..P.w

**SEV=10 AUTHDECODE/5 RPT=23 16:45:50.480 08/06/2002 246**  
**Radius: Type = 26 (0x1A) Vendor-Specific**

**SEV=10 AUTHDECODE/6 RPT=23 16:45:50.480 08/06/2002 247**  
**(Radius: Length = 42 (0x2A**

**SEV=10 AUTHDECODE/10 RPT=6 16:45:50.480 08/06/2002 248**  
**(Radius: Vendor ID = 311 (0x00000137**

**SEV=10 AUTHDECODE/5 RPT=24 16:45:50.480 08/06/2002 249**

**Radius: Type = 6 (0x06) MS-CHAP-NT-Enc-PW**

SEV=10 AUTHDECODE/6 RPT=24 16:45:50.480 08/06/2002 250  
(Radius: Length = 36 (0x24)

SEV=10 AUTHDECODE/7 RPT=10 16:45:50.480 08/06/2002 251  
= (Radius: Value (String

SEV=10 AUTHDECODE/0 RPT=20 16:45:50.480 08/06/2002 252  
.47FD5D0E 1840AC0A F345102C ....G.]..@...E 06010003 :0000  
..\$ED6971DC 1F5CB1D7 609C5101 4724A804 .iq..\..\Q.G :0010  
.. .. 9B9C :0020

SEV=10 AUTHDECODE/5 RPT=25 16:45:50.480 08/06/2002 255  
Radius: Type = 26 (0x1A) Vendor-Specific

SEV=10 AUTHDECODE/6 RPT=25 16:45:50.480 08/06/2002 256  
(Radius: Length = 24 (0x18)

SEV=10 AUTHDECODE/10 RPT=7 16:45:50.480 08/06/2002 257  
(Radius: Vendor ID = 311 (0x00000137

SEV=10 AUTHDECODE/5 RPT=26 16:45:50.480 08/06/2002 258  
Radius: Type = 11 (0x0B) MS-CHAP-Challenge

SEV=10 AUTHDECODE/6 RPT=26 16:45:50.480 08/06/2002 259  
(Radius: Length = 18 (0x12)

SEV=10 AUTHDECODE/7 RPT=11 16:45:50.480 08/06/2002 260  
= (Radius: Value (String

SEV=10 AUTHDECODE/0 RPT=21 16:45:50.480 08/06/2002 261  
..A7129F8C 8F87FA68 3D3D0A73 E70E3AB0 .....h==.s :0000

**SEV=10 AUTHDECODE/5 RPT=27 16:45:50.480 08/06/2002 262**  
**Radius: Type = 26 (0x1A) Vendor-Specific**

**SEV=10 AUTHDECODE/6 RPT=27 16:45:50.480 08/06/2002 263**  
**(Radius: Length = 76 (0x4C**

**SEV=10 AUTHDECODE/10 RPT=8 16:45:50.480 08/06/2002 264**  
**(Radius: Vendor ID = 311 (0x00000137**

**SEV=10 AUTHDECODE/5 RPT=28 16:45:50.480 08/06/2002 265**  
**Radius: Type = 27 (0x1B) MS-CHAP2-CPW**

SEV=10 AUTHDECODE/6 RPT=28 16:45:50.480 08/06/2002 266  
(Radius: Length = 70 (0x46)

SEV=10 AUTHDECODE/7 RPT=12 16:45:50.480 08/06/2002 267  
= (Radius: Value (String

SEV=10 AUTHDECODE/0 RPT=22 16:45:50.480 08/06/2002 268  
.07014E5D FC26F8E9 2F90A59B C04963DA ..N].&../....Ic :0000  
...048662B6 A996DD49 62AE05FA 5AAFFDDA ..b....Ib...Z :0010  
...96A90000 00000000 0000EF4A 06BB0405 .....J :0020  
..A003F44A F8B81E05 B22506A4 6259979C ...J.....%.bY :0030  
..5F510000 ..\_Q :0040

SEV=10 AUTHDECODE/5 RPT=29 16:45:50.480 08/06/2002 273  
Radius: Type = 4 (0x04) NAS-IP-Address

SEV=10 AUTHDECODE/6 RPT=29 16:45:50.480 08/06/2002 274  
(Radius: Length = 6 (0x06)

```
SEV=10 AUTHDECODE/9 RPT=2 16:45:50.490 08/06/2002 275
(Radius: Value (IP Address) = 172.16.172.36 (0xAC10AC24

SEV=10 AUTHDECODE/5 RPT=30 16:45:50.490 08/06/2002 276
      Radius: Type = 61 (0x3D) NAS-Port-Type

SEV=10 AUTHDECODE/6 RPT=30 16:45:50.490 08/06/2002 277
      (Radius: Length = 6 (0x06

SEV=10 AUTHDECODE/11 RPT=8 16:45:50.490 08/06/2002 278
      Radius: Value (Hex) = 0x5

SEV=8 AUTHDBG/28 RPT=65 16:45:50.490 08/06/2002 279
      (Radius_Xmt(9aa46fc

SEV=9 AUTHDBG/71 RPT=304 16:45:50.490 08/06/2002 280
      xmit_cnt = 1

SEV=8 AUTHDBG/30 RPT=65 16:45:50.680 08/06/2002 281
Radius_Match(9aa46fc, 71e7df4), id = 0x23, rcvd = 0x23

SEV=8 AUTHDBG/63 RPT=304 16:45:50.680 08/06/2002 282
(AUTH_RcvReply(9aa46fc, 0, 0

SEV=8 AUTHDBG/31 RPT=130 16:45:50.680 08/06/2002 283
      (Radius_Decode(71e7df4, 213

SEV=13 AUTHDECODE/0 RPT=23 16:45:50.680 08/06/2002 284
.022300D5 EF3B5E72 2E31AF7C 7D305207      .#...;^r.1.|}0R :0000
.....27ADA143 07060000 00010606 00000002      '..C :0010
>AB45593C      . I .....7...EY 01370001 05160000 19204920 :0020
#.....01C2037B 9CB17432 00000000 00000023      ...{..t2 :0030
.1A2A0000 01371124 80293506 D58538BE      .*...7.$.)5...8 :0040
93D9BB03 17133616 C55D4C6F CE5D8848      .....6..]Lo.]H :0050
82BAB54B DF490416 84271A2A 00000137      ...K.I...'*.7 :0060
.1024802A F7F3D930 56008345 580C49D5      .$.*...0V..EX.I :0070
..414E8B6F 4FABD2EB 65A99BB3 2032E3DB      AN.oO...e... 2 :0080
792C0750 1A330000 01371A2D 01533D33      y,.P.3...7.-.S=3 :0090
00A0: 37333630 41343233 44384145 42423132      7360A423D8AE8B12
00B0: 33324239 36413545 36433741 45443938      32B96A5E6C7AED98

SEV=10 AUTHDECODE/1 RPT=4 16:45:50.680 08/06/2002 296
      (Radius: Code = 2 (0x02

SEV=10 AUTHDECODE/2 RPT=4 16:45:50.680 08/06/2002 297
      (Radius: Identifier = 35 (0x23

SEV=10 AUTHDECODE/3 RPT=4 16:45:50.680 08/06/2002 298
      (Radius: Length = 213 (0x00D5

SEV=10 AUTHDECODE/4 RPT=4 16:45:50.680 08/06/2002 299
      :Radius: Vector

SEV=10 AUTHDECODE/0 RPT=24 16:45:50.680 08/06/2002 300
EF3B5E72 2E31AF7C 7D305207 27ADA143      .;^r.1.|}0R.'..C :0000

SEV=10 AUTHDECODE/5 RPT=31 16:45:50.680 08/06/2002 301
      Radius: Type = 7 (0x07) Framed-Protocol

SEV=10 AUTHDECODE/6 RPT=31 16:45:50.680 08/06/2002 302
      (Radius: Length = 6 (0x06

SEV=10 AUTHDECODE/11 RPT=9 16:45:50.680 08/06/2002 303
```

Radius: Value (Hex) = 0x1

SEV=10 AUTHDECODE/5 RPT=32 16:45:50.680 08/06/2002 304  
Radius: Type = 6 (0x06) Service-Type

SEV=10 AUTHDECODE/6 RPT=32 16:45:50.680 08/06/2002 305  
(Radius: Length = 6 (0x06)

SEV=10 AUTHDECODE/11 RPT=10 16:45:50.680 08/06/2002 306  
Radius: Value (Hex) = 0x2

SEV=10 AUTHDECODE/5 RPT=33 16:45:50.680 08/06/2002 307  
Radius: Type = 25 (0x19) Class

SEV=10 AUTHDECODE/6 RPT=33 16:45:50.680 08/06/2002 308  
(Radius: Length = 32 (0x20)

SEV=10 AUTHDECODE/7 RPT=13 16:45:50.680 08/06/2002 309  
= (Radius: Value (String

SEV=10 AUTHDECODE/0 RPT=25 16:45:50.680 08/06/2002 310  
..>0001AB45 593C01C2 I .....7...EY 00000137 49200516 :0000  
#.037B9CB1 74320000 00000000 0023 .{..t2 :0010

SEV=10 AUTHDECODE/5 RPT=34 16:45:50.680 08/06/2002 312  
Radius: Type = 26 (0x1A) Vendor-Specific

SEV=10 AUTHDECODE/6 RPT=34 16:45:50.680 08/06/2002 313  
(Radius: Length = 42 (0x2A)

SEV=10 AUTHDECODE/10 RPT=9 16:45:50.680 08/06/2002 314  
(Radius: Vendor ID = 311 (0x00000137

SEV=10 AUTHDECODE/5 RPT=35 16:45:50.680 08/06/2002 315  
Radius: Type = 17 (0x11) MS-MPPE-Recv-Key

SEV=10 AUTHDECODE/6 RPT=35 16:45:50.680 08/06/2002 316  
(Radius: Length = 36 (0x24)

SEV=10 AUTHDECODE/7 RPT=14 16:45:50.680 08/06/2002 317  
= (Radius: Value (String

SEV=10 AUTHDECODE/0 RPT=26 16:45:50.680 08/06/2002 318  
.D58538BE 93D9BB03 17133616 .)5...8.....6 80293506 :0000  
..C55D4C6F CE5D8848 82BAB54B DF490416 .]Lo.]H...K.I :0010  
' . 8427 :0020

SEV=10 AUTHDECODE/5 RPT=36 16:45:50.680 08/06/2002 321  
Radius: Type = 26 (0x1A) Vendor-Specific

SEV=10 AUTHDECODE/6 RPT=36 16:45:50.680 08/06/2002 322  
(Radius: Length = 42 (0x2A)

SEV=10 AUTHDECODE/10 RPT=10 16:45:50.680 08/06/2002 323  
(Radius: Vendor ID = 311 (0x00000137

SEV=10 AUTHDECODE/5 RPT=37 16:45:50.680 08/06/2002 324  
Radius: Type = 16 (0x10) MS-MPPE-Send-Key

SEV=10 AUTHDECODE/6 RPT=37 16:45:50.680 08/06/2002 325  
(Radius: Length = 36 (0x24)

SEV=10 AUTHDECODE/7 RPT=15 16:45:50.680 08/06/2002 326  
= (Radius: Value (String

SEV=10 AUTHDECODE/0 RPT=27 16:45:50.680 08/06/2002 327  
802AF7F3 D9305600 8345580C 49D5414E .\*. .0V..EX.I.AN :0000  
,8B6F4FAB D2EB65A9 9BB32032 E3DB792C .oO...e... 2..y :0010  
P. 0750 :0020

SEV=10 AUTHDECODE/5 RPT=38 16:45:50.680 08/06/2002 330  
Radius: Type = 26 (0x1A) Vendor-Specific

SEV=10 AUTHDECODE/6 RPT=38 16:45:50.680 08/06/2002 331  
(Radius: Length = 51 (0x33)

**SEV=10 AUTHDECODE/10 RPT=11 16:45:50.680 08/06/2002 332**  
**(Radius: Vendor ID = 311 (0x00000137**

**SEV=10 AUTHDECODE/5 RPT=39 16:45:50.680 08/06/2002 333**  
**Radius: Type = 26 (0x1A) MS-CHAP2-Success**

SEV=10 AUTHDECODE/6 RPT=39 16:45:50.680 08/06/2002 334  
(Radius: Length = 45 (0x2D)

SEV=10 AUTHDECODE/7 RPT=16 16:45:50.680 08/06/2002 335  
= (Radius: Value (String

SEV=10 AUTHDECODE/0 RPT=28 16:45:50.680 08/06/2002 336  
01533D33 37333630 41343233 44384145 .S=37360A423D8AE :0000  
BB1232B96A5E6C7A 36433741 36413545 33324239 42423132 :0010  
ED98E18AE02 453032 45313841 45443938 :0020

SEV=10 AUTHDECODE/5 RPT=40 16:45:50.680 08/06/2002 339  
Radius: Type = 26 (0x1A) Vendor-Specific

SEV=10 AUTHDECODE/6 RPT=40 16:45:50.680 08/06/2002 340  
(Radius: Length = 14 (0x0E)

SEV=10 AUTHDECODE/10 RPT=12 16:45:50.680 08/06/2002 341  
(Radius: Vendor ID = 311 (0x00000137

SEV=10 AUTHDECODE/5 RPT=41 16:45:50.680 08/06/2002 342  
Radius: Type = 10 (0x0A) Unknown

SEV=10 AUTHDECODE/6 RPT=41 16:45:50.680 08/06/2002 343  
(Radius: Length = 8 (0x08)

SEV=8 AUTHDBG/29 RPT=65 16:45:50.680 08/06/2002 344  
(Radius\_Rcv(9aa46fc

SEV=9 AUTHDBG/32 RPT=8 16:45:50.680 08/06/2002 345  
Radius: Discarding unknown Vendor Specific Attribute: vid = 311, type = 10

SEV=8 AUTHDBG/66 RPT=304 16:45:50.680 08/06/2002 346  
(AUTH\_DeleteTimer(9aa46fc, 0, 0

SEV=9 AUTHDBG/74 RPT=304 16:45:50.680 08/06/2002 347  
Reply timer stopped: handle = 5A100016, timestamp = 355274964

SEV=8 AUTHDBG/58 RPT=304 16:45:50.680 08/06/2002 348  
(AUTH\_Callback(9aa46fc, 0, 0

**SEV=6 AUTH/4 RPT=18 171.69.89.90 16:45:50.680 08/06/2002 349**  
**,Authentication successful: handle = 103, server = 171.69.89.60**  
**user = vpnuser1**

SEV=8 AUTHDBG/3 RPT=305 16:45:50.680 08/06/2002 350

```
(AUTH_PutAttrTable(103, 19bfc54

SEV=8 AUTHDBG/60 RPT=304 16:45:50.680 08/06/2002 351
(AUTH_UnbindServer(9aa46fc, 0, 0

SEV=9 AUTHDBG/70 RPT=304 16:45:50.680 08/06/2002 352
Auth Server 18cela4 has been unbound from ACB 9aa46fc, sessions = 0

SEV=8 AUTHDBG/59 RPT=305 16:45:50.680 08/06/2002 353
(AUTH_BindServer(9aa46fc, 0, 0

SEV=9 AUTHDBG/69 RPT=305 16:45:50.680 08/06/2002 354
Auth Server 18cdfa4 has been bound to ACB 9aa46fc, sessions = 1

SEV=8 AUTHDBG/65 RPT=305 16:45:50.680 08/06/2002 355
(AUTH_CreateTimer(9aa46fc, 0, 0

SEV=9 AUTHDBG/72 RPT=305 16:45:50.680 08/06/2002 356
Reply timer created: handle = 5A110016

<SEV=8 AUTHDBG/61 RPT=305 16:45:50.680 08/06/2002 357
<(AUTH_BuildMsg(9aa46fc, 0, 0

SEV=8 AUTHDBG/64 RPT=305 16:45:50.680 08/06/2002 358
(AUTH_StartTimer(9aa46fc, 0, 0

SEV=9 AUTHDBG/73 RPT=305 16:45:50.680 08/06/2002 359
Reply timer started: handle = 5A110016, timestamp = 355274964, timeout = 30000

SEV=8 AUTHDBG/62 RPT=305 16:45:50.680 08/06/2002 360
<(AUTH_SndRequest(9aa46fc, 0, 0

SEV=8 AUTHDBG/50 RPT=479 16:45:50.680 08/06/2002 361
(IntDB_Decode(2ea1004, 57

SEV=10 AUTHDECODE/12 RPT=11 16:45:50.680 08/06/2002 362
IntDB: Type = 1 (0x01) User-Name

SEV=10 AUTHDECODE/13 RPT=11 16:45:50.680 08/06/2002 363
(IntDB: Length = 11 (0x0B

SEV=10 AUTHDECODE/14 RPT=5 16:45:50.680 08/06/2002 364
= (IntDB: Value (String

SEV=10 AUTHDECODE/0 RPT=29 16:45:50.680 08/06/2002 365
77696E64 6F777375 736572 windowsuser :0000

SEV=8 AUTHDBG/47 RPT=479 16:45:50.680 08/06/2002 366
(IntDB_Xmt(9aa46fc

SEV=9 AUTHDBG/71 RPT=305 16:45:50.680 08/06/2002 367
xmit_cnt = 1

SEV=8 AUTHDBG/47 RPT=480 16:45:50.680 08/06/2002 368
(IntDB_Xmt(9aa46fc

SEV=8 AUTHDBG/49 RPT=240 16:45:50.780 08/06/2002 369
(IntDB_Match(9aa46fc, 62f1c4c

SEV=8 AUTHDBG/63 RPT=305 16:45:50.780 08/06/2002 370
(AUTH_RcvReply(9aa46fc, 0, 0

SEV=8 AUTHDBG/50 RPT=480 16:45:50.780 08/06/2002 371
(IntDB_Decode(62f1c4c, 170
```



SEV=10 AUTHDECODE/12 RPT=12 16:45:50.780 08/06/2002 372  
IntDB: Type = 1 (0x01) User-Name

SEV=10 AUTHDECODE/13 RPT=12 16:45:50.780 08/06/2002 373  
(IntDB: Length = 11 (0x0B)

SEV=10 AUTHDECODE/14 RPT=6 16:45:50.780 08/06/2002 374  
= (IntDB: Value (String

SEV=10 AUTHDECODE/0 RPT=30 16:45:50.780 08/06/2002 375  
77696E64 6F777375 736572 windowsuser :0000

SEV=10 AUTHDECODE/12 RPT=13 16:45:50.780 08/06/2002 376  
IntDB: Type = 4109 (0x100D) IPSec-Authentication

SEV=10 AUTHDECODE/13 RPT=13 16:45:50.780 08/06/2002 377  
(IntDB: Length = 4 (0x04

SEV=10 AUTHDECODE/15 RPT=7 16:45:50.780 08/06/2002 378  
(IntDB: Value (Integer) = 6 (0x0006

SEV=10 AUTHDECODE/12 RPT=14 16:45:50.780 08/06/2002 379  
IntDB: Type = 4123 (0x101B) Split-Tunnel-Inclusion-List

SEV=10 AUTHDECODE/13 RPT=14 16:45:50.780 08/06/2002 380  
(IntDB: Length = 4 (0x04

SEV=10 AUTHDECODE/14 RPT=7 16:45:50.780 08/06/2002 381  
= (IntDB: Value (String

SEV=10 AUTHDECODE/0 RPT=31 16:45:50.780 08/06/2002 382  
test 74657374 :0000

SEV=10 AUTHDECODE/12 RPT=15 16:45:50.780 08/06/2002 383  
IntDB: Type = 4151 (0x1037) Split-Tunneling-Policy

SEV=10 AUTHDECODE/13 RPT=15 16:45:50.780 08/06/2002 384  
(IntDB: Length = 4 (0x04

SEV=10 AUTHDECODE/15 RPT=8 16:45:50.780 08/06/2002 385  
(IntDB: Value (Integer) = 1 (0x0001

SEV=8 AUTHDBG/48 RPT=240 16:45:50.780 08/06/2002 386  
(IntDB\_Rcv(9aa46fc

SEV=8 AUTHDBG/66 RPT=305 16:45:50.780 08/06/2002 387  
(AUTH\_DeleteTimer(9aa46fc, 0, 0

SEV=9 AUTHDBG/74 RPT=305 16:45:50.780 08/06/2002 388  
Reply timer stopped: handle = 5A110016, timestamp = 355274974

SEV=8 AUTHDBG/58 RPT=305 16:45:50.780 08/06/2002 389  
(AUTH\_Callback(9aa46fc, 0, 0

SEV=6 AUTH/41 RPT=219 171.69.89.90 16:45:50.780 08/06/2002 390  
,Authentication successful: handle = 103, server = Internal  
group = windowsuser

SEV=8 AUTHDBG/3 RPT=306 16:45:50.780 08/06/2002 391  
(AUTH\_PutAttrTable(103, 19bfc54

SEV=8 AUTHDBG/60 RPT=305 16:45:50.780 08/06/2002 392  
(AUTH\_UnbindServer(9aa46fc, 0, 0

```
SEV=9 AUTHDBG/70 RPT=305 16:45:50.780 08/06/2002 393
Auth Server 18cdfa4 has been unbound from ACB 9aa46fc, sessions = 0

SEV=8 AUTHDBG/59 RPT=306 16:45:50.780 08/06/2002 394
(AUTH_BindServer(9aa46fc, 0, 0

SEV=9 AUTHDBG/69 RPT=306 16:45:50.780 08/06/2002 395
Auth Server 18cdfa4 has been bound to ACB 9aa46fc, sessions = 1

SEV=8 AUTHDBG/65 RPT=306 16:45:50.780 08/06/2002 396
(AUTH_CreateTimer(9aa46fc, 0, 0

SEV=9 AUTHDBG/72 RPT=306 16:45:50.780 08/06/2002 397
Reply timer created: handle = 5A120016

SEV=8 AUTHDBG/61 RPT=306 16:45:50.780 08/06/2002 398
(AUTH_BuildMsg(9aa46fc, 0, 0

SEV=8 AUTHDBG/64 RPT=306 16:45:50.780 08/06/2002 399
(AUTH_StartTimer(9aa46fc, 0, 0

SEV=9 AUTHDBG/73 RPT=306 16:45:50.780 08/06/2002 400
Reply timer started: handle = 5A120016, timestamp = 355274974, timeout = 30000

SEV=8 AUTHDBG/62 RPT=306 16:45:50.780 08/06/2002 401
(AUTH_SndRequest(9aa46fc, 0, 0

SEV=8 AUTHDBG/50 RPT=481 16:45:50.780 08/06/2002 402
(IntDB_Decode(2e8aa34, 57

SEV=10 AUTHDECODE/12 RPT=16 16:45:50.780 08/06/2002 403
IntDB: Type = 1 (0x01) User-Name

SEV=10 AUTHDECODE/13 RPT=16 16:45:50.780 08/06/2002 404
(IntDB: Length = 11 (0x0B

SEV=10 AUTHDECODE/14 RPT=8 16:45:50.780 08/06/2002 405
= (IntDB: Value (String

SEV=10 AUTHDECODE/0 RPT=32 16:45:50.780 08/06/2002 406
77696E64 6F777375 736572 windowsuser :0000

SEV=8 AUTHDBG/47 RPT=481 16:45:50.780 08/06/2002 407
(IntDB_Xmt(9aa46fc

SEV=9 AUTHDBG/71 RPT=306 16:45:50.780 08/06/2002 408
xmit_cnt = 1

SEV=8 AUTHDBG/47 RPT=482 16:45:50.780 08/06/2002 409
(IntDB_Xmt(9aa46fc

SEV=8 AUTHDBG/49 RPT=241 16:45:50.880 08/06/2002 410
(IntDB_Match(9aa46fc, 62fd1a8

SEV=8 AUTHDBG/63 RPT=306 16:45:50.880 08/06/2002 411
(AUTH_RcvReply(9aa46fc, 0, 0

SEV=8 AUTHDBG/50 RPT=482 16:45:50.880 08/06/2002 412
(IntDB_Decode(62fd1a8, 170

SEV=10 AUTHDECODE/12 RPT=17 16:45:50.880 08/06/2002 413
IntDB: Type = 1 (0x01) User-Name
```

SEV=10 AUTHDECODE/13 RPT=17 16:45:50.880 08/06/2002 414  
(IntDB: Length = 11 (0x0B)

SEV=10 AUTHDECODE/14 RPT=9 16:45:50.880 08/06/2002 415  
= (IntDB: Value (String

SEV=10 AUTHDECODE/0 RPT=33 16:45:50.880 08/06/2002 416  
77696E64 6F777375 736572 windowsuser :0000

SEV=10 AUTHDECODE/12 RPT=18 16:45:50.880 08/06/2002 417  
IntDB: Type = 4109 (0x100D) IPSec-Authentication

SEV=10 AUTHDECODE/13 RPT=18 16:45:50.880 08/06/2002 418  
(IntDB: Length = 4 (0x04

SEV=10 AUTHDECODE/15 RPT=9 16:45:50.880 08/06/2002 419  
(IntDB: Value (Integer) = 6 (0x0006

SEV=10 AUTHDECODE/12 RPT=19 16:45:50.880 08/06/2002 420  
IntDB: Type = 4123 (0x101B) Split-Tunnel-Inclusion-List

SEV=10 AUTHDECODE/13 RPT=19 16:45:50.880 08/06/2002 421  
(IntDB: Length = 4 (0x04

SEV=10 AUTHDECODE/14 RPT=10 16:45:50.880 08/06/2002 422  
= (IntDB: Value (String

SEV=10 AUTHDECODE/0 RPT=34 16:45:50.880 08/06/2002 423  
test 74657374 :0000

SEV=10 AUTHDECODE/12 RPT=20 16:45:50.880 08/06/2002 424  
IntDB: Type = 4151 (0x1037) Split-Tunneling-Policy

SEV=10 AUTHDECODE/13 RPT=20 16:45:50.880 08/06/2002 425  
(IntDB: Length = 4 (0x04

SEV=10 AUTHDECODE/15 RPT=10 16:45:50.880 08/06/2002 426  
(IntDB: Value (Integer) = 1 (0x0001

SEV=8 AUTHDBG/48 RPT=241 16:45:50.880 08/06/2002 427  
(IntDB\_Rcv(9aa46fc

SEV=8 AUTHDBG/66 RPT=306 16:45:50.880 08/06/2002 428  
(AUTH\_DeleteTimer(9aa46fc, 0, 0

SEV=9 AUTHDBG/74 RPT=306 16:45:50.880 08/06/2002 429  
Reply timer stopped: handle = 5A120016, timestamp = 355274984

SEV=8 AUTHDBG/58 RPT=306 16:45:50.880 08/06/2002 430  
(AUTH\_Callback(9aa46fc, 0, 0

SEV=6 AUTH/41 RPT=220 171.69.89.90 16:45:50.880 08/06/2002 431  
,Authentication successful: handle = 103, server = Internal  
group = windowsuser

SEV=8 AUTHDBG/4 RPT=291 16:45:50.880 08/06/2002 432  
(AUTH\_GetAttrTable(103, 743aa8

SEV=8 AUTHDBG/4 RPT=292 16:45:50.880 08/06/2002 433  
(AUTH\_GetAttrTable(103, 743ad8

SEV=8 AUTHDBG/4 RPT=293 16:45:50.880 08/06/2002 434  
(AUTH\_GetAttrTable(103, 742a30

SEV=8 AUTHDBG/2 RPT=264 16:45:50.880 08/06/2002 435  
(AUTH\_Close(103

SEV=4 IKE/52 RPT=19 171.69.89.90 16:45:50.880 08/06/2002 436  
[Group [windowsuser] User [vpuser1  
.User (vpuser1) authenticated

SEV=8 AUTHDBG/60 RPT=306 16:45:50.880 08/06/2002 437  
(AUTH\_UnbindServer(9aa46fc, 0, 0

SEV=9 AUTHDBG/70 RPT=306 16:45:50.880 08/06/2002 438  
Auth Server 18cdfa4 has been unbound from ACB 9aa46fc, sessions = 0

SEV=8 AUTHDBG/10 RPT=264 16:45:50.880 08/06/2002 439  
(AUTH\_Int\_FreeAuthCB(9aa46fc

SEV=7 AUTH/13 RPT=265 16:45:50.880 08/06/2002 440  
Authentication session closed: handle = 103

SEV=6 IKE/130 RPT=30 171.69.89.90 16:45:50.900 08/06/2002 441  
[Group [windowsuser] User [vpuser1  
Received unsupported transaction mode attribute: 5

SEV=4 AUTH/22 RPT=286 16:45:50.930 08/06/2002 443  
User vpuser1 connected

SEV=4 IKE/119 RPT=23 171.69.89.90 16:45:50.930 08/06/2002 444  
[Group [windowsuser] User [vpuser1  
PHASE 1 COMPLETED

SEV=6 IKE/121 RPT=23 171.69.89.90 16:45:50.930 08/06/2002 445  
Keep-alive type for this connection: DPD

SEV=5 IKE/25 RPT=27 171.69.89.90 16:45:50.930 08/06/2002 446  
[Group [windowsuser] User [vpuser1  
:Received remote Proxy Host data in ID Payload  
Address 10.10.10.1, Protocol 0, Port 0

SEV=5 IKE/24 RPT=23 171.69.89.90 16:45:50.930 08/06/2002 449  
[Group [windowsuser] User [vpuser1  
:Received local Proxy Host data in ID Payload  
Address 172.16.172.36, Protocol 0, Port 0

SEV=5 IKE/66 RPT=27 171.69.89.90 16:45:50.930 08/06/2002 452  
[Group [windowsuser] User [vpuser1  
IKE Remote Peer configured for SA: ESP-3DES-MD5

SEV=5 IKE/75 RPT=27 171.69.89.90 16:45:50.930 08/06/2002 454  
[Group [windowsuser] User [vpuser1  
Overriding Initiator's IPSec rekeying duration from 2147483 to 28800 seconds

SEV=4 IKE/49 RPT=27 171.69.89.90 16:45:50.940 08/06/2002 456  
[Group [windowsuser] User [vpuser1  
(Security negotiation complete for User (vpuser1  
Responder, Inbound SPI = 0x36291f3d, Outbound SPI = 0x07345e3e

SEV=8 AUTHDBG/1 RPT=265 16:45:50.940 08/06/2002 459  
AUTH\_Open() returns 104

SEV=7 AUTH/12 RPT=266 16:45:50.940 08/06/2002 460  
Authentication session opened: handle = 104

```
SEV=8 AUTHDBG/3 RPT=307 16:45:50.940 08/06/2002 461
(AUTH_PutAttrTable(104, 1b3b748

SEV=8 AUTHDBG/7 RPT=31 16:45:50.940 08/06/2002 462
(AUTH_Accounting(104, 0, 0

SEV=4 IKE/120 RPT=27 171.69.89.90 16:45:50.940 08/06/2002 463
[Group [windowsuser] User [vpnuser1
(PHASE 2 COMPLETED (msgid=ed3c1f7c

SEV=8 AUTHDBG/59 RPT=307 16:45:50.940 08/06/2002 464
(AUTH_BindServer(9a9blec, 0, 0

SEV=9 AUTHDBG/69 RPT=307 16:45:50.940 08/06/2002 465
Acct Server 1811fa4 has been bound to ACB 9a9blec, sessions = 1

SEV=8 AUTHDBG/65 RPT=307 16:45:50.940 08/06/2002 466
(AUTH_CreateTimer(9a9blec, 0, 0

SEV=9 AUTHDBG/72 RPT=307 16:45:50.940 08/06/2002 467
Reply timer created: handle = 5A180017

SEV=8 AUTHDBG/61 RPT=307 16:45:50.940 08/06/2002 468
(AUTH_BuildMsg(9a9blec, 0, 0

SEV=8 AUTHDBG/27 RPT=66 16:45:50.940 08/06/2002 469
(Radius_Build(9a9blec

SEV=8 AUTHDBG/64 RPT=307 16:45:50.940 08/06/2002 470
(AUTH_StartTimer(9a9blec, 0, 0

SEV=9 AUTHDBG/73 RPT=307 16:45:50.940 08/06/2002 471
Reply timer started: handle = 5A180017, timestamp = 355274990, timeout = 1000

SEV=8 AUTHDBG/62 RPT=307 16:45:50.940 08/06/2002 472
(AUTH_SndRequest(9a9blec, 0, 0

SEV=8 AUTHDBG/31 RPT=131 16:45:50.940 08/06/2002 473
(Radius_Decode(62f2324, 140

SEV=13 AUTHDECODE/0 RPT=35 16:45:50.940 08/06/2002 474
..043A008C 0A49A1AF C3022A50 B74B0B97      :...I...*P.K :0000
..887AFEC1 010A7670 6E757365 72310506    :z....vpnuser1 :0010
.....          0000041C 06060000 00020706 00000001 :0020
08060A0A 0A011920 49200516 00000137      :..... I .....7 :0030
..0001AB45 593C01C2 037B9CB1 74320000    :..EY<...{..t2 :0040
2C0A3345      :...#(.....,3E 00000001 00232806 00000000 :0050
3144420E 3137312E 36392E38      50001DB.171.69.8 35303030 :0060
.....(.....392E3930 2D060000 00012906 00000000      9.90- :0070
.....=$.....          0406AC10 AC243D06 00000005 :0080

SEV=10 AUTHDECODE/1 RPT=5 16:45:50.940 08/06/2002 483
(Radius: Code = 4 (0x04

SEV=10 AUTHDECODE/2 RPT=5 16:45:50.940 08/06/2002 484
(Radius: Identifier = 58 (0x3A

SEV=10 AUTHDECODE/3 RPT=5 16:45:50.940 08/06/2002 485
(Radius: Length = 140 (0x008C

SEV=10 AUTHDECODE/4 RPT=5 16:45:50.940 08/06/2002 486
:Radius: Vector

SEV=10 AUTHDECODE/0 RPT=36 16:45:50.940 08/06/2002 487
```

```
..0A49A1AF C3022A50 B74B0B97 887AFEC1 .I....*P.K...z :0000

SEV=10 AUTHDECODE/5 RPT=42 16:45:50.940 08/06/2002 488
      Radius: Type = 1 (0x01) User-Name

SEV=10 AUTHDECODE/6 RPT=42 16:45:50.940 08/06/2002 489
      (Radius: Length = 10 (0x0A)

SEV=10 AUTHDECODE/7 RPT=17 16:45:50.940 08/06/2002 490
      = (Radius: Value (String)

SEV=10 AUTHDECODE/0 RPT=37 16:45:50.940 08/06/2002 491
76706E75 73657231                      vpnuser1 :0000

SEV=10 AUTHDECODE/5 RPT=43 16:45:50.940 08/06/2002 492
      Radius: Type = 5 (0x05) NAS-Port

SEV=10 AUTHDECODE/6 RPT=43 16:45:50.940 08/06/2002 493
      (Radius: Length = 6 (0x06)

SEV=10 AUTHDECODE/11 RPT=11 16:45:50.940 08/06/2002 494
      Radius: Value (Hex) = 0x41C

SEV=10 AUTHDECODE/5 RPT=44 16:45:50.940 08/06/2002 495
      Radius: Type = 6 (0x06) Service-Type

SEV=10 AUTHDECODE/6 RPT=44 16:45:50.940 08/06/2002 496
      (Radius: Length = 6 (0x06)

SEV=10 AUTHDECODE/11 RPT=12 16:45:50.940 08/06/2002 497
      Radius: Value (Hex) = 0x2

SEV=10 AUTHDECODE/5 RPT=45 16:45:50.940 08/06/2002 498
      Radius: Type = 7 (0x07) Framed-Protocol

SEV=10 AUTHDECODE/6 RPT=45 16:45:50.940 08/06/2002 499
      (Radius: Length = 6 (0x06)

SEV=10 AUTHDECODE/11 RPT=13 16:45:50.940 08/06/2002 500
      Radius: Value (Hex) = 0x1

SEV=10 AUTHDECODE/5 RPT=46 16:45:50.940 08/06/2002 501
      Radius: Type = 8 (0x08) Framed-IP-Address

SEV=10 AUTHDECODE/6 RPT=46 16:45:50.940 08/06/2002 502
      (Radius: Length = 6 (0x06)

SEV=10 AUTHDECODE/9 RPT=3 16:45:50.940 08/06/2002 503
      (Radius: Value (IP Address) = 10.10.10.1 (0x0A0A0A01)

SEV=10 AUTHDECODE/5 RPT=47 16:45:50.940 08/06/2002 504
      Radius: Type = 25 (0x19) Class

SEV=10 AUTHDECODE/6 RPT=47 16:45:50.940 08/06/2002 505
      (Radius: Length = 32 (0x20)

SEV=10 AUTHDECODE/7 RPT=18 16:45:50.940 08/06/2002 506
      = (Radius: Value (String)

SEV=10 AUTHDECODE/0 RPT=38 16:45:50.940 08/06/2002 507
..>0001AB45 593C01C2      I .....7...EY 00000137 49200516 :0000
#.....037B9CB1 74320000 00000000 0023      .{..t2 :0010

SEV=10 AUTHDECODE/5 RPT=48 16:45:50.940 08/06/2002 509
```

Radius: Type = 40 (0x28) Acct-Status-Type

SEV=10 AUTHDECODE/6 RPT=48 16:45:50.940 08/06/2002 510  
(Radius: Length = 6 (0x06)

SEV=10 AUTHDECODE/11 RPT=14 16:45:50.940 08/06/2002 511  
Radius: Value (Hex) = 0x1

SEV=10 AUTHDECODE/5 RPT=49 16:45:50.940 08/06/2002 512  
Radius: Type = 44 (0x2C) Acct-Session-Id

SEV=10 AUTHDECODE/6 RPT=49 16:45:50.940 08/06/2002 513  
(Radius: Length = 10 (0x0A)

SEV=10 AUTHDECODE/7 RPT=19 16:45:50.940 08/06/2002 514  
= (Radius: Value (String

SEV=10 AUTHDECODE/0 RPT=39 16:45:50.940 08/06/2002 515  
3E50001D 30303144 33453530 :0000

SEV=10 AUTHDECODE/5 RPT=50 16:45:50.940 08/06/2002 516  
Radius: Type = 66 (0x42) Tunnel-Client-Endpoint

SEV=10 AUTHDECODE/6 RPT=50 16:45:50.940 08/06/2002 517  
(Radius: Length = 14 (0x0E)

SEV=10 AUTHDECODE/7 RPT=20 16:45:50.940 08/06/2002 518  
= (Radius: Value (String

SEV=10 AUTHDECODE/0 RPT=40 16:45:50.940 08/06/2002 519  
3137312E 36392E38 392E3930 171.69.89.90 :0000

SEV=10 AUTHDECODE/5 RPT=51 16:45:50.940 08/06/2002 520  
Radius: Type = 45 (0x2D) Acct-Authentic

SEV=10 AUTHDECODE/6 RPT=51 16:45:50.940 08/06/2002 521  
(Radius: Length = 6 (0x06)

SEV=10 AUTHDECODE/11 RPT=15 16:45:50.940 08/06/2002 522  
Radius: Value (Hex) = 0x1

SEV=10 AUTHDECODE/5 RPT=52 16:45:50.940 08/06/2002 523  
Radius: Type = 41 (0x29) Acct-Delay-Time

SEV=10 AUTHDECODE/6 RPT=52 16:45:50.940 08/06/2002 524  
(Radius: Length = 6 (0x06)

SEV=10 AUTHDECODE/11 RPT=16 16:45:50.940 08/06/2002 525  
Radius: Value (Hex) = 0x0

SEV=10 AUTHDECODE/5 RPT=53 16:45:50.940 08/06/2002 526  
Radius: Type = 4 (0x04) NAS-IP-Address

SEV=10 AUTHDECODE/6 RPT=53 16:45:50.940 08/06/2002 527  
(Radius: Length = 6 (0x06)

SEV=10 AUTHDECODE/9 RPT=4 16:45:50.940 08/06/2002 528  
(Radius: Value (IP Address) = 172.16.172.36 (0xAC10AC24

SEV=10 AUTHDECODE/5 RPT=54 16:45:50.940 08/06/2002 529  
Radius: Type = 61 (0x3D) NAS-Port-Type

SEV=10 AUTHDECODE/6 RPT=54 16:45:50.940 08/06/2002 530  
(Radius: Length = 6 (0x06)

```
SEV=10 AUTHDECODE/11 RPT=17 16:45:50.940 08/06/2002 531
      Radius: Value (Hex) = 0x5

SEV=8 AUTHDBG/28 RPT=66 16:45:50.940 08/06/2002 532
      (Radius_Xmt(9a9blec

SEV=9 AUTHDBG/71 RPT=307 16:45:50.940 08/06/2002 533
      xmit_cnt = 1

SEV=8 AUTHDBG/30 RPT=66 16:45:51.040 08/06/2002 534
Radius_Match(9a9blec, 500aacc), id = 0x3A, rcvd = 0x3A

SEV=8 AUTHDBG/63 RPT=307 16:45:51.040 08/06/2002 535
      (AUTH_RcvReply(9a9blec, 0, 0

SEV=8 AUTHDBG/31 RPT=132 16:45:51.040 08/06/2002 536
      (Radius_DeCode(500aacc, 20

SEV=13 AUTHDECODE/0 RPT=41 16:45:51.040 08/06/2002 537
...].&.053A0014 7DE07642 671D26FA 5B2E1904      ...}.vBg :0000
      ..?.      943FA41A :0010

SEV=10 AUTHDECODE/1 RPT=6 16:45:51.040 08/06/2002 539
      (Radius: Code = 5 (0x05

SEV=10 AUTHDECODE/2 RPT=6 16:45:51.040 08/06/2002 540
      (Radius: Identifier = 58 (0x3A

SEV=10 AUTHDECODE/3 RPT=6 16:45:51.040 08/06/2002 541
      (Radius: Length = 20 (0x0014

SEV=10 AUTHDECODE/4 RPT=6 16:45:51.040 08/06/2002 542
      :Radius: Vector

SEV=10 AUTHDECODE/0 RPT=42 16:45:51.040 08/06/2002 543
...?....].&.7DE07642 671D26FA 5B2E1904 943FA41A      }.vBg :0000

SEV=8 AUTHDBG/29 RPT=66 16:45:51.040 08/06/2002 544
      (Radius_Rcv(9a9blec

SEV=8 AUTHDBG/66 RPT=307 16:45:51.040 08/06/2002 545
      (AUTH_DeleteTimer(9a9blec, 0, 0

SEV=9 AUTHDBG/74 RPT=307 16:45:51.040 08/06/2002 546
Reply timer stopped: handle = 5A180017, timestamp = 355275000

SEV=8 AUTHDBG/58 RPT=307 16:45:51.040 08/06/2002 547
      (AUTH_Callback(9a9blec, 0, 0

SEV=6 AUTH/10 RPT=31 171.69.89.90 16:45:51.040 08/06/2002 548
Accounting successful: handle = 104, server = 171.69.89.154, user = vpnuser1

SEV=8 AUTHDBG/2 RPT=265 16:45:51.040 08/06/2002 549
      (AUTH_Close(104

SEV=8 AUTHDBG/60 RPT=307 16:45:51.040 08/06/2002 550
      (AUTH_UnbindServer(9a9blec, 0, 0

SEV=9 AUTHDBG/70 RPT=307 16:45:51.040 08/06/2002 551
Acct Server 1811fa4 has been unbound from ACB 9a9blec, sessions = 0

SEV=8 AUTHDBG/10 RPT=265 16:45:51.040 08/06/2002 552
```



```
(AUTH_Int_FreeAuthCB(9a9blec

SEV=7 AUTH/13 RPT=266 16:45:51.040 08/06/2002 553
    Authentication session closed: handle = 104

SEV=5 IKE/50 RPT=37 171.69.89.90 16:45:54.890 08/06/2002 554
    [Group [windowsuser] User [vpnuser1
(Connection terminated for peer vpnuser1 (Peer Terminate
    Remote Proxy 10.10.10.1, Local Proxy 172.16.172.36

SEV=8 AUTHDBG/1 RPT=266 16:45:54.890 08/06/2002 557
    AUTH_Open() returns 105

SEV=7 AUTH/12 RPT=267 16:45:54.890 08/06/2002 558
    Authentication session opened: handle = 105

SEV=8 AUTHDBG/3 RPT=308 16:45:54.890 08/06/2002 559
    (AUTH_PutAttrTable(105, 1b3b730

SEV=8 AUTHDBG/7 RPT=32 16:45:54.890 08/06/2002 560
    (AUTH_Accounting(105, 0, 0

SEV=4 AUTH/28 RPT=23 171.69.89.90 16:45:54.890 08/06/2002 561
    :User [vpnuser1] disconnected
    Duration: 0:00:03
    Bytes xmt: 0
    Bytes rcv: 0
    Reason: User Requested

SEV=8 AUTHDBG/59 RPT=308 16:45:54.890 08/06/2002 563
    (AUTH_BindServer(9a043f0, 0, 0

SEV=9 AUTHDBG/69 RPT=308 16:45:54.890 08/06/2002 564
Acct Server 1811fa4 has been bound to ACB 9a043f0, sessions = 1

SEV=8 AUTHDBG/65 RPT=308 16:45:54.890 08/06/2002 565
    (AUTH_CreateTimer(9a043f0, 0, 0

SEV=9 AUTHDBG/72 RPT=308 16:45:54.890 08/06/2002 566
    Reply timer created: handle = 5A19001B

SEV=8 AUTHDBG/61 RPT=308 16:45:54.890 08/06/2002 567
    (AUTH_BuildMsg(9a043f0, 0, 0

SEV=8 AUTHDBG/27 RPT=67 16:45:54.890 08/06/2002 568
    (Radius_Build(9a043f0

SEV=8 AUTHDBG/64 RPT=308 16:45:54.890 08/06/2002 569
    (AUTH_StartTimer(9a043f0, 0, 0

SEV=9 AUTHDBG/73 RPT=308 16:45:54.890 08/06/2002 570
Reply timer started: handle = 5A19001B, timestamp = 355275385, timeout = 1000

SEV=8 AUTHDBG/62 RPT=308 16:45:54.890 08/06/2002 571
    (AUTH_SndRequest(9a043f0, 0, 0

SEV=8 AUTHDBG/31 RPT=133 16:45:54.890 08/06/2002 572
    (Radius_Decode(630894c, 176

SEV=13 AUTHDECODE/0 RPT=43 16:45:54.890 08/06/2002 573
+#043B00B0 295505F0 864A0A1F 6345232B      ;..)U...J..cE :0000
..81D315E5 010A7670 6E757365 72310506      .....vpnuser1 :0010
.....          0000041C 06060000 00020706 00000001 :0020
08060A0A 0A011920 49200516 00000137      ..... I .....7 :0030
```

```
..0001AB45 593C01C2 037B9CB1 74320000    ...EY<...{..t2 :0040
...*.....)#.....    2A060000 00000002 00232806 00000000 :0050
00002B06 00000000 2C0A3345 35303030    ..+.....,3E5000 :0060
.31442E06 00000004 2F060000 00003006    1D...../.....0 :0070
.0001420E 3137312E    ....1.....B.171 31060000 00000000 :0080
.(.....36392E38 392E3930 2D060000 00012906    69.89.90- :0090
.....=$.....    00A0: 00000000 0406AC10 AC243D06 00000005
```

```
SEV=10 AUTHDECODE/1 RPT=7 16:45:54.890 08/06/2002 584
(Radius: Code = 4 (0x04)
```

```
SEV=10 AUTHDECODE/2 RPT=7 16:45:54.890 08/06/2002 585
(Radius: Identifier = 59 (0x3B)
```

```
SEV=10 AUTHDECODE/3 RPT=7 16:45:54.890 08/06/2002 586
(Radius: Length = 176 (0x00B0)
```

```
SEV=10 AUTHDECODE/4 RPT=7 16:45:54.890 08/06/2002 587
:Radius: Vector
```

```
SEV=10 AUTHDECODE/0 RPT=44 16:45:54.890 08/06/2002 588
.....+#295505F0 864A0A1F 6345232B 81D315E5    )U...J...cE :0000
```

```
SEV=10 AUTHDECODE/5 RPT=55 16:45:54.890 08/06/2002 589
Radius: Type = 1 (0x01) User-Name
```

```
SEV=10 AUTHDECODE/6 RPT=55 16:45:54.890 08/06/2002 590
(Radius: Length = 10 (0x0A)
```

```
SEV=10 AUTHDECODE/7 RPT=21 16:45:54.890 08/06/2002 591
= (Radius: Value (String)
```

```
SEV=10 AUTHDECODE/0 RPT=45 16:45:54.890 08/06/2002 592
76706E75 73657231    vpnuser1 :0000
```

```
SEV=10 AUTHDECODE/5 RPT=56 16:45:54.900 08/06/2002 593
Radius: Type = 5 (0x05) NAS-Port
```

```
SEV=10 AUTHDECODE/6 RPT=56 16:45:54.900 08/06/2002 594
(Radius: Length = 6 (0x06)
```

```
SEV=10 AUTHDECODE/11 RPT=18 16:45:54.900 08/06/2002 595
Radius: Value (Hex) = 0x41C
```

```
SEV=10 AUTHDECODE/5 RPT=57 16:45:54.900 08/06/2002 596
Radius: Type = 6 (0x06) Service-Type
```

```
SEV=10 AUTHDECODE/6 RPT=57 16:45:54.900 08/06/2002 597
(Radius: Length = 6 (0x06)
```

```
SEV=10 AUTHDECODE/11 RPT=19 16:45:54.900 08/06/2002 598
Radius: Value (Hex) = 0x2
```

```
SEV=10 AUTHDECODE/5 RPT=58 16:45:54.900 08/06/2002 599
Radius: Type = 7 (0x07) Framed-Protocol
```

```
SEV=10 AUTHDECODE/6 RPT=58 16:45:54.900 08/06/2002 600
(Radius: Length = 6 (0x06)
```

```
SEV=10 AUTHDECODE/11 RPT=20 16:45:54.900 08/06/2002 601
Radius: Value (Hex) = 0x1
```

```
SEV=10 AUTHDECODE/5 RPT=59 16:45:54.900 08/06/2002 602
Radius: Type = 8 (0x08) Framed-IP-Address
```

SEV=10 AUTHDECODE/6 RPT=59 16:45:54.900 08/06/2002 603  
(Radius: Length = 6 (0x06)

SEV=10 AUTHDECODE/9 RPT=5 16:45:54.900 08/06/2002 604  
(Radius: Value (IP Address) = 10.10.10.1 (0x0A0A0A01

SEV=10 AUTHDECODE/5 RPT=60 16:45:54.900 08/06/2002 605  
Radius: Type = 25 (0x19) Class

SEV=10 AUTHDECODE/6 RPT=60 16:45:54.900 08/06/2002 606  
(Radius: Length = 32 (0x20

SEV=10 AUTHDECODE/7 RPT=22 16:45:54.900 08/06/2002 607  
= (Radius: Value (String

SEV=10 AUTHDECODE/0 RPT=46 16:45:54.900 08/06/2002 608  
<...>0001AB45 593C01C2 I .....7...EY 00000137 49200516 :0000  
#.....037B9CB1 74320000 00000000 0023 .{..t2 :0010

SEV=10 AUTHDECODE/5 RPT=61 16:45:54.900 08/06/2002 610  
Radius: Type = 40 (0x28) Acct-Status-Type

SEV=10 AUTHDECODE/6 RPT=61 16:45:54.900 08/06/2002 611  
(Radius: Length = 6 (0x06

SEV=10 AUTHDECODE/11 RPT=21 16:45:54.900 08/06/2002 612  
Radius: Value (Hex) = 0x2

SEV=10 AUTHDECODE/5 RPT=62 16:45:54.900 08/06/2002 613  
Radius: Type = 42 (0x2A) Acct-Input-Octets

SEV=10 AUTHDECODE/6 RPT=62 16:45:54.900 08/06/2002 614  
(Radius: Length = 6 (0x06

SEV=10 AUTHDECODE/11 RPT=22 16:45:54.900 08/06/2002 615  
Radius: Value (Hex) = 0x0

SEV=10 AUTHDECODE/5 RPT=63 16:45:54.900 08/06/2002 616  
Radius: Type = 43 (0x2B) Acct-Output-Octets

SEV=10 AUTHDECODE/6 RPT=63 16:45:54.900 08/06/2002 617  
(Radius: Length = 6 (0x06

SEV=10 AUTHDECODE/11 RPT=23 16:45:54.900 08/06/2002 618  
Radius: Value (Hex) = 0x0

SEV=10 AUTHDECODE/5 RPT=64 16:45:54.900 08/06/2002 619  
Radius: Type = 44 (0x2C) Acct-Session-Id

SEV=10 AUTHDECODE/6 RPT=64 16:45:54.900 08/06/2002 620  
(Radius: Length = 10 (0x0A

SEV=10 AUTHDECODE/7 RPT=23 16:45:54.900 08/06/2002 621  
= (Radius: Value (String

SEV=10 AUTHDECODE/0 RPT=47 16:45:54.900 08/06/2002 622  
3E50001D 30303144 33453530 :0000

SEV=10 AUTHDECODE/5 RPT=65 16:45:54.900 08/06/2002 623  
Radius: Type = 46 (0x2E) Acct-Session-Time

SEV=10 AUTHDECODE/6 RPT=65 16:45:54.900 08/06/2002 624  
(Radius: Length = 6 (0x06

SEV=10 AUTHDECODE/11 RPT=24 16:45:54.900 08/06/2002 625  
Radius: Value (Hex) = 0x4

SEV=10 AUTHDECODE/5 RPT=66 16:45:54.900 08/06/2002 626  
Radius: Type = 47 (0x2F) Acct-Input-Packets

SEV=10 AUTHDECODE/6 RPT=66 16:45:54.900 08/06/2002 627  
(Radius: Length = 6 (0x06)

SEV=10 AUTHDECODE/11 RPT=25 16:45:54.900 08/06/2002 628  
Radius: Value (Hex) = 0x0

SEV=10 AUTHDECODE/5 RPT=67 16:45:54.900 08/06/2002 629  
Radius: Type = 48 (0x30) Acct-Output-Packets

SEV=10 AUTHDECODE/6 RPT=67 16:45:54.900 08/06/2002 630  
(Radius: Length = 6 (0x06)

SEV=10 AUTHDECODE/11 RPT=26 16:45:54.900 08/06/2002 631  
Radius: Value (Hex) = 0x0

SEV=10 AUTHDECODE/5 RPT=68 16:45:54.900 08/06/2002 632  
Radius: Type = 49 (0x31) Acct-Terminate-Cause

SEV=10 AUTHDECODE/6 RPT=68 16:45:54.900 08/06/2002 633  
(Radius: Length = 6 (0x06)

SEV=10 AUTHDECODE/11 RPT=27 16:45:54.900 08/06/2002 634  
Radius: Value (Hex) = 0x1

SEV=10 AUTHDECODE/5 RPT=69 16:45:54.900 08/06/2002 635  
Radius: Type = 66 (0x42) Tunnel-Client-Endpoint

SEV=10 AUTHDECODE/6 RPT=69 16:45:54.900 08/06/2002 636  
(Radius: Length = 14 (0x0E)

SEV=10 AUTHDECODE/7 RPT=24 16:45:54.900 08/06/2002 637  
= (Radius: Value (String

SEV=10 AUTHDECODE/0 RPT=48 16:45:54.900 08/06/2002 638  
3137312E 36392E38 392E3930 171.69.89.90 :0000

SEV=10 AUTHDECODE/5 RPT=70 16:45:54.900 08/06/2002 639  
Radius: Type = 45 (0x2D) Acct-Authentic

SEV=10 AUTHDECODE/6 RPT=70 16:45:54.900 08/06/2002 640  
(Radius: Length = 6 (0x06)

SEV=10 AUTHDECODE/11 RPT=28 16:45:54.900 08/06/2002 641  
Radius: Value (Hex) = 0x1

SEV=10 AUTHDECODE/5 RPT=71 16:45:54.900 08/06/2002 642  
Radius: Type = 41 (0x29) Acct-Delay-Time

SEV=10 AUTHDECODE/6 RPT=71 16:45:54.900 08/06/2002 643  
>(Radius: Length = 6 (0x06)

SEV=10 AUTHDECODE/11 RPT=29 16:45:54.900 08/06/2002 644  
Radius: Value (Hex) = 0x0

SEV=10 AUTHDECODE/5 RPT=72 16:45:54.900 08/06/2002 645  
Radius: Type = 4 (0x04) NAS-IP-Address

```
SEV=10 AUTHDECODE/6 RPT=72 16:45:54.900 08/06/2002 646
(Radius: Length = 6 (0x06)

SEV=10 AUTHDECODE/9 RPT=6 16:45:54.900 08/06/2002 647
(Radius: Value (IP Address) = 172.16.172.36 (0xAC10AC24)

SEV=10 AUTHDECODE/5 RPT=73 16:45:54.900 08/06/2002 648
Radius: Type = 61 (0x3D) NAS-Port-Type

SEV=10 AUTHDECODE/6 RPT=73 16:45:54.900 08/06/2002 649
(Radius: Length = 6 (0x06)

SEV=10 AUTHDECODE/11 RPT=30 16:45:54.900 08/06/2002 650
Radius: Value (Hex) = 0x5

SEV=8 AUTHDBG/28 RPT=67 16:45:54.900 08/06/2002 651
(Radius_Xmt(9a043f0)

SEV=9 AUTHDBG/71 RPT=308 16:45:54.900 08/06/2002 652
xmit_cnt = 1

SEV=6 IKE/38 RPT=31 171.69.89.90 16:45:54.900 08/06/2002 653
(Header invalid, missing SA payload! (next payload = 8

SEV=8 AUTHDBG/30 RPT=67 16:45:54.990 08/06/2002 654
Radius_Match(9a043f0, 5009d58), id = 0x3B, rcvd = 0x3B

SEV=8 AUTHDBG/63 RPT=308 16:45:54.990 08/06/2002 655
(AUTH_RcvReply(9a043f0, 0, 0)

SEV=8 AUTHDBG/31 RPT=134 16:45:54.990 08/06/2002 656
(Radius_Decode(5009d58, 20)

SEV=13 AUTHDECODE/0 RPT=49 16:45:54.990 08/06/2002 657
@053B0014 A7C83B83 2EA5C679 FB0B4540 .i.....i.....y..E :0000
...4F1A83EB O :0010

SEV=10 AUTHDECODE/1 RPT=8 16:45:54.990 08/06/2002 659
(Radius: Code = 5 (0x05)

SEV=10 AUTHDECODE/2 RPT=8 16:45:54.990 08/06/2002 660
(Radius: Identifier = 59 (0x3B)

SEV=10 AUTHDECODE/3 RPT=8 16:45:54.990 08/06/2002 661
(Radius: Length = 20 (0x0014)

SEV=10 AUTHDECODE/4 RPT=8 16:45:54.990 08/06/2002 662
:Radius: Vector

SEV=10 AUTHDECODE/0 RPT=50 16:45:54.990 08/06/2002 663
...A7C83B83 2EA5C679 FB0B4540 4F1A83EB ..i.....y..E@O :0000

SEV=8 AUTHDBG/29 RPT=67 16:45:54.990 08/06/2002 664
(Radius_Rcv(9a043f0)

SEV=8 AUTHDBG/66 RPT=308 16:45:54.990 08/06/2002 665
(AUTH_DeleteTimer(9a043f0, 0, 0)

SEV=9 AUTHDBG/74 RPT=308 16:45:54.990 08/06/2002 666
Reply timer stopped: handle = 5A19001B, timestamp = 355275395

SEV=8 AUTHDBG/58 RPT=308 16:45:54.990 08/06/2002 667
(AUTH_Callback(9a043f0, 0, 0)
```

SEV=6 AUTH/10 RPT=32 171.69.89.90 16:45:54.990 08/06/2002 668  
Accounting successful: handle = 105, server = 171.69.89.154, user = vpnuser1

SEV=8 AUTHDBG/2 RPT=266 16:45:54.990 08/06/2002 669  
(AUTH\_Close(105

SEV=8 AUTHDBG/60 RPT=308 16:45:54.990 08/06/2002 670  
(AUTH\_UnbindServer(9a043f0, 0, 0

SEV=9 AUTHDBG/70 RPT=308 16:45:54.990 08/06/2002 671  
Acct Server 1811fa4 has been unbound from ACB 9a043f0, sessions = 0

SEV=8 AUTHDBG/10 RPT=266 16:45:54.990 08/06/2002 672  
(AUTH\_Int\_FreeAuthCB(9a043f0

SEV=7 AUTH/13 RPT=267 16:45:54.990 08/06/2002 673  
Authentication session closed: handle = 105

## معلومات ذات صلة

- [صفحة دعم مركز Cisco VPN 3000 Series](#)
- [صفحة دعم عميل Cisco VPN 3000 Series](#)
- [صفحة دعم IPSec](#)
- [الدعم الفني - Cisco Systems](#)

ةمچرتل هذه لوج

ةللأل تاي نقتل نم ةومچم مادختساب دن تسمل اذه Cisco تچرت  
ملاعلاء انءمچ يف نيمدختسمل معدى وتحم مي دقتل ةيرشبلاو  
امك ةقيد نوك تنل ةللأل ةمچرت لصف أن ةظحال مچرئى. ةصاغل مهتغب  
Cisco يلخت. فرتحم مچرت مامدقي يتل ةيفارتحال ةمچرتل عم لالحل وه  
ىلإ أمئاد عوچرلاب يصوت وتامچرتل هذه ةقد نع اهتيلوئسم Cisco  
Systems (رفوتم طبارلا) يلصلأل يزلچنلإل دن تسمل