

ØªÙfÙ^ÙŠÙ† Ù...Ù^Ù◊Ø± Ø§Ù,,Ù‡Ù^ÙŠØ© Ù,,Ø®Ø¯Ù...Ø© ØªØ¹Ø±ÙŠÙ◊ Cisco Ù,,ØªÙ...ÙfÙŠÙ† SSO

Ø§Ù,,Ù...ØØªÙ^ÙŠØ§Øª

- [Ø§Ù,,Ù...Ù,Ø-Ù...Ø©](#)
- [Ø§Ù,,Ù...ØªØ-Ù,,Ø¯Ø§Øª Ø§Ù,,Ø£Ø³Ø§Ø³ÙŠØ©](#)
- [Ø§Ù,,Ù...ØªØ-Ù,,Ø¯Ø§Øª](#)
- [Ø§Ù,,Ù...ÙfÙ^Ù†Ø§Øª Ø§Ù,,Ù...Ø³ØªØ©Ø-Ù...Ø©](#)
- [Ù...Ø¹Ù,,Ù^Ù...Ø§Øª Ø£Ø³Ø§Ø³ÙŠØ©](#)
- [Ù†Ø,Ø±Ø© Ø¹Ø§Ù...Ø© Ø¹Ù,,Ù% SSO](#)
- [Ù†Ø,Ø±Ø© Ø¹Ø§Ù...Ø© Ø¹Ù,,Ù% Ø§Ù,,ØªÙfÙ^ÙŠÙ†](#)
- [Ø§Ù,,ØªÙfÙ^ÙŠÙ†](#)
- [Ø£Ù†Ù^Ø§Ø¹ Ø§Ù,,Ù...ØØ§Ø-Ù,Ø©](#)
- [ØªØ£Ø³ÙŠØ³ Ø¹Ù,,Ø§Ù,Ø© Ø«Ù,Ø©](#)
- [Ù†Ø,Ø§Ù... Ø§Ù,,Ù...Ù,,Ù◊Ø§Øª ADFS 2.0](#)
- [Ù†Ø,Ø§Ù... Ø§Ù,,Ù...Ù,,Ù◊Ø§Øª ADFS 3.0](#)
- [ØªÙ...ÙfÙŠÙ† ØªØ£ÙfÙŠØ-Ø§Øª SAML Ø§Ù,,Ù...Ù^Ù,Ø¹Ø© Ù,,Ø«Ù,Ø© Ø§Ù,,Ø-Ø±Ù◊](#)
- [Ø§Ù,,Ù...Ø¹ØªÙ...Ø¯ \(Ù...Ø¹Ø±Ù◊Ø§Øª Cisco\)](#)
- [Ù,,ØªÙfÙ^ÙŠÙ† Ù...ØªØ¹Ø-Ø-Ø§Ù,,Ù...Ø-Ø§Ù,,Ø§Øª Ù,, ADFS Ø§Ù,,Ù...ØªØ-](#)
- [ØªÙfÙ^ÙŠÙ† ADFS Ø§Ù,,Ù...ØªØ-](#)
- [ØªÙfÙ^ÙŠÙ† ADFS Ø§Ù,,Ø£Ø³Ø§Ø³ÙŠ](#)
- [Ø§Ù,,ØªØ-Ø-ÙŠÙ,, Ø§Ù,,ØªÙ,,Ù,Ø§Ø¹ÙŠ Ù,,Ù,,Ø^Ù†Ø§Ø-Ø© ADFS](#)
- [Ù...ØØ§Ø-Ù,Ø© Kerberos \(Ù...ØØ§Ø-Ù,Ø© Windows Ø§Ù,,Ù...ØªÙfØ§Ù...Ù,,Ø©\)](#)
- [ØªÙfÙ^ÙŠÙ† Microsoft Internet Explorer Ù,,Ø-Ø¹Ù... IWA](#)
- [ÙŠÙ,,Ø²Ù... ØªÙ^Ù◊Ø± Ø§Ù,,ØªÙ†ÙŠØ!Ø© Ù,,Ø¯Ø±Ù†Ø§Ù...Ø- Mozilla Firefox Ù,,Ø-Ø¹Ù... ØªÙ,Ù†ÙŠØ© IWA](#)
- [ÙŠÙ,,Ø²Ù... ØªÙ^Ù◊Ø± Ø§Ù,,ØªÙfÙ^ÙŠÙ† Ù,, Google Chrome Ù,,Ø-Ø¹Ù... IWA](#)
- [Ù...Ø²ÙŠØ-Ù...Ù† Ø§Ù,,ØªÙfÙ^ÙŠÙ† Ù,, SSO](#)
- [Ø§Ù,,ØªØÙ,Ù, Ù...Ù† Ø§Ù,,ØØØ©](#)
- [Ø§Ø³ØªÙfØ-Ø§Ù◊ Ø§Ù,,Ø£Ø®Ø·Ø§Ø; Ù^Ø¥ØµÙ,,Ø§ØÙ†Ø§](#)
- [Ø¹Ù†Ø§Ù^ÙŠÙ† URL Ø¥Ø³ØªØ±Ø-Ø§Ø-/ØªØ-Ø§Ù^Ø² UCCX SSO](#)
- [ØªØ¹Ø-ÙŠÙ,, SSO](#)
- [Ù...Ø³Ø§Ù...ÙŠØ± Ù,,Ù^Ù,,Ø^ÙŠØ©](#)
- [Ø¥Ø-Ø§Ø±Ø© CCX - NON SSO](#)
- [Ø¥Ø-Ø§Ø±Ø© CCX - ØªÙ...ÙfÙŠÙ† SSO](#)
- [ØªØ³Ø-ÙŠÙ,, Ø-Ø®Ù^Ù,, Finesse - Ø-Ø®Ù,,Ø§Ù◊ SSO](#)
- [ØªØ³Ø-ÙŠÙ,, Ø-Ø®Ù^Ù,, Finesse - ØªÙ...ÙfÙŠÙ† SSO](#)
- [CUIC - non SSO](#)
- [CUIC - ØªÙ...ÙfÙŠÙ† SSO](#)

Ø§Ù,,Ù...Ù,Ø-Ù...Ø©

ÙŠØµ◊ Ù‡Ø°Ø§ Ø§Ù,,Ù...Ø³ØªÙ†Ø¯ ØªÙfÙ^ÙŠÙ† Ù...Ù^Ù◊Ø± Ø§Ù,,Ù‡Ù^ÙŠØ© (IdP)
Ù,,Ø®Ø¯Ù...Ø© ØªØ¹Ø±ÙŠÙ◊ Cisco (IdS) Ù,,ØªÙ...ÙfÙŠÙ† ØªØ³Ø-ÙŠÙ,, Ø§Ù,,Ø-Ø®Ù^Ù,,

ØSÙ,,ØEØØSØ`ÙŠ (SSO).

Ø§Ù,,Ù...ØªØ·Ù,,Ø·Ø§Øª Ø§Ù,,Ø£Ø³Ø§Ø³ÙŠØ©

Ø§Ù,,Ù...ØªØ·Ù,,Ø·Ø§Øª

ØªÙ`ØµŠ Cisco Ø·Ø£Ù† ØªÙfÙ`Ù† Ù,,Ø`ÙŠÙf Ù...Ø¹Ø±Ù`Ø© Ø`ØSÙ,,Ù...Ù`ØSØ¶ÙŠØ¹ ØSÙ,,ØªØSÙ,,ÙŠØ©:

- Cisco Unified Contact Center Express (UCCX) Ø§Ù,,Ø¥ØØ`Ø§Ø± 11.5 Ø£Ù` Cisco Unified Contact Center Enterprise Ø§Ù,,Ø¥ØØ`Ø§Ø± 11.5 Ø£Ù` Packaged Contact Center Enterprise (PCCE) Ø§Ù,,Ø¥ØØ`Ø§Ø± 11.5 ØØ³Ø` Ø§Ù,,Ø§Ù,ØªØ¶Ø§Ø;
- Microsoft Active Directory - AD Ù...Ø«Ø`Øª Ø¹Ù,,Ù% Windows Server
- Active Directory Federation Service (ADFS)ØCE Ø§Ù,,Ø¥ØØ`Ø§Ø± 2.0/3.0

Ù...Ù,,Ø§ØØ,Ø©: ÙŠØ`ÙŠØ± Ù‡Ø°Ø§ Ø§Ù,,Ù...Ø³ØªÙ†Ø` Ø¥Ù,,Ù% UCCX Ù`ÙŠ ØSÙ,,Ø`ØSØ´Ø© ØSÙ,,ØªÙ,ØSØ· Ù`Ø£Ù...Ø«Ù,,Ø©ØCE Ù`Ù...Ø¹ Ø`Ù,,ÙfØCE Ù`Ø¥Ù† ØSÙ,,ØªÙfÙ`ÙŠÙ† Ù...Ù...ØSØ«Ù,, Ù`ÙŠÙ...ØS ÙŠØªØ¹Ù,,Ù, Ø`Ù...Ø¹Ø±Ù`Ø§Øª Cisco (UCCX/UCCE/PCCE) Ù` IdP.

Ø§Ù,,Ù...ÙfÙ`Ù†Ø§Øª Ø§Ù,,Ù...Ø³ØªØ®Ø`Ù...Ø©

Ù,,Ø§ ÙŠÙ,ØªØ± Ù‡Ø°Ø§ Ø§Ù,,Ù...Ø³ØªÙ†Ø` Ø¹Ù,,Ù% Ø¥ØØ`Ø§Ø±Ø§Øª Ø`Ø±Ø§Ù...Ø` Ù`Ù...ÙfÙ`Ù†Ø§Øª Ù...Ø§Ø`ÙŠØ© Ù...Ø¹ÙŠÙ†Ø©.

ØªÙ... Ø¥Ù†Ø`Ø§Ø; Ø§Ù,,Ù...Ø¹Ù,,Ù`Ù...Ø§Øª Ø§Ù,,Ù`Ø§Ø±Ø`Ø© Ù`ÙŠ Ù‡Ø°ØS ØSÙ,,Ù...Ø³ØªÙ†Ø` Ù...Ù† ØSÙ,,Ø£Ø-Ù‡Ø²Ø© ØSÙ,,Ù...Ù`Ø-Ù`Ø`Ø© Ù`ÙŠ Ø`ÙŠØ!Ø© Ù...Ø¹Ù...Ù,,ÙŠØ© Ø®ØSØµØ©. Ø`Ø`Ø£Øª Ø-Ù...ÙŠØ¹ ØSÙ,,Ø£Ø-Ù‡Ø²Ø© ØSÙ,,Ù...Ù`Ø³ØªØ®Ø`Ù...Ø© Ù`ÙŠ Ù‡Ø°ØS ØSÙ,,Ù...Ø³ØªÙ†Ø` Ø`ØªÙfÙ`ÙŠÙ† Ù...Ù...Ø³Ù`Ø (ØSÙ`ØªØ±ØSØ¶ÙŠ). Ø¥Ø°ØS ÙfØSÙ†Øª Ø`Ø`ÙfØªÙf Ù,ÙŠØ` ØSÙ,,ØªØ`Ø`ÙŠÙ,,ØCE Ù`ØªØ£ÙfØ` Ù...Ù† Ù`Ù‡Ù...Ùf Ù,,Ù,,ØªØ£Ø«ÙŠØ± ØSÙ,,Ù...ØØªÙ...Ù,, Ù,,Ø£ÙŠ Ø£Ù...Ø±.

Ù...Ø¹Ù,,Ù`Ù...Ø§Øª Ø£Ø³Ø§Ø³ÙŠØ©

Ù†Ù...Ø§Ø°Ø`Ù†Ø´Ø± Ù...Ø¹Ø±Ù`Ø§Øª Cisco

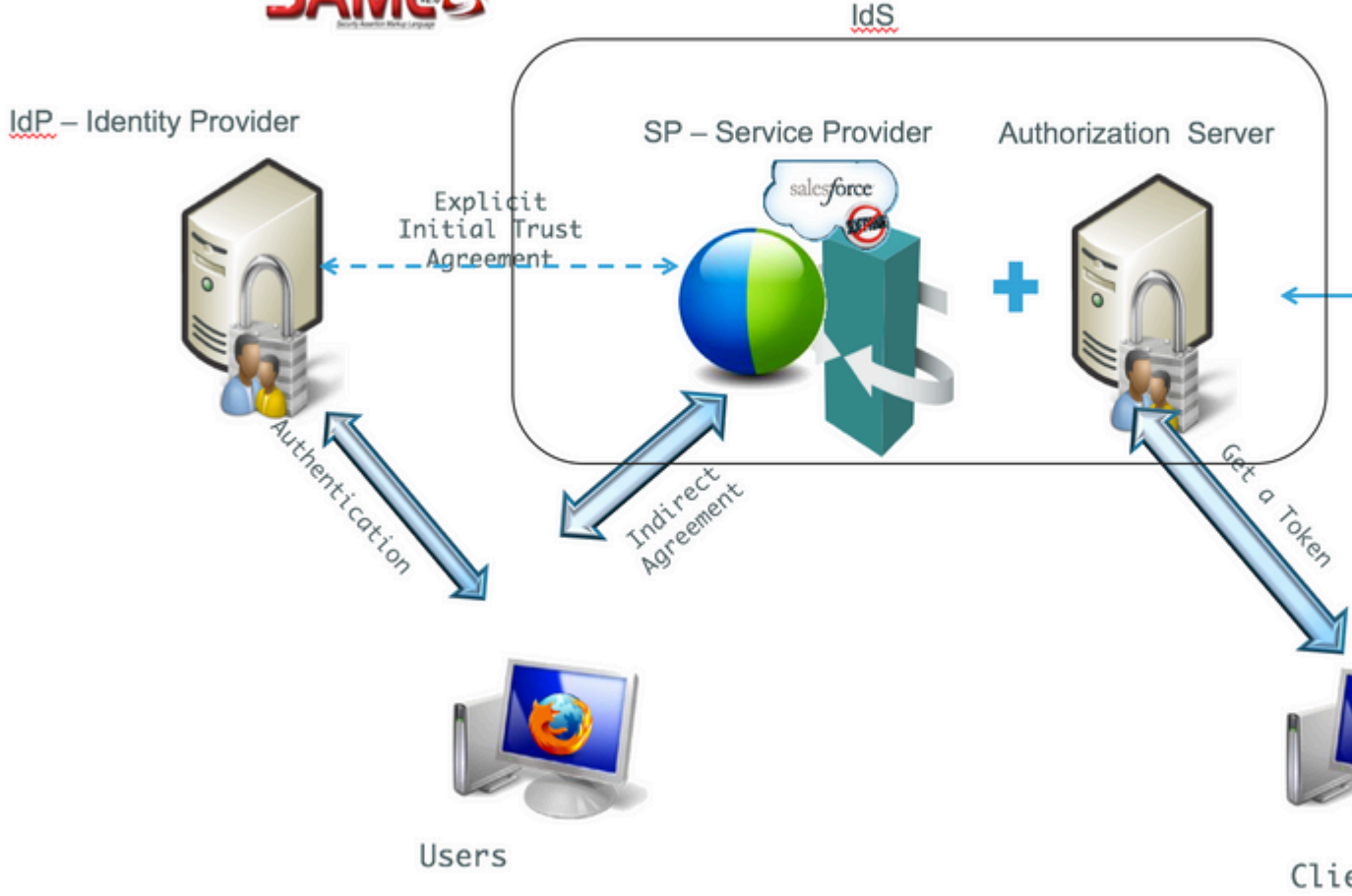
Ø§Ù,,Ù...Ù†ØªØ`	Ø§Ù,,Ù†Ø´Ø±
UCCX	Ù...Ù,ÙŠÙ... Ù...Ø`Ø§Ø±Ùf
PCCE	Ù...Ù,ÙŠÙ... Ù...Ø`ØªØ±Ùf Ù...Ø¹ CUIC (Cisco Unified Intelligence Center) Ù` LD (Ø`ÙŠØ§Ù†Ø§Øª Ù...Ø`Ø§Ø´Ø±Ø©)

UCCE	<p>Ù...Ø'Ø§Ø±Ùf Ù...Ù,ÙšÙ... Ù...Ø¹ CUIC Ù^ LD Ù,,Ø¹Ù...Ù,,ÙšØ§Øª Ù†Ø'Ø± 2k.</p> <p>Ù...Ø³ØªÙ,,Ù,,Ø© Ù,,Ø¹Ù...Ù,,ÙšØ§Øª Ø§Ù,,Ù†Ø'Ø± Ø§Ù,,ØªÙš ØªØ·Ù,,Ø° 4 Ø¶Ù,,Ø§Ù Ù^ 12 Ø£Ù,,Ù Ù¹Ù...Ù,,ÙšØ©.</p>
------	----------------------------------------------------------------------------------------------------------------------------------------------------------------------------------------------------

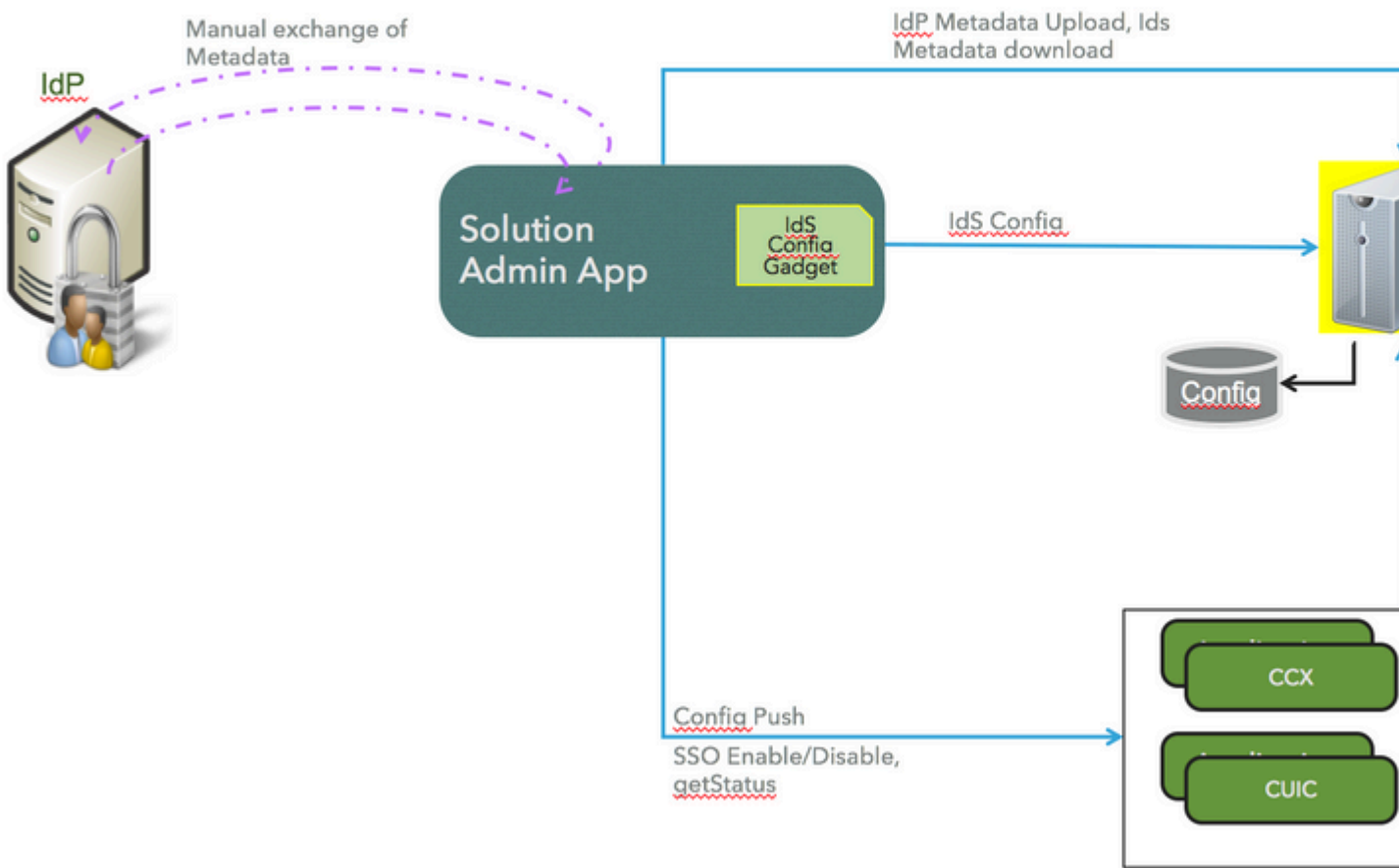
Ù†Ø,Ø±Ø© Ø¹Ø§Ù...Ø© Ø¹Ù,,Ù% SSO

ØªÙ^Ù Ù¹Ù Cisco Ø§Ù,,Ø¹Ø-ÙšØ- Ù...Ù† Ø§Ù,,Ø©Ø-Ù...Ø§Øª Ù Ùš Ù†Ù...Ø§Ø°Ø- Ù...Ø©ØªÙ,,Ù Ù¹ÙÙÙ...Ø³ØªØ©Ø-Ù... Ù†Ù†Ø§Ø! ÙšØ© ØªØ±ÙšØ- ØªØ³Ø-ÙšÙ,, Ø§Ù,,Ø-Ø©Ù^Ù,, Ù...Ø±Ø© Ù^Ø§ØØØ-Ø© Ù Ù¹Ù,Ø· Ù,,Ù,,ØØµÙ^Ù,, Ø¹Ù,,Ù% ØÙ, Ø§Ù,,Ù^ØµÙ^Ù,, Ø¶Ù,,Ù% Ø-Ù...ÙšØ¹ Ø©Ø-Ù...Ø§Øª Cisco. Ø¥Ø°Ø§ ÙfÙ†Øª ØªØ±Ø°Ù Ù Ùš Ø§Ù,,Ø¹Ø«Ù^Ø± Ø¹Ù,,Ù% Ø-Ù†Ø§Øª Ø§Ù,,Ø§ØªØµØ§Ù,, Ù^Ø¥Ø-Ø§Ø±ØªÙ†Ø§ Ù...Ù† Ø£Ùš Ù...Ù† ØªØ·Ø-ÙšÙ,,Ø§Øª Cisco Ù^Ø£Ø-Ù†Ø²ØªÙ†Ø§Ø© Ù ÙšÙ...ÙfÙ†Ùf Ø§Ù,,Ø§Ø³ØªÙ Ù¹ÙÙÙÙ Ù...Ù† Ø-Ù...ÙšØ¹ Ø§Ù,,Ù...ØµØ§Ø-Ø± Ø§Ù,,Ù...ØªÙ...Ù,,Ø© (Ø-Ù,,ÙšÙ,, Ø§Ù,,Ø'Ø±ÙfØ© Ù^ Outlook Ù^Ø-Ù†Ø§Øª Ø§ØªØµØ§Ù,, Ø§Ù,,Ù†Ù^Ø§ØªÙ Ù¹ÙÙÙÙÙÙ,,Ø© Ù^ Facebook Ù^ LinkedIn Ù^ History) Ù^ØªØ²Ù^ÙšØ-Ù†Ø§ ØªØ·Ø±ÙšÙ,,Ø© Ù,ÙšØ§Ø³ÙšØ© Ù^Ù...ØªØ³Ù,,Ø© ØªÙ^Ù Ù¹ÙÙÙÙÙÙÙ Ù...Ø¹Ù,,Ù^Ù...Ø§Øª Ø§Ù,,Ù...Ø·Ù,,Ù^Ø·Ø© Ù,,Ù...Ø¹Ø±Ù Ù¹ÙÙÙÙÙÙÙ Ù...Ø-Ù% ØªÙ^Ù Ù¹ÙÙÙÙÙÙÙ Ù¹ÙfÙšÙ Ù¹ÙÙÙÙÙÙÙ Ø§Ù,,Ø§ØªØµØ§Ù,, ØªÙ†Ø§ Ø¹Ù,,Ù% Ø£Ù Ù¹ÙÙÙÙÙÙÙ, Ù^Ø-Ù†.

Ù^ÙšØ³ØªÙ†Ø-Ù Ù¹Ù SSO ØªØ§Ø³ØªØ©Ø-Ø§Ù... SAML (Ù,,Ø°Ø© ØªÙ...ÙšÙšØ² ØªØ£ÙÙšØ- Ø§Ù,,Ø£Ù...Ø§Ù†) Ù†Ø°Ø§ Ø§Ù,,Ù...ØªØ·Ù,,Ø·. ØªÙ^Ù Ù¹ÙÙÙÙÙÙÙ SAML/SSO Ù,Ø-Ø±Ø© Ø§Ù,,Ù...Ø³ØªØ©Ø-Ù...ÙšÙ† Ø¹Ù,,Ù% ØªØ³Ø-ÙšÙ,, Ø§Ù,,Ø-Ø©Ù^Ù,, Ø¶Ù,,Ù% Ø£Ø-Ù†Ø²Ø© Ù^Ø©Ø-Ù...Ø§Øª Ù...ØªØ¹Ø-Ø-Ø© Ù...Ù† Ø©Ù,,Ø§Ù,, Ø³Ø§Øª Ù...Ø'ØªØ±Ùf Ù^Ù†Ù^ÙšØ© ØªØ©Ù^ÙšÙ,, ØªØ³Ù...Ù% IdP. Ù^ØªØªÙ^Ù Ù¹ÙÙÙÙÙÙÙ Ù¹ÙÙÙÙÙÙÙ ØªØ³Ø-ÙšÙ,, Ø§Ù,,Ø-Ø©Ù^Ù,, Ø§Ù,,Ù...Ù^ØØ-Ù Ù¹ÙÙÙÙÙÙÙ... UCCX/UCCE/PCCE Ø§Ù,,Ø¥ØµØ-Ø§Ø± 11.5 Ù^Ù...Ø§ ØªØ¹Ø-Ù†.



Ù†Ø,Ø±Ø© Ø'Ø§Ù...Ø© Ø'Ù,,Ù% Ø§Ù,,ØªÙfÙ^ÙŠÙ†



Ø§Ù,,ØªÙfÙ^ÙŠÙ†

Ø£Ù†Ù^Ø§Ø¹ Ø§Ù,,Ù...ØµØ§Ø²Ù,,Ø©

ØªØ±Ø¹Ù... Ù...Ø¹Ø±Ù ♦ Ø§Øª Cisco Ø§Ù,,Ù...ØµØ§Ø²Ù,,Ø© Ø§Ù,,Ù...Ø³ØªÙ†Ø²Ø© Ø¥Ù,,Ù% Ø§Ù,,Ù†Ù...Ù^Ø°Ø² Ù ♦ Ù,,Ù...Ø¹Ø±Ù ♦ IdPs.

Ø§Ø±Ø²Ø¹ Ø¥Ù,,Ù% Ù...Ù,,Ø§Ù,,Ø§Øª MSDN Ù†Ø°Ù† Ù,,Ù...Ø¹Ø±Ù ♦ Ø© ÙfÙŠÙ ♦ ÙŠØ© ØªÙ...ÙfÙŠÙ† Ù...ØµØ§Ø²Ù,,Ø© Ø§Ù,,Ù†Ù...Ù^Ø°Ø² Ù ♦ ÙŠ ADFS.

- Ø·Ø§Ù,,Ù†Ø³Ø²Ø© Ù,, ADFS 2.0Ø£ Ø§Ø±Ø²Ø¹ Ø¥Ù,,Ù% Ù...Ù,,Ø§Ù,,Ø© Microsoft TechNet Ù†Ø°Ù†Ø£ <http://social.technet.microsoft.com/wiki/contents/articles/1600.ad-fs-2-0-how-to-change-the-local-authentication-type.aspx>.
- Ø·Ø§Ù,,Ù†Ø³Ø²Ø© Ù,, ADFS 3.0Ø£ Ø§Ø±Ø²Ø¹ Ø¥Ù,,Ù% Ù...Ù,,Ø§Ù,,Ø© Microsoft TechNet Ù†Ø°Ù†Ø£ <https://learn.microsoft.com/en-us/archive/blogs/josrod/enabled-forms-based-authentication-in-adfs-3-0>

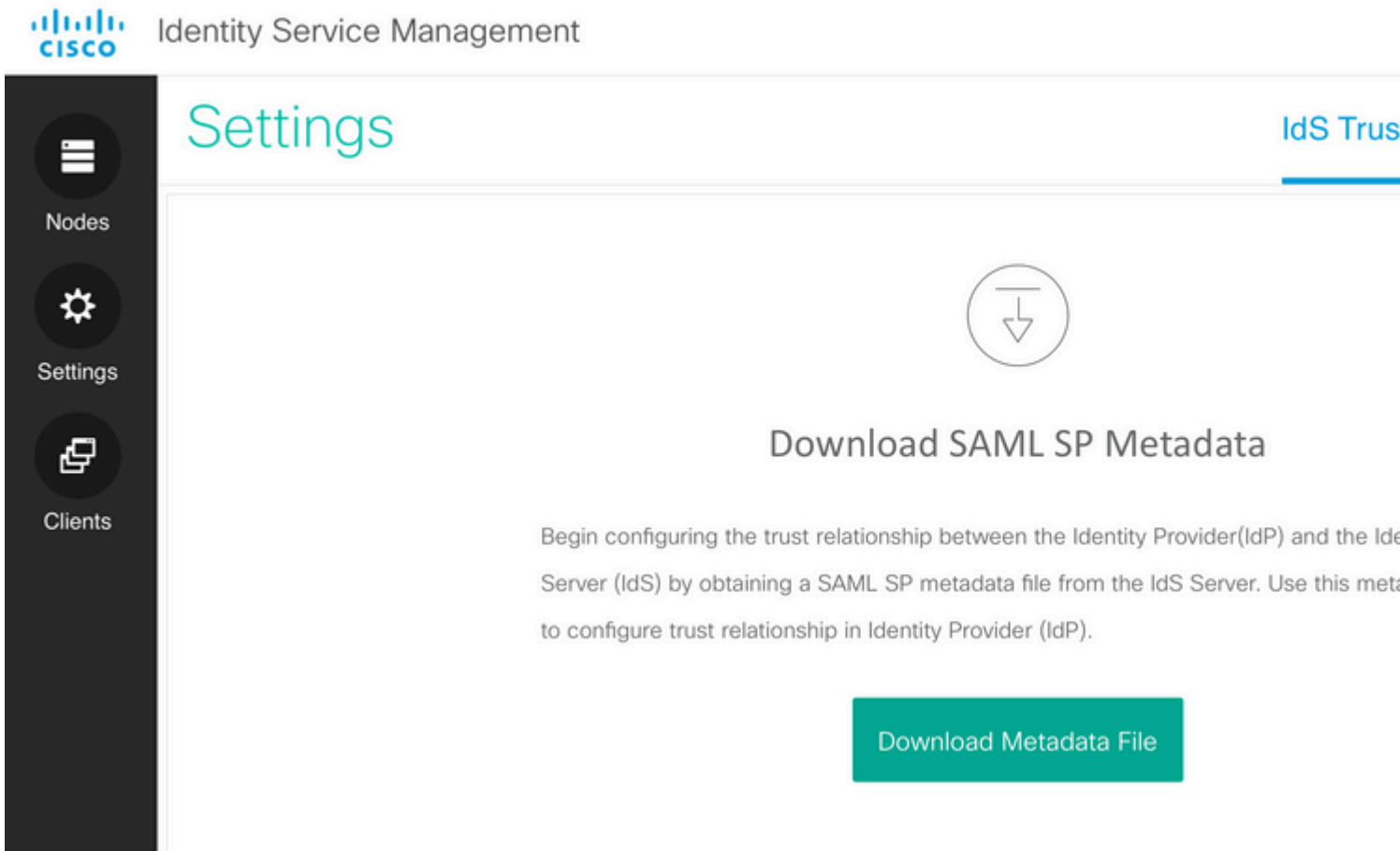
Ù...Ù,,Ø§ØØ,Ø©: ØªØ±Ø¹Ù... Ù...Ø¹Ø±Ù ♦ Ø§Øª Cisco Ø§Ù,,Ø¥ØµØ² Ø§Ø± 11.6 Ù^Ø§Ù,,Ø¥ØµØ² Ø§Ø±Ø§Øª Ø§Ù,,Ø£Ø²Ø²« ÙfÙ,, Ù...Ù† Ø§Ù,,Ù...ØµØ§Ø²Ù,,Ø©

Ø§Ù,,Ù...Ø³ØªÙ†Ø-Ø© Ø¥Ù,,Ù%Ø Ø§Ù,,Ù†Ù...Ù^Ø°Ø- Ù^Ù...ØµØ§Ø-Ù,Ø© Kerberos. Ù,,Ù†ÙŠ ØªØ¹Ù...Ù,, Ù...ØØ§Ø-Ù,Ø© KerberosØÆ ÙŠØ-Ø: ØªØ¹Ø-ÙŠÙ,, Ø§Ù,,Ù...ØØ§Ø-Ù,Ø© Ø§Ù,,Ù...Ø³ØªÙ†Ø-Ø© Ø¥Ù,,Ù%Ø Ø§Ù,,Ù†Ù...Ù^Ø°Ø-.

ØªØÆØ³ÙŠØ³ Ø¹Ù,,Ø§Ù,Ø© Ø«Ù,Ø©

Ù,,Ù,,Ø¥Ø-Ø±Ø§Ø- Ù^Ù,,ØªÙ...Ù†ÙŠÙ† Ø§Ù,,ØªØ-Ø-ÙŠÙ,Ø§Øª Ù...Ù† Ø¥Ø³ØªØ©Ø-Ø§Ù... Ù...Ø¹Ø±Ù Ø§Øª Cisco Ù,, SSOØÆ Ù,Ù... Ø¨Ø¥Ø-Ø±Ø§Ø; ØªØ¨Ø§Ø-Ù,, Ø¨ÙŠØ§Ù†Ø§Øª Ø§Ù,,ØªØ¹Ø±ÙŠÙ Ø¨ÙŠÙ† Ø§Ù,,Ù...Ø¹Ø±Ù Ø§Øª Ù^Ø§Ù,,Ù...Ø¹Ø±Ù Ø§Øª.

- ØªÙ†Ø²ÙŠÙ,, Ù...Ù,,Ù Ø¨ÙŠØ§Ù†Ø§Øª ØªØ¹Ø±ÙŠÙ SAML SP sp.xml.
- Ù...Ù† SettingsØÆ Ø§Ù†ØªÙ,Ù,, Ø¥Ù,,Ù%Ø IdS Trust Ø¹Ù,,Ø§Ù...Ø© Ø§Ù,,ØªØ-Ù^ÙŠØ- ÙÙŠ ØµÙØØ© Ø¥Ø-Ø§Ø±Ø© Ø§Ù,,Ù...Ø¹Ø±Ù Ø§Øª.



- Ù,Ù... ØªÙ†Ø²ÙŠÙ,, Ù...Ù,,Ù Ø¨ÙŠØ§Ù†Ø§Øª ØªØ¹Ø±ÙŠÙ IdP Ù...Ù† IdP Ù...Ù† Ø¹Ù†Ù^Ø§Ù† URL: <https://<ADFS>/federationmetadata/2007-06/federationmetadata.xml>
- ÙÙŠ ØµÙØØ© Ø¥Ø-Ø§Ø±Ø© Ø§Ù,,Ù...Ø¹Ø±Ù Ø§ØªØÆ Ù,Ù... ØªØªÙ...ÙŠÙ,, Ù...Ù,,Ù Ø¨ÙŠØ§Ù†Ø§Øª ØªØ¹Ø±ÙŠÙ IdP Ø§Ù,,Ø°ÙŠ ØªÙ... ØªÙ†Ø²ÙŠÙ,,Ù† ÙÙŠ Ø§Ù,,ØªØ-Ù^Ø© Ø§Ù,,Ø³Ø§Ø-Ù,Ø©.



Settings



Nodes



Settings



Clients



Upload IdP Metadata

Establish the trust relationship between the Identity Provider (IdP) and the Identity Service by obtaining a trust metadata file from the IdP and uploading it here.

Use [file browser](#) to upload the file.

Upload IdP Metadata... ADFS 2.0 ADFS 3.0

Upload IdP Metadata... ADFS 2.0

1. Start > All Programs > Administrative Tools > ADFS 2.0 Management Console > Upload IdP Metadata

- Administrative Tools
 - Active Directory Administrative Center
 - Active Directory Domains and Trusts
 - Active Directory Module for Windows Po
 - Active Directory Sites and Services
 - Active Directory Users and Computers
 - AD FS 2.0 Management**
 - ADSI Edit
 - Certification Authority
 - Component Services
 - Computer Management
 - Data Sources (ODBC)
 - DNS
 - Event Viewer
 - Group Policy Management
 - Internet Information Services (IIS) Man.
 - iSCSI Initiator
 - Local Security Policy
 - Performance Monitor
 - Security Configuration Wizard
 - Server Manager



Administrator

Documents

Computer

Network

Control Panel

Devices and Printers

Administrative Tools ▶

Help and Support

Run...

Windows Security

◀ Back

Search programs and files



Log off ▶

Start



Add Relying Party Trust Wizard

Select Data Source

Steps

- Welcome
- Select Data Source
- Choose Issuance Authorization Rules
- Ready to Add Trust
- Finish

Select an option that this wizard will use to obtain data about this relying party.

- Import data about the relying party published online or on a local network.
Use this option to import the necessary data and certificates from a relying party that publishes its federation metadata online or on a local network.

Federation metadata address (host name or URL):

Example: fs.contoso.com or https://www.contoso.com/app

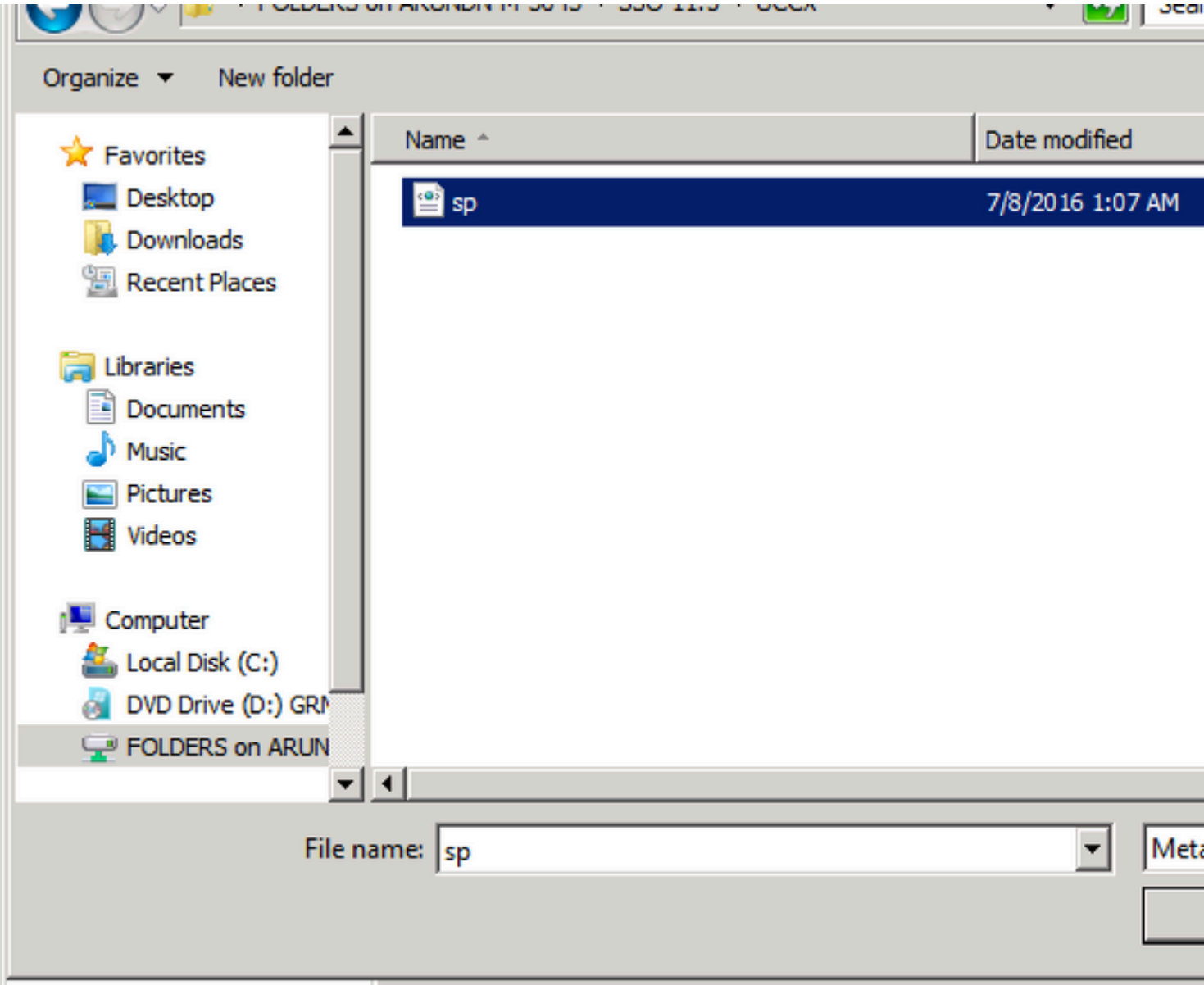
- Import data about the relying party from a file.
Use this option to import the necessary data and certificates from a relying party that has exported its federation metadata to a file. Ensure that this file is from a trusted source and do not validate the source of the file.

Federation metadata file location:

- Enter data about the relying party manually.
Use this option to manually input the necessary data about this relying party.

< Previous

Next >



Organize ▾ New folder

- ★ Favorites
 - Desktop
 - Downloads
 - Recent Places

- Libraries
 - Documents
 - Music
 - Pictures
 - Videos

- Computer
 - Local Disk (C:)
 - DVD Drive (D:) GRM
 - FOLDERS on ARUN

Name ▲	Date modified
--------	---------------

 sp	7/8/2016 1:07 AM
--------------------------------------------------------------------------------------	------------------

File name:

Meta

Specify Display Name

Steps

- Welcome
- Select Data Source
- Specify Display Name
- Choose Issuance Authorization Rules
- Ready to Add Trust
- Finish

Type the display name and any optional notes for this relying party.

Display name:

Notes:

< Previous

Next >

Add Relying Party Trust Wizard

Choose Issuance Authorization Rules

Steps

- Welcome
- Select Data Source
- Specify Display Name
- Choose Issuance Authorization Rules**
- Ready to Add Trust
- Finish

Issuance authorization rules determine whether a user is permitted to receive claims from this relying party. Choose one of the following options for the initial behavior of this relying party's issuance authorization rules.

- Permit all users to access this relying party**
The issuance authorization rules will be configured to permit all users to access this relying party service or application. However, the relying party service or application may still deny the user access.
- Deny all users access to this relying party**
The issuance authorization rules will be configured to deny all users access to this relying party service or application. You can later add issuance authorization rules to enable any users to access this relying party service or application.

You can change the issuance authorization rules for this relying party trust by clicking **Edit Claim Rules** in the **Actions** pane.

< Previous

Next >

0x00000000 4. 0x00000000...0x00000000, 0x00000000; 0x00000000, 0x00000000...0x00000000 0x00000000
0x00000000...0x00000000,

Add Relying Party Trust Wizard

Finish

Steps

- Welcome
- Select Data Source
- Specify Display Name
- Choose Issuance Authorization Rules
- Ready to Add Trust
- Finish

The relying party trust was successfully added to the AD FS configuration database. You can modify this relying party trust by using the Properties dialog box in the console snap-in.

- Open the Edit Claim Rules dialog for this relying party trust when the wizard finishes.

5. The relying party trust was successfully added to the AD FS configuration database. You can modify this relying party trust by using the Properties dialog box in the console snap-in. You can also open the Edit Claim Rules dialog for this relying party trust when the wizard finishes.

Relying Party Trusts

Display Name	Enabled	Identifier
fs.	Yes	uccx115p.uccx115eft.com

- Update from Federation Metadata...
- Edit Claim Rules...
- Disable
- Properties**
- Delete
- Help

fs.sso.com Properties

Accepted Claims

Organization

Endpoints

Notes

Advanced

Monitoring

Identifiers

Encryption

Signature

Specify the display name and identifiers for this relying party trust.

Display name:

Relying party identifier:

Add

Example: <https://fs.contoso.com/adfs/services/trust>

Relying party identifiers:

uccx115p.uccx115eft.com

Remove

OK

Cancel

Apply

Help

ØSÙ,,Ù...Ø±Ù‡Ù,, Ø` ØSÙ,,ÙfØSÙ...Ù,, Ù,,Ø@ØSØ`Ù... Ø°Ø¹Ø±ÙŠÙ◆ Cisco ØSÙ,,Ø°ÙŠ ÙŠØ°Ù...
Ù...Ù† Ø@Ù,,ØSÙ,,Ù‡ sp.xml Ø°Ù... Ø°Ù†Ø²ÙŠÙ,,Ù‡.

fs.sso.com Properties

Accepted Claims

Organization

Endpoints

Notes

Advanced

Monitoring

Identifiers

Encryption

Signature

Specify the display name and identifiers for this relying party trust.

Display name:

uccx.contoso.com



Relying party identifier:

Add

Example: <https://fs.contoso.com/adfs/services/trust>

Relying party identifiers:

uccx115p.uccx115eft.com

Remove

OK

Cancel

Apply

Help

Trust Ø«Ù... Ø§Ù†Ù,Ø± Ù◊Ù^Ù, Edit Claim Rules.

ÙŠØ-Ø· Ø¥Ø¶Ø§Ù◊Ø© Ù,Ø§Ø¹Ø-ØªÙŠ Ù...Ø·Ø§Ù,,Ø· Ø©Øœ Ø§Ù,,Ø£Ù^Ù,,Ù%º Ù±ÙŠ
Ø¹Ù†Ø-Ù...Ø§ ØªØªÙ... Ù...Ø·Ø§Ø· Ù,Ø© Ø³Ù...Ø§Øª LDAP (Ø· Ø±Ù^ØªÙ^ÙÙ^Ù,,
Ø§Ù,,Ù^ØµÙ^Ù,, Ø¥Ù,,Ù%º Ø§Ù,,Ø-Ù,,ÙŠÙ,, Ø®Ù◊ÙŠÙ◊ Ø§Ù,,Ù^Ø²Ù†) Ø· ÙŠÙ†Ù...Ø§
ØªÙÙÙ^Ù† Ø§Ù,,Ø«Ø§Ù†ÙŠØ© Ù...Ù† Ø®Ù,,Ø§Ù,, Ù,Ù^Ø§Ø¹Ø- Ù...Ø·Ø§Ù,,Ø· Ø©
Ù...Ø®ØµØµØ©.

uid - Ù‡Ø°Ù‡ Ø§Ù,,Ø³Ù...Ø© Ù...Ø·Ù,,Ù^Ø·Ø© Ù,,Ù,,ØªØ·Ø·ÙŠÙ,Ø§Øª Ù,,ØªØØ-ÙŠØ-
Ø§Ù,,Ù...ØªØªØ®Ø-Ù... Ø§Ù,,Ù...ØØ-Ù, Ø¹Ù,,ÙŠÙ‡.

user_principal - ÙŠÙ,,Ø²Ù... Ø£Ù† ØªÙÙÙ^Ù† Ù‡Ø°Ù‡ Ø§Ù,,Ø³Ù...Ø© Ø·Ù^Ø§Ø³Ø·Ø©
Ù...Ø¹Ø±Ù◊Ø§Øª Cisco Ù,,ØªØØ-ÙŠØ- Ù...Ø-Ø§Ù,, Ø§Ù,,Ù...ØªØªØ®Ø-Ù... Ø§Ù,,Ø°ÙŠ
ØªÙ...Øª Ù...ØµØ§Ø-Ù,ØªÙ‡.

Ù,Ø§Ø¹Ø-Ø© Ø§Ù,,Ù...Ø·Ø§Ù,,Ø·Ø© 1:

Ø¥Ø¶Ø§Ù◊Ø© Ù,Ø§Ø¹Ø-Ø© Ø· Ø§Ù,,Ø§Ø³Ù... NameID Ù...Ù† Ø§Ù,,Ù†Ù^Ø¹ (Ù,Ù...
Ø·Ø¥Ø±Ø³Ø§Ù,, Ù,ÙŠÙ... ØªÙ...Ø© LDAP ÙÙÙ...Ø·Ø§Ù,,Ø·Ø§Øª):

- Ø¥Ø®ØªÙŠØ§Ø± Ù...Ø®Ø²Ù† Ø§Ù,,Ø³Ù...Ø§Øª ÙfActive Directory
- ØªØ¹ÙŠÙŠÙ† Ø³Ù...Ø© LDAP User-Principal-Name Ø¥Ù,,Ù%º user_principal (Ø§Ù,,ØØ±Ù^Ù◊ Ø§Ù,,ØµØ°ÙŠØ±Ø©)
- Ø£Ø®ØªØª Ø³Ù...Ø© LDAP Ø§Ù,,ØªÙŠ ÙŠØ-Ø· Ø¥Ø³ØªØ®Ø-Ø§Ù...Ù‡Ø§ Ùf
userId Ù,,Ù...Ø³ØªØ®Ø-Ù...ÙŠ Ø§Ù,,ØªØ·Ø·ÙŠÙ, Ù,,ØªØ³Ø-ÙŠÙ,, Ø§Ù,,Ø-Ø®Ù^Ù,,
Ù^ØªØ®Ø-ÙŠØ·Ù‡ Ø¥Ù,,Ù%º uid (Ø§Ù,,ØØ±Ù^Ù◊ Ø§Ù,,ØµØ°ÙŠØ±Ø©)

Ù...Ø«Ø§Ù,, Ø¹Ù,,Ù%º Ø§Ù,,ØªÙÙÙ^ÙŠÙ† Ø¹Ù†Ø- SamAccountName Ù‡Ù^ Ø£Ù† ÙŠØªÙ...
Ø¥Ø³ØªØ®Ø-Ø§Ù...Ù‡ ÙÙÙ...Ø¹Ø±Ù◊ Ø§Ù,,Ù...Ø³ØªØ®Ø-Ù...:

- ØªØ¹ÙŠÙŠÙ† Ø³Ù...Ø© LDAP SamAccountName Ø¥Ù,,Ù%º uid.
- ØªØ¹ÙŠÙŠÙ† Ø³Ù...Ø© LDAP User-Principal-Name Ø¥Ù,,Ù%º user_principal.

Ù...Ø«Ø§Ù,, Ø¹Ù,,Ù%º Ø§Ù,,ØªÙÙÙ^ÙŠÙ† Ø¹Ù†Ø- UPN ÙŠØ-Ø· Ø¥Ø³ØªØ®Ø-Ø§Ù...Ù‡
ÙÙÙ...Ø¹Ø±Ù◊ Ø§Ù,,Ù...Ø³ØªØ®Ø-Ù...:

- ØªØ¹ÙŠÙŠÙ† Ø³Ù...Ø© LDAP User-Principal-Name Ø¥Ù,,Ù%º uid.
- ØªØ¹ÙŠÙŠÙ† Ø³Ù...Ø© LDAP User-Principal-Name Ø¥Ù,,Ù%º user_principal.

Ù...Ø«Ø§Ù,, Ø¹Ù,,Ù%º Ø§Ù,,ØªÙÙÙ^ÙŠÙ† Ø¹Ù†Ø- PhoneNumber ÙŠØ-Ø· Ø¥Ø³ØªØ®Ø-Ø§Ù...Ù‡
ÙÙÙ...Ø¹Ø±Ù◊ Ø§Ù,,Ù...Ø³ØªØ®Ø-Ù...:

- ØªØ¹ÙŠÙŠÙ† Ø±Ù,Ù... Ù‡Ø§ØªÙ◊ Ø³Ù...Ø© LDAP Ø¥Ù,,Ù%º uid .
- ØªØ¹ÙŠÙŠÙ† Ø³Ù...Ø© LDAP User-Principal-Name Ø¥Ù,,Ù%º user_principal.



- AD FS 2.0
 - Service
 - Trust Relationships
 - Claims Provider Trusts
 - Relying Party Trusts**
 - Attribute Stores

Relying Party Trusts

Edit Claim Rules for fs.sso.com

Issuance Transform Rules | Issuance Authorization Rules | Delegation A

The following transform rules specify the claims that will be sent to the r

Order	Rule Name	Issued Claims
-------	-----------	---------------

Add Rule... Edit Rule... Remove Rule...

OK Cancel

Select Rule Template

Steps

- Choose Rule Type
- Configure Claim Rule

Select the template for the claim rule that you want to create from the following. The following table provides details about each claim rule template.

Claim rule template:

Send LDAP Attributes as Claims

Claim rule template description:

Using the Send LDAP Attribute as Claims rule template you can select attributes from a data store such as Active Directory to send as claims to the relying party. Multiple attributes can be sent as multiple claims from a single rule using this rule type. For example, you can use this rule to create a rule that will extract attribute values for authenticated users from the telephoneNumber Active Directory attributes and then send those values as telephoneNumber claims. This rule may also be used to send all of the user's group memberships as claims. For individual group memberships, use the Send Group Membership as a Claim rule template.

[Tell me more about this rule template...](#)

< Previous

Next >

Configure Rule

Steps

- Choose Rule Type
- Configure Claim Rule**

You can configure this rule to send the claims which to extract LDAP attributes. Specify the claims issued from the rule.

Claim rule name:

NameID

Rule template: Send LDAP Attributes a

Attribute store:

Active Directory

Mapping of LDAP attributes to outgoing

	LDAP Attribute
	User-Principal-Name
▶	SAM-Account-Name
*	

: ùšø-ø· ø§ù,,ø³ø£ùfø- ù...ù† øªø·ø§ø·ù, ø³ù...ø© LDAP ø§ù,,øªùš øªù...
øªùfù·ùšù†ù‡ø§ ù,,ù...ø¹ø±ù ø§ù,,ù...ø³øªøøø-ù... ù øùš ù...ø²ø§ù...ù†ø©
CUCM LDAP ù...ø¹ ù...ø§ øªù... øªùfù·ùšù†ù‡ ùfø³ù...ø© LDAP ù,, uid ù øùš
ù,ø§ø¹ø-ø© ù...ø·ø§ù,,ø· ø© ADFS NameID. ù‡ø°ø§ ù...ù† ø£ø-ù,, ø§ù,,ø¹ù...ù,,
ø§ù,,ø³ù,,ùšù... ù,,ù...ø-øøù,, CUIC ù^ Finesse.

ù...ù,,ø§øøøøø: ùšø·ùšø± ù‡ø°ø§ ø§ù,,ù...ø³øªù†ø- ø¥ù,,ù% ø§ù,,ù,ùšù·ø-
ø§ù,,ù...ù ø±ù·ø¶ø© ø¹ù,,ù% ø§ø³ù... ù,ø§ø¹ø-ø© ø§ù,,ù...ø·ø§ù,,ø· ø©
ù·ùšø¹ø±ø¶ ø£ø³ù...ø§ø; ù...ø«ù,, NameID ù^ø§ø³ù... ø§ù,,ù...ø-ø§ù,,
ø§ù,,ù...ø±ù‡ù,, ø· ø§ù,,ùfø§ù...ù,, (FQDN) ù...ù† UCCX ù^ù...ø§ ø¥ù,,ù% ø°ù,,ùf.
ù·ø¹ù,,ù% ø§ù,,ø±ø°ù... ù...ù† ø¥ù...ùfø§ù†ùšø© øªø·ø· ùšù, ø§ù,,øù,ù^ù,,
ù^ø§ù,,ø£ø³ù...ø§ø; ø§ù,,ù...øøøµøµø© ø¹ù,,ù% ø£ù,ø³ø§ù...
ù...øøøªù,,ù ø©øœ ù ø¥ù† ø£ø³ù...ø§ø; ù,ù^ø§ø¹ø- ø§ù,,ù...ø·ø§ù,,ø· ø§øª
ù^ø£ø³ù...ø§ø; ø§ù,,ø¹ø±ø¶ øªø·ù,ù% ù,ùšø§ø³ùšø© ø·ù^ø§ù,, ø§ù,,ù^ù,øª
ù,,ù,,øù ø§ø, ø¹ù,,ù% ø§ù,,ø§øªø³ø§ù, ù^ù,,ø£ù ø¶ù,, ø§ù,,ù...ù...ø§ø±ø³ø§øª
ù øùš ù,ø§ø¹ø-ø© ø§ù,,øªø³ù...ùšø©.

Cisco Unified CM Administration
For Cisco Unified Communications Solutions

System ▾ Call Routing ▾ Media Resources ▾ Advanced Features ▾ Device ▾ Application ▾ User Management ▾ Bulk Administration ▾

LDAP System Configuration

Save

Status

Status: Ready

LDAP System Information

Enable Synchronizing from LDAP Server

LDAP Server Type: Microsoft Active Directory ▾

LDAP Attribute for User ID: sAMAccountName ▾

Save

ù,ø§ø¹ø-ø© ø§ù,,ù...ø·ø§ù,,ø·ø© ø§ù,,ø«ø§ù†ùšø©:

- ø£ø¶ù øù,ø§ø¹ø-ø© ø£øøø±ù% ù...ù† ù†ù·ø¹ ù,ø§ø¹ø-ø© ù...ø·ø§ù,,ø· ø©
ù...øøøµøµø© ø· ø§ù,,ø§ø³ù... ùfø§ø³ù... ø§ù,,ù...ø¶ùšù ø§ù,,ù...ø±ù‡ù,,
ø· ø§ù,,ùfø§ù...ù,, ù,,øøøøø-ù... øªø¹ø±ùšù ø Cisco ù^ø£ø¶ù ù†øµ
ø§ù,,ù,ø§ø¹ø-ø© ù‡ø°ø§.

```
c:[Type == "http://schemas.microsoft.com/ws/2008/06/identity/claims/windowsaccountname"] => issue
```


Select Rule Template

Steps

- Choose Rule Type
- **Configure Claim Rule**

Select the template for the claim rule that you want to create from the following list. The list provides details about each claim rule template.

Claim rule template:

Send Claims Using a Custom Rule

Claim rule template description:

Using a custom rule, you can create rules that can't be created with a rule template written in the AD FS 2.0 claim rule language. Capabilities that require custom rules:

- Sending claims from a SQL attribute store
- Sending claims from an LDAP attribute store using a custom LDAP filter
- Sending claims from a custom attribute store
- Sending claims only when 2 or more incoming claims are present
- Sending claims only when an incoming claim value matches a complex pattern
- Sending claims with complex changes to an incoming claim value
- Creating claims for use only in later rules

[Tell me more about this rule template...](#)

< Previous

Next >

Add Transform Claim Rule Wizard

Configure Rule

Steps

- Choose Rule Type
- Configure Claim Rule

You can configure a custom claim rule, such as a rule that requires multiple in-claims from a SQL attribute store. To configure a custom rule, type one or more issuance statements using the AD FS 2.0 claim rule language.

Claim rule name:

uccx.contoso.com

Rule template: Send Claims Using a Custom Rule

Custom rule:

```
c:[Type ==  
"http://schemas.microsoft.com/ws/2008/06/identity/claims/  
ntname"] => issue (Type =  
"http://schemas.xmlsoap.org/ws/2005/05/identity/claims/  
", Issuer = c.Issuer, OriginalIssuer = c.OriginalIss  
c.Value, ValueType = c.ValueType, Properties  
["http://schemas.xmlsoap.org/ws/2005/05/identity/claims/  
at"] = "urn:oasis:names:tc:SAML:2.0:nameid-format:tr  
Properties  
["http://schemas.xmlsoap.org/ws/2005/05/identity/claims/  
qualifier"] = "http://fs.sso.com/adfs/services/trust  
["http://schemas.xmlsoap.org/ws/2005/05/identity/claims/  
mequalifier"] = "uccx.contoso.com");
```

[More about the claim rule language...](#)

< Previous

Finish

8. Relying Party Trust Properties

fs.sso.com Properties

Monitoring

Identifiers

Encryption

Signature

Accepted Claims

Organization

Endpoints

Notes

Advanced

Specify the secure hash algorithm to use for this relying party trust.

Secure hash algorithm:

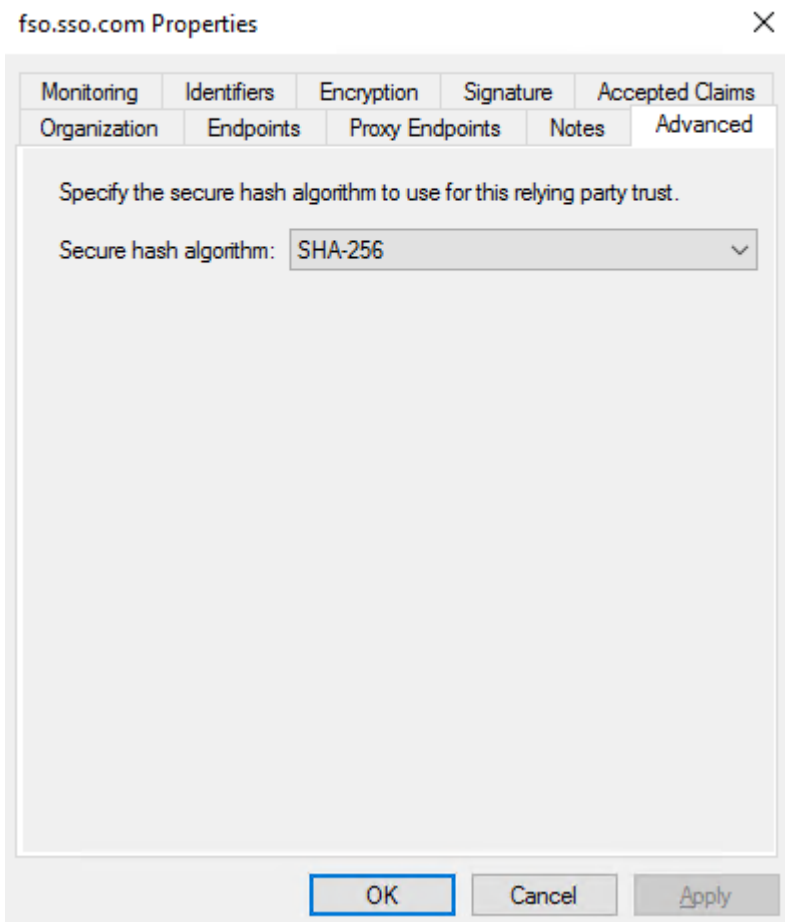
OK

Cancel

Apply

Help

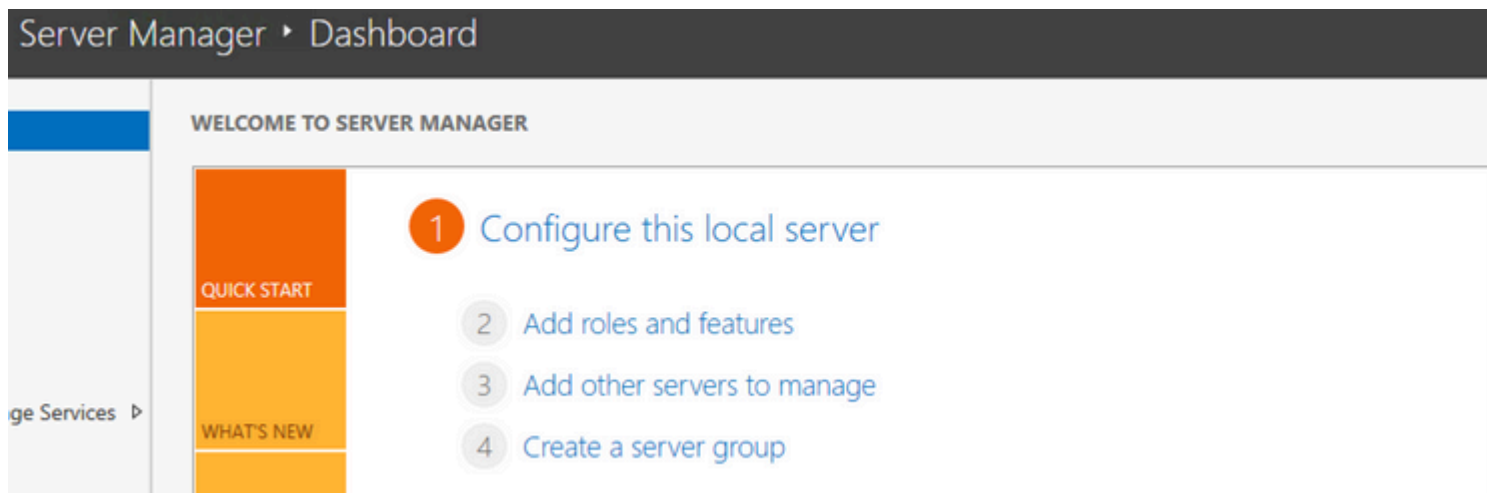
9. Specify the secure hash algorithm to use for this relying party trust. (SHA) SHA-256.



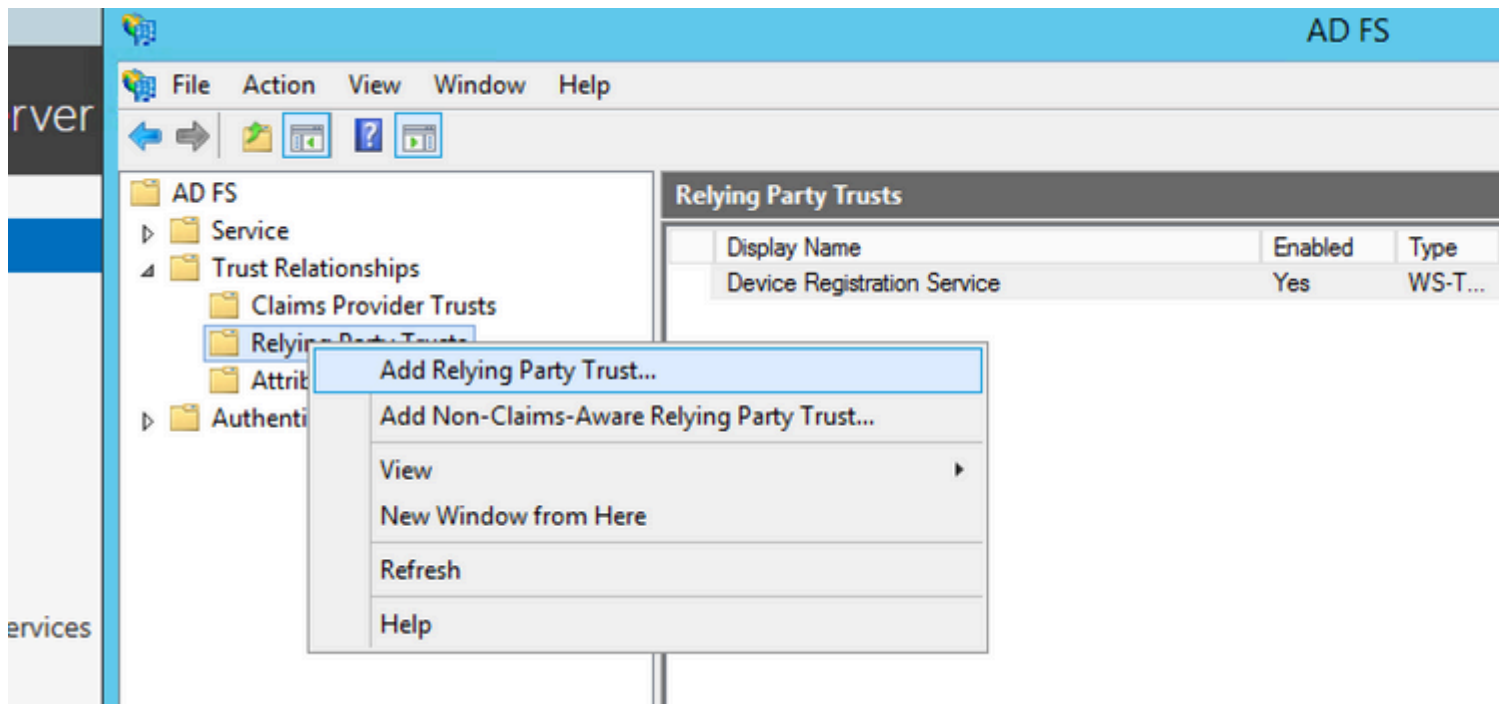
10. Click OK.

ADFS 3.0

1. Server Manager > Tools > ADFS Management.



Step 2. ADFS > Trust Relationship > Relying Party Trust.



Step 3. Import data about the relying party from a file.



Add Relying Party Trust Wizard

Welcome

Steps

- Welcome
- Select Data Source
- Configure Multi-factor Authentication Now?
- Choose Issuance Authorization Rules
- Ready to Add Trust
- Finish

Welcome to the Add Relying Party Trust Wizard

This wizard will help you add a new relying party trust to the AD FS configuration to consume claims in security tokens that are issued by this Federation Service for authorization decisions.

The relying party trust that this wizard creates defines how this Federation Service issues claims to the relying party and issues claims to it. You can define issuance transform rules for issuance after you complete the wizard.

< Previous



Add Relying Party Trust Wizard

Select Data Source

Steps

- Welcome
- Select Data Source
- Configure Multi-factor Authentication Now?
- Choose Issuance Authorization Rules
- Ready to Add Trust
- Finish

Select an option that this wizard will use to obtain data about this relying party.

- Import data about the relying party published online or on a local network.

Use this option to import the necessary data and certificates from a relying party that has published its federation metadata online or on a local network.

Federation metadata address (host name or URL):

Example: fs.contoso.com or https://www.contoso.com/app

- Import data about the relying party from a file.

Use this option to import the necessary data and certificates from a relying party that has exported its federation metadata to a file. Ensure that this file is from a trusted source and that you can validate the source of the file.

Federation metadata file location:

- Enter data about the relying party manually.

Use this option to manually input the necessary data about this relying party.

< Previous

Add Relying Party Trust Wizard

Browse for Metadata File...



<< SSO 11.5 >> Pod1



Search

Organize ▾

New folder



Downloads



Recent places



This PC



Desktop



Documents



Downloads



FOLDERS on ARU



Music



Pictures



Videos



Local Disk (C:)



DVD Drive (D:) IR

Name

Date modified

sp

8/18/2016 8:26 PM

File name:

sp

Metad

< Previous



Add Relying Party Trust Wizard

Specify Display Name

Steps

- Welcome
- Select Data Source
- Specify Display Name
- Configure Multi-factor Authentication Now?
- Choose Issuance Authorization Rules
- Ready to Add Trust
- Finish

Enter the display name and any optional notes for this relying party.

Display name:

Notes:

< Previous



Add Relying Party Trust Wizard

Steps

- Welcome
- Select Data Source
- Specify Display Name
- **Configure Multi-factor Authentication Now?**
- Choose Issuance Authorization Rules
- Ready to Add Trust
- Finish

Configure multi-factor authentication settings for this relying party trust. Multi-factor authentication is required if there is a match for any of the specified requirements.

Multi-factor Authentication

Requirements	Users/Groups	Not configured
	Device	Not configured
	Location	Not configured

- I do not want to configure multi-factor authentication settings for this relying party trust.
- Configure multi-factor authentication settings for this relying party trust.

You can also configure multi-factor authentication settings for this relying party trust in the **Authentication Policies** node. For more information, see [Configuring Authentication Policies](#).

< Previous

Add Relying Party Trust Wizard

Choose Issuance Authorization Rules

Steps

- Welcome
- Select Data Source
- Specify Display Name
- Configure Multi-factor Authentication Now?
- Choose Issuance Authorization Rules**
- Ready to Add Trust
- Finish

Issuance authorization rules determine whether a user is permitted to receive claims from this relying party. Choose one of the following options for the initial behavior of this relying party:

- Permit all users to access this relying party
The issuance authorization rules will be configured to permit all users to access this relying party. However, the relying party service or application may still deny the user access.
- Deny all users access to this relying party
The issuance authorization rules will be configured to deny all users access to this relying party. You can later add issuance authorization rules to enable any users to access this relying party.

You can change the issuance authorization rules for this relying party trust by clicking **Edit Claim Rules** in the **Actions** pane.

< Previous

0800-400-0000 4. 0800-400-0000...0800-400-0000; 0800-400-0000, 0800-400-0000...0800-400-0000
0800-400-0000...0800-400-0000

Relying Party Trusts

Display Name	Enabled	Type	Identifier
Device Registration Service	Yes	WS-T...	um.ms-drs.fs
uccx115p1.toi.com	Yes	WS-T...	uccx115p1.t

- Update from Federation Metadata...
- Edit Claim Rules...
- Disable
- Properties**
- Delete
- Help

uccx115p1.toi.com Properties

Organization

Endpoints

Proxy Endpoints

Notes

Advanced

Monitoring

Identifiers

Encryption

Signature

Accepted Claims

Specify the display name and identifiers for this relying party trust.

Display name:

Relying party identifier:

Add

Example: <https://fs.contoso.com/adfs/services/trust>

Relying party identifiers:

Remove

OK

Cancel

Apply

Ø§Ù,,Ø®Ø·Ù^Ø© 6. Ù,Ù... Ø·ØªØ¹ÙŠÙŠÙ† Ø§Ù,,Ù...Ø¹Ø±Ù◆ ÙfØ§Ø³Ù... Ø§Ù,,Ù...Ø¶ÙŠÙ◆
Ø§Ù,,Ù...Ø±Ù‡Ù,, Ø· Ø§Ù,,ÙfØ§Ù...Ù,, Ù,,Ø®Ø§Ø¯Ù... ØªØ¹Ø±ÙŠÙ◆ Cisco Ø§Ù,,Ø°ÙŠ ÙŠØªÙ...
Ù...Ù† Ø®Ù,,Ø§Ù,,Ù‡ sp.xml ØªÙ... ØªÙ†Ø²ÙŠÙ,,Ù‡.

uccx115p1.toi.com Properties

Organization	Endpoints	Proxy Endpoints	Notes	Advanced
Monitoring	Identifiers	Encryption	Signature	Accepted Claims

Specify the display name and identifiers for this relying party trust.

Display name:

uccx.contoso.com



Relying party identifier:

Add

Example: <https://fs.contoso.com/adfs/services/trust>

Relying party identifiers:

uccx115p1.toi.com

Remove

OK

Cancel

Apply

◆ 00 ù,0s0¹0-0ªùš ù...0·0sù,,0· 000E 0sù,,0£ù^ù,,ù%0 ù±ùš 0¹ù+0-ù...0s 0ª0ªù... ù...0·0s0-ù,00 0³ù...0s0ª LDAP 0-ùšù+ù...0s 0ªùfù^ù+ 0sù,,0«0sù+ùš00 ù...ù+ 0®ù,,0sù,, ù,ù^0s0¹0- ù...0·0sù,,0· 00 ù...0®0µ0µ00.

uid - ù‡0°ù‡ 0sù,,0³ù...00 ù...0·ù,,ù^0·00 ù,,ù,,0ª0·0-ùšù,0s0ª ù,,0ª0¹0±ùšù◆
0sù,,ù...0³0ª0®0-ù... 0sù,,ù...0µ0-ù, 0¹ù,,ùšù‡.

user_principal - ùšù,,0²ù... 0£ù+ 0ªùfù^ù+ ù‡0°ù‡ 0sù,,0³ù...00 0-ù^0s0³0·00
ù...0¹0±ù◆0s0ª Cisco ù,,0ª00-ùš0- ù...0-0sù,, 0sù,,ù...0³0ª0®0-ù... 0sù,,0°ùš
0ªù...0ª ù...0µ0s0-ù,0ªù‡.

ù,0s0¹0-00 0sù,,ù...0·0sù,,0·00 1:

0¥0®0sù◆00 ù,0s0¹0-00 0· 0sù,,0s0³ù... NameID ù...ù+ ù+ù^0¹ (0¥0±0³0sù,, ù,ùšù...
0³ù...00 LDAP ùfù...0·0sù,,0·0s0ª):

- 0¥0®0ªùš0s0± ù...0®0²ù+ 0sù,,0³ù...0s0ª ùfActive Directory
- 0ª0¹ùšùšù+ 0³ù...00 LDAP User-Principal-Name 0¥ù,,ù%0 user_principal (0sù,,00±ù^ù◆
0sù,,0µ0°ùš0±00)
- 0£0®0ª0± 0³ù...00 LDAP 0sù,,0ªùš ùš0-0· 0¥0³0ª0®0-0sù...ù‡0s ùf
userId ù,,ù...0³0ª0®0-ù...ùš 0sù,,0ª0·0-ùšù, ù,,0ª0³0-ùšù,, 0sù,,0-0®ù^ù,,
ù^0ª0®0·ùš0·ù‡ 0¥ù,,ù%0 uid(0sù,,00±ù^ù◆ 0sù,,0µ0°ùš0±00)

ù...0«0sù,, 0¹ù,,ù%0 0sù,,0ªùfù^ùšù+ 0¹ù+0- SamAccountName ù‡ù^ 0£ù+ ùš0ªù...
0¥0³0ª0®0-0sù...ù‡ ùfù...0¹0±ù◆ ù...0³0ª0®0-ù...:

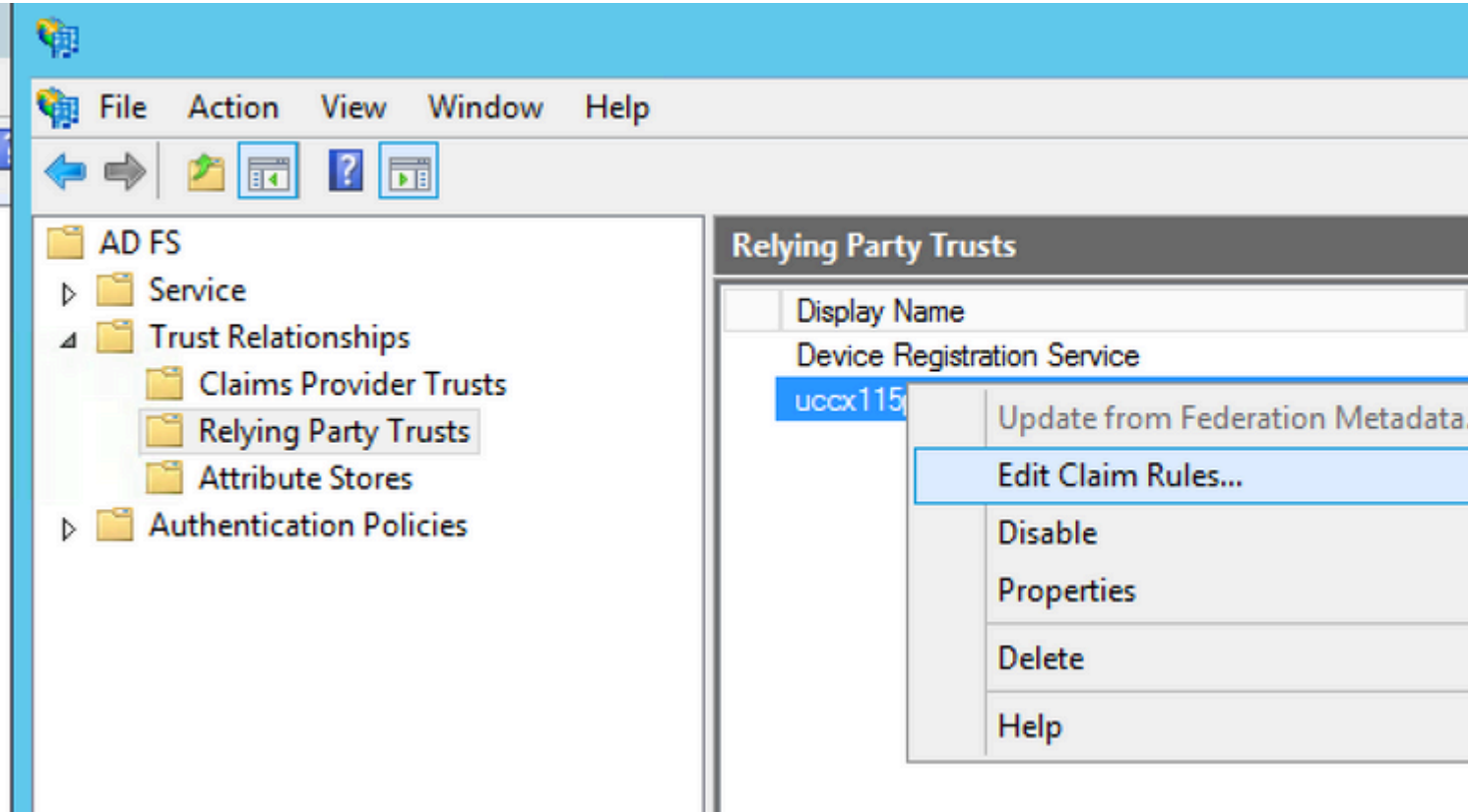
- 0ª0¹ùšùšù+ 0³ù...00 LDAP SamAccountName 0¥ù,,ù%0 uid.
- 0ª0¹ùšùšù+ 0³ù...00 LDAP User-Principal-Name 0¥ù,,ù%0 user_principal.

ù...0«0sù,, 0sù,,0ªùfù^ùšù+ 0¹ù+0-ù...0s ùš0-0· 0¥0³0ª0®0-0sù... UPN ùfù...0¹0±ù◆
ù...0³0ª0®0-ù...:

- 0ª0¹ùšùšù+ 0³ù...00 LDAP User-Principal-Name 0¥ù,,ù%0 uid.
- 0ª0¹ùšùšù+ 0³ù...00 LDAP User-Principal-Name 0¥ù,,ù%0 user_principal.

ù...0«0sù,, 0¹ù,,ù%0 0sù,,0ªùfù^ùšù+ 0¹ù+0- PhoneNumber ùš0-0· 0¥0³0ª0®0-0sù...ù‡
ùfù...0¹0±ù◆ 0sù,,ù...0³0ª0®0-ù...:

- 0ª0¹ùšùšù+ 0³ù...00 LDAP telephoneNumber 0¥ù,,ù%0 uid.
- 0ª0¹ùšùšù+ 0³ù...00 LDAP User-Principal-Name 0¥ù,,ù%0 user_principal.



Help

File Action View Window Help

AD FS

- Service
- Trust Relationships
 - Claims Provider Trusts
 - Relying Party Trusts

Relying Party Trusts

Display Name
Device Registration Service
uccx115p1.toi.com

Edit Claim Rules for uccx115p1.toi.com

Issuance Transform Rules | Issuance Authorization Rules | Delegation Authorization Rules

The following transform rules specify the claims that will be sent to the relying party.

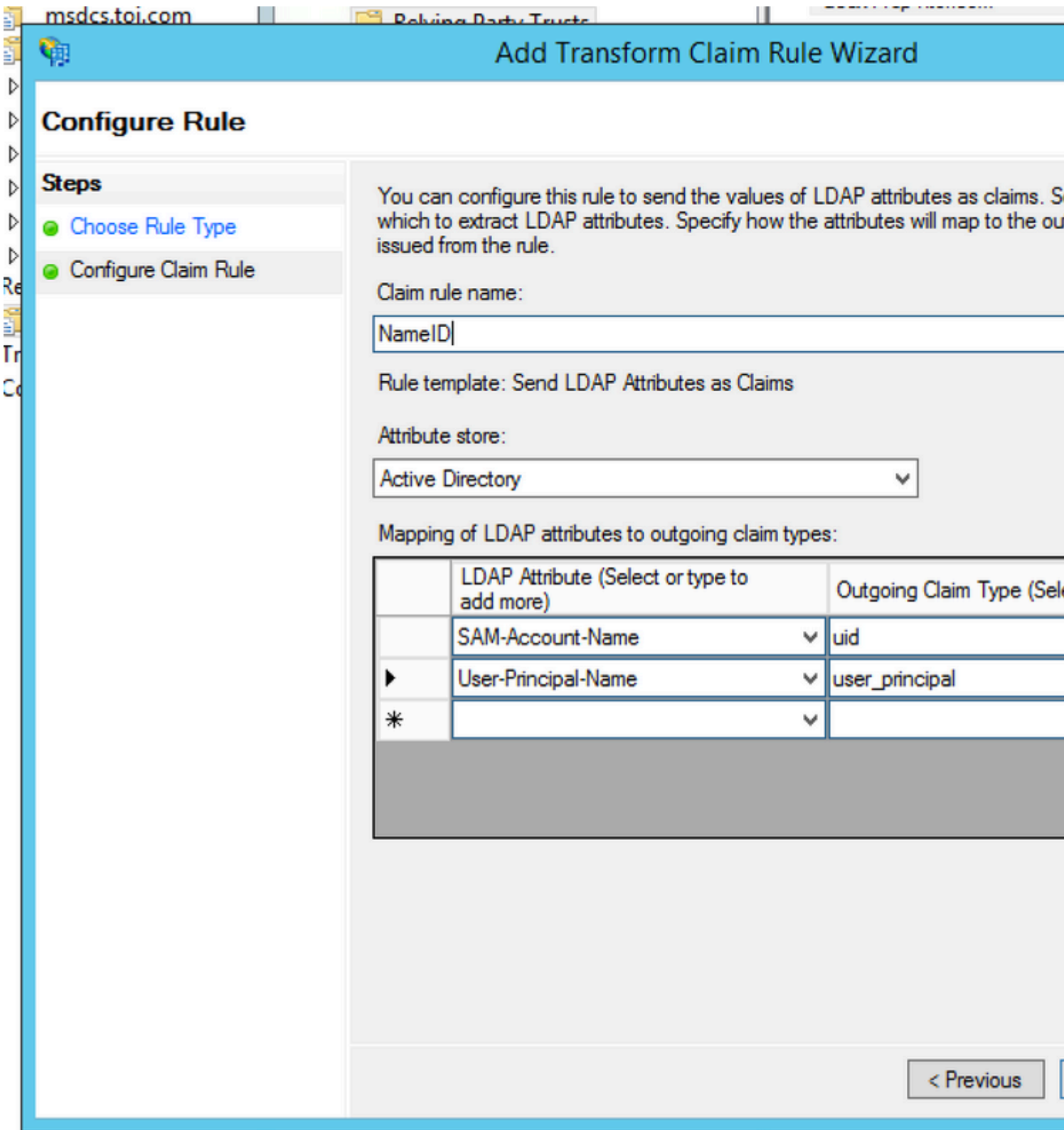
Order	Rule Name	Issued Claims
-------	-----------	---------------

↑

↓

Add Rule... Edit Rule... Remove Rule...

OK Cancel Apply



Ú...Ú,,Ø§ØØ,Ø©: ùšØ-Ø· Ø§Ù,,ØªØ£ÙfØ- Ù...Ù† ØªØ·Ø§ØØ·Ù, Ø³Ù...Ø© LDAP Ø§Ù,,ØªÙš
 ØªÙ... ØªÙfÙ^ÙšÙ†Ù‡Ø§ Ù,,Ù...Ø¹Ø±Ù ♦ Ø§Ù,,Ù...Ø³ØªØ©Ø-Ù... Ù ♦ Ùš
 Ù...Ø²Ø§Ù...Ù†Ø© CUCM LDAP Ù...Ø¹ Ù...Ø§ ØªÙ... ØªÙfÙ^ÙšÙ†Ù‡ ÙfØ³Ù...Ø© LDAP
 Ù,, uid Ù ♦ Ùš NameID Ù,,Ù,Ø§Ø¹Ø-Ø© Ù...Ø·Ø§Ù,,Ø·Ø© ADFS. Ù‡Ø°Ø§ Ù...Ù† Ø£Ø-Ù,,

Ø§Ù,,Ù^Ø,ÙŠÙ❖Ø© Ø§Ù,,Ù...Ù†Ø§Ø³Ø´ Ø© Ù,,ØªØ³Ø-ÙŠÙ,, Ø-Ø®Ù^Ù,, CUIC Ù^ Finesse.

Ù...Ù,,Ø§ØØ,Ø©: ÙŠØ´ÙŠØ± Ù±Ø°Ø§ Ø§Ù,,Ù...Ø³ØªÙ†Ø- Ø¥Ù,,Ù% Ø§Ù,,Ù,,ÙŠÙ^Ø- Ø§Ù,,Ù...Ù❖Ø±Ù^Ø¶Ø© Ø¹Ù,,Ù% Ø§Ø³Ù... Ù,Ø§Ø¹Ø-Ø© Ø§Ù,,Ù...Ø·Ø§Ù,,Ø´ Ø© Ù^Ø£Ø³Ù...Ø§Ø; Ø§Ù,,Ø¹Ø±Ø¶ Ù...Ø«Ù,, NameID Ù^ FQDN Ù,, UCCX Ù^Ù...Ø§ Ø¥Ù,,Ù% Ø°Ù,,Ùf. Ù^Ø¹Ù,,Ù% Ø§Ù,,Ø±Ø°Ù... Ù...Ù† Ø¥Ù...ÙfØ§Ù†ÙŠØ© ØªØ´ ÙŠÙ, Ø§Ù,,ØÙ,Ù^Ù,, Ù^Ø§Ù,,Ø£Ø³Ù...Ø§Ø; Ø§Ù,,Ù...Ø®ØµØµØ© Ø¹Ù,,Ù% Ù...Ø®ØªÙ,,Ù❖ Ø§Ù,,Ø£Ù,Ø³Ø§Ù...Ø£ Ù❖Ø¥Ù† Ø£Ø³Ù...Ø§Ø; Ù,Ù^Ø§Ø¹Ø- Ø§Ù,,Ù...Ø·Ø§Ù,,Ø´ Ø§Øª Ù^Ø£Ø³Ù...Ø§Ø; Ø§Ù,,Ø¹Ø±Ø¶ ØªØ´ Ù,Ù% Ù,ÙŠØ§Ø³ÙŠØ© Ø·Ù^Ø§Ù,, Ø§Ù,,Ù^Ù,Øª Ù...Ù† Ø£Ø-Ù,, Ø§Ù,,Ù...ØØ§Ù❖Ø,Ø© Ø¹Ù,,Ù% Ø§Ù,,Ø§ØªØ³Ø§Ù, Ù^Ø¹Ù,,Ù% Ø£Ù❖Ø¶Ù,, Ø§Ù,,Ù...Ù...Ø§Ø±Ø³Ø§Øª Ù❖ÙŠ Ù,Ø§Ø¹Ø-Ø© Ø§Ù,,ØªØ³Ù...ÙŠØ©.

The screenshot shows the Cisco Unified CM Administration web interface. At the top, there is a navigation menu with items: System, Call Routing, Media Resources, Advanced Features, Device, Application, and User Management. The main heading is "LDAP System Configuration". Below this, there is a "Status" section with an information icon and the text: "Please Delete All LDAP Directories Before Making Changes on This Page". The "LDAP System Information" section contains a checked checkbox for "Enable Synchronizing from LDAP Server". Below this are two dropdown menus: "LDAP Server Type" set to "Microsoft Active Directory" and "LDAP Attribute for User ID" set to "userPrincipalName". At the bottom of the configuration area, there is another information icon and the text: "*- indicates required item."

Ù,Ø§Ø¹Ø-Ø© Ø§Ù,,Ù...Ø·Ø§Ù,,Ø´Ø© Ø§Ù,,Ø«Ø§Ù†ÙŠØ©:

- Ø£Ø¶Ù❖ Ù,Ø§Ø¹Ø-Ø© Ø£Ø®Ø±Ù% Ù...Ù† Ù†Ù^Ø¹ Ù,Ø§Ø¹Ø-Ø© Ù...Ø·Ø§Ù,,Ø´Ø© Ù...Ø®ØµØµØ© Ø´Ø§Ù,,Ø§Ø³Ù... ÙfØ§Ø³Ù... Ø§Ù,,Ù...Ø¶ÙŠÙ❖ Ø§Ù,,Ù...Ø±Ù±Ù,, Ø´Ø§Ù,,ÙfØ§Ù...Ù,, Ù,,Ø®Ø§Ø-Ù... ØªØ¹Ø±ÙŠÙ❖ Cisco Ù^Ø£Ø¶Ù❖ Ù†Øµ Ø§Ù,,Ù,Ø§Ø¹Ø-Ø© Ù±Ø°Ø§.

```
c:[Type == "http://schemas.microsoft.com/ws/2008/06/identity/claims/windowsaccountname"] => issue(
```

- Ù❖ÙŠ Ø§Ù,,Ù...Ø-Ù...Ù^Ø¹Ø© Cisco Identity ServerØ£ ØªÙfÙ^Ù† Ø-Ù...ÙŠØ¹ Ø£Ø³Ù...Ø§Ø; Ø§Ù,,Ù...Ø¶ÙŠÙ❖ Ø§Ù,,Ù...Ø±Ù±Ù,,Ø© Ø´Ø§Ù,,ÙfØ§Ù...Ù,, Ù±ÙŠ ØªÙ,,Ùf Ø§Ù,,Ø®Ø§ØµØ© Ø´Ø¹Ù,Ø-Ø© Cisco Identity Server Ø§Ù,,Ø£Ø³Ø§Ø³ÙŠØ© Ø£Ù^

Ø¹Ù,Ø¯Ø© Ø§Ù,,Ù†Ø§Ø´Ø±.

- ÙˆÙŠØ¹ØªØ± <emQualified name Ù,,Ø®Ø§Ø¯Ù... ØªØ¹Ø±ÙŠÙ Cisco> ØØ³Ø§Ø³Ø§ Ù,,Ø§Ù,,Ø© Ø§Ù,,Ø£ØØ±ÙØØÙ Ù,,Ø°Ù,,Ùf ÙØØØÙ†Ù‡ ÙŠØªØ·Ø§Ø¯Ù, ØªÙ...Ø§Ù...Ø§ (ÙØÙŠ Ø§Ù,,Ø§Ù,,Ø© Ø§Ù,,Ù...Ø¶Ù...Ù†Ø©) Ù...Ø¹ FQDN Ù,,Ø®Ø§Ø¯Ù... Ù‡ÙˆÙŠØ© Cisco.
- <ADFS Server FQDN> ØØ³Ø§Ø³ Ù,,Ø§Ù,,Ø© Ø§Ù,,Ø£ØØ±ÙØØÙ Ù,,Ø°Ù,,Ùf ÙØØØÙ†Ù‡ ÙŠØªØ·Ø§Ø¯Ù, (Ø§Ù,,Ø§Ù,,Ø© Ø§Ù,,Ù...Ø¶Ù...Ù†Ø©) ØªÙ...Ø§Ù...Ø§ Ù...Ø¹ ADFS FQDN.

msdcs.toi.com | Reliving Data Trusts

Add Transform Claim Rule Wizard

Select Rule Template

Steps

- Choose Rule Type
- Configure Claim Rule**

Select the template for the claim rule that you want to create from the following details about each claim rule template.

Claim rule template:

Send Claims Using a Custom Rule

Claim rule template description:

Using a custom rule, you can create rules that can't be created with a rule written in the AD FS claim rule language. Capabilities that require custom rules include:

- Sending claims from a SQL attribute store
- Sending claims from an LDAP attribute store using a custom LDAP filter
- Sending claims from a custom attribute store
- Sending claims only when 2 or more incoming claims are present
- Sending claims only when an incoming claim value matches a complex pattern
- Sending claims with complex changes to an incoming claim value
- Creating claims for use only in later rules

< Previous

Edit Rule - uccx115p1.toi.com

You can configure a custom claim rule, such as a rule that requires multiple incoming claims claims from a SQL attribute store. To configure a custom rule, type one or more optional conditions and an issuance statement using the AD FS claim rule language.

Claim rule name:

uccx.contoso.com

Rule template: Send Claims Using a Custom Rule

Custom rule:

```
c:[Type ==  
"http://schemas.microsoft.com/ws/2008/06/identity/claims/windows  
name"]  
=> issue (Type =  
"http://schemas.xmlsoap.org/ws/2005/05/identity/claims/nameid",  
Issuer = c.Issuer, OriginalIssuer = c.OriginalIssuer, Value =  
c.Value, ValueType = c.ValueType, Properties  
["http://schemas.xmlsoap.org/ws/2005/05/identity/claimproperty:  
name-qualifier"] = "urn:oasis:names:tc:SAML:2.0:nameid-format:transient", Properties  
["http://schemas.xmlsoap.org/ws/2005/05/identity/claimproperty:  
name-qualifier"] = "http://fs.contoso.com/adfs/services/trust", Properties  
["http://schemas.xmlsoap.org/ws/2005/05/identity/claimproperty:  
name-qualifier"] = "uccx.contoso.com");
```

OK

: Ù,,Ø§ ØØ§Ø-Ø© Ø¥Ù,,Ù% Ø§Ù,,Ø®Ø·Ù·Ø© 2. Ø¥Ø°Ø§ ÙfÙ†Øª ØªØ³ØªØ®Ø·Ù... ADFS 3.0 Ù,,Ø£Ù† CmdLet Ù...Ø«Ø·Øª Ø·Ø§Ù,,ÙØ¹Ù,, ÙfØ-Ø²Ø; Ù...Ù† Ø¥Ø¶Ø§Ø§ÙØ© Ø§Ù,,Ø£Ø·Ù·Ø§Ø± Ù·Ø§Ù,,Ù...Ù§Ø²Ø§Øª.

Ù...Ù,,Ø§ØØ,Ø©:

ØØ³Ø§Ø³Ø© Ù,,ØØ§Ù,,Ø© Ø§Ù,,Ø£ØØ±ÙØ© Ù,,Ø°Ù,,Ùf ØªØªØ·Ø§Ø·Ù, (Ø§Ù,,Ø§Ù,,Ø© Ø§Ù,,Ù...Ø¶Ù...Ù†Ø©) Ù...Ø¹ Ù...Ø§ ØªÙ... ØªØ¹Ù§Ù§Ù†Ù‡ ÙØ¹Ø¹ Ø¹Ù,,Ø§Ù...Ø© Ø§Ù,,ØªØ·Ù·Ù§Ø· "Ù...Ø¹Ø±ÙØ" Ù,,Ø®ØµØ§Ø; Øµ "Ø«Ù,,Ø© Ø§Ù,,Ø·Ø±ÙØ Ø§Ù,,Ù...Ø¹Ù·Ù,,".

Ù...Ù,,Ø§ØØ,Ø©: Ù...Ù† UCCXØ© Ø§Ù,,Ø¥ØØ-Ø§Ø± 12.0 Ù...Ù† Ù...Ø¹Ø±ÙØØ§Øª Cisco ØªØ·Ø¹Ù... SHA-256. Ù·ØªØ³ØªØ®Ø·Ù... Ø«Ù,,Ø© Ø§Ù,,Ø·Ø±ÙØ Ø§Ù,,Ù...Ø¹Ù·Ù,, SHA-256 Ù,,ØªÙ·Ù,Ù§Ø¹ Ø·Ù,,Ø SAML Ù·ØªØªÙ·Ù,Ø¹ Ù†ÙØ³ Ø§Ù,,Ø§Ø³ØªØ-Ø§Ø·Ø© Ù...Ù† ADFS.

Ù,,ØªÙfÙ·Ù§Ù† Ù...ØªØ¹Ø·Ø· Ø§Ù,,Ù...Ø-Ø§Ù,,Ø§Øª Ù,, ADFS Ø§Ù,,Ù...ØªØØ·

ÙØ¹Ø¹ ØØ§Ù,,Ø© Ø§Ù,,Ø§ØªØØØØ· ÙØ¹Ø¹ ADFSØ© ØØ§Ø« ØªÙ·ÙØ± ADFS ÙØ¹Ø¹ Ù...Ø-Ø§Ù,, Ù...Ø¹Ù§Ù† Ù...ØµØ§Ø·Ù,,Ø© SAML Ø§Ù,,Ù...Ù·ØØ·Ø© Ù,,Ù,,Ù...Ø³ØªØ®Ø·Ù...Ù§Ù† ÙØ¹Ø¹ Ù...Ø-Ø§Ù,,Ø§Øª Ø£Ø®Ø±Ù% ØªÙ... ØªÙfÙ·Ù§Ù†Ù‡Ø§Ø© ØªÙfÙ·Ù† Ù‡Ø°Ù‡ Ø§Ù,,ØªÙfÙ·Ù§Ù†Ø§Øª Ø¥Ø¶Ø§Ø§ÙØ¹Ø¹Ø¹ Ù...Ø·Ù,,Ù·Ø·Ø©.

Ø·Ø§Ù,,Ù†Ø³Ø·Ø© Ù,,Ù‡Ø°Ø§ Ø§Ù,,Ù,Ø³Ù...Ø© Ù§Ø·Ù§Ø± Ù...ØØ·Ù,,Ø ADFS Ø§Ù,,Ø£Ø³Ø§Ø³Ù§ Ø¥Ù,,Ù% ADFS Ø§Ù,,ØªÙ§ Ù§Ø-Ø· Ø¥Ø³ØªØ®Ø·Ø§Ù...Ù‡Ø§ ÙØ¹Ø¹ Ø§Ù,,Ù...Ø¹Ø±ÙØØ§Øª. Ù§Ø·Ù§Ø± Ù...ØµØ·Ù,,Ø ADFS Ø§Ù,,Ù...ØªØØ· Ø¥Ù,,Ù% ADFSØ© Ù·Ø§Ù,,ØªÙ§ Ù§Ù...ÙfÙ† Ù,,Ù...Ø³ØªØ®Ø·Ù...Ù§Ù‡Ø§ ØªØ³Ø-Ù§Ù,, Ø§Ù,,Ø·Ø®Ù·Ù,, Ù...Ù† Ø®Ù,,Ø§Ù,, Ù...Ø¹Ø±ÙØØ§Øª Ù·Ø·Ø§Ù,,ØªØ§Ù,,Ù§Ø© ØªÙfÙ·Ù† ADFS Ø§Ù,,Ø£Ø³Ø§Ø³Ù§Ø©.

ØªÙfÙ·Ù§Ù† ADFS Ø§Ù,,Ù...ØªØØ·

Ù·ÙØ¹Ø¹ ÙfÙ,, Ù...Ù† Ù‡Ø°Ù‡ Ø§Ù,,Ù...ÙfØ§ØªØ·Ø© Ù§Ø-Ø· Ø¥Ù†Ø·Ø§Ø; ØµÙ†Ø·Ù·Ù, Ø«Ù,,Ø© Ø§Ù,,Ø·Ø±ÙØ Ø§Ù,,Ù...Ø¹Ù·Ù,, Ù...Ù† Ø£Ø-Ù,, Ù,Ù·Ø§Ø¹Ø·Ø§Ù,,Ù...Ø·Ø§Ù,,Ø·Ø§Øª Ø§Ù,,Ø±Ø;Ù§Ø³Ù§Ø© Ù·Ù,Ù·Ø§Ø¹Ø·Ø§Ù,,Ù...Ø·Ø§Ù,,Ø·Ø§Øª Ø§Ù,,ØªÙ§ ØªÙ... ØªÙfÙ·Ù§Ù†Ù‡Ø§Ø¹Ù,,Ù% Ø§Ù,,Ù†Ø·Ù·Ø§Ù,,Ù...Ø°ÙfÙ·Ø± ÙØ¹Ø¹ Ø§Ù,,ÙØ±Ø¹ Ø§Ù,,Ø³Ø§Ø·Ù,,.

ØªÙfÙ·Ù§Ù† ADFS Ø§Ù,,Ø£Ø³Ø§Ø³Ù§

Ø·Ø§Ù,,Ù†Ø³Ø·Ø© Ù,, ADFS Ø§Ù,,Ø£Ø³Ø§Ø³Ù§Ø©Ø© Ø·Ø®Ù,,Ø§Ù "Ø«Ù,,Ø© Ø§Ù,,Ø·Ø±ÙØ Ø§Ù,,Ù...Ø¹ØªÙ...Ø·" Ø·Ø§Ù,,Ù...Ø¹Ø±ÙØØ§ØªØ© Ù§Ù,,Ø²Ù... Ù‡Ø°Ø§ Ø§Ù,,ØªÙfÙ·Ù§Ù† Ø§Ù,,Ø¥Ø¶Ø§Ø§ÙØ¹Ø¹.

Ø¥Ø¶Ø§Ø§ÙØ¹Ø¹ Claim Provider Trust Ø·Ø§Ø³ØªØ®Ø·Ø§Ù... ADFS Ø§Ù,,ØªÙ§ Ù§Ø-Ø· Ø¥Ø¹Ø·Ø·Ø§Ø·Ø§Ù,,Ø§ØªØØ§Ø· Ù,,Ù‡Ø§.

Ù◆ÙŠ Ø«Ù,Ø© Ù...Ù^Ù◆Ø± ØSÙ,,Ù...Ø·ØSÙ,,Ø´ ØSØªØ£ ØªØ£ÙfØ¬ Ù...Ù† Ø£Ù† Pass through or Filter an Incoming Claim ÙŠØªÙ... ØªÙfÙ^ÙŠÙ† Ø§Ù,,Ù,Ù^Ø§Ø¹Ø¬ Ù...Ø¹ ØªÙ...Ø±ÙŠØ± ÙfØ§Ù◆Ø© Ù,ÙŠÙ... ØSÙ,,Ù...Ø·ØSÙ,,Ø´ ØSØª ÙfØ®ÙŠØSØ±:

- Ù...Ø¹Ø±Ù◆ ØSÙ,,ØSØ³Ù...
- Ø£Ø®ØªØ± Ù...Ø¹Ø±Ù◆ ØSÙ,,ØSØ³Ù... Ù...Ù† Incoming Claim Type Øµ†Ø¬Ù^Ù, Ø§Ù,,Ø¥Ø³Ù,Ø§Ø.
- Ù†Ø®ØªØ§Ø± Transient ÙfØ®ÙŠØ§Ø± Ù,,ØªÙ†Ø³ÙŠÙ, NameID Ø§Ù,,Ù^Ø§Ø±Ø¬
- UID: Ù‡Ø°Ù‡ Ù...Ø·Ø§Ù,,Ø´Ø© Ù...Ø®ØØØ©. Ø£Ø¬Ø®Ù,, Ù...Ø¹Ø±Ù◆ ØSÙ,,Ù,ÙŠÙ...Ø© Ù◆ÙŠ Incoming Claim Type Øµ†Ø¬Ù^Ù, Ø§Ù,,Ø¥Ø³Ù,Ø§Ø.
- user_principal: Ù‡Ø°Ù‡ Ù...Ø·Ø§Ù,,Ø´Ø© Ù...Ø®ØØØ©. Ø§ÙfØªØ¬ value user_principal Ù◆ÙŠ Incoming Claim Type Øµ†Ø¬Ù^Ù, Ø§Ù,,Ø¥Ø³Ù,Ø§Ø.

Ù◆ÙŠ Ø«Ù,Ø© Ø¬Ù‡Ø© ØSÙ,,ØSØ¹ØªÙ...ØSØ¬ Ø´ ØSÙ,,Ù...Ø¹Ø±Ù◆ØSØªØ£ Ø£Ø¶Ù◆ Pass through or Filter an Incoming Claim Ù,Ù^Ø§Ø¹Ø¬ Ù...Ø¹ ØªÙ...Ø±ÙŠØ± ÙfØ§Ù◆Ø© Ù,ÙŠÙ... ØSÙ,,Ù...Ø·ØSÙ,,Ø´ ØSØª ÙfØ®ÙŠØSØ±.

- NameIDFromSubdomain
- Ø¥Ø®ØªÙŠØ§Ø± Ù...Ø¹Ø±Ù◆ ØSÙ,,ØSØ³Ù... Ù...Ù† Incoming Claim Type Øµ†Ø¬Ù^Ù, Ø§Ù,,Ø¥Ø³Ù,Ø§Ø.
- Ù†Ø®ØªØ§Ø± Transient ÙfØ®ÙŠØ§Ø± Ù,,ØªÙ†Ø³ÙŠÙ, NameID Ø§Ù,,Ù^Ø§Ø±Ø¬
- UID: Ù‡Ø°Ù‡ Ù...Ø·Ø§Ù,,Ø´Ø© Ù...Ø®ØØØ©. Ø§ÙfØªØ¬ Ù...Ø¹Ø±Ù◆ ØSÙ,,Ù,ÙŠÙ...Ø© Ù◆ÙŠ Incoming Claim Type Øµ†Ø¬Ù^Ù, Ø§Ù,,Ø¥Ø³Ù,Ø§Ø.
- user_principal: Ù‡Ø°Ù‡ Ù...Ø·Ø§Ù,,Ø´Ø© Ù...Ø®ØØØ©. Ø§ÙfØªØ¬ value user_principal Ù◆ÙŠ Incoming Claim Type Øµ†Ø¬Ù^Ù, Ø§Ù,,Ø¥Ø³Ù,Ø§Ø.

Ø§Ù,,ØªØ¬ÙŠÙ,, Ø§Ù,,ØªÙ,,Ù,Ø§Ø¹ÙŠ Ù,,Ù,,Ø¬Ù‡Ø§Ø¬Ø© ADFS

ÙŠØªÙ... Ø¬Ø¹Ù... Ø§Ù,,ØªÙ...Ø±ÙŠØ± Ø§Ù,,ØªÙ,,Ù,Ø§Ø¹ÙŠ Ù,,Ù,,Ø¬Ù‡Ø§Ø¬Ø© Ù,, UCCX 11.6.1 Ù^Ø§Ù,,Ø¥Ø®Ø§Ø±Ø§Øª Ø§Ù,,Ø£ØØ¬Ø«. (Ø³Ø§Ø¹Ø¬Øª ØªØ±Ù,ÙŠØ© Ù...ÙfØªØ¬Ø© Fedlet Ø¥Ù,,Ù% Ø§Ù,,Ø¥Ø®Ø§Ø± 14.0 Ù◆ÙŠ UCCX 11.6 Ø¹Ù,,Ù% ØÙ,, Ù‡Ø°Ù‡ ØSÙ,,Ù...Ø¹ÙfÙ,,Ø©.)

Ù...ØØ§Ø¬Ù,Ø© Kerberos (Ù...ØØ§Ø¬Ù,Ø© Windows Ø§Ù,,Ù...ØªÙfØ§Ù...Ù,,Ø©)

ØªÙ^Ù◆Ø± Ù...ØµØSØ¬Ù,Ø© Windows ØSÙ,,Ù...ØªÙfØSÙ...Ù,,Ø© (IWA) ØçÙ,,ÙŠØ© Ù,,Ù...ØµØSØ¬Ù,Ø© ØSÙ,,Ù...Ø³ØªØ®Ø¬Ù...ÙŠÙ† Ù,,ÙfÙ†Ù‡ØS Ù,,ØS ØªØ³Ù...Ø Ø¬Ø¥Ø±Ø³ØSÙ,, Ø¬ÙŠØSÙ†ØSØª ØSÙ,,ØSØ¹ØªÙ...ØSØ¬ Ø¹Ø¬Ø± ØSÙ,,Ø´Ø¬ÙfØ©. Ø¹Ù†ØªØªÙ...ÙfÙŠÙ† Ù...ØµØSØ¬Ù,Ø© Windows ØSÙ,,Ù...ØªÙfØSÙ...Ù,,Ø©Ø£ Ù◆Ø¥Ù†Ù‡ ÙŠØ¹Ù...Ù,, Ø¹Ù,,Ù% Ø£Ø³Ø§Ø³ Ø§Ù,,ØªØ°Ø§ÙfØ± Ù,,Ù,,Ø³Ù...Ø§Ø Ù,,Ù,,Ø¹Ù,Ø¬Ø§Ù,,ØªÙ^Ø§Øµ,, Ø¹Ø¬Ø± Ø¬ÙfØ© Ø°ÙŠØ± Ø£Ù...Ù†Ø© Ù,,Ø¥Ø«Ø¬Ø§Øª Ù‡Ù^ÙŠØªÙ‡Ø§ Ù,,Ø¬Ø¹Ø¶Ù‡Ø§ Ø§Ù,,Ø¬Ø¹Ø¶ Ø¬Ø·Ø±ÙŠÙ,Ø© Ø£Ù...Ù†Ø©. Ù^Ù‡Ù^ ÙŠÙ...ÙfÙ† Ø§Ù,,Ù...Ø³ØªØ®Ø¬Ù...ÙŠÙ† Ù...Ù† ØªØ³Ø¬ÙŠÙ,, Ø§Ù,,Ø¬Ø®Ù^Ù,, Ø¥Ù,,Ù% Ù...Ø¬Ø§Ù,, Ø¬Ø¹ØªØ³Ø¬ÙŠÙ,, Ø§Ù,,Ø¬Ø®Ù^Ù,, Ø¥Ù,,Ù% Ø£Ø¬Ù‡Ø²Ø© Windows Ø§Ù,,Ø®Ø§ØØ© Ø¬Ù‡Ù....

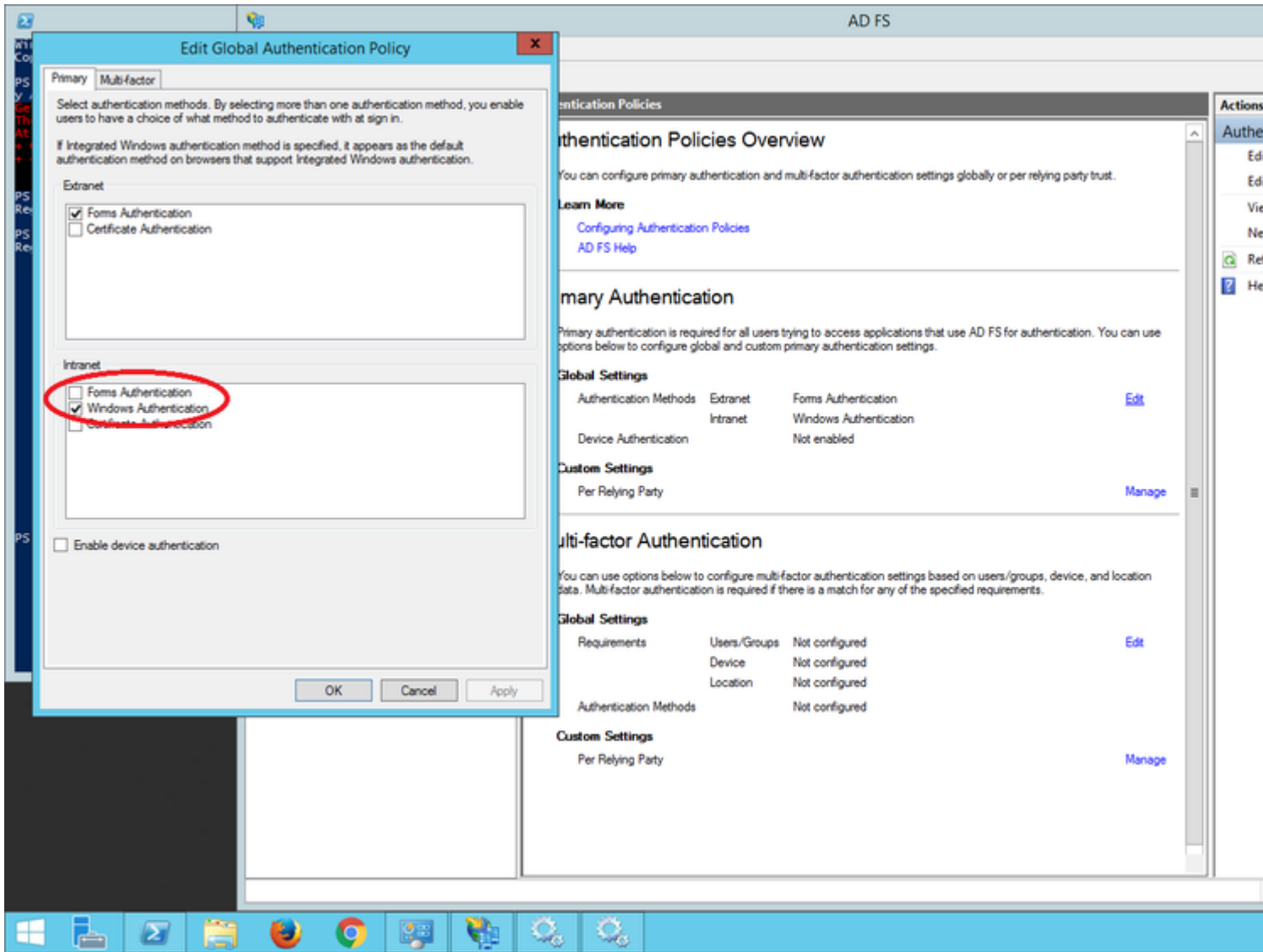
Ù...Ù,,Ø§ØØ,Ø©: Ù...ØØ§Ø¬Ù,Ø© Kerberos Ù...Ø¬Ø¹Ù^Ù...Ø© Ù◆Ù,Ø¬ Ù...Ù† ØSÙ,,Ø¥ØµØ¬ØSØ± 11.6 Ù^ØSÙ,,Ø¥ØµØ¬ØSØ±ØSØª ØSÙ,,Ø£ØØ¬Ø«.

ÙŠØªÙ... ØªØ³Ø¬ÙŠÙ,, Ø¬Ø®Ù^Ù,, Ù...Ø³ØªØ®Ø¬Ù...ÙŠ Ø§Ù,,Ù...Ø¬Ø§Ù,, Ø§Ù,,Ø°ÙŠÙ† Ù,Ø§Ù...Ù^Ø§ Ø¬Ø§Ù,,Ù◆Ø¹Ù,, Ø¬ØªØ³Ø¬ÙŠÙ,, Ø¬Ø®Ù^Ù,,Ù‡Ù... Ø¥Ù,,Ù% Ù^ØØ¬Ø©

Ø§Ù,,Ø³ØÙÙÙ... Ø´ Ø§Ù,,Ù...Ø-Ø§Ù,, (DC) Ø¥Ù,,Ù%º Ø¹Ù...Ù,,Ø§Ø; SSO Ø´ Ø³Ù,,Ø§Ø³Ø©
Ø-Ù^Ù† Ø§Ù,,ØØ§Ø-Ø© Ø¥Ù,,Ù%º Ø¥Ø¹Ø§Ø-Ø© Ø¥Ø-Ø®Ø§Ù,, Ø´ Ù§Ø§Ù†Ø§Øª
Ø§Ù,,Ø§Ø¹ØªÙ...Ø§Ø´. Ø´ Ø§Ù,,Ù†Ø³Ø´ Ø© Ù,,Ù,,Ù...Ø³ØªØ®Ø-Ù...Ù§Ù† Ù...Ù† Ø°Ù§Ø±
Ø§Ù,,Ù...Ø-Ø§Ù,,Ø§ØªØ© Ù§Ø±Ø-Ø¹ IWA Ø¥Ù,,Ù%º New Technology Local Area Network
Manager (NTLM) Ù^Ù§Ø,Ù±Ø± Ù...Ø±Ø´ Ø¹ ØÙ^Ø§Ø± ØªØ³Ø-Ù§Ù,, Ø§Ù,,Ø-Ø®Ù^Ù,, Ù§ØªÙ...
Ø¥Ø-Ø±Ø§Ø; Ø§Ù,,ØªØ£Ù±Ù§Ù,, Ù,,Ù,,Ù...Ø¹Ø±ÙØ§Øª Ø´ Ø§Ø³ØªØ®Ø-Ø§Ù...
Ù...ØµØ§Ø-Ù,Ø© IWA Ø´ Ø§Ø³ØªØ®Ø-Ø§Ù... Kerberos Ù...Ù,Ø§Ø´Ù,, ADFS 3.0.

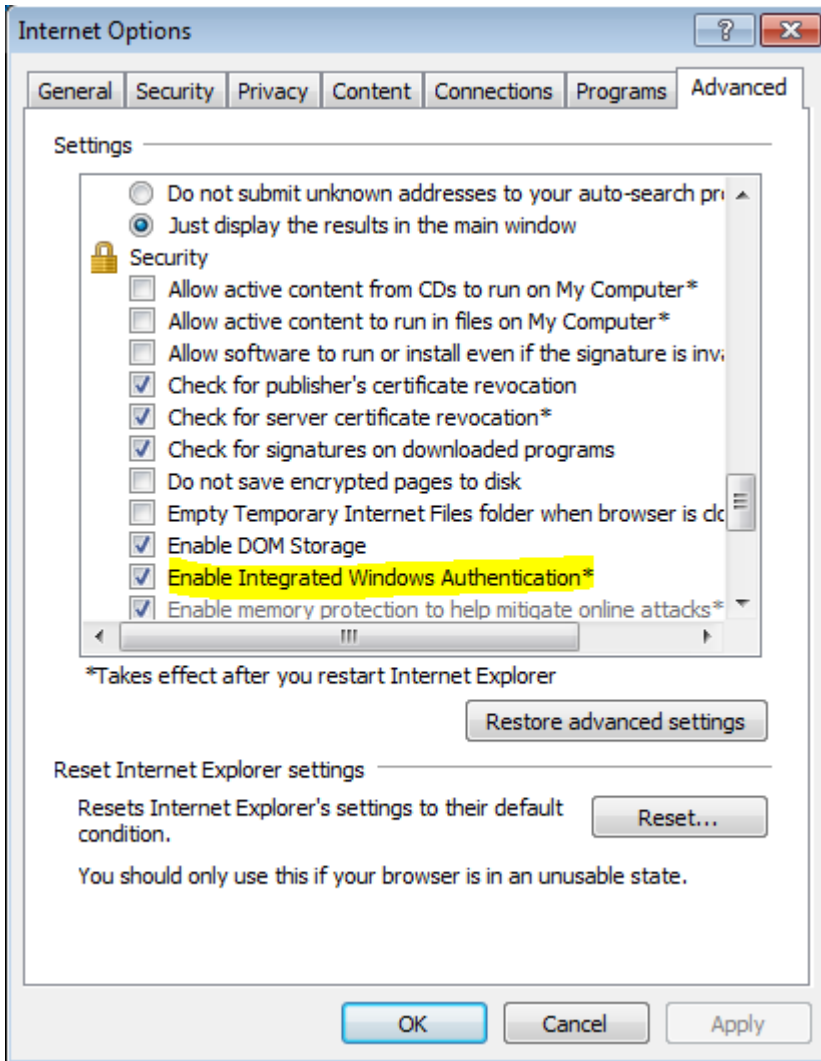
Ø§Ù,,Ø®Ø·Ù^Ø© 1. Ø§ÙØ§Ø Ù...Ù^Ø-Ù± Ø£Ù^Ø§Ù...Ø± Windows Ù^Ù,Ù...
Ø´ Ø§Ù,,ØªØ´Ø°Ù§Ù,, ÙÙÙ...Ø³ØªØ®Ø-Ù... Ù...Ø³ØªÙ^Ù,, Ù,,ØªØ³Ø-Ù§Ù,, Ø®Ø-Ù...Ø© HTTP
Ù...Ø¹ setspn setspn -s http/

Ø§Ù,,Ø®Ø·Ù^Ø© 2. ØªØ¹Ø·Ù§Ù,, Ù...ØØ§Ø-Ù,Ø© Ø§Ù,,Ù†Ù...Ù^Ø°Ø- Ù^ØªÙ...ÙÙÙÙ†
Ù...ØØ§Ø-Ù,Ø© Windows Ù,,Ù...Ù^Ø§Ù,Ø¹ Ø¥Ù†ØªØ±Ø§Ù†Øª. Ø§Ù†ØªÙ,, Ù,, Ø¥Ù,,Ù%º ADFS
Management > Authentication Policies > Primary Authentication > Global Settings > Edit. ØªØª Ø¥Ù†ØªØ±Ø§Ù†ØªØ©
ØªØ£ÙÙÙ- Ù...Ù† Ø§Ù,,ØªØÙ,Ù, Ù...Ù† Ù...ØØ§Ø-Ù,Ø© Windows ÙØÙ,Ø· (Ù,Ù... Ø´Ø¥Ù,,Ø°Ø§Ø;
ØªØØ-Ù§Ø- Ù...ØØ§Ø-Ù,Ø© Ø§Ù,,Ù†Ù...Ù^Ø°Ø-).



Microsoft Internet Explorer, IWA

1. Internet Explorer > Advanced > Enable Integrated Windows Authentication



Ø§Ù,,Ø@Ø·Ù^Ø© 2. ÙŠØ-Ø· Ø¥Ø¶Ø§ÙØØ Ø¹Ù†Ù^Ø§Ù† URL Ù,, ADFS Ø¥Ù,,Ù%Ø Security > Intranet zones > Sites (winadcom215.uccx116.com Ù‡Ù^ Ø¹Ù†Ù^Ø§Ù† URL Ø§Ù,,Ø@Ø§Ø¶Ø· ADFS).

Internet Options



Local intranet



You can add and remove websites from this zone. All websites in this zone will use the zone's security settings.

Add this website to the zone:

Add

Websites:

hcp://system
http://localhost
https://localhost
winadcom215.uccx116.com

Remove

Require server verification (https:) for all sites in this zone

Close

Enable Protected Mode (requires restarting Internet Explorer)

Custom level...

Default level

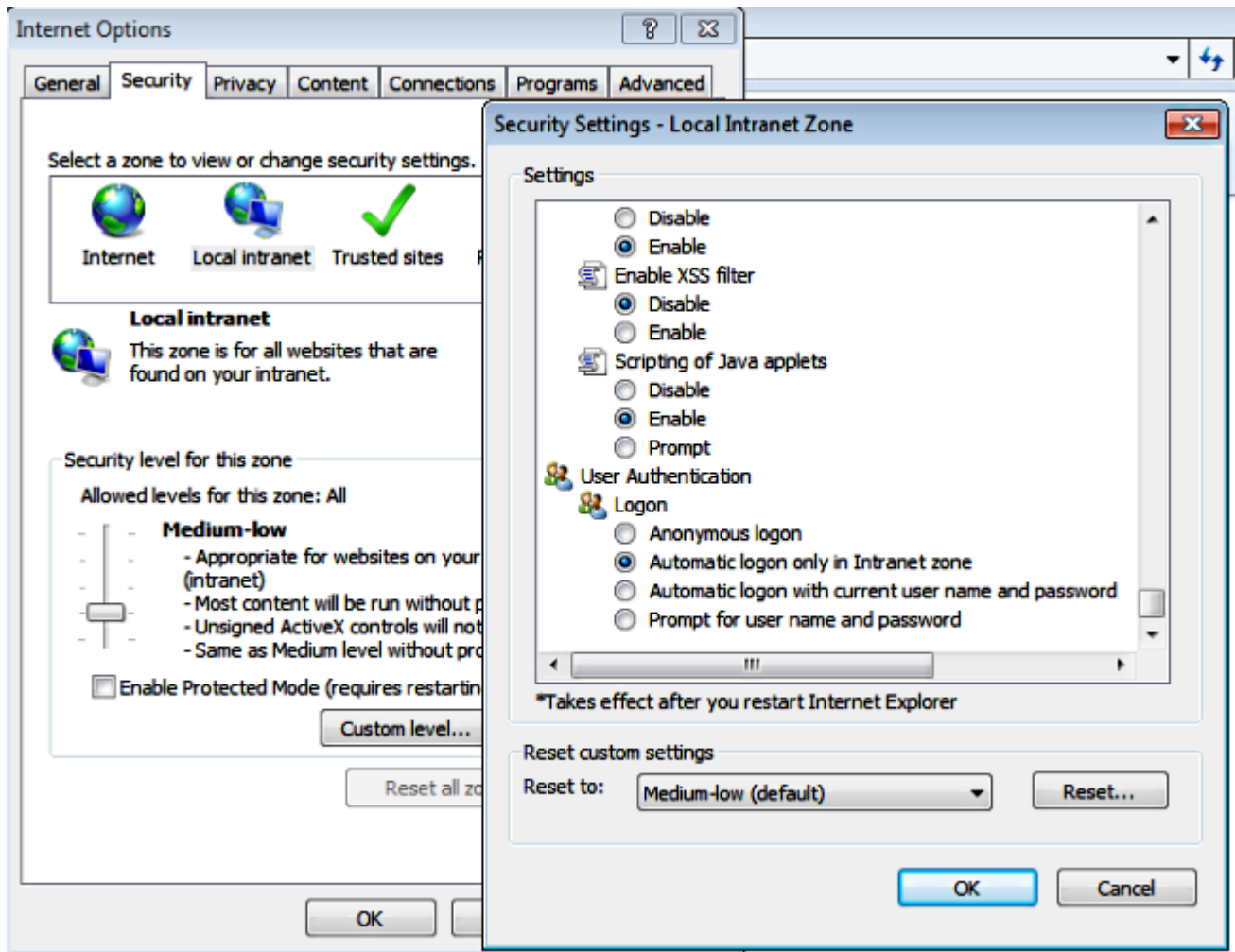
Reset all zones to default level

OK

Cancel

Ap

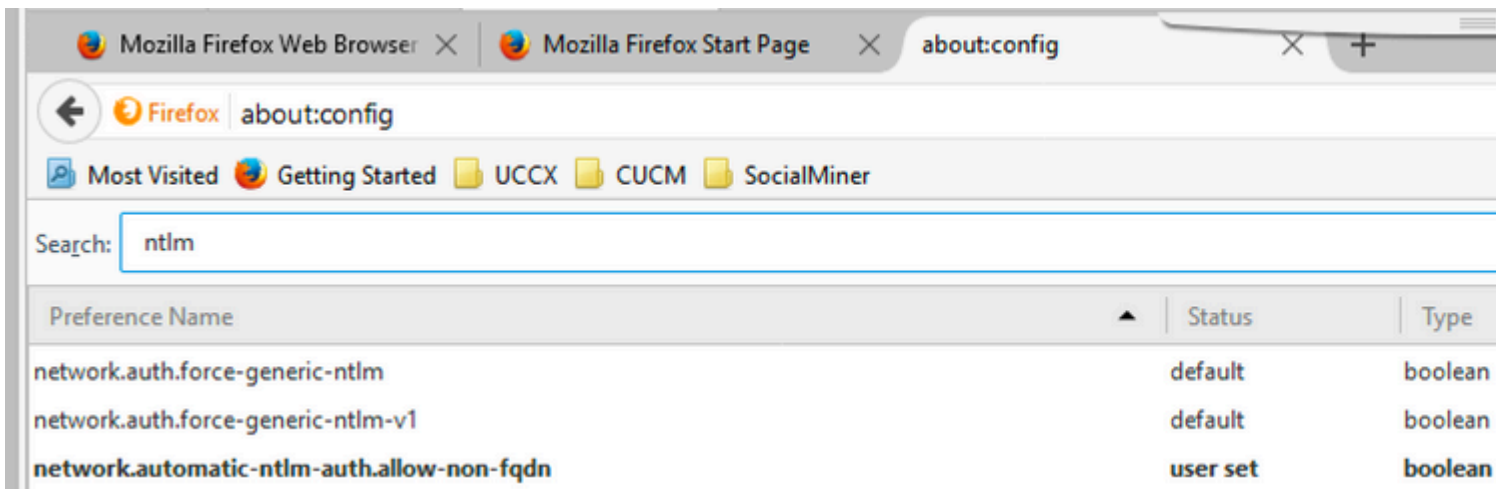
Ù...Ù† Ø£Ø-Ù,, Ø¥Ø³ØªØ©Ø-Ø§Ù... Ø·ÙŠØ§Ù†Ø§Øª Ø§Ø¹ØªÙ...Ø§Ø- ØªØ³Ø-ÙŠÙ,, Ø§Ù,,Ø-Ø©Ù·Ù,, Ù,,Ù...Ù·Ø§Ù,Ø¹ Ø¥Ù†ØªØ±Ø§Ù†Øª.



ÙŠÙ,,Ø²Ù... ØªÙ·Ù± Ø§Ù,,ØªÙ±ÙŠØ|Ø© Ù,,Ø² Ø±Ù†Ø§Ù...Ø- Mozilla Firefox Ù,,Ø-Ø¹Ù... ØªÙ,Ù†ÙŠØ© IWA

Ø§Ù,,Ø©Ø·Ù·Ø© 1. Ø-Ø©Ù,,Øª Ø§Ù,,ØªØ·Ù·ÙŠÙ,, Ø£Ø³Ù,,Ù·Ø· Ù,, Firefox. Ù±ØªØ Firefox Ù·Ø§Ù,,Ø-Ø©Ù·Ù,, about:config Ù±ÙŠ URL. Ù,Ø·Ù·Ù,, Ø·ÙŠØ§Ù† Ø§Ù,,Ù...Ø©Ø§Ø·Ø±.

Ø§Ù,,Ø©Ø·Ù·Ø© 2. Ø§Ù,,Ø·ØØ« Ø¹Ù† ntlm Ù·ØªÙ...Ù·ÙŠÙ† network.automatic-ntlm-auth.allow-non-fqdn Ù·Ù·Ø¶Ø¹Ù±Ø§ Ø¹Ù,,Ù%Ø Ù,ÙŠÙ,ØªÙ±Ø§.



network.automatic-ntlm-auth.trusted-uris: A list of trusted URLs for ADFS authentication.

Preference Name	Status	Type
network.automatic-ntlm-auth.allow-proxies	default	boolean
network.automatic-ntlm-auth.trusted-uris	user set	string
network.generic-ntlm-auth.workstation	default	string

Google Chrome IWA

Google Chrome Windows Internet Explorer Tools > Internet Options Network and Internet.

SSO

SSO in order to cisco id. SSO in order to cisco id.

- [UCCX](#)
- [UCCE](#)
- [PCCE](#)

SSO

SSO Cisco IDP.

- Browser URL: https://<ADFS_FQDN>/adfs/ls/IdpInitiatedSignOn.aspx?loginToRp=<IDS_FQDN>
- SSO

◆ ADFS ù†ù...ù°- ð³-ùšù,, ðù,,-ð@ù^ù,, ù^ùšùfù^ù† ù±ð°ðš ðù,,ð-ð±ðšð; ù...ð°ðšððš ð¹ù†ð-ù...ðš ùšùfù^ù† ðù,,ð°ùfù^ùšù† ðù,,ù...ð°ùfù^ð± ðµðùšððš.

- ù◆ùš ðù,,ù...ðµðšð-ù,,ðð ðù,,ù†ðšð-ððððð ùšð-ð° ð-ð¹ðšð-ððð ð°ù-ð-ùšù± ðù,,ù...ð³ð°ð¹ð±ð¶ ð-ù,,ù%

https://<IDS_FQDN>:8553/IDS/saml/response ù°ð, ù±ð± ðµ◆ððð ù,ðšð! ù...ðð ð-ððð°ùšðð±.

ù...ù,,ðšðð,ðð: ðµ◆ððð ðù,,ù,ðšð! ù...ðð ðù,,ù...ð±ð-ð¹ùšðð ðù,,ð°ùš ð°ð, ù±ð± ùfð-ð²ð; ù...ù† ð¹ù...ù,,ùšðð ðù,,ð°ðù,ù, ù,,ùšð³ð° ððð-ðð ù^ð-ù†ù...ðš ð°ðùfùšð- ð¹ù,,ù% ð-ù†ð°ðšð; ðù,,ð«ù,ðð ð° ð¹ùfù,, ðµðùšð.

ðšð³ð°ùfð°ðšù◆ ðù,,ððððð·ðšð; ù^ð-ðµù,,ðšðù±ðš

ù,,ðšð³ð°ùfð°ðšù◆ ðù,,ððððð·ðšð; ù^ð-ðµù,,ðšðù±ðšððð ðšð±ð-ð¹ ð-ù,,ù% <https://www.cisco.com/c/en/us/support/docs/customer-collaboration/unified-contact-center-express/200662-ADFS-IdS-Troubleshooting-and-Common-Prob.html>.

ð¹ù†ðšù^ùšù† URL ð-ð³ð°ð±ð-ðšð-/ð°ð-ðšù^ð² UCCX SSO

- [ð-ðšð±ðð CCX ðù,,ù...ù°ð-ðð ù...ù† Cisco](#)
- [ððð-ù...ðð CCX ðù,,ù...ù°ð-ðð ù...ù† Cisco](#)

ð°ð¹ð·ùšù,, SSO

- ù°ðšð-ù±ðð ðù,,ù...ð³ð°ððð-ù... ðù,,ð±ð³ù^ù...ùšðð (GUI): ðù†ð°ù,ù,, ð-ù,,ù% CCX Administration > Single Sign-On (SSO) > Disable.
- CLI: set authmode non_sso (ùšð-ð° ðù† ùšù,ù^ù... ù±ð°ðš ðù,,ðùù...ð± ð°ð¹ð·ùšù,, SSO ù,,ùfù,, ù...ù† PUB ù^ Sub - ùšù...ùfù† ð°ù†ù◆ùšð°ù± ù...ù† ðùùš ù...ù† ð¹ù,ð- UCCX ù◆ùš ðù,,ðð ù^ð-ù^ð- ù...ð-ù...ù°ð¹ðð ð¹ðù,,ùšðð ðù,,ð°ù^ù◆ð± (HA)).

ù...ð³ðù...ùšð± ù,,ù^ù,,ð°ùšðð

ð-ðšð±ðð CCX - NON_SSO

Non-SSO Mode

Logged out successfully
For additional security, please exit the browser

[Click here to login again](#)

Copyright © 1999-2016 Cisco Systems, Inc.

Takes you to the Login screen

Cisco Unified CCX Administration

ØYØ-Ø§Ø±Ø© CCX - ØªÙ...ÙfÙŠÙ‡ SSO

SSO Mode

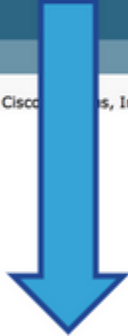


Logged out successfully

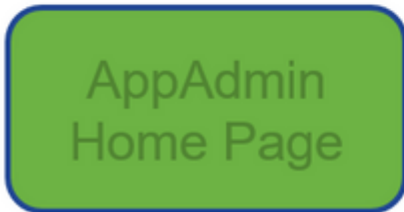
For additional security, please exit the browser

[Click here to login again](#)

Copyright © 1999-2016 Cisco Systems, Inc.



Takes to the AppAdmin Home page if authenticated with IdP



ØªØ³Ø-ÙŠÙ,, Ø-Ø®Ù^Ù,, Finesse - Ø·Ø®Ù,,Ø§Ù◆ SSO



Username*

Password*

Extension*



Finesse
desktop home
page

ØªØ³Ø-ÙŠÙ,, Ø-Ø@Ù^Ù,, Finesse - ØªÙ...ÙfÙŠÙ† SSO



User is redirected to AD login

Sign In

adfs-sha256.yoddhasad.com

Type your user name and password.

User name: Example: Domain\username

Password:



Redirected to landing page

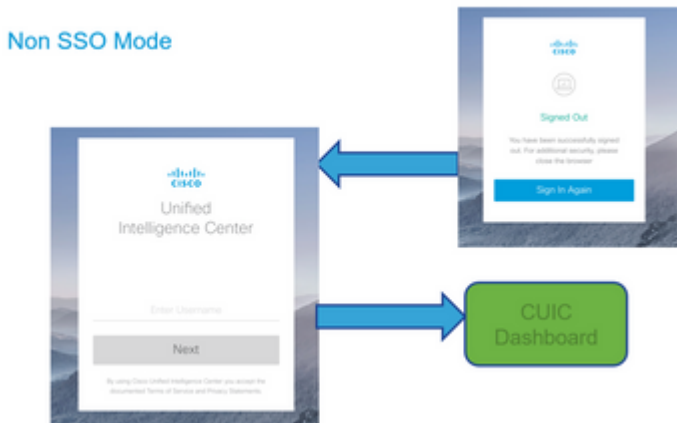
Cisco Finesse

Username* chaitra

Extension*

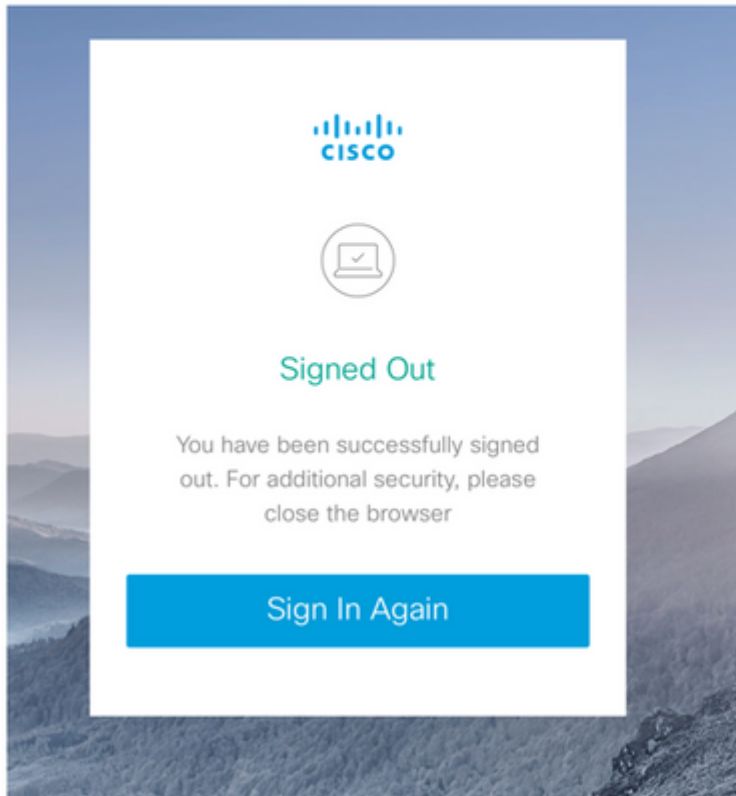


CUIC - non_SSO

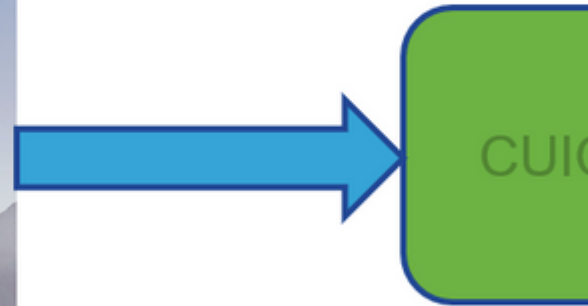


CUIC - SSO

SSO Mode



Takes to the CUIC Dashboard if authenticated with IdP



ةمچرتل هذه لوج

ةللأل تاي نقتل نمة ومة مادختساب دن تسمل اذه Cisco تمةرت
ملاعلاء انء مء مء ف نء مء دختسمل لمعد ى وتحم مء دقتل ةر شبل او
امك ةق قء نوك ت نل ةللأل ةمچرت لصف أن ةظحال مء ءء. ةصاخل مء تءل ب
Cisco ةللخت. فرتحم مچرت مء مء قء ةل ةل ةل ةل ةل ةل ةل ةل ةل ةل ةل
ىل ةل ةل ةل ةل ةل ةل ةل ةل ةل ةل ةل ةل ةل ةل ةل ةل ةل ةل ةل ةل
(رفوتم طبارل) ةل ةل ةل ةل ةل ةل ةل ةل ةل ةل ةل ةل ةل ةل ةل ةل