



Pluggable Transceiver (SFP) Configuration Guide for SIMATIC STEP7/TIA Portal

[Adding SFP Modules to the Hardware Configuration in SIMATIC STEP7/TIA Portal](#) 2

Revised: September 28, 2018

Adding SFP Modules to the Hardware Configuration in SIMATIC STEP7/TIA Portal

This document describes how to add Small Form-Factor Pluggable (SFP) modules to the SIMATIC STEP7 or TIA Portal automation applications to enable these applications to recognize the SFP modules in the PROFINET environment.

In Cisco IOS releases prior to 15.2(5)E2, only the following SFPs for IE 2000, IE 3000, IE 4000, IE 4010, and IE 5000 series switches worked in STEP 7 or TIA (without General Station Description (GSD) support):

- GLC-FE-100FX=
- GLC-LH-SMD=
- GLC-LH-SM=

The following SFPs for IE 2000, IE 4000, and IE 5000 series switches can be added to STEP 7 or TIA. In addition, the Combo port works in both copper and fiber mode.

- GLC-TE
- GLC-T
- GLC-FE-T-I
- GLC-FE-100FX-RGD
- GLC-FE-100LX-RGD
- GLC-SX-MM-RGD
- GLC-LX-SM-RGD
- GLC-FE-100FX
- GLC-SX-MMD
- GLC-LH-SMD
- GLC-SX-MM
- GLC-LH-SM
- GLC-T-RGD

STEP7/TIA Procedure

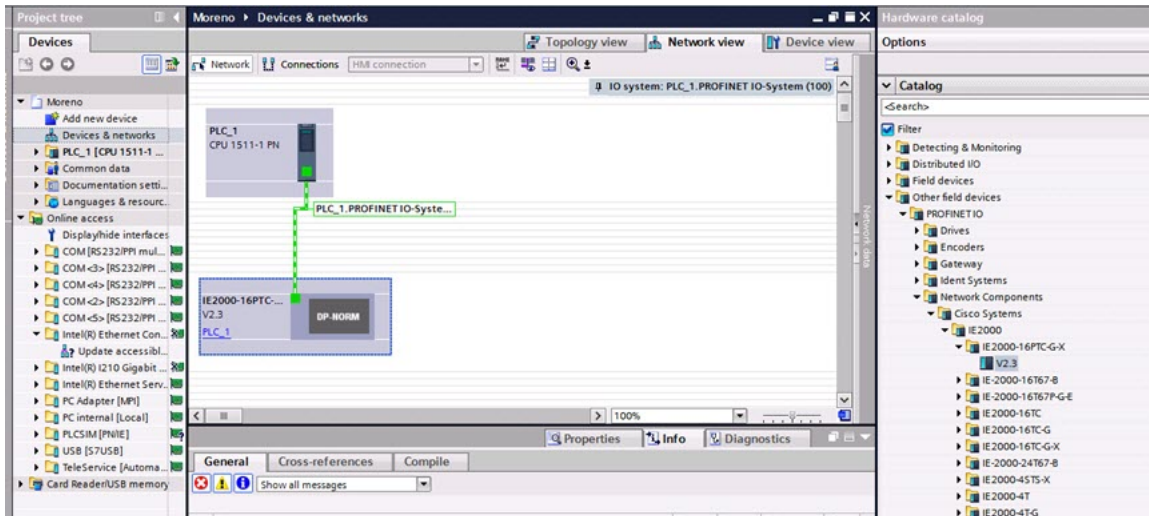
Follow this procedure to add SFPs to the hardware configuration in STEP7 or TIA.

Before you begin

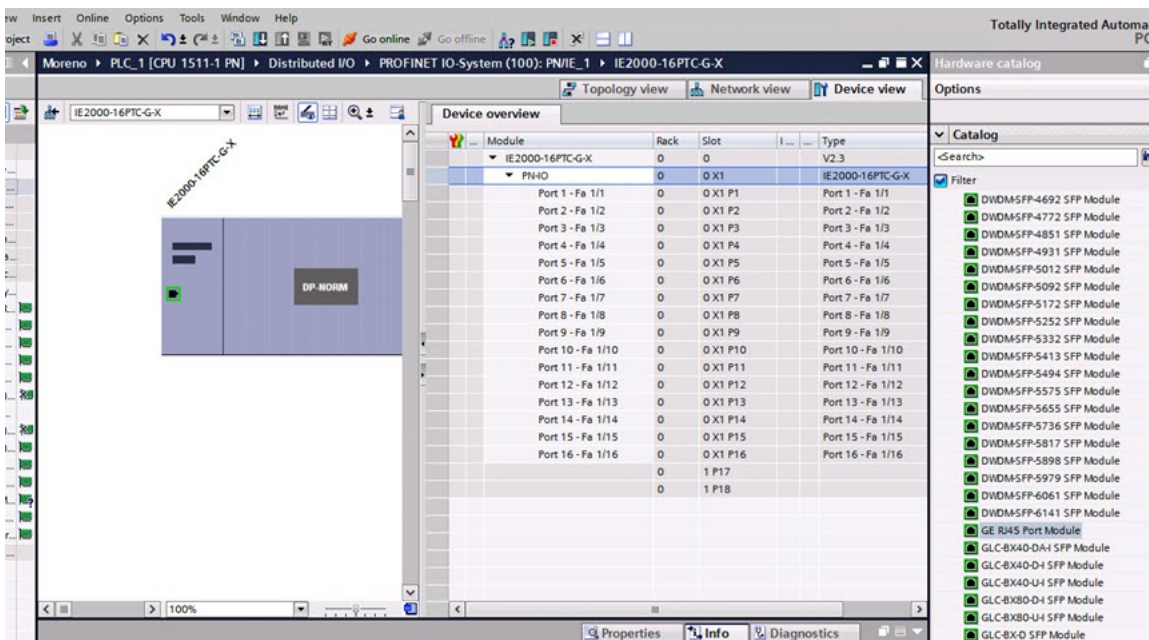
Install the latest General Station Description (GSD) file for your IE switches in STEP7 or TIA. The GSD file is not backward compatible. Combo ports do not have defaults and must be re-created in STEP7 or TIA with the new GSD file.

Procedure

- Step 1** In STEP7 or TIA, open the project containing the Cisco IE switch, and double-click **Devices & networks** in the project tree.
- Step 2** From the Hardware catalog in the hardware and network editor, select the Device Access Point (DAP) name for your switch.



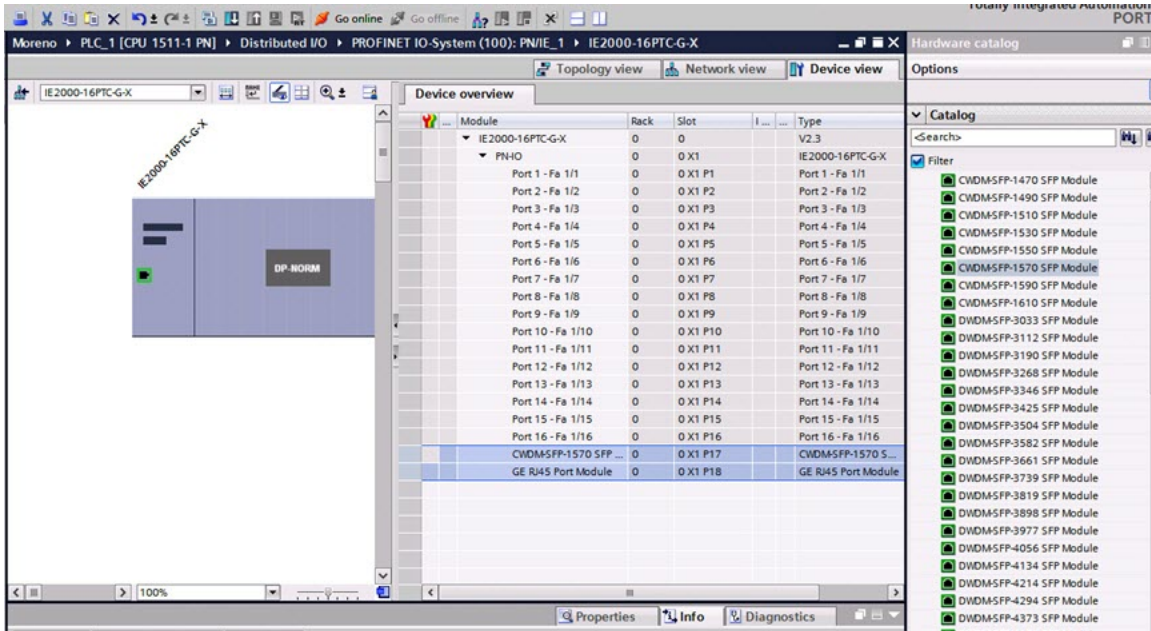
- Step 3** Double click the DAP name to go to Device view tab. Expand the PN-IO row in Device overview section if the port list is not displayed.



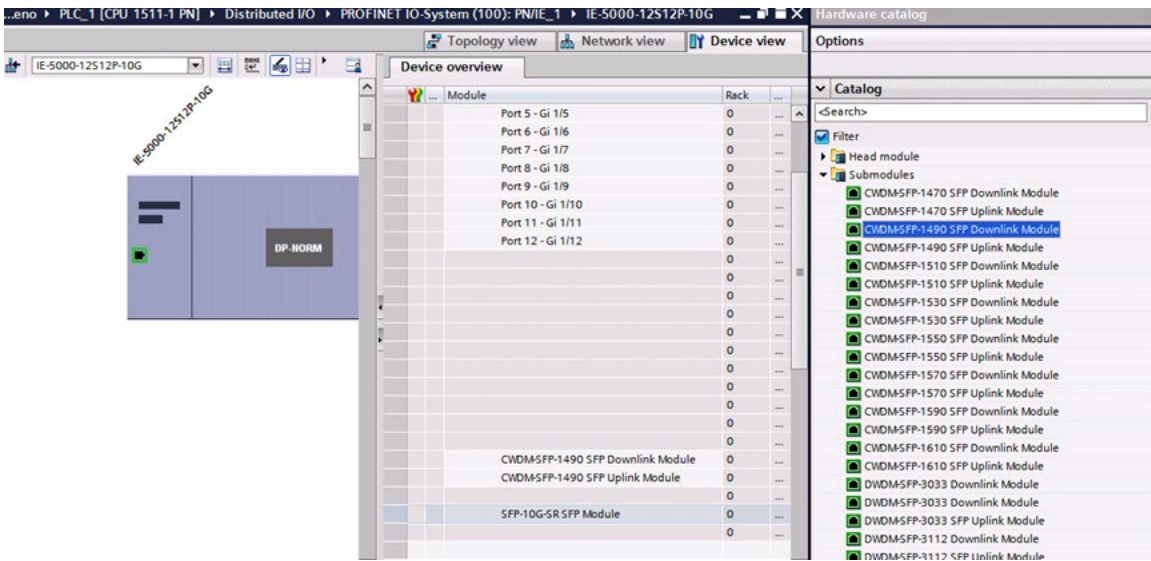
- Step 4** Select the modules that you have installed in the switch from the Hardware catalog and drag them to the appropriate rows in the table area of Device view:

- GE RJ45 port module for GI port (combo port)
- FE RJ45 port module for FE port (combo port)
- Appropriate SFP module for port type (combo port or fiber-only port)

As shown in the following figure, the CWDM-SFP-1570 SFP is dragged to Port 17 and the GE RJ45 port module is dragged to Port 18 in the table. The device in TIA is now ready to compile and download.



The following figure shows the Device view and Hardware catalog with SFP modules for the IE 5000. There is an uplink and downlink module for each FE or Gi SFP. Downlink SFP modules are for ports Gi1/12-Gi1/24 and uplink SFP modules are for ports Gi1/25-Gi1/28.



Feature History

Platform	Feature	First Supported Release
IE 2000, IE 4000, IE 5000	GLC-T-RGD added to list of supported SFPs.	Cisco IOS Release 15.2(6)E2a
IE 4000	Configure combo ports as copper or SFP in STEP7/TIA	Cisco IOS Release 15.2(6)E2a
IE 2000, IE 5000	Configure combo ports as copper or SFP in STEP7/TIA	Cisco IOS Release 15.2(5)E2

Cisco and the Cisco logo are trademarks or registered trademarks of Cisco and/or its affiliates in the U.S. and other countries. To view a list of Cisco trademarks, go to this URL: [www.cisco.com go trademarks](http://www.cisco.com/go/trademarks). Third-party trademarks mentioned are the property of their respective owners. The use of the word partner does not imply a partnership relationship between Cisco and any other company. (1721R)

Any Internet Protocol (IP) addresses and phone numbers used in this document are not intended to be actual addresses and phone numbers. Any examples, command display output, network topology diagrams, and other figures included in the document are shown for illustrative purposes only. Any use of actual IP addresses or phone numbers in illustrative content is unintentional and coincidental.

© 2017–2018 Cisco Systems, Inc. All rights reserved.



Americas Headquarters
Cisco Systems, Inc.
San Jose, CA 95134-1706
USA

Asia Pacific Headquarters
CiscoSystems(USA)Pte.Ltd.
Singapore

Europe Headquarters
CiscoSystemsInternationalBV
Amsterdam,TheNetherlands

Cisco has more than 200 offices worldwide. Addresses, phone numbers, and fax numbers are listed on the Cisco Website at www.cisco.com/go/offices.