

Readme for Cisco Prime Network 3.8.xTo3.9.x Device Package 1305

Date: June 25th, 2013

Table of Contents

1	Contents of Prime Network 3.8.xTo3.9.x Device Package 1305	2
1.1	Naming Convention of the Device package tar file.....	3
1.2	New Software/Feature for Cisco Network Elements.....	3
1.3	New Reduced Polling (EVNE) Support	4
1.4	New Support for Cisco Prime Network Configuration and Image Management	4
2	Installing Prime Network 3.8.xTo3.9.x-Device Package 1305.....	4
3	List of Latest Driver Files on Cisco Prime Network 3.8.x/3.9 server post installation of PrimeNetwork-3.8.xTo3.9.x-DP1305.tar.....	5
4	Resolved Defects.....	6
4.1	Defect Resolutions That Require Cisco Prime Network Patches	16
5	Open Defects.....	17
5.1	Device-Specific Open Defects	17
5.2	Cisco Prime Network-Specific Open Defects	17
6	Related Documentation.....	17
7	Appendix A.....	19
	Devices Supported in Cisco-Others-v3.3.1.0.jar Supported Device.....	19
8	Appendix B.....	19
	Specifying IP Addresses for which SNMP Trap and Syslog Events	19
9	Appendix C.....	20
	Configuration Task for ASR 5000/5500 VNE Modeling.....	20
10	Appendix D.....	21
	Configuration Task for UCS VNE Modeling	21
11	Appendix E	22

	Configuration Task for ASR 901 for seeing the Soft Property.....	22
12	Appendix F	22
	Configuration Task for 7600 for Modeling only iBGP Routes	22
13	Appendix G.....	22
	Configuration Task for ASR 9000 for Modeling only iBGP Routes.....	22

1 Contents of Prime Network 3.8.xTo3.9.x Device Package 1305

Prime Network 3.8.xTo3.9.x Device Package (DP) 1305 provides new and enhanced device support and defect fixes for Cisco VNEs. This document lists the cumulative support delivered post Cisco Prime Network 3.8.0.

This Device package can be installed on any Cisco Prime Network 3.8.0.0.5 or later or Cisco Prime Network 3.8.0.1.0, Cisco Prime Network 3.8.1.0.2 or Cisco Prime Network 3.9 or Cisco Prime Network 3.9.0.0.1 or Cisco Prime Network 3.9.0.1.1 or later only.

The new support and defect fixes are described in this Readme.

Note:

- At any point in time, to get the most up-to-date device support, install the most recent DP that is available from Cisco.com. To verify whether you have latest VNE driver files, refer to Section 3.
- Table below represents the feature support delivered in Device Package 3.8.xTo3.9.x DP1305

	On Prime Network 3.8.0.0.5, 3.8.1.0.2 for Later	On Prime Network 3.9 or Later
Nexus 7000 and Nexus 2000	Modeled as Multi Shelf	Modeled as Multi Chassis
Nexus 5000 and Nexus 2000	Modeled as Multi Shelf	Modeled as Multi Chassis
ASR 9000 : Satellite and Cluster	Not Supported	Supported
ASR 5000 : GGSN APN GTPU	Not Supported	Supported
CRS : Multi chassis	Modeled as Multi Shelf	Modeled as Multi Chassis

- Please refer to [Appendix F](#) for modeling iBGP only in Cisco 7600
- Please refer to [Appendix G](#) for modeling iBGP only in ASR 9000
- It is recommended to restart the Prime Network after installing May DP 1305 for fixing issue CSCue90516 [Please refer to CSCue90516 in [section 4](#) of the Readme]

You can use the “**networkctl restart**” command to restart the Prime Network Server

- For fixing the issue CSCud97831 it requires corresponding dependent Cisco Prime Network Fixes.[Please refer CSCud97831 in [section 4.1](#) of the readme]
 - If it is Cisco Prime Network 3.8 or Cisco Prime Network 3.8.1.x fix will be given by **Hot Fix**

- If it is Cisco Prime Network 3.9.x fix can be given by **Hot Fix** or preferably via Prime Network 3.9.0.1.3 (planned to be released by mid June 2013) or later.

Note: To obtain the hotfix, please contact your Cisco representative

1.1 Naming Convention of the Device package tar file

The Cisco VNE Device packages supported on Cisco Prime Network 3.8.0.0.5 would have the following naming convention going forward from June 2012.

PrimeNetwork-3.8.xTo3.9.x-DPymm.tar

For example – PrimeNetwork-3.8.xTo3.9.x-DP1206.tar

PrimeNetwork – indicates the product on which the Device package is supported

3.8.xTo3.9.x – Indicates the device package is supported on Prime Network releases , for example , Prime Network 3.8 , 3.8.1 and 3.9

Dpyymm – Indicate year and month in which the package is released.

PrimeNetwork-3.8.xTo3.9.x-DP1210.tar – indicates the device package is released in October 2012 and is supported on Prime Network 3.8, 3.8.1 and 3.9

1.2 New Software/Feature for Cisco Network Elements

Note that jar files are cumulative. A jar that is revised for a newer DP contains all of the support that was contained in the previous version of the jar. (For example, PrimeNetwork-3.8.xTo3.9.x-DP1207.tar contains all of the support that was delivered from CiscoPrimeNetwork-3.8-DP1.tar)
The following table describes the new NE support provided in Cisco Prime Network 3.8.xTo3.9.x (PrimeNetwork-3.8.xTo3.9.x-DP1305.tar).

Device Series	Software	New NE / Power supply/ Modules supported	Feature/ Technologies	Name and Version of Jar File Containing the s/w Support
ASR 9000			Syslog <ul style="list-style-type: none"> • OS-DUMPER-5-CORE_FILE_NAME • OS-DUMPER-5-DUMP_FAILURE 	Cisco-ASR90xx-v3.8.1.0.jar
GSR IOS		New Module: <ul style="list-style-type: none"> • 12416E-SFC • 12416E-CSC 	Syslog* MBUS-6-OIR	Cisco-Modules-v3.5.2.0.jar Cisco-Commons-v3.6.3.0.jar

* Please refer the addendum document for exact syslog raw format

Consolidated list of devices, software, and modules supported post Prime Network 3.8 releases can be found here – [Cisco Prime Network Reference Guide – VNE Addendum, 3.8](#)

1.3 New Reduced Polling (EVNE) Support

This DP provides reduced polling (event-based polling) support for the following devices. After installing the DP, when you create a VNE for these device families using the Cisco Prime Network GUI client, you will be able to choose reduced polling for these VNEs. (For information on reduced polling, see the [Cisco Prime Network Administrator Guide, 3.8](#).)

Device Series	EVNE Support Added in	Jar File Name and Version
CRS 16 VE	Prime Network 3.8 DP 4	Cisco-Commons-v2.4.0.0.jar, Cisco-CRS-v2.2.2.0.jar
Nexus 1000v	Prime Network 3.8 DP2	Cisco-Nexus10xx-v2.2.0.0.jar
ASR 901	Prime Network 3.8 DP1	Cisco-MWR29xx-v2.1.0.0.jar
Nexus 70xx	Prime Network 3.8 DP1	Cisco-Nexus70xx-v2.1.0.0.jar
Nexus 3000	Prime Network 38.39 DP 1208	Cisco-Nexus30xx-v3.0.0.0.jar
Nexus 1000	Prime Network 38.39 DP 1209	Cisco-Nexus10xx-v3.3.3.0.jar

Note: Pl. refer to [Appendix B](#) for Reduced VNE Polling support for Nexus 7000

1.4 New Support for Cisco Prime Network Configuration and Image Management

This DP provides the following new support for Cisco Prime Network Configuration and Image Management. For defect fixes, see section 4.

Device Series	Software Release	Software Version	Functionality Supported	Device package jar file	Device Package release
Nexus 7000	NX OS	5.2(X)	All NCCM Feature	Cisco-Nexus70xx-v2.2.0.0.jar	Prime Network 3.8 DP2
Nexus 5000	NXOS	5.0(2)N2(1) 5.0(2)N1(1)	All NCCM Feature	Cisco-Nexus50xx-v2.2.0.0.jar	Prime Network 3.8 DP2

2 Installing Prime Network 3.8.xTo3.9.x-Device Package 1305

For instructions on how to install (or uninstall) the DP, see the appropriate DP installation guide for your Cisco PRIME NETWORK release. The guides are available from two places:

- Go to [Cisco Prime Network 3.8 Software Download site on Cisco.com](#) (click on hyperlink) and navigate to **Cisco Prime Network VNE Drivers section**. Choose the latest Device Package release available on Cisco.com

Please ensure to download the Device Package (DP) in **Binary Mode**.

Note: To obtain Cisco Prime Network 3.9 Software Download, contact your Cisco representative.

For a complete list of Cisco Prime Network 3.8 documentation, see:

- [Cisco Prime Network 3.8 Documentation](#)
- [Cisco Prime Network 3.9 Documentation](#)

Whenever a new device package is installed, VNE has to be restarted to ensure the VNE picks up the newly installed / pointed package, please see the (Section 8) restart information in Cisco Prime Network 3.9 VNE DP Installation Guide:

- [Cisco Prime Network 3.9 VNE DP Installation Guide](#)

It is recommended to restart the Prime Network after installing May DP 1305

You can use the “**anactl restart**” command to restart the Prime Network Server

3 List of Latest Driver Files on Cisco Prime Network 3.8.x/3.9 server post installation of PrimeNetwork-3.8.xTo3.9.x-DP1305.tar

The following list reflects the latest versions of VNE driver files for Cisco devices. This includes the drivers that were provided with the base release of Cisco Prime Network 3.8 (without any DPs installed). To check if the system has the latest driver files installed, log into the gateway server and compare the contents of your \$ PRIME_NETWORK_HOME/Main/drivers directory with the list below.

Note: This table only lists the latest Cisco VNE driver files. Your directory may also contain third-party VNE drivers if you have installed any third-party VNE DPs.

S. No	Device Series	Jar File name	DP version in which the jar file was changed
1	CPT	Cisco-CPT-v3.4.4.0.jar	PrimeNetwork-3.8.xTo3.9.x-DP1305
2	ASR 9000	Cisco-ASR90xx-v3.8.1.0.jar	PrimeNetwork-3.8.xTo3.9.x-DP1305
3	CRS	Cisco-CRS-v3.6.2.0.jar	PrimeNetwork-3.8.xTo3.9.x-DP1305
4	12000	Cisco-12xxx-v3.5.1.0.jar	PrimeNetwork-3.8.xTo3.9.x-DP1305
5	Cisco-Commons	Cisco-Commons-v3.6.3.0.jar	PrimeNetwork-3.8.xTo3.9.x-DP1305
6	Cisco-IOX-Commons	Cisco-IOX-Commons-v3.6.4.0.jar	PrimeNetwork-3.8.xTo3.9.x-DP1305
7	MWR 29xx	Cisco-MWR29xx-v3.5.4.0.jar	PrimeNetwork-3.8.xTo3.9.x-DP1305
8	ASR 903	Cisco-ASR903-v3.4.5.0.jar	PrimeNetwork-3.8.xTo3.9.x-DP1305
9	ASR 901	Cisco-MWR29xx-v3.5.4.0.jar	PrimeNetwork-3.8.xTo3.9.x-DP1305
10	Nexus 1000	Cisco-Nexus10xx-v3.6.4.0.jar	PrimeNetwork-3.8.xTo3.9.x-DP1305
11	Nexus 30xx	Cisco-Nexus30xx-v3.4.1.0.jar	PrimeNetwork-3.8.xTo3.9.x-DP1305
12	Nexus 50xx	Cisco-Nexus50xx-v3.6.3.0.jar	PrimeNetwork-3.8.xTo3.9.x-DP1305
13	Nexus 70xx	Cisco-Nexus70xx-v3.6.4.0.jar	PrimeNetwork-3.8.xTo3.9.x-DP1305
14	UCS	Cisco-ucs-v3.5.4.0.jar	PrimeNetwork-3.8.xTo3.9.x-DP1305
15	ME3600/ME3800	Cisco-ME36XX-ME38XX-v3.6.0.0.jar	PrimeNetwork-3.8.xTo3.9.x-DP1305
16	Mib2	Mib2-v3.5.3.0.jar	PrimeNetwork-3.8.xTo3.9.x-DP1305
17	Cisco-NCCM_Core	Cisco-NCCM_Core-v3.4.3.0.jar	PrimeNetwork-3.8.xTo3.9.x-DP1305
18	Cisco-NCCM_IOX	Cisco-NCCM_IOX-v3.4.1.0.jar	PrimeNetwork-3.8.xTo3.9.x-DP1305
19	ASR 10xx	Cisco-ASR10xx-v3.6.0.0.jar	PrimeNetwork-3.8.xTo3.9.x-DP1305
20	Cisco-Modules	Cisco-Modules-v3.5.2.0.jar	PrimeNetwork-3.8.xTo3.9.x-DP1305
21	ASR 5000	Cisco-ASR5000-v3.4.3.0.jar	PrimeNetwork-3.8.xTo3.9.x-DP1305
22	Cisco-Others *	Cisco-Others-v3.3.1.0.jar	PrimeNetwork-3.8.xTo3.9.x-DP1305
23	7600/6500 IOS	Cisco-76xx_65xxIOS-v3.7.0.0.jar	PrimeNetwork-3.8.xTo3.9.x-DP1305
24	ASA 5000	Cisco-asa55xx-v3.3.0.0.jar	PrimeNetwork-3.8.xTo3.9.x-DP1305
25	70xx	cisco-70xx-v3.3.1.0.jar	PrimeNetwork-3.8.xTo3.9.x-DP1303
26	ACE 4710	Cisco-ACE4710-v3.3.1.0.jar	PrimeNetwork-3.8.xTo3.9.x-DP1305
27	Generic-ICMP	Generic-ICMP-v3.2.0.0.jar	PrimeNetwork-3.8.xTo3.9.x-DP1305
28	UBR 100xx	Cisco-UBR100xx-v3.2.0.0.jar	PrimeNetwork-3.8.xTo3.9.x-DP1301
29	ME3400	Cisco-3400ME-v3.2.0.0.jar	PrimeNetwork-3.8.xTo3.9.x-DP1301

30	ME3750	Cisco-3750ME-v3.2.0.0.jar	PrimeNetwork-3.8.xTo3.9.x-DP1301
31	ISR 19xx	Cisco-ISR19xx-v3.2.0.0.jar	PrimeNetwork-3.8.xTo3.9.x-DP1301
32	45xx	Cisco-45xx-v3.2.0.0.jar	PrimeNetwork-3.8.xTo3.9.x-DP1301
33	ISR 29xx	Cisco-ISR29xx-v3.2.0.0.jar	PrimeNetwork-3.8.xTo3.9.x-DP1301
34	49xx	Cisco-49xx-v3.2.0.0.jar	PrimeNetwork-3.8.xTo3.9.x-DP1301
35	ISR 39xx	Cisco-ISR39xx-v3.2.0.0.jar	PrimeNetwork-3.8.xTo3.9.x-DP1301
36	UBR 72xx	Cisco-UBR72xx-v3.2.0.0.jar	PrimeNetwork-3.8.xTo3.9.x-DP1301
37	100xx	Cisco-100xx-v3.1.0.0.jar	PrimeNetwork-3.8.xTo3.9.x-DP1206

*See [Appendix A](#).

4 Resolved Defects

This section lists all defects that are resolved in this DP. Because defect fixes are cumulative and may be inherited from previous DPs, this section also lists which DP provided the resolution.

The following defects are resolved in CiscoPrimeNetwork-3.8.xTo3.9.x-DP 1305

S No	Defect	Platform	Headline
1	CSCug50986	Nexus 7000	In Nexus VNE flash is not getting modelled
2	CSCuh25141	Nexus 3000	IP intf table missing when port channels configured with ipv6:Nexus3K
3	CSCuh29022	ASR 9000	ASR9K: VNE inventory does not show default VLAN bindings for PW
4	CSCuh08869	ASR 9000	P2mp tunnels are wrongly modeled as p2p tunnel
5	CSCua65296	CRS	ANA37313/DP13 XR412 cefc power status alarm not cleared for SPA down/up
6	CSCuh10999	XR 12000	Pluggable Transceiver panel is not showing for Pluggable ports - GSR-XR
7	CSCuc98392	All Cisco Devices	PN-7600,A903- Link down traps for TP tunnel have wrong location
8	CSCue08634	All XR Devices	IPV6 access-list will not display the protocol-specific attribute.
9	CSCud58694	ASR 9000	VRRP Group config Invalid Virtual IP Address populating in ASR 9k
10	CSCue30926	Nexus 7000	ospfv3 delete is taking a lot of time to reflect when modeled as evne
11	CSCue38089	ASR 1000	ASR1K has no interfaces
12	CSCue47710	All XR Devices	PN-NCCM IOX device defined with IPV6 fails event triggered conf backup
13	CSCue65347	ASR 903	PN: IP Interface is being deleted and not return after card out/in
14	CSCue92339	All Cisco Devices	Missing info under Clock in ASR903 & 7600 device inventory
15	CSCuf05747	ASR 901	ASR 901 showing with wrong port status information
16	CSCuf30430	ASR 901	Correlation flow failed going through encapsulation untagged on SI
17	CSCuf60639	ASR 9000	Card oper State changed syslog not cleared
18	CSCuf65479	XR 12000	T3/E3 Ports under the card SPA-2XT3/E3 are not modeled in PN- C12K
19	CSCug10225	All Cisco Devices	alarm id duplication in mib2-send-alarm-msg-util.xml
20	CSCug10259	Cisco 7600	PN: Traffic Eng LSPs not updated after port down
21	CSCug11495	ME 6524	REP is not supported by ME6524 series devices
22	CSCug13285	ASR 9000	Flash not modeled correctly for XR 4.2.1 ASR 9k
23	CSCug14910	Nexus 7000	LAG topology is not formed between nexus7k and Nexus5k devices
24	CSCug17375	All Cisco Devices	The 'MPLS TP LSP down syslog' alarm is not associated with LSP
25	CSCug17323	CRS	VNE multicast PIM IPv6 xml device query not correct
26	CSCug19500	All Cisco Devices	UnsupportedOperationException in Mib2StpServicePropertiesParser
27	CSCug22968	Nexus 7000	Nexus7K: NullPointerException in CiscoNexusVrfAllParser
28	CSCug29112	All Cisco Devices	e1 and cem oper and admin status is not refelected correctly in PN
29	CSCug31360	Nexus 7000	CLEAR events for Nexus Syslogs creates separate Tickets
30	CSCug35754	All Cisco Devices	Only 1 PTP interface populated in PTP Service for MWR2900 device

31	CSCug40266	ME 3600	Link not discovered if both LLDP and CDP configured
32	CSCug43235	ASR 9000	PN:Card down A9K-8T-B on ASRK isn't reflected in ANA
33	CSCug47335	All XR Devices	PN- config backup, image import&distribute, fails IOX defined with IPV6
34	CSCug48464	ASR 903	ASR903:Product scheme should not contain ClockService registrations
35	CSCug54195	ASR 9000	PN - MPLS TE Tunnel LSP doesn't display Outgoing Interface and Label
36	CSCug57407	CPT	reg delay for LINEPROTO-5-UPDOWN syslog in cisco-syslog-repository
37	CSCug60096	All XR Devices	CRS1: PN fails to parse SIP node status changed syslog
38	CSCug62422	ASR 9000	P2MP TE tunnel type is discovered after more than 30 minutes upon change
39	CSCug63827	ASR 9000	Product scheme should not default to IPCore scheme - ASR9K
40	CSCug67725	CRS	CRS1: Wrong association for SPA 'card out/in syslog' event
41	CSCug68984	ASR 9000	LLDP registrations in product-evne is missing for ASR9K
42	CSCug78208	Generic VNE	Generic VNE does not support syslog forwarding 3.7.3 and above
43	CSCug75156	All Cisco Devices	NEIM Distribution failure on bsh java exception
44	CSCug75837	Nexus 7000	SSH is giving timeout because of incorrect terminal width for nexus7k
45	CSCug79696	ASR 9000	PN:ASR9K does not show LSP under MPLS-TP tunnel and cause service disape
46	CSCug82666	All Cisco Devices	Short reg. delay in OIR-6-INSCARD parsing causing false card out alarms
47	CSCug90012	XR 12000	physical iox telnet command registration fails for GSR 12k IOX 3.9 ver
48	CSCug91072	Cisco 7600	OSPF Interface attribute mismatch between PN and device cli output
49	CSCug91320	ASR 9000	Wrong Hardware type for ASR-9000v card
50	CSCug95015	ASR 5000	ASR 5k has the same alarm id for two different alarm types
51	CSCug99852	All XR Devices	PN: NCCM show that IOX restore config is success even that it fail
52	CSCuh03234	Nexus 3000	All the port status are shown unknown for Nex3k devices
53	CSCuh14791	Nexus 1000	MAC Address is not populated for Ports under port layer
54	CSCuh21862	XR 12000	Pluggable type showing wrong for unsupported pluggable port
55	CSCuh19491	Nexus 5000	EVNE does not work for VRF in Nexus5k devices.
56	CSCuh03432	Cisco 7600	dram usage registration should be optimally queried for 7600.
57	CSCuh06803	All Cisco Devices	difference % alarm-type & mib2-send-alarm-msg-util on types 1362,1363
58	CSCuh05629	ASR 9000	Wrong Hardwaretype for A9K-2KW-DC power module
59	CSCtw61472	ASR 903	vne is modeling both flash and bootflash though dir all command is disp
60	CSCuf05186	Catalyst IOS 6000	NVRAM size shown as -1 & device serial no. is not populated for 6500VSS
61	CSCug68379	ACE 4710	Software Version info missing for ACE4710 device[pcm-m22]
62	CSCug55925	CRS	System Name is showing as chassis id in LLDP Global Properties - IOX
63	CSCug71928	MWR 2900	MWR Controller T1/E1 properties returns -1 when admin/oper down
64	CSCug86933	XR 12000	Pluggable type is missing for some interfaces in GSR-XR
65	CSCuh11764	All Cisco Devices	Interface description value is not getting populated automatically in PN

The following defects are resolved in CiscoPrimeNetwork-3.8.xTo3.9.x-DP 1303

S No	Defect	Platform	Headline
1	CSCue87299	Nexus 3000	Nexus 3k physical is not modeling in PN 3.8.1
2	CSCue72263	ASR 9000	ISIS values are not reflected in Prime Network
3	CSCuf52803	All Cisco Devices	BfdCorrelationResolvingFlowRequestMsg flow stuck in an endless loop
4	CSCue93598	All Cisco Devices	NewCiscoNexusTelnetCollector is getting stuck and reopen ssh all the tim
5	CSCue51047	CPT	VNE drivers starting from DP1207 are not compatible with 3.8.x platform
6	CSCuf02751	CPT	Expedite command key's are throwing exception
7	CSCue53952	CPT	VNE can't switch port after CPT reboot or power recycle

8	CSCuf60995	ASR 9000	PN: PW on IOX Inventory is not seen and Exception in GUI is thrown
9	CSCuf13432	CPT	Exception thrown in AVM log during RP switchover parsing
10	CSCuc77359	ASR 903	Clock PTP Service not populated or has wrong PTP State for ASR903/901
11	CSCuc83565	ASR 903	ASR903 EVNE does not reflect config changes
12	CSCud97831	All Cisco Devices	Incompatible MLPPP information - encounters twin dc exception
13	CSCuf06080	ASR 9000	EVNE not working with DWDM modules
14	CSCuc96770	All Cisco Devices	Parse utility violation in VNE parsers.
15	CSCue04500	All Cisco Devices	Device CPU spike caused by repetitive commands
16	CSCuf24902	All Cisco XR Devices	EVNE not working for LLDP
17	CSCuf25577	All Cisco Devices	Entries aren't added in flapping-app for eve \"entity state oper disabled
18	CSCuf38360	All Cisco Devices	CSCtw75412 code change picked by 1310 DP not compatible with 3.8.X FW
19	CSCue71985	ASR 9000	ASR9K: Wrong association of syslog alarms for tp-tunnel interfaces
20	CSCue69951	ASR 9000	ASR9K to use new 64bit MIB parameters of CISCO-ENHANCED-MEMPOOL-MIB
21	CSCue23276	Catalyst IOS 6000	6500VSS is not modeled in PN39
22	CSCue48689	Nexus 7000	Nexus VNE - LAG Partner System Identifier is parsed from the wrong place
23	CSCue32140	Nexus 7000	ARP table for few VRF does not model for Nexus 7k
24	CSCuf39058	Nexus 7000	SUP2E redundancy status not discovered, primary always shown as none
25	CSCue33352	All Cisco XR Devices	DP code change due to FW code fix version 3.9
26	CSCue36578	All Cisco Devices	IOS: No physical command expedited on %OIR-6-INSCARD syslog
27	CSCue38020	All Cisco Devices	interfaces are modeled as E1/T1 instead of Serial
28	CSCuf26689	ASR 903	tunnel mid-points events are associated with the ME and not the tunnel
29	CSCue38089	ASR 1000	ASR1K has no interfaces
30	CSCuf06545	Nexus 7000	Nexus7009 investigation state shows 'partially discovered' in PN[pc-m12]
31	CSCue40295	ASR 9000	PN: ASR9K with EVNE has faulty module
32	CSCue43273	Nexus 7000	PN: Loopback interface state is not being updated after poll now
33	CSCue45356	Nexus 3000	Operating System DC is not modeling in reduced polling mode on Nexus3k
34	CSCue45955	Nexus 7000	PN: Interface is down syslog does not parse location
35	CSCue46186	Nexus 7000	PN: service alarm appear after 15 min when shutdown Nexus int
36	CSCue81102	Nexus 7000	CE Scale AVM crashes after running with full noise
37	CSCue47404	ME 3800	Vrf table throws Class cast exception in GUI for whales
38	CSCuf50682	ASR 9000	PIM Syslogs are processed but not reflecting in Vision
39	CSCue96677	ASR 903	ASR903 VNE redundancy properties are not updated after RSP switchover
40	CSCtw61690	Cisco 7600	LSP end points role oper state of neighbor device not changed to 'DOWN'
41	CSCue94445	All Cisco Devices	clock service: NetSync does not getting correlated to Link Down
42	CSCue59321	All Cisco XR Devices	Destination wildcard IP address is showing wrong for XR devices
43	CSCue60740	ASR 9000	MLPPP not showing in logical inventory
44	CSCue68543	Nexus 3000	Nexus 3k - CDP version shows wrong value in reduced polling mode
45	CSCue69887	ASR 903	ASR903 prospectus needs to be corrected for MLPPP IMO
46	CSCue72527	All Cisco Devices	Few events are pointing to wrong defaults in mib2-eventmanager.xml
47	CSCue85028	CPT	LINEPROTO syslog recognized as generic when CDP is not enabled
48	CSCue91182	Cisco 7600	PN: evil twin exception appear in log on 7600 with mpls tp tunnel
49	CSCue91708	ASR 9000	Process ID output mismatch is seen in Prime Network
50	CSCue92339	All Cisco Devices	Missing info under Clock in ME3600 device inventory
51	CSCue96943	CPT	PN: CPT - nvram is presented as flash in device inventory
52	CSCuf01428	CPT	PN: BFD doesn't model in CPT 200
53	CSCue45613	Catalyst IOS 6000	port description is coming wrong in 6500 VSS

54	CSCuc89146	All Cisco IOS Devices	PN-7600-903- MPLS-TP BFD interval shows wrong interval
55	CSCud69607	ASR 9000	PN - A9K Wrong direction of LSP in MPLS-tp tunnels tab
56	CSCue08742	All Cisco XR Devices	log function will be display as specific protocol in IOX access-list
57	CSCuf41482	Cisco 1800	PN: 1841 slot type appear as 2801
58	CSCuf61058	IOS 12000	GSR-12K has 4 DC power supplies but physical inventory shows only 2 DC
59	CSCuf44153	All Cisco IOS Devices	PN: StringIndexOutOfBoundsException appear on CiscoArchiveLogParser.pars
60	CSCue33187	ASR 9000	PN- Duplicate port on satellite chassis of ASR9k
61	CSCue47902	Nexus 5000	CDP version modeling default value in Nexus 5k and 3k
62	CSCue68575	All Cisco Devices	ASR903 - IPv6 Routing table Protocol Type is missing Loopback interface
63	CSCue43488	ASR 903	Port MTU Speed Shown Wrong Values - ASR903
64	CSCug01657	ASR 903	Active, Standby Card expedite needs to be handled for ASR903
65	CSCue90516	All XR Devices	Some of the PIM neighbor loss syslog alarms are not cleared
66	CSCue36703	All Cisco IOS Devices	IOS: Missing processing of %CONTROLLER-5-UPDOWN syslog messages
67	CSCue21779	All Cisco IOS Devices	Missing support for syslog %SONET-4-ALARM for IOS devices

The following defects are resolved in CiscoPrimeNetwork-3.8.xTo3.9.x-DP 1301

S No	Defect	Platform	Headline
1	CSCud37211	CPT	link missing, cdp table on CPT device missing local port
2	CSCud71852	All Cisco Devices	PN: OSPF neighbor up syslog has missing location ME
3	CSCtw29586	ME 3600	FlashDevice Size not modelled
4	CSCub33493	Nexus 7000	ANA373 PP3/DP16 Nex7K no card down/up seen for N7K-C7010-FAB-2 in EVNE
5	CSCud75736	XR 12000	12k VNE in Unsynchronized State
6	CSCud79095	CRS	interface is modeled as T3 instead of Serial
7	CSCub86764	All XR Devices	IPV6 access-list not modeling in few XR devices.
8	CSCuc63379	All Cisco Devices	NCCM failed to backup/restore Run-config using SCP/SFTP with DP1209
9	CSCuc77359	ASR 903	Clock PTP Service not populated or has wrong PTP State for ASR903/901
10	CSCuc81181	ME 3800	PN: Unable to upgrade 3800ME/3600ME image
11	CSCud82772	7200	CDP is not modeling for 7206VXR is running with IOS Version 12.3(21)
12	CSCuc86976	ASR 9000	ANA 3.8 : ClassCastException in modeling ASR9k
13	CSCud97595	All Cisco Devices	bgp neighbor entry modeling has changed in the latest DP
14	CSCue00084	ME 3400	no MPIDs under CFM (no local nor remote)
15	CSCud08757	ASR 9000	MPLS TP, working LSP modeled with default IN/OUT lable
16	CSCud09202	All XR Devices	PN: GetPseudowireKeywithTunnelIndex.getKey failed parse long number
17	CSCud09660	Catalyst 2900	PN Catalist 2960 48TCL getting java.lang.NullPointerException at AVM.out
18	CSCud11937	All Nexus Devices	OS and Flash modeling for for Nexus 3K/1010/1000v
19	CSCud14066	ASR 901	PN 3.9 Bridge domain for ASR901 not working with reduced polling
20	CSCud15666	ASR 901	VRRoutingTarget and LAG registration can be optimized to reduce device
21	CSCud17510	CRS	CRS: MLPPP is not modeled
22	CSCud19442	Catalyst 6000	Serial number and device series missing for 6500-vss
23	CSCud19634	UCS	UCS – serial number is missing for Fan and powersupply modules
24	CSCud19872	ASR 9000	Wrong location of syslog event when I/F is bundle
25	CSCud19889	ASR 9000	illegal question on ANA
26	CSCud25096	All XR Devices	Poor handling of error conditions in CiscoRouterIOXCPUUtilizationParser
27	CSCud28838	All Cisco Devices	BGP link down events are not getting generated

28	CSCud29020	Cisco 7600	PN:EVC under Ethernet LMI not removed as EVNE
29	CSCud32761	All Cisco Devices	PN:STP mode not getting updated with reduced polling for IOS device
30	CSCud40225	7600	PN:MPLS TP enabled links not getting added/removed as EVNE -7600
31	CSCud42340	ASR 9000	Multiple VRRP group are not populating in VRRP group inventory for ASR9k
32	CSCud44619	ASR 9000	AVM Crash due to huge number of VRF route entries
33	CSCud52593	7600	PN: Cisco HSRP state none active not expedite HSRP
34	CSCud52807	ASR 903	EVNE – LSP role is not 10odeled after lockout
35	CSCud53810	All Cisco Devices	Squeeze timed-out during CCM Clear Flash on ASR901
36	CSCud56263	Nexus 1000	Nexus 1010 is not modeling thre ssh in Prime Network 3.10
37	CSCud63521	Nexus 7000	LACP topology modeling fails for Nexus 7k
38	CSCud37404	ASR 903	ASR903 – ME utilization resources should be polled with status interval
39	CSCud15692	Catalyst 6000	Fan and power supply slot number not to be displayed under tree view
40	CSCud69635	ASR 9000	PN – A9K displays non-existent mpls-tp info

The following defects are resolved in CiscoPrimeNetwork-3.8.xTo3.9.x-DP 1210

S No	Defect	Platform	Headline
1	CSCub98749	ASR 5000	No Physical ports are modeling in asr5500 devices
2	CSCts79008	Nexus 5000	Memory usage information is missing in Nexus5K
3	CSCtw55497	All Cisco devices	ANA: PW Type not correct which caused Crosslaunch to PPM not work
4	CSCtw98131	All Nexus Devices	Pathtrace didn't reach ipinterface on nexus device
5	CSCua20612	Nexus 5000	Entity vendor type is 10odeled10 with invalid OID for PwrSupply
6	CSCub93764	7600	Modeling problem in Vsi's of 7600 device
7	CSCuc32803	ASR 9000	ASR9K: VPN ID for VSI is Undefined
8	CSCuc44241	ASR 901	Clock Cource Adresses in PTP Interfaces List not in IP-Address format
9	CSCuc59091	All Cisco devices	7609 12.2(33)SRA: BFD container has not been discovered
10	CSCuc59598	ASR 903	Bridge table and bridge mac address registration is under BridgeDC
11	CSCuc64545	ASR 1000	XE03.06.01S picks default software version – ASR1k
12	CSCuc38839	All Nexus Devices	Many Nexus devices NVRAM Size modeling with wrong value in PN3.10
13	CSCuc39099	Cisco ACE 4700	Device series not modeling in ACE in PN3.10
14	CSCuc78322	All XR Devices	OTN up/down trap ASR9K and CRS:IPODWDM is dropped as Generic event
15	CSCud09398	ASR 901	Pseudowire is not 10odeled10 for ASR901
16	CSCuc91568	All Cisco Devices	OSPF neighor down alarm not created due to ospf neighbor parser issue
17	CSCub55128	Nexus 7000	LAG down ticket not raised in N7K for Port Channel shut down
18	CSCub29920	ASR 9000	ASR9K: Inner VLAN ranges not being modeled

The following defects are resolved in CiscoPrimeNetwork-3.8.xTo3.9.x-DP 1209

S No	Defect	Platform	Headline
1	CSCty14476	All IOS Devices	3.8 ENS service/trap/syslog duplication populate unselected entries
2	CSCua52284	CPT	CPT: AIS and LCK syslog not getting captured in ANA
3	CSCub20736	CRS	Power Shelf and Fan Tray getting wrongly modeled in the case of MC CRS
4	CSCub23839	Nexus 7000	Admin status of few ports are shown as unknown for Nexus7k
5	CSCub26750	7200	CPN generates same cisco port key for two different channelized ports

6	CSCub53645	ACE 4710	ace4710 physical inv not modeling
7	CSCub67923	7600	Wrong inventory modeling for MPLSTE
8	CSCub75660	CPT	CPT600: Wrong ifSpeed value for some TenGigE interfaces
9	CSCub76594	GSR-IOS	mpls te tunnel parser sometimes very slow and even get stuck
10	CSCub82417	7600	DWDM events dropped as generic in PN 3.10
11	CSCub83365	CPT	CPT600: VNE fails to parse Link Down/Up traps
12	CSCub83788	All XR Devices	Local BGP ID not modeling for Ipv6 neighbors in XR devices
13	CSCub85401	CPT	Unsafe coding of 'while' loop caused AVM crash
14	CSCub90160	ASR 9000	VRF seen when using product scheme on IOS XR
15	CSCub93137	ASR 903	The Product scheme for ASR903 VNE includes VRF registrations
16	CSCub94847	Nexus 1000	Port Display Name is changed & not in sync with Mib in GUI for N1k.
17	CSCub99961	ASR 9000	ASR9K: No PWs over MPLS-TP tunnels are discovered
18	CSCuc02718	All IOS Devices	SNMP Deploy to startup config also affects running config for IOS
19	CSCuc05159	Nexus 7000	Nexus70xx: No expedite commands with delays when parsing traps/syslogs
20	CSCuc05675	CRS	Issue in modeling of CRSXR Flash Files Systems
21	CSCuc10524	All IOS Devices	Error in Fetching startup config after restore \"runningandstartup\" option
22	CSCuc12772	ASR 903	ASR903: Product scheme should not contain MPLS registrations
23	CSCuc12837	ASR 903	ASR903: scheme should not contain SBcregistrations
24	CSCuc13818	7200	Modeling problem in Vrf table of Cisco 7204VXR device
25	CSCuc15380	7600	ACL entires contain \"log (xxx matches)\" not displaying in GUI
26	CSCuc20351	ASR 9000	ASR9K: MPLS-TP tunnels are not discovered
27	CSCuc22966	ASR 9000	ASR9K: Protective LSP is created regardless of TP tunnel configuration
28	CSCuc22163	ASR 901	Missing REP topo link between primary edge and next intermediate node
29	CSCuc18974	All Cisco Devices	Bean shell exception error is seen while executing NCCM Priority Update.
30	CSCub76619	7200	moduleIfIndex is not moduled correctly

The following defects are resolved in CiscoPrimeNetwork-3.8.xTo3.9.x-DP 1208

S No	Defect	Platform	Headline
1	CSCtx52035	All Cisco Devices	Time out exception while executing vlan related scripts in XR.
2	CSCua02240	All Cisco IOS Devices	ATM traffic profiles are not modeled
3	CSCua97925	All Cisco Devices	Unable to open non Cisco events tab in VCB
4	CSCub13192	7600	Internal port of ACE module should not be modelled
5	CSCub2585	ASR 5000	ASR5500 ssh v2 vne does not model
6	CSCub25905	Nexus 5000	FC ports are not modeling – Nexus5k
7	CSCub26524	Nexus 7000	ARP Table is not 11odeled11 for Nexus7K
8	CSCub28652	Nexus 1000	ARP Table is not modeled for Nexus 1000v in Reduced Polling
9	CSCub32796	ASR 5000	ASR5K traps are not expedited
10	CSCub33252	Nexus 7000	Management Interface is not modeling under CDP for Nexus7K
11	CSCub34233	CPT	Prime Network is not discovering MPLS-TP enabled links from CPT devices
12	CSCub34894	CRS	Chassis id should not be -1 for CRS
13	CSCub37138	ASR 5000	For ASR5500 NCCM Configuration backup fails using SFTP
14	CSCub57403	GSR-IOS	PN – No BFD Container GSR-IOS VNE
15	CSCtu52785	CPT	40 mins to discover new TP Tunnel
16	CSCub18045	CPT	CiscoNGXPTelnetCollector has a hardcoded prompt \" >\"

17	CSCub73267	CPT	CPT600:NullPointerException caused by CiscoOnsInterfaceStatusParser
18	CSCub79426	ASR 5000	ASR5500 Flash size information incorrectly populated
19	CSCub43770	ASR 9000	ASR9K: MPLS-TP tunnel bandwidth is undefined
20	CSCub31506	All Cisco IOS Devices	NCCM-Distribute IOS image result not clear
21	CSCub26143	Nexus 1000	S/w Version attribute is not displaying for Nexus1000v
22	CSCua71014	Nexus 1000	Redundancy of the VSM not shown in Nexus 1000v
23	CSCub26195	ASR 903	RuntimeException: Duplicated XID error while modeling ASR903

The following defects are resolved in CiscoPrimeNetwork-3.8.xTo3.9.x-DP 1207

S No	Defect	Platform	Headline
1	CSCua19364	ASR 1000	ASR1K: POS channels and POS interfaces on CHOC12 card are not modeled
2	CSCua31306	UCS	Oper state is not getting updated when SFP-not-presentEvent got cleared
3	CSCua70896	Nexus 1000	Chassis serial number and description are not displayed in Nexus1000v
4	CSCua70977	Nexus 1000	Hardware version is not displayed for VEM module in Nexus 1000v
5	CSCua71014	Nexus 1000	Redundancy of the VSM not shown in Nexus 1000v
6	CSCua84524	ASR 9000	JUNDP Y1731 : On Demand Probe Script out work for below operations
7	CSCua84644	7600	CFM RemoteMaintenanceEndPoints are not modeled for 7600
8	CSCua85627	All Nexus Devices	port 12odeled1212g12 graph link disabled for Nexus device.
9	CSCua86136	ASR 901	PW information missing from the local interface (ASR901)
10	CSCua88111	ME 3400	STP is not modeling in ME 3400 device
11	CSCua89861	All Cisco IOS Devices	PN isn't modeling correct an Ipv6 access-list
12	CSCua90574	All Cisco Devices	\“snmp link down\” trap should be with \“is-correlation-allowed\” false
13	CSCua91191	Nexus 7000	Mgmt vrf not modeling in Nexus 7000 device
14	CSCua96058	Nexus 1000	Routing Entity table is not modeling for Nexus 1000v
15	CSCub05120	ASR 1000	Association missing in POS interface and Layer2(PPP) information
16	CSCub05244	ASR 9000	To support L2-CFM-6-MEP_CHANGE msg as a part of RDI syslog
17	CSCub10665	Cisco 2800	Card NM-1T3E3 is modeled with RJ45 connectors, where it should be BNC
18	CSCub15799	All XR Devices	Unable to open Cisco events tab in VCB
19	CSCub20574	7600	MplsTP LSP status showing as UNKNOWN when tunnel is locked at both ends
20	CSCub20825	7600	evil twin dc exception- POS port missing in 7600 device
21	CSCub20989	ASR 5000	StarECSTotalDNSLearntIPv4Threshold Trap is not displayed in ANA
22	CSCub21606	CPT	CPT VNE is not modelling
23	CSCub28591	CPT	MPLS-TP Global configuration scripts not working for CPT VNE
24	CSCub32991	All Cisco Devices	DP filename should be updated in manifest file for PN 38/39 DP
25	CSCub37044	All Cisco Devices	Rollback of DP to DP6 after installing 3.8 PP5

The following defects are resolved in CiscoPrimeNetwork-3.8.xTo3.9.x-DP 1206

S No	Defect	Platform	Headline
1	CSCts17077	7600	Duplicate ports displayed on module
2	CSCtz95985	Cisco 3745	Generic module is displayed for new module added through VCB-3745

			device
3	CSCtz96406	All Cisco Devices	Legacy Command Builder Scripts for running config from file not working
4	CSCtz96565	ASR 1000	IPV6 source and destination address are not populating in GRE tunnels
5	CSCua06621	ASR 5000	APN accounting mode none is displayed as unknown
6	CSCua30699	All Cisco Devices	MplsTP mid point LSP changes are not considered for EVNE update
7	CSCua32752	ASR 9000	Supported interfaces for configuring probe endpoint on ASR9K for Y1731
8	CSCua34010	Nexus 5000	FC ports Status and properties are not modeled properly for Nexus 5K.
9	CSCua34098	Nexus 5000	Interfaces are not modeled when interface is operationally Down(Nex5K)
10	CSCua47017	CPT	CPT:"configure SLA" script attribute validation is not properly done
11	CSCua51812	Nexus 5000	ARP Table is not modeled for Nexus5K
12	CSCua52383	ASR 1000	AVM exits with OutOfMemory error for ASR1k
13	CSCua55105	ASR 9000	Y1731:Unable to delete Probe from a Profile since its having dependency
14	CSCua57255	CPT	Y1731 : Script error is seen when target mac-address is selected.
15	CSCua57751	All Nexus Devices	Multi-Chassis display problem in Nexus7k and Nexus5k
16	CSCua57830	All Nexus Devices	Nexus 7k & Nexus 5K remains in "Unsynchronised state"
17	CSCua62817	Cisco UCS	BackPlane 5 is not modeled in UCS
18	CSCua67495	ASR 9000	Satellite ICL container with no Satellite configured
19	CSCua68078	Nexus 5000	Powersupply and Fan modules are not modeling properly in Nexus5K
20	CSCua68651	MWR 2900	Typo in Access List parser causes missing entries in logical inventory
21	CSCua75020	ASR 9000	JUNDP Y1731: Packet every operation in Global SLA Script has error

The following defects are resolved in CiscoPrimeNetwork-3.8.x-DP 6.0

S No	Defect	Platform	Headline
1	CSCty64840	ASR-5000	Wrong alarm ids set for asr5k traps
2	CSCtz82733	XR-12000	Ipssec Technology need to be disable in GSR XR
3	CSCtz33866	ASR-9000	ANA3.7.3.1.3/DP12-BGP down trap" not clearing when neighbor established
4	CSCtz34937	All Cisco Devices	BGP down traps correlate each one to the other result in loops
5	CSCtz39893	ASR 9000	MPLS TP: LSP Mid Point, Working LSP's details are missing.
6	CSCtz43981	CPT	Status of SFP pluggables not updated even after pluggable were removed
7	CSCtz89362	All XR Devices	Failed find key for DSX1 channel when parsing dsx1LineStatusChange trap
8	CSCtz49582	CPT	Command builder scripts are not working .
9	CSCtz72314	All Cisco IOS Devices	Switching PW modeling needs to be handled in ANA
10	CSCtz75324	ASR-903	Two Management interface is shown after active rsp removal in Rudy
11	CSCtz68852	CPT	CPT:Product Id(PID) for E1T1 pluggable is not proper
12	CSCtz88335	All Cisco Devices	Ethernet status does not match BaseBand on GSR 1200 with IOX XR
13	CSCtz91222	MWR-29xx	Default registration in product evne file is wrongly pointing in MWR29xx
14	CSCtx86760	All Cisco IOX Devices	Wrong pluggable transceiver out tickets on GSR 12k IOX

15	CSCtz47910	All Cisco Devices	DSO bundle down service alarm is not cleared when line has loopback
16	CSCtz49881	ASR-1K	3.8.X DP5 FCS: Traffic Engineering tunnel not 14odeled14 properly- > ASR1K
17	CSCtz52243	Cat-356x	Default route shown twice in Routing table – Cisco 3560
18	CSCtz60710	All Cisco Devices	Missing MPLS interfaces on 7600
19	CSCtw66269	All Cisco IOS Devices	CDP Interface Hyperlink is mapping incorrectly _GSR_XR_XR 412_ANA38 DP
20	CSCtz61695	UBR-10k	PN39 : Duplicate entries in ciscovdc-cisco-uBR100xx-product-scheme-evne

The following defects are resolved in CiscoPrimeNetwork-3.8.x-DP 5.0

S No	Defects	Platform	Headline
1	CSCto76406	ISR-3900	ISR3900:entPhysicalContained is shown wrong for GLC_LH_SM SFP
2	CSCtr42155	All Cisco Devices	ExpediteArchiveLog uses Timer object
3	CSCtr95939	All XR Devices	CSC PathTrace fails
4	CSCtw55497	All Cisco Devices	ANA: PW Type not correct which caused Crosslaunch to PPM not work
5	CSCtw79231	All Cisco Devices	EFP updates are not reflected immediately on ASR903 using Poll Now
6	CSCtw82022	ASR-901	Aggregation link is not shown under Links
7	CSCtx07998	ASR-9000	ASR9K-BGP-Timers not being updated in Network Vision
8	CSCtx57489	All Cisco Devices	While adding new vne as Generic snmp getting exception in the log
9	CSCtx83764	XR-12000	bgp link GVPE isn't discover between CE and PE device
10	CSCty19092	All Cisco Devices	CiscoKeyFactory returns null key for EFP interface
11	CSCty33020	All XR Devices	VSI links do not go down in \"link down\" scenario on GSR-IOX
12	CSCty33189	All Cisco Devices	MPLS link doesn't go down when removing MPLS config from 7600 ES+ intf
13	CSCty35481	ASR-9000	incorrect outgoing interface for end-point lps on IOX devices
14	CSCty47377	ASR-9000	MPLS TP configured with subinterfaces are not modeled the same.
15	CSCty63751	All Nexus Devices	Missing ports from EDS Ports property
16	CSCty69043	CPT	Card name displays junk values
17	CSCty82838	ASR-1000	ASR1k models with twin DC,Duplicate XID exception
18	CSCty83250	ASR-1000	ASR1k models with exceptions in SBE parser, CiscoRouterTunnel6rdParser
19	CSCty85217	ASR-1000	IPSec tunnel does not model when source is an interface
20	CSCty91357	CPT	Software version is showing as software description.
21	CSCty93202	All Cisco Devices	Mpls LDP neighbor source not displayed if the source is a TP Tunnel
22	CSCtz02894	ASR-9000	ASR9k: power supply card status is set as \"status\" for evne
23	CSCtz04339	All Cisco Devices	dp name in manifest file has to be changed to prime network
24	CSCtz04949	ASR-5000	Wrong alarm ids for asr5k traps: overlapping with service events exists
25	CSCtz08928	All Cisco Devices	IRD comparison issue in the Routing table entity
26	CSCtz10498	CRS	PN3.8: DP4: Cannot model CRS4S IOS XR 4.1.1 with default scheme
27	CSCtz25044	ASR-9000	CFM Scripts: Wrong Range for \"traceroute cache hold-time\"
28	CSCtz25083	ASR-9000	CFM Scripts: Value not applicable 14odeled in Contnuity Check Script
29	CSCtz31220	ISR-2900	C2951 Modells with NumberFormatException,IllegalArgumentException

The following defects are resolved in CiscoPrimeNetwork-3.8-DP 4.0

S No	Defects	Platform	Headline
1	CSCtu18135	All XR Devices	in some PW link peer isn't presented and local router ip is 0.0.0.0
2	CSCtu95760	CRS	Syslog \"L2-SONET_LOCAL-4-ALARM: SONET0/1/2/0: LAIS\" not supported
3	CSCtw28787	ASR-5K	cannot model an ASR 5K VNE through SSH
4	CSCtw51495	ASR-901	Exception upon executing preview for \"AddHostName Script\" on ASR901

5	CSCtx29511	All XR Devices	Configuration changes are not updated on XR VNE with reduced polling
6	CSCtx51174	All IOS devices	Few scripts needs modification due to the down direction commands issue.
7	CSCtx51695	7600	Few commands needs to be handled for DWDM counters, G709ODU/OUT script
8	CSCtx52035	All XR Devices	Time out exception while executing vlan related scripts in XR
9	CSCtx93011	ASR-901	EFPs are not modeled correctly for ASR 901
10	CSCtx94475	All IOS devices	Not all of the configured timeslots on ds0 are displayed
11	CSCty00921	ASR-5500	ASR5500: Secondary IP address is not reflected in ANA
12	CSCty00938	ASR-5500	ASR5500:Associated Entity field is not reflected in ANA
13	CSCty06574	Nexus-7000	support separate registration for port status module status in Nexus 7k
14	CSCty06831	ASR-5500	ASR5500: IP address is not seen in Export and Import route targets
15	CSCty10686	All Cisco Devices	Container status is Unknown on Fan & PWR modules
16	CSCty18359	ASR-5K	ASR 5K Image distribution fails when password has special characters
17	CSCty19685	CRS	Shutting down a VRRP interface moves the CRS VNE to unreachable state
18	CSCty29568	Cat-356X	"Link down on unreachable" appear after shutting down port
19	CSCty41824	CRS	Support for reduced polling in CRS 16 VE chassis
20	CSCty49971	All Cisco Devices	Correct/Insert description entry in ciscovds-* -entityspec.xml files
21	CSCty53703	7600	LSE forwarding table is not modeled in MPLS TP setup
22	CSCty57838	All Cisco Devices	Timestamp info in the CLI output breaks registrations parser logic
23	CSCty63753	All Cisco Devices	Wrong DC relation getting created for channelized mpls serial interfaces
24	CSCty75781	All XR Devices	Missing generic syslog pattern in parsing rules for IOX devices
25	CSCty79115	7600	LSE 15odeled1515g table – OutInterface need to be handled for MPLS TP tunnel
26	CSCty82080	All XR Devices	BGP AS number does not model under VRF in XR devices
27	CSCty89153	ASR-9K	ICCP/mLACP not modeled on ASR 9K

The following defects are resolved in CiscoPrimeNetwork-3.8-DP 3.0

S No	Defects	Platform	Headline
1	CSCtl87991	ME 3400	No cefcFRUInserted event in Cisco ANA3.7.2
2	CSCtx67427	ASR 9000	channelization configuration isn't remove on vne physical interface
3	CSCtx02470	Activation scripts	Few Activation scripts are not working for Nexus 5010 device
4	CSCty00295	7500	Empty Device Series field in vne's
5	CSCtx97961	ASR 5000	ASR5500 device is not modeling in 3.8.1 on top of Feb DP3
6	CSCtx19245	Activation scripts	Few Activation scripts are not working for Nexus 7000 device
7	CSCtx51174	7600	Few scripts needs modification due to the down direction commands issue.
8	CSCtx87344	7600	7600: ANA is not modeling channelization on CHOC12 card
9	CSCty01162	XR 12000	GSR XR Running with 4.2 not modeling in ANA 3.8
10	CSCtx64484	ASR 9000	ANA not modeling MPLS TP working and Protected LSP number
11	CSCtx76206	ASR 903	Bridges are not 15odeled in ASR903
12	CSCtx68202	ASR 9000	In ASR9000 the VLAN ID field under bridge must be removed.
13	CSCtx17069	ACE 4710	ACE20-MOD-K9 module support for 7600 in ANA 373 DP 10
14	CSCtx61643	ASR 5000	ASR5k: System description is displayed improperly.
15	CSCtx17092	7600	WS-SVC-NAM-2-250S module support for 7600 in ANA 373 DP 10

The following defects are resolved in Prime Network 3.8 DP 2.0

S No	Defects	Platform	Headline
1	CSCts98324	All Cisco Devices	incorrect path for end-to-end pw flow

2	CSCtw68083	All XR devices	The T3 controller is not 16odeled in STS1->CT3->T1 channelization
3	CSCtu34126	CRS	No Driver support for T3/E3 syslog on CHOC12 cards for CRS1
4	CSCtw78527	CRS	Serial interface status is not updated and alarm is not generated

The following defects are resolved in Prime Network 3.8 DP 1.0

S No	Defects	Platform	Headline
1	CSCtr54450	7600	NullPointerException flood the AVM log
2	CSCtr91490	7600	Label Switching table is not 16odeled16 explicit and implicit
3	CSCts41347	ASR 1000	ASR1K: Missing VLAN sub interface down alarm in sub-interface down test
4	CSCtu56055	ASR 1000	ASR1001 15.1(2)S1 support is broken in the latest PRIME NETWORK 3.7.X DP
5	CSCtu34126	CRS	No Driver support for T3/E3 syslog on CHOC12 cards for CRS1
6	CSCts67203	NCCM feature for XR devices	ASR9K: Wrong telnet command for flash-device-info registration
7	CSCtt44090	Nexus 7000	cpu utilization polled every system interval on 7600, evne scheme

Note: For information regarding the support provided in previous DPs, refer to the respective DP Readme files. Links are provided in Section 6.

4.1 Defect Resolutions That Require Cisco Prime Network Patches

The following defect resolutions are contained in this DP. However, to get the complete defect fix you must also install the indicated version (or later revision) of the Cisco PRIME NETWORK patch. The following table lists these defects along with the required Cisco Prime Network patch, and the Cisco Prime Network defect identifier.

To obtain any Cisco Prime Network patches, contact your Cisco representative.

S no	Identifier	Platform	Headline	Cisco Prime Network Release in which it is the dependent Prime Network defect is fixed	Resolved in
1	CSCud97831	All Cisco Devices	Incompatible MLPPP information - encounters twin dc exception	(CSCug48552, CSCud47893) TBD*	Prime Network 38.39x DP 1305
2	CSCuf07526	CPT	LINEPROTO syslog recognized as generic when CDP is not enabled	Prime Network 3.9.0.1.1 (CSCue85028)	Prime Network 38.39x DP 1305
3	CSCue76780	All Cisco IOX Devices	Some of the PIM neighbor loss syslog alarms are not cleared	Prime Network 3.9.0.1.1 (CSCue90516)	Prime Network 38.39x DP 1303
4	CSCuc79033	ASR 903	Add new enums to PN FW code to support the 3.8/3.9 DP code change	Prime Network 3.9.0.0.3 (CSCuc77359)	Prime Network 38.39x DP 1303
5	CSCtz32031	All XR Devices	'Signaling Protocol' is not displayed in Pseudowire Property window	Prime Network 3.9.0.1.1 (CSCue33352)	Prime Network 38.39x DP 1303
6	CSCub64213	ASR 903	ASR903: BFD sessions are not discovered by VNE	Prime Network 3.9.0.0.2	Prime Network 38.39x DP 1209
7	CSCtl87991	ME34xx	No cefcFRUInserted event in Cisco ANA3.7.2	Prime Network 3.8.0.0.3 (CSCtx63565)	Prime Network 3.8 DP3

8	CSCtw68139	XR Devices	Channelization inventory is reporting wrong STS width	Prime Network 3.8.0.0.2 (CSCtu34176)	Prime Network 3.8 DP2
9	CSCtw68083	XR Devices	The T3 controller is not 17odeled in STS1->CT3->T1 channelization	Prime Network 3.8.0.0.2 (CSCtw58067)	Prime Network 3.8 DP2
10	CSCtw78527	CRS	Serial interface status is not updated and alarm is not generated	Prime Network 3.8.0.0.2 (CSCtu95489)	Prime Network 3.8 DP2
11	CSCtr09508	All XR devices	Hyperlink not coming for some Ports under CDP in XR	Prime Network 3.8.1 (CSCtx14725)	Prime Network 3.8 DP2
12	CSCtx02296	7600	FEC Mismatch Counter -1 on DWDM Window	Prime Network 3.8.1 (CSCtu31988)	Prime Network 3.8 DP2
13	CSCtw58024	ASR 903	Metric value shows as "0" in the IS-IS metrics page of ASR903 device	CSCtx35283 (Fix not available)	Prime Network 3.8 DP2
14	CSCtu34126	CRS	No Driver support for T3/E3 syslog on CHOC12 cards for CRS1	Prime Network 3.8.0.0.2 (CSCtw58067)	Prime Network 3.8 DP2

*For fixing the issue CSCud97831 it requires corresponding dependent Cisco Prime Network Fixes.

- If it is Cisco Prime Network 3.8 or Cisco Prime Network 3.8.1.x fix will be given by **Hot Fix**
- If it is Cisco Prime Network 3.9.x fix can be given by **Hot Fix** or preferably via Prime Network 3.9.0.1.3 (planned to be released by mid June 2013) or later.

Note: To obtain the hotfix, please contact your Cisco representative

5 Open Defects

5.1 Device-Specific Open Defects

This sections lists the defects on the devices because of which some features relating to VNE might not work.

S no	Defect ID	Platform	Description
1	CSCtq36525	Nexus 7000	Nexus 7000 – Wrong PID is shown in telnet result for all SFP's available
2	CSCtw65605	Nexus 1000	ANA3.7.XDP9: VEM modules status missing in Nexus1000V
3	CSCud04040	Cisco 7600	PN: Layer 2 tunnel down does not clear after link down/up
4	CSCug18381	CPT	SNMP Agent is getting stuck on CPT 600 device running multiple versions

5.2 Cisco Prime Network-Specific Open Defects

S no	Defect ID	Description
1	CSCud00410	IPv6 access-list with specific protocol will not show match count
2	CSCug60581	PTP mode is coming unknown and priorities are not reflected in PN
3	CSCuh25970	MWR2941: VNE fails to parse %CONTROLLER-5-UPDOWN syslog
4	CSCug17056	Alert Location Field does not reflect corresponding info (eg BDI/VLAN)
5	CSCuh29494	OSPF Interface attribute mismatch between PN and device cli output
6	CSCuh32487	Clock source modeling wrong for T3 controller ports GSR-XR
7	CSCuh37864	Devices fail to model after upgrade to latest release from PN 3.8.1

6 Related Documentation

The following documents provide information that is specific to DPs.

Document	Provides the Following Information on DPs
----------	---

Document	Provides the Following Information on DPs
Cisco Prime Network 3.8 User Guide	Complete details about the <code>ivne</code> script and examples of how to use it, along with troubleshooting tips. There are separate administrator guides for Cisco Prime Network 3.8
Cisco Prime Network 3.8 VNE Reference Guide	List of VNEs supported in Cisco Prime Network 3.8
Addendum: Additional Cisco VNE Driver Support for Cisco Prime Network 3.8	A complete listing of all support that is provided by DPs for the Cisco Prime Network 3.8 releases. This is a companion document to the Cisco Prime Network 3.8 VNE Reference Guide
Cisco Prime Network 3.8 Device Package 1.0 Readme	Content of Prime Network 3.8.x DP 1.0
Cisco Prime Network 3.8 Device Package 2.0 Readme	Content of Prime Network 3.8.x DP 2.0
Cisco Prime Network 3.8 Device Package 3.0 Readme	Content of Prime Network 3.8.x DP 3.0
Cisco Prime Network 3.8 Device Package 4.0 Readme	Content of Prime Network 3.8.x DP 4.0
Cisco Prime Network 3.8 Device Package 5.0 Readme	Content of Prime Network 3.8.x DP 5.0
Cisco Prime Network 3.8 Device Package 6.0 Readme	Content of Prime Network 3.8.x DP 6.0
Cisco Prime Network 3.8 Device Package 1206 Readme	Content of Prime Network 38.39 June DP 1206
Cisco Prime Network 3.8 Device Package 1207 Readme	Content of Prime Network 38.39 June DP 1207
Cisco Prime Network 3.8 Device Package 1208 Readme	Content of Prime Network 38.39 June DP 1208
Cisco Prime Network 3.8 Device Package 1209 Readme	Content of Prime Network 38.39 June DP 1209
Cisco Prime Network 3.8 Device Package 1210 Readme	Content of Prime Network 38.39 June DP 1210
Cisco Prime Network 3.8 Device Package 1301 Readme	Content of Prime Network 38.39 June DP 1301
Cisco Prime Network 3.8 Device Package 1303 Readme	Content of Prime Network 38.39 June DP 1303

For a complete list of Cisco PRIME NETWORK documentation, see:

- [Cisco Prime Network 3.8 Documentation](#)
- [Cisco Prime Network 3.9 Documentation](#)

7 Appendix A

Devices Supported in Cisco-Others-v3.3.1.0.jar Supported Device

The following device series are supported by Cisco-Others-v3.3.1.0.jar

Routers	Switches
Cisco 1000 Series Routers	Cisco Catalyst 2900 Series Switches
Cisco 10000 Series Routers	Cisco Catalyst 2960 Series Switches
Cisco 800 Series Routers	Cisco Catalyst 3500 XL Series Switches
Cisco 1600 Series Routers	Cisco Catalyst 3550 Series Switches
Cisco 1700 Series Modular Access Routers	Cisco Catalyst 3560 Series Switches
Cisco 1800 Series Integrated Services Routers	Cisco Catalyst 3750 Series Switches
Cisco 2500 Series Routers	Cisco Catalyst 4000 Series Switches
Cisco 2600 Series Multiservice Platform Routers	Cisco Catalyst 4500 Series Switches
Cisco 2800 Series Integrated Services Routers	Cisco Catalyst 5000 Series Switches
Cisco 3600 Series Multiservice Platform Routers	Cisco Catalyst 6500 Series (CatOS) Switches
Cisco 3700 Series Multiservice Access Routers	Cisco ME 6500 Series Ethernet Switches (6524)
Cisco 3800 Series Integrated Services Routers	Cisco Service Control Engines
Cisco 4700 Series Routers	
Access Servers Gateways, Security Appliances, and Generic Devices	
Cisco Access Server 5800 Series	
Cisco AS5300 Series Universal Gateways	

8 Appendix B

Specifying IP Addresses for which SNMP Trap and Syslog Events

On many occasions, SNMP syslog's are generated with source IP address other than the management IP address. In this case, the IP address has to be added in the "Events" tab while adding the VNE to the Server, so that Cisco Prime Network associates the events to the appropriate VNE

8.1.1.1 Reduced VNE Polling support for Nexus 7000

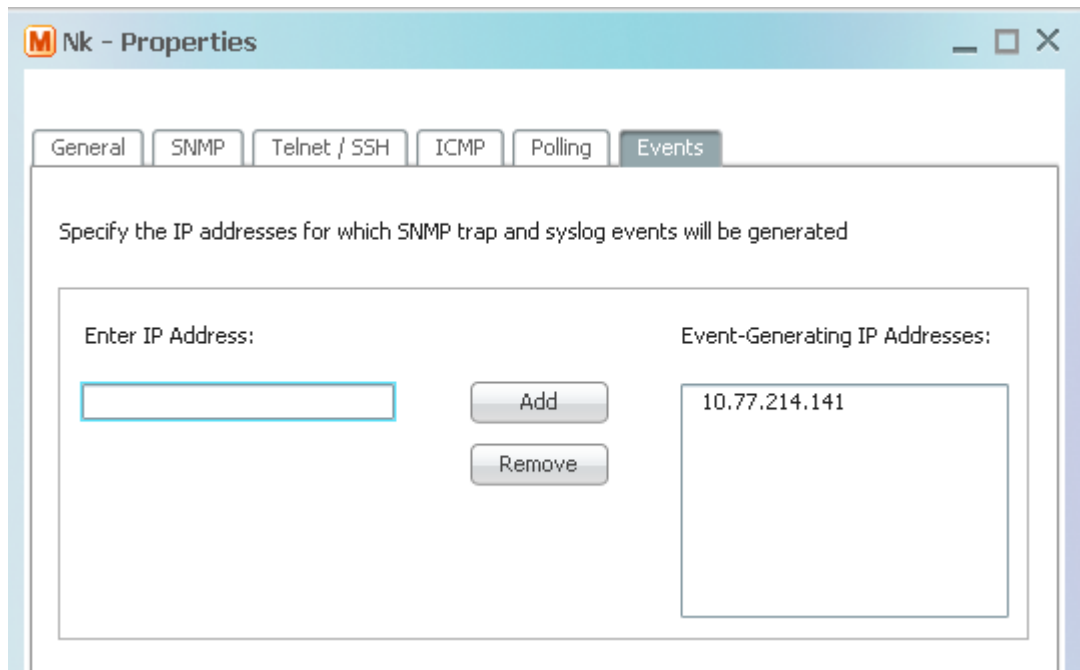
Configuration Tasks for Nexus 7000 reduced polling VNE Creation

- Choose "Reduced Polling (event-based)* " in "Polling Method" pane under "Polling Tab" of the VNE Creation window
- All VDC should be configured with Cisco Prime Network Management server IP address.
- Every VDC in Nexus 7K should be configured with a management ip for EVNE to work.

Example:

```
interface mgmt0
  ip address 10.1.1.1/26
```

- The Cisco Prime Network Management IP address of each VDC should be added in the Event-Generating IP addresses box which appears in the "Events" Tab of the VNE Creation window



- Logging should be enabled on Nexus 7000 (default vdc as well as non-default vdc's) and add the IP address of Cisco Prime Network Server as logging server host.

Nexus7K(config)# logging server <Cisco Prime Network server IP address> 5 use-vrf <Cisco Prime Network Management VRF>

Note: All the above steps are mandatory for events (Syslog/Trap) to work for Nexus 7k. This is applicable for "Regular Polling" also.

8.1.1.2 Support for ACE Card (7600) Events

Add the source IP address of the event generated from ACE card residing on the 7600 chassis as mentioned in Sec 8.1.1.1

9 Appendix C

Configuration Task for ASR 5000/5500 VNE Modeling

Starting from StarOS 14.0, following mibs have been disabled by default in the device.

- ENTITY-MIB
- IF-MIB
- ENTITY-STATE-MIB
- CISCO-ENTITY-FRU-CONTROL-MIB

They need to be enabled for the ASR5k/5500 VNE to model using following configuration in the device.

- configure
- snmp mib ENTITY-MIB
- snmp mib IF-MIB
- snmp mib ENTITY-STATE-MIB
- snmp mib CISCO-ENTITY-FRU-CONTROL-MIB

To verify if above mibs are enabled by using below given command

show snmp server

10 Appendix D

Configuration Task for UCS VNE Modeling

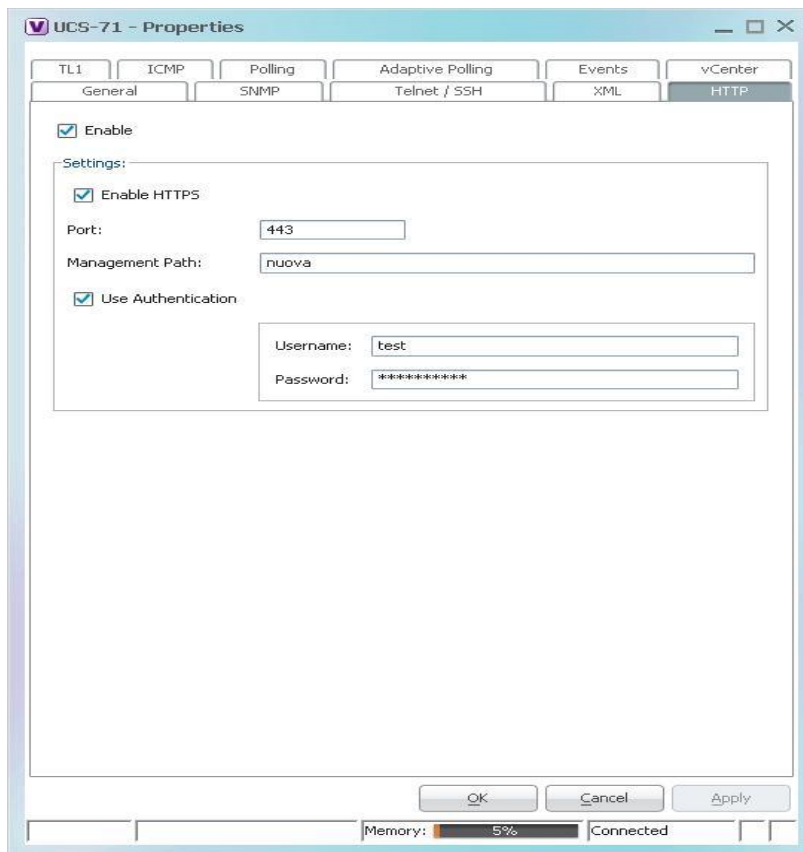
UCS uses the following protocols for modeling Physical & Logical Inventory:-

SNMP, Telnet/SSH, HTTP.

While adding UCS VNE besides providing SNMP & Telnet/SSH credentials like any other VNE user should give HTTP/HTTPS credentials also

Procedure for adding HTTP/HTTPS credentials in Prime Network Administrator:-

While adding VNE after providing General, SNMP & Telnet/SSH credentials. Go to HTTP tab as shown in the picture below.



- Enable HTTP if HTTP is configured in UCS.
- Enable HTTPS also if HTTPS is configured in UCS.
- Provide Management Path. E.g. nuova.
- Provide HTTP credentials (Username & Password) by enabling "Use Authentication".

11 Appendix E

Configuration Task for ASR 901 for seeing the Soft Property

Below steps need to be done for seeing the soft property in GUI

- After installing PrimeNetwork-3.8.xTo3.9.x-DP1209 in the server, run the command `./clientregpacker.sh` from the location `"$ANAHOME$/Main/scripts"`
- Restart the client.

12 Appendix F

Configuration Task for 7600 for Modeling only iBGP Routes

The following procedure needs to be done to filter eBGP routes and model only iBGP routes on 76xx in Prime Network

- 1) Go to `$ANAHOME/Main`
- 2) Run the following regtool command,
 - `./runRegTool.sh -gs localhost add 0.0.0.0 "site/cisco-router-repository/vrf-table-ibgp-telnet/instrumentation services/command"`
 - `./runRegTool.sh -gs localhost set 0.0.0.0 "site/cisco-router-repository/vrf-table-ibgp-telnet"/default cisco-router-repository/vrf-table-telnet`
 - `./runRegTool.sh -gs localhost set 0.0.0.0 "site/cisco-router-repository/vrf-table-ibgp-telnet/instrumentation services/command"/parseutility com.sheer.metrocentral.vendor.cisco2.router.command.parsers.CiscoRouterVrfTableIbgpParser`
- 3) Restart avm

The following procedure needs to be done to rollback to default behavior in Prime Network,

- 1) Go to `$ANAHOME/Main`
- 2) Run the following regtool command,
 - `/runRegTool.sh -gs localhost remove 0.0.0.0 "site/cisco-router-repository"`
- 3) Restart avm

13 Appendix G

Configuration Task for ASR 9000 for Modeling only iBGP Routes

The following procedure needs to be done to filter eBGP routes and model only iBGP routes on asr9k in Prime Network

- 1) Go to `$ANAHOME$/Main` and run
- 2) Run the following regtool command,

- `./runRegTool.sh -gs localhost add 0.0.0.0 "site/cisco-opt-xr-router-iox-repository/vrf-table-ibgp-telnet/instrumentation services/command"`
- `./runRegTool.sh -gs localhost set 0.0.0.0 "site/cisco-opt-xr-router-iox-repository/vrf-table-ibgp-telnet"/default cisco-opt-xr-router-iox-repository/crs1-vrf-table-telnet`
- `./runRegTool.sh -gs localhost set 0.0.0.0 "site/cisco-opt-xr-router-iox-repository/vrf-table-ibgp-telnet/instrumentation services/command"/parseutility
com.sheer.metrocentral.vendor.cisco2.router.command.parsers.CiscoRouterVrfTableIbgpParser`

3) Restart the avm

The following procedure needs to be done to rollback to default behavior in Prime Network,

- 1) Go to `$ANAHOME$`/Main and run
- 2) Run the following regtool command,
 - `./runRegTool.sh -gs localhost remove 0.0.0.0 "site/cisco-opt-xr-router-iox-repository"`
- 3) Restart the AVM.