

## Advanced Services' Education Virtual Live Classroom Delivery Format



How would you like to take a Cisco® Advanced Services Education (ASE) course in the convenience of your home or office and save on travel costs? Now you can, because Cisco ASE now offers selected courses in a *Virtual Live Classroom* delivery format.

A virtual live classroom-delivered course is exactly what it sounds like: rather than flying to the classroom location, we bring the classroom to you through your personal computer. In this new world of virtual live classrooms, the Cisco ASE virtual live classroom format includes the same technically detailed content that is delivered by the same technically knowledgeable instructors and still allows you to participate in the same lab exercises.

**Figure 1.** Welcome to the Virtual Live Classroom



Special care has been taken to make sure that you have the same level of interaction and participation in the virtual live classroom as you do in a traditional classroom. All ASE instructors have successfully participated in specialized training to make sure that student interaction and comprehension are not lost in this new virtual live classroom format.

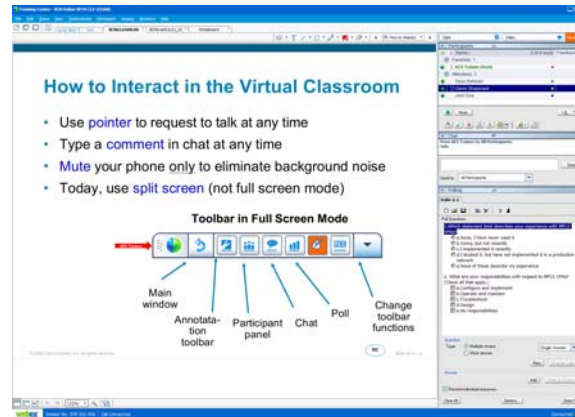
During delivery, you are asked questions and are encouraged to send responses or participate in other online tasks approximately every 10 minutes. This helps ensure that

you are keeping up with the lecture and helps the instructors track how you are doing.

With the virtual live classroom, you have several ways of communicating with the instructor and other students. These include:

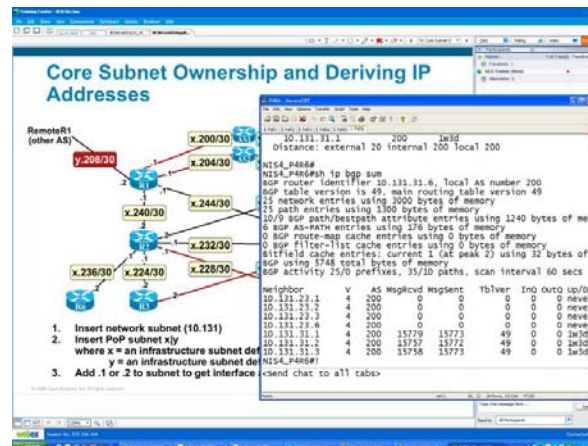
- Audio: You can ask questions by phone.
- Online: The Cisco WebEx™ desktop provides a chat board for you to use. You can type a question or comment and send it to the instructor, a student, or the entire class.

**Figure 2.** WebEx Student Interface used in Virtual Live Classroom



For lab exercises, you access the lab gear in the same way as you do in our instructor-led offerings. You use a secure terminal emulator application and log in. You can be logged into the Cisco WebEx® session while also working on your labs, thus allowing you to get instructor support as you work through the lab exercises.

**Figure 3.** Student Experience with Lecture and Lab



The virtual live classroom environment requires students to remain at their virtual live classroom desk for the duration of the sessions. As a result, Cisco ASE has shortened the length of each virtual live classroom day and when necessary, extended the number of days for a course delivery. For example, the traditional classroom version of the AS Building Core Networks with OSPF, ISIS, BGP, and MPLS course is delivered in seven to eight hours a day over five days. The virtual live classroom delivery is four hours a day over eight days. Class start and end times will vary because they are scheduled to accommodate students in various time zones.

### **Course Logistics**

As you might expect, some attendance logistics change with the virtual live classroom format. After your attendance is confirmed, you will receive the following communications:

- A confirmation email describing the preparation steps a student needs to take prior to course attendance
- An email that provides your login instructions on how to get into the virtual live classroom
- An email that provides you instructions on how to access and print your student materials

### **Technical Setup Requirements**

As part of your preparation for a course, your virtual live classroom desktop should meet specific requirements. Details on the requirements for your PC can be found at <http://support.webex.com/support/system-requirements.html>. Following are the requirements for a PC setup:

- Hardware:
  - PC (check Cisco WebEx for recommendations)
  - Telephone connection
  - High-speed Internet access such as DSL or cable
- PC system:
  - Windows 98, 2000, XP, 2003, or Vista
  - Web browser such as Internet Explorer 6/7, Firefox 2/3, Mozilla 1.7 or higher, or Netscape 8.1 or higher (Vista supports Internet Explorer 7 and Firefox 2/3 browsers only)
  - JavaScript and cookies need to be enabled
  - ActiveX enabled for Internet Explorer (recommended)
  - Secure Shell (SSH)-capable terminal emulator

## Registration Information

For more information about schedules and registration for this course, contact [aeskt\\_registration@cisco.com](mailto:aeskt_registration@cisco.com).

## For More Information

For more information about Advanced Services Education course offerings, including custom training options, as well as Advanced Services Curriculum Planning Services and the Advanced Services Technical Knowledge Library (TKL), go to [www.cisco.com/go/ase](http://www.cisco.com/go/ase).



**Americas Headquarters**  
Cisco Systems, Inc.  
San Jose, CA

**Asia Pacific Headquarters**  
Cisco Systems (USA) Pte. Ltd.  
Singapore

**Europe Headquarters**  
Cisco Systems International BV  
Amsterdam, The Netherlands

Cisco has more than 200 offices worldwide. Addresses, phone numbers, and fax numbers are listed on the Cisco Website at [www.cisco.com/go/offices](http://www.cisco.com/go/offices).

CCDE, CCENT, Cisco Eos, Cisco StadiumVision, the Cisco logo, DCE, and Welcome to the Human Network are trademarks; Changing the Way We Work, Live, Play, and Learn is a service mark; and Access Registrar, Aironet, AsyncOS, Bringing the Meeting To You, Catalyst, CCDA, CCDP, CCIE, CCIP, CCNA, CCNP, CCSP, CCVP, Cisco, the Cisco Certified Internetwork Expert logo, Cisco IOS, Cisco Press, Cisco Systems, Cisco Systems Capital, the Cisco Systems logo, Cisco Unity, Collaboration Without Limitation, Enterprise/Solver, EtherChannel, EtherFast, EtherSwitch, Event Center, Fast Step, Follow Me Browsing, FormShare, GigaDrive, HomeLink, Internet Quotient, IOS, iPhone, IQ Expertise, the IQ logo, IQ Net Readiness Scorecard, iQuick Study, IronPort, the IronPort logo, LightStream, Linksys, MediaTone, MeetingPlace, MGX, Networkers, Networking Academy, Network Registrar, PCNow, PIX, PowerPanels, ProConnect, ScriptShare, SenderBase, SMARTnet, Spectrum Expert, StackWise, The Fastest Way to Increase Your Internet Quotient, TransPath, WebEx, and the WebEx logo are registered trademarks of Cisco Systems, Inc. and/or its affiliates in the United States and certain other countries.

All other trademarks mentioned in this document or Website are the property of their respective owners. The use of the word partner does not imply a partnership relationship between Cisco and any other company. (0803R)