



Cisco Tidal Enterprise Scheduler – Dynamic Resource Management as a Part of Enterprise Business Process Orchestration

Bobby Siu – Product Management

Cisco Tidal Enterprise Scheduler

- What

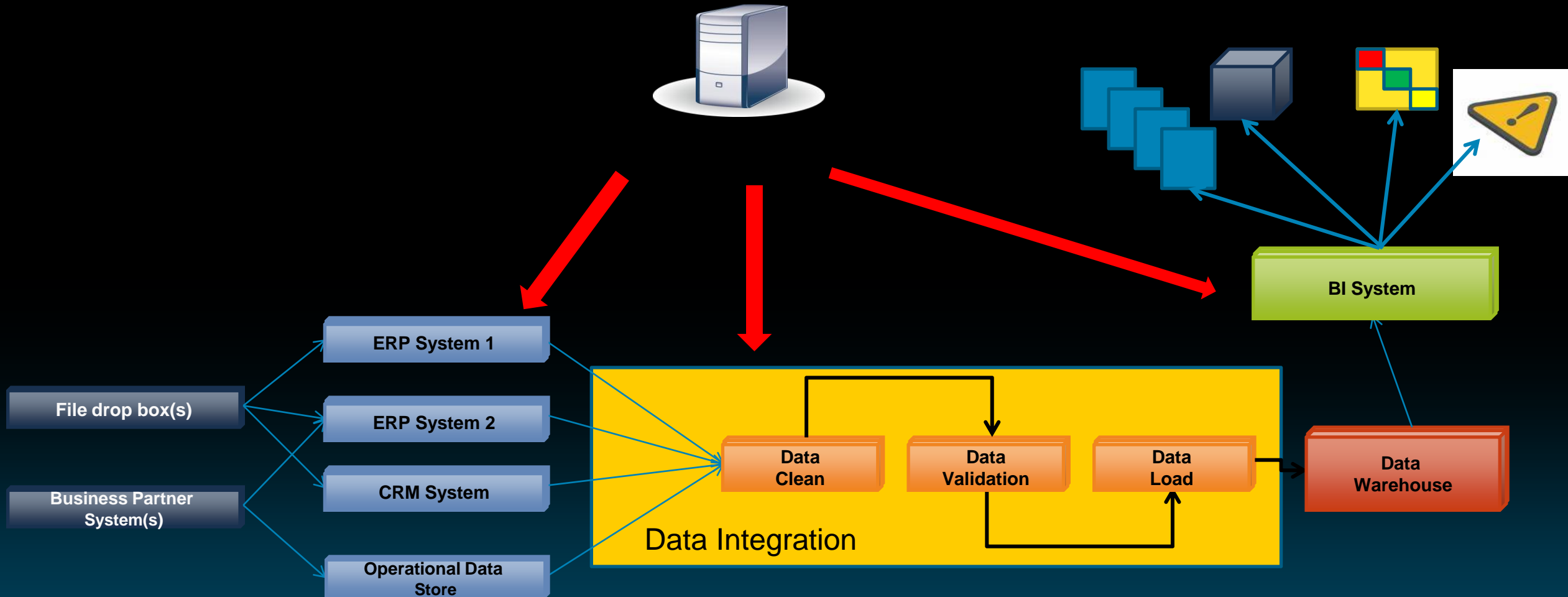
Enterprise Business Process Orchestration – The ability to integrate and automate the execution of heterogeneous business processes such that they execute at the right time with the correct prerequisites and with automated recovery

- Why

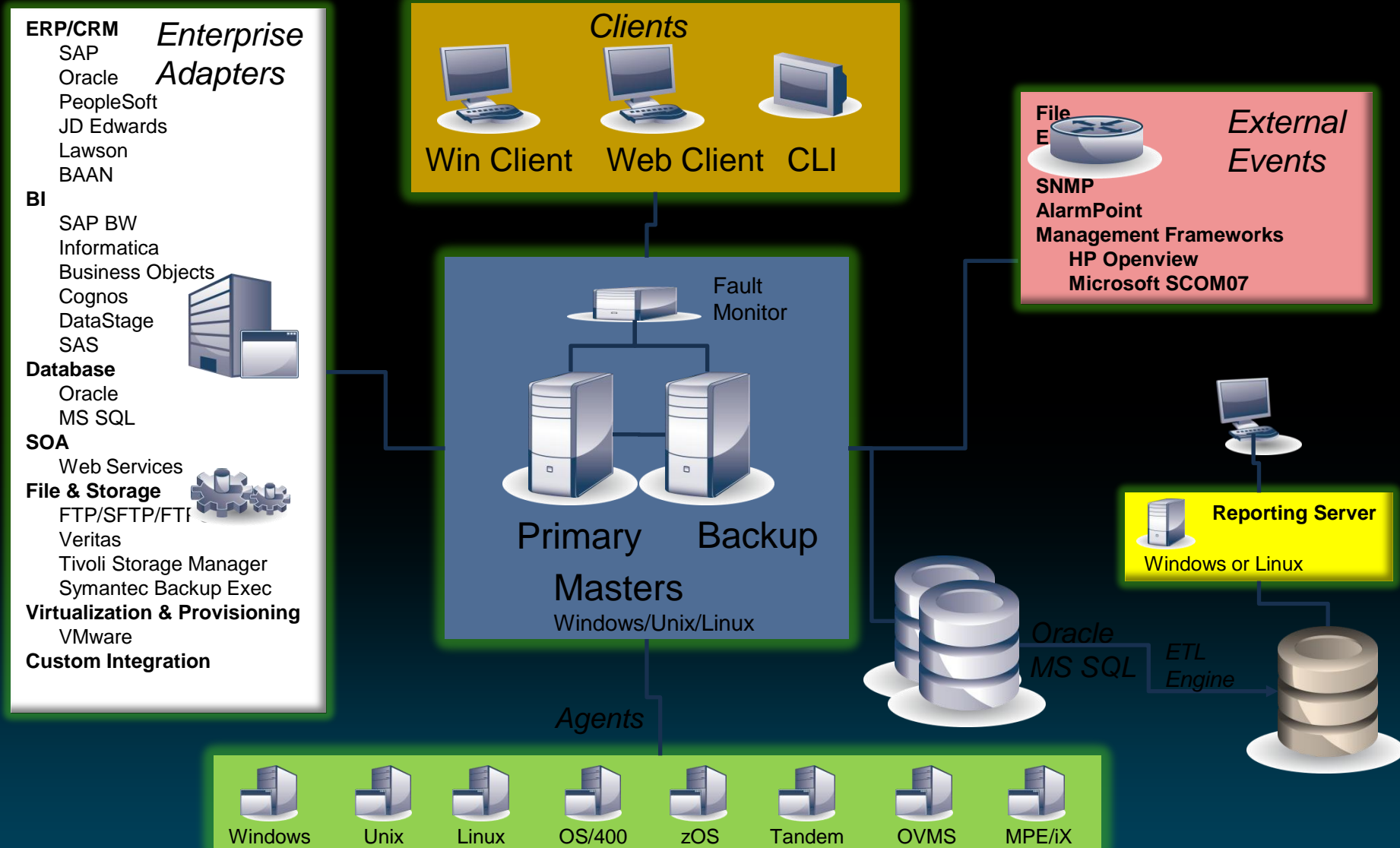
Enterprise business processes are complex and can easily span multiple solution stacks that span different systems, servers, applications and partner & vendor boundaries and include virtual & physical components

Lack of centralization and automation will place the burden on IT to attempt to manage the complex process. Embedded or OS scheduler do not solve the problem.

Business Intelligence Example



Architecture



Tidal with VMware → Efficiencies

- Dynamic Resourcing

 - Adopt a just in time dynamic resourcing model for greater efficiencies
 - Just-in-time versus Just-in-case

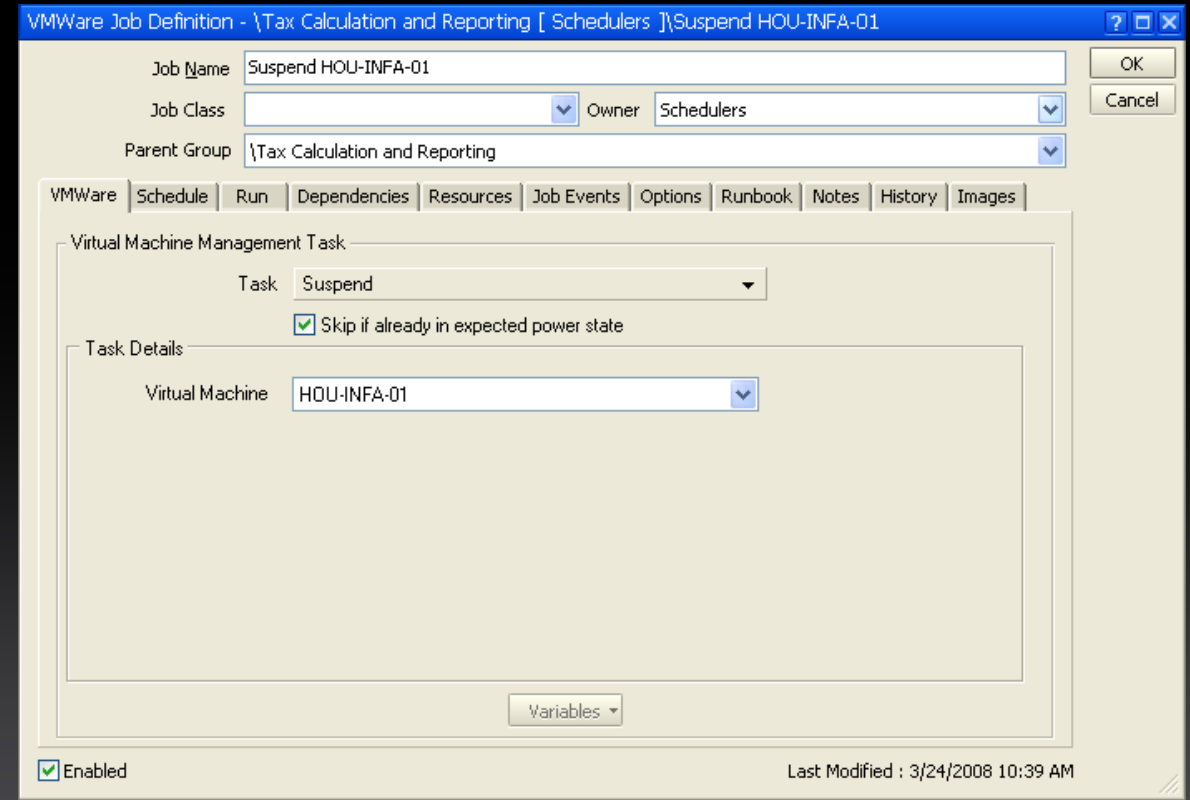
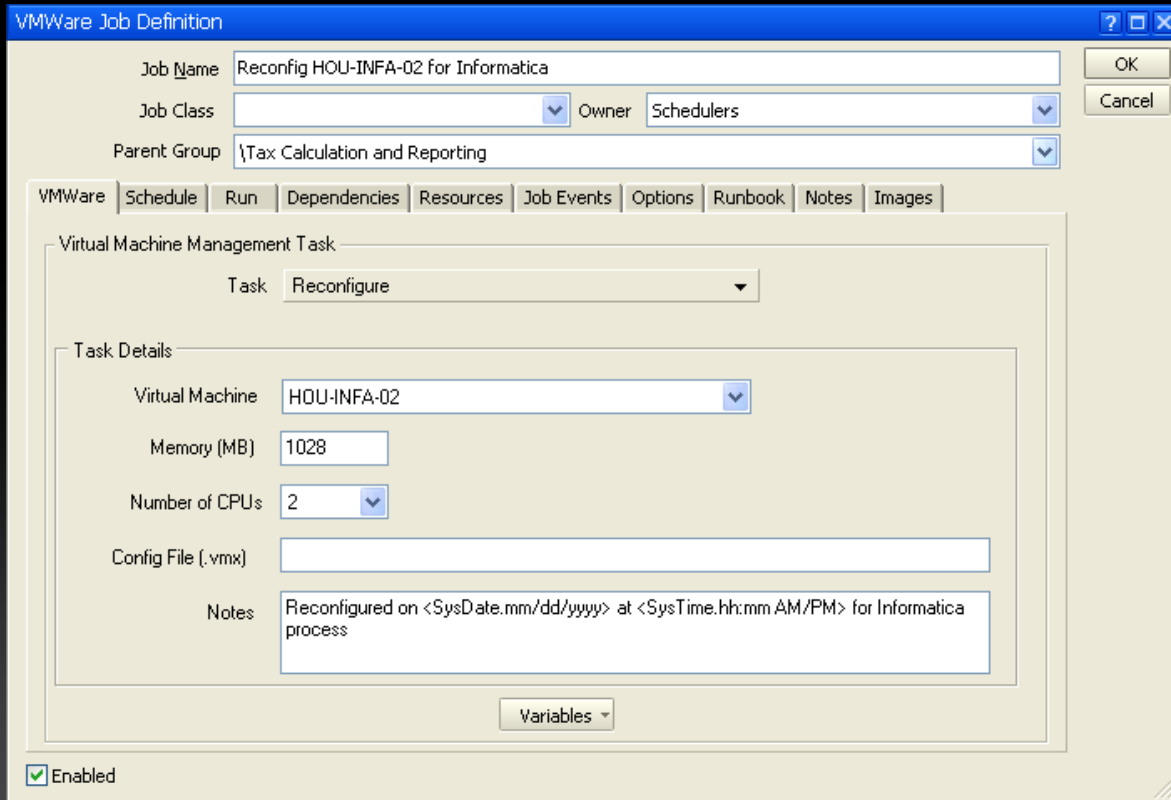
- How

 - Utilize Cisco Tidal Enterprise Scheduler with the VMware adapter to achieve dynamic resourcing to complete processes with “just enough” resources

 - Capabilities:

 - Power up VMs only when needed
 - Suspend / Power down VMs to conserve resources
 - Migrate VMs as needed
 - Adjust system resource allocation when needed
 - Snapshot maintenance
 - Trigger activities when VM performance/resources are available

VMware Job Defined



VMware Integration

VMWare Event Definition (Edit Mode)

Event Name: Any Power State Change

Owner: Schedulers

VMWare Monitor | Schedule | Associated Action(s) | Description | Trigger History

Monitor

VMWare Connection: VM - HOU-ESX-01 (VMWare)

VMWare Event: Power State Change

ESX Host: HOU-ESX-01.tidalsoft.local

Virtual Machine: HOU-INFA-01

Power State: Powered On

- Powered On
- Tools Running
- Powered Off
- Suspended
- Any State Change

Check Trigger On Connect

Public Enabled

VMWare Event Definition (Edit Mode)

Event Name: CPU Usage High

Owner: Schedulers

VMWare Monitor | Schedule | Associated Action(s) | Description | Trigger History

Monitor

VMWare Connection: VC - hou-fs-00 (VMWare)

VMWare Event: Performance Alarm - Guest

ESX Host: *

Virtual Machine: HOU-INFA-02

Performance Counter: CPU Usage (Average)

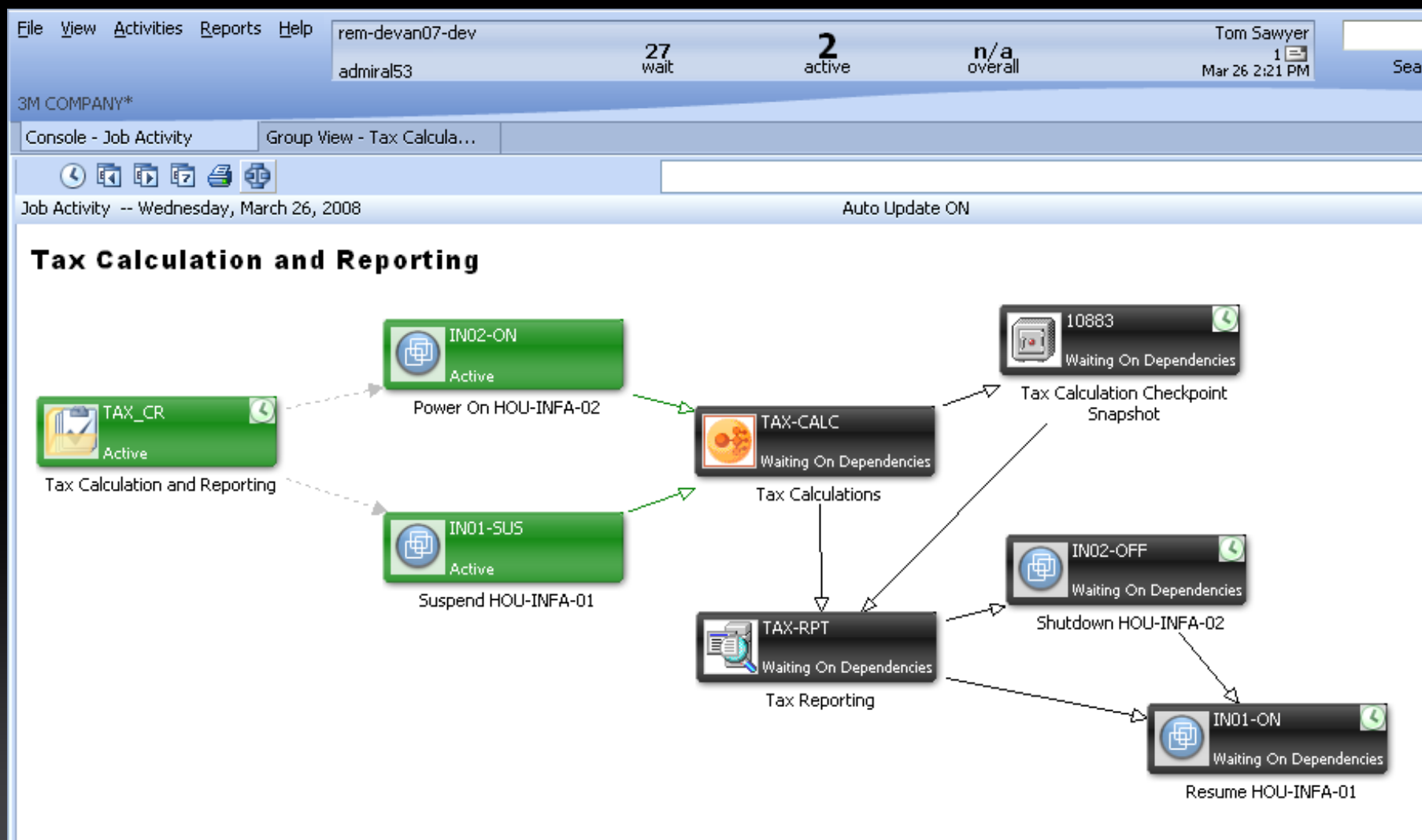
Trigger: Average Greater Than 90 Percent

CPU: CPU usage as a percentage over the collected interval

Check Trigger On Connect

Public Enabled

VMware Integration





CISCO