



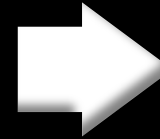
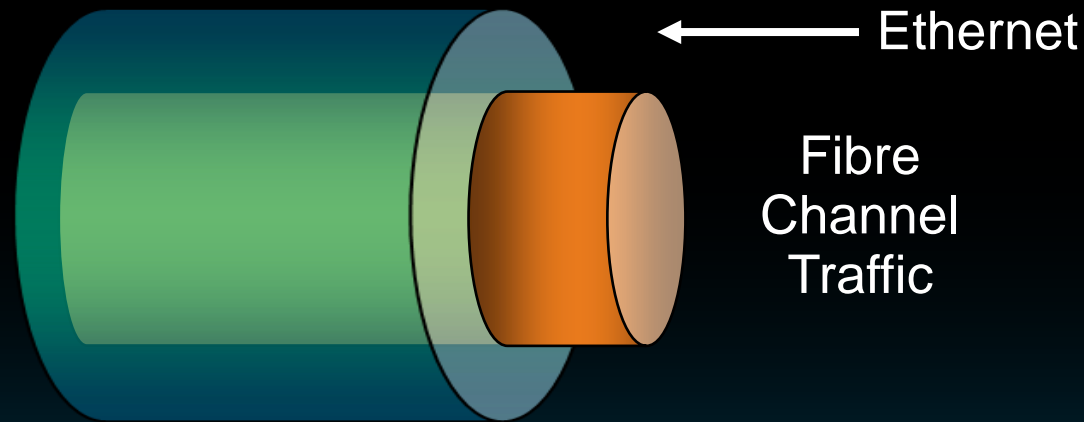
Fibre Channel over Ethernet

Haseeb Niazi – Solutions Architect

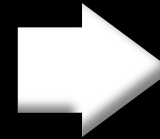
FCoE integrates with today's Fibre Channel SANs

FCoE

Mapping of FC Frames over Ethernet



Completely based on the FC model



Same host-to-switch and switch-to-switch behavior as FC

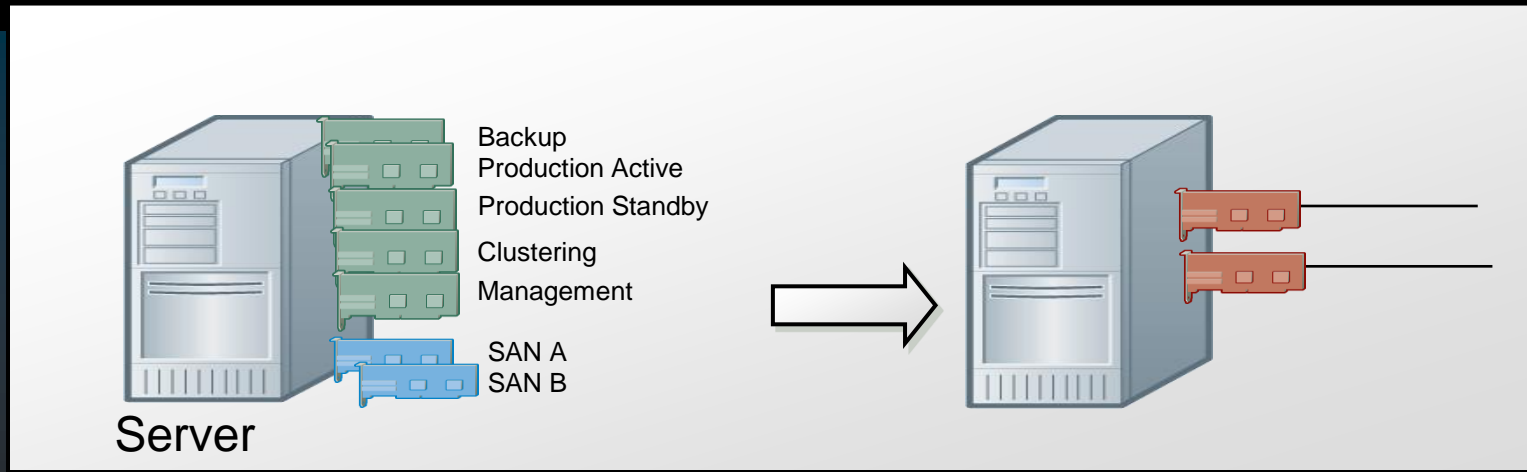


WWNs, FC-IDs, hard/soft zoning, DNS, RSCN



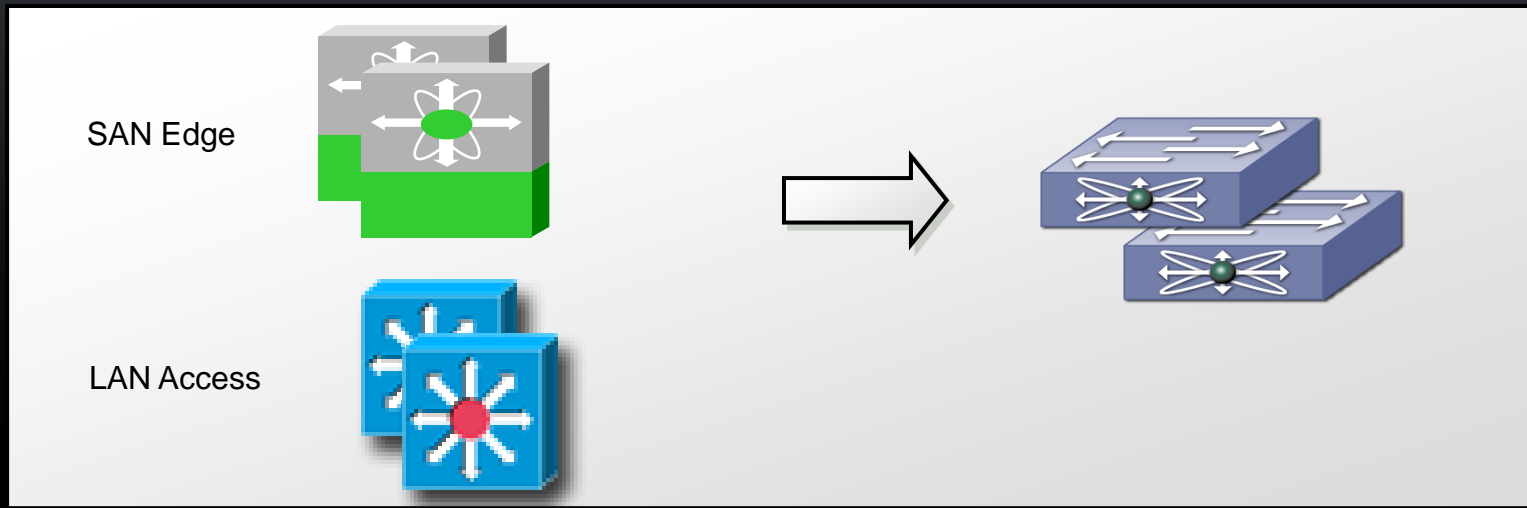
FCoE enables Unified Fabric

Enables shared LAN and SAN links for access layer TCO benefits



Consolidate I/O

- Eliminate adapter and switch ports
- Eliminate cables
- Avoid air dams
- Reduce cable maintenance
- Reduce power



Standardize I/O

- Faster server deployment
- Enhance server consolidation
- Enhance storage consolidation

Cisco Portfolio of Unified Fabric Products



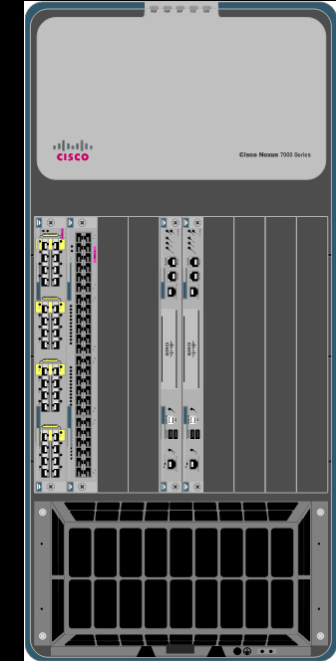
Nexus 5000

10GE LAN
First product to deliver FCoE
First available June 2008
Integrates with existing FC SANs



Nexus 2000

Remote line cards for Nexus 5000
Cost-effective 1GE and 10GE
10GE Nexus 2232 supports FCoE



Nexus 7000

FCoE support in upcoming 5.1 release
N7K-F132XP-15 DCB module, w/ FCoE, - 230Gb backplane



Nexus 4000

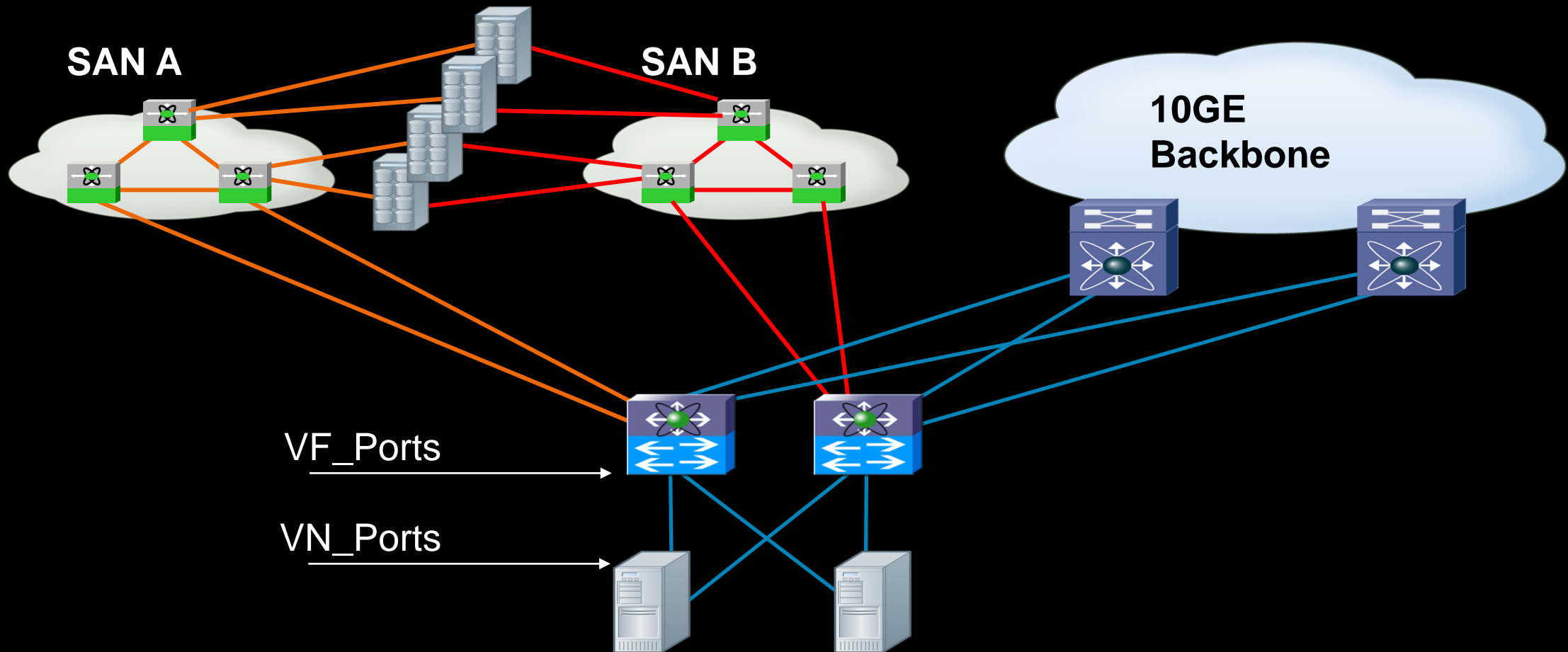
Blade server switch for Blade Center
FCoE pass-through with security



Unified Computing System

Server incorporates FCoE in I/O subsystem

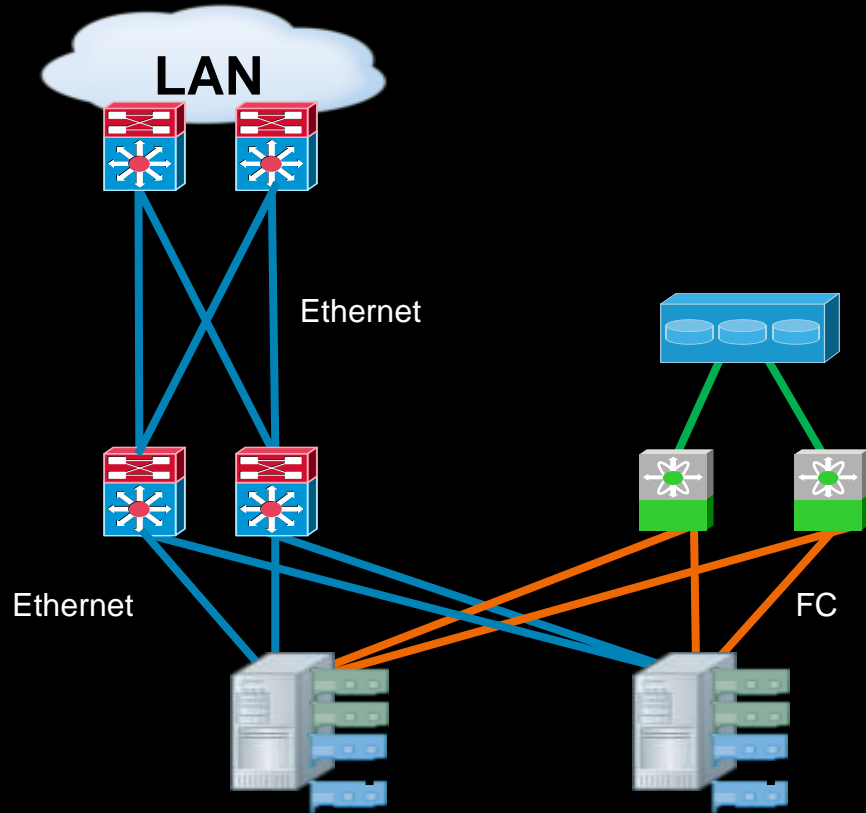
FCoE: Access Consolidation



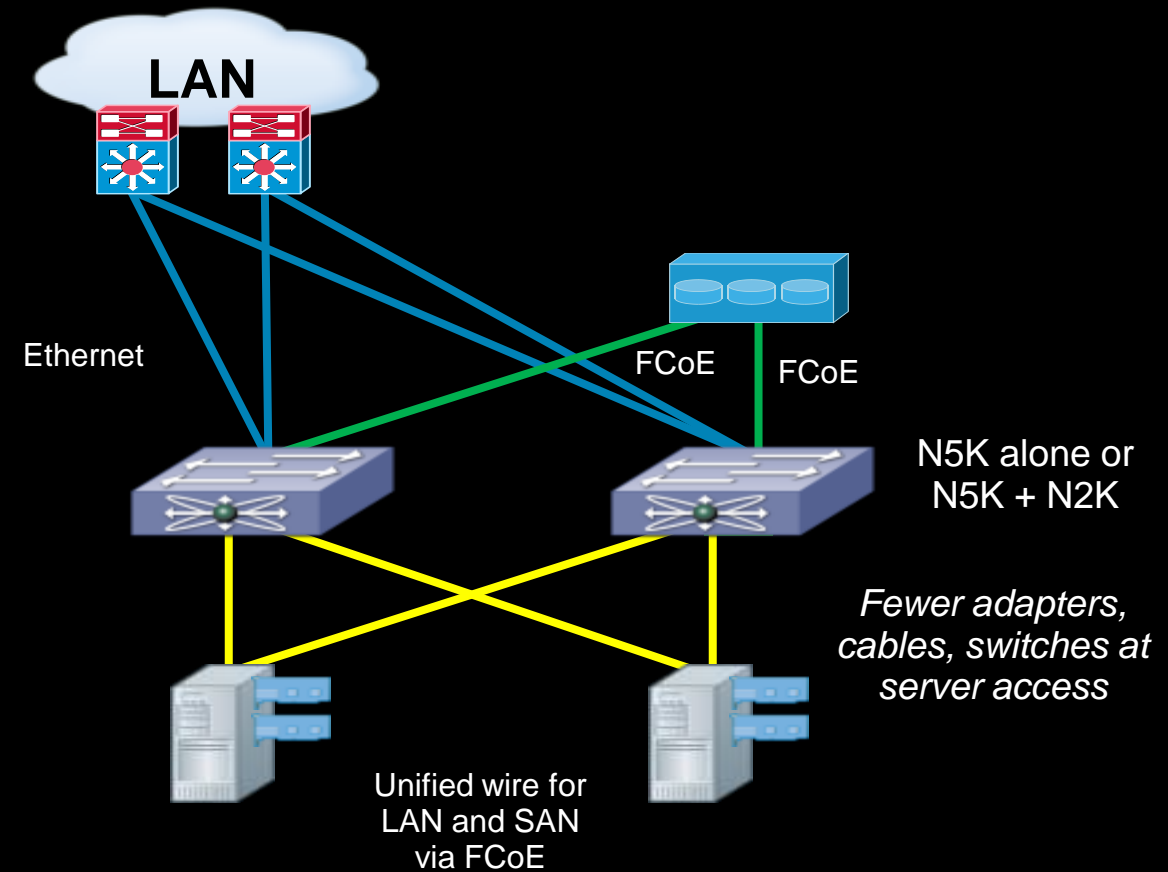
SAN with FCoE Storage

- Ethernet LAN Only
- Native Fibre Channel
- Unified Wire with LAN and SAN
- FCoE SAN Only

Traditional Network



Unified Fabric, FCoE to Targets

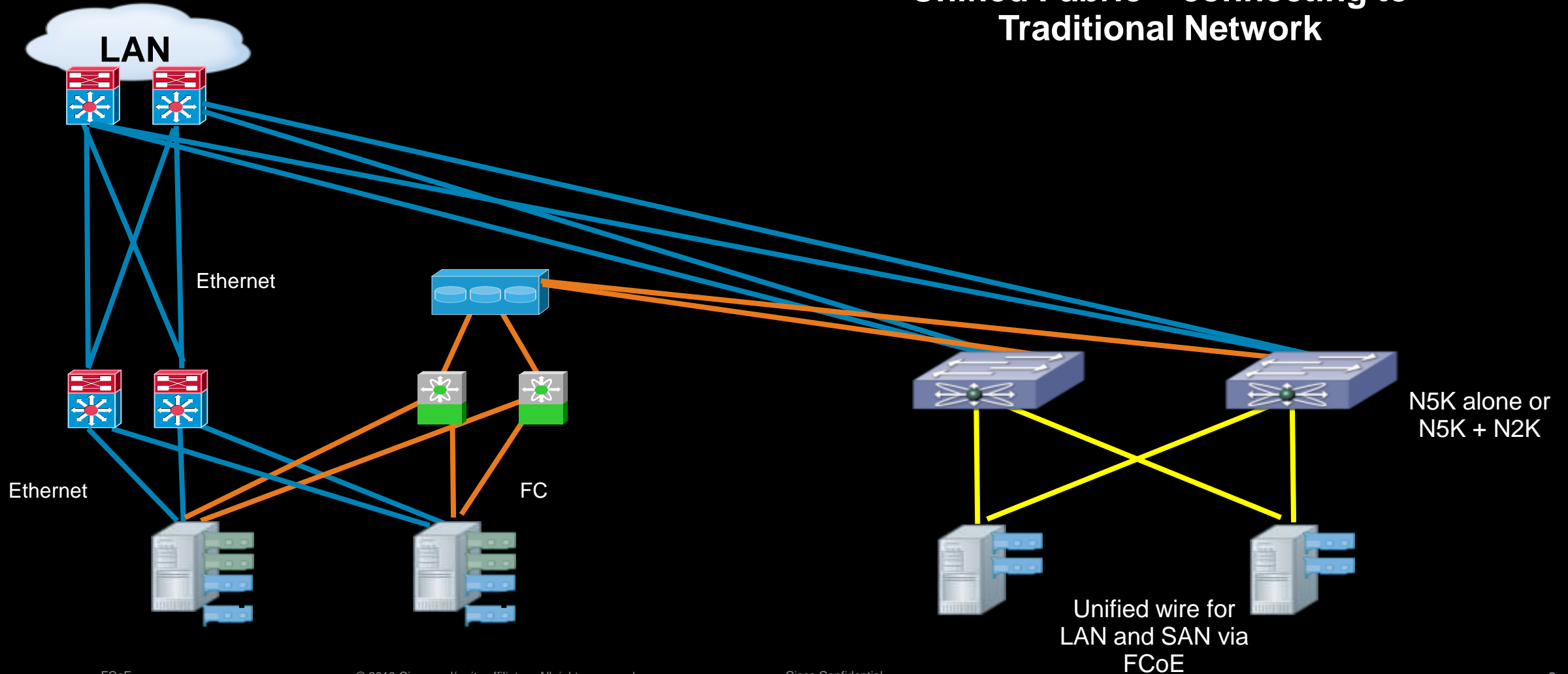


FCoE – Protecting Investment

- Ethernet LAN Only
- Native Fibre Channel
- Unified Wire with LAN and SAN

Traditional Network

Unified Fabric – connecting to Traditional Network



Why FCoE - Recap

FCoE integrates with today's Fibre Channel SANs

FCoE is based on Ethernet

Leverages Ethernet technology, investment, market presence

FCoE enables Unified Fabric

Enables shared LAN and SAN links for access layer TCO benefits

FCoE enables FC to become more accessible

FCoE going on motherboards = less cost and complexity vs. FC NICs

O/S vendors will adopt with native FCoE stacks. – less cost and complexity



CISCO