



Metro Ethernet Service

How Cisco Deployed a High-Speed WAN



A Cisco on Cisco Case Study: Inside Cisco IT

Overview



- **Challenge:**
 - Serve growing Internet traffic at Cisco's headquarters campus
- **Solution:**
 - Metro Ethernet circuit from AT&T and Cisco 12404 Router
- **Results**
 - Higher capacity at a comparable cost with easier ability to add bandwidth as needed
- **Next Steps**
 - Deploy Metro Ethernet services and Cisco 12000 Series Routers in other areas

Challenge: Growing Internet Traffic

- Service provider change mandated replacement of OC-3 circuit
- Existing Cisco 7500 Series routers no longer able to serve traffic growth
- Cisco IT needed ability to add bandwidth in small increments
- Objective to increase diversification for Internet access links

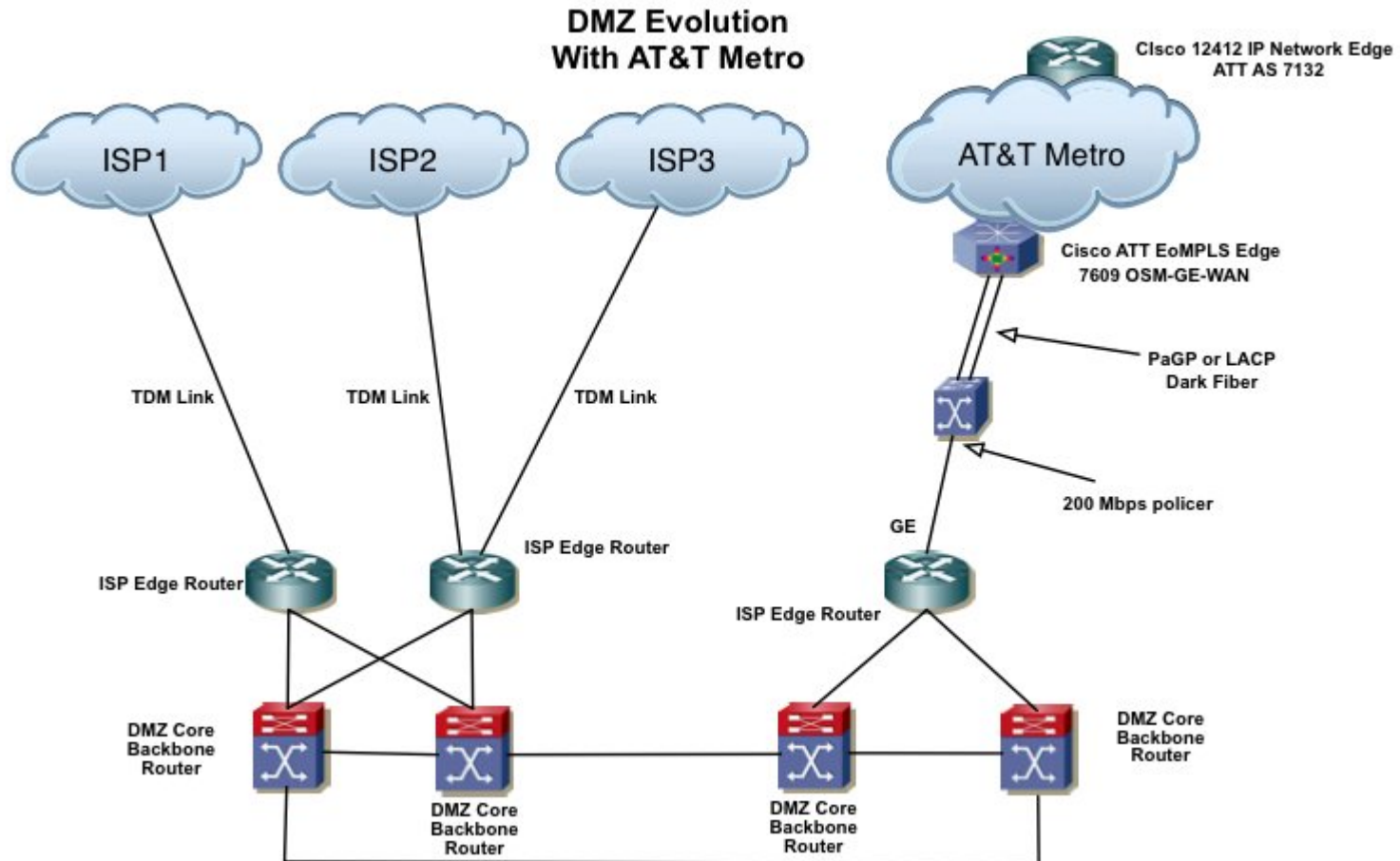


Solution: Metro Ethernet & Cisco 12404 Router

- 200-Mbps Metro Ethernet circuit from AT&T
- Cisco 12404 Router at the network edge
- Two fiber pairs for load balancing and failover
- Traffic shaping and policing features prevent bursts from exceeding circuit capacity

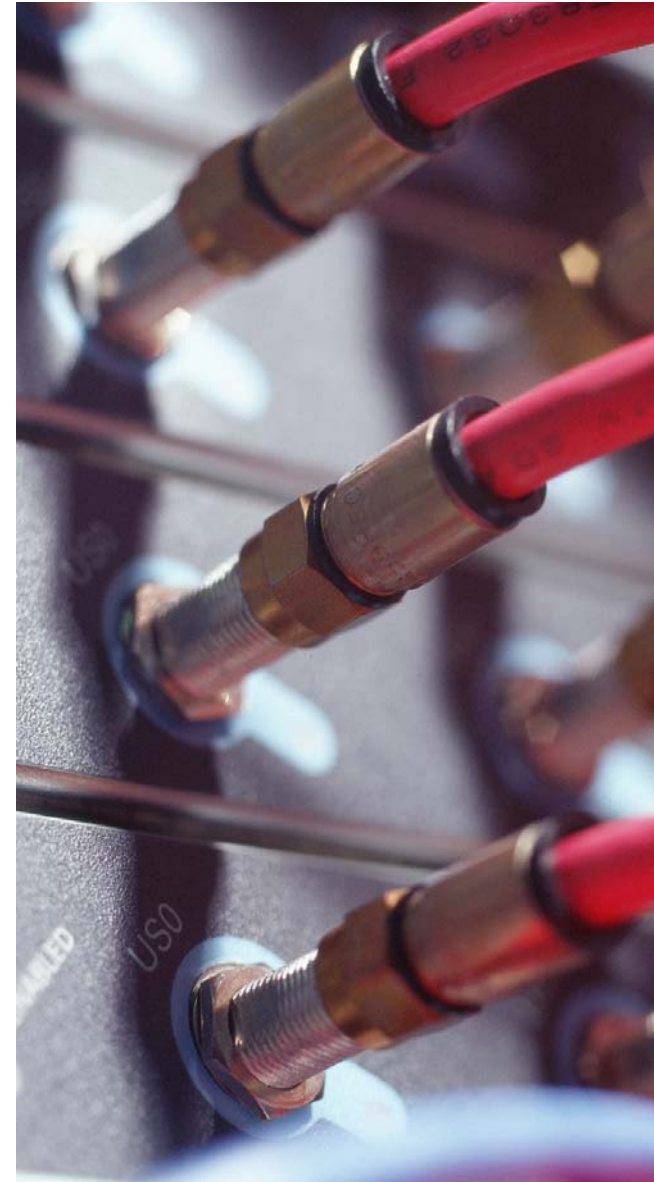


Solution: Metro Ethernet Service



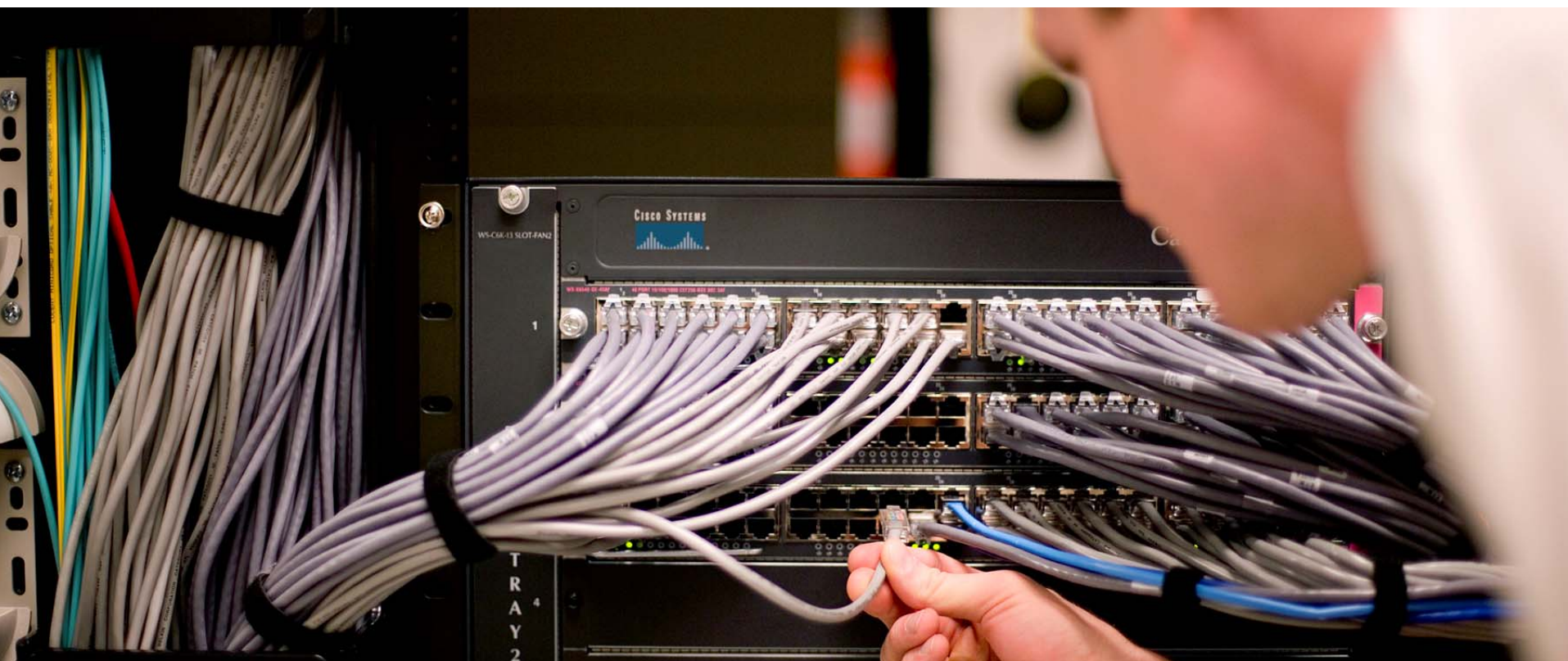
Results: Higher Capacity, Controlled Costs, Easier Upgrades

- Metro Ethernet circuit carries 45% of Internet traffic at Cisco San Jose campus
- 200-Mbps capacity at comparable cost to previous 60-Mbps OC-3 circuit
- Incremental capacity increases for controlled costs
- No additional hardware cost or service disruption during bandwidth upgrades
- Improved capacity and features of Cisco 12404 Router supports network resilience and link diversification



Next Steps: Deployment in New Areas

- Cisco 12000 Series Routers implemented in Cisco IT's major Internet access hubs worldwide
- Metro Ethernet service is the replacement choice for OC-3 circuits that have reached capacity



To read the entire case study, or for additional Cisco IT case studies on a variety of business solutions, visit Cisco on Cisco: Inside Cisco IT

www.cisco.com/go/ciscoit



CISCO



Americas Headquarters

Cisco Systems, Inc.
170 West Tasman Drive
San Jose, CA 95134-1706
USA
www.cisco.com
Tel: 408 526-4000
800 553-NETS (6387)
Fax: 408 527-0883


Asia Pacific Headquarters

Cisco Systems, Inc.
168 Robinson Road
#28-01 Capital Tower
Singapore 068912
www.cisco.com
Tel: +65 6317 7777
Fax: +65 6317 7799

Europe Headquarters

Cisco Systems International BV
Haarlerbergpark
Haarlerbergweg 13-19
1101 CH Amsterdam
The Netherlands
www-europe.cisco.com
Tel: +31 0 800 020 0791
Fax: +31 0 20 357 1100

Cisco has more than 200 offices worldwide. Addresses, phone numbers, and fax numbers are listed on the Cisco Website at www.cisco.com/go/offices.

 ©2007 Cisco Systems, Inc. All rights reserved. CCVP, the Cisco logo, and the Cisco Square Bridge logo are trademarks of Cisco Systems, Inc.; Changing the Way We Work, Live, Play, and Learn is a service mark of Cisco Systems, Inc.; and Access Registrar, Aironet, BPX, Catalyst, CCDA, CCDP, CCIE, CCIP, CCNA, CCNP, CCSP, Cisco, the Cisco Certified Internetwork Expert logo, Cisco IOS, Cisco Press, Cisco Systems, Cisco Systems Capital, the Cisco Systems logo, Cisco Unity, Enterprise/Solver, EtherChannel, EtherFast, EtherSwitch, Fast Step, Follow Me Browsing, FormShare, GigaDrive, HomeLink, Internet Quotient, IOS, iPhone, IP/TV, iQ Expertise, the iQ logo, iQ Net Readiness Scorecard, iQuick Study, LightStream, Linksys, MeetingPlace, MGX, Networking Academy, Network Registrar, Packet, PIX, ProConnect, RateMUX, ScriptShare, SlideCast, SMARTnet, StackWise, The Fastest Way to Increase Your Internet Quotient, and TransPath are registered trademarks of Cisco Systems, Inc. and/or its affiliates in the United States and certain other countries.

All other trademarks mentioned in this document or Website are the property of their respective owners. The use of the word partner does not imply a partnership relationship between Cisco and any other company. (0704R)