



Empowered Branch

Collaboration, Intelligence,
Security, Mobility

October 18, 2007



Dave Frampton
VP Product Marketing
ARTG

Inbar Lasser-Raab
Director, Solution Marketing
Network Systems, CMO

21st Century Branches: Taking a Bigger Role

**Interactive
Business**



**Collaboration
Tools**



Branch Growth

**Branch Employees
Growth**

**Video on
Demand**



**Wireless
Mobility**



New Applications

Branch Transformation

Today's Branch



**Aging, Disparate Data/
Voice Networks**



**Saturated WAN,
Poor Response Time**



**Blended Security
Threats, Compliance**



**Limited Mobility, Limited
Disaster Recovery**



**Inconsistent Branches
and Branch-HQ solutions**

Empowered Branch

**Unified Voice/Data/Video
Network Platform**

**Optimized WAN,
Accelerated Applications**

Self Defending Networks

**High Availability, Unified
Wireless—Wireline Business**

**Consistent Branches
and Branch-HQ Services**

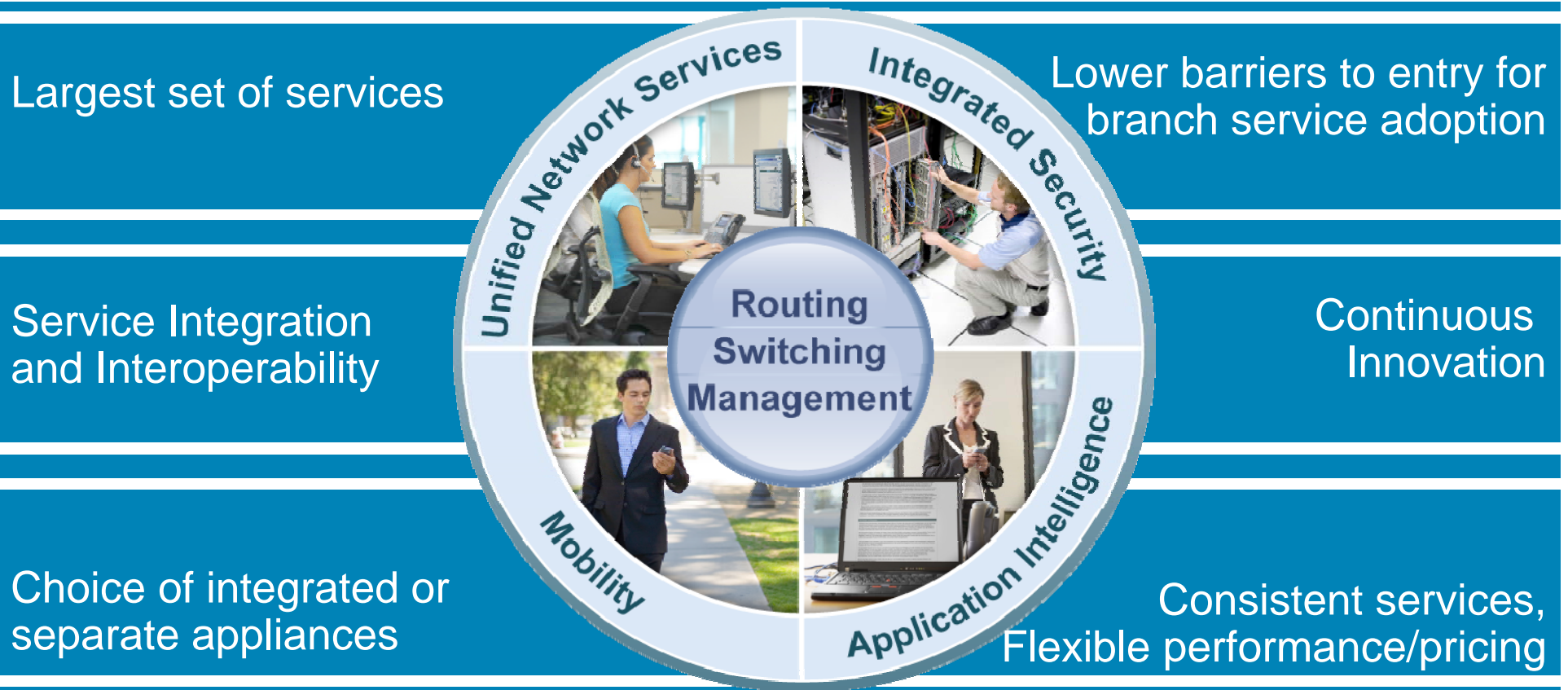
The Network Is the Platform

Cisco Empowered Branch



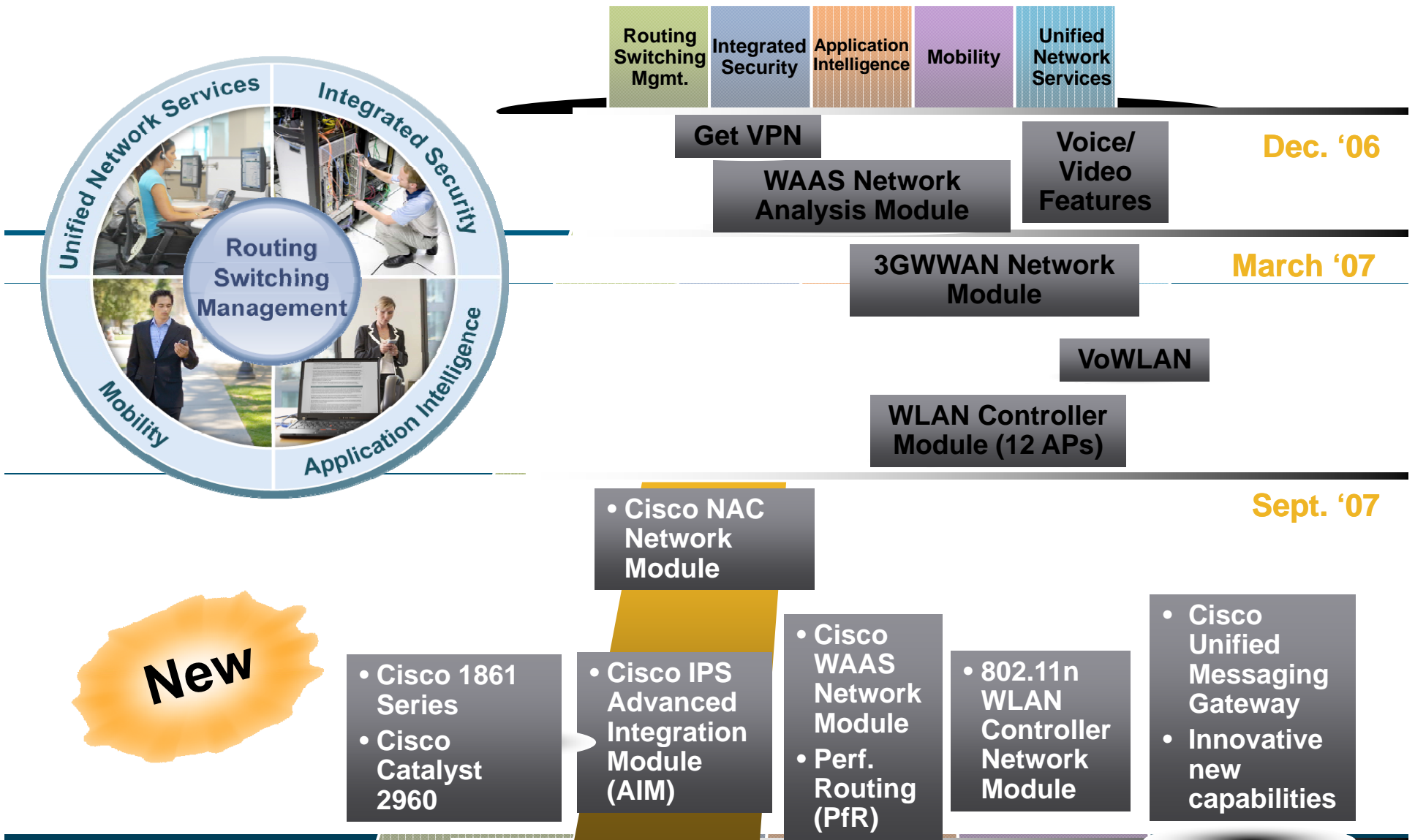
End-to-end portfolio for branch requirements

The Power of the Integrated Network



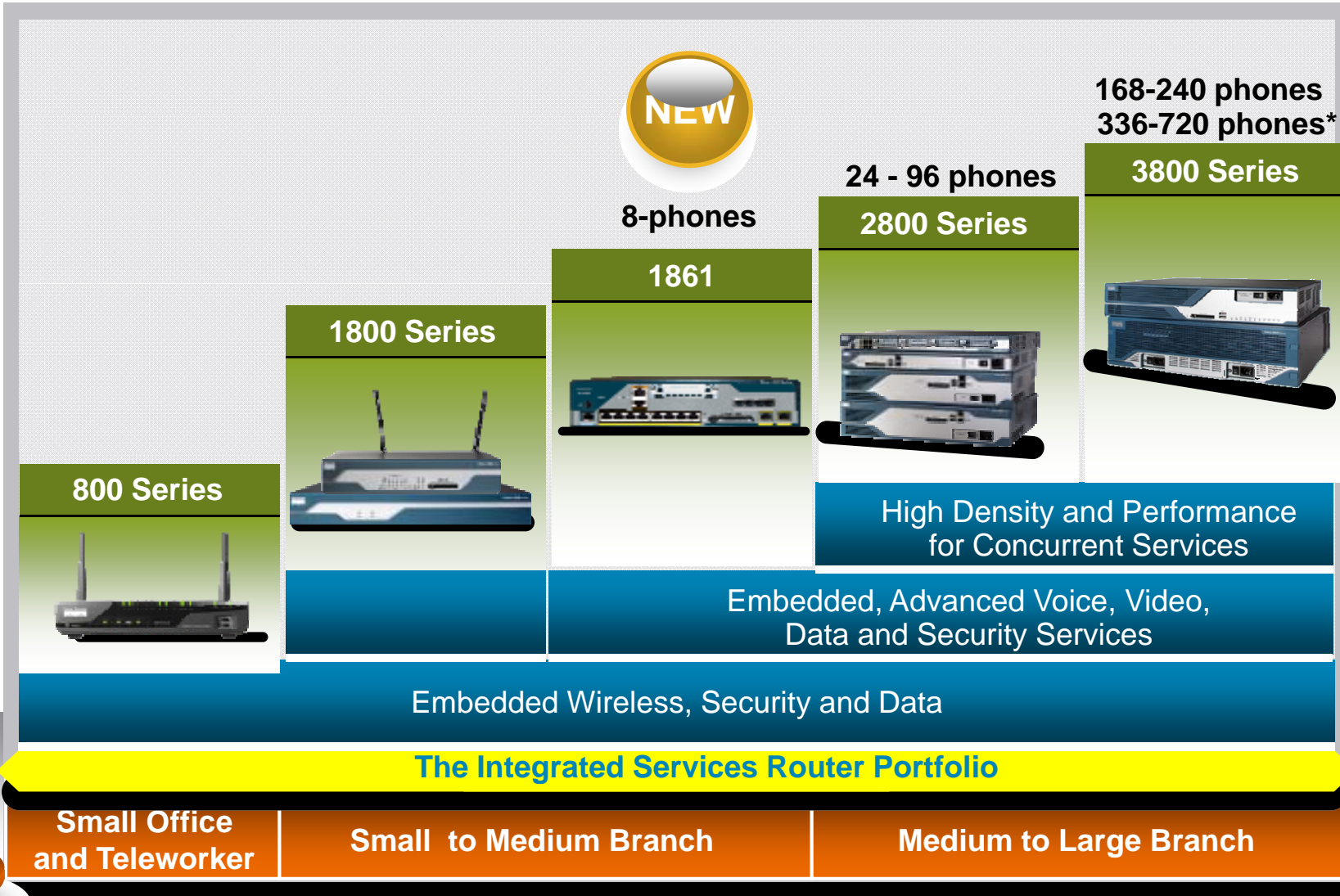
Complete and Integrated Branch Solution

Cisco Empowered Branch



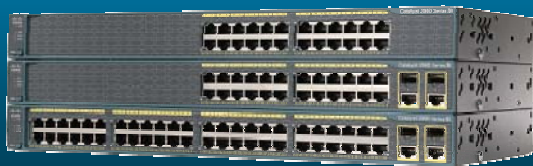
The Cisco ISR Family is Growing

Performance and Services Density



*SRST

Cisco Catalyst 2960 Switches with LAN Lite IOS



Catalyst 2960

- Extends the Catalyst 2960 portfolio
- For entry level customers
- Upgrade path for customers with hubs and unmanaged switches
- Baseline security, QoS, and availability
- Migration path for Catalyst 2950 standard image switch customers

SKU	Access Ports	Uplink Ports
WS-C2960-24-S	24 10/100	None
WS-C2960-24TC-S	24 10/100	2 10/100/1000 or SFP
WS-C2960-48TC-S	48 10/100	2 10/100/1000 or SFP

Extending Cisco Self-Defending Networks to the Branch

Security Policy Enforcement



- Assesses posture of devices
- Uses network to enforce roles and access

**NAC Network Module for
Cisco 2800, Cisco 3800
Series**

Integrated Threat Defense



AIM IPS-K9

- Inline IPS
- Same software and management as appliances
- Dedicated CPU/DRAM

**Intrusion Prevention
System (IPS) Advanced
Integration Module (AIM)
for Cisco 1841, 2800 and
3800 Series**



Integrated Security

A graphic at the bottom of the slide featuring a central circular element with a gear-like texture, surrounded by two concentric, light blue circular bands that create a sense of motion or rotation. The text "Integrated Security" is centered within the innermost circle.

Application Performance at Branch = Headquarters

WAN Optimization



NME-WAE-522-K9

**WAAS Network Module for
Cisco 3800 Series**

- Appliance-equivalent performance for Cisco ISR

Route Optimization

Cisco ISR, 7200,
7600,
Cat6500/PISA

Cisco IOS 12.4 (15) T

**Performance Routing
(PfR)**

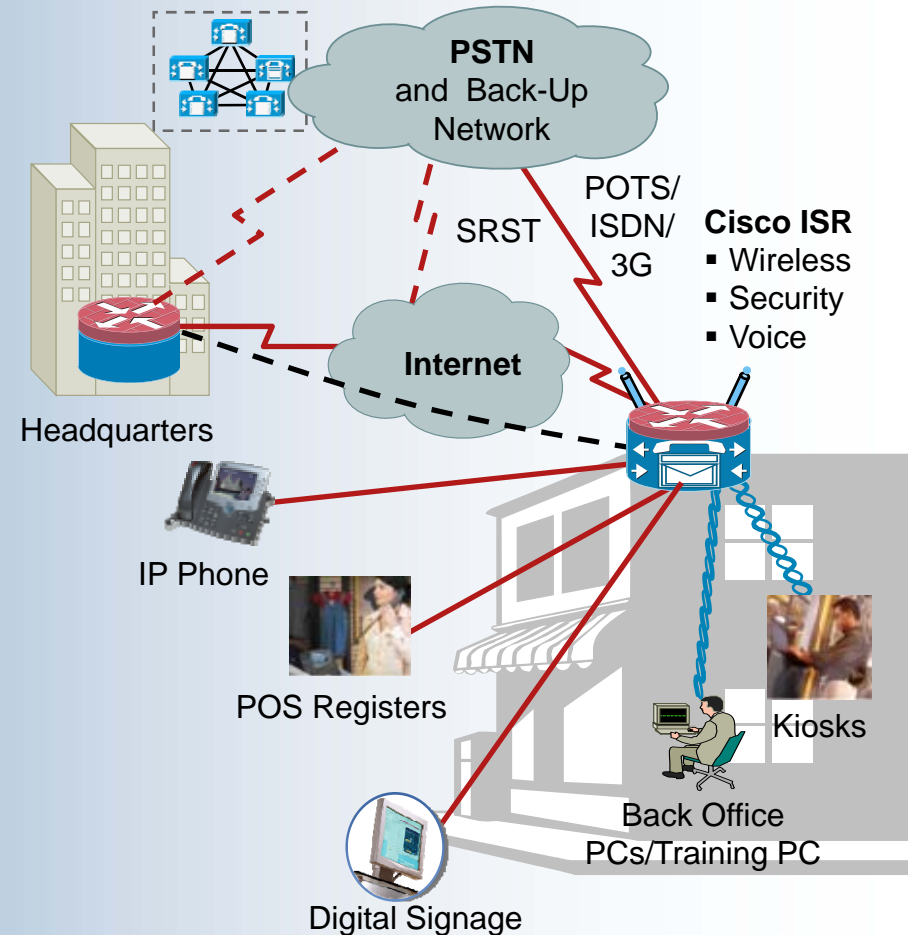
- PfR places application traffic on best performing WAN path



**Application
Intelligence**

Unified Communications at the Branch

- **Cisco Unified Messaging Gateway**
Scales/Extends Cisco Unity Express
- **Cisco Unified Communications Express (4.2)**
Call Center Applications
- **Cisco Unified Survivable Remote Site Telephony**
Includes E911 (4.1)
- **Cisco Unity Express**
Interactive Voice Response and Security enhancements (3.0)

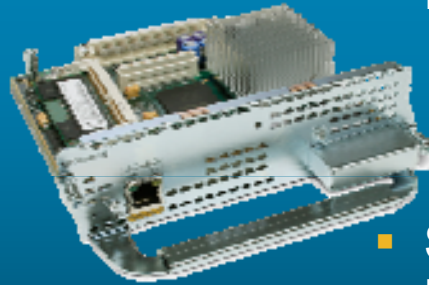


Highly Mobile Workforce Closest to the Customer in Branch Offices

Next Generation Wireless



Cisco Aironet
1250 Series



- Delivers 802.11n draft 2.0
 - 5 times higher throughput
 - More reliable coverage
- Software upgrade only for investment protection

New 802.11n Software Upgrade Available
for Wireless LAN Controller Network
Module for Cisco 2800, Cisco 3800 Series



Mobility

The Empowered Branch Bringing the Branch to Par with Headquarters



- Solution for Every Branch
 - 2 New Platforms
 - 10 Significant Services on Cisco Integrated Services Router
 - Integrated Security
 - Application Intelligence
 - Unified Network Services
 - Mobility
- Mix and Match of Integrated and Appliances
- Enables solution blue prints for the branch

