



Cisco Connected Government

Business Overview

Engr. Marnie Tolosa
Business Development Manager
Cisco Systems, Inc.

Agenda

- **Overview of Cisco Connected Government**
- **How Do I Get There?**
- **Why Cisco?**
- **Discussion**

Overview of a Cisco Connected Government



What Is a Connected Government?

- **All branches of government support the controlled flow of information**
- **Services reach constituents when they need them, where they need them, and in the way they need them**
- **Services reach more constituents with less cost**
- **Government is engaged with constituents**



CISCO CONNECTED GOVERNMENT

Connected Government: Mapping Department Mission to IT Investment

- **Reference service architecture and corresponding roadmap**
- **Roadmap transitions governments through a multiphase approach, synchronized with process change**
- **Assessment Tool to compare department mission with IT capability**

Agency Drivers for Change

▶ Intra-agency/interagency collaboration

- Enable interoperable communications to support constituent services, agency collaboration, and joint operations

▶ Infrastructure sharing

- Foster sharing of physical resources and equipment (e.g., incident command vehicles, aircraft, etc.) across agencies to reduce costs

▶ Information sharing

- Improve operational efficiency by providing equal interagency access to critical information

▶ Shared services

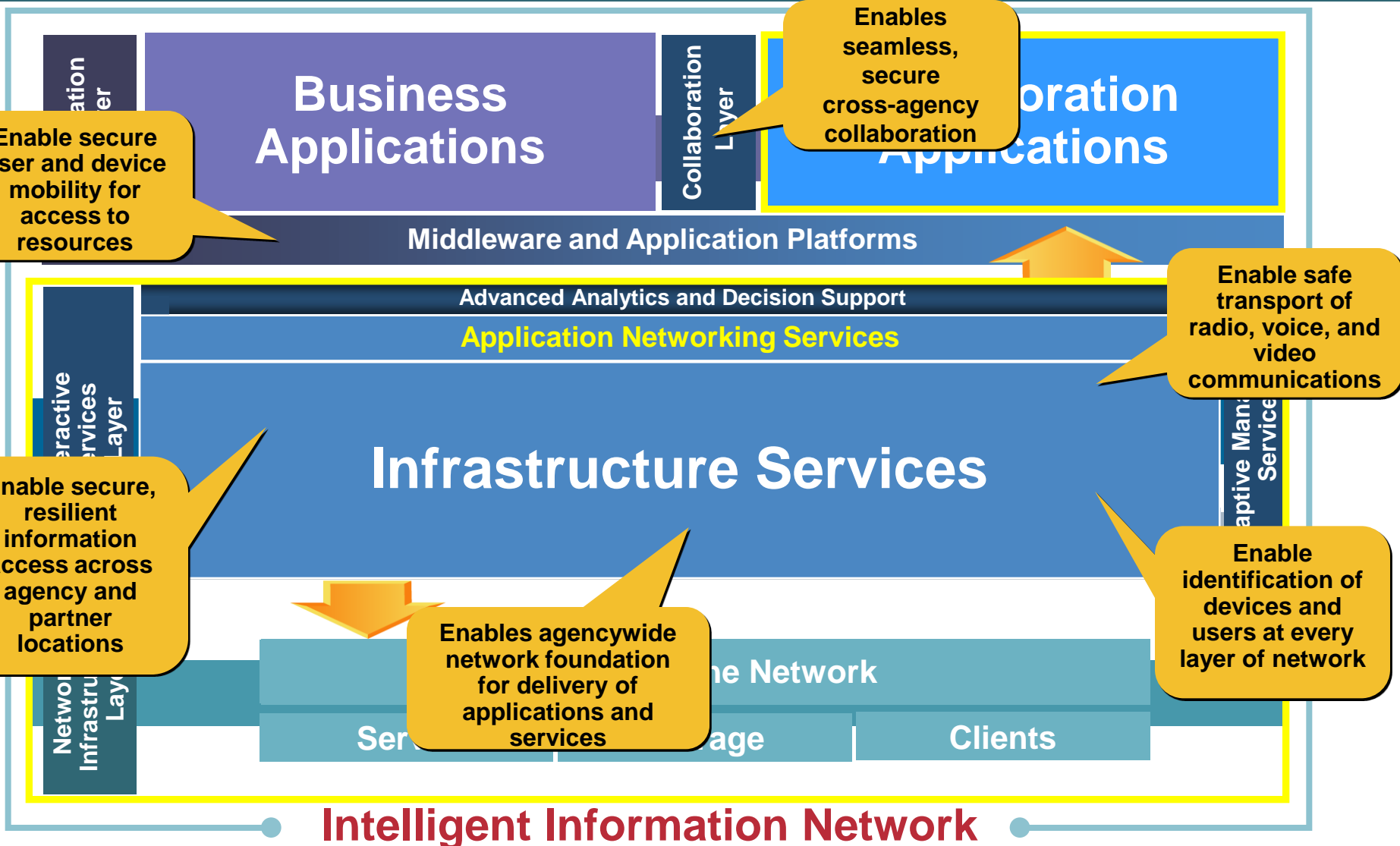
- Consolidate common government services to enhance operational efficiency

Cisco Approach for Connected Government

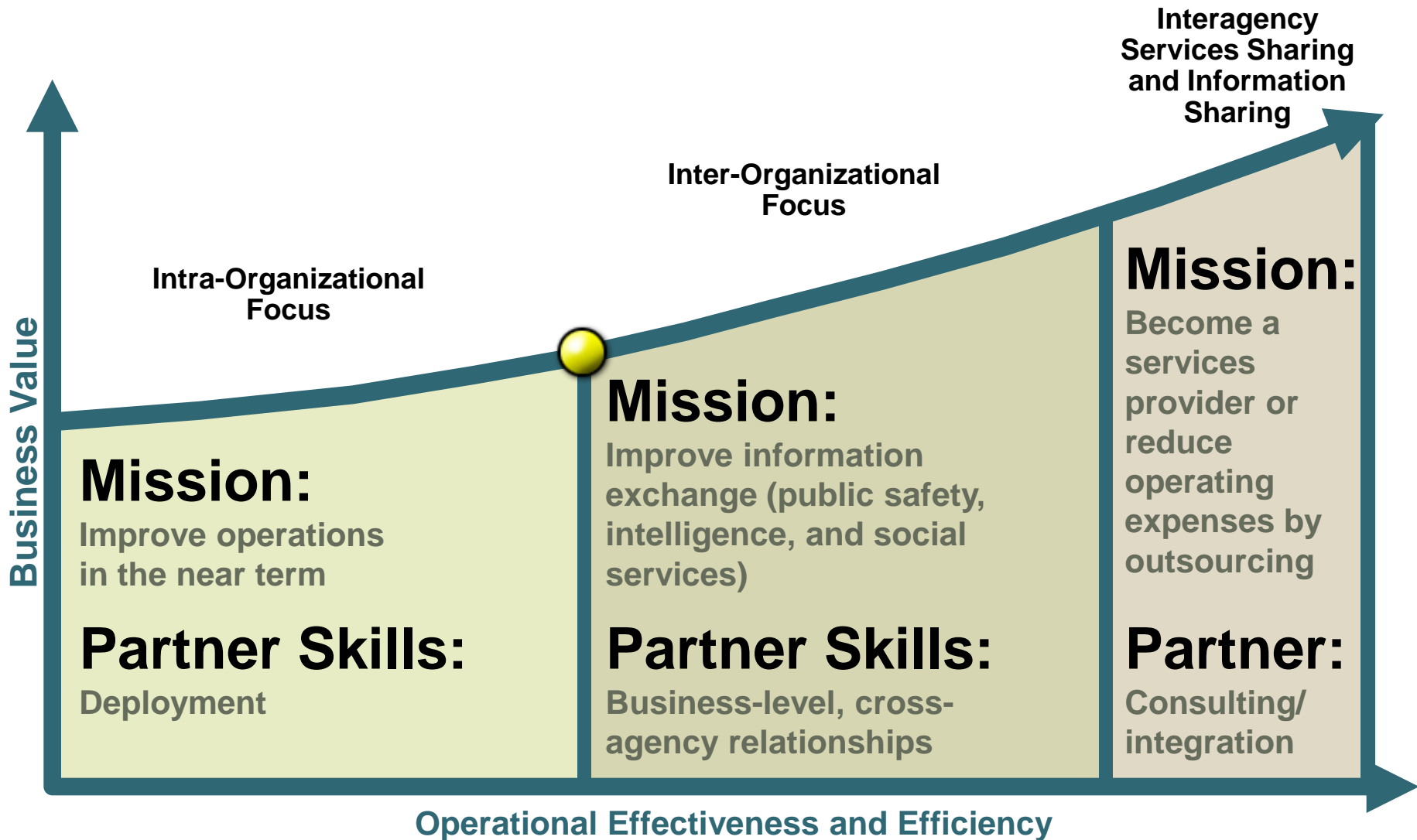
Connected Government Is Based on Three Key Tenets of an Intelligent Information Network



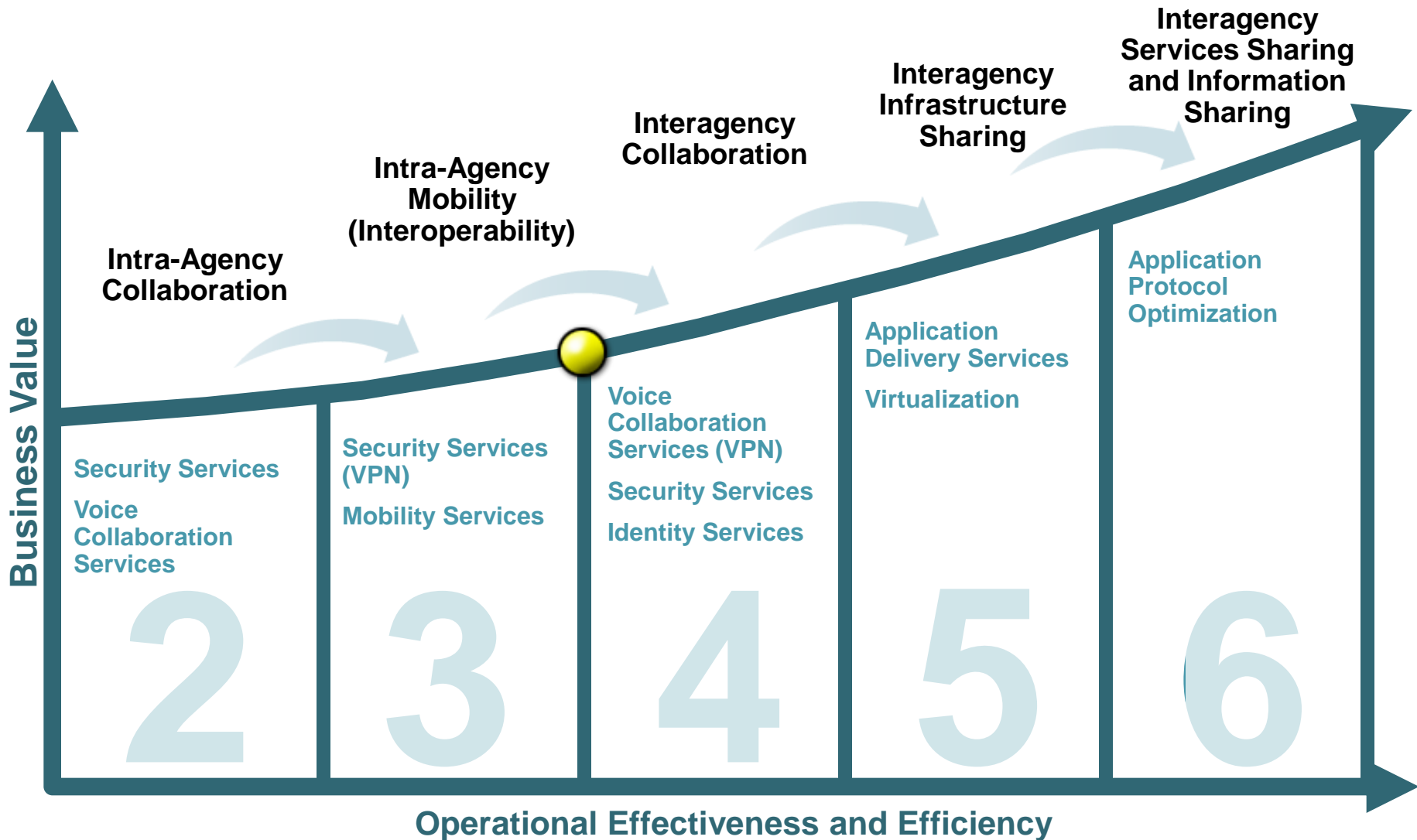
Cisco Service-Oriented Network Architecture (SONA) Framework



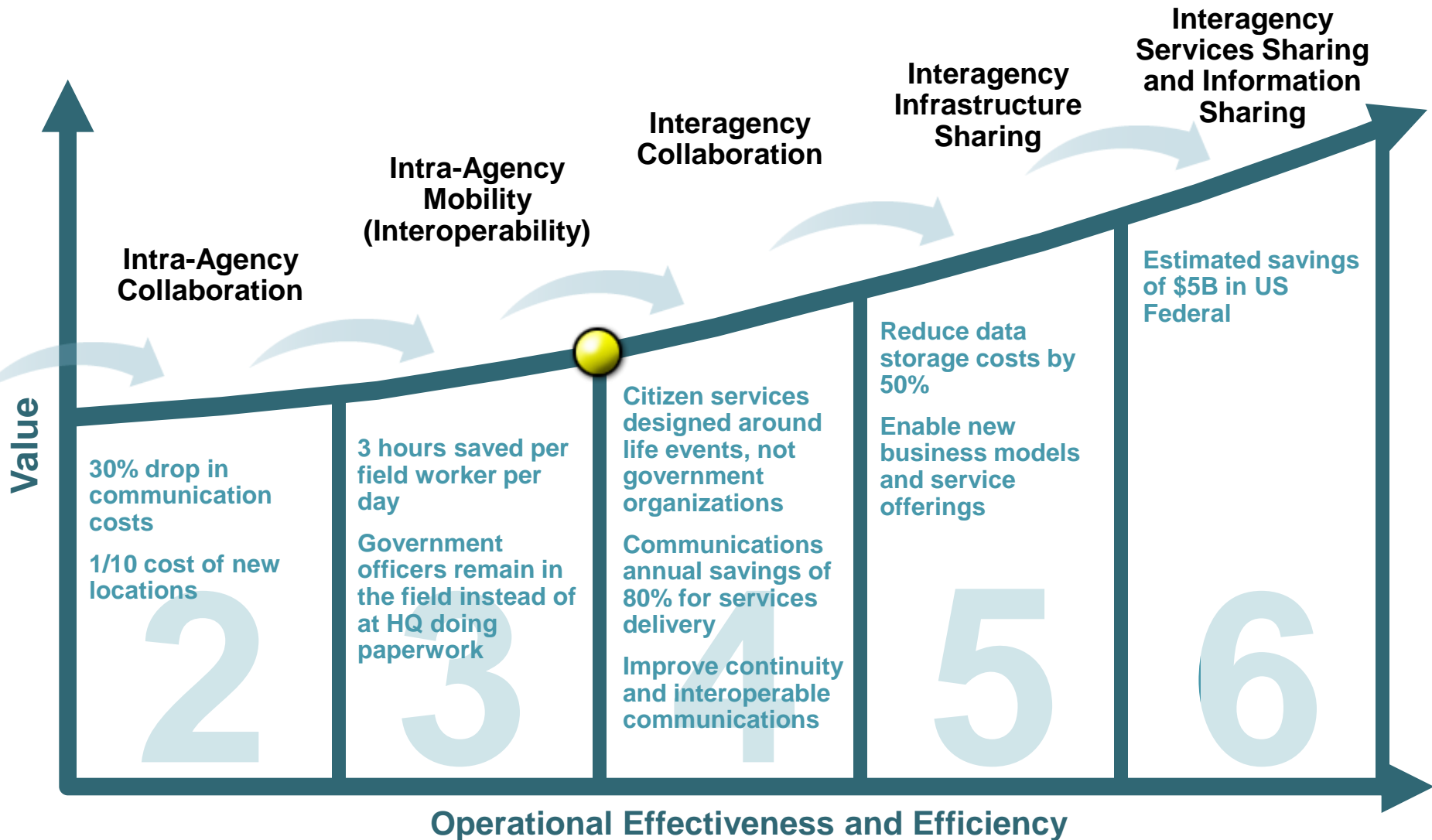
Phased Value of SONA Connected Government: Roadmap for Agencies to Achieve Their Mission



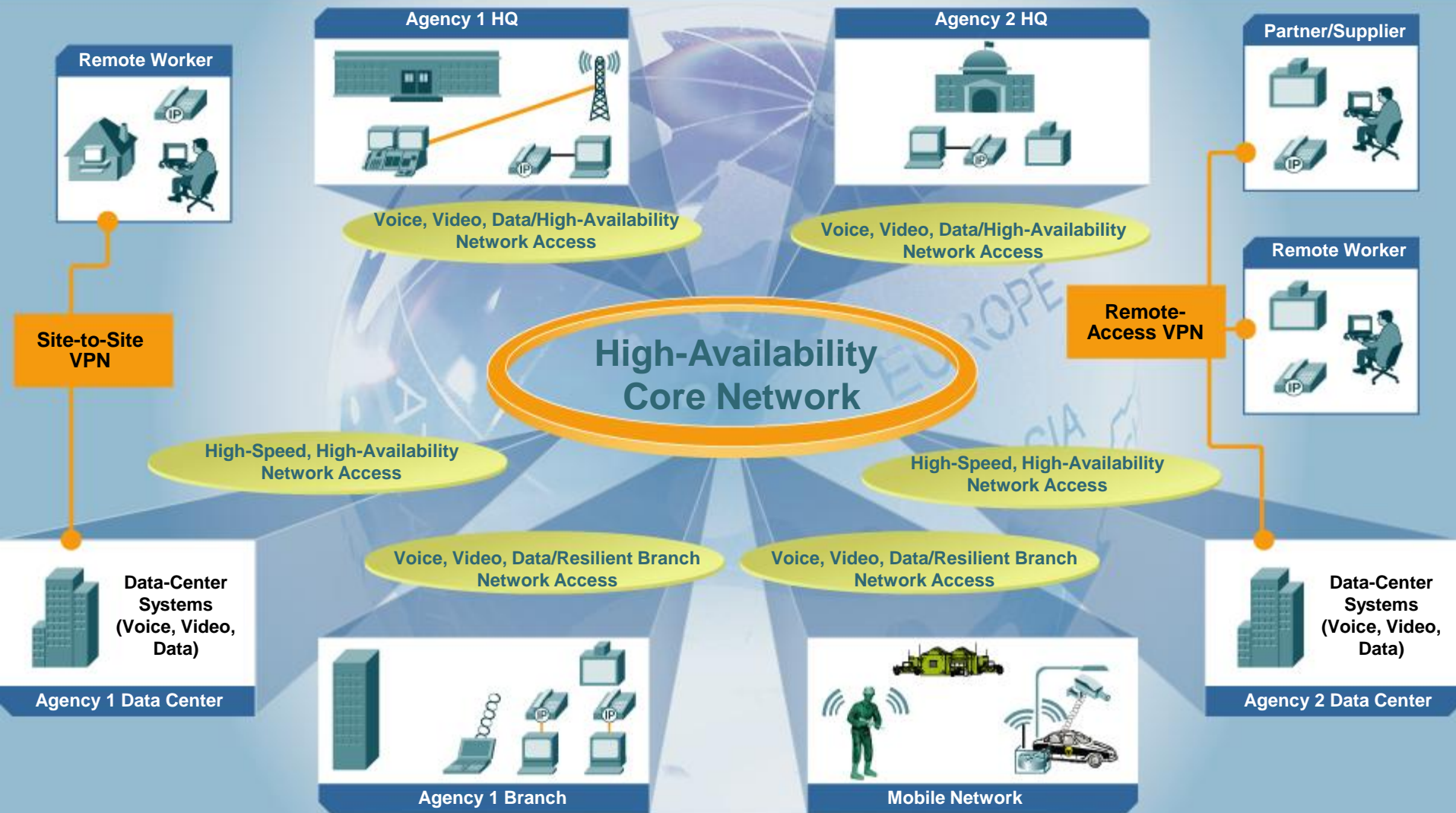
Phased Value of SONA Connected Government: SONA Services by Phase



Phased Value of SONA Connected Government: Customer benefit by phase



Connected Government: Reference Service Architecture



How Do I Get There?



Cisco Connected Government Roadmap

- Lays the groundwork for advanced constituent, government, and business services
- Each phase improves an agency's ability to share and manage real-time information

Work from inside out

1

Intra-agency focus

Enhances agency's ability to serve constituents wherever they are and whenever they need assistance

Phases 1 to 3

2

Interagency focus

Enables connectivity, communication, and collaboration between agencies

Increases service effectiveness and efficiency

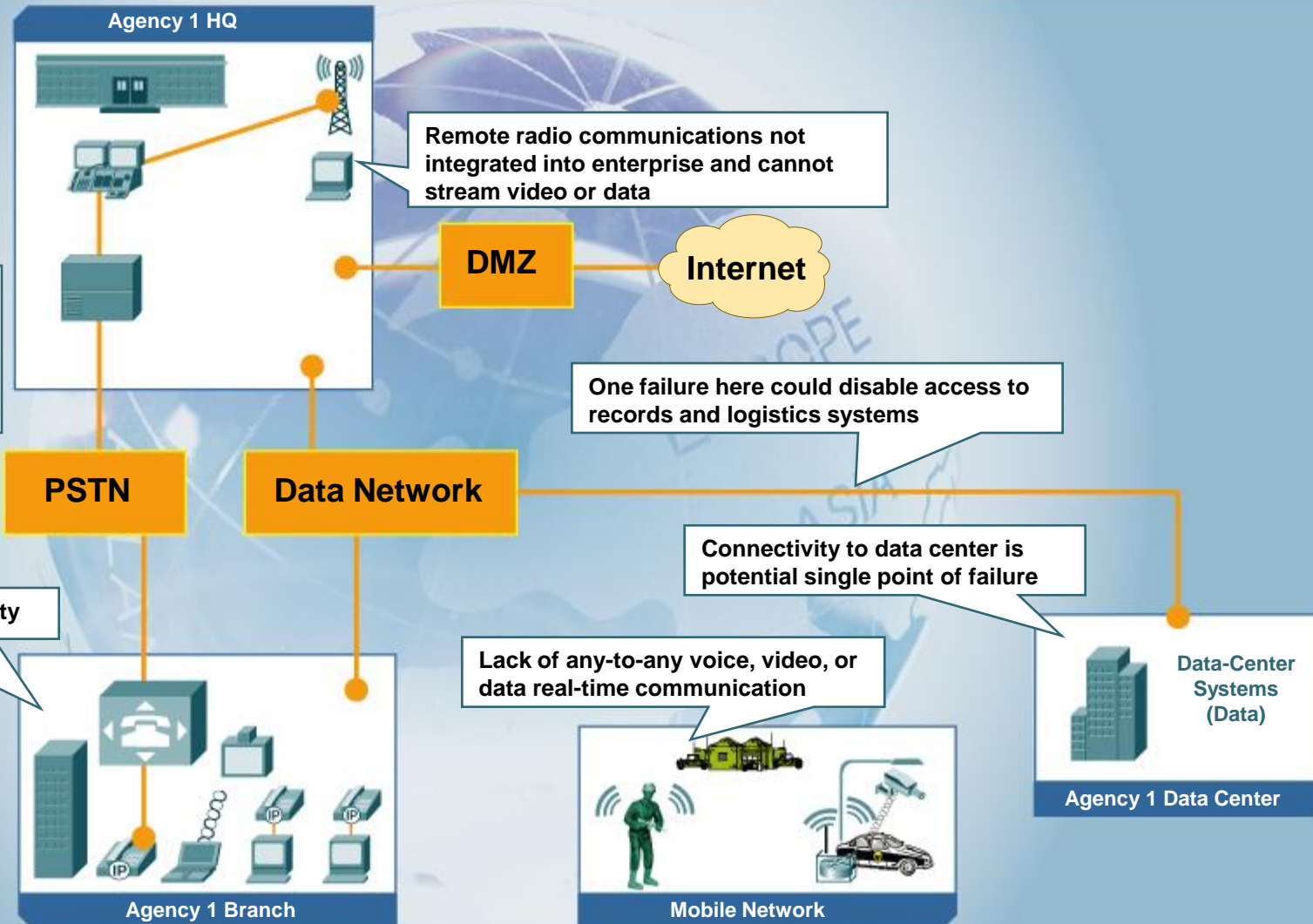
Phases 3 to 6

Connected Government Roadmap: Phase 1— “Siloed” Information and Communications Systems

“Siloed”
Government
LEVEL 1

Dedicated voice network cannot seamlessly deliver voice, video, and data to local force or support agencies

Increased cost and complexity



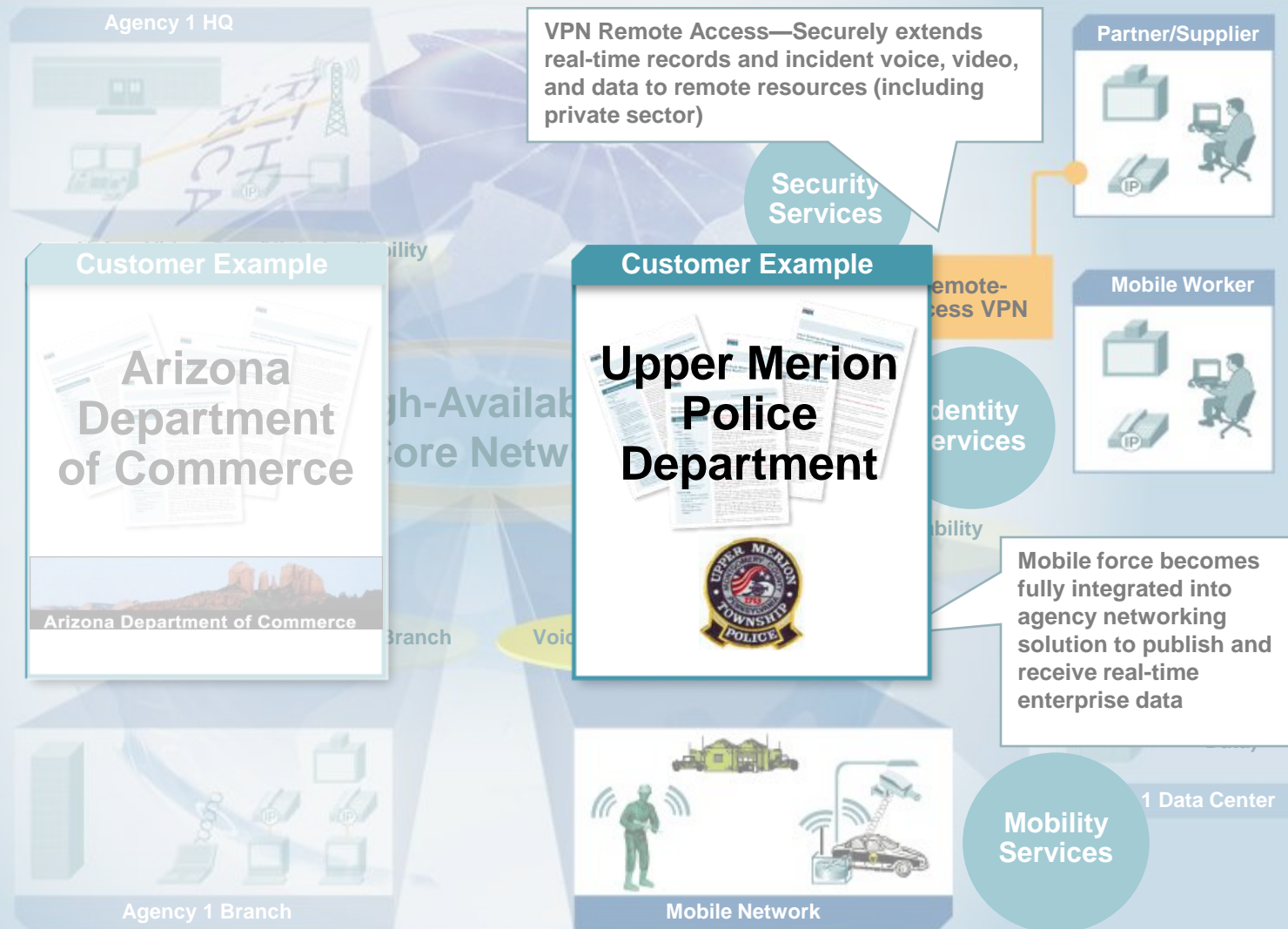
Connected Government Roadmap: Phase 2—Intra-Agency Collaboration



Connected Government Roadmap: Phase 2—Intra-Agency Collaboration



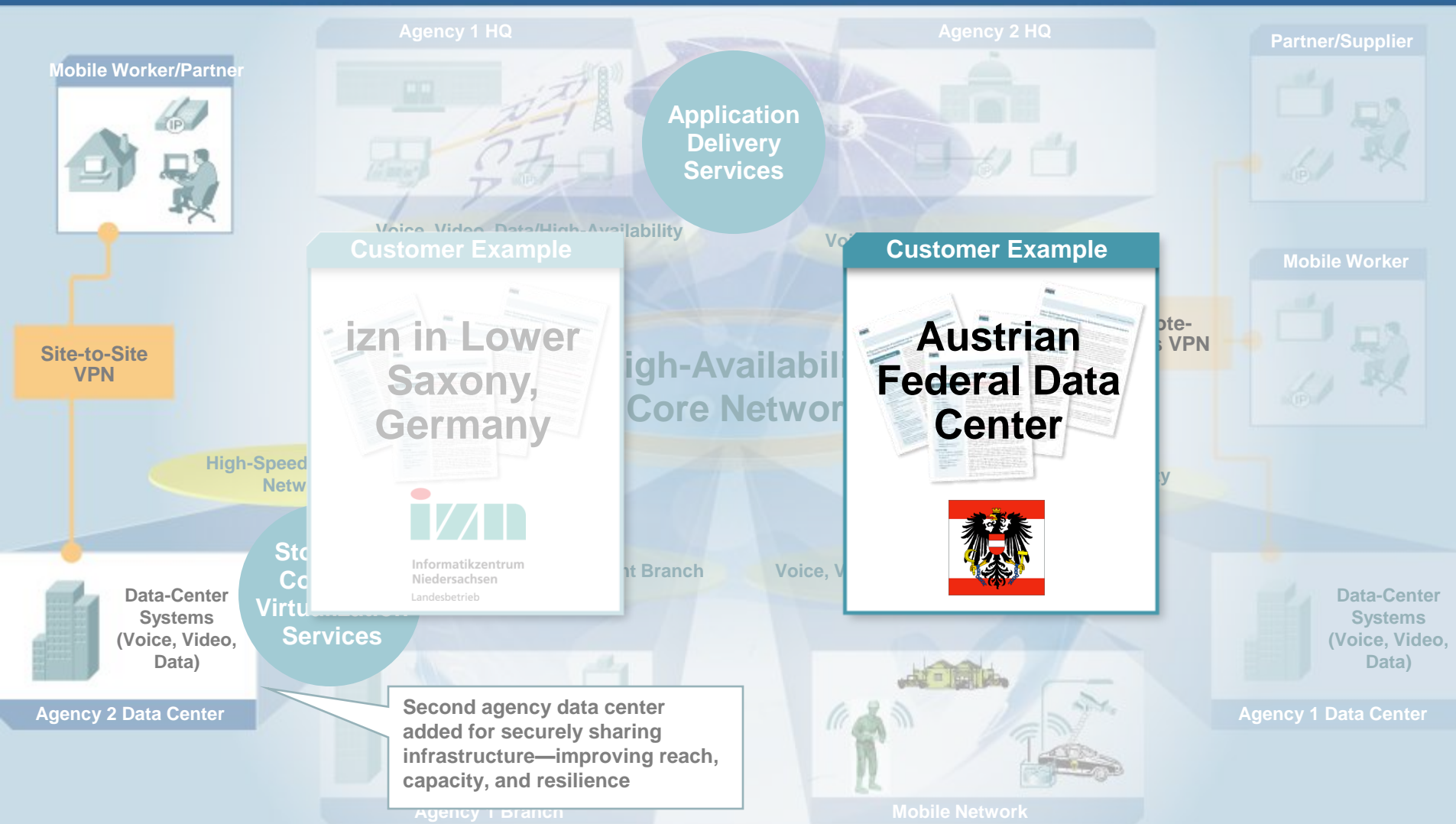
Connected Government Roadmap: Phase 3—Integrated Remote Resources



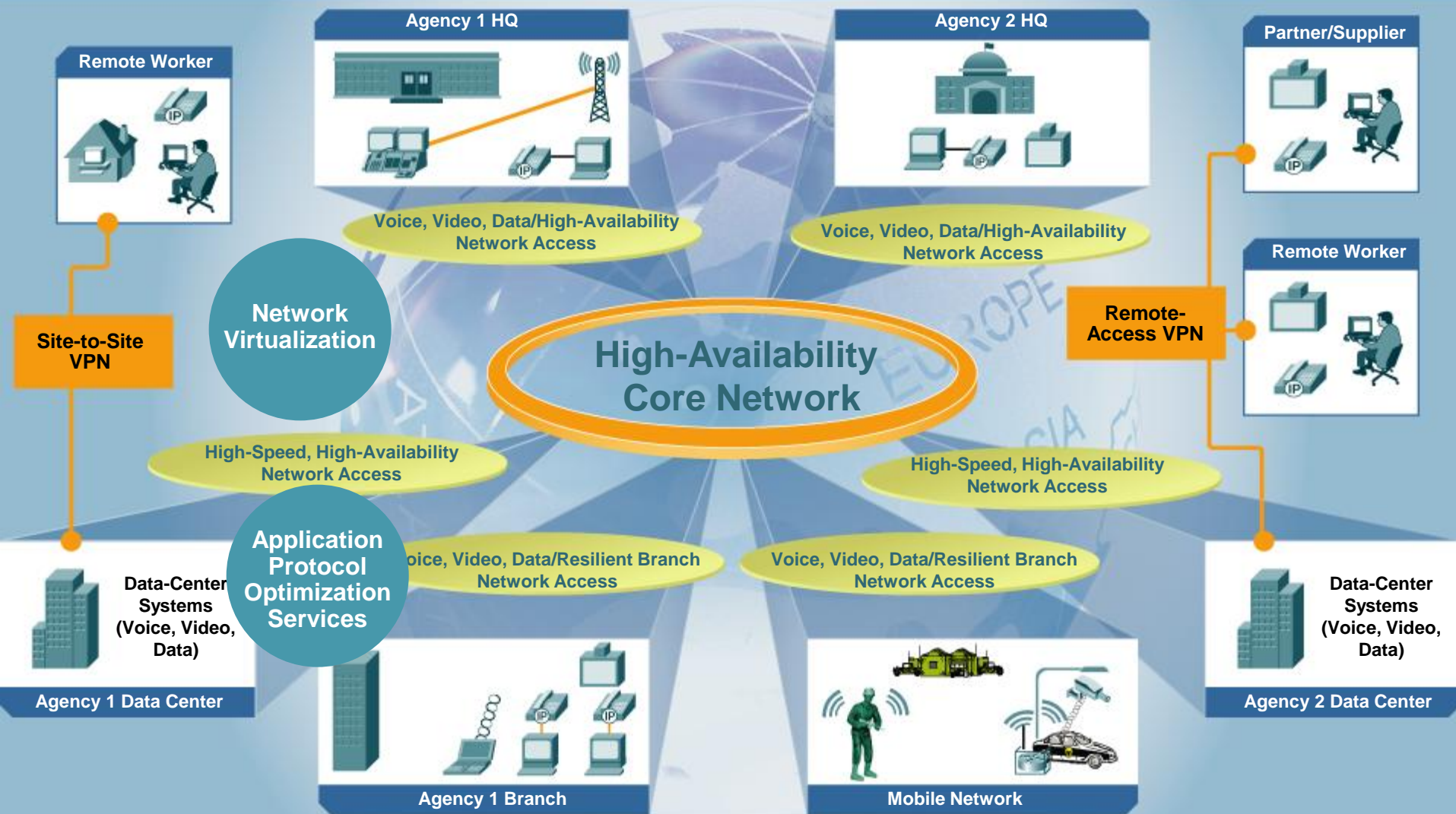
Connected Government Roadmap: Phase 4—Interagency Collaboration



Connected Government Roadmap: Phase 5—Interagency Infrastructure Sharing



Connected Government Roadmap: Phase 6— Interagency Information Sharing and Shared Services



SONA Roadmap for Achieving a Connected Government

Intra-Agency Phases

1 “Siloed” Operation

2 Intra-Agency Collaboration

3 Intra-Agency Integrated Remote Resources

Interagency Phases

4 Interagency Collaboration

5 Interagency Infrastructure Sharing

6 Interagency Information Sharing/Shared Services

Each phase moves closer to information-sharing goal **and** delivers near-term operational value

How Cisco Helps Your Agency Become a Connected Government

- **Cisco® solutions demonstrate how to apply previous success in a connected government through**

Assessment tools to create Connected Government Roadmap

Reference architectures that represent Cisco best practices developed from real-world deployments

- **Cisco and partner services that coordinate government processes to coincide with technical capabilities**

Align incentives, policy, performance management, rewards, and funding to encourage services sharing



CISCO CONNECTED GOVERNMENT

First Assess, Then Progress—the Connected Government Network Assessment Tool

Salire Advisor - Microsoft Internet Explorer

File Edit View Favorites Tools Help

Address: https://advisor.salire.com/questions/business/

Home

Step 1: Assessment Setup

Step 2: Demographic Q&A

Step 3: Capabilities Q&A

Step 4: Capability Importance Q&A

Step 5: Technology Q&A

Public Safety Network Assessment

Step 3: Enter your customer's answers to the Organizational Capabilities questions.

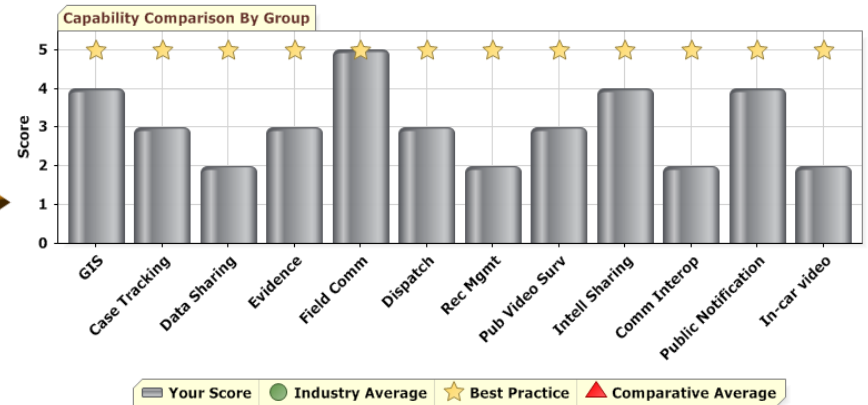
Choose the capabilities that best describe your customer's organization for each of the three timeframes: (1) now, (2) within the next 18 months, and (3) between 18-36 months.

Next Step Save & Exit Clear

1. We use Geographic Information Systems (GIS):	Now	Within the next 18 months	Between 18-36 months
Does not apply, we do not use GIS	<input type="radio"/>	<input type="radio"/>	<input type="radio"/>
To respond more effectively to calls for service	<input type="radio"/>	<input type="radio"/>	<input type="radio"/>
For crime mapping and analysis	<input type="radio"/>	<input type="radio"/>	<input type="radio"/>
For crisis management	<input type="radio"/>	<input type="radio"/>	<input type="radio"/>
All the above, plus our GIS is linked to other agencies	<input type="radio"/>	<input type="radio"/>	<input type="radio"/>
2. We track cases:	Now	Within the next 18 months	Between 18-36 months
Does not apply, our work is not case-based	<input type="radio"/>	<input type="radio"/>	<input type="radio"/>
Manually	<input type="radio"/>	<input type="radio"/>	<input type="radio"/>
With applications, for internal management of workload	<input type="radio"/>	<input type="radio"/>	<input type="radio"/>
With applications, for internal management & case status tracking	<input type="radio"/>	<input type="radio"/>	<input type="radio"/>
Online, agency-wide with case status tracking	<input type="radio"/>	<input type="radio"/>	<input type="radio"/>
3. We share data with other agencies:	Now	Within the next 18 months	Between 18-36 months
We are prohibited from sharing data	<input type="radio"/>	<input type="radio"/>	<input type="radio"/>
We transmit data on request only via offline media	<input type="radio"/>	<input type="radio"/>	<input type="radio"/>
We retrieve data on request only via offline media	<input type="radio"/>	<input type="radio"/>	<input type="radio"/>
We transmit data to other agencies' databases directly	<input type="radio"/>	<input type="radio"/>	<input type="radio"/>
We transmit and retrieve data from other agencies' databases directly	<input type="radio"/>	<input type="radio"/>	<input type="radio"/>
4. We track evidence:	Now	Within the next 18 months	Between 18-36 months
Does not apply to us, we do not handle evidence	<input type="radio"/>	<input type="radio"/>	<input type="radio"/>

Translates into

Tells You



Possible resiliency issues in the network may be compromising important capabilities:

- Public notice for emergencies
- Internal workflow management
- Budget management
- Geographic information systems (GISs)
- Dispatch systems
- Field worker communication
- Internal communications

The Road Forward

- Compare department mission and strategy with IT capabilities using the **Connected Government Assessment Tool**
- Baseline current IT capabilities
- Define IT capabilities and mission objectives gap
- Develop **phased IT roadmap** that includes network and application capabilities to close the gap
- Coordinate process and policy change with IT investment plan to match technical, political, and organizational capability



Why Cisco?



Cisco Connected Government— a Networking Approach Built to Last

- **Cisco® provides a highly adaptable network architecture that allows public administrators to meet current and future needs.**

**Highly customized design
based on proven best
practices**

**Modular network
deployment based on
integrated components**

**Optimal
performance**

**Continuously
expanding
functionality**

**Future-proofed
roadmap**