

The Future of Building Technology

Smart Buildings

Mazen Nour
SE Team Leader



Baud Telecom Company

Linking to the Future



Agenda

- **Current Business Model**
- **“Smart” in our life**
- **IP Life Ecosystem**

Agenda

- **Current Business Model**
- “Smart” in our life
- IP Life Ecosystem

Business Model

Life Style

- **Hyperconnectivity** — the number of devices and applications connected to the network far exceeds the number of people using the network.
- Multiple smart devices with **each person**: Iphones, ipod, 3Gphones, laptops, mobile TV, wireless game consoles...etc
- **Smart** devices used for **everything**: online shopping, online music, online medical consultation, asset & workforce tracking, communications...etc

Opportunities

- More connections with more human transactions – opens new fields of revenue
- Carriers offer new behaviour-based services to address various customer requirements
- Connecting **everything** to the network (phones, ipods, BMS, IPCCTV, laptops, TVs, gaming consoles, ...etc)
- maximizing ARPU (Average Revenue Per User) by offering new services:
 - Location-based services
 - Multimedia communications
 - Online applications to maximize user airtime

Challenges

- bandwidth-hungry applications like video, gaming, music...etc
- different devices & applications need different levels of authorization, authentication, security, and OAM
- privacy concerns where everything is connected and possibly tracked
- **right systems** — end-to-end networks that can seamlessly handle, adapt, and integrate communications across the entire spectrum of networks, devices, and traffic types, with the reliability and quality of experience. **It needs carrier-grade experienced vendor**

Agenda

- Current Business Model
- **“Smart”** in our life
- IP Life Ecosystem

“Smart” in our Life



SMART



“Smart” in our Life



Control every light from your phone.
Adjust brightness for any bulb



Any bulb, any color.
Match your mood or your decor.



Automatic on and off.
Your lights come on when you get home
and switch off when you leave.

“Smart” in our Life

Multiple Panes



1990

Switchable Glass



2012

**Smart Window -
Integration with HVAC &
Lighting**



2020

Source: Frost & Sullivan

“Smart” in our Life



The whole picture

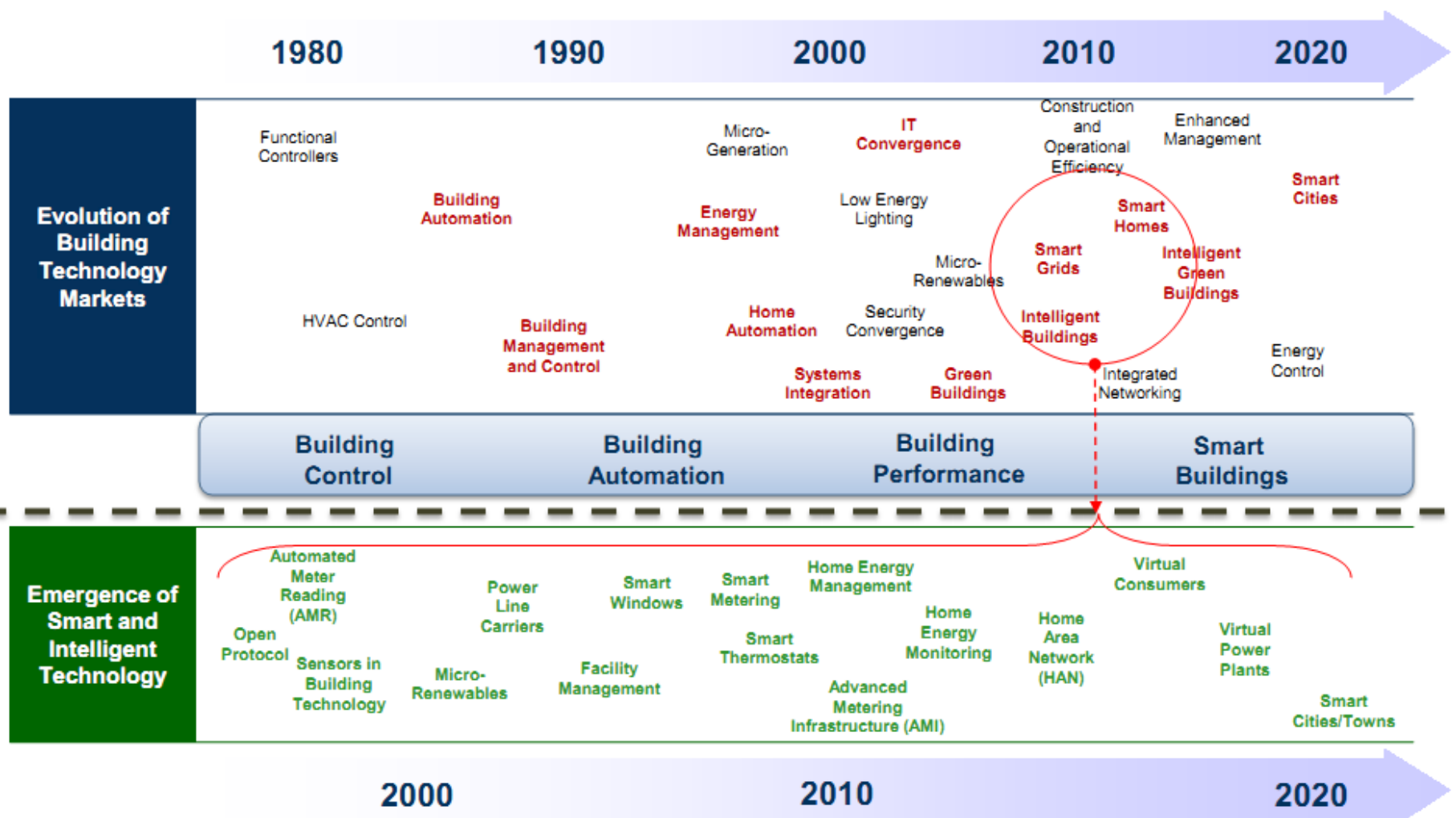


Innovation is under way



Source: Frost & Sullivan

Progression Towards Smart Buildings



Source: Frost & Sullivan analysis.

Major Drivers and Restraints

A large, light blue 3D-style arrow pointing upwards, positioned to the left of the central content box.

Driver

- Development Of Smart Technologies
- Efficient Energy use
- Comfort
- Return on Investment

- High Initial Investment
- Expertise
- Awareness

A large, light blue 3D-style arrow pointing downwards, positioned to the right of the central content box.

Restraint

The Message



Growth of the building technology industry will center around the integration of ICT in buildings – Smart technologies are the key demand segment for growth.



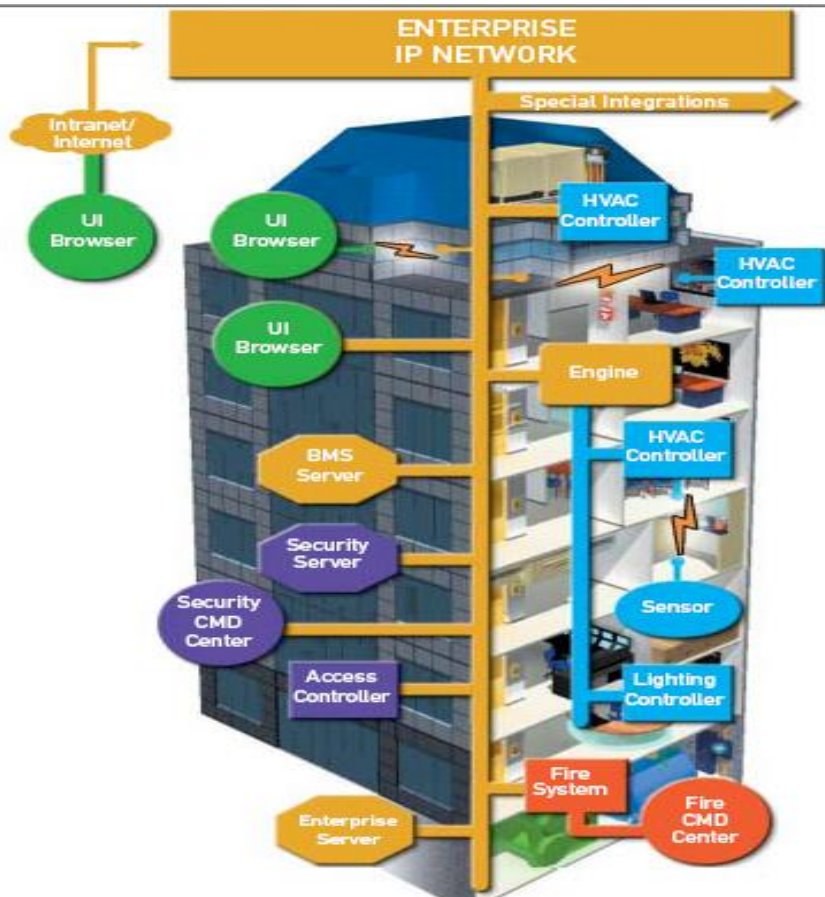
Smart buildings will imply integration of building services on a single platform – Building automation and home automation will provide this platform for non residential and residential buildings respectively

Agenda

- **Current Business Model**
- **“Smart” in our life**
- **IP Life Ecosystem**

IP Life Ecosystem

simplifying the environment



Standard Core IP Network

supports all types of communication and business requirements

- One secure communication network
- Converged
- Multimedia rich
- Mobility enabled

Lowers Costs through Simplicity

- Lowers capital and operating costs
- Increases productivity of infrastructure managers
- Allows for growth in real-time (invest when needed, not before)

IP Life Ecosystem

- The ecosystem provides the following services in native IP transport format
 - data transfer
 - Multitenant business telephony, VPN, multimedia, & security
 - Hospitality & messaging
 - TV & online entertainment
 - Wireless broadband internet

IP-Life Ecosystem



IP-Life Ecosystem

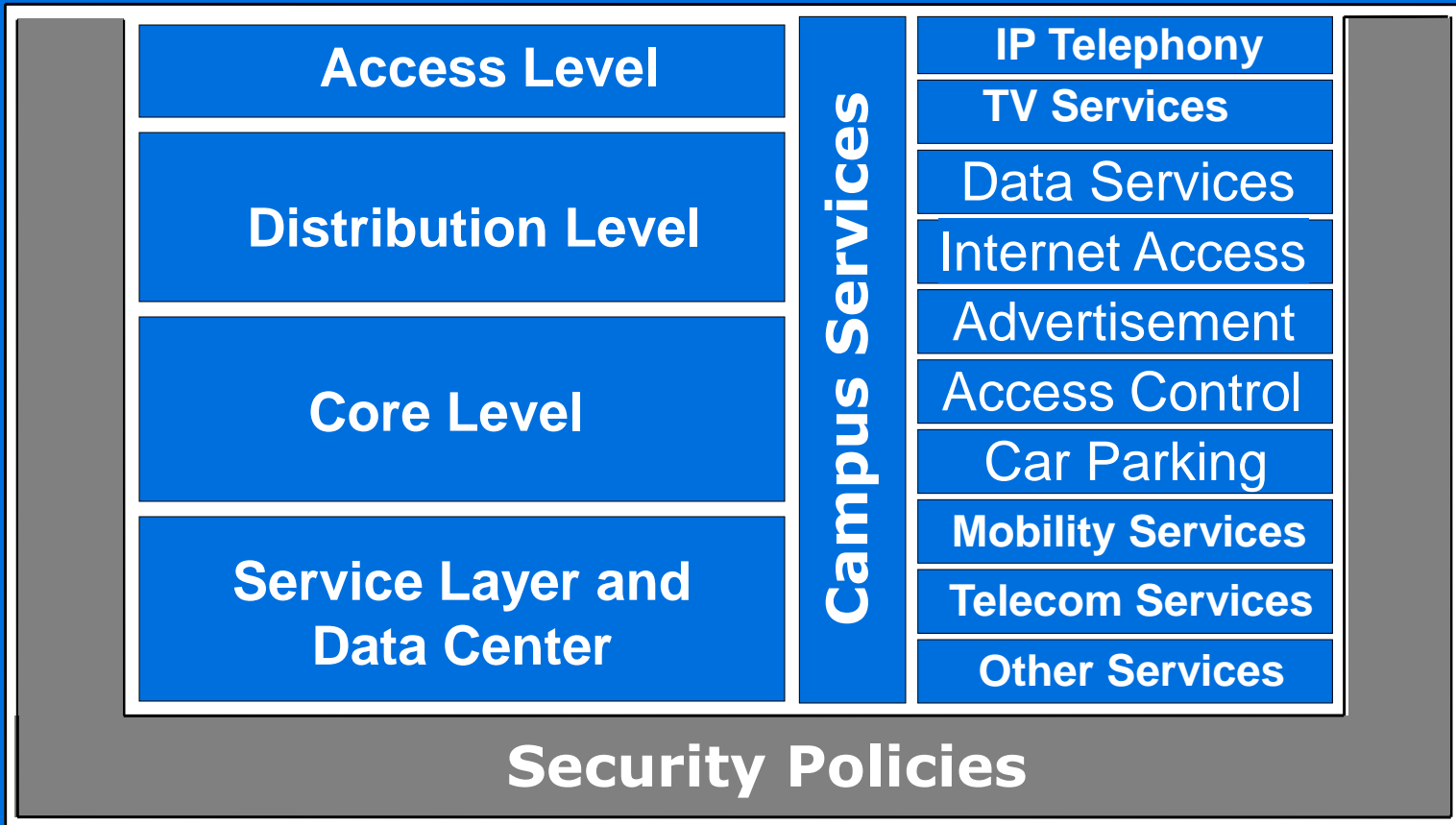
Services Spectrum



IP-Life Ecosystem

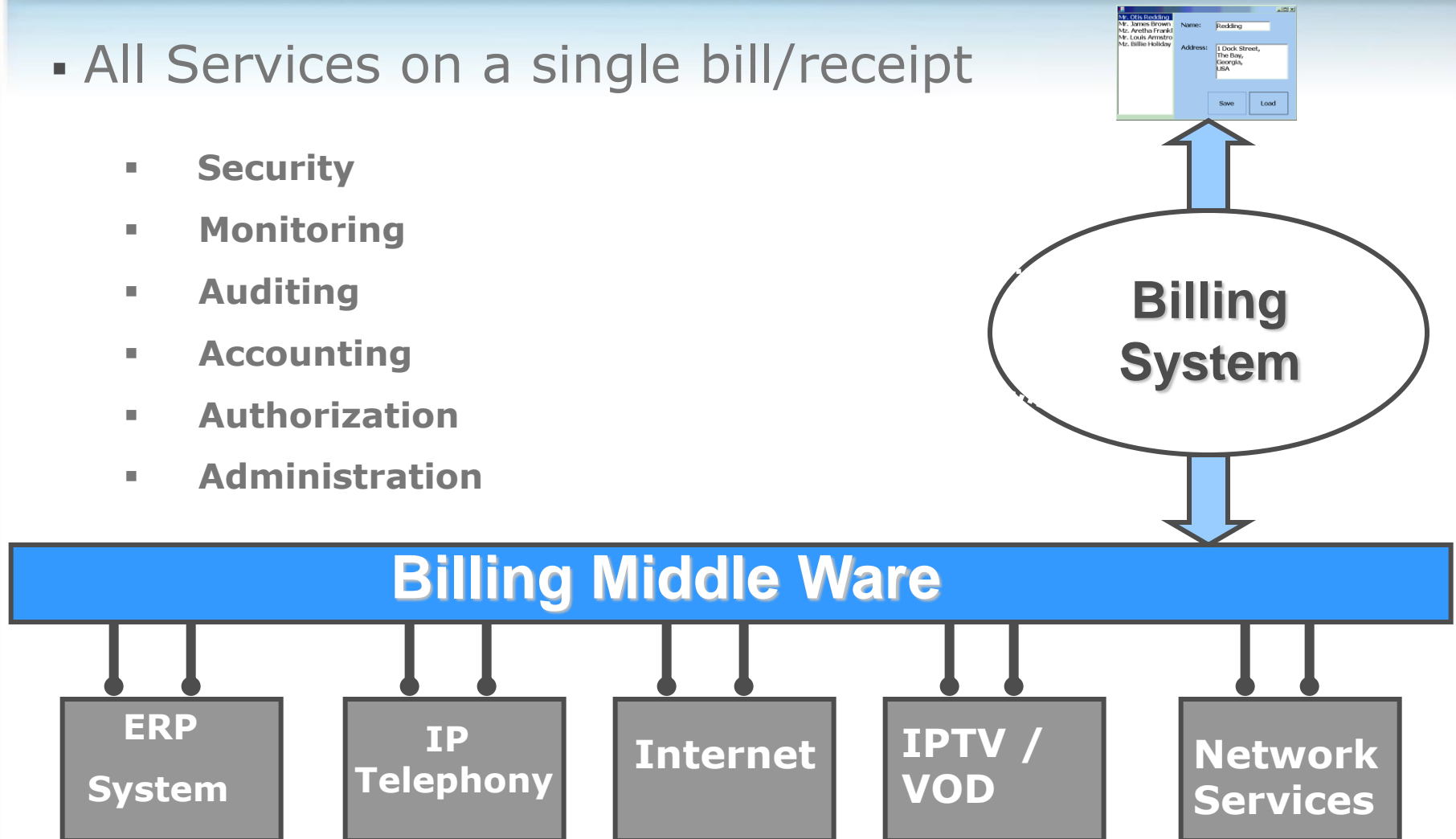
Service Architecture overview

Management



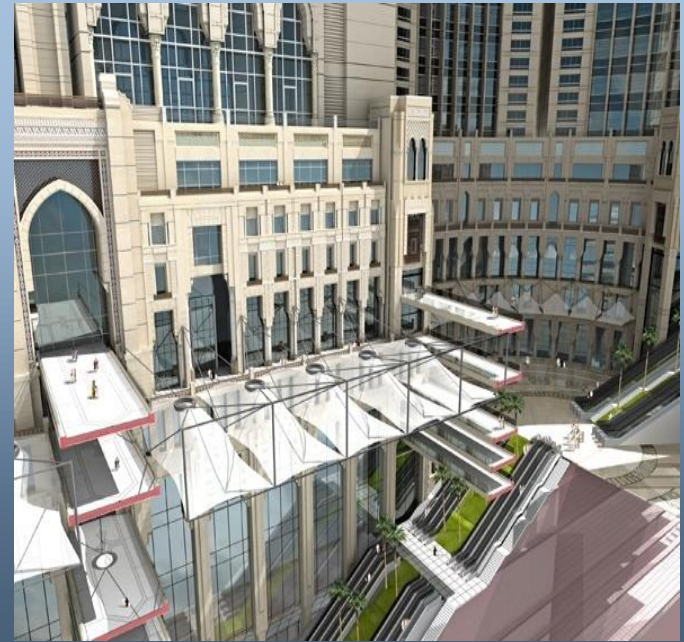
IP-Life Ecosystem: Services Billing Service Architecture

- All Services on a single bill/receipt
 - Security
 - Monitoring
 - Auditing
 - Accounting
 - Authorization
 - Administration



IP-Life Ecosystem service offering

**Smart Building
Based on
Service Oriented Architecture**



IP-Life Ecosystem

Importance of Services

1

Services focused on **Business Requirements**

2

Services that **Generate Revenue**

3

Services that **Maintain Revenue**

4

Services that **Lowers OPEX**



The Last Word

Pillars of a successful Smart Building Solution



Thank You

Q & A

