



Dynamic Configuration Tool 簡易説明書

<https://tools.cisco.com/qtc/config/html/configureHomeGuest.html>

上記へアクセスすると、下記画面が表示されます。

Cisco Configuration Tool - Home - Windows Internet Explorer provided by Cisco

https://tools.cisco.com/qtc/config/html/configureHomeGuest.html

Cisco Configuration Tool - Home

Cisco Dynamic Configuration Tool

Cisco Home | NPM | Login | Profile

You are logged in as: GUEST

[HELP](#)

Cisco Dynamic Configuration Tool enables online configuration of Cisco products and offers detailed compatibility information and intelligent feedback to streamline the ordering process. Use the help links to the right or start a configuration below.

Cisco Value Added Resellers that prefer to receive list price information from Cisco Dynamic Configuration Tool will need to Login with their Cisco Connection Online (CCO) id and password. Click here to [Login](#)

Resources

- [Login to Dynamic Configuration Tool](#)
- [Getting Started](#)
- [Quick Tips](#)
- [News & Enhancements](#)
- [Cisco Feature Navigator](#)

Product Search

Enable Configuration Guidance
[Tell Me About Configuration Guidance](#)

Search by: Product Family

Enter Product Family: Application Control Engine (ACE)

Local intranet 100%

ここでは例として製品番号「WS-C2960-24-S」を検索します。上記画面で Search by 「Product Number」を選択します。

Cisco Configuration Tool - Home - Windows Internet Explorer provided by Cisco

https://tools.cisco.com/qtc/config/html/configureHomeGuest.html

Cisco Configuration Tool - Home

Cisco Dynamic Configuration Tool

Cisco Home | NPM | Login | Profile

You are logged in as: GUEST

HELP

Cisco Dynamic Configuration Tool enables online configuration of Cisco products and offers detailed compatibility information and intelligent feedback to streamline the ordering process. Use the help links to the right or start a configuration below.

Cisco Value Added Resellers that prefer to receive list price information from Cisco Dynamic Configuration Tool will need to Login with their Cisco Connection Online (CCO) id and password. Click here to [Login](#)

Resources

- [Login to Dynamic Configuration Tool](#)
- [Getting Started](#)
- [Quick Tips](#)
- [News & Enhancements](#)
- [Cisco Feature Navigator](#)

Product Search Enable Configuration Guidance
[Tell Me About Configuration Guidance](#)

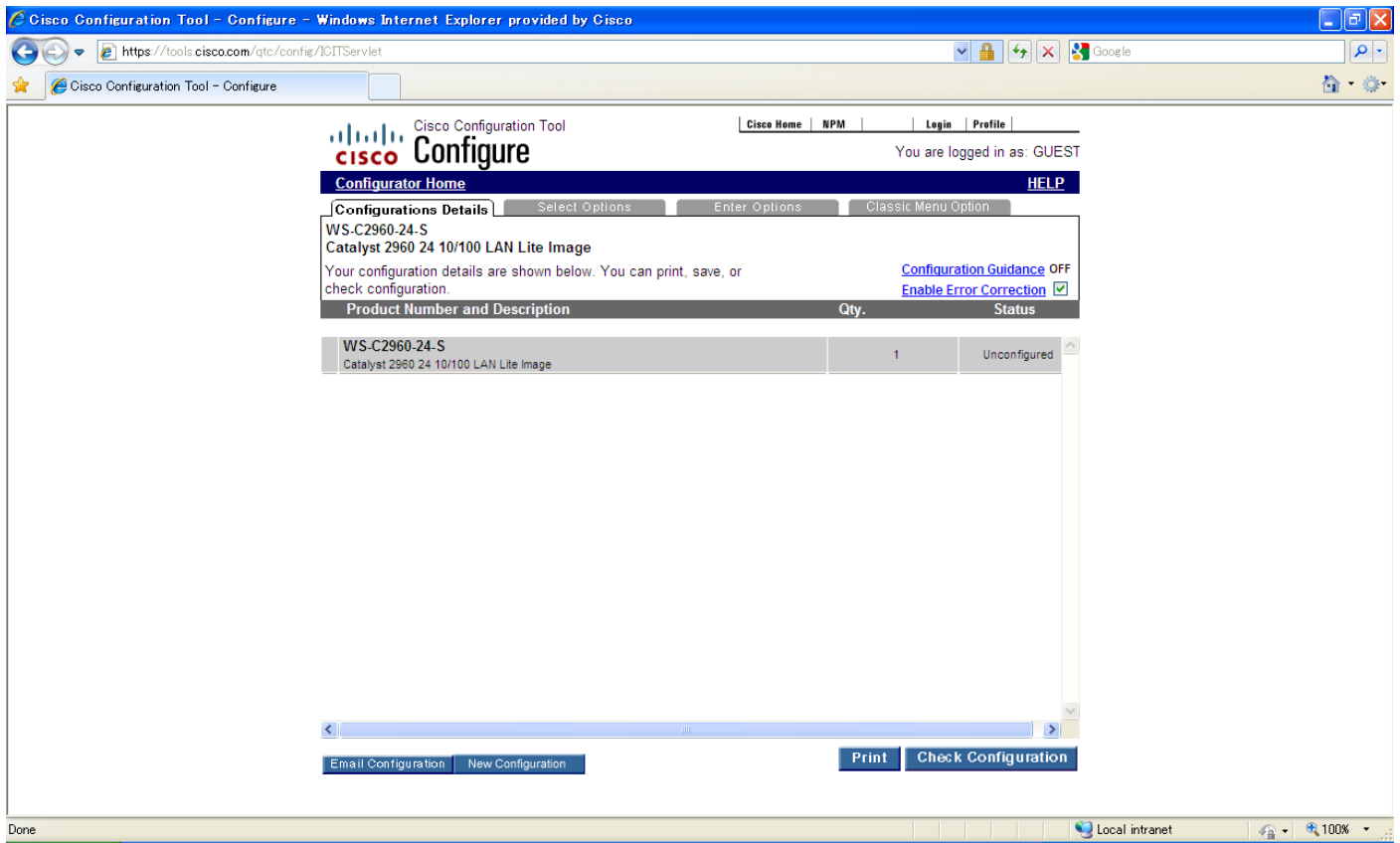
Search by Enter Product Number

Product Number WS-C2960-24-S

Search

Done Local intranet 100%

「Enter Product Number」に「WS-C2960-24-S」を入力して、「Search」ボタンをクリックします。



上記画面で、「Select Options」をクリックします。



上記画面で、「POWER CABLES」をクリックします。



すると、上記画面になります。ここでは、例として電源ケーブル「CAB-JPN」を選択します。次に、「Check Configuration」ボタンをクリックします。

Cisco Configuration Tool - Completed Configuration - Windows Internet Explorer provided by Cisco

https://tools.cisco.com/qtc/config/JOITServlet

Cisco Configuration Tool
Completed Configuration
Configurator Home HELP

You are logged in as: GUEST

You have successfully completed your configuration!

For Pricing and Leadtime information, please contact a [Cisco Partner or Reseller](#)

Product Number and Description	Qty
WS-C2960-24-S Catalyst 2960 24 10/100 LAN Lite Image	1
CAB-JPN AC Power Cord (Japan), C13, JIS C 8303, 2.5m	1

Email Configuration Print Download New Configuration Edit Configuration

構成内容が通ると、「You have successfully completed your configuration!」メッセージ画面が出てきます。

注意 1：上記は例として取り上げたものであり、製品番号によって構成内容が異なる場合がございます。

注意 2：上記は例として取り上げたものであり、お客様のご要望に沿って構成頂くようお願い申し上げます。