

**Demand More. Do More.**  
**With AT&T Business Solutions**

Anders Juhlin

Sales Centre Vice President – Nordic Countries

AT&T Business Solutions

© 2009 AT&T Intellectual Property. All rights reserved.  
AT&T, AT&T logo and other marks contained herein are trademarks  
of AT&T Intellectual Property and/or AT&T affiliated companies.



# Safe Harbor Statement

## Cautionary Language Concerning Forward-Looking Statements

Information set forth in this presentation contains financial estimates and other forward-looking statements that are subject to risks and uncertainties, and actual results might differ materially. A discussion of factors that may affect future results is contained in AT&T's filings with the Securities and Exchange Commission. AT&T disclaims any obligation to update and revise statements contained in this presentation based on new information or otherwise.

# Striving for More

Improved Cost and Asset **Efficiency**

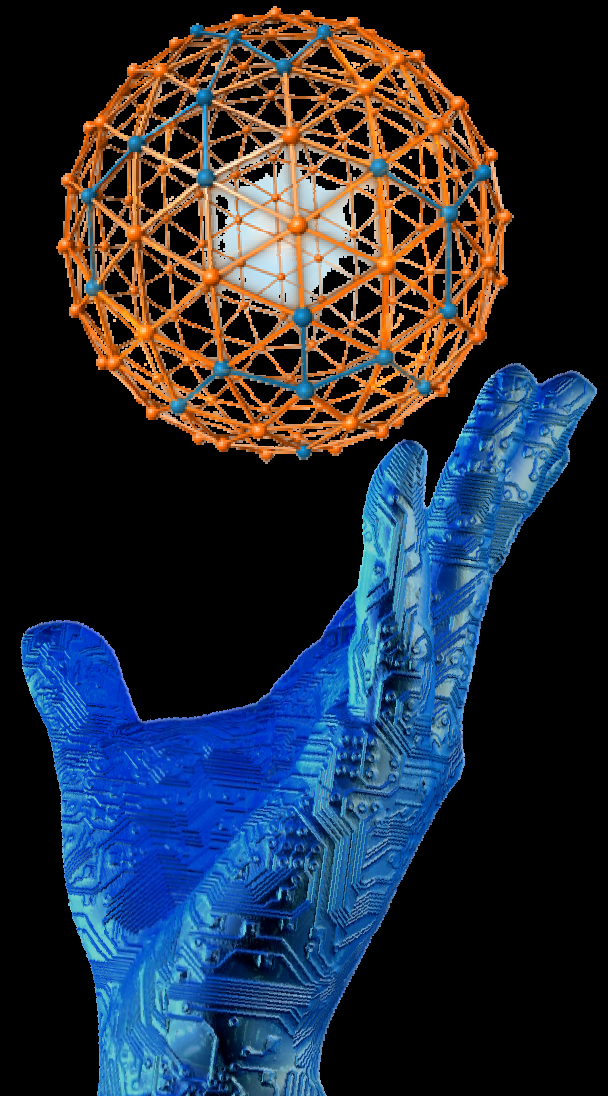
*Get Leaner*

Sharper Business Process **Performance**

*Work Better*

Quicker Market **Responsiveness**

*Run Faster*



**Slide 3**

---

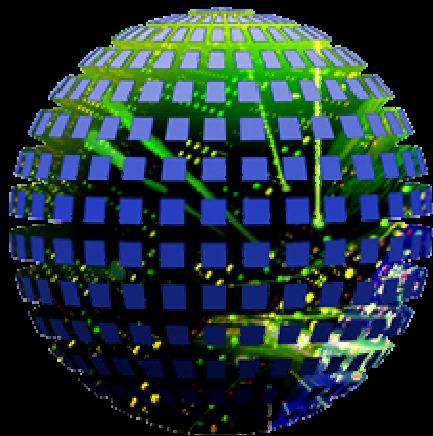
**bs2**

**THIS SLIDE CAN BE USED TO GET AT CLIENT POINTS OF EMPHASIS AND TO UNDERSTAND PRIORITIES OR INITIATIVES AT WORK  
IN THEIR BUSINESS THAT MAP TO THESE UNDERLYING BENEFITS**

bstrawderman; 18.5.2009

# Contending With More

Forces Shaping the Enterprise



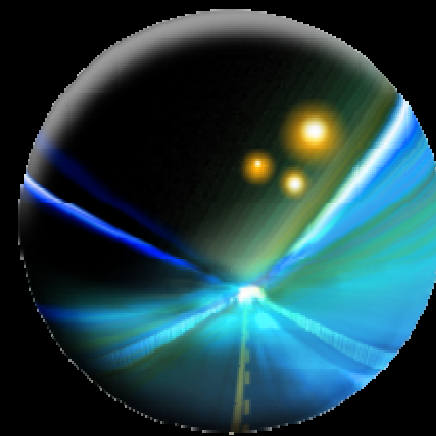
More  
Unpredictable  
Environment

**Technology &  
Capital**



More  
Distributed  
Enterprise

**Value Chain &  
Endpoints**



More  
Interactive  
Users

**Immersion &  
Collaboration**

## Slide 4

---

**bs1**

THIS SLIDE IS OPTIONAL AND CAN BE DELETED. USE THIS SLIDE IN A SHORTENED VERSION OF THE PRESENTATION IN LIEU OF THE FOLLOWING 3 TRENDS SLIDES

bstrawderman; 18.5.2009

# We Get It. You Demand More.

## You Contend With More

- Greater Uncertainty
- Broader Reach
- Demanding Users

## You Strive For More

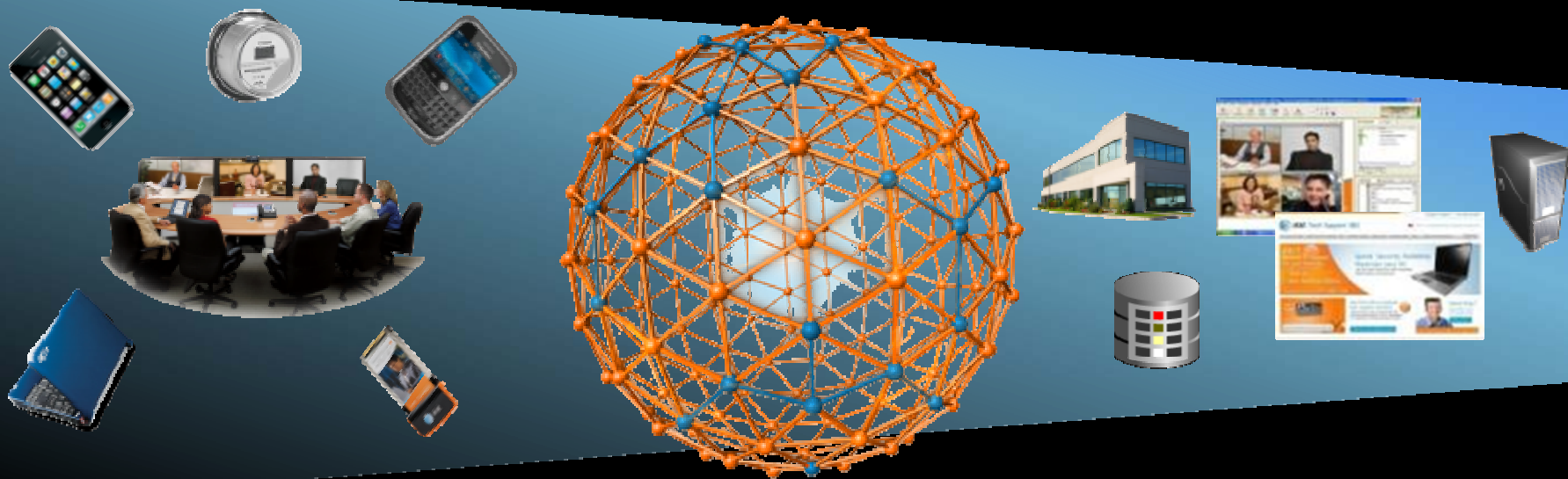
- Leaner Operations
- Better Processes
- Faster Response Time

You need to **transform** how people, process, and ideas **interact** across your **value** chain: less friction, more flexibility, and better TCO.



# We're Built to Do More

AT&T's strategy is to **globally** deliver network, computing and application services to any device, and **transform** the way these services are used by **our clients**.



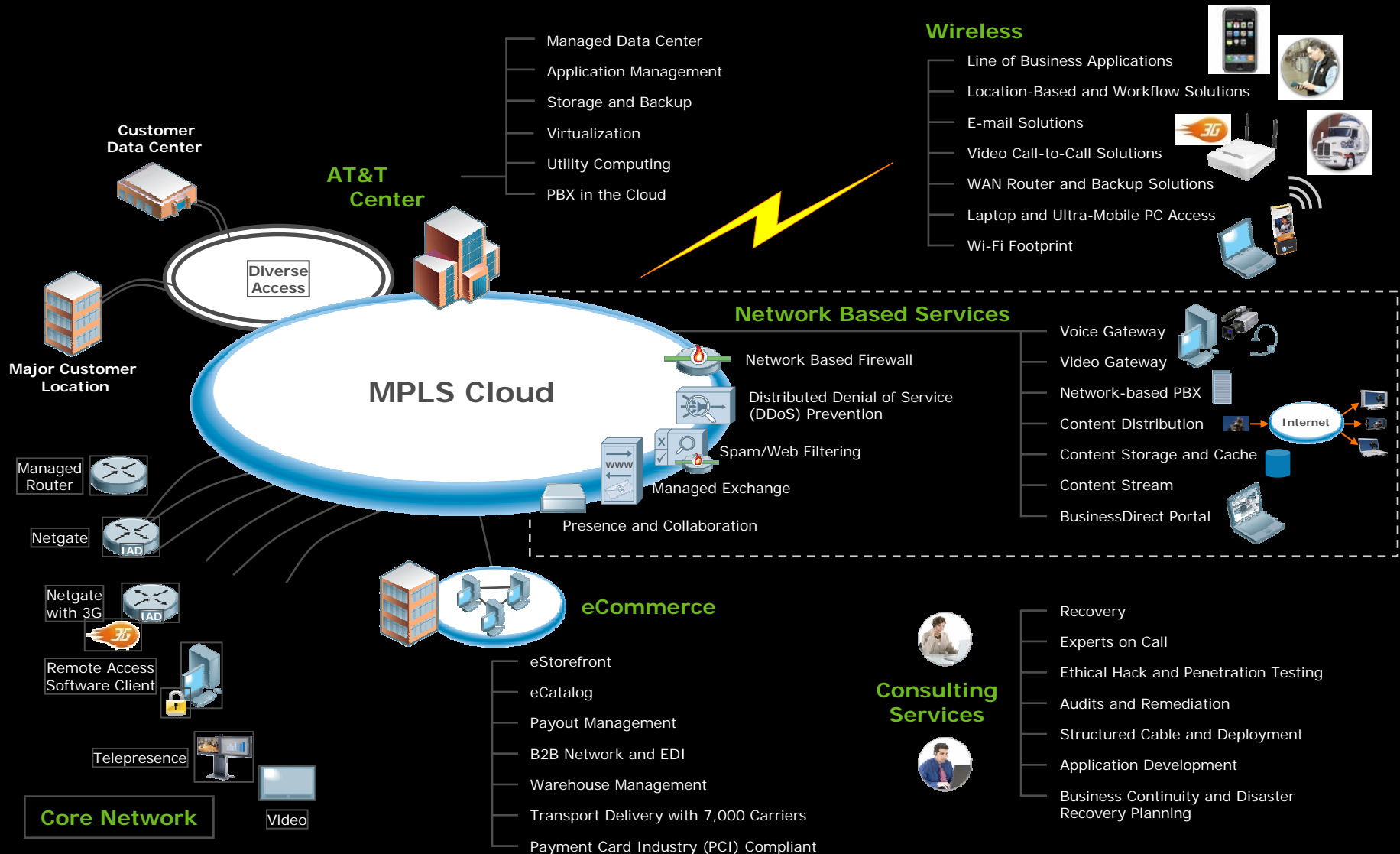
Endpoints

Network

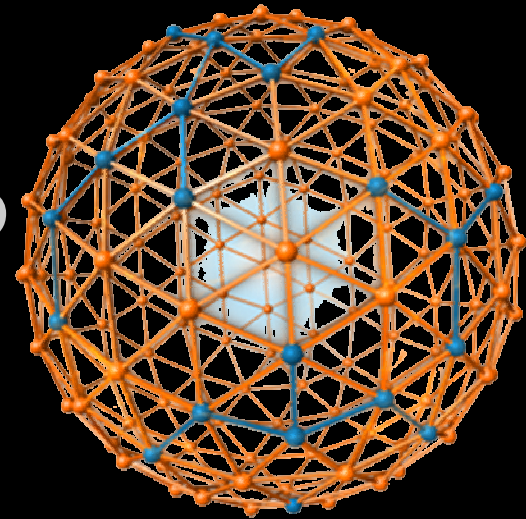
Services

Infrastructure & Services Investment Plans of Nearly **\$1B total** in 2009  
Approximately **\$3B** Will Have Been Invested 2006-2009

# 47 Ways AT&T Can Help Grow Your Business



# Questions ?



**Demand More. Do More.**  
**With AT&T Business Solutions**

---

[ajuhlin@emea.att.com](mailto:ajuhlin@emea.att.com)

+46 703415056