

Cisco – X.25 Local Switching

Table of Contents

<u>X.25 Local Switching</u>	1
<u>Introduction</u>	1
<u>Network Diagram</u>	1
<u>Configurations</u>	1
<u>Related Information</u>	2

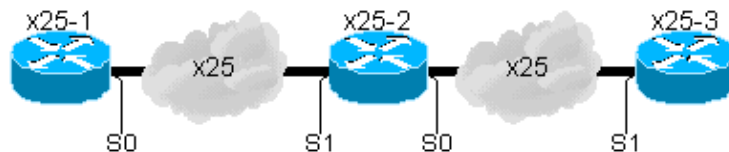
X.25 Local Switching

Introduction

X.25 is an International Telecommunication Union–Telecommunication Standardization Sector (ITU–T) protocol standard for WAN communications that defines how connections between user devices and network devices are established and maintained. It is typically used in the packet–switched networks (PSNs) of common carriers, such as the telephone companies.

Local switching (available in Cisco IOS®Software Release 11.1 and later) allows a single router to provide media conversion between Synchronous Data Link Control (SDLC) and Token Ring and between Qualified Logical Link Control (QLLC) and LAN. This is useful in environments that need simplified Systems Network Architecture (SNA) network design and improved availability.

Network Diagram



Configurations

x25-1

```
!  
interface Serial0  
 ip address 10.0.0.2 255.255.255.240  
 no ip mroute-cache  
 encapsulation x25  
 bandwidth 64  
 x25 address 1234  
 x25 map ip 10.0.0.1 4321 broadcast  
!
```

x25-2

```
!  
interface Serial0  
 no ip address  
 no ip mroute-cache  
 encapsulation x25 dce  
 bandwidth 64  
 clock rate 64000  
!  
interface Serial1  
 no ip address  
 no ip mroute-cache  
 encapsulation x25 dce  
 bandwidth 64  
 clock rate 64000  
!  
!  
x25 route ^4321 interface Serial0
```

```
x25 route ^1234 interface Serial1
!
```

x25-3

```
!
interface Serial1
 ip address 10.0.0.1 255.255.255.240
 no ip mroute-cache
 encapsulation x25
 bandwidth 64
 x25 address 4321
 x25 map ip 10.0.0.2 1234 broadcast
!
```

Related Information

- [Internetworking Design Basics](#)
- [X.25 Background](#)
- [DNS-Based X.25 Routing](#)
- [Configuring X.25 and LAPB](#)

All contents are Copyright © 1992—2001 Cisco Systems Inc. All rights reserved. Important Notices and Privacy Statement.

Updated: Apr 12, 2002

Document ID: 12500
