



Set Up Your Wireless LAN Controller Module

Home > Work With My Wireless Devices > Cisco Wireless Devices > Set Up Your Wireless LAN Controller Module

Step 4: Complete Initial Setup for the Cisco Wireless LAN Controller Module

- Step 1: [SMB Support Assistant Site Survey](#)
- Step 2: [Set Up Your Cisco Wireless LAN Controller Module Hardware](#)
- Step 3: [Configure Your Router for the Wireless LAN Controller Module](#)
- Step 4: Complete Initial Setup for the Cisco Wireless LAN Controller Module**
- [Introduction](#)
 - [Requirements](#)
 - [Configure the Controller](#)
 - [Record the WLCM Interface](#)
 - [Connect to the Router](#)
 - [Open a Session to the Wireless LAN Controller Module](#)
 - [Complete the Startup Wizard](#)
 - [Next Step](#)
 - [Troubleshoot the Procedure](#)
 - [Related Information](#)
- Step 5: [Configure the Cisco Wireless LAN Controller Module](#)
- Step 6: [Set Up a RADIUS Server for the Wireless LAN Controller Module](#)
- Step 7: [Add a Lightweight Access Point to Your Wireless Network](#)

Introduction

This document provides instructions to complete initial setup for your Cisco Wireless LAN Controller module (WLCM) installed in your Cisco 2800 and 3800 Integrated Services Router.

This document shows how to configure the WLCM solution with these subnets:

VLAN	IP Address
Wireless LAPs	192.168.14.0

Service Requests

[Open a service request](#)

[Update a service request](#)

Feedback

Download PDF

- [Step 4: Complete Initial Setup for the Cisco Wireless LAN Controller Module](#)
- [Set Up Your Wireless LAN Controller Module](#)

Please rate this document.

++ + +/- - --

This document solved my problem.

Yes No Just Browsing

Suggestions for improvement:

If Cisco may contact you for more details or for future feedback opportunities, please enter your contact information:

Full Name:

Email:

WLAN Controller Management	192.168.15.0
Wireless Default	192.168.16.0
Wireless Guest	192.168.17.0

If you want to set up a WLCM at more than one site, the [Wireless LAN Controller Module IP Addressing Plan](#) provides additional subnets that you can use for up to 30 sites. To set up an additional site, replace the VLAN subnets used in this document with the appropriate subnets for your site.

[Back to Top](#)

Requirements

To complete the initial setup for the Cisco Wireless LAN Controller, you need these items:

- The Cisco Wireless LAN Controller module installed into the Cisco Integrated Services Router.
- Completed worksheets from the [Site Survey](#):
 - LAN Addressing Worksheet
 - ISR Router Worksheet
- You must have completed the procedure in the [Set Up Your Cisco Wireless LAN Controller Module Hardware](#) document.
- You must have completed the initial configuration in the [Configure Your Router with Security Device Manager](#) document.

[Back to Top](#)

Configure the Controller

Follow these steps to complete initial setup configuration for the Cisco Wireless LAN Controller module:

Record the WLCM Interface

In order to connect to the WLCM, you need to verify the WLCM interface number on the router. Follow these steps to verify the WLCM interface number:

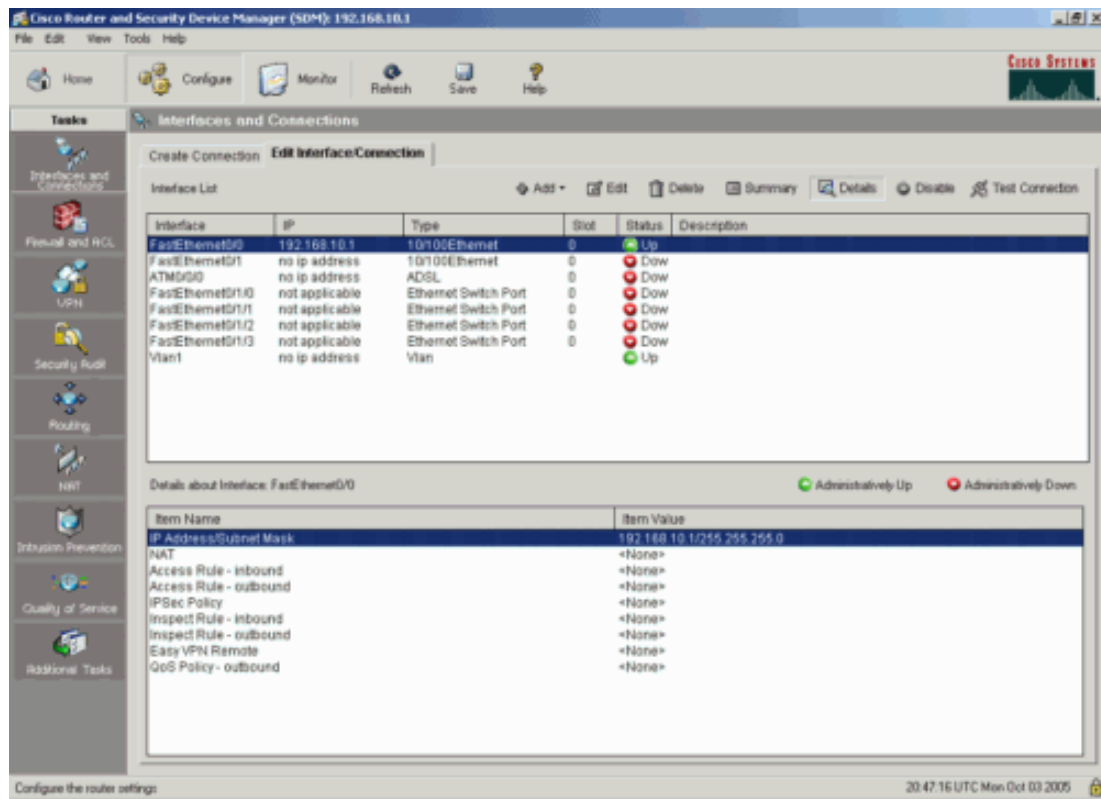
1. Connect to the router with SDM.

To connect to SDM, open a web browser, type **http://router IP address** in the Address field, and press **Enter**. The router's IP address is the IP address that you entered in the LAN Addressing Worksheet (L6A). For more information about how to connect to the router with SDM, refer to [Configure Your Router with Security Device Manager](#).

2. Open a web browser and type **http://router IP address** in the Address field. The router's IP address is the IP address that you entered in the LAN Addressing Worksheet (L6A). Press E
3. Click **Configure**.



4. Click **Interfaces and Connections**.
5. Click **Edit Interface/Connection**.



- Record the wlan-controller interface number in field B39 of the ISR Router worksheet. The interface number indicates the slot and port in which the WLCM is installed.
- Click **File > Exit** to exit SDM.

Connect to the Router

Before you can access the controller module command line interface (CLI), you need to connect to the router. Follow these steps to connect to the router with Telnet:

- Click **Start > Run**.
- In the Run dialog box, type **cmd** or **command**, and then click **OK** to open a command prompt window.
- At the command prompt, type **telnet router-ip-address** and press **Enter**. For **router-ip-address**, use the Router IP address that you entered in field L6A of the LAN Addressing Worksheet.
- Log into the router with the router password that you entered in field B11 of the Integrated Services Router Worksheet. For more information on how to access the router, refer to [Configure Your Router with Security Device Manager](#).

Open a Session to the Wireless LAN Controller Module

Once you connect to the router, you can open a session to the WLCM. Follow these steps to open a session to the controller:

1. Type **enable** and press **Enter** to go to the privileged mode. Type the enable password that you entered in field B12 of the Integrated Services Router Worksheet.

```
Router> enable
Router#
```

```
Router# configure terminal
Router(config)#
```

2. Type **interface wlan-controller *slot/port*** and press **Enter**. For ***slot/port***, use the slot and port number that you recorded in field B39 of the ISR Router worksheet.

```
Router(config)# interface wlan-controller 2/0
```

3. Type **ip address *router-ip-address* 255.255.255.0** and press **Enter**. For ***router-ip-address***, use the Management network IP address that you entered in field L6B of the Management VLAN Worksheet followed by **.1**.

```
Router(config-if)# ip address 192.168.15.1 255.255.255.0
```

4. Type **no shutdown** and press **Enter**.

```
Router(config-if)# no shutdown
```

5. Type **end** and press **Enter**.

```
Router(config-if)#end
Router#
```

6. Type **service-module wlan-controller *slot/port* session** and press **Enter**. For ***slot/port***, use the slot and port number that you recorded in field B39 of the ISR Router worksheet.

```
Router# service-module wlan-controller 2/0 session
```

Complete the Startup Wizard

The first time you connect to the Cisco Wireless LAN Controller with a factory default configuration, a startup wizard appears. Follow these steps to complete the startup wizard on the controller module:

Note: If the Cisco WLAN controller module has no prior configuration, the configuration wizard starts automatically.

1. The Cisco Wizard Configuration Tool prompt appears.

```
Welcome to the Cisco Wizard Configuration Tool
Use the '-' character to backup
```

2. For System Name, type the controller name that you entered in field W16 of the Wireless Worksheet and press **Enter**.

```
System Name {Cisco_33:52:ffffffa0}: NM-WLCM
```

3. For Administrative User Name, type the administrative user name that you entered in field W24 of the Wireless Worksheet and press **Enter**.

```
Enter Administrative User Name (24 characters max): admin
```

4. For Administrative Password, type the administrative password that you entered in field W25 of the Wireless Worksheet and press **Enter**.

```
Enter Administrative Password (24 characters max): * * * * *
```

5. For Management Interface IP address, type **192.168.15.24** and press **Enter**.

```
Management Interface IP Address: 192.168.15.24
```

6. For Management Interface Netmask, type **255.255.255.0** and press **Enter**.

```
Management Interface Netmask: 255.255.255.0
```

7. For Management Interface Default Router, enter **192.168.15.1** and press **Enter**.

```
Management Interface Default Router: 192.168.15.1
```

8. For Management Interface VLAN Identifier, press **Enter** to accept the default setting.

```
Management Interface VLAN Identifier (0 = untagged):
```

9. For Management Interface, press **Enter** to use the default Port Number.

```
Management Interface Port Num [1]:
```

10. For Management Interface DHCP Server IP Address, type **192.168.15.1** and press **Enter**.

Management Interface DHCP Server IP Address: **192.168.15.1**

11. For AP Manager Interface IP Address, type **192.168.15.25** and press **Enter**.

AP Manager Interface IP Address: **192.168.15.25**

12. For the AP Manager Interface DHCP Server, press **Enter** to use the same DHCP server as the Management Interface.

AP Manager Interface DHCP Server (192.168.15.1):

13. For Virtual Gateway IP Address, type **1.1.1.1** and press **Enter**.

Virtual Gateway IP Address: **1.1.1.1**

14. For Mobility/RF Group Name, type **default** and press **Enter**.

Mobility/RF Group Name: **default**

15. For Network Name, type the SSID that you entered in field W26 of the Wireless Worksheet and press **Enter**.

Network Name (SSID): **smb**

16. For Allow Static IP Addresses, type **no** and press **Enter**.

Allow Static IP Addresses [YES][no]:

17. For Configure a RADIUS Server Now, type **no** and press **Enter**. The controller displays a security policy warning.

Warning! The default WLAN security policy requires a RADIUS server.
Please see documentation for details.

Note: Instructions to configure the RADIUS server are provided later in this procedure.

18. Type your country code and press **Enter**.

Enter Country Code (enter 'help' for a list of countries) [US]:

19. Press **Enter** to enable the 802.11b network.

```
Enable 802.11b Network [YES][no]:
```

20. Press **Enter** to enable the 802.11a network.

```
Enable 802.11a Network [YES][no]:
```

21. Press **Enter** to enable the 802.11g network.

```
Enable 802.11g Network [YES][no]:
```

22. Press **Enter** to enable Auto-RF.

```
Enable Auto-RF [YES][no]:
```

23. For Configure a NTP Server Now, type **no** and press **Enter**.

Note: Instructions to configure the NTP server are provided later in this procedure.

```
Configure a NTP server now? [YES][no]: no
```

24. Press **Enter** to configure the system time.

```
Configure the system time now? [YES][no]:
```

25. Enter the month, date and year in the specified format.

```
Enter the date in MM/DD/YY format: 10/05/06
```

26. Type the time in the specified format and press **Enter**.

```
Enter the time in HH:MM:SS format: 19:06:50
```

27. At the Configuration Correct prompt, type **Yes** and press **Enter** to save the configuration .

```
Configuration correct? If yes, system will save it and reset. [yes][NO]: yes
```

```
Configuration saved!
```

```
Resetting system with new configuration... Configuration saved!
```

28. The WLCM boots with the new configuration.

```

Initializing memory. Please wait. 256 MB SDRAM detected
BIOS Version: SM 02.00
BIOS Build date: 09/17/02
System Now Booting ...

```

```

Booting from disk..., please wait.

```

```

Cisco Bootloader Loading stage2...

```

```

Cisco Bootloader (Version 3.2.116.21)

```

```

.o88b. d8888888b .d8888. .o88b. .d88b.
d8P Y8 `88' 88' YP d8P Y8 .8P Y8.
8P      88  `8bo. 8P      88  88
8b      88  `Y8b. 8b      88  88
Y8b d8 .88. db 8D Y8b d8 `8b d8'
`Y88P' Y888888P `8888Y' `Y88P' `Y88P'

```

```

Booting Primary Image...

```

Note: If you want to return to the router CLI, press **Control + Shift + 6**, followed by **x**.

[Back to Top](#)

Next Step

You have completed this procedure. To configure the controller module, proceed to [Configure the Cisco Wireless LAN Controller](#).

To make further changes to your wireless network, refer to the [Wireless Support Page](#).

To configure other devices in your network, refer to the [Configuration Overview Page](#).

[Back to Top](#)

Troubleshoot the Procedure

This section provides information about common problems that you may encounter. If this information does not solve your problem, contact the [SMB Technical Assistance Center \(SMB TAC\)](#) for assistance.

Problem	Cause(s) and Suggested Solution(s)
I cannot connect to the Router through Telnet.	Refer to Configure Your Router to Support SDM and check whether telnet access is configured properly.
I cannot connect to the Controller module.	Make sure you type the correct slot and port number when you connect to the Controller module installed into the Router with the service-module wlan-controller slot/port session command.
I cannot exit the WLCM session.	Press Control + Shift + 6 , followed by x to return to the router CLI.

[Back to Top](#)

Related Information

- [Site Survey](#)
- [Set Up Your Cisco Wireless LAN Controller Module Hardware](#)