



# Save and Recover Your Router Configuration

Home > Work With My Routers > Cisco Routers > Save and Recover Your Router Configuration

## Save and Recover Your Router Configuration

[Introduction](#)

[Requirements](#)

[Save Your Configuration](#)

[Launch SDM](#)

[Save the Running Configuration to Your PC](#)

[Load an Existing Configuration](#)

[Identify Configuration to Load](#)

[Connect to the Router](#)

[Set Router IP Address](#)

[Update the PC IP Address](#)

[Copy the Configuration to the Router](#)

[Next Step](#)

[Troubleshoot the Procedure](#)

[Related Information](#)

### Introduction

This document explains how to save and recover the configuration for your Cisco router. If you want to configure your router for the first time, refer to [Configure Your Router with Security Device Manager](#).

[Back to Top](#)

### Requirements


You need the following items to use this document:

- You must have completed the [Site Survey](#) and configured the router.
- TFTP server software. If your PC does not have TFTP server software installed, refer to [Set Up a TFTP Server](#) for further instructions.
- Approximately 1 hour of network downtime
- A crossover cable. For further assistance refer to [Cable Descriptions](#).
- A console cable. For further assistance refer to [Cable Descriptions](#).
- A PC with a Pentium III or higher processor
- Windows 98 (second edition) or later

**Note:** Windows 2000 Advanced Server is not supported.

- One of these web browsers:

- Netscape version 7.1 or later.
- Internet Explorer version 5.5 or later.

**Note:** If you are using the Java plugin, you need to use SUN Java Runtime Environment (JRE) version 1.4.2\_05. For information about how to update your version of JRE refer to [java.sun.com](#) .

[Back to Top](#)

### Save Your Configuration

#### Launch SDM

To launch SDM, open **http:// router IP address** in a web browser. Use the router IP address you entered in the LAN Addressing Worksheet (L6A). For further information about how to launch SDM, refer to [Configure Your Router with Security Device Manager](#).

#### Save the Running Configuration to Your PC

If you want to save a backup copy of your router configuration to your PC, follow these steps:

#### Service Requests

[Open a service request](#) 

[Update a service request](#) 

#### Feedback

Please rate this site:

++ + +/- - --

Suggestions for improvement:

If Cisco may contact you for more details or for future feedback opportunities, please enter your contact information:

Full

Name:

Email:

#### Download PDF

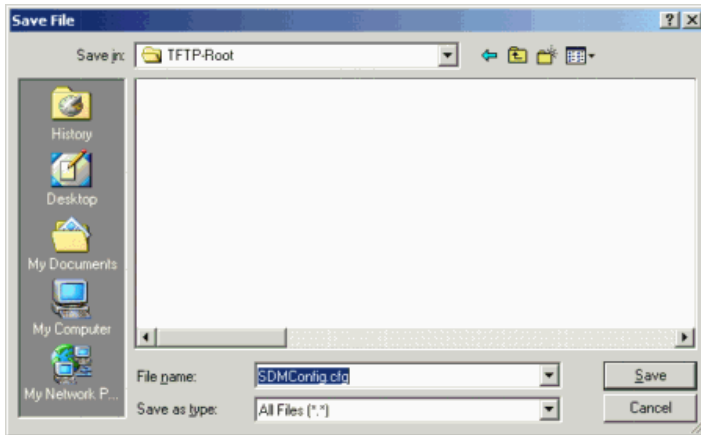


[Save and Recover Your Router Configuration](#)

1. Click **File > Save Running Config to PC**.



2. Browse to your TFTP download directory and open the folder.
3. Change the file extension from **.txt** to **.cfg**.



4. Click **Save**.
5. Click **File > Exit** to exit SDM.

[Back to Top](#)

---

## Load an Existing Configuration

To load an existing configuration onto your router, follow these steps:

**Note:** This procedure will disrupt your network and may disrupt your connection to the router.

### Identify Configuration to Load

Locate the configuration file that you want to upload to the router and verify that the configuration file is in the TFTP download folder of the PC.

### Connect to the Router

To connect to your router, follow these steps:

1. Open a terminal connection to your router. For more information about how to create a terminal connection, refer to [Create a HyperTerminal Connection](#).
2. Log into the router. The default login is username cisco, password cisco. Otherwise, use the administrator login and password you entered in the Internet Worksheet (B10 and B11).

```
Username: cisco
Password:
```

**Note:** If you do not know the password for your router, refer to [Recover the Password for your Router](#).

### Set Router IP Address

To set the IP address on the router, follow these steps:

1. Type **enable** and press **Enter** to access the privileged mode. If you have set an enable password, use the password that you entered in the Internet Worksheet (B12).

```
Router> enable
```

```
Router#
```

2. Type **configure terminal** and press **Enter** to access configuration mode.

```
Router#configure terminal
Router(config)#
```

3. Type **interface FastEthernet0** and press **Enter** to configure the Ethernet interface.

**Note:** The name of the Ethernet interface varies with some router models. Review the table to confirm the name for the Ethernet interface on your router. For example, if your router interface lists Ethernet0, enter the command **interface Ethernet0**.

Router Model	First Ethernet Interface
SOHO	Ethernet0
800 Series	Ethernet0
1760	FastEthernet0/0
1700 Series	FastEthernet0
1800	FastEthernet0/0
2600 Series	FastEthernet0/0
2800	FastEthernet0/0

```
Router(config-if)#interface FastEthernet0
Router(config-if)#
```

4. Type **ip address 10.0.0.1 255.255.255.0** and press **Enter**.

```
Router(config-if)#ip address 10.0.0.1 255.255.255.0
```

5. Type **no shutdown** and press **Enter** to make the interface active.

```
Router(config-if)#no shutdown
```

6. Type **end** and press **Enter** to leave configuration mode.

```
Router(config)#end
Router#
```

7. Type **write memory** and press **Enter** to save the configuration.

```
Router(config)#write memory
Building configuration...
[OK]
```

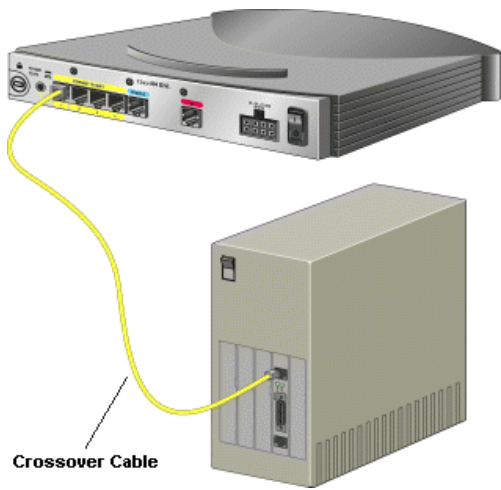
8. Leave the terminal session open and minimize the terminal window.

### Update the PC IP Address

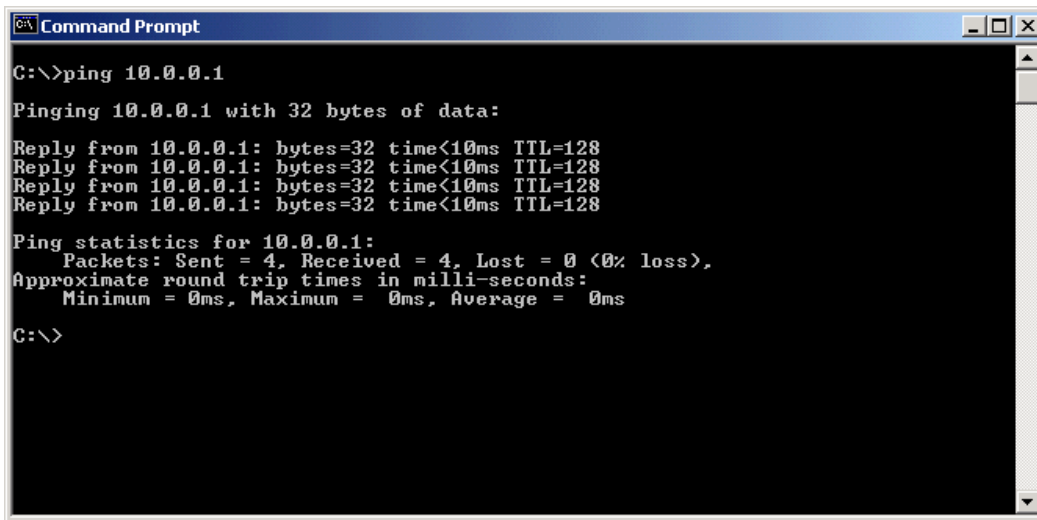
To verify the connection between your PC and the router, follow these steps:

1. Change your PC IP address to 10.0.0.1 with subnet mask 255.255.255.0. To change your PC IP address, go to **Control Panel > Network and Dial-Up Connections > TCP/IP Properties**. For further information about how to configure an IP address on your PC, refer to [Configure an IP Address on Your PC](#).
2. Connect the Ethernet interface of your PC to the Ethernet interface of the router with a crossover cable. For more information about cables, refer to [Cable Descriptions](#).

**Note:** Leave the management cable connected to the console port of the router.



- Use a ping test to verify that your PC can send traffic to the router. Go to **Start > Run** and type **command** or **cmd** to launch a DOS prompt. Type **ping 10.0.0.1** and press **Enter**. The example shows a successful ping test. For more information about how to do a ping test, refer to [Troubleshoot Ethernet Connectivity](#).



- Type **exit** and press **Enter** to exit the command prompt.

### Copy the Configuration to the Router

To copy the configuration file to your router, follow these steps:

- Launch the TFTP Server application.
- Restore the HyperTerminal window.
- Type **copy tftp://10.0.0.2/SDMConfig.cfg flash:** and press **Enter**. Press **Enter** again to confirm the destination filename.

**Note:** If your configuration file has a different name, use the name of your configuration file in place of SDMConfig.cfg.

```

Router#copy tftp://10.0.0.2/SDMConfig.cfg flash:
Destination filename [config.text]?

```

- The router displays a message similar to the example when it accesses the file:

```

Accessing tftp://10.0.0.2/SDMConfig.cfg...

```

- If the router prompts you to erase flash, type **n** so that you do NOT erase flash and press **Enter**.

```

Erase flash: before copying? [confirm]n

```

- The router displays a message similar to the example when the copy begins:

```

Loading //tftp-root/SDMConfig.cfg from 10.0.0.2 (via FastEthernet0): !!!!!
!!!!!!!!!!!!!!!!!!!!!!!!!!!!!!!!!!!!!!

```

- When the copy is complete, type **copy flash:SDMConfig.cfg start** and press **Enter**. Press **Enter** again to confirm the destination filename.

**Note:** If your configuration file has a different name, replace SDMConfig.cfg with the name of your configuration file.

```
Router#copy flash:SDMConfig.cfg start
Destination filename [startup-config]?
```

8. Type **reload** and press **Enter** to reboot the router with the new configuration. Press **Enter** again to confirm.

```
Router#reload
Proceed with reload? [confirm]
```

9. Change your PC settings to obtain an IP address automatically from the router. Go to **Control Panel > Network and Dial-Up Connections > TCP/IP Properties** and choose **Obtain an IP Address Automatically**. For more detailed instructions on how to set your PC to obtain an IP address automatically, refer to [Configure an IP Address on Your PC](#).

10. Close the TFTP Server application.

[Back to Top](#)

---

## Next Step

You have now loaded a configuration on your router. If you want to make changes to the configuration on your router, refer to [Configure Your Router with Security Device Manager](#).

To make further changes to your router, refer to the [Router Support Page](#).

To configure other devices in your network, refer to the [Configuration Overview Page](#).

[Back to Top](#)

---

## Troubleshoot the Procedure

Problem	Cause(s) and Suggested Solution(s)
I do not see the SDM login prompt.	<ul style="list-style-type: none"><li>SDM may not be installed on your router. Refer to <a href="#">Download Security Device Manager</a> for further assistance.</li><li>Your Ethernet interface may be down. Refer to <a href="#">Configure your Router with Security Device Manager</a> for assistance.</li></ul>
The router does not accept my login.	If you are unable to log in, you need to create a privileged username and password for your router. Refer to <a href="#">Download Security Device Manager</a> for further assistance.
I loaded the new configuration but I cannot reconnect to the router with SDM.	Refer to <a href="#">Configure your Router with Security Device Manager</a> .

[Back to Top](#)

---

## Related Information

- [Cable Descriptions](#)
- [Configure an IP Address on Your PC](#)
- [Download Security Device Manager](#)
- [Site Survey](#)
- [Configure your Router with Security Device Manager](#)