



# Modify Your Router Configuration with Security Device Manager

[Home](#) > [Work With My Routers](#) > [Cisco Routers](#) > [Modify Your Router Configuration with Security Device Manager](#)

## Modify Your Router Configuration with Security Device Manager

[Introduction](#)

[Requirements](#)

[Launch SDM](#)

[Configure the Ethernet Interface](#)

[Configure the Router Default Gateway](#)

[Save Your Configuration](#)

[Save Running Configuration to Startup Configuration](#)

[Save the Running Configuration to Your PC](#)

[Reset the Router to the Default Configuration](#)

[Update Router Properties](#)

[Set Router Host Name](#)

[Set Domain Name](#)

[Set Router Banner](#)

[Set Time Server](#)

[Update Router Access](#)

[Set the Enable Secret Password](#)

[Create or Modify a User Account](#)

[Set VTY Password](#)

[Prepare for SSH access](#)

[Next Step](#)

[Troubleshoot the Procedure](#)

[Related Information](#)

## Introduction

This document explains how to update and manage your router configuration with Cisco Security Device Manager (SDM).

### Service Requests

[Open a service request](#)

[Update a service request](#)

### Feedback

Please rate this site:

++   +   +/-   -   --

Suggestions for improvement:

### Download PDF



[Modify Your  
Router  
Configuration with  
Security Device  
Manager](#)

If Cisco may contact you for more details or for future feedback opportunities, please enter your contact information:

Full  
Name:

Email:

**Note:** If you need to configure your router for the first time, refer to [Configure Your Router with Security Device Manager](#).

[Back to Top](#)

---

## Requirements

To perform the steps described in this document, you need to have these items:

- A [crossover Ethernet cable](#)
- A [console cable](#)
- A PC with a Pentium III or higher processor
- Windows 2000 or XP

**Note:** Windows 2000 Advanced Server is not supported.

- One of these web browsers:
  - Netscape version 7.1 or later.
  - Internet Explorer version 5.5 or later.

**Note:** If you are using the Java plugin, you need to use SUN Java Runtime Environment (JRE) version 1.4.2\_05. For information about how to update your version of JRE, refer to [Sun](#)

[Microsystems](#) .

- Completed worksheets as instructed in the [Site Survey](#), which includes the LAN Addressing worksheet.

[Back to Top](#)

---

## Launch SDM

To start SDM, follow these steps:

Open a web browser and type **http://router IP address** in the Address field. The router's IP address is the IP address that you entered in the LAN Addressing Worksheet (L6A).

**Note:** For further information about how to launch SDM, refer to [Configure Your Router with Security Device Manager](#).

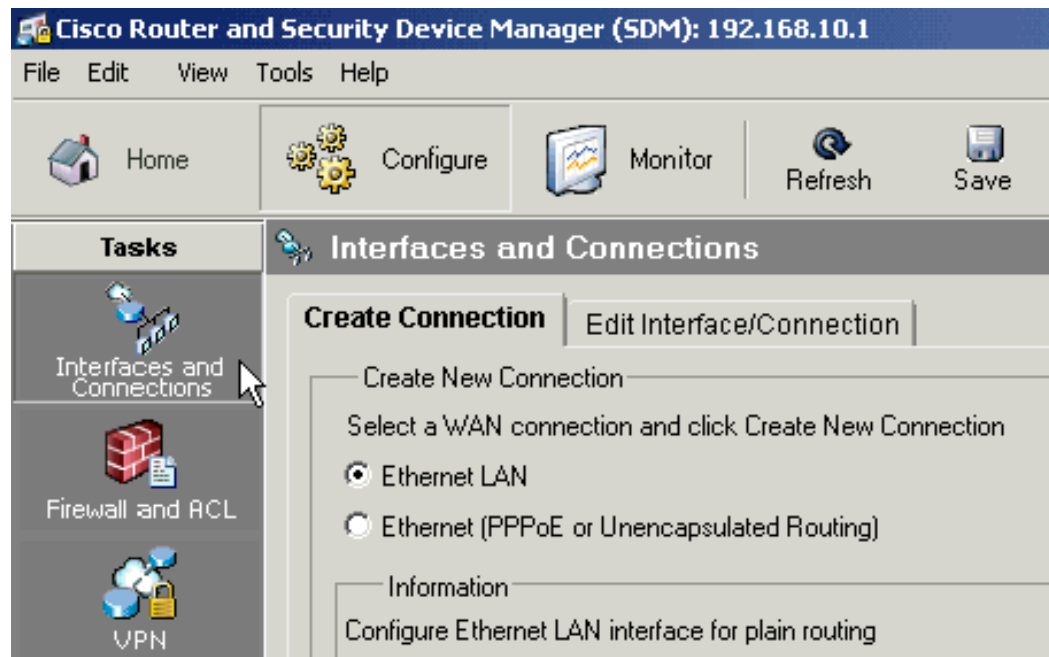
[Back to Top](#)

---

## Configure the Ethernet Interface

To configure the Ethernet interface on the router, follow these steps:

1. Click **Interfaces and Connections**.



2. Click the **Edit Interface/Connection** tab.

**Cisco Router and Security Device Manager (SDM): 192.168.10.1**

File Edit View Tools Help

Home Configure Monitor Refresh Save

**Tasks**

- Interfaces and Connections
- Firewall and ACL
- VPN

**Interfaces and Connections**

Create Connection **Edit Interface/Connection**

Interface List

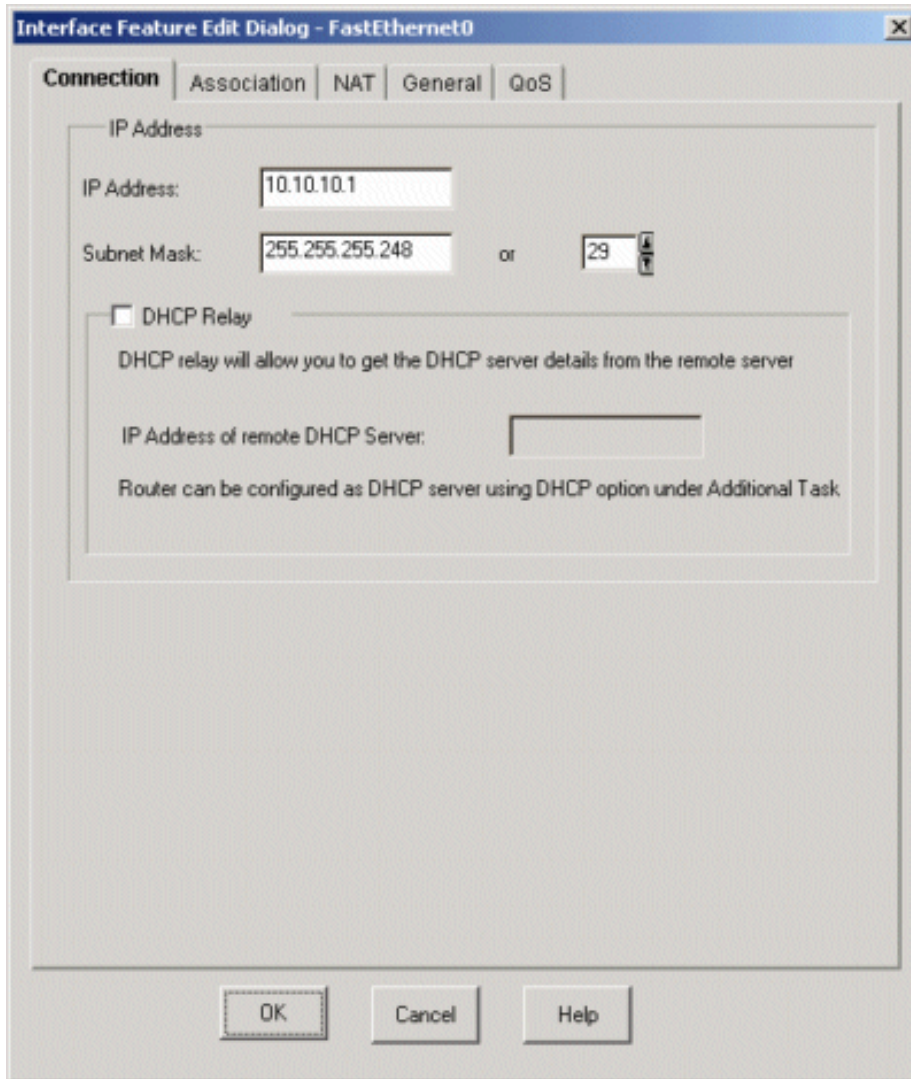
Interface	IP	Type
Ethernet0	no ip address	Ethernet
Ethernet1	no ip address	Ethernet
FastEthernet0	192.168.10.1	10/100Ethernet

3. Double-click the FastEthernet interface to edit the settings. Use this table to determine the correct Ethernet interface to open for your router.

Router Model	First Ethernet Interface
SOHO	Ethernet0
800 Series	Ethernet0
1760	FastEthernet0/0
1700 Series	FastEthernet0
1800	FastEthernet0/0
2600 Series	FastEthernet0/0

2800	FastEthernet0/0
------	-----------------

4. Enter the IP address and subnet mask for your router (from fields L6A and L1A on the LAN Addressing Worksheet). You can make other configuration changes in the Feature Edit window, if necessary.



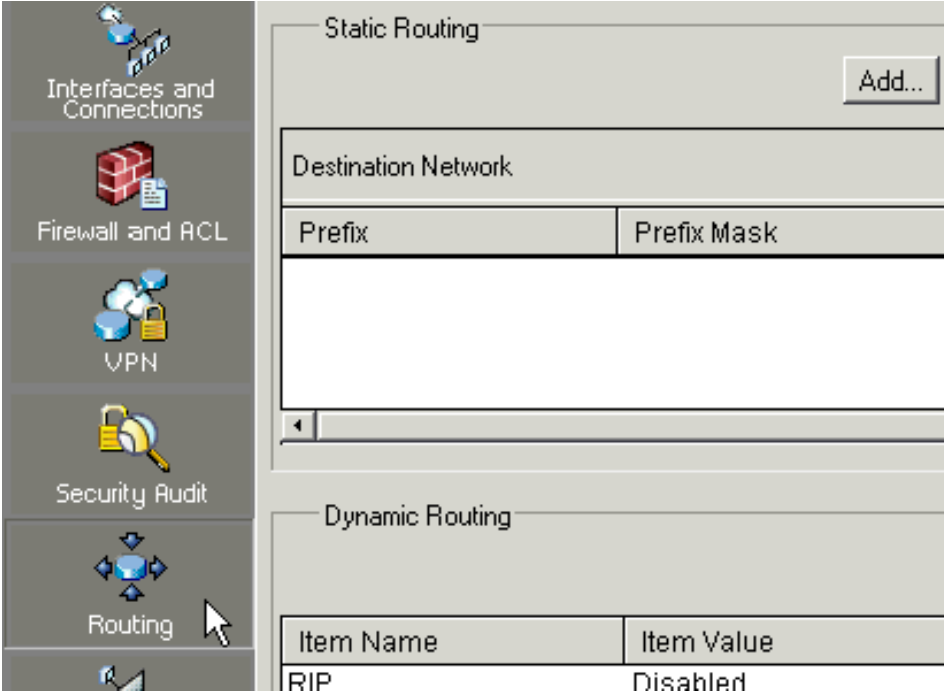
5. Click **OK** to confirm the changes.
6. Click **File > Write to Startup Config** to save your new configuration.

[Back to Top](#)

## Configure the Router Default Gateway

To change the default gateway on your router, follow these steps:

1. Click **Routing**.



The screenshot shows the Cisco configuration interface. On the left sidebar, the 'Routing' option is selected and highlighted with a mouse cursor. The main content area is divided into two sections: 'Static Routing' and 'Dynamic Routing'.

**Static Routing**

Destination Network

Prefix	Prefix Mask

**Dynamic Routing**

Item Name	Item Value
RIP	Disabled

2. Click **Add**.
3. Check the **Make this as the default route** check box.

**Add IP Static Route**

Destination Network

Prefix:

Prefix Mask:

Make this as the default route

Forwarding( Next Hop )

Interface:

IP Address:

Optional

Distance metric for this route:

Permanent route

OK Cancel Help

4. Choose the **IP Address** option and enter the IP address of your ISP default gateway (field B47).
5. Click **OK** to confirm the route.
6. Click **File > Write to Startup Config** to save your new configuration.

[Back to Top](#)

---

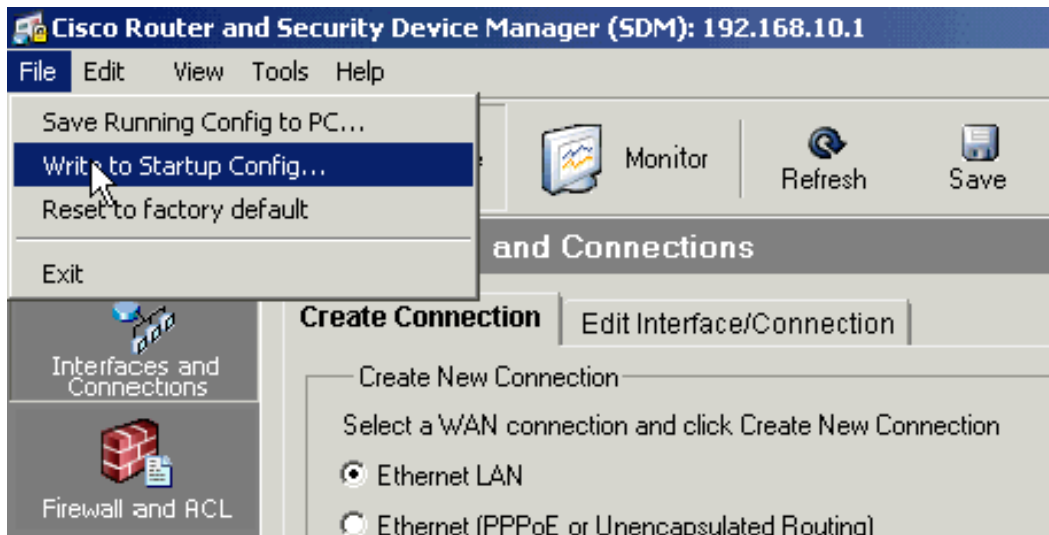
## Save Your Configuration

Follow these steps to save your router configuration:

### Save Running Configuration to Startup Configuration

If you make changes to your router configuration, you need to save the running configuration to the startup configuration. It is important to save your configuration to ensure that your router uses the new configuration when the router boots.

To save the running configuration to the startup configuration, click **File > Write to Startup Config**.

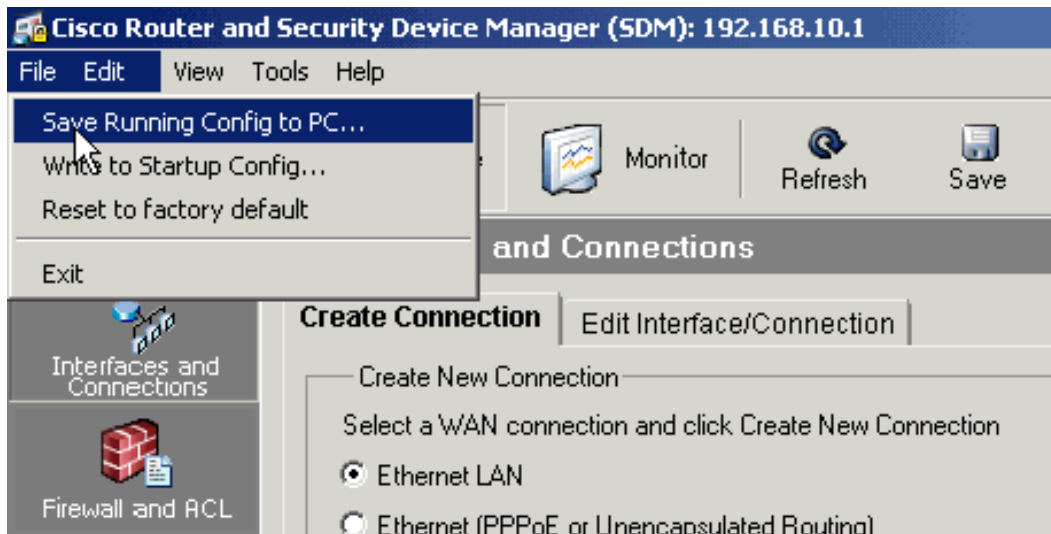


**Note:** You can also use the Save icon to save your configuration.

### Save the Running Configuration to Your PC

If you want to make a backup copy of the running configuration on your router, you can save a copy of the configuration file to your PC.

To save a copy of your current router configuration to your PC, click **File > Save Running Config to PC**.



**Note:** You can also use the Save icon to save your configuration.

[Back to Top](#)

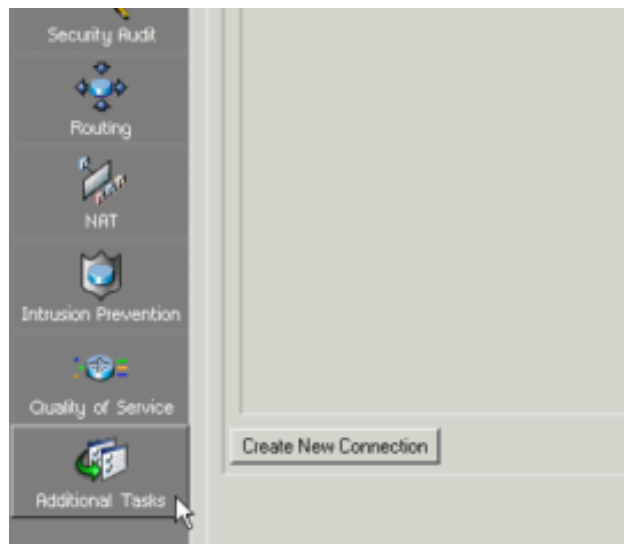
---

## Reset the Router to the Default Configuration

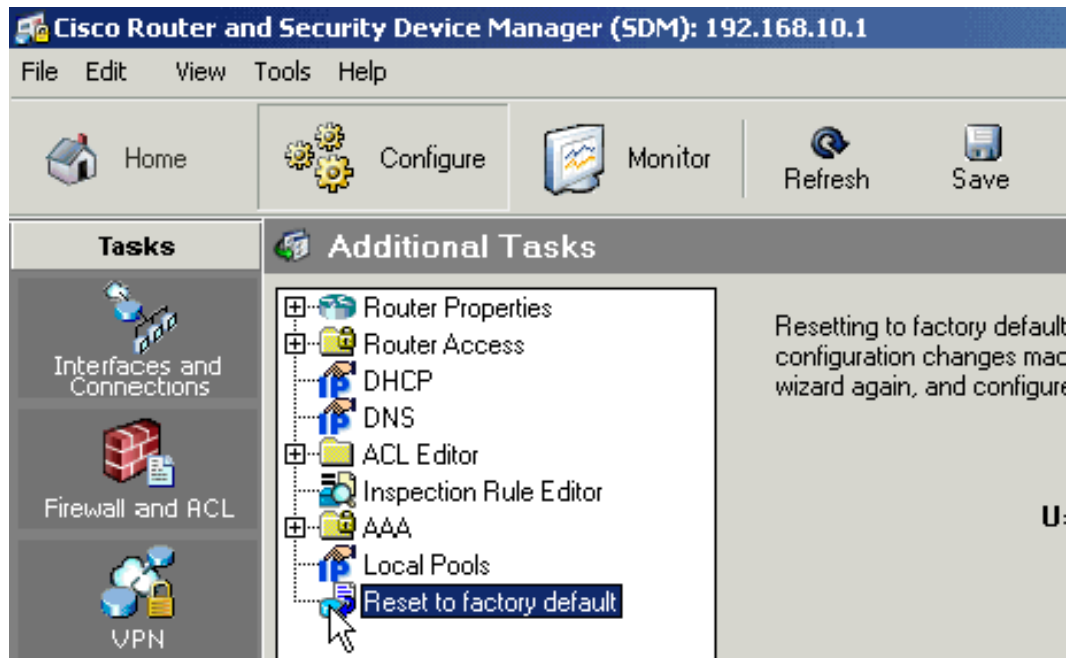
If you want to remove a previous configuration and reconfigure your router, you can reset your router to a default configuration. To reset your router to a default configuration, follow these steps:

**Note:** This procedure will delete your current configuration and replace it with a factory default configuration.

1. Click **Additional Tasks**.



2. Click **Reset to Factory Default**.



3. Under Step 1, enter the location on your computer where you want to store the current router configuration.
4. Click **Reset Router**.
5. Change your PC's IP address to 10.0.0.2 with a subnet mask of 255.255.255.248. For further

information about how to configure an IP address on your PC, refer to [Configure an IP Address on Your PC](#).

6. Open a web browser and type **http://10.10.10.1** in the Address field.
7. Log into SDM with the username "cisco" and password "cisco".

[Back to Top](#)

---

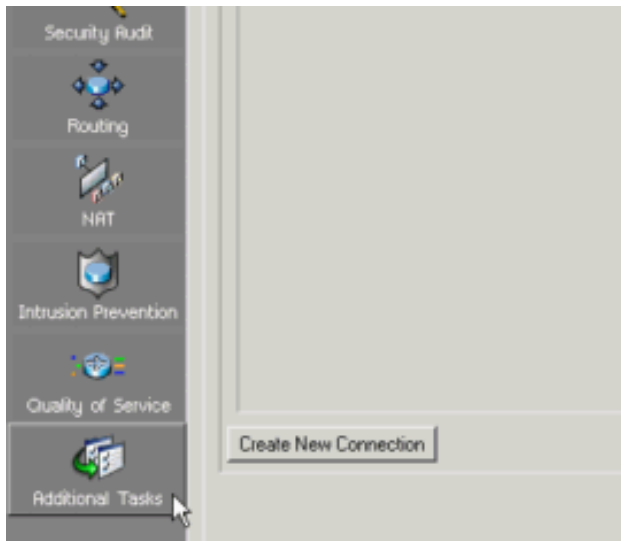
## Update Router Properties

Follow these steps to update the router properties:

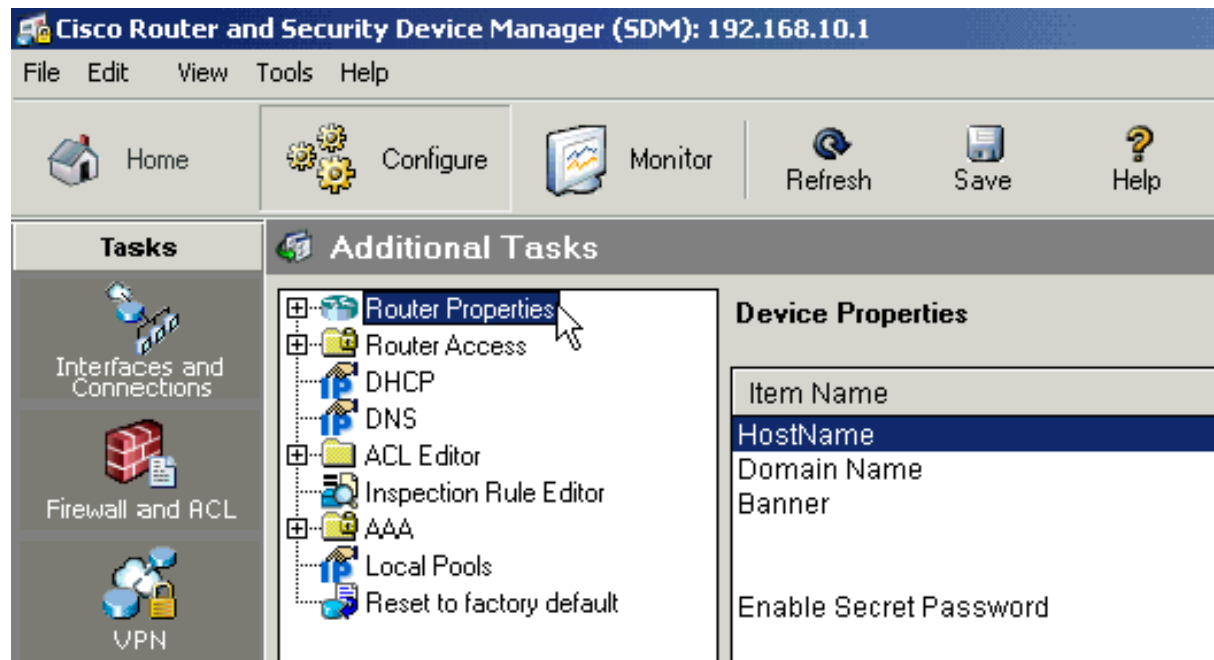
### Set Router Host Name

The host name is the unique name for your router. To set the router's host name, follow these steps:

1. Click **Additional Tasks**.



2. Double-click **Router Properties**, and then double-click **HostName**.



3. Update the host name and click **OK**.

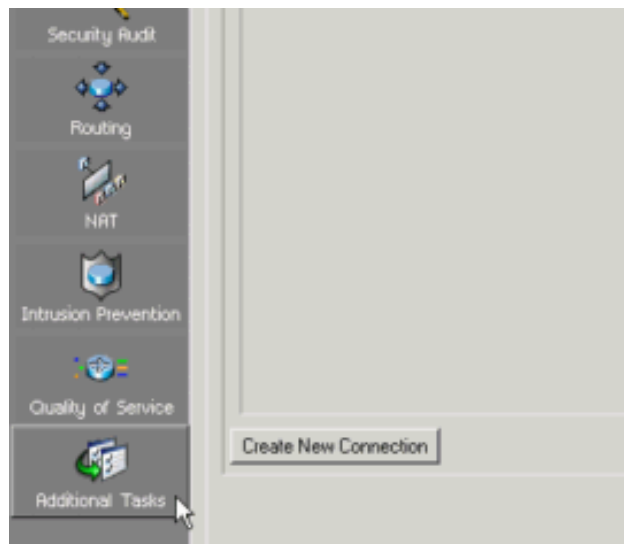
**Note:** You can also update the domain and router banner from this screen.

4. Click **File > Write to Startup Config** to save your new configuration.

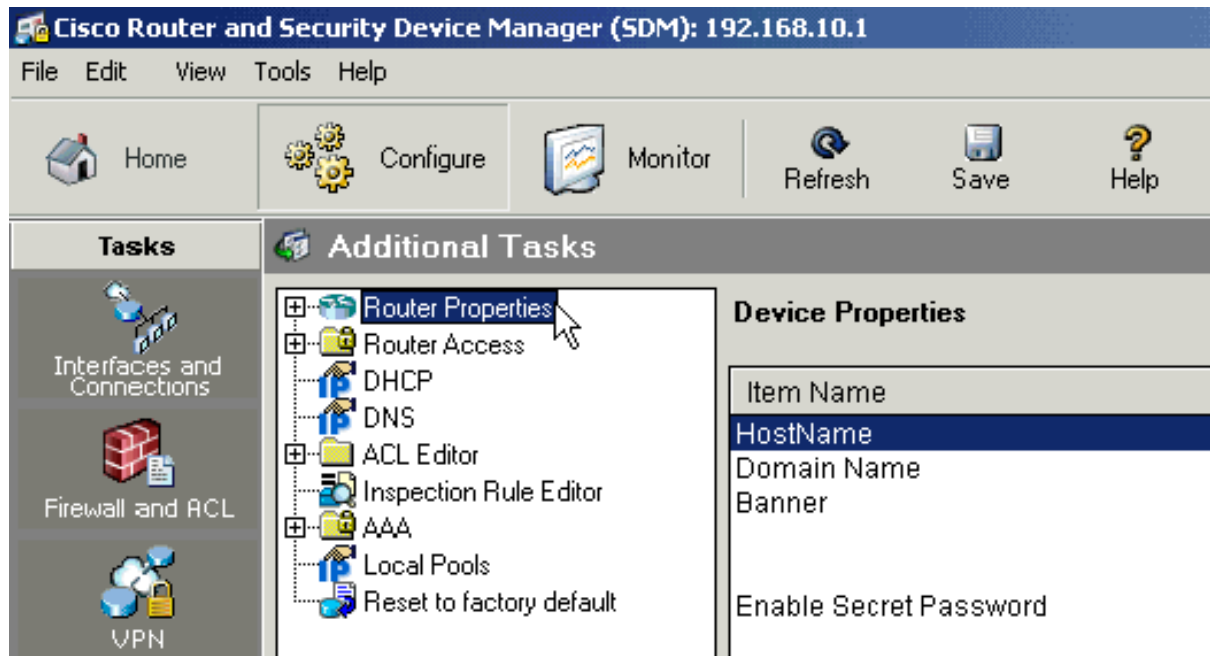
### Set Domain Name

The domain name specifies the domain name of your organization. To set the a domain name, follow these steps:

1. Click **Additional Tasks**.



2. Double-click **Router Properties**, and then click **Domain Name**.

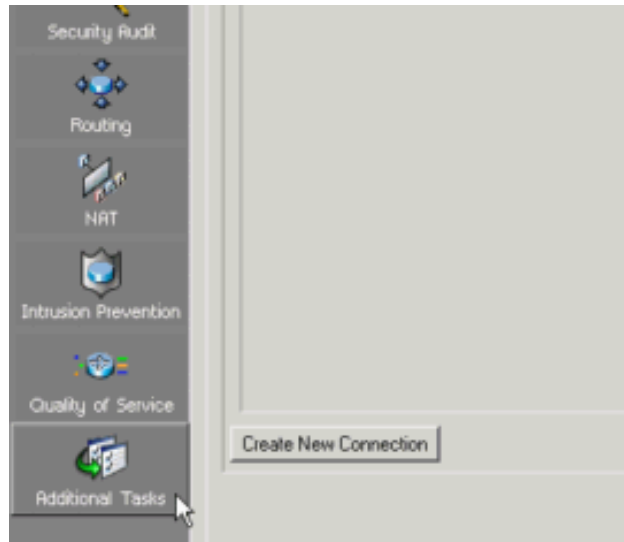


3. Enter the domain name for your organization. If your organization does not have a domain name, you can leave this field blank.
4. Click **File > Write to Startup Config** to save your new configuration.

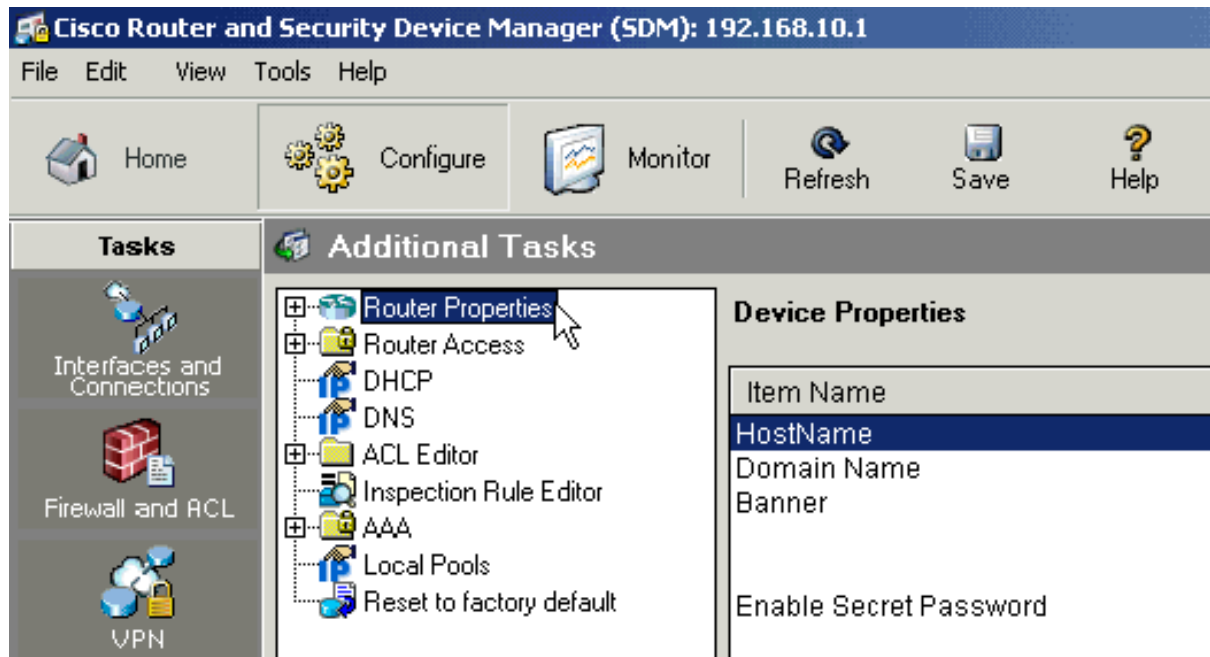
## Set Router Banner

The router text banner displays a message to all users that log into the router. Cisco recommends a text banner with a message to indicate that unauthorized access is prohibited. To set a router banner, follow these steps:

1. Click **Additional Tasks**.



2. Double-click **Router Properties**, and then click **Banner**.

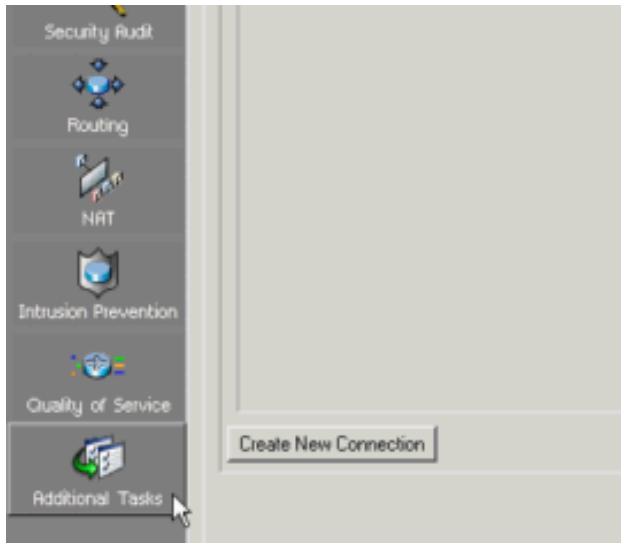


3. Enter the banner text that you want the router to display.
4. Click **File > Write to Startup Config** to save your new configuration.

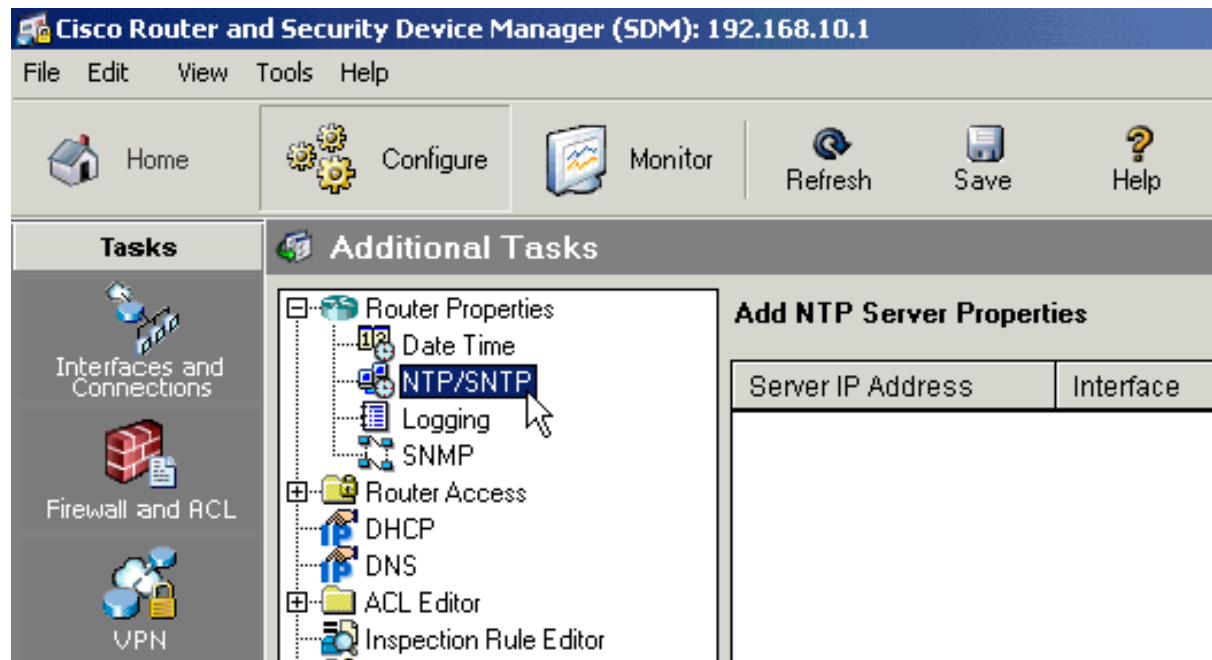
## Set Time Server

A time server ensures that your router has the correct time. To configure a time server, follow these steps:

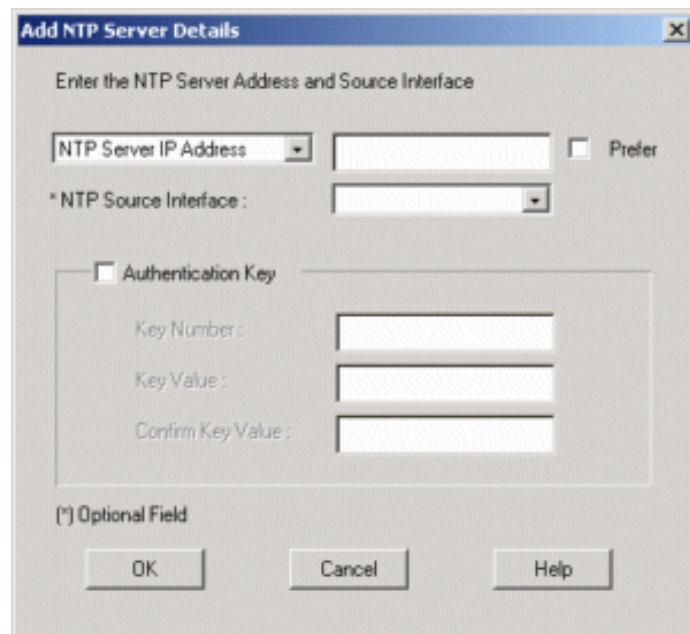
1. Click **Additional Tasks**.



2. Double-click **Router Properties**, and then click **NTP/SNTP**.



3. Click **Add**.
4. Choose **SNTP Server IP Address** and enter **192.43.244.18**.



**Note:** You can also choose **SNTP Server Hostname** and enter **time.nist.gov**. Your router must have

an active Internet connection to use a host name.

5. Click **OK**.
6. Click **File > Write to Startup Config** to save your new configuration.

[Back to Top](#)

---

## Update Router Access

Follow these steps to update access to the router:

### Set the Enable Secret Password

The enable secret password allows you to control who can modify the configuration on your router. Cisco strongly recommends that you set an enable secret password. For recommendations on how to implement strong passwords, refer to [Password Security](#).

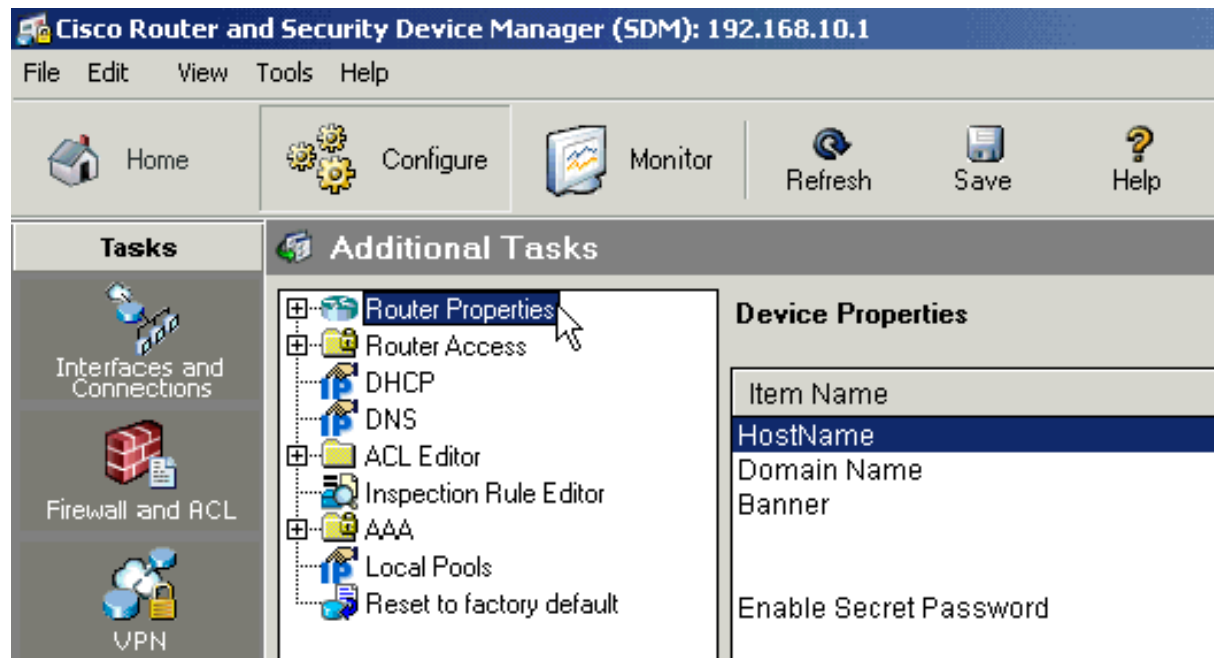
**Note:** Be sure that you document your password for future reference.

To set an enable secret password, follow these steps:

1. Click **Additional Tasks**.



2. Double-click **Router Properties**.



3. Click **Enable Secret Password**.
4. Enter the new password and click **OK**.
5. Click **File > Write to Startup Config** to save your new configuration.

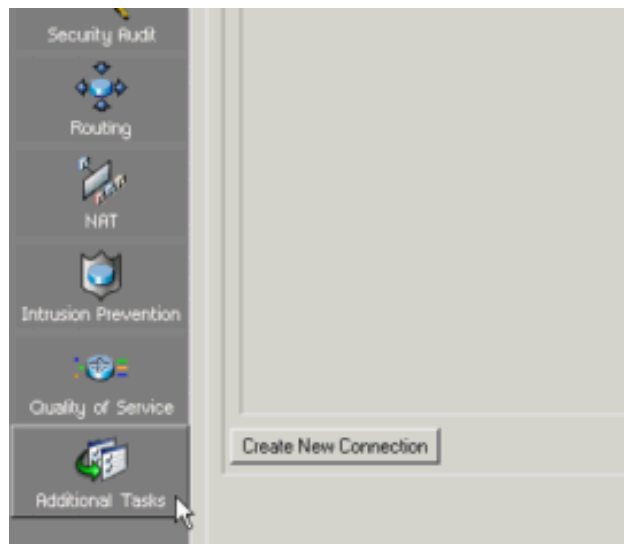
### Create or Modify a User Account

You can create user accounts with different privilege levels to manage the router. Use one of these privilege levels:

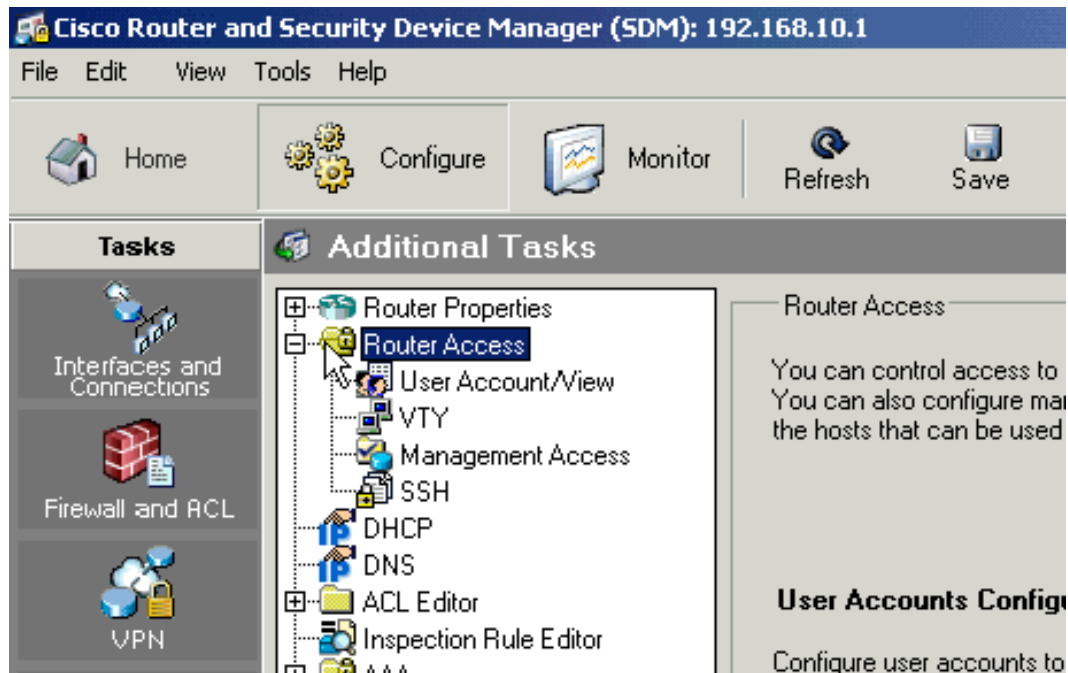
- Privilege level 1: Non-privileged access. Level 1 users can view information about the router but cannot modify the router configuration.
- Privilege level 15: Privileged access. Level 15 users can modify the router configuration.

To create or modify a user account, follow these steps:

1. Click **Configure** and choose **Additional Tasks**.



2. Double-click **Router Access**, and then click **User Account/View**.

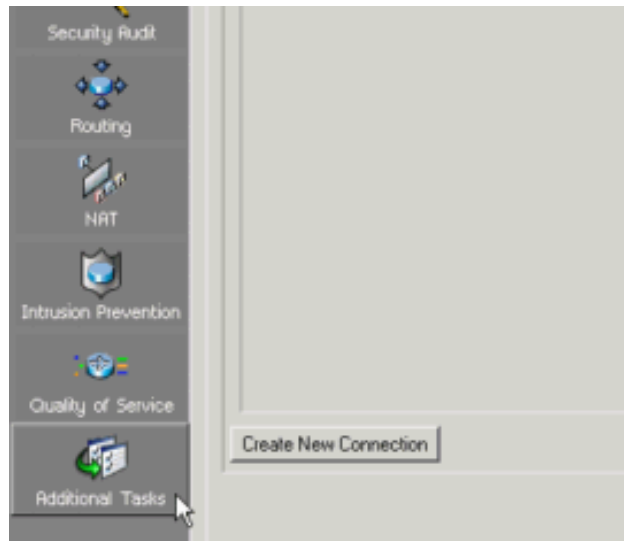


3. Click **Add** to add a new user. To edit or remove a user, select the user and click **Remove** or **Delete**.
4. Click **File > Write to Startup Config** to save your new configuration.

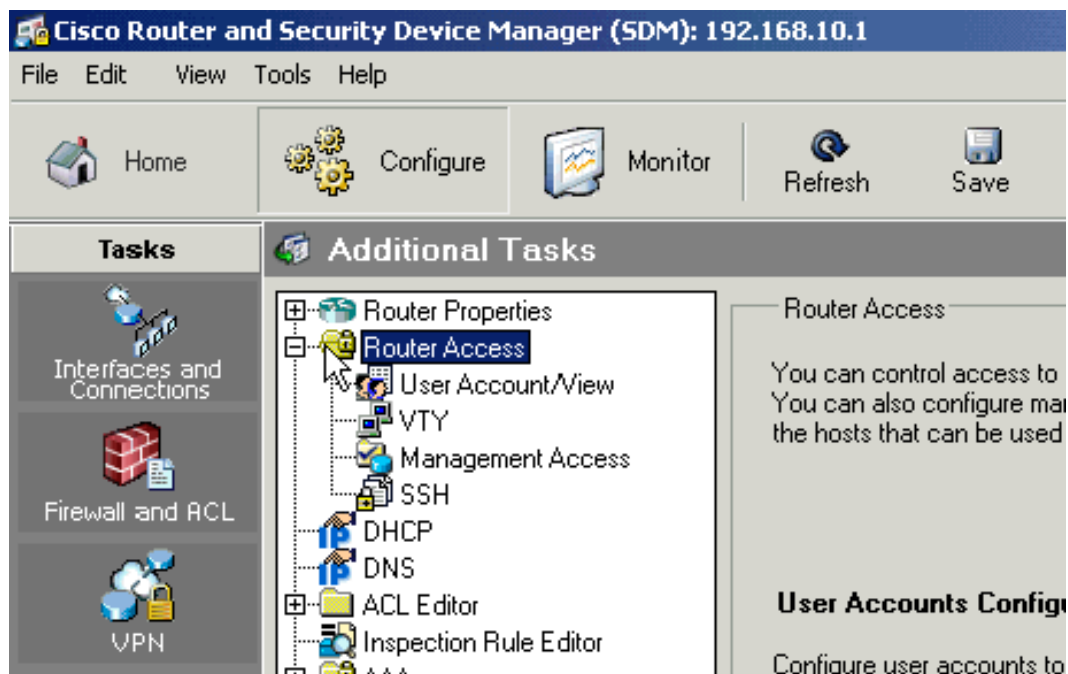
### Set VTY Password

Virtual Terminal (VTY) settings allow external access to the router with Telnet and Secure Shell (SSH). To set a VTY password, follow these steps:

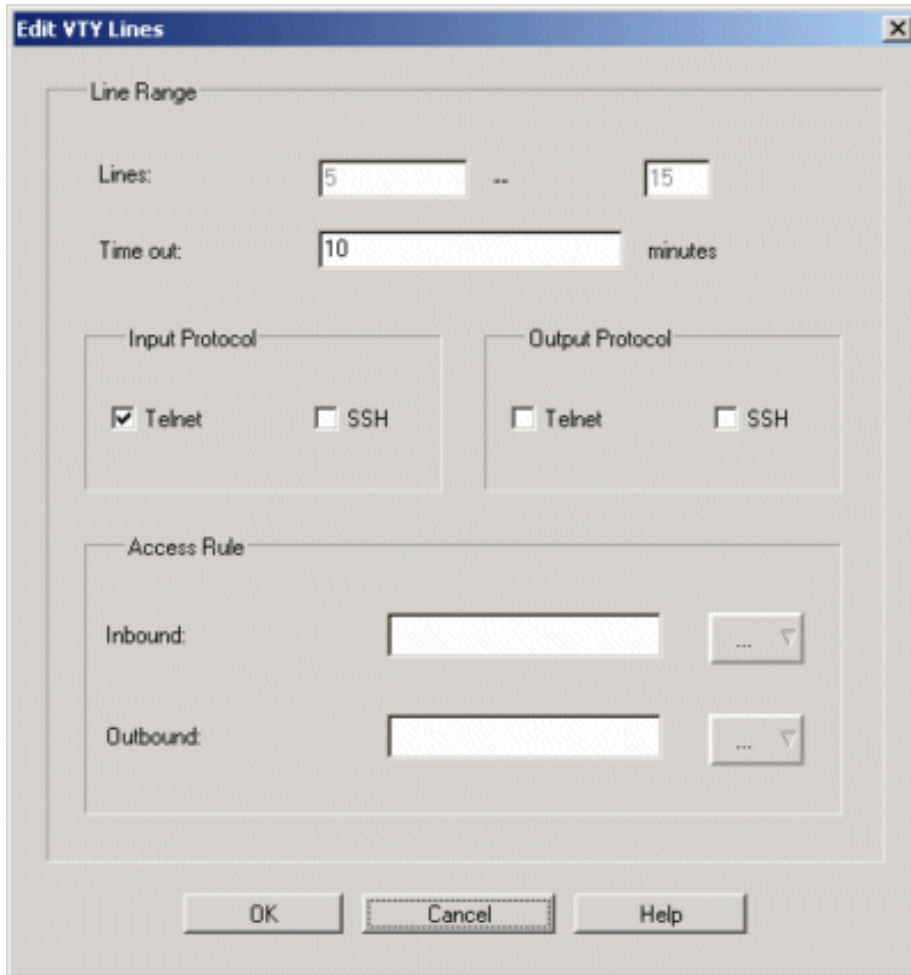
1. Click **Configure** and choose **Additional Tasks**.



2. Double-click **Router Access**, and then click **VTY**.



3. Click **Edit** to modify the VTY settings.
4. Check the input and output properties that you want to enable.

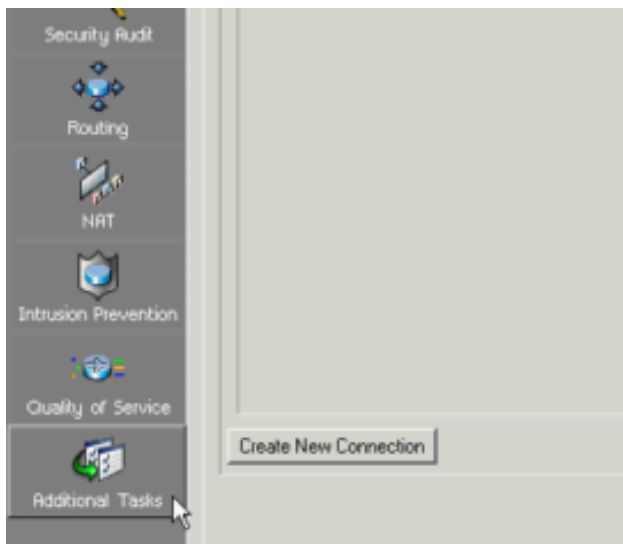


5. Click **OK** to complete the changes.
6. Click **File > Write to Startup Config** to save your new configuration.

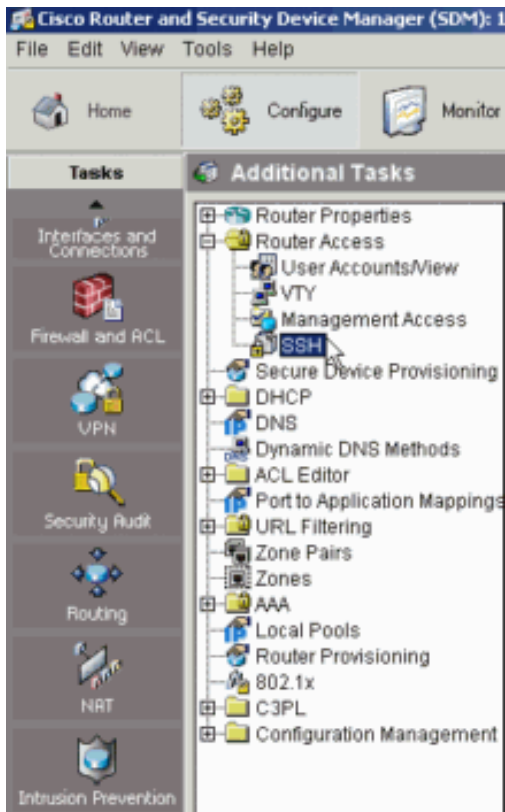
### Prepare for SSH access

SSH provides a secure connection to the device. To enable SSH access follow these steps

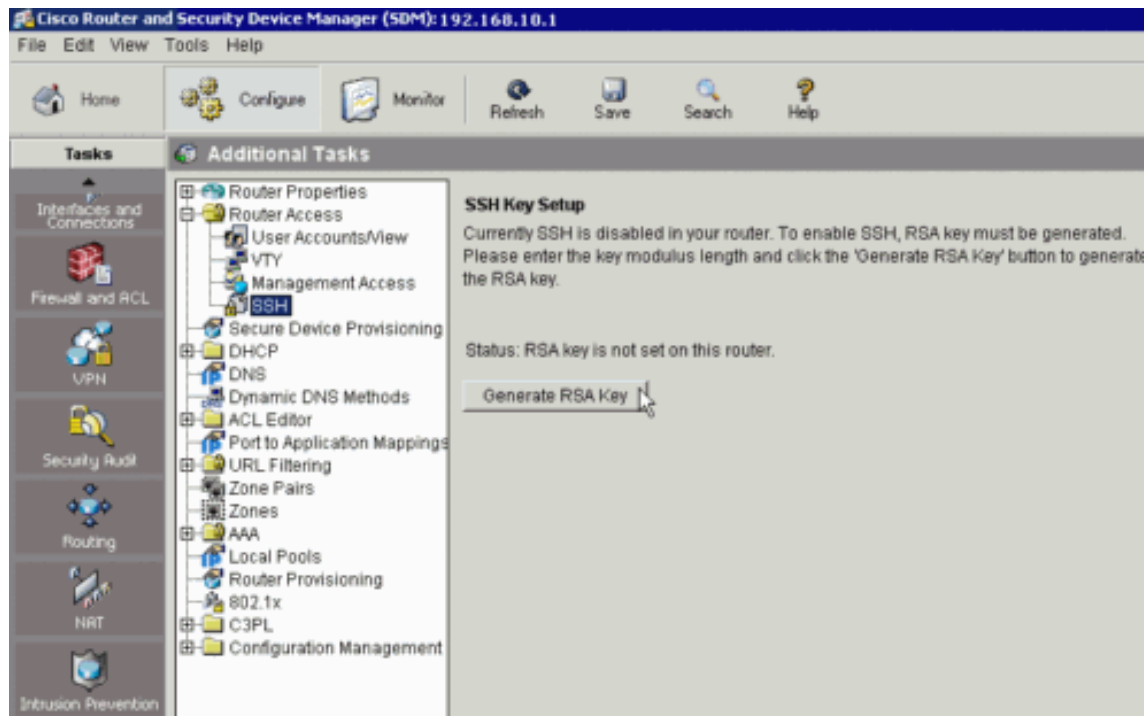
1. Click **Configure > Additional Tasks**.



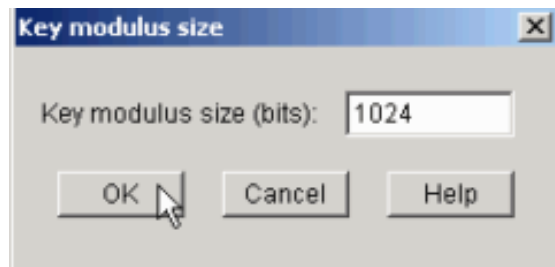
2. Click **Router Access > SSH**.



3. Click **Generate RSA Key**



4. Enter the key modulus size eg. 512, 1024 etc (more is better), and click **OK**.



5. Enter SSH username and password and click **OK**.



6. Click **File > Write to Startup Config** to save your new configuration.

[Back to Top](#)

---

## Next Step

You have now modified your router configuration.

To make further changes to your router, refer to the [Router Support Page](#).

To configure other devices in your network, refer to the [Configuration Overview Page](#).

[Back to Top](#)

---

## Troubleshoot the Procedure

This section provides information about common problems that you may encounter. If this information does not solve your problem, contact the [SMB Technical Assistance Center \(SMB TAC\)](#) for assistance.

Problem	Cause(s) and Suggested Solution(s)

I do not see a login prompt.	<ul style="list-style-type: none"><li>• SDM may not be installed on your router. Refer to <a href="#">Download and Install Security Device Manager</a> for further assistance.</li><li>• Your Ethernet interface may be down. Refer to <a href="#">Troubleshoot Ethernet Connectivity</a> for assistance.</li></ul>
I cannot log in with the default username and password.	If you are unable to log in, you need to create a privileged username and password for your router. Refer to <a href="#">Download and Install Security Device Manager</a> for further assistance.

[Back to Top](#)

---

## Related Information

- [Troubleshoot Ethernet Connectivity](#)
- [Download and Install Security Device Manager](#)
- [Configure Your Router with Security Device Manager](#)
- [Cable Descriptions](#)
- [Configure an IP Address on Your PC](#)
- [Create a HyperTerminal Connection](#)