



Set Up Your Cisco Router

Home > [Work With My Routers](#) > [Cisco Routers](#) > Set Up Your Cisco Router

Step 6: Add or Remove a Wireless User on an Integrated Services Router

- Step 1: [SMB Support Assistant Site Survey](#)
- Step 2: [Set Up Your 800 or SB 100 Router Hardware](#)
[Set Up Your 1700 Series Router Hardware](#)
[Set Up Your 1800 Series Router Hardware](#)
[Set Up Your 2600 Series Router Hardware](#)
[Set Up Your 2800 Series Router Hardware](#)
[Set Up Your 3800 Series Router Hardware](#)
- Step 3: [Download and Install Security Device Manager](#)
- Step 4: [Configure Your Router with Security Device Manager](#)
- Step 5: [Configure Wireless Security on an Integrated Services Router \(ISR Only\)](#)
- Step 6: Add or Remove a Wireless User on an Integrated Services Router (ISR Only)**
[Introduction](#)
[Requirements](#)
[Connect to the Router](#)
[Add a New Wireless User](#)
[Remove a Wireless User](#)
[Next Step](#)
[Troubleshoot the Procedure](#)
[Related Information](#)
- Step 7: [Set Up an ADSL Internet Connection](#)
[Set Up an Ethernet Internet Connection](#)
[Set Up an ISDN Internet Connection](#)
[Set Up a T1, E1, or Serial Internet Connection](#)
- Step 8: [Set Up Internet Security on a Cisco Router](#)

Introduction

This document describes how to add or remove a wireless user on a Cisco Integrated Services Router.

Service Requests

[Open a service request](#)

[Update a service request](#)

Feedback

Please rate this document.

++ + +/- - --

Download PDF

- [Step 6: Add or Remove a Wireless User on an Integrated Services Router](#)
- [Set Up Your Cisco Router](#)

This document solved my problem.

Yes No Just Browsing

Suggestions for improvement:

If Cisco may contact you for more details or for future feedback opportunities, please enter your contact information:

Full
Name:

Email:

[Back to Top](#)

Requirements

To perform the steps described in this document, you need to have these items:

- Completed ISR Router Worksheet as instructed in the [Site Survey](#)
- A [crossover Ethernet cable](#) to connect the router to a PC
- You must have completed [Configure Wireless Security on an Integrated Services Router](#)

[Back to Top](#)

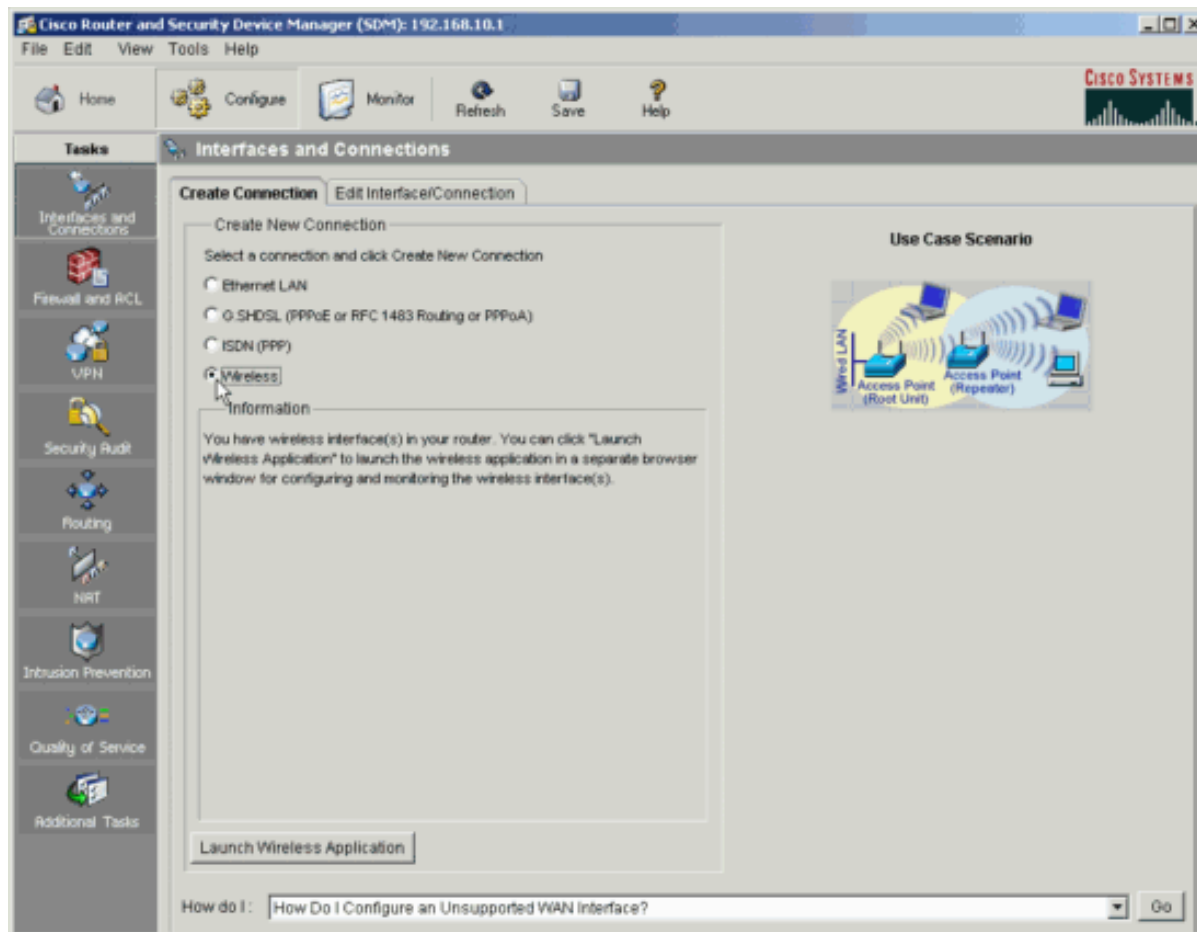
Connect to the Router

To connect to the ISR wireless management interface, follow these steps:

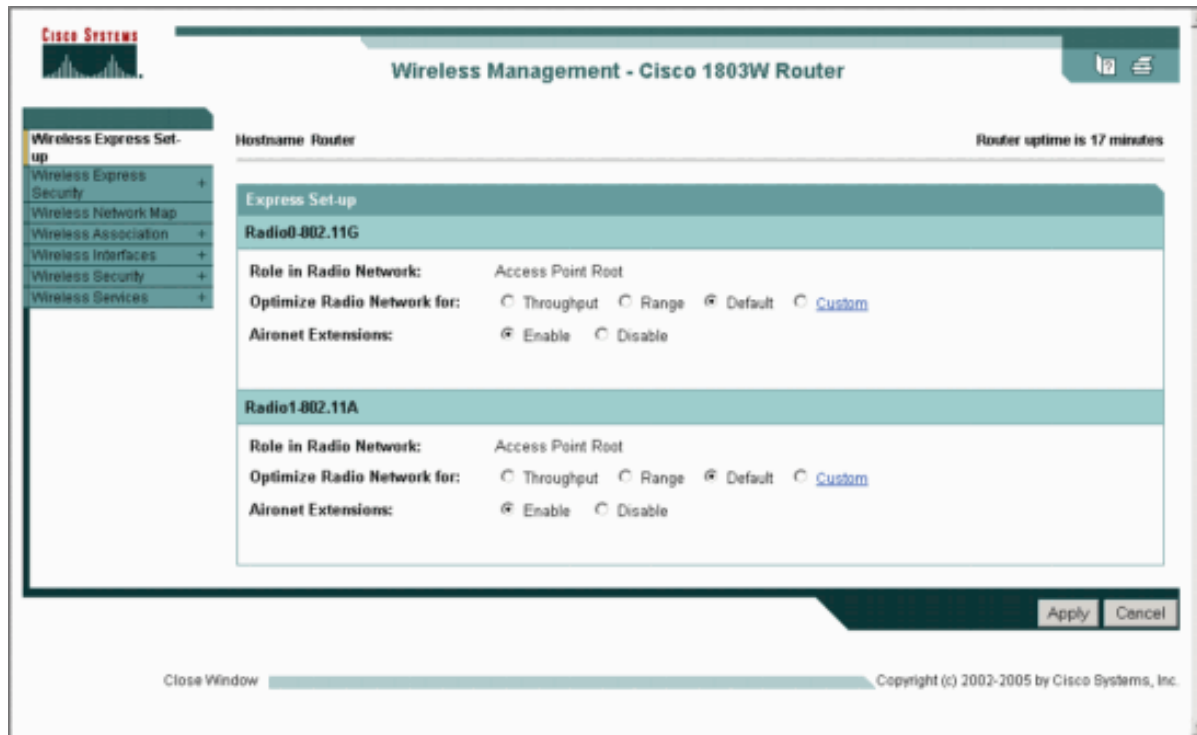
1. Connect your PC to the router with a [crossover Ethernet cable](#).
2. Configure your PC with an IP address that is on the same subnet as the AP. For instructions on how to change your PC Internet settings, refer to [Configure an IP Address on Your PC](#).
3. Open a web browser and enter the router IP address that you entered in field W10 of the Integrated Services Router Worksheet.
4. At the login prompt, enter the router password that you entered in field B11 of the Integrated Services Router Worksheet.
5. Click **Configure**.



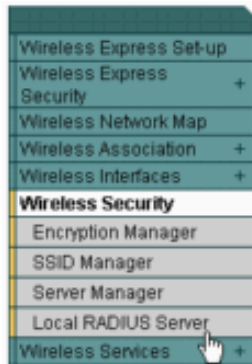
6. In the **Create Connection** tab, select **Wireless** and click **Launch Wireless Application**.



7. The wireless application launches in a separate window.



8. Click **Wireless Security > Local RADIUS Server**.



9. Click the **General Setup** tab.

10. Scroll to the **Individual Users** area of the screen.



< NEW >

Delete

Network Access Server: (IP Address)

Shared Secret:

Apply

Cancel

Individual Users

Current Users

< NEW >

ejones
tmorrison

Delete

Username:

Password:

Text NT Hash

Confirm Password:

Group Name:

MAC Authentication Only

Apply

Cancel

User Groups

Current User Groups

< NEW >

Default

Delete

Group Name:

Session Timeout (optional): (1-4294967295 sec)

Failed Authentications before Lockout (optional): (1-4294967295)

Lockout (optional):

Infinite

Interval (1-4294967295 sec)

VLAN ID (optional):

SSID (optional):

Add

Delete



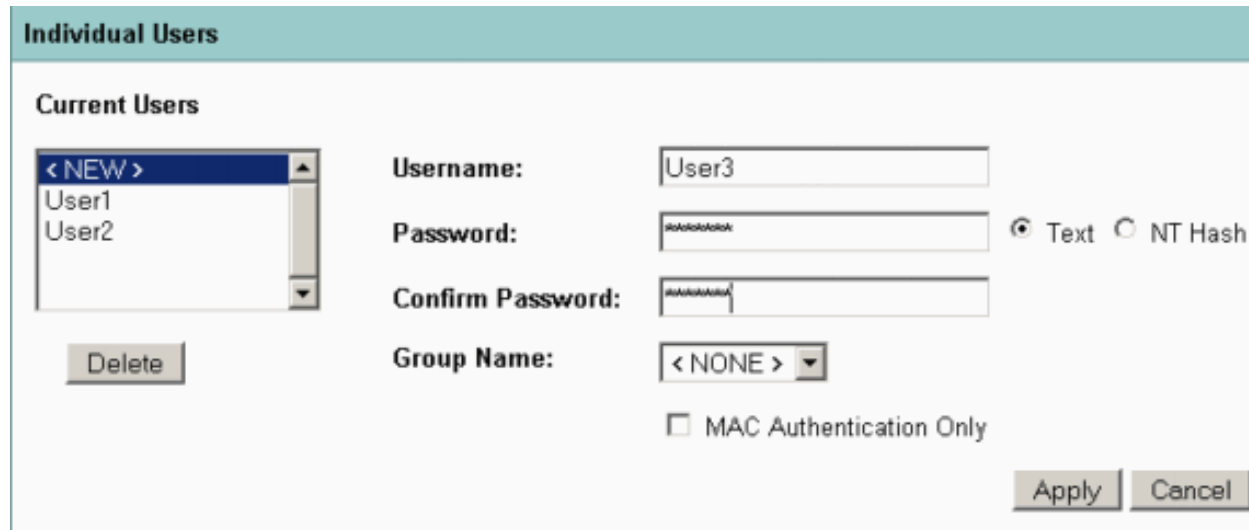
11. To add or remove a user, see [add a user](#) or [remove a user](#).

[Back to Top](#)

Add a New Wireless User

To add a new user to your wireless network, follow these steps:

1. Scroll to the **Individual Users** area of the General Setup screen.
2. Ensure that **<NEW>** is selected under **Current Users**.
3. In the Username field, enter the username that you entered in field W33 of the Integrated Services Router Worksheet.



The screenshot shows the 'Individual Users' configuration window. On the left, under 'Current Users', a dropdown menu is open with '<NEW>' selected, and 'User1' and 'User2' are visible below it. A 'Delete' button is located below the dropdown. To the right, the 'Username' field contains 'User3'. The 'Password' field contains a masked password, and the 'Confirm Password' field also contains a masked password. The 'Text' radio button is selected, and the 'NT Hash' radio button is unselected. The 'Group Name' dropdown is set to '<NONE >'. There is an unchecked checkbox for 'MAC Authentication Only'. 'Apply' and 'Cancel' buttons are at the bottom right.

4. Next to Password, choose **Text**.
5. Enter the user password in the **Password** field. Enter the password again in the **Confirm Password** field.

Note: Refer to [Password Security](#) for information about how to create strong passwords.

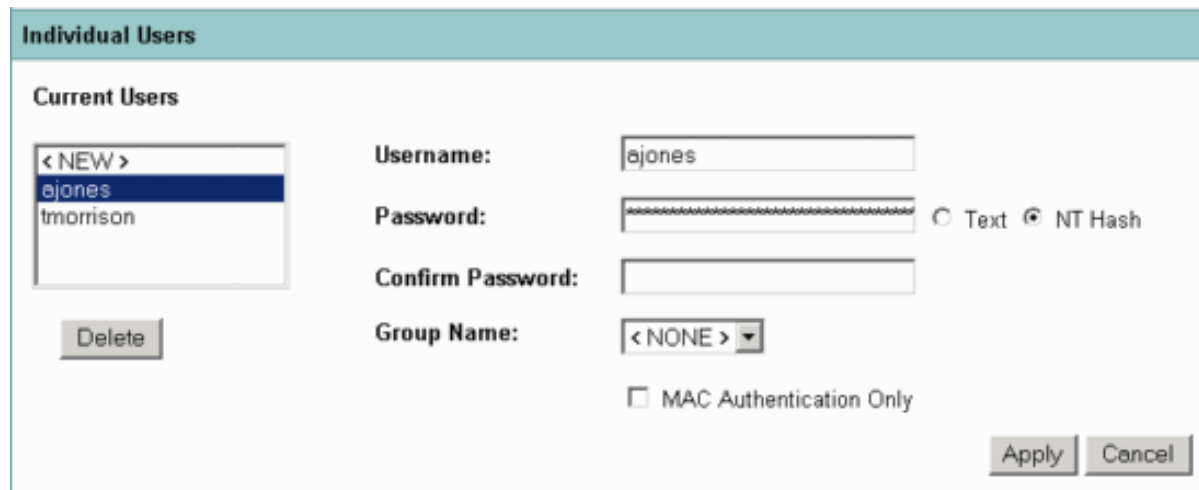
6. Click **Apply**.

[Back to Top](#)

Remove a Wireless User

To remove a user from your wireless network, follow these steps:

1. Scroll to the **Individual Users** area of the General Setup screen.
2. Under **Current Users**, select the user that you want to delete.



The screenshot shows the "Individual Users" configuration window. On the left, under "Current Users", there is a list box containing "< NEW >", "ejones", and "tmorrison". The "ejones" entry is selected. Below the list is a "Delete" button. To the right of the list are form fields for "Username:" (containing "ejones"), "Password:" (with a masked field and radio buttons for "Text" and "NT Hash"), "Confirm Password:" (empty), and "Group Name:" (a dropdown menu set to "< NONE >"). There is also a checkbox for "MAC Authentication Only" which is unchecked. At the bottom right are "Apply" and "Cancel" buttons.

3. Click **Delete** to remove the user.

[Back to Top](#)

Next Step

You have completed this procedure.

To configure an Internet connection, refer to the appropriate link for your connection type. If you are not sure what connection type you have, refer to your Internet Worksheet.

- [Set Up an Ethernet Connection](#)
- [Set Up an ADSL Connection](#)

- [Set up a T1/E1/Serial Connection](#)
- [Set up an ISDN Connection](#)

Note: If your router is already connected to the Internet, refer to [Set Up Internet Security on a Cisco Router](#).

[Back to Top](#)

Troubleshoot the Procedure

This section provides information about common problems that you may encounter. If this information does not solve your problem, contact the [SMB Technical Assistance Center \(SMB TAC\)](#) for assistance.

Problem	Cause(s) and Suggested Solution(s)
I cannot access the router.	Refer to Configure Your Router with Security Device Manager .

[Back to Top](#)

Related Information

- [Site Survey](#)
- [Cable Descriptions](#)
- [Configure Wireless Security on an Integrated Services Router](#)
- [Configure an IP Address on Your PC](#)
- [Password Security](#)