

# ASA 8.x Import RDP Plug-in for use with WebVPN Configuration Example

Document ID: 98667

## Contents

### Introduction

#### Prerequisites

- Requirements

- Components Used

- Conventions

#### Configure

- Step 1. Obtain the RDP Java Plug-in

- Step 2. Import the RDP Plug-in

- Step 3. Define RDP Connection Parameters (Optional)

- Step 4. Connect to an RDP Server

- Step 5. Verify the Configuration

#### Troubleshoot

#### Related Information

## Introduction

This document describes how to import the Remote Desktop Protocol (RDP) plug-in for use with WebVPN.

## Prerequisites

### Requirements

Configure basic WebVPN before you attempt the procedures described in this document.

### Components Used

This document uses an ASA 5510 that runs software version 8.0(2) and ASDM version 6.0(2). A Windows 2003 server is used to connect to the RDP plug-in via WebVPN. The client desktop has JRE 1.4.2\_05-b04 installed. A TFTP server is used to import the plug-in through the command line.

The information in this document was created from the devices in a specific lab environment. All of the devices used in this document started with a cleared (default) configuration. If your network is live, make sure that you understand the potential impact of any command.

### Conventions

Refer to the Cisco Technical Tips Conventions for more information on document conventions.

## Configure

In order to import and use the RDP plug-in, complete these steps:

## Step 1. Obtain the RDP Java Plug-in

You can download the RDP plug-in, along with other WebVPN compatible plug-ins, from the Cisco Software Center. For more information about the RDP plug-in, refer to this URL:  
<http://properjavardp.sourceforge.net/>

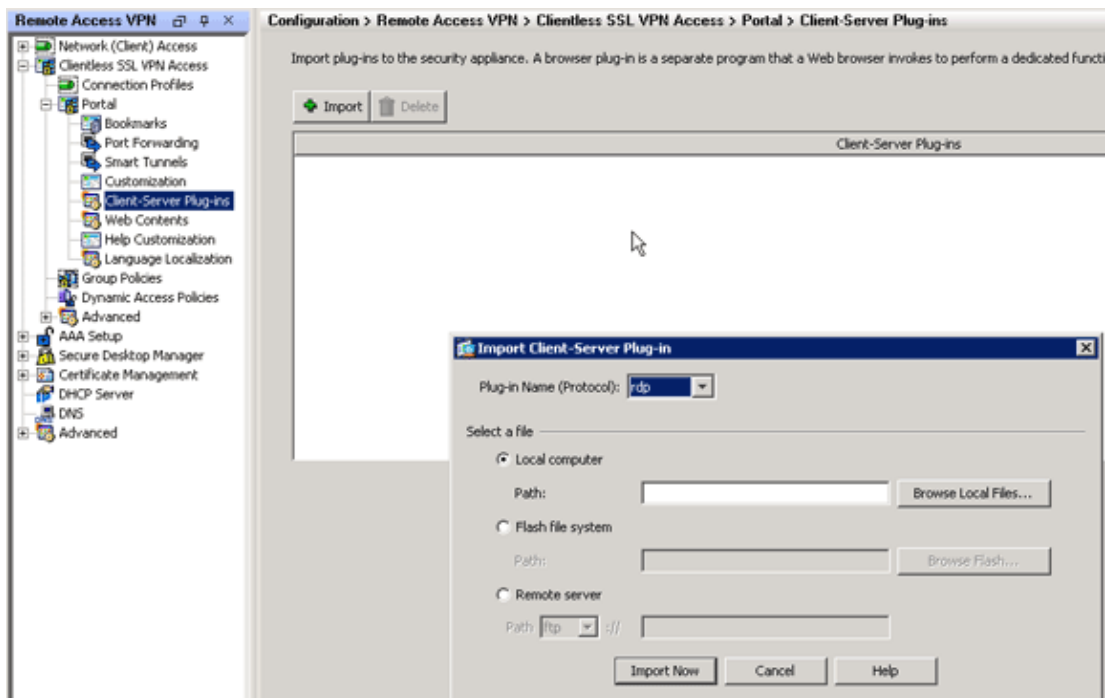
**Note:** The RDP plug-in provided on the Cisco website is optimized for JRE 1.4. You might experience usability problems if you use the RDP plug-in with other JRE releases. To resolve issues with the RDP plug-in, use the `ssl server-version any` command instead of the `ssl server-version tlsv1-only` command, which is used by default.

## Step 2. Import the RDP Plug-in

In order to use the RDP plug-in with WebVPN, you must import the plug-in to the ASA.

### ASDM Example

1. In the ASDM application, click **Configuration**, and then click **Remote Access VPN**.
2. Expand **Clientless SSL VPN Access**, expand **Portal**, and then choose **Client-Server Plug-ins**.
3. Click **Import**.



4. Select **rdp** from the Plug-in Name (Protocol) drop-down list.
5. Click the **Local computer** radio button, and click **Browse Local Files**.
6. Browse to the location in which you saved the RDP plug-in, and select the file.
7. Click **Import Now**.

This Information dialog box appears.

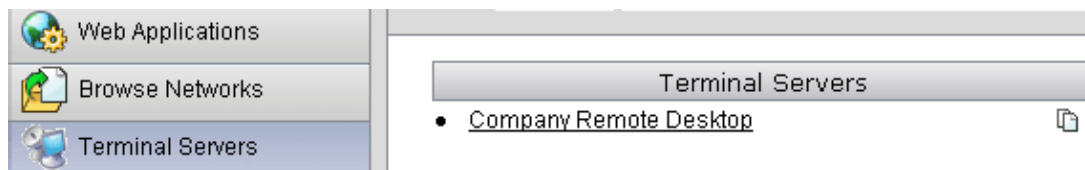


Address

For a full list of connection parameters, click Terminal Servers located on the left side of the VPN Service browser. This table lists some of the more common parameters:

WebVPN RDP Plug-in Variables		
Parameter	Argument	Definition
console	<i>yes</i>	Enters the current console session if defined.
username	<i>string</i>	User name used to log in to the RDP server.
password	<i>string</i>	Password used to log in the RDP server (not recommended).
domain	<i>string</i>	Domain name used to log in to RDP server.
geometry	<i>widthxhieght</i>	Defines the height and width of the screen (for example: 800x600 or 1024x768).
port	<i>integer</i>	RDP port number. The default RDP port number is 3389.

**Note:** You can use RDP connection parameters in RDS bookmark entries as well. This image shows an example of an RDP bookmark entry:



## Step 4. Connect to an RDP Server

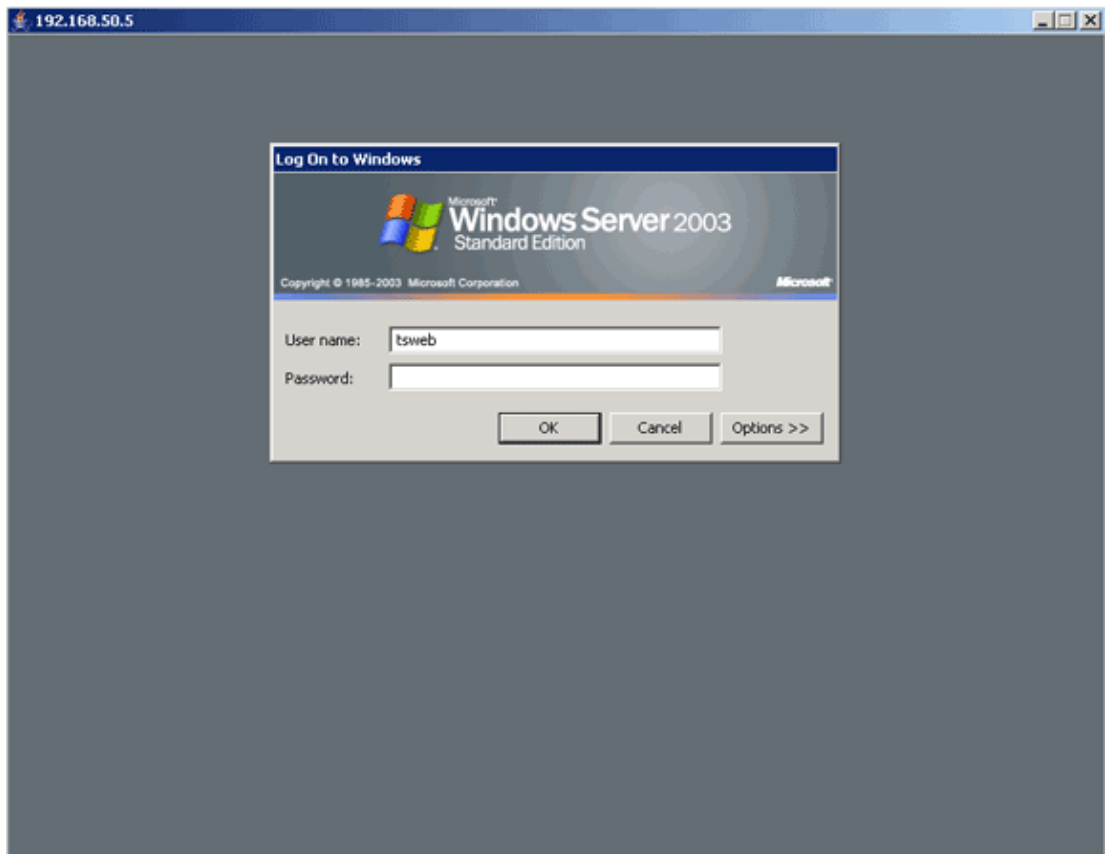
In order to connect to an RDP server, complete these steps:

1. Establish a WebVPN session, and choose rdp:// from the Address drop-down list.

Address

2. Enter the IP address of the RDP server or the connection parameters you defined in Step 3, and click Browse.

The RDP session appears in a new window.



## Step 5. Verify the Configuration

Use these procedures in order to verify that the RDP plug-in was imported successfully.

- Use the show import webvpn plug-in command in order to display the current WebVPN plug-ins, and verify rdp is listed in the output of the command.
- Verify that rdp:// is available as a URI option in the Address drop-down list when you are connected to WebVPN.

## Troubleshoot

Use these procedures in order to troubleshoot errors when you use the RDP plug-in:

- Clear Browser Cache

This procedure deletes all files that are currently stored in the cache of your browser.

1. In Internet Explorer, choose **Tools > Internet Options**.
2. In the Temporary Internet Files section, click the **General** tab, and then click **Delete Files**.

- Clear JRE Cache

This procedure deletes all files that are currently stored in the Java cache.

1. In Windows, click **Start**, and choose **Settings > Control Panel**.
2. In the Control Panel, double-click **Java Plug-in**.
3. Click the **Cache** tab, and click **Clear**.

- Uninstall/Reinstall JRE

1. In Windows, click Start, and choose **Settings > Control Panel > Add or Remove Programs**.
2. Choose the **Java Runtime Environment** program, and click **Remove**.
3. Download the new JRE from the Java website (<http://www.java.com/en/download/>), and install the new JRE.

**Note:** The RDP plug-in runs best and is optimized for JRE 1.4.

- Uninstall the RDP Plug-in

If the RDP option is not listed as a URI in the address field when you are logged into WebVPN, uninstall and reinstall the RDP plug-in. In order to remove the RDP plug-in from WebVPN, complete one of these procedures:

- ◆ *WebVPN* Navigate to Configuration > Remote Access VPN > Clientless SSL VPN Access > Portal > Client-Server Plug-ins, select the RDP plug-in, and click Delete.
- ◆ *CLI* Use the revert webvpn plug-in rdp command in order to remove the plug-in.

## Related Information

- **Technical Support & Documentation – Cisco Systems**
- 

[Contacts & Feedback](#) | [Help](#) | [Site Map](#)

© 2010 – 2011 Cisco Systems, Inc. All rights reserved. [Terms & Conditions](#) | [Privacy Statement](#) | [Cookie Policy](#) | [Trademarks of Cisco Systems, Inc.](#)

---

Updated: Aug 31, 2007

Document ID: 98667

---