

IPsec Tunnel Between IOS Router and Cisco VPN Client 4.x for Windows with TACACS+ User Authentication Configuration Example

Contents

[Introduction](#)

[Prerequisites](#)

[Requirements](#)

[Components Used](#)

[Conventions](#)

[Configure](#)

[Network Diagram](#)

[Configurations](#)

[Verify](#)

[Troubleshoot](#)

[Troubleshooting Commands](#)

[Router Logs](#)

[Client Logs](#)

[NetPro Discussion Forums - Featured Conversations](#)

[Related Information](#)

Introduction

This document describes how to configure an IPsec connection between a router and the Cisco Virtual Private Network (VPN) Client 4.x with Terminal Access Controller Access Control System Plus (TACACS+) for user authentication. Cisco IOS² Software Release 12.2(8)T and later releases support connections from Cisco VPN Client 4.x. The VPN Client 4.x uses Diffie-Hellman (D-H) group 2 policy. The **isakmp policy # group 2** command enables the 4.x clients to connect.

This document shows authentication on the TACACS+ server with authorization, such as Windows Internet Naming Service (WINS) and Domain Naming Service (DNS) assignments, performed locally by the router.

Refer to [Configuring Cisco VPN Client 3.x for Windows to IOS Using Local Extended Authentication](#) in order to learn more about the scenario where the user authentication occurs locally in the Cisco IOS router.

Refer to [Configuring IPsec Between a Cisco IOS Router and a Cisco VPN Client 4.x for Windows Using RADIUS for User Authentication](#) in order to learn more about the scenario where the user authentication occurs externally with RADIUS protocol.

Prerequisites

Requirements

Before you attempt this configuration, ensure that you meet these requirements:

- A pool of addresses to be assigned for IPsec
- A group named "vpngroup" with a password of "cisco123"
- User authentication on a TACACS+ server

Components Used

The information in this document is based on these software and hardware versions:

- Cisco VPN Client for Windows version 4.0.2D (any VPN Client 3.x or later should work.)
- Cisco Secure for Windows version 3.0 (any TACACS+ server should work)
- Cisco IOS 1710 Router version 12.2(8)T1 loaded with the IPsec feature set

Output from the **show version** command on the router is shown here.

```
1710#show version
Cisco Internetwork Operating System Software
IOS (tm) C1700 Software (C1710-K9O3SY-M),
  Version 12.2(8)T1, RELEASE SOFTWARE (fc2)
TAC Support: http://www.cisco.com/tac
Copyright (c) 1986-2002 by cisco Systems, Inc.
Compiled Sat 30-Mar-02 13:30 by ccai
Image text-base: 0x80008108, data-base: 0x80C1E054

ROM: System Bootstrap, Version 12.2(1r)XE1, RELEASE SOFTWARE (fc1)

1710 uptime is 1 week, 6 days, 22 hours, 30 minutes
System returned to ROM by reload
System image file is "flash:c1710-k9o3sy-mz.122-8.T1"

cisco 1710 (MPC855T) processor (revision 0x200)
  with 27853K/4915K bytes of memory.
Processor board ID JAD052706CX (3234866109), with hardware revision 0000
MPC855T processor: part number 5, mask 2
Bridging software.
X.25 software, Version 3.0.0.
1 Ethernet/IEEE 802.3 interface(s)
1 FastEthernet/IEEE 802.3 interface(s)
1 Virtual Private Network (VPN) Module(s)
32K bytes of non-volatile configuration memory.
16384K bytes of processor board System flash (Read/Write)

Configuration register is 0x2102
```

The information in this document was created from the devices in a specific lab environment. All of the devices used in this document started with a cleared (default) configuration. If your network is live, make sure that you understand the potential impact of any command.

Conventions

Refer to [Cisco Technical Tips Conventions](#) for information on document conventions.

Configure


In this section, you are presented with the information to configure the features described in this document.

Note: Use the [Command Lookup Tool](#) ([registered](#) customers only) in order to find more information on the commands used in this document.

Network Diagram

This document uses this network setup:



Note: The IP addressing schemes used in this configuration are not legally routable on the Internet. They are [RFC 1918](#)  addresses that have been used in a lab environment.

Configurations

This document uses these configurations:

- [Cisco 1710 Router](#)
- [TACACS+ Server](#)
- [VPN Client 4.x](#)
- [Split Tunneling](#)

Cisco 1710 Router

Cisco 1710 Router

```
1710#show run
Building configuration...

Current configuration : 1884 bytes
!
version 12.2
service timestamps debug uptime
service timestamps log uptime
no service password-encryption
!
hostname 1710
!

!--- Enable authentication, authorization and accounting (AAA)
!--- for user authentication and group authorization.

aaa new-model
!

!--- In order to enable extended authentication (Xauth) for user authentication,
!--- enable the aaa authentication commands.
!--- The group TACACS+ command specifies TACACS+ user authentication.

aaa authentication login userauthen group tacacs+

!--- In order to enable group authorization,
!--- enable the aaa authorization commands.

aaa authorization network groupauthor local
!
!
ip subnet-zero
!
!
ip audit notify log
ip audit po max-events 100
!

!--- Create an Internet Security Association and
!--- Key Management Protocol (ISAKMP) policy for Phase 1 negotiations.

crypto isakmp policy 3
encr 3des
authentication pre-share
group 2
!

!--- Create a group in order to specify the
!--- WINS and DNS server addresses to the VPN Client,
!--- along with the pre-shared key for authentication.

crypto isakmp client configuration group vpngroup
key cisco123
dns 10.2.1.10
```

```
wins 10.2.1.20
domain cisco.com
pool ippool
!

!--- Create the Phase 2 policy for actual data encryption.

crypto ipsec transform-set myset esp-3des esp-sha-hmac
!

!--- Create a dynamic map, and
!--- apply the transform set that was previously created.

crypto dynamic-map dynmap 10
set transform-set myset
!

!--- Create the actual crypto map,
!--- and apply the AAA lists that were created earlier.

crypto map clientmap client authentication list userauthen
crypto map clientmap isakmp authorization list groupauthor
crypto map clientmap client configuration address respond
crypto map clientmap 10 ipsec-isakmp dynamic dynmap
!
!
fax interface-type fax-mail
mta receive maximum-recipients 0
!
!
!

!--- Apply the crypto map on the outside interface.

interface FastEthernet0
ip address 172.18.124.158 255.255.255.0
crypto map clientmap
!
interface Ethernet0
ip address 10.38.50.51 255.255.0.0
!

!--- Create a pool of addresses to be assigned to the VPN Clients.

ip local pool ippool 10.1.1.100 10.1.1.200
ip classless
ip route 0.0.0.0 0.0.0.0 172.18.124.1
ip route 172.16.124.0 255.255.255.0 10.38.1.1
ip route 10.2.1.0 255.255.255.0 10.38.1.1
ip http server
ip pim bidir-enable
!
!
!

!--- Specify the IP address of the TACACS+ server,
!--- along with the TACACS+ shared secret key.
```

```

tacacs-server host 172.16.124.96 key cisco123
!
!
line con 0
  exec-timeout 0 0
line aux 0
line vty 0 4
!
!
end

```

TACACS+ Server

In order to configure the TACACS+ server, complete these steps:

1. Click **Add Entry** in order to add an entry for the router in the TACACS+ server database.

AAA Clients		
AAA Client Hostname	AAA Client IP Address	Authenticate Using
340	172.18.124.151	RADIUS (Cisco Aironet)
Aironet-340-Lab	10.36.1.99	RADIUS (Cisco Aironet)
others	<Default>	TACACS+ (Cisco IOS)

2. On the Add AAA Client page, enter the router information as shown in this image:

Add AAA Client

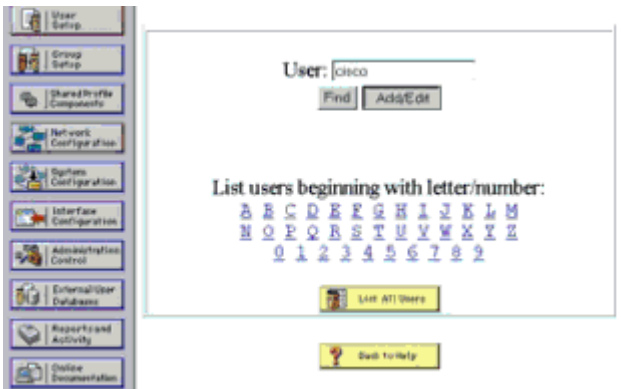
AAA Client Hostname	<input type="text" value="1710Router"/>
AAA Client IP Address	<input type="text" value="10.38.50.51"/>
Key	<input type="text" value="cisco123"/>
Authenticate Using	<input type="text" value="TACACS+ (Cisco IOS)"/>

Single Connect TACACS+ AAA Client (Record stop in accounting on failure).
 Log Update/Watchdog Packets from this AAA Client
 Log RADIUS Tunneling Packets from this AAA Client

- o In the AAA Client Hostname field, enter a name for the router.

- In the AAA Client IP Address field, enter **10.38.50.51**.
 - In the Key field, enter **cisco123** as the shared secret key.
 - From the Authenticate Using drop-down list, choose **TACACS+ (Cisco IOS)**, and click **Submit**.
3. In the User field, enter the user name for the VPN user in the Cisco Secure database, and click **Add/Edit**.

In this example, the user name is *cisco*.



The screenshot shows the 'User Setup' page in Cisco Secure. The 'User' field contains 'cisco'. Below it is a list of users beginning with 'c':

c	A	B	C	D	E	F	G	H	I	J	K	L	M
N	O	P	Q	R	S	T	U	V	W	X	Y	Z	
0	1	2	3	4	5	6	7	8	9				

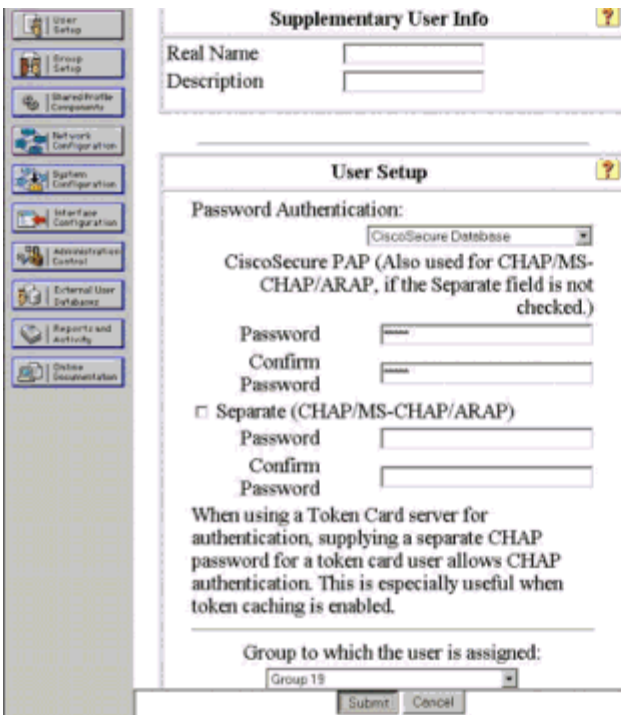
Buttons for 'Find', 'Add/Edit', 'List All Users', and 'Back to Help' are visible.

- [User Setup and External User Databases](#)
- [Finding a Specific User in the CiscoSecure User Database](#)
- [Adding a User to the CiscoSecure User Database](#)
- [Listing Usernames that Begin with a Particular Character](#)
- [Listing All Usernames in the CiscoSecure User Database](#)
- [Changing a Username in the CiscoSecure User Database](#)

User Setup enables you to configure individual user information, add users, and delete users in the database.

4. On the next page, enter and confirm the password for the user *cisco*.

In this example, the password is also *cisco*.



The screenshot shows the 'Supplementary User Info' and 'User Setup' sections. The 'Supplementary User Info' section has fields for 'Real Name' and 'Description'. The 'User Setup' section has a 'Password Authentication' section with a dropdown menu set to 'CiscoSecure Database'. Below this are fields for 'Password' and 'Confirm' for both 'CiscoSecure PAP' and 'Separate (CHAP/MS-CHAP/ARAP)'. There is also a 'Group to which the user is assigned:' dropdown menu set to 'Group 19'. Buttons for 'Submit' and 'Cancel' are at the bottom.

- [Account Disabled](#)
- [Deleting a Username](#)
- [Supplementary User Info](#)
- [Password Authentication](#)
- [Group to which the user is assigned](#)
- [Callback](#)
- [Client IP Address Assignment](#)
- [Advanced Settings](#)
- [Network Access Restrictions](#)
- [Max Sessions](#)
- [Usage Quotas](#)
- [Account Disable](#)
- [Downloadable ACLs](#)
- [Advanced TACACS+ Settings](#)
- [TACACS+ Enable Control](#)
- [TACACS+ Enable Password](#)
- [TACACS+ Outbound Password](#)
- [TACACS+ Shell Command Authorization](#)
- [TACACS+ Unknown Services](#)
- [IETF RADIUS Attributes](#)
- [RADIUS Vendor-Specific Attributes](#)

Account Disabled Status

Select the Account Disabled check box to disable this account; clear the check box to enable the account.

[\[Back to Top\]](#)

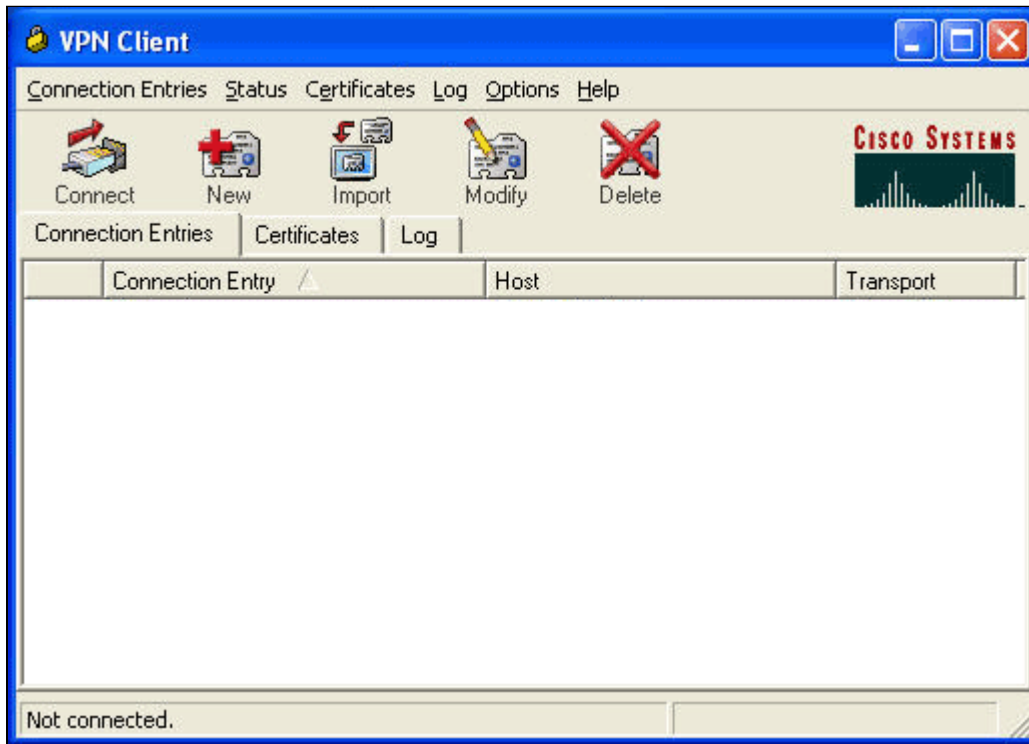
5. If you want to map the user account to a group, complete that step now. When you finish, click

Submit.

VPN Client 4.x

In order to configure VPN Client 4.x, complete these steps:

1. Launch the VPN Client, and click **New** in order to create a new connection.



The VPN Client Create New VPN Connection Entry dialog box appears.

VPN Client | Create New VPN Connection Entry

Connection Entry:

Description:

Host:

Authentication | Transport | Backup Servers | Dial-Up

Group Authentication Mutual Group Authentication

Name:

Password:

Confirm Password:

Certificate Authentication

Name:

Send CA Certificate Chain

Erase User Password | Save | Cancel

2. In the Create New VPN Connection Entry dialog box, enter connection information as shown in this image:

VPN Client | Create New VPN Connection Entry

Connection Entry: IOS

Description: Connection to an IOS router

Host: 172.18.124.158

Authentication | Transport | Backup Servers | Dial-Up

Group Authentication Mutual Group Authentication

Name: vpngroup

Password: *****

Confirm Password: *****

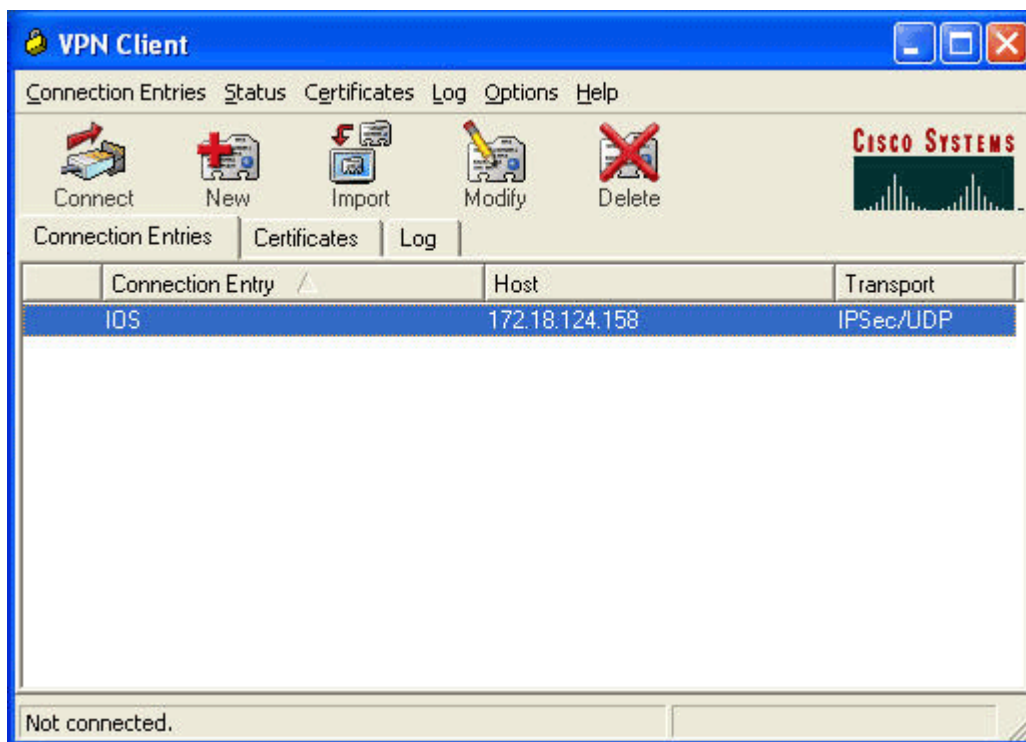
Certificate Authentication

Name:

Send CA Certificate Chain

Erase User Password | Save | Cancel

- In the Connection Entry field, enter a name for the connection.
 - In the Description and Host fields, enter a description and the host IP address for the connection entry.
 - On the Authentication tab, click the **Group Authentication** radio button, and enter the name and password of the user.
 - Click **Save** in order to save the connection.
3. In the VPN Client window, select the connection entry that you created, and click **Connect** in order to connect to the router.



4. As IPsec negotiates, you are prompted for a user name and password. Enter a user name and password.

The window displays these messages:

"Negotiating security profiles."

"Your link is now secure."

Split Tunneling

In order to enable split tunneling for the VPN connections, make sure you configure an access control list (ACL) on the router. In this example, the **access-list 102** command is associated with the group for split-tunneling purposes, and the tunnel is formed to the 10.38.X.X /16 and 10.2.x.x networks. Traffic flows unencrypted to devices not in ACL 102 (for example, the Internet).

```
access-list 102 permit ip 10.38.0.0 0.0.255.255 10.1.1.0 0.0.0.255
access-list 102 permit ip 10.2.0.0 0.0.255.255 10.1.1.0 0.0.0.255
```

Apply the ACL on the group properties.

```
crypto isakmp client configuration group vpngroup
  key cisco123
  dns 10.2.1.10
  wins 10.2.1.20
  domain cisco.com
  pool ippool
  acl 102
```

Verify

This section provides information you can use to confirm that your configuration works properly.

Certain **show** commands are supported by the [Output Interpreter Tool](#) ([registered](#) customers only) . This tool allows you to view an analysis of **show** command output.

```
1710#show crypto isakmp sa
dst          src          state          conn-id      slot
172.18.124.158 192.168.60.34 QM_IDLE        3            0

1710#show crypto ipsec sa

interface: FastEthernet0
Crypto map tag: clientmap, local addr. 172.18.124.158

local ident (addr/mask/prot/port): (172.18.124.158/255.255.255.255/0/0)
remote ident (addr/mask/prot/port): (10.1.1.114/255.255.255.255/0/0)
current_peer: 192.168.60.34
PERMIT, flags={}
#pkts encaps: 0, #pkts encrypt: 0, #pkts digest 0
#pkts decaps: 0, #pkts decrypt: 0, #pkts verify 0
#pkts compressed: 0, #pkts decompressed: 0
#pkts not compressed: 0, #pkts compr. failed: 0, #pkts decompress failed: 0
#send errors 0, #recv errors 0

local crypto endpt.: 172.18.124.158, remote crypto endpt.: 192.168.60.34
path mtu 1500, media mtu 1500
current outbound spi: 8F9BB05F

inbound esp sas:
spi: 0x61C53A64(1640315492)
transform: esp-3des esp-sha-hmac ,
in use settings = {Tunnel, }
slot: 0, conn id: 200, flow_id: 1, crypto map: clientmap
sa timing: remaining key lifetime (k/sec): (4608000/3294)
IV size: 8 bytes
replay detection support: Y

inbound ah sas:

inbound pcp sas:
```

```

outbound esp sas:
spi: 0x8F9BB05F(2409345119)
transform: esp-3des esp-sha-hmac ,
in use settings ={Tunnel, }
slot: 0, conn id: 201, flow_id: 2, crypto map: clientmap
sa timing: remaining key lifetime (k/sec): (4608000/3294)
IV size: 8 bytes
replay detection support: Y

outbound ah sas:

outbound pcp sas:

local ident (addr/mask/prot/port): (10.38.0.0/255.255.0.0/0/0)
remote ident (addr/mask/prot/port): (10.1.1.114/255.255.255.255/0/0)
current_peer: 192.168.60.34
PERMIT, flags={}
#pkts encaps: 3, #pkts encrypt: 3, #pkts digest 3
#pkts decaps: 3, #pkts decrypt: 3, #pkts verify 3
#pkts compressed: 0, #pkts decompressed: 0
#pkts not compressed: 0, #pkts compr. failed: 0, #pkts decompress failed: 0
#send errors 0, #recv errors 0

local crypto endpt.: 172.18.124.158, remote crypto endpt.: 192.168.60.34
path mtu 1500, media mtu 1500
current outbound spi: 8B57E45E

inbound esp sas:
spi: 0x89898D1A(2307493146)
transform: esp-3des esp-sha-hmac ,
in use settings ={Tunnel, }
slot: 0, conn id: 202, flow_id: 3, crypto map: clientmap
sa timing: remaining key lifetime (k/sec): (4607999/3452)
IV size: 8 bytes
replay detection support: Y

inbound ah sas:

inbound pcp sas:

outbound esp sas:
spi: 0x8B57E45E(2337793118)
transform: esp-3des esp-sha-hmac ,
in use settings ={Tunnel, }
slot: 0, conn id: 203, flow_id: 4, crypto map: clientmap
sa timing: remaining key lifetime (k/sec): (4607999/3452)
IV size: 8 bytes
replay detection support: Y

outbound ah sas:

outbound pcp sas:

```

```
1710#show crypto engine connections active
```

ID	Interface	IP-Address	State	Algorithm	Encrypt	Decrypt
2	FastEthernet0	172.18.124.158	set	HMAC_SHA+3DES_56_C	0	0
200	FastEthernet0	172.18.124.158	set	HMAC_SHA+3DES_56_C	0	0

201	FastEthernet0	172.18.124.158	set	HMAC_SHA+3DES_56_C	0	0
202	FastEthernet0	172.18.124.158	set	HMAC_SHA+3DES_56_C	0	3
203	FastEthernet0	172.18.124.158	set	HMAC_SHA+3DES_56_C	3	0

Troubleshoot

This section provides information you can use to troubleshoot your configuration.

Troubleshooting Commands

The [Output Interpreter Tool](#) ([registered](#) customers only) (OIT) supports certain **show** commands. Use the OIT in order to view an analysis of **show** command output.

Note: Refer to [Important Information on Debug Commands](#) before you use **debug** commands.

- **debug crypto ipsec**—Displays debug information about IPsec connections.
- **debug crypto isakmp**—Displays debug information about IPsec connections and shows the first set of attributes that are denied due to incompatibilities on both ends.
- **debug crypto engine**—Displays information from the crypto engine.
- **debug aaa authentication**—Displays information on AAA/TACACS+ authentication.
- **debug aaa authorization**—Displays information on AAA/TACACS+ authorization.
- **debug tacacs**—Displays information that allows you to troubleshoot communication between the TACACS+ server and the router.

Router Logs

```

1710#show debug
General OS:
TACACS access control debugging is on
AAA Authentication debugging is on
AAA Authorization debugging is on
Cryptographic Subsystem:
Crypto ISAKMP debugging is on
Crypto Engine debugging is on
Crypto IPSEC debugging is on

1710#
1w6d: ISAKMP (0:0): received packet from 192.168.60.34 (N) NEW SA
1w6d: ISAKMP: local port 500, remote port 500
1w6d: ISAKMP (0:2): (Re)Setting client xauth list userauthen and state
1w6d: ISAKMP: Locking CONFIG struct 0x8158B894 from
      crypto_ikmp_config_initialize_sa, count 2
1w6d: ISAKMP (0:2): processing SA payload. message ID = 0
1w6d: ISAKMP (0:2): processing ID payload. message ID = 0
1w6d: ISAKMP (0:2): processing vendor id payload
1w6d: ISAKMP (0:2): vendor ID seems Unity/DPD but bad major
1w6d: ISAKMP (0:2): vendor ID is XAUTH

```

```
lw6d: ISAKMP (0:2): processing vendor id payload
lw6d: ISAKMP (0:2): vendor ID is DPD
lw6d: ISAKMP (0:2): processing vendor id payload
lw6d: ISAKMP (0:2): vendor ID is Unity
lw6d: ISAKMP (0:2): Checking ISAKMP transform 1 against priority 3 policy
lw6d: ISAKMP: encryption 3DES-CBC
lw6d: ISAKMP: hash SHA
lw6d: ISAKMP: default group 2
lw6d: ISAKMP: auth XAUTHInitPreShared
lw6d: ISAKMP: life type in seconds
lw6d: ISAKMP: life duration (VPI) of 0x0 0x20 0xC4 0x9B
lw6d: ISAKMP (0:2): atts are acceptable. Next payload is 3
lw6d: CryptoEngine0: generate alg parameter
lw6d: CryptoEngine0: CRYPTO_ISA_DH_CREATE(hw)(ipsec)
lw6d: CRYPTO_ENGINE: Dh phase 1 status: 0
lw6d: ISAKMP (0:2): processing KE payload. message ID = 0
lw6d: CryptoEngine0: generate alg parameter
lw6d: CryptoEngine0: CRYPTO_ISA_DH_SHARE_SECRET(hw)(ipsec)
lw6d: ISAKMP (0:2): processing NONCE payload. message ID = 0
lw6d: ISAKMP (0:2): processing vendor id payload
lw6d: ISAKMP (0:2): processing vendor id payload
lw6d: ISAKMP (0:2): processing vendor id payload
lw6d: AAA: parse name=ISAKMP-ID-AUTH idb type=-1 tty=-1
lw6d: AAA/MEMORY: create_user (0x817F63F4) user='vpngroup' ruser='NULL' ds0=0
    port='ISAKMP-ID-AUTH' rem_addr='192.168.60.34' authen_type=NONE
    service=LOGIN priv=0 initial_task_id='0'
lw6d: ISAKMP (0:2): Input = IKE_MESG_FROM_PEER, IKE_AM_EXCH
Old State = IKE_READY New State = IKE_R_AM_AAA_AWAIT

lw6d: ISAKMP-ID-AUTH AAA/AUTHOR/CRYPTO AAA(1472763894):
    Port='ISAKMP-ID-AUTH' list='groupauthor' service=NET
lw6d: AAA/AUTHOR/CRYPTO AAA: ISAKMP-ID-AUTH(1472763894) user='vpngroup'
lw6d: ISAKMP-ID-AUTH AAA/AUTHOR/CRYPTO AAA(1472763894): send AV service=ike
lw6d: ISAKMP-ID-AUTH AAA/AUTHOR/CRYPTO AAA(1472763894): send AV protocol=ipsec
lw6d: ISAKMP-ID-AUTH AAA/AUTHOR/CRYPTO AAA(1472763894): found list "groupauthor
lw6d: ISAKMP-ID-AUTH AAA/AUTHOR/CRYPTO AAA(1472763894): Method=LOCAL
lw6d: AAA/AUTHOR (1472763894): Post authorization status = PASS_ADD
lw6d: ISAKMP: got callback 1
AAA/AUTHOR/IKE: Processing AV service=ike
AAA/AUTHOR/IKE: Processing AV protocol=ipsec
AAA/AUTHOR/IKE: Processing AV tunnel-password=cisco123
AAA/AUTHOR/IKE: Processing AV default-domain*cisco.com
AAA/AUTHOR/IKE: Processing AV addr-pool*ippool
AAA/AUTHOR/IKE: Processing AV key-exchange=ike
AAA/AUTHOR/IKE: Processing AV timeout*0
AAA/AUTHOR/IKE: Processing AV idletime*0
AAA/AUTHOR/IKE: Processing AV inacl*102
AAA/AUTHOR/IKE: Processing AV dns-servers*10.1.1.10 0.0.0.0
AAA/AUTHOR/IKE: Processing AV wins-servers*10.1.1.20 0.0.0.0
lw6d: CryptoEngine0: create ISAKMP SKEYID for conn id 2
lw6d: CryptoEngine0: CRYPTO_ISA_SA_CREATE(hw)(ipsec)
lw6d: ISAKMP (0:2): SKEYID state generated
lw6d: ISAKMP (0:2): SA is doing pre-shared key authentication plus
    XAUTH using id type ID_IPV4_ADDR
lw6d: ISAKMP (2): ID payload
next-payload : 10
type : 1
protocol : 17
port : 500
length : 8
```

```
lw6d: ISAKMP (2): Total payload length: 12
lw6d: CryptoEngine0: generate hmac context for conn id 2
lw6d: CryptoEngine0: CRYPTO_ISA_IKE_HMAC(hw)(ipsec)
lw6d: ISAKMP (0:2): sending packet to 192.168.60.34 (R) AG_INIT_EXCH
lw6d: ISAKMP (0:2): Input = IKE_MESG_FROM_AAA, PRESHARED_KEY_REPLY
Old State = IKE_R_AM_AAA_AWAIT New State = IKE_R_AM2

lw6d: AAA/MEMORY: free_user (0x817F63F4) user='vpngroup'
    ruser='NULL' port='ISAK MP-ID-AUTH' rem_addr='192.168.60.34'
    authen_type=NONE service=LOGIN priv=0
lw6d: ISAKMP (0:2): received packet from 192.168.60.34 (R) AG_INIT_EXCH
lw6d: CryptoEngine0: CRYPTO_ISA_IKE_DECRYPT(hw)(ipsec)
lw6d: ISAKMP (0:2): processing HASH payload. message ID = 0
lw6d: CryptoEngine0: generate hmac context for conn id 2
lw6d: CryptoEngine0: CRYPTO_ISA_IKE_HMAC(hw)(ipsec)
lw6d: ISAKMP (0:2): processing NOTIFY INITIAL_CONTACT protocol 1
    spi 0, message ID = 0, sa = 81673884
lw6d: ISAKMP (0:2): Process initial contact, bring down
    existing phase 1 and 2 SA's
lw6d: ISAKMP (0:2): returning IP addr to the address pool: 10.1.1.113
lw6d: ISAKMP (0:2): returning address 10.1.1.113 to pool
lw6d: ISAKMP (0:2): peer does not do paranoid keepalives.

lw6d: ISAKMP (0:2): SA has been authenticated with 192.168.60.34
lw6d: CryptoEngine0: clear dh number for conn id 1
lw6d: CryptoEngine0: CRYPTO_ISA_DH_DELETE(hw)(ipsec)
lw6d: IPSEC(key_engine): got a queue event...
lw6d: IPSEC(key_engine_delete_sas): rec'd delete notify from ISAKMP
lw6d: IPSEC(key_engine_delete_sas): delete all SAs shared with 192.168.60.34
lw6d: CryptoEngine0: generate hmac context for conn id 2
lw6d: CryptoEngine0: CRYPTO_ISA_IKE_HMAC(hw)(ipsec)
lw6d: CryptoEngine0: CRYPTO_ISA_IKE_ENCRYPT(hw)(ipsec)
lw6d: ISAKMP (0:2): sending packet to 192.168.60.34 (R) QM_IDLE
lw6d: ISAKMP (0:2): purging node 1324880791
lw6d: ISAKMP: Sending phase 1 responder lifetime 86400

lw6d: ISAKMP (0:2): Input = IKE_MESG_FROM_PEER, IKE_AM_EXCH
Old State = IKE_R_AM2 New State = IKE_P1_COMPLETE

lw6d: ISAKMP (0:2): Need XAUTH
lw6d: AAA: parse name=ISAKMP idb type=-1 tty=-1
lw6d: AAA/MEMORY: create_user (0x812F79FC) user='NULL'
    ruser='NULL' ds0=0 port='
ISAKMP' rem_addr='192.168.60.34' authen_type=ASCII service=LOGIN
    priv=0 initial_task_id='0'
lw6d: ISAKMP (0:2): Input = IKE_MESG_INTERNAL, IKE_PHASE1_COMPLETE
Old State = IKE_P1_COMPLETE New State = IKE_XAUTH_AAA_START_LOGIN_AWAIT

lw6d: AAA/AUTHEN/START (2017610393): port='ISAKMP' list='userauthen'
    action=LOGIN service=LOGIN
lw6d: AAA/AUTHEN/START (2017610393): found list userauthen
lw6d: AAA/AUTHEN/START (2017610393): Method=tacacs+ (tacacs+)
lw6d: TAC+: send AUTHEN/START packet ver=192 id=2017610393
lw6d: TAC+: Using default tacacs server-group "tacacs+" list.
lw6d: TAC+: Opening TCP/IP to 172.16.124.96/49 timeout=5
lw6d: TAC+: Opened TCP/IP handle 0x8183D638 to 172.16.124.96/49
lw6d: TAC+: 172.16.124.96 (2017610393) AUTHEN/START/LOGIN/ASCII queued
lw6d: TAC+: (2017610393) AUTHEN/START/LOGIN/ASCII processed
lw6d: TAC+: ver=192 id=2017610393 received AUTHEN status = GETUSER
lw6d: AAA/AUTHEN(2017610393): Status=GETUSER
```

```
lw6d: ISAKMP: got callback 1
lw6d: ISAKMP/xauth: request attribute XAUTH_TYPE_V2
lw6d: ISAKMP/xauth: request attribute XAUTH_MESSAGE_V2
lw6d: ISAKMP/xauth: request attribute XAUTH_USER_NAME_V2
lw6d: ISAKMP/xauth: request attribute XAUTH_USER_PASSWORD_V2
lw6d: CryptoEngine0: generate hmac context for conn id 2
lw6d: CryptoEngine0: CRYPTO_ISA_IKE_HMAC(hw)(ipsec)
lw6d: ISAKMP (0:2): initiating peer config to 192.168.60.34. ID = 1641488057
lw6d: CryptoEngine0: CRYPTO_ISA_IKE_ENCRYPT(hw)(ipsec)
lw6d: ISAKMP (0:2): sending packet to 192.168.60.34 (R) CONF_XAUTH
lw6d: ISAKMP (0:2): Input = IKE_MESG_FROM_AAA, IKE_AAA_START_LOGIN
Old State = IKE_XAUTH_AAA_START_LOGIN_AWAIT
New State = IKE_XAUTH_REQ_SENT

lw6d: ISAKMP (0:2): received packet from 192.168.60.34 (R) CONF_XAUTH
lw6d: CryptoEngine0: CRYPTO_ISA_IKE_DECRYPT(hw)(ipsec)
lw6d: ISAKMP (0:2): processing transaction payload from 192.168.60.34.
message ID = 1641488057
lw6d: CryptoEngine0: generate hmac context for conn id 2
lw6d: CryptoEngine0: CRYPTO_ISA_IKE_HMAC(hw)(ipsec)
lw6d: ISAKMP: Config payload REPLY
lw6d: ISAKMP/xauth: reply attribute XAUTH_TYPE_V2 unexpected
lw6d: ISAKMP/xauth: reply attribute XAUTH_USER_NAME_V2
lw6d: ISAKMP/xauth: reply attribute XAUTH_USER_PASSWORD_V2
lw6d: ISAKMP (0:2): deleting node 1641488057 error FALSE
reason "done with xauth request/reply exchange"
lw6d: ISAKMP (0:2): Input = IKE_MESG_FROM_PEER, IKE_CFG_REPLY
Old State = IKE_XAUTH_REQ_SENT
New State = IKE_XAUTH_AAA_CONT_LOGIN_AWAIT

lw6d: AAA/AUTHEN/CONT (2017610393): continue_login (user='(undef)')
lw6d: AAA/AUTHEN(2017610393): Status=GETUSER
lw6d: AAA/AUTHEN(2017610393): Method=tacacs+ (tacacs+)
lw6d: TAC+: send AUTHEN/CONT packet id=2017610393
lw6d: TAC+: 172.16.124.96 (2017610393) AUTHEN/CONT queued
lw6d: TAC+: (2017610393) AUTHEN/CONT processed
lw6d: TAC+: ver=192 id=2017610393 received AUTHEN status = GETPASS
lw6d: AAA/AUTHEN(2017610393): Status=GETPASS
lw6d: AAA/AUTHEN/CONT (2017610393): continue_login (user='cisco')
lw6d: AAA/AUTHEN(2017610393): Status=GETPASS
lw6d: AAA/AUTHEN(2017610393): Method=tacacs+ (tacacs+)
lw6d: TAC+: send AUTHEN/CONT packet id=2017610393
lw6d: TAC+: 172.16.124.96 (2017610393) AUTHEN/CONT queued
lw6d: TAC+: (2017610393) AUTHEN/CONT processed
lw6d: TAC+: ver=192 id=2017610393 received AUTHEN status = PASS
lw6d: AAA/AUTHEN(2017610393): Status=PASS
lw6d: ISAKMP: got callback 1
lw6d: TAC+: Closing TCP/IP 0x8183D638 connection to 172.16.124.96/49
lw6d: CryptoEngine0: generate hmac context for conn id 2
lw6d: CryptoEngine0: CRYPTO_ISA_IKE_HMAC(hw)(ipsec)
lw6d: ISAKMP (0:2): initiating peer config to 192.168.60.34. ID = 1736579999
lw6d: CryptoEngine0: CRYPTO_ISA_IKE_ENCRYPT(hw)(ipsec)
lw6d: ISAKMP (0:2): sending packet to 192.168.60.34 (R) CONF_XAUTH
lw6d: ISAKMP (0:2): Input = IKE_MESG_FROM_AAA, IKE_AAA_CONT_LOGIN
Old State = IKE_XAUTH_AAA_CONT_LOGIN_AWAIT
New State = IKE_XAUTH_SET_SENT

lw6d: AAA/MEMORY: free_user (0x812F79FC) user='cisco' ruser='NULL'
port='ISAKMP' rem_addr='192.168.60.34' authen_type=ASCII
service=LOGIN priv=0
```

```
lw6d: ISAKMP (0:2): received packet from 192.168.60.34 (R) CONF_XAUTH
lw6d: CryptoEngine0: CRYPTO_ISA_IKE_DECRYPT(hw)(ipsec)
lw6d: ISAKMP (0:2): processing transaction payload from 192.168.60.34.
    message ID = 1736579999
lw6d: CryptoEngine0: generate hmac context for conn id 2
lw6d: CryptoEngine0: CRYPTO_ISA_IKE_HMAC(hw)(ipsec)
lw6d: ISAKMP: Config payload ACK
lw6d: ISAKMP (0:2): XAUTH ACK Processed
lw6d: ISAKMP (0:2): deleting node 1736579999 error FALSE
    reason "done with transaction"
lw6d: ISAKMP (0:2): Input = IKE_MESG_FROM_PEER, IKE_CFG_ACK
Old State = IKE_XAUTH_SET_SENT New State = IKE_P1_COMPLETE

lw6d: ISAKMP (0:2): Input = IKE_MESG_INTERNAL, IKE_PHASE1_COMPLETE
Old State = IKE_P1_COMPLETE New State = IKE_P1_COMPLETE

lw6d: ISAKMP (0:2): received packet from 192.168.60.34 (R) QM_IDLE
lw6d: CryptoEngine0: CRYPTO_ISA_IKE_DECRYPT(hw)(ipsec)
lw6d: ISAKMP (0:2): processing transaction payload from 192.168.60.34.
    message ID = 398811763
lw6d: CryptoEngine0: generate hmac context for conn id 2
lw6d: CryptoEngine0: CRYPTO_ISA_IKE_HMAC(hw)(ipsec)
lw6d: ISAKMP: Config payload REQUEST
lw6d: ISAKMP (0:2): checking request:
lw6d: ISAKMP: IP4_ADDRESS
lw6d: ISAKMP: IP4_NETMASK
lw6d: ISAKMP: IP4_DNS
lw6d: ISAKMP: IP4_NBNS
lw6d: ISAKMP: ADDRESS_EXPIRY
lw6d: ISAKMP: APPLICATION_VERSION
lw6d: ISAKMP: UNKNOWN Unknown Attr: 0x7000
lw6d: ISAKMP: UNKNOWN Unknown Attr: 0x7001
lw6d: ISAKMP: DEFAULT_DOMAIN
lw6d: ISAKMP: SPLIT_INCLUDE
lw6d: ISAKMP: UNKNOWN Unknown Attr: 0x7007
lw6d: ISAKMP: UNKNOWN Unknown Attr: 0x7008
lw6d: ISAKMP: UNKNOWN Unknown Attr: 0x7005
lw6d: AAA: parse name=ISAKMP-GROUP-AUTH idb type=-1 tty=-1
lw6d: AAA/MEMORY: create_user (0x812F79FC) user='vpngroup' ruser='NULL' ds0=0 p
rt='ISAKMP-GROUP-AUTH' rem_addr='192.168.60.34' authen_type=NONE service=LOGIN
iv=0 initial_task_id='0'
lw6d: ISAKMP (0:2): Input = IKE_MESG_FROM_PEER, IKE_CFG_REQUEST
Old State = IKE_P1_COMPLETE New State = IKE_CONFIG_AUTHOR_AAA_AWAIT

lw6d: ISAKMP-GROUP-AUTH AAA/AUTHOR/CRYPTO AAA(1059453615):
    Port='ISAKMP-GROUP-AUTH' list='groupauthor' service=NET
lw6d: AAA/AUTHOR/CRYPTO AAA: ISAKMP-GROUP-AUTH(1059453615)
    user='vpngroup'
lw6d: ISAKMP-GROUP-AUTH AAA/AUTHOR/CRYPTO AAA(1059453615):
    send AV service=ike
lw6d: ISAKMP-GROUP-AUTH AAA/AUTHOR/CRYPTO AAA(1059453615):
    send AV protocol=ipsec
lw6d: ISAKMP-GROUP-AUTH AAA/AUTHOR/CRYPTO AAA(1059453615):
    found list "groupauthor"
lw6d: ISAKMP-GROUP-AUTH AAA/AUTHOR/CRYPTO AAA(1059453615):
    Method=LOCAL
lw6d: AAA/AUTHOR (1059453615): Post authorization status = PASS_ADD
lw6d: ISAKMP: got callback 1
AAA/AUTHOR/IKE: Processing AV service=ike
AAA/AUTHOR/IKE: Processing AV protocol=ipsec
```

```
AAA/AUTHOR/IKE: Processing AV tunnel-password=cisco123
AAA/AUTHOR/IKE: Processing AV default-domain*cisco.com
AAA/AUTHOR/IKE: Processing AV addr-pool*ippool
AAA/AUTHOR/IKE: Processing AV key-exchange=ike
AAA/AUTHOR/IKE: Processing AV timeout*0
AAA/AUTHOR/IKE: Processing AV idletime*0
AAA/AUTHOR/IKE: Processing AV inacl*102
AAA/AUTHOR/IKE: Processing AV dns-servers*10.1.1.10 0.0.0.0
AAA/AUTHOR/IKE: Processing AV wins-servers*10.1.1.20 0.0.0.0
lw6d: ISAKMP (0:2): attributes sent in message:
lw6d: Address: 0.2.0.0
lw6d: ISAKMP (0:2): allocating address 10.1.1.114
lw6d: ISAKMP: Sending private address: 10.1.1.114
lw6d: ISAKMP: Unknown Attr: IP4_NETMASK (0x2)
lw6d: ISAKMP: Sending IP4_DNS server address: 10.1.1.10
lw6d: ISAKMP: Sending IP4_NBNS server address: 10.1.1.20
lw6d: ISAKMP: Sending ADDRESS_EXPIRY seconds left to use the address: 86396
lw6d: ISAKMP: Sending APPLICATION_VERSION string:
Cisco Internet Network Operating System Software IOS (tm) C1700 Software
(C1710-K9O3SY-M), Version 12.2(8)T1, RELEASE SOFTWARE (fc2)
TAC Support: http://www.cisco.com/tac
Copyright (c) 1986-2002 by cisco Systems, Inc.
Compiled Sat 30-Mar-02 13:30 by ccai
lw6d: ISAKMP: Unknown Attr: UNKNOWN (0x7000)
lw6d: ISAKMP: Unknown Attr: UNKNOWN (0x7001)
lw6d: ISAKMP: Sending DEFAULT_DOMAIN default domain name: cisco.com
lw6d: ISAKMP: Sending split include name 102 network 10.38.0.0
mask 255.255.0.0 protocol 0, src port 0, dst port 0

lw6d: ISAKMP: Unknown Attr: UNKNOWN (0x7007)
lw6d: ISAKMP: Unknown Attr: UNKNOWN (0x7008)
lw6d: ISAKMP: Unknown Attr: UNKNOWN (0x7005)
lw6d: CryptoEngine0: generate hmac context for conn id 2
lw6d: CryptoEngine0: CRYPTO_ISA_IKE_HMAC(hw)(ipsec)
lw6d: ISAKMP (0:2): responding to peer config from 192.168.60.34. ID = 39881176
lw6d: CryptoEngine0: CRYPTO_ISA_IKE_ENCRYPT(hw)(ipsec)
lw6d: ISAKMP (0:2): sending packet to 192.168.60.34 (R) CONF_ADDR
lw6d: ISAKMP (0:2): deleting node 398811763 error FALSE reason ""
lw6d: ISAKMP (0:2): Input = IKE_MSG_FROM_AAA, IKE_AAA_GROUP_ATTR
Old State = IKE_CONFIG_AUTHOR_AAA_AWAIT New State = IKE_P1_COMPLETE

lw6d: AAA/MEMORY: free_user (0x812F79FC) user='vpngroup'
ruser='NULL' port='ISAKMP-GROUP-AUTH' rem_addr='192.168.60.34'
authen_type=NONE service=LOGIN priv=0
lw6d: ISAKMP (0:2): received packet from 192.168.60.34 (R) QM_IDLE
lw6d: CryptoEngine0: CRYPTO_ISA_IKE_DECRYPT(hw)(ipsec)
lw6d: CryptoEngine0: generate hmac context for conn id 2
lw6d: CryptoEngine0: CRYPTO_ISA_IKE_HMAC(hw)(ipsec)
lw6d: ISAKMP (0:2): processing HASH payload. message ID = 1369459046
lw6d: ISAKMP (0:2): processing SA payload. message ID = 1369459046
lw6d: ISAKMP (0:2): Checking IPsec proposal 1
lw6d: ISAKMP: transform 1, ESP_3DES
lw6d: ISAKMP: attributes in transform:
lw6d: ISAKMP: authenticator is HMAC-MD5
lw6d: ISAKMP: encaps is 1
lw6d: ISAKMP: SA life type in seconds
lw6d: ISAKMP: SA life duration (VPI) of 0x0 0x20 0xC4 0x9B
lw6d: validate proposal 0
lw6d: IPSEC(validate_proposal): transform proposal
(proto 3, trans 3, hmac_alg 1) not supported
```

lw6d: ISAKMP (0:2): atts not acceptable. Next payload is 0
lw6d: ISAKMP (0:2): skipping next ANDED proposal (1)
lw6d: ISAKMP (0:2): Checking IPsec proposal 2
lw6d: ISAKMP: transform 1, ESP_3DES
lw6d: ISAKMP: attributes in transform:
lw6d: ISAKMP: authenticator is HMAC-SHA
lw6d: ISAKMP: encaps is 1
lw6d: ISAKMP: SA life type in seconds
lw6d: ISAKMP: SA life duration (VPI) of 0x0 0x20 0xC4 0x9B
lw6d: validate proposal 0
lw6d: ISAKMP (0:2): atts are acceptable.
lw6d: ISAKMP (0:2): Checking IPsec proposal 2
lw6d: ISAKMP (0:2): transform 1, IPsec LZS
lw6d: ISAKMP: attributes in transform:
lw6d: ISAKMP: encaps is 1
lw6d: ISAKMP: SA life type in seconds
lw6d: ISAKMP: SA life duration (VPI) of 0x0 0x20 0xC4 0x9B
lw6d: IPSEC(validate_proposal): transform proposal
 (prot 4, trans 3, hmac_alg 0) not supported
lw6d: ISAKMP (0:2): atts not acceptable. Next payload is 0
lw6d: ISAKMP (0:2): Checking IPsec proposal 3
lw6d: ISAKMP: transform 1, ESP_3DES
lw6d: ISAKMP: attributes in transform:
lw6d: ISAKMP: authenticator is HMAC-MD5
lw6d: ISAKMP: encaps is 1
lw6d: ISAKMP: SA life type in seconds
lw6d: ISAKMP: SA life duration (VPI) of 0x0 0x20 0xC4 0x9B
lw6d: validate proposal 0
lw6d: IPSEC(validate_proposal): transform proposal
 (prot 3, trans 3, hmac_alg 1) not supported
lw6d: ISAKMP (0:2): atts not acceptable. Next payload is 0
lw6d: ISAKMP (0:2): Checking IPsec proposal 4
lw6d: ISAKMP: transform 1, ESP_3DES
lw6d: ISAKMP: attributes in transform:
lw6d: ISAKMP: authenticator is HMAC-SHA
lw6d: ISAKMP: encaps is 1
lw6d: ISAKMP: SA life type in seconds
lw6d: ISAKMP: SA life duration (VPI) of 0x0 0x20 0xC4 0x9B
lw6d: validate proposal 0
lw6d: ISAKMP (0:2): atts are acceptable.
lw6d: IPSEC(validate_proposal_request): proposal part #1,
 (key eng. msg.) INBOUND local= 172.18.124.158,
 remote= 192.168.60.34, local_proxy= 172.18.124.158/255.255.255.255/0/0
 (type=1), remote_proxy= 10.1.1.114/255.255.255.255/0/0 (type=1),
 protocol= ESP, transform= esp-3des esp-sha-hmac , lifedur= 0s and 0kb,
 spi= 0x0(0), conn_id= 0, keysize= 0, flags= 0x4
lw6d: validate proposal request 0
lw6d: ISAKMP (0:2): processing NONCE payload. message ID = 1369459046
lw6d: ISAKMP (0:2): processing ID payload. message ID = 1369459046
lw6d: ISAKMP (0:2): processing ID payload. message ID = 1369459046
lw6d: ISAKMP (0:2): asking for 1 spis from ipsec
lw6d: ISAKMP (0:2): Node 1369459046, Input = IKE_MSG_FROM_PEER, IKE_QM_EXCH
Old State = IKE_QM_READY New State = IKE_QM_SPI_STARVE

lw6d: IPSEC(key_engine): got a queue event...
lw6d: IPSEC(spi_response): getting spi 1640315492 for SA
 from 172.18.124.158 to 192.168.60.34 for prot 3
lw6d: ISAKMP: received ke message (2/1)
lw6d: CryptoEngine0: generate hmac context for conn id 2
lw6d: CryptoEngine0: CRYPTO_ISA_IKE_HMAC(hw)(ipsec)

```

lw6d: CryptoEngine0: CRYPTO_ISA_IKE_ENCRYPT(hw)(ipsec)
lw6d: ISAKMP (0:2): sending packet to 192.168.60.34 (R) QM_IDLE
lw6d: ISAKMP (0:2): Node 1369459046,
    Input = IKE_MSG_FROM_IPSEC, IKE_SPI_REPLY
Old State = IKE_QM_SPI_STARVE New State = IKE_QM_R_QM2

lw6d: ISAKMP (0:2): received packet from 192.168.60.34 (R) QM_IDLE
lw6d: CryptoEngine0: CRYPTO_ISA_IKE_DECRYPT(hw)(ipsec)
lw6d: CryptoEngine0: generate hmac context for conn id 2
lw6d: CryptoEngine0: CRYPTO_ISA_IKE_HMAC(hw)(ipsec)
lw6d: ipsec allocate flow 0
lw6d: ipsec allocate flow 0
lw6d: CryptoEngine0: CRYPTO_ISA_IPSEC_KEY_CREATE(hw)(ipsec)
lw6d: CryptoEngine0: CRYPTO_ISA_IPSEC_KEY_CREATE(hw)(ipsec)
lw6d: ISAKMP (0:2): Creating IPsec SAs
lw6d: inbound SA from 192.168.60.34 to 172.18.124.158
    (proxy 10.1.1.114 to 172.18.124.158)
lw6d: has spi 0x61C53A64 and conn_id 200 and flags 4
lw6d: lifetime of 2147483 seconds
lw6d: outbound SA from 172.18.124.158 to 192.168.60.34
    (proxy 172.18.124.158 to 10.1.1.114 )
lw6d: has spi -1885622177 and conn_id 201 and flags C
lw6d: lifetime of 2147483 seconds
lw6d: ISAKMP (0:2): deleting node 1369459046 error FALSE
    reason "quick mode done (await())"
lw6d: ISAKMP (0:2): Node 1369459046,
    Input = IKE_MSG_FROM_PEER, IKE_QM_EXCH
Old State = IKE_QM_R_QM2 New State = IKE_QM_PHASE2_COMPLETE

lw6d: IPSEC(key_engine): got a queue event...
lw6d: IPSEC(initialize_sas): ,
    (key eng. msg.) INBOUND local= 172.18.124.158,
    remote= 192.168.60.34, local_proxy= 172.18.124.158/0.0.0.0/0/0
    (type=1), remote_proxy= 10.1.1.114/0.0.0.0/0/0 (type=1),
    protocol= ESP, transform= esp-3des esp-sha-hmac ,
    lifedur= 2147483s and 0kb, spi= 0x61C53A64(1640315492),
    conn_id= 200, keysize= 0, flags= 0x4
lw6d: IPSEC(initialize_sas): , (key eng. msg.)
    OUTBOUND local= 172.18.124.158, remote= 192.168.60.34,
    local_proxy= 172.18.124.158/0.0.0.0/0/0 (type=1),
    remote_proxy= 10.1.1.114/0.0.0.0/0/0 (type=1),
    protocol= ESP, transform= esp-3des esp-sha-hmac ,
    lifedur= 2147483s and 0kb, spi= 0x8F9BB05F(2409345119),
    conn_id= 201, keysize= 0, flags= 0xC
lw6d: IPSEC(create_sa): sa created, (sa) sa_dest= 172.18.124.158,
    sa_prot= 50, sa_spi= 0x61C53A64(1640315492),
    sa_trans= esp-3des esp-sha-hmac , sa_conn_id= 200
lw6d: IPSEC(create_sa): sa created, (sa) sa_dest= 192.168.60.34,
    sa_prot= 50, sa_spi= 0x8F9BB05F(2409345119),
    sa_trans= esp-3des esp-sha-hmac , sa_conn_id= 201

```

Client Logs

In order to view the logs, launch the Log Viewer on the VPN Client, and set the filter to *High* for all the configured classes.

Sample log output is shown here.

1 11:56:06.609 06/05/02 Sev=Info/6 DIALER/0x63300002
Initiating connection.

2 11:56:06.609 06/05/02 Sev=Info/4 CM/0x63100002
Begin connection process

3 11:56:06.609 06/05/02 Sev=Info/4 CM/0x63100004
Establish secure connection using Ethernet

4 11:56:06.609 06/05/02 Sev=Info/4 CM/0x63100026
Attempt connection with server "172.18.124.158"

5 11:56:06.609 06/05/02 Sev=Info/6 IKE/0x6300003B
Attempting to establish a connection with 172.18.124.158.

6 11:56:06.669 06/05/02 Sev=Info/4 IKE/0x63000013
SENDING >>> ISAKMP OAK AG (SA, KE, NON, ID, VID, VID, VID) to 172.18.124.158

7 11:56:07.250 06/05/02 Sev=Info/5 IKE/0x6300002F
Received ISAKMP packet: peer = 172.18.124.158

8 11:56:07.250 06/05/02 Sev=Info/4 IKE/0x63000014
RECEIVING <<< ISAKMP OAK AG (SA, VID, VID, VID, VID, KE, ID, NON, HASH) from
172.18.124.158

9 11:56:07.250 06/05/02 Sev=Info/5 IKE/0x63000059
Vendor ID payload = 12F5F28C457168A9702D9FE274CC0100

10 11:56:07.250 06/05/02 Sev=Info/5 IKE/0x63000001
Peer is a Cisco-Unity compliant peer

11 11:56:07.250 06/05/02 Sev=Info/5 IKE/0x63000059
Vendor ID payload = AFCAD71368A1F1C96B8696FC77570100

12 11:56:07.250 06/05/02 Sev=Info/5 IKE/0x63000001
Peer supports DPD

13 11:56:07.250 06/05/02 Sev=Info/5 IKE/0x63000059
Vendor ID payload = 0A0E5F2A15C0B2F2A41B00897B816B3C

14 11:56:07.250 06/05/02 Sev=Info/5 IKE/0x63000059
Vendor ID payload = 09002689DFD6B712

15 11:56:07.280 06/05/02 Sev=Info/4 IKE/0x63000013
SENDING >>> ISAKMP OAK AG *(HASH, NOTIFY:STATUS_INITIAL_CONTACT) to
172.18.124.158

16 11:56:07.320 06/05/02 Sev=Info/5 IKE/0x6300002F
Received ISAKMP packet: peer = 172.18.124.158

17 11:56:07.320 06/05/02 Sev=Info/4 IKE/0x63000014
RECEIVING <<< ISAKMP OAK INFO *(HASH, NOTIFY:STATUS_RESP_LIFETIME) from
172.18.124.158

18 11:56:07.320 06/05/02 Sev=Info/5 IKE/0x63000044
RESPONDER-LIFETIME notify has value of 86400 seconds

19 11:56:07.320 06/05/02 Sev=Info/5 IKE/0x63000046
This SA has already been alive for 1 seconds, setting expiry to 86399 seconds
from now

20 11:56:07.561 06/05/02 Sev=Info/5 IKE/0x6300002F
Received ISAKMP packet: peer = 172.18.124.158

21 11:56:07.561 06/05/02 Sev=Info/4 IKE/0x63000014
RECEIVING <<< ISAKMP OAK TRANS *(HASH, ATTR) from 172.18.124.158

22 11:56:07.561 06/05/02 Sev=Info/4 CM/0x63100015
Launch xAuth application

23 11:56:07.571 06/05/02 Sev=Info/4 IPSEC/0x63700014
Deleted all keys

24 11:56:09.734 06/05/02 Sev=Info/4 CM/0x63100017
xAuth application returned

25 11:56:09.734 06/05/02 Sev=Info/4 IKE/0x63000013
SENDING >>> ISAKMP OAK TRANS *(HASH, ATTR) to 172.18.124.158

26 11:56:10.174 06/05/02 Sev=Info/5 IKE/0x6300002F
Received ISAKMP packet: peer = 172.18.124.158

27 11:56:10.184 06/05/02 Sev=Info/4 IKE/0x63000014
RECEIVING <<< ISAKMP OAK TRANS *(HASH, ATTR) from 172.18.124.158

28 11:56:10.184 06/05/02 Sev=Info/4 CM/0x6310000E
Established Phase 1 SA. 1 Phase 1 SA in the system

29 11:56:10.184 06/05/02 Sev=Info/4 IKE/0x63000013
SENDING >>> ISAKMP OAK TRANS *(HASH, ATTR) to 172.18.124.158

30 11:56:10.204 06/05/02 Sev=Info/5 IKE/0x6300005D
Client sending a firewall request to concentrator

31 11:56:10.204 06/05/02 Sev=Info/5 IKE/0x6300005C
Firewall Policy: Product=Cisco Integrated Client, Capability= (Centralized
Policy Push).

32 11:56:10.204 06/05/02 Sev=Info/4 IKE/0x63000013
SENDING >>> ISAKMP OAK TRANS *(HASH, ATTR) to 172.18.124.158

33 11:56:10.265 06/05/02 Sev=Info/5 IKE/0x6300002F
Received ISAKMP packet: peer = 172.18.124.158

34 11:56:10.265 06/05/02 Sev=Info/4 IKE/0x63000014
RECEIVING <<< ISAKMP OAK TRANS *(HASH, ATTR) from 172.18.124.158

35 11:56:10.265 06/05/02 Sev=Info/5 IKE/0x63000010
MODE_CFG_REPLY: Attribute = INTERNAL_IPV4_ADDRESS: , value = 10.1.1.114

36 11:56:10.265 06/05/02 Sev=Info/5 IKE/0x63000010
MODE_CFG_REPLY: Attribute = INTERNAL_IPV4_DNS(1): , value = 10.1.1.10

37 11:56:10.265 06/05/02 Sev=Info/5 IKE/0x63000010
MODE_CFG_REPLY: Attribute = INTERNAL_IPV4_NBNS(1) (a.k.a. WINS) : , value =
10.1.1.20

38 11:56:10.265 06/05/02 Sev=Info/5 IKE/0xA3000017
MODE_CFG_REPLY: The received (INTERNAL_ADDRESS_EXPIRY) attribute and value
(86396) is not supported

39 11:56:10.265 06/05/02 Sev=Info/5 IKE/0x6300000E
MODE_CFG_REPLY: Attribute = APPLICATION_VERSION,
value = Cisco Internetwork Operating System Software
IOS (tm) C1700 Software (C1710-K9O3SY-M), Version 12.2(8)T1,
RELEASE SOFTWARE (fc2)
TAC Support: <http://www.cisco.com/tac>
Copyright (c) 1986-2002 by cisco Systems, Inc.
Compiled Sat 30-Mar-02 13:30 by ccai

40 11:56:10.265 06/05/02 Sev=Info/5 IKE/0x6300000E
MODE_CFG_REPLY: Attribute = MODECFG_UNITY_DEFDOMAIN: , value = cisco.com

41 11:56:10.265 06/05/02 Sev=Info/5 IKE/0x6300000D
MODE_CFG_REPLY: Attribute = MODECFG_UNITY_SPLIT_INCLUDE (# of split_nets),
value = 0x00000001

42 11:56:10.265 06/05/02 Sev=Info/5 IKE/0x6300000F
SPLIT_NET #1
subnet = 10.38.0.0
mask = 255.255.0.0
protocol = 0
src port = 0
dest port=0

43 11:56:10.265 06/05/02 Sev=Info/4 CM/0x63100019
Mode Config data received

44 11:56:10.275 06/05/02 Sev=Info/5 IKE/0x63000055
Received a key request from Driver for IP address 172.18.124.158, GW IP =
172.18.124.158

45 11:56:10.275 06/05/02 Sev=Info/4 IKE/0x63000013
SENDING >>> ISAKMP OAK QM *(HASH, SA, NON, ID, ID) to 172.18.124.158

46 11:56:10.575 06/05/02 Sev=Info/4 IPSEC/0x63700014
Deleted all keys

47 11:56:10.605 06/05/02 Sev=Info/5 IKE/0x6300002F
Received ISAKMP packet: peer = 172.18.124.158

48 11:56:10.605 06/05/02 Sev=Info/4 IKE/0x63000014
RECEIVING <<< ISAKMP OAK QM *(HASH, SA, NON, ID, ID,
NOTIFY:STATUS_RESP_LIFETIME) from 172.18.124.158

49 11:56:10.605 06/05/02 Sev=Info/5 IKE/0x63000044
RESPONDER-LIFETIME notify has value of 3600 seconds

50 11:56:10.605 06/05/02 Sev=Info/5 IKE/0x63000045
RESPONDER-LIFETIME notify has value of 4608000 kb

51 11:56:10.605 06/05/02 Sev=Info/4 IKE/0x63000013
SENDING >>> ISAKMP OAK QM *(HASH) to 172.18.124.158

52 11:56:10.605 06/05/02 Sev=Info/5 IKE/0x63000058
Loading IPsec SA (Message ID = 0x51A04966 OUTBOUND SPI = 0x61C53A64 INBOUND
SPI = 0x8F9BB05F)

53 11:56:10.605 06/05/02 Sev=Info/5 IKE/0x63000025
Loaded OUTBOUND ESP SPI: 0x61C53A64

54 11:56:10.605 06/05/02 Sev=Info/5 IKE/0x63000026
Loaded INBOUND ESP SPI: 0x8F9BB05F

55 11:56:10.605 06/05/02 Sev=Info/4 CM/0x6310001A
One secure connection established

56 11:56:10.625 06/05/02 Sev=Info/6 DIALER/0x63300003
Connection established.

57 11:56:10.735 06/05/02 Sev=Info/6 DIALER/0x63300008
MAPI32 Information - Outlook not default mail client

58 11:56:11.677 06/05/02 Sev=Info/4 IPSEC/0x63700010
Created a new key structure

59 11:56:11.677 06/05/02 Sev=Info/4 IPSEC/0x6370000F
Added key with SPI=0x643ac561 into key list

60 11:56:11.677 06/05/02 Sev=Info/4 IPSEC/0x63700010
Created a new key structure

61 11:56:11.677 06/05/02 Sev=Info/4 IPSEC/0x6370000F
Added key with SPI=0x5fb09b8f into key list

NetPro Discussion Forums - Featured Conversations

Networking Professionals Connection is a forum for networking professionals to share questions, suggestions, and information about networking solutions, products, and technologies. The featured links are some of the most recent conversations available in this technology.

NetPro Discussion Forums - Featured Conversations for VPN
Service Providers: VPN Service Architectures
REALLY WIERD vpn multiple connecion problem - Feb 8, 2007 Dynamic Routing on ADSL MPLS VPN - Feb 8, 2007 VPN - bytes recd 0 ?? - Feb 7, 2007 alternative to permit-ipsec, not using PIX - Feb 6, 2007 VPN Connection partionally functional - Feb 6, 2007
Service Providers: Network Management
Java exceptions during restorebackup.pl - Feb 9, 2007 Generate inventory reports on LMS 2.6 - Feb 8, 2007 Device Management accross WAN - Feb 8, 2007 Ciscoworks and vulnerable IOS software - Feb 8, 2007 ARP table size mib for Cat6509 - Feb 8, 2007
Virtual Private Networks: Security
VPN and Dial-in solution - Feb 9, 2007 ASA VPN configuration for Hub & Spoke using OSPF - Feb 8, 2007 Cisco 3000 Concentrator - security question - Feb 8, 2007 VPN and Dial-in solution - Feb 8, 2007 Log all detailed VPN session - Feb 8, 2007
Virtual Private Networks: General

[Stateful firewall for VPN client on Vista](#) - Feb 9, 2007
[Automatically make network shares when making VPN connection](#) - Feb 9, 2007
[IPsec](#) - Feb 9, 2007
[What ports to forward over my PIX for remote VPN.](#) - Feb 8, 2007
[remote VPN steps](#) - Feb 8, 2007

Related Information

- [Terminal Access Controller Access Control System \(TACACS+\) Support](#)
 - [Cisco IOS Software Configuration Documentation](#)
 - [Cisco Secure Access Control Server for Unix Support](#)
 - [Cisco Secure ACS for UNIX Documentation](#)
 - [Cisco Secure ACS for Windows Support](#)
 - [Cisco Secure ACS for Windows Documentation](#)
 - [Cisco VPN Client Support](#)
 - [IPSec Negotiation/IKE Protocols Support](#)
 - [Technical Support & Documentation - Cisco Systems](#)
-

Home	How to Buy	Login	Profile	Feedback	Site Map	Help
----------------------	----------------------------	-----------------------	-------------------------	--------------------------	--------------------------	----------------------

All contents are Copyright ? 1992-2006 Cisco Systems, Inc. All rights reserved. [Important Notices](#) and [Privacy Statement](#).