

# How to Determine Which Service Pack is Installed on Microsoft Windows NT 4.0 and Windows 2000

Document ID: 20516

## Contents

### Introduction

#### Prerequisites

- Requirements

- Components Used

- Conventions

#### Microsoft Service Packs

#### Determine the Service Pack Installed

- Method One

- Method Two

#### Related Information

## Introduction

This document explains how to ascertain which Microsoft Windows Operating System and Service Pack is installed on your Cisco Intelligent Contact Management (ICM) computer.

## Prerequisites

### Requirements

Cisco recommends that you have knowledge of these topics:

- How to troubleshoot Microsoft Windows

### Components Used

The information in this document is based on these software and hardware versions:

- Microsoft Windows NT 4.0 and Windows 2000

The information in this document was created from the devices in a specific lab environment. All of the devices used in this document started with a cleared (default) configuration. If your network is live, make sure that you understand the potential impact of any command.

### Conventions

Refer to Cisco Technical Tips Conventions for more information on document conventions.

## Microsoft Service Packs

Service packs are the means by which Microsoft Windows product updates are distributed. Service packs keep the product current, and extend and update the functionality of your computer. Service packs include updates, system administration tools, drivers, and additional components. All are conveniently bundled so that you can

easily download them. Service packs are cumulative. This means that each new service pack contains all the fixes in previous service packs, and any new fixes.

## Determine the Service Pack Installed

There are two methods to determine which Microsoft Windows Service Pack is installed on an individual Cisco ICM system. Choose the method that best suits you.

### Method One

Complete these steps:

1. From a command prompt or from the Run dialog box, type **winver**, and press ENTER.

**Figure 1 The winver Command**



2. Based on the version of Microsoft Windows installed, either the About Windows NT dialog box (Figure 2) or the About Windows dialog box (Figure 3) appears. The dialog box shows the version, build, and Service Pack installed.

**Figure 2 Microsoft Windows NT**



**Figure 3 Microsoft Windows 2000**

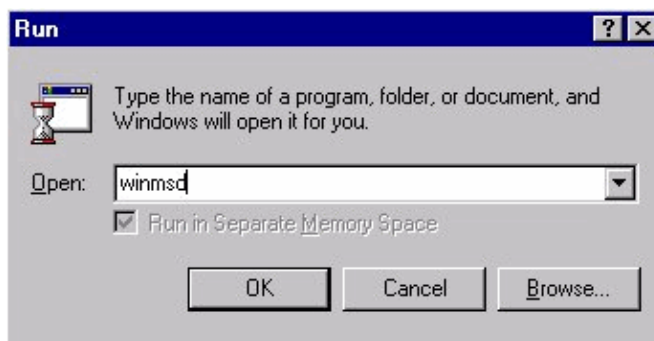


## Method Two

Complete these steps:

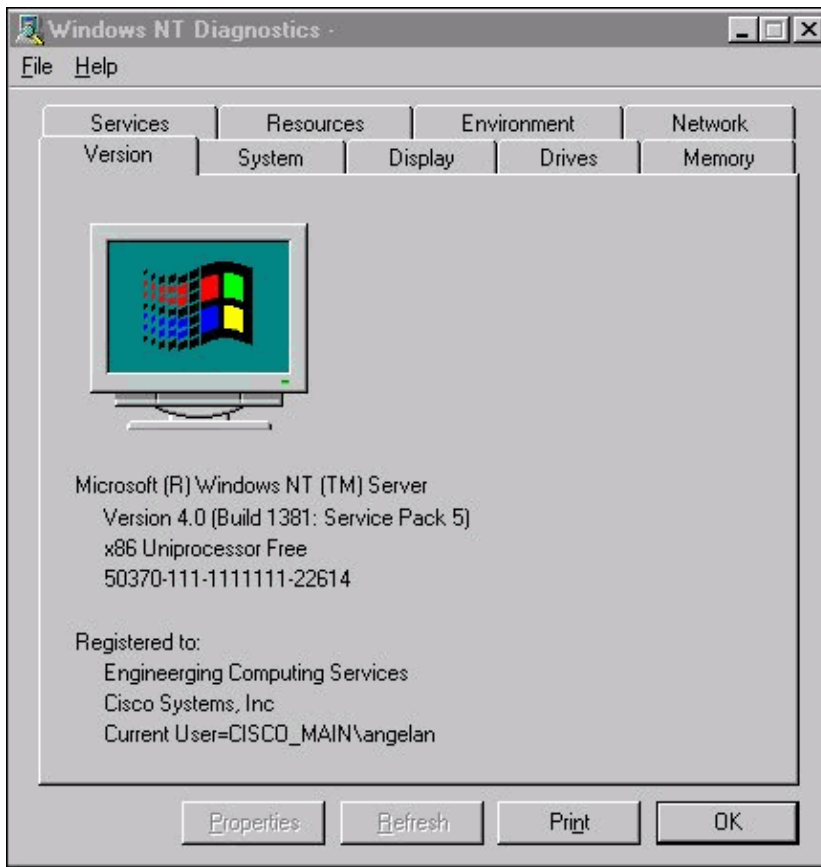
1. In a command prompt or in the Run dialog box, type **winmsd**, and press ENTER.

**Figure 4 The winmsd Command**



For Microsoft Windows NT, the Diagnostics dialog box appears:

**Figure 5 Windows NT Diagnostics Dialog Box**

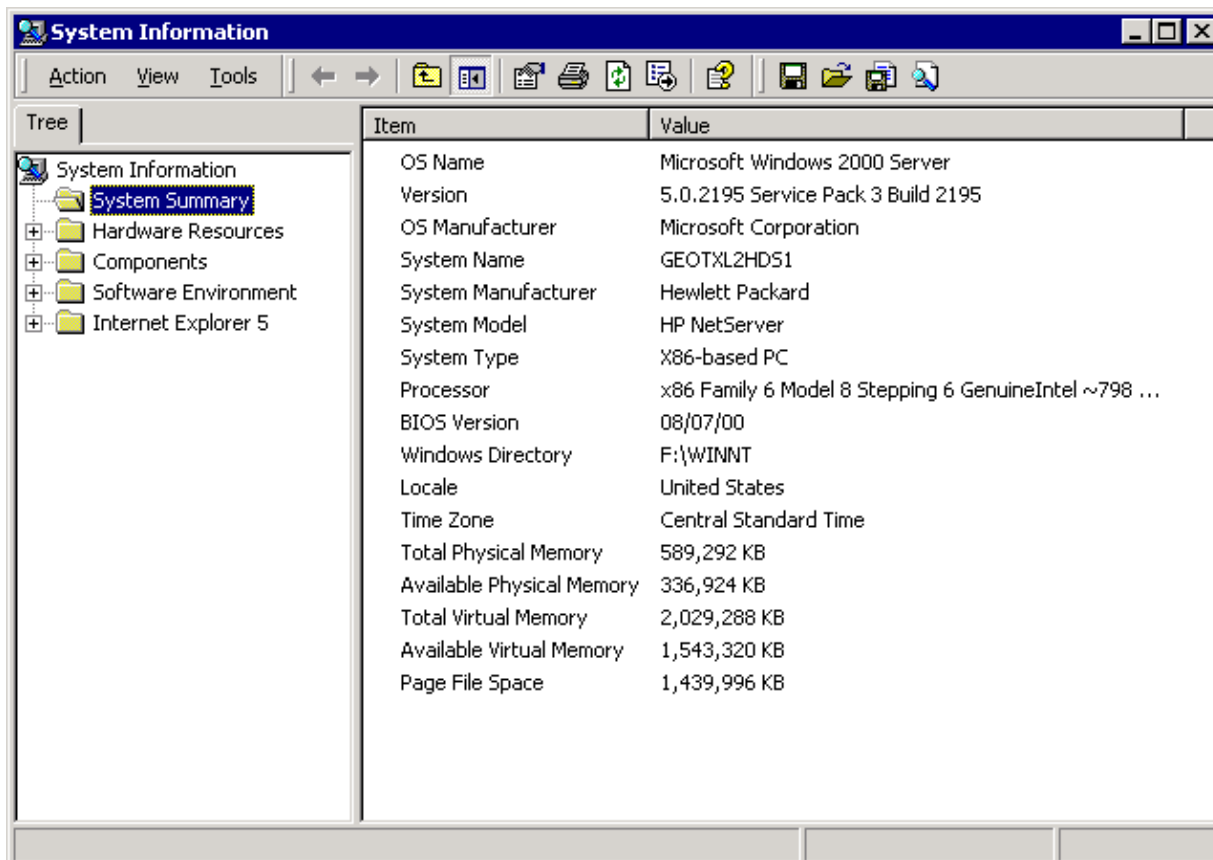


Click the **V**ersion tab. This tab displays information about the Service Pack version installed.

In the example in Figure 5, Service Pack 5 is installed.

2. For Microsoft Windows 2000, the System Information dialog box appears:

**Figure 6 System Information Dialog Box**



The System Summary folder is the default folder that appears. See the Version item for the latest Service Pack version installed.

You must keep up with the latest Microsoft Windows NT Service Pack, but even more importantly, use the correct Service Pack with the version of Cisco ICM. In order to determine the correct Service Pack for your system, see the Bill of Materials.

When you have determined the correct Service Pack for your Cisco ICM node, you can obtain it from the Microsoft Service Pack Download Center .

---

## Related Information

- **Bill of Materials**
- **Microsoft Service Pack Download Center**
- **Technical Support & Documentation – Cisco Systems**

---

[Contacts & Feedback](#) | [Help](#) | [Site Map](#)

© 2009 – 2010 Cisco Systems, Inc. All rights reserved. [Terms & Conditions](#) | [Privacy Statement](#) | [Cookie Policy](#) | [Trademarks of Cisco Systems, Inc.](#)

---

Updated: Apr 06, 2005

Document ID: 20516

---