

Hardware Troubleshooting for the Cisco 2600 Series Router

Document ID: 16138

Interactive: This document offers customized analysis of your Cisco device.

Contents

Introduction

Prerequisites

- Requirements
- Hardware–Software Compatibility and Memory Requirements
- Error Messages
- Conventions

Modules and Cards

- Troubleshooting Modem Modules

Identifying the Issue

- Troubleshooting Serial Interfaces
- Troubleshooting ISDN Interfaces
- Troubleshooting Memory Problems
- Troubleshooting Router Hangs

Router Reboot/Reload

- Router Crashes
- Bus Error Crashes

Continuous/Boot Loop

- Identifying a Continuous/Boot Loop Due to a Wrong Iomem Size
- Troubleshooting Flowchart
- Bus Error Exception
- SegV Exception
- %ERR-1-GT64010
- Corrupt Software Image
- Watchdog Timeouts

Router Does Not Boot

- LEDs on after powerup; nothing on console
- Router boots to ROMmon; no error messages on the console
- Router boots to ROMmon; error messages on the console
- Router stops booting after receiving error message

Router Is Dropping Packets

- Ethernet Interfaces
- Ignored Packets
- Input and Output Queue Drops

Router Loses Configuration due to Faulty or Corrupt NVRAM

Information to Collect if You Open a TAC Service Request

Related Information

Introduction

Valuable time and resources are often wasted replacing hardware that actually functions properly. This document helps troubleshoot potential hardware issues with Cisco 2600 series routers, and can help you

identify which component may be causing a hardware failure, depending on the type of error that the router is experiencing.

Note: This document does not cover any software–related failures except for those that are often mistaken as hardware issues.

Prerequisites

Requirements

Readers of this document should be knowledgeable of the following:

- Cisco 2600 Series Routers Hardware Installation Guide
- Troubleshooting Router Crashes
- 2600 Series Router Field Notices

Hardware–Software Compatibility and Memory Requirements

Whenever you install a new card, module or Cisco IOS® software image, it is important to verify that the router has enough memory, and that the hardware and software are compatible with the features you wish to use.

Perform the following recommended steps to check for hardware–software compatibility and memory requirements:

1. Use the Software Advisor (registered customers only) tool to choose software for your network device.
2. Use the Download Software Area (registered customers only) to check the minimum amount of memory (RAM and Flash) required by the Cisco IOS software, and/or download the Cisco IOS software image. To determine the amount of memory (RAM and Flash) installed on your router, refer to the *Memory Requirements* section of How to Choose a Cisco IOS Software Release.

Tip: If you want to keep the same features as the version that is currently running on your router, but don't know which feature set you are using, enter the **show version** command from your Cisco device, and paste it in the Output Interpreter Tool. You can use the Output Interpreter [☐](#) (registered customers only) to display potential issues and fixes. To use the Output Interpreter [☐](#) (registered customers only), you must be logged in and have JavaScript enabled.

Tip: If you need to upgrade the Cisco IOS software image to a new version or feature set, you can refer to How to Choose a Cisco IOS Software Release for more information.

3. If you determine that a Cisco IOS software upgrade is required, follow the Software Installation and Upgrade Procedure for the Cisco 2600 Series Router.

Tip: If your 2600 doesn't have a connection to the network or does not have a valid Cisco IOS software image, you may need to use the console port of the router to perform an Xmodem Console Download Procedure Using ROMmon. This procedure does not require the use of a Trivial File Transfer Protocol (TFTP) server.

Error Messages

The Error Message Decoder tool (registered customers only) allows you to check the meaning of an error message. Error messages appear on the console of Cisco products, usually in the following form:

```
%XXX-n-YYYY : [text]
```

Following is an example error message:

```
Router# %SYS-2-MALLOCFAIL: Memory allocation of [dec] bytes failed from [hex],  
pool [chars], alignment [dec]
```

Some error messages are informational only, while others indicate hardware or software failures and require action. The Error Message Decoder Tool provides an explanation of the message, a recommended action (if needed), and if available, a link to a document that provides extensive troubleshooting information about that error message.

Conventions

For more information on document conventions, refer to the Cisco Technical Tips Conventions.

Modules and Cards

The documents below can help you verify which module/card is supported:

- For WAN Interface Card (WIC) compatibility information, refer to the WIC Hardware Compatibility Matrix.
- For Voice Interface Card (VIC) and Voice WAN Interface Card (VWIC) compatibility information, refer to the Voice Hardware Compatibility Matrix.
- Refer to Cisco 2600 Series Multiservice Platforms: Relevant Interfaces and Modules and Cisco Network Modules Hardware Installation Guide for more information.

Troubleshooting Modem Modules

The 2600 Series Router only supports the following internal analog modem components:

- WAN Interface Cards: WIC-1AM or WIC-2AM
- Modem Network Modules: NM-8AM, NM-16AM

Refer to the following documents for more details:

- Understanding Analog Modem Network Modules (NM-8AM / NM-16AM)
- Understanding Analog Modem WAN Interface Cards (WIC-1AM or WIC-2AM)

Note: The 2600 Series Router does not support any internal digital modems.

Identifying the Issue

In order to determine the cause, the first step is to capture as much information about the problem as possible. The following information is essential for determining the cause of the problem:

- Console logs (for more information, refer to Applying Correct Terminal Emulator Settings for Console Connections).
- Syslog information – If the router is set up to send logs to a syslog server, you may be able to obtain information on what happened. For details, refer to the *How to Configure Cisco Devices for Syslog* section of Resource Manager Essentials and Syslog Analysis: How-To.
- **show technical-support** command output – The **show technical-support** command is a compilation of many different commands including **show version**, **show running-config**, and **show**

stacks. TAC engineers usually ask for this information to troubleshoot hardware issues. It is important to collect the **show technical–support** information before doing a reload or power–cycle as these actions can cause all information about the problem to be lost.

- Complete bootup sequence if the router experiences boot errors.

If you have the output of a **show** command from your Cisco device (including **show technical–support**), you can use the Output Interpreter [↗](#) (registered customers only) to display potential issues and fixes. To use the Output Interpreter [↗](#) (registered customers only) , you must be logged in and have JavaScript enabled.

Troubleshooting Serial Interfaces

Here is a list of references to use for troubleshooting serial interfaces:

- T1 Troubleshooting Flowchart
- Troubleshooting Serial Lines
- Loopback Tests for T1/56K Lines

Troubleshooting ISDN Interfaces

Here is a list of references to use for troubleshooting ISDN interfaces:

- Troubleshooting ISDN Layer 1
- Troubleshooting ISDN Layer 2
- Troubleshooting ISDN Layer 3

Troubleshooting Memory Problems

If a 2600 router does not have enough memory, this can result in boot errors or other issues such as %SYS–2–MALLOCFAIL: Memory Allocation Failure errors.

Refer to the Identifying a Continuous/Boot Loop Due to a Wrong Iomem Size section to recover from this type of memory problem.

Troubleshooting Router Hangs

A 2600 Series Router may experience a router hang. A hang is when the router boots to a certain point and then no longer accepts any commands or keystrokes. In other words, the console screen hangs after a certain point. Hangs are not necessarily hardware issues and most of the time, they are a software issue. If your router is experiencing a router hang, refer to Troubleshooting Router Hangs.

Router Reboot/Reload

When the router reboots, it returns to a normal state. A "normal state" means that the router is functional, passing traffic, and that you are able to gain access to the router. To check why the router rebooted, issue the **show version** command and look at the output (see example below):

```
Router# show version
Router uptime is 20 weeks, 5 days, 33 minutes
System returned to ROM by power-on
```

Router Crashes

When we refer to a "system crash", we mean a situation where the system has detected an unrecoverable error and has restarted itself. A crash can be caused by software problems, hardware problems, or both. This section deals with hardware–caused crashes and crashes that are software–related, but may be mistaken for hardware problems.

IMPORTANT: If the router is reloaded after the crash (for example, through a power–cycle or the **reload** command), important information about the crash will be lost, so try to collect **show technical–support** and **show log** output, as well as the crashinfo file (if possible) before reloading the router!

Refer to Troubleshooting Router Crashes for more information regarding this issue.

Bus Error Crashes

The system encounters a bus error when the processor tries to access a memory location that either does not exist (a software error) or does not respond properly (a hardware problem). A bus error can be identified by looking at the output of the **show version** command provided by the router (if not power–cycled or manually reloaded).

Here are two examples of bus error crashes:

```
Router uptime is 2 days, 21 hours, 30 minutes
System restarted by bus error at PC 0x30EE546, address 0xBB4C4
System image file is "flash:igs-j-1.111-24.bin", booted via flash
.....
```

At the console prompt, the following error message might also be seen during a bus error:

```
*** System received a Bus Error exception ***
signal= 0xa, code= 0x8, context= 0x608c3a50
PC = 0x60368518, Cause = 0x20, Status Reg = 0x34008002
```

For more information regarding this issue, refer to Troubleshooting Bus Error Crashes.

Continuous/Boot Loop

The router may experience a continuous loop that could be due to a hardware issue. A continuous loop never lets you gain access to the router (for example, you won't be able to log in to enable mode, and so on), and the router continues to give scrolling error messages until it is powered off. Below are examples and troubleshooting steps to determine which piece of hardware is causing the continuous loop.

Identifying a Continuous/Boot Loop Due to a Wrong Iomem Size

The following symptoms might be observed on the console during the boot sequence:

```
Not enough memory in the system for IO memory
IO memory available 4110105 required 5242880 _> 2600
```

and/or

```
SYSTEM INIT: INSUFFICIENT MEMORY TO BOOT THE IMAGE!
```

and/or

```
Not enough memory in the system to run this image
Required pmem/iomem: 39435385/524288
*** System received a Software forced crash ***
```

Recovery Procedure

Step A

- If your router doesn't have enough Dynamic RAM (DRAM) memory, go to Step D.
- If your router has enough DRAM memory, go to Step B.

Step B

Follow the steps in the order outlined:

1. Turn the router off.
2. Remove all the Network Modules (NMs) and WAN Interface Cards (WICs) from the router.
3. Turn the router on.
4. If the router does not come up after removing the NM and WIC, go to Step C.

If it comes up fine, change the iomem configuration percentage..

```
Router#configure terminal
Router(config)#memory-size iomem 10

!-- The command above adjusts the percentage of DRAM to use for I/O Memory

Router(config)#exit
Router#copy running-config startup-config
Destination filename [startup-config]?
Building
[OK]
Router#
```

5. Turn the router off and reseal the NM and WIC cards.
6. Turn the router on. It should boot up fine with the NM and WIC cards.

Step C

Follow the steps as described below:

1. Attach a terminal or PC with terminal emulation to the console port of the router. Use the following terminal settings:

- ◆ 9600 baud rate
- ◆ No parity
- ◆ 8 data bits
- ◆ 1 stop bit
- ◆ No flow control

The required console cable specifications are described in Cabling Guide for Console and AUX Ports.

Using the power switch, turn the router off and then turn it back on.

2. Press Break on the terminal keyboard within 60 seconds of the power-up to put the router into ROMMON – diagnostic test mode.

Tip: If the break sequence does not work, refer to Standard Break Key Sequence Combinations During Password Recovery for other key combinations.

3. Type **confreg 0x2142** at the rommon 1> prompt to boot from Flash without loading the configuration.

4. Type **reset** at the rommon 2> prompt. The router reboots, but ignores its saved configuration. Thus, it ignores the **iomem** command and uses the default value.
5. Type **no** after each setup question, or press Ctrl-C to skip the initial setup procedure.
6. Type **enable** at the Router> prompt. This puts you in enable mode where you will see the Router# prompt.
7. **Note:** Do not type, at this point, **configure terminal**.

Type **copy startup-config running-config** to copy the non-volatile RAM (NVRAM) into memory.

8. Type **show running-config**. The **show running-config** command shows the configuration of the router. In this configuration, you can see the "memory-size iomem" line.
9. Type **configure terminal** and remove the **memory-size iomem** command, or change it to the correct one.

The prompt is now Router(config)#.

10. Type **config-register 0x2102**.
11. Press Ctrl-z or type **end** to leave the configuration mode.

The prompt is now Router#.

12. Type **copy running-config startup-config** to commit the changes.
13. Turn off the router, reseal the NM and WIC, and turn the router on again. It should boot up fine.

Step D

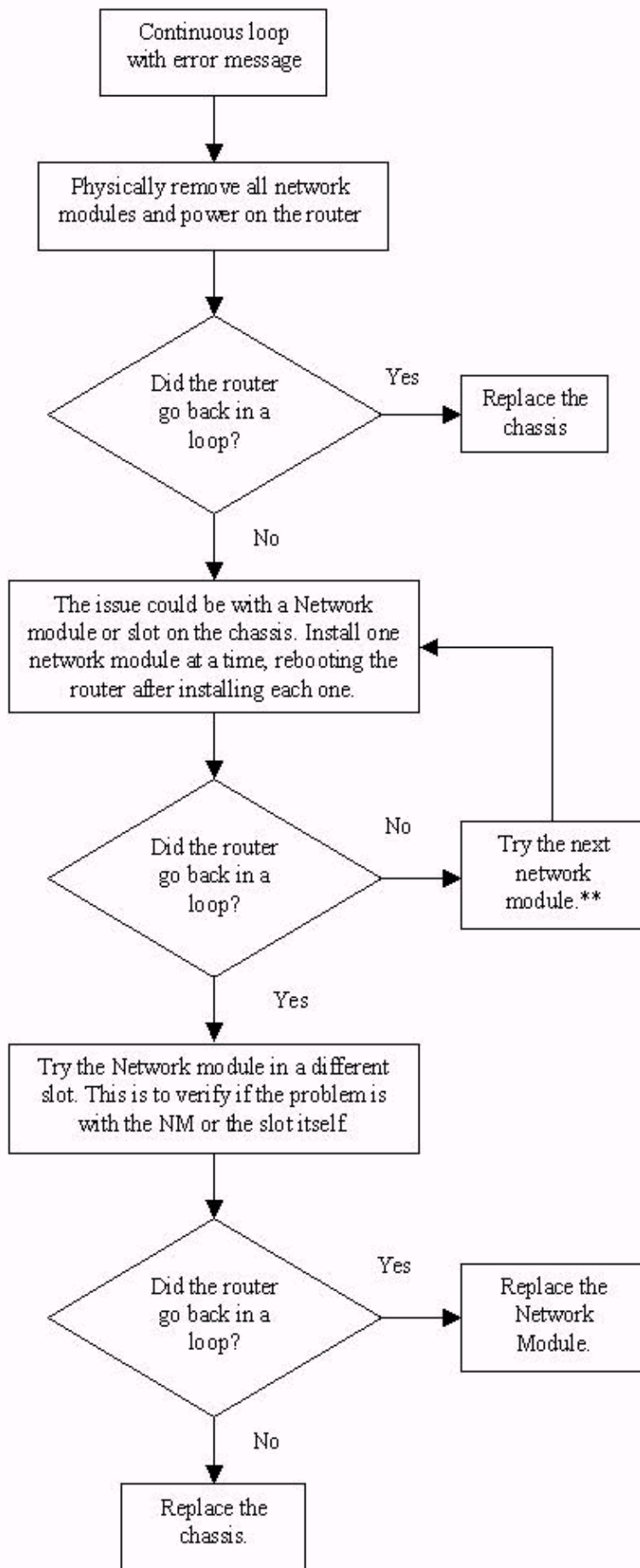
If your router doesn't have enough DRAM memory, you can:

- upgrade the DRAM memory of your router, or
- load a Cisco IOS software image in Flash which requires less I/O and processor memory

Refer to the Hardware-Software Compatibility and Memory Requirements section if you wish to load a new Cisco IOS software image.

Troubleshooting Flowchart

Below is a troubleshooting flowchart for Bus Error Exception, SegV Exception, %ERR-1-GT64010, and Watchdog Timeout continuous loops:



**If the router does not experience the continuous loop after following the troubleshooting steps above, then the problem may have been caused by a mis-seated network module. It is recommended that you monitor the router for 24 hours to be sure that the router continues to function without experiencing the issue again.

Bus Error Exception

Here is an example of a bus error exception message:

```
*** System received a Bus Error exception ***
signal= 0xa, code= 0xc, context= 0x61c67fc0
PC = 0x6043904c, Cause = 0x2420, Status Reg = 0x34018002
```

SegV Exception

If you don't power-cycle or manually reload the router, the **show version** output displays the following:

```
Router uptime is 2 days, 3 hours, 5 minutes
System restarted by error - a SegV exception, PC 0x80245F7C
System image file is "flash:c2600-js-mz.120-9.bin"
```

The following lines may also be present in the console logs:

```
*** System received a SegV exception ***
signal= 0xb, code= 0x1200, context= 0x80d15094
PC = 0x80678854, Vector = 0x1200, SP = 0x80fcf170
```

Refer to SegV Exceptions for more information regarding this issue.

%ERR-1-GT64010

This is an example of a %ERR-1-GT64010 error:

```
%ERR-1-GT64010: Fatal error, PCI Master read
cause=0x0120E483, mask=0x0CD01F00, real_cause=0x00000400
bus_err_high=0x00000000, bus_err_low=0x04080000, addr_decode_err=0x14000470
```

Corrupt Software Image

When booting, a router may detect that a Cisco IOS software image is corrupt, return the "compressed image checksum is incorrect" message and attempt to reload, reporting the event as a software-forced crash:

```
Error : compressed image checksum is incorrect 0x54B2C70A
Expected a checksum of 0x04B2C70A
```

```
*** System received a Software forced crash ***
signal= 0x17, code= 0x5, context= 0x0
PC = 0x800080d4, Cause = 0x20, Status Reg = 0x3041f003
```

This behavior can then repeat indefinitely, or the router may drop to the ROM monitor.

This can be caused by a Cisco IOS software image that has actually been corrupted during transfer to the router, in which case it can be resolved by loading a new image onto the router. Use Cisco Search to find a ROMmon recovery method for your platform.

It may also be caused by faulty memory hardware or by a software bug.

Watchdog Timeouts

Cisco processors have timers that guard against certain types of system hangs. The CPU periodically resets a watchdog timer. The watchdog timer basically controls the time of each process. If the timer is not reset, a trap occurs. If a process is longer than it should be, the watchdog timer is used to escape from this process.

There are two main types of watchdog timeouts. The first type is usually caused by a software problem and is reported in one or both of these ways:

- The **show version** command output shows:

```
"System returned to ROM by bus error at PC 0x602DADE0, address 0x480811"  
- or -  
"System returned to ROM by error - a Software forced crash, PC 0x60435894"
```

- The console logs show:

```
%SYS-2-WATCHDOG: Process aborted on watchdog timeout
```

The second type of watchdog timeout is usually due to a hardware problem and is reported in one or both of these two ways:

- The **show version** command output shows:

```
Router uptime is 17 minutes  
System returned to ROM by watchdog timer expired  
System image file is "flash:c3640-is-mz.122-3.bin"
```

- The console logs show:

```
System returned to ROM by watchdog timer expired  
*** Watch Dog Timeout ***  
PC = 0x800001b4, SP = 0x61e19590
```

Both of these are potential software issues and need further investigation based on their symptoms. Refer to [Troubleshooting Bus Error Crashes](#) or [Understanding Software–forced Crashes](#), depending on which one appears in the **show version** output. For more information on Watchdog Timeout crashes, refer to [Troubleshooting Watchdog Timeouts](#).

Router Does Not Boot

Capturing information from the console of the router is essential for troubleshooting a router that does not boot. The console output should be logged in a file for later analysis or for the Cisco Technical Assistance Center (TAC) if a TAC case is opened. Compare the following symptoms and recommended actions to take if you are encountering boot problems:

No LEDs on after powerup

Check whether the power cord is plugged in firmly and the power supply is good. If that does not resolve the issue, replace the power cord. If the problem persists, replace the router.

LEDs on after powerup; nothing on console

Verify that the baud rate is set to 9600 bps. If that doesn't help, verify that the equipment used for connecting to the console is operating properly. You can do this by connecting to a known good router to check your

console equipment. If the equipment is successfully tested, but the problem remains, replace the router.

Router boots to ROMmon; no error messages on the console

Set the configuration register to 0x2102 and reload the router:

```
rommon 1 > confreg 0x2102
rommon 2 > reset
```

If the router remains in ROMmon, follow the procedure described in ROMmon Recovery for the Cisco 2600 Series Router.

Router boots to ROMmon; error messages on the console

At bootup, one of the following errors may be seen:

- device does not contain a valid magic number
- boot: cannot open "flash:"
- boot: cannot determine first file name on device "flash:"
- Error : uncompressed image checksum is incorrect [hex value]

These mean that either the Flash is empty or the filesystem is corrupted.

To resolve this, copy a valid image onto the Flash. While copying, you will be prompted to erase the old contents of Flash (if any). Then reload the router. Refer to ROMmon Recovery for the Cisco 2600 Series Router for instructions on how to copy a valid image into Flash.

Router stops booting after receiving error message

During bootup, the router may display the error message "pre- and post-compression image sizes disagree" after which booting ceases.

Possible causes include:

- corrupted software image
- faulty Flash memory
- faulty DRAM
- bad memory slot

Begin troubleshooting this issue by copying a new image into Flash. Refer to ROMmon Recovery for the Cisco 2600 Series Router for instructions on how to copy a valid image into Flash.

If installing a new image fails to resolve the problem, you can try swapping out the memory. If replacing the Flash and DRAM fails to resolve the problem, there is a chance that the memory slot on the chassis is faulty; you need to use the TAC Service Request Tool (registered customers only) to create a service request in order to resolve the hardware issue.

Router Is Dropping Packets

Packet loss caused by hardware problems is fairly easy to identify. The following section uses the output of the **show interfaces** command to identify packet loss.

Cyclic Redundancy Check (CRC) and Frame Errors

If CRC errors or frame errors are constantly increasing on the interface, this usually indicates a hardware problem.

```
router#show interface ethernet 0/0
Ethernet0/0 is up, line protocol is up
...
121 input errors, 102 CRC, 19 frame, 0 overrun, 0 ignored
```

An exception to this is when CRC and frame errors are found on channelized interfaces; these can also indicate clocking problems. The fault that is causing the errors can be anywhere between two connected interfaces – on cables, intermediate devices, or on interfaces themselves. Troubleshooting techniques differ slightly for different interface types.

Ethernet Interfaces

For Ethernet interfaces, troubleshooting differs between a shared environment (devices connected through a hub or with a coaxial cable) and a switched environment (devices connected to a switch).

In a switched environment, there are only five components that could cause the error:

- cable
- local interface (port)
- remote interface (port)
- speed
- duplex mismatch

Consequently, the troubleshooting steps are simple. For example, if a router is connected to a switch, the troubleshooting steps would be:

1. Replace the cable.
2. If this does not solve the problem, try another port on the switch.
3. If the problem persists, replace the Ethernet interface.

In a shared environment, the source of the problem is a lot harder to find. Every piece of hardware that makes up the shared segment can be the cause. All components (cables, connectors, and so on) have to be tested one by one.

Ignored Packets

Packets are ignored if there are no free buffers to accept the new packet. This can happen if the router is overloaded with traffic, but can also happen if the interface is faulty.

```
router#show interfaces ethernet 0/0
Ethernet0/0 is up, line protocol is up
...
21 input errors, 0 CRC, 0 frame, 0 overrun, 21 ignored
```

If "ignores" are present on all interfaces, then the router is probably overloaded with traffic, or doesn't have sufficient free buffers in the pool that match the maximum transmission unit (MTU) on interfaces. In the latter case, an increment of the ignored counter is followed by an increment of the no buffer counter:

```
router#show interfaces serial 0/0
...
1567 packets input, 0 bytes, 22 no buffer
22 input errors, 0 CRC, 0 frame, 0 overrun, 22 ignored, 0 abort
```

You may also see an increase in the buffer failures counter in the pool that matches the MTU size:

```
router#show buffers
...
Big buffers, 1524 bytes (total 50, permanent 50):
50 in free list (5 min, 150 max allowed)
3066 hits, 189 misses, 0 trims, 24 created
12 failures (0 no memory)
```

The number of preconfigured permanent, free, and maximum allowed buffers may not be completely compatible for every environment. You can read more about this and how to avoid it in [Buffer Tuning](#).

If "ignores" are only increasing on one interface and are not followed by an increment of the no buffer counter, and the interface is not heavily loaded, then this interface could be faulty. In that case, capture the output of the **show tech-support** command and contact the TAC. The load on the interface can be viewed in the output of the **show interfaces** command:

```
router#show interfaces serial 0/0
...
reliability 255/255, txload 100/255, rxload 122/255
```

Input and Output Queue Drops

Input queue drops are never caused by hardware problems. Output queue drops may be caused by a hardware problem only if the output queue is constantly full and no packets are being sent out of the interface. You can read more about these kinds of drops in [Troubleshooting Input Queue Drops and Output Queue Drops](#).

Router Loses Configuration due to Faulty or Corrupt NVRAM

The router fails to load a previously saved configuration. One of the following error messages may be observed:

```
System Bootstrap, Version 11.1(8)CA1, EARLY DEPLOYMENT RELEASE SOFTWARE (fc1)
Copyright (c) 1997 by cisco Systems, Inc.
Warning: monitor nvram area is corrupt ... using default values

Warning: NVRAM size is 0

environment checksum in NVRAM failed

Router#show startup-config
%Error opening nvram:/startup-config (Invalid Checksum)
Router#
```

These error messages usually indicate a hardware failure. To verify, issue the **test memory** command. The following is an example of the command output:

```
Router#test memory
Test NVRAM card [y/n] ? y
Failed
```

The solution is to issue the **write erase** command and reload the router. If the issue persists, the hardware will need to be replaced.

When hardware replacement is indicated after troubleshooting, use one of the following options:

- If you have a hardware support contract directly with Cisco for this part, use the Service Order Submit Tool (registered customers only) to request a replacement part directly.
- For warranty service, contact the Cisco Technical Assistance Center (TAC) online by using the TAC Service Request Tool (registered customers only) .
- If your product is not covered by contract or warranty, contact your Cisco partner or reseller to request a replacement part for the hardware component that is causing the issue.

Information to Collect if You Open a TAC Service Request

If you have identified a component that needs to be replaced, contact your Cisco partner or reseller to request a replacement for the hardware component that is causing the issue. If you have a support contract directly with Cisco, use the TAC Service Request Tool (registered customers only) to open a TAC Service Request for a hardware replacement. Make sure you attach the following information:

- Console captures showing the error messages
- Console captures showing the troubleshooting steps taken and the boot sequence during each step
- The hardware component that failed and the serial number for the chassis
- Troubleshooting logs
- Output from the **show technical-support** command

Related Information

- [Understanding Software–forced Crashes](#)
- [Troubleshooting Hardware and Booting Problems](#)
- [Cisco 3600 Series Routers Documentation](#)
- [Cisco 3600 Series Router Product Support](#)
- [Cisco 2600 Series Routers Documentation](#)
- [Technical Support & Documentation – Cisco Systems](#)

[Contacts & Feedback](#) | [Help](#) | [Site Map](#)

© 2010 – 2011 Cisco Systems, Inc. All rights reserved. [Terms & Conditions](#) | [Privacy Statement](#) | [Cookie Policy](#) | [Trademarks of Cisco Systems, Inc.](#)

Updated: Mar 09, 2009

Document ID: 16138
