

# *Is your company looking to improve its network asset management?*

Businesses today are increasingly dependent on network communications for conducting their day-to-day operations.

And, as the complexity of the business grows, so does the challenge of managing your company's IT network. This situation becomes even more daunting when companies begin to focus on the management of the physical layer.

The primary challenge facing physical layer management is being able to monitor and control growing numbers of network resources across the entire expanse of the network; it is becoming more difficult to know where equipment is located, how it is connected to the network, and how often it is used. Keeping track of this equipment in a fast paced business environment like yours, can be an exercise in frustration. Yet, your company can ill-afford to lose the time, the money, and the productivity often associated with a chaotic physical layer.

## Discover the **PANVIEW™** Solution

At last, you have access to a single unified management system, that in real-time provides accurate, reliable, end-to-end documentation of your physical layer.

Discover the *PANVIEW* Solution. Through its interwoven mix of hardware and software, automatically tracks and updates your patch field database, freeing your technicians from this tedious and time-consuming chore. And, because it's done electronically, not manually, you know that your database is accurate 100% of the time, day or night. No more scrambling around to find out what port the other end of the patch cord is really connected to - the *PANVIEW* System has already provided the answer!

Besides monitoring the connectivity of your entire system, the *PANVIEW* System's *PANMAP™* technology lets you track the exact location of your network assets. The result is a reduction in your total cost of network ownership, better utilization of network resources, and minimized network downtime.

The *PANVIEW* Solution takes managing the physical layer to the next level. From providing information needed to help make strategic decisions about changing your infrastructure, adding or updating equipment, to guiding your technicians through the routine chore of handling the daily MACs within your network.

DISCOVER

**The *PANVIEW* Solution can do it all.**



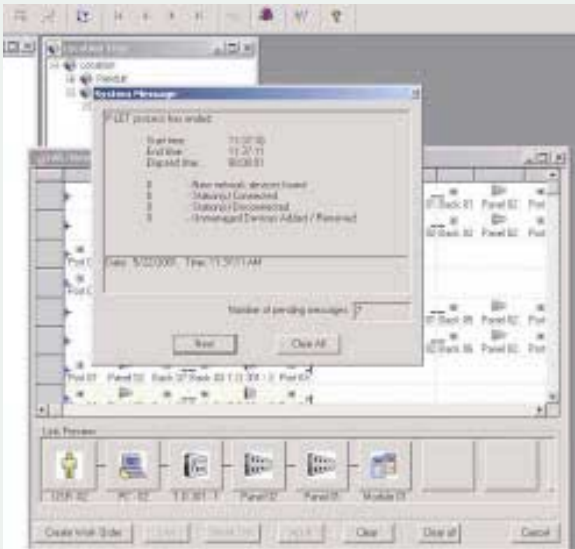
## Real Time System

The PANVIEW™ System routinely detects all the changes in the connectivity of your network. With the real-time system, scheduled changes are automatically documented and updated in the database. Unauthorized changes or product failures send an immediate alert to the appropriate personnel. Quite often, in cases like these, a solution is already in the works before the effected user can even place a call for help.

## Work Order Module

With just a few clicks of the mouse, the Network Administrator can plan all of the MACs for the entire network, prioritize their completion, and assign them to specific technicians. The system will then document the current status of the job, guide the technician through the changes using the LEDs on the patch panels, record the actual time needed to complete the task, and automatically update the database to reflect the new configuration.

Discover



# Features and Benefits

## Link Module

The *PANVIEW™* System provides a module with a graphic interface allowing the user to look at the entire link - end to end. With this module, the user can view any link in the system, modify the link, create a new link, or use this module in conjunction with the Work Order Module to easily create and schedule all of the MACs for the technicians to perform.

## Utilization Module

By keeping a database of switch port usage - date, time, and user - the *PANVIEW* System tracks network capacity by one click of a button. By defining the inactive time period and clicking "start", the *PANVIEW* System generates a report showing all of the connected ports that are not utilized. The network administrator can then schedule work orders for the technicians bringing those "missing" ports back into the network mainstream. Meanwhile, if your system is out of capacity, *PANVIEW's* report just made justifying your capital expenditure request that much easier.

Discover



# Features and Benefits

# Features and Benefits

## *Integration Capability*

The *PANVIEW™* Solution fully integrates with both HP OpenView and CA Unicenter TNG, giving the user complete network management capabilities from one screen. Simply clicking on a computer icon on either management program brings up The *PANVIEW* System's link preview, showing in real-time the end-to-end connection for that user. Managing the entire network has never been easier.

## *PANMAP™ Technology*

DISCOVER

This unique technology eliminates the need to manually enter the location of all the network items in the database during initial setup. A two step process automatically maps the network and identifies the equipment connected at each outlet.

## *Web Interface*

With the web interface, the *PANVIEW* System permits monitoring of your entire system. Then, changes can be made through a connection on the network.

## *Reports*

The *PANVIEW* System has a built in library of over 65 different reports, all readily accessible. These reports can be used for cost justifications as well and network analyzes.



The screenshot displays a web interface with a title bar 'LINK Report' and a sub-header 'Link - Equipment to User'. Below the header is a table with columns: ID#, Item, Port ID, Port Name, Location, ID#, Port Name, Last Year, and Department. The table lists several entries for 'Modem' and 'Telnet' items, showing their respective ports, locations, and departments.

ID#	Item	Port ID	Port Name	Location	ID#	Port Name	Last Year	Department
Modem 01	00 Item-T Modem	Port 03	Port 03	Web - 010	008-00			Engineering
Modem 01	00 Item-T Modem	Port 04	Port 04	Web - 010	008-10			Tele Support
Modem 02	00Item-T Modem	Port 03	Port 03	Web - 010	008-11			Tele Support
Modem 02	00Item-T Modem	Port 03	Port 03	Web - 010	008-15			Tele Support
PRC - 01	Telnet Backlog	T.Port 001	T.Port 001		008-00			Engineering
PRC - 01	Telnet Backlog	T.Port 006	T.Port 006		008-10			Tele Support
PRC - 01	Telnet Backlog	T.Port 002	T.Port 002		008-11			Tele Support
PRC - 01	Telnet Backlog	T.Port 002	T.Port 002		008-15			Tele Support
Tel 01	Telnet				008-01			Engineering