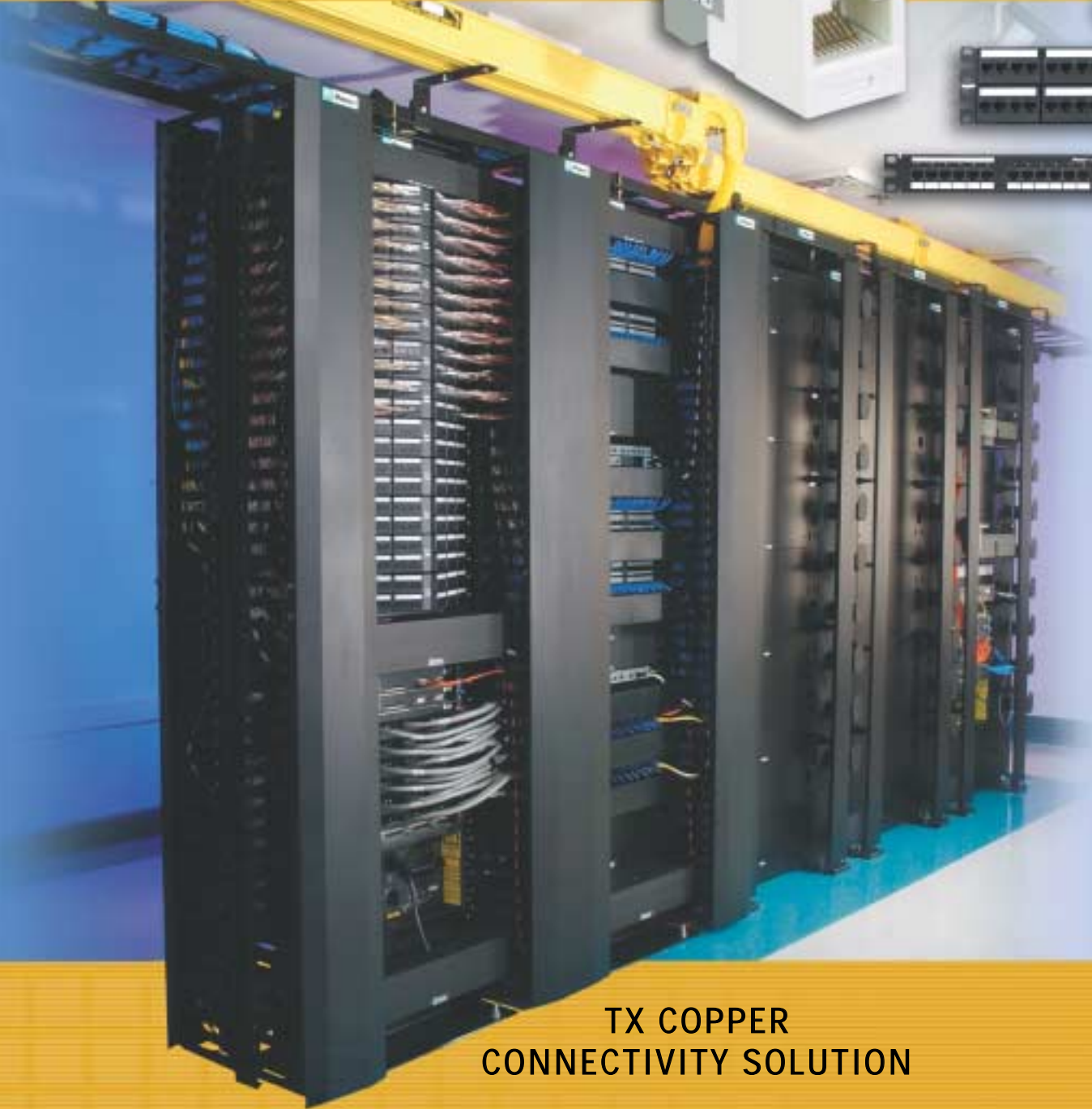


*Breakthrough  
Technology*



**TX COPPER  
CONNECTIVITY SOLUTION**

## ***Performance Beyond Products***

***PANDUIT® is the global leader in network connectivity, delivering end-to-end system solutions in support of your most demanding network requirements.***

***We have built our solution on a foundation of quality, consistency and installed performance and excelled with breakthrough technology in support of emerging network applications.***

***While others have changed their focus, PANDUIT continues to shape the future with innovation in technology and service.***

## *The Foundation of Your Network*

You depend on your network for survival. It drives the mission critical voice, data, video and security applications you rely on to service your customers and improve your business. These applications are forever growing and changing.

You have the responsibility of supporting this change. To do so you must establish a future ready network infrastructure, with built in performance headroom in support of emerging network technologies, including 10 Gigabit Ethernet and beyond. Also required is the flexibility to support legacy technologies, and your diverse organization wide requirements.

Each element of your network is critical to achieving these objectives, but the cabling infrastructure, which has the longest useable life and accounts for up to 50% of network problems, is the foundation.

Cabling standards have helped establish a framework for performance in support of higher transmission speeds, from Category 5e 100 MHz to Category 6 250 MHz. However, more is required to ensure the reliability and performance of your network over the long run.

*PANDUIT® focuses on five critical factors to deliver a sustainable cabling infrastructure:*

*Breakthrough  
Technology*

*World-Class  
Quality*

*Framework for  
Convergence*

*World-Class  
Service*

*End to End 25 Year  
System Guarantee*

# Breakthrough Technology

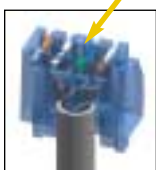
## High Frequency Network Analyzer

delivers accurate results out to 600 MHz

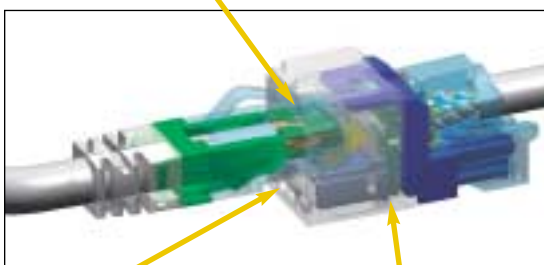


## Breakthrough Technology

### GIGA-TX™ Technology

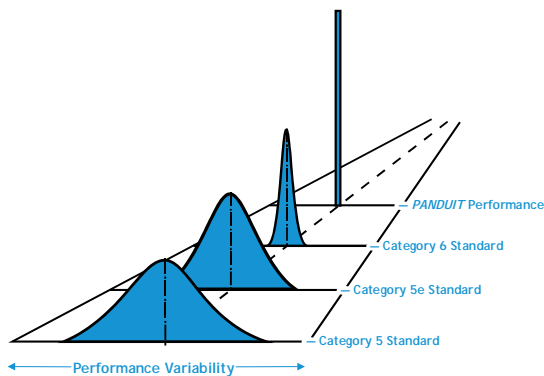


### Integral Pair Manager



Patented Front-end Contact Configuration

Crosstalk Compensation Technology



The *PANDUIT*® tradition of breakthrough technology continues with the introduction of the *MINI-COM*® *TX-6*™ *PLUS* Jack Module, *DP6 PLUS* Patch Panels *TX-6 PLUS* Category 6 Patch Cords and modular plugs. These new products are a direct result of our continued focus on the needs of the customer, sustained high level of investment in both research and development, technically driven product engineering teams and continued investment in state of the art product development tools.

The *PANDUIT* copper system research lab contains the latest network diagnostic and development tools and our R&D Group utilizes rapid modeling equipment to turn concepts into true to life prototypes in a matter of hours.

The patented *TX-6 PLUS* Jack Module combines *GIGA-TX*™ Technology, helping to ensure pair twists are maintained to the point of connection upon installation, with Crosstalk Compensation Technology within the multi-layer printed circuit board and Patented Front-end Contact Configuration to minimize noise within the connector.

The patented *TX-6 PLUS* Modular Plug employs an Integral Pair Manager locking conductors into place at the center of the plug range.

Together the module and plug deliver superior mated connector performance with consistent results.

### ◀ Mated Pair Performance

*PANDUIT Corp. TX-6 PLUS performance is centered in the de-embedded range, minimizing variability to ensure optimal mated Category 6 performance at all times.*



# Performance

Next is *PANDUIT*® Modular Patch Panels and Punchdown Systems. Multiple solutions are available to meet your density and performance requirements and each solution is designed up front to be compatible with *PANDUIT* cable management systems and accommodate quick moves, adds and changes.

The latest innovation in *PANDUIT* Modular Patch Panels is the one rack space (24 port) or two rack space (48 port) angled high density versions. These patch panels are designed to work with the new *PANDUIT PATCHRUNNER*™ Cable Management System and are ideal for high density rack mount applications.

Excellent for zone cabling and wall mount applications is the *GIGA-PUNCH*™ Punchdown System. This System delivers Category 6 *PLUS* performance and 44% higher density than typical 110 punchdown systems



▲ **DP6™ PLUS Patch Panels** feature *GIGA-PUNCH*™ Punchdown termination on back of panel which delivers exceptional Category 6 performance.

◀ **NEW**  
**PATCHRUNNER™ System**, designed for use with *PANDUIT* angled modular patch panels and Cisco 6500 Series Switches eliminates the need for horizontal cable management, conserving valuable rack space.



# World-Class Quality



## World-Class Quality

Quality is designed into each PANDUIT® product and production process.

**CISCO SYSTEMS**  
Verified

**Cisco VIP Mark**

PANDUIT Category 5e Cabling Solutions are the first in the world to receive the Cisco VIP Mark -

Verifying interoperability with Cisco Systems

Networking Solutions.

All Category 6 products are designed and manufactured in PANDUIT ISO 9001 and ISO 14001 facilities.



Category 5e and Category 6 Modules undergo more than 90 individual quality checks in production and every connector is 100% verified to meet critical electrical performance specifications. MINI-COM® TX-6™ PLUS Modules undergo Online NEXT verification of performance. Each module is given a serialized quality verification number in production upon certification of performance.

Every PANDUIT patch cord is 100% performance tested to ensure compliance to the latest TIA/EIA standards and individually identified with a unique performance verification number.

## Framework for Convergence

### PACT Unified Infrastructure



The PACT™ Unified Infrastructure Program brings together a community of technology partners who share a common vision - to provide integrated networking solutions based on a framework of open architecture to deliver current and emerging applications.



We have worked with customers to develop application driven product solution sets, such as Voice over IP, Ethernet to the home or office, and security. Industry standards help to ensure all building services and network applications work together. However, the unified approach goes one step further by testing the solutions for interoperability, functionality, and performance, providing a further guarantee that the entire solution will fully function at an optimum level.

## Framework for Convergence

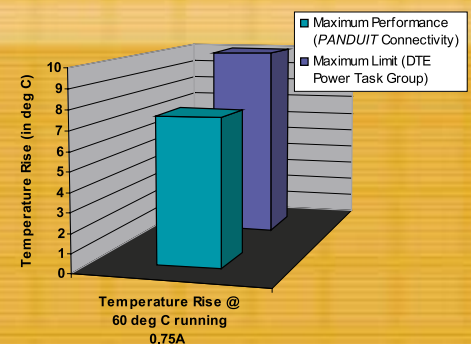
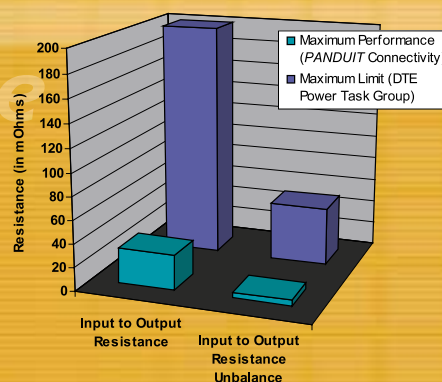
**PANDUIT Copper Connectivity**

exceeds TIA Parameters for Powered

Ethernet in support of a converged network

environment as specified by the TR-42.1

Technical Committee as of 9/30/2002.





# World-Class Service

## World-Class Service

At *PANDUIT*® we pride ourselves on our ability to respond quickly to customer needs and deliver consistent service levels the world over. Services extend through the design, procurement, installation and maintenance of your system.

The *PANDUIT* Certified Designer Program (PCD) offers a worldwide connection to a design professional that's right for you. Access to PCDs facilitates implementing your network with the assistance of a local design professional.

*PANDUIT* partners with the leading distributors around the globe to provide logistics support worldwide. With over 30 years of global logistics experience and a network of *PANDUIT* owned warehouses around the world, product supply and customer service is assured.

A global community of specially trained *PANDUIT* Certified Installers (PCIs) provides quality installation of *PANDUIT* products. PCIs receive ongoing training on products, standards and installation practices, ensuring the reliability and performance of an installed channel.

We provide technical support across the globe, from pre-installation to post installation, the advice on hand is second to none. We can assist future focused customers in the enterprise and service provider markets striving to expand past geographical business boundaries by ensuring consistent service and support levels.



Houston Independent School District



Cisco Systems



Chicago Mercantile Exchange Inc.



Novell

▲ "The Choice of Technology Leaders"

*PANDUIT* is the connectivity solution of choice at leading technology companies the world over, including Cisco Systems, Chicago Mercantile Exchange Inc., Houston ISD and Novell.

# End to End 25 Year System Guarantee

## End to End 25 Year System Guarantee

Beware of manufacturers that try to shift your focus away from tangible system benefits and toward marketing spin. At PANDUIT® we will continue to address the needs of our customers with a straightforward, value added system warranty program to ensure you receive the installed performance you require in support of your most demanding application requirements.

### Program Advantages

- One point-of-contact for all cable and component questions
- Warranty coverage to repair or replace defective components
- Freedom to choose from a variety of leading-edge copper and fiber cable solutions
- Compliance with global standards - ANSI/TIA/EIA/ISO/IEC
- Standards-compliant copper and fiber link testing
- Network Application Assurance

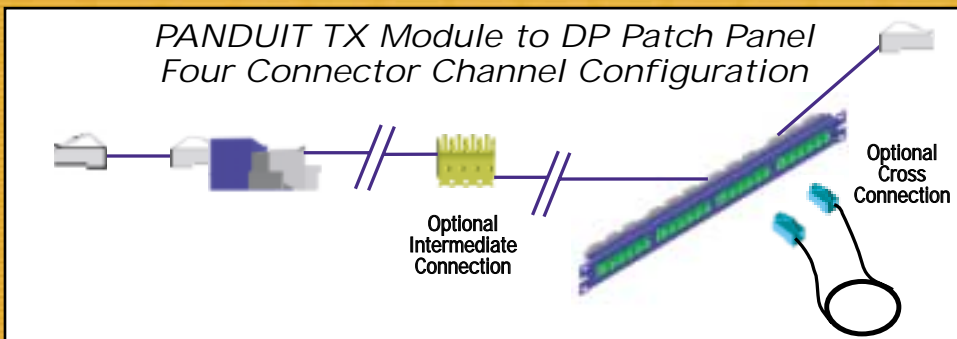
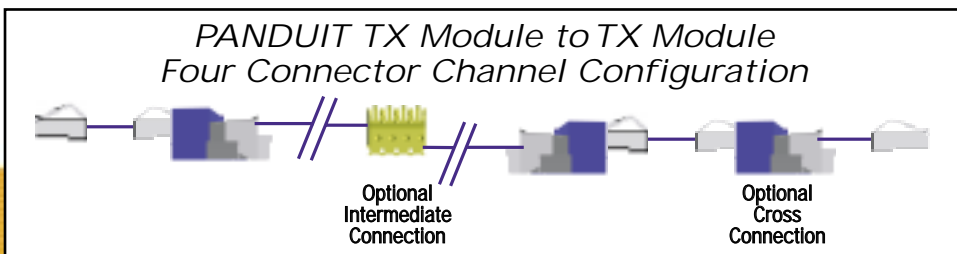
*Note:* System must be registered with PANDUIT to activate warranty. All terms and conditions of the PANDUIT CERTIFICATION PLUS System Warranty Program apply.

## TX-6™ PLUS Performance

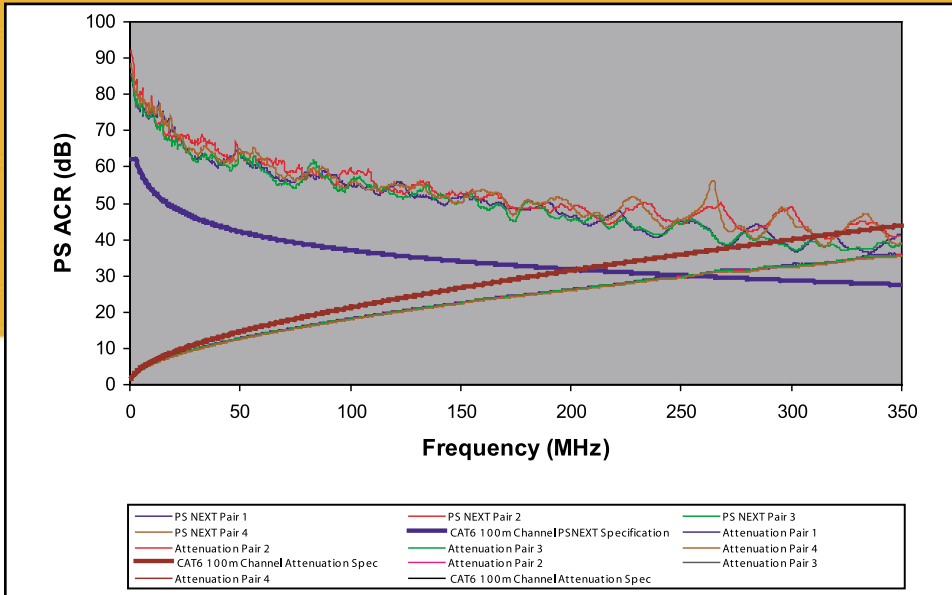
TX-6 PLUS System Worst Pair Margin Over Category 6 Standard (1 to 250 MHz)	
	Typical Worst Case
Insertion Loss	9%
PP NEXT	9 dB
PS NEXT	10 dB
ACR	13 dB
PS ACR	15 dB
PP ELFEXT	9 dB
PS ELFEXT	12 dB
Return Loss	7 dB

**Typical Worst Case:** Values based on actual worst case margin across entire frequency range recorded across the average of three channels in accordance with TIA/EIA-568-B.1-1.

Results based on four connector, 100 meter channels with TX-6 PLUS Jack Modules and Category 6 enhanced cable. Contact PANDUIT for cable brand specific test results.



PANDUIT™ TX-6™ PLUS Jack Module 100 Meter Channel  
Power Sum ACR Closet End

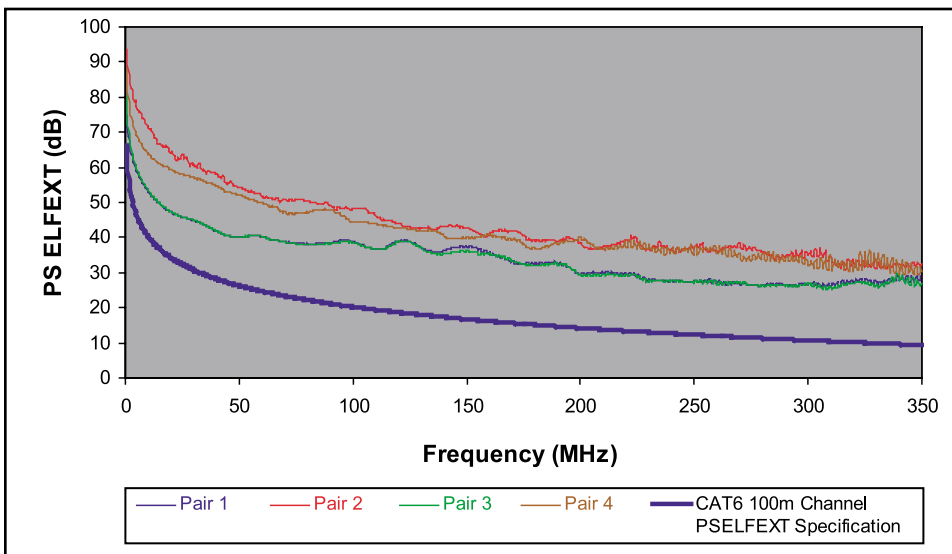


PSACR

Power Sum ACR is the difference between the attenuation and the observed PSNEXT at a particular frequency. Simply stated, it is the signal-to-noise ratio of the cabling system. PSNEXT is the ratio of the signal coupled onto a fourth pair at the near end when the three other pairs are powered, relative to the original signal strength of the powered signal. In full-duplex environments, PSNEXT and attenuation are important parameters because all pairs transmit and receive at the same time and excessive NEXT and attenuation can hurt your network performance.

This is important because as your PSACR is reduced, your receiver can have trouble distinguishing the signal from the noise. PSACR is a critical factor in judging the transmission quality of an installed channel.

PANDUIT TX-6 PLUS Jack Module 100 Meter Channel  
Power Sum ELFEXT Closet End

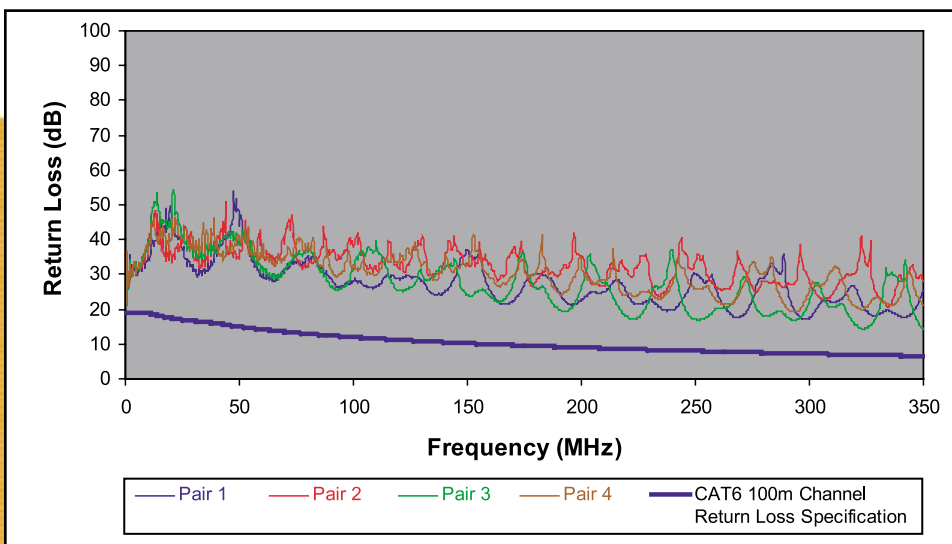


PSELFEXT

PSELFEXT is the ratio of the amount of signal coupled onto a fourth pair at the receiving end when the three other pairs are powered, relative to the attenuated signal strength at the receiving end of the powered signal. Basically, PSELFEXT is a measure of the total crosstalk that is seen at the receiving end of the cabling system relative to the received transmitted signal.

This is important because as your PSELFEXT is reduced, your receiver can have trouble distinguishing the signal from the noise generated at the far end. PSELFEXT is a critical factor in judging the transmission quality of an installed channel.

PANDUIT TX-6 PLUS Jack Module 100 Meter Channel  
Return Loss Closet End



Return Loss

Return Loss is the ratio of the amount of signal that is reflected back at the transmitter relative to the original signal sent.

In full duplex transmission environments, significant Return Loss can cause errors in your network. Since a full duplex network can transmit and receive simultaneously, a large reflected signal can be perceived as a received signal even though there is no signal to receive.

## MINI-CoM® TX-6™ PLUS Jack Module

- Exceeds TIA/EIA-568-B.2-1 Category 6 standard
- ETL tested and approved for Category 6 component performance
- Forward motion termination speeds installation and places no localized stress on critical internal components for maximum reliability
- No punchdown tool required
- Utilizes GIGA-TX™ Technology to optimize performance by reducing conductor untwist to less than 1/8"
- Terminates 4-pair 22 and 24 AWG 100 ohm solid unshielded twisted pair cable
- Termination cap provides excellent strain relief, helps control cable bend radius and securely retains wires
- Termination cap is color coded for T568A and T568B wiring schemes
- Accepts 2, 3 or 4 pair modular plugs without damage
- Electric Ivory module base designates Category 6 performance with GIGA-TX Technology
- Can be clearly identified with optional labels and icons
- Compatible with MINI-CoM Modular Patch Panels, Faceplates and Surface Mount Boxes
- All PANDUIT® MINI-CoM Modules including small form factor duplex fiber optic connectors, are interchangeable in one modular space of outlets, boxes, patch panels, facilitating future changes and upgrades



CJ688TP

PART NUMBER	DESCRIPTION	No. of Module Spaces	Color	Std. Pkg. Qty.	Std. Ctn. Qty.
CJ688TPIW	8 position, 8 wire universal module. Termination cap is color coded for T568A and T568B wiring schemes.	1	Off White	1	50

For module colors other than Off White, replace IW suffix with EI (Electric Ivory), WH (White), IG (International Gray), BL (Black), OR (Orange), RD (Red), BU (Blue), GR (Green), YL (Yellow) or VL (Violet).

## MINI-CoM ULTIMATE ID™ TX-6 PLUS Modular Patch Panel Kits

- Designed to efficiently support TIA/EIA-606-A standard labeling requirements
- Features MINI-CoM TX-6 PLUS Jack Modules with GIGA-TX Technology
- Exceeds TIA/EIA-568-B.2-1 Category 6 standard
- Available in 24 or 48 port configuration with color coded termination cap for T568A and T568B wiring schemes
- Angled patch panel version allows cable to flow to each side of the rack and eliminates the need for horizontal cable managers by enabling patch cords to be routed to the sides into vertical cable managers
- Can be clearly identified with the PANACEA™ LS7 Hand-held Thermal Transfer Printer
- Computer printable label sheets for desktop printers available
- Labels sold separately
- Replacement label covers available
- Mounts to standard 19" racks



UICMPPKTP24BL

PART NUMBER	DESCRIPTION	No. of Rack Spaces^	Std. Pkg. Qty.	Std. Ctn. Qty.
UICMPPKTP24BL	24 port patch panel with 6 UICPPL4BL MINI-CoM ULTIMATE ID faceplates and 24 black MINI-CoM TX-6 PLUS Jack Modules.	1	1	10
UICMPPKTP48BL	48 port patch panel with 12 UICPPL4BL MINI-CoM ULTIMATE ID faceplates and 48 black MINI-CoM TX-6 PLUS Jack Modules.	2	1	10
UICMPPKATP24BL	24 port angled patch panel with 6 UICPPL4BL MINI-CoM ULTIMATE ID faceplates and 24 black MINI-CoM TX-6 PLUS Jack Modules.	1	1	10
UICMPPKATP48BL	48 port angled patch panel with 12 UICPPL4BL MINI-CoM ULTIMATE ID faceplates and 48 black MINI-CoM TX-6 PLUS Jack Modules.	2	1	10

^One rack space = 1.75" (44.45mm).  
Mounting screws included.

Patch panels shown with labels installed, labels sold separately.

For additional varieties of patch panels, including ULTIMATE ID Patch Panels, refer to our ULTIMATE ID Network Labeling System Catalog SA-IDCB01.

## TX Style Termination Tool



CGJT

PART NUMBER	DESCRIPTION	Std. Pkg. Qty.	Std. Ctn. Qty.
CGJT	Terminates GIGA-TX Style Modules.	1	10

Order number of pieces required, in multiples of Standard Package Quantity.

## DP6™ PLUS Patch Panels

- Exceeds TIA/EIA-568-B.2-1 Category 6 standard
- ETL tested and approved for Category 6 component performance
- Printed circuit board with protective cover
- Removable 6-port design with integral cable tie mounts
- High performance *GIGA-PUNCH™* style termination on back
- Mounts to standard TIA/EIA 19" or 23" racks with optional extender bracket

- Areas available for port and panel identification
- Can be clearly identified with optional labels and icons
- Wiring scheme clearly identified on universal label
- Terminated with GPST punchdown tool
- Terminates most 22-26 AWG solid or stranded wire with a 0.050" (1.27mm) max o.d., either PVS or Plenum rated



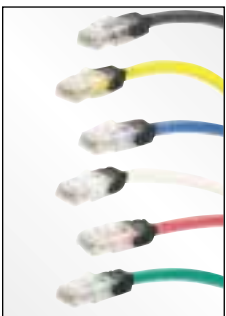
PART NUMBER	DESCRIPTION	No. of Rack Spaces <sup>^</sup>	Std. Pkg. Qty.	Std. Ctn. Qty.
DP12688TP	12 port punchdown patch panel with Universal T568A and T568B wiring scheme. Mounts to 89D bracket for wall mount applications.	—	1	10
DP24688TP	24 port punchdown patch panel with Universal T568A and T568B wiring scheme.	1	1	10
DP48688TP	48 port punchdown patch panel with Universal T568A and T568B wiring scheme.	2	1	10
DP96688TP	96 port punchdown patch panel with Universal T568A and T568B wiring scheme.	4	1	10

<sup>^</sup>One rack space = 1.75" (44.45mm).

## TX-6™ PLUS Category 6 Patch Cords

- Exceeds TIA/EIA-568-B.2-1 Category 6 standard
- ETL tested and approved for Category 6 component performance
- Centered de-embedded plug performs in center of TIA/EIA component range, ensuring interoperability and excellent performance
- Exceeds FCC part 68 Subpart F requirements
- Constructed of next generation 24 AWG UTP stranded cable and TX-6 PLUS Modular Plugs for superior performance, plug contacted plated with 50 microinches of gold
- Patented tangle free latch prevents snags and provides easy release, saving time on frequent moves, adds and changes

- Slender strain relief boot and plug provides easy access in high density applications
- Integral pair manager optimizes performance and consistency by reducing untwist at plug
- Labels on patch cords provide identification of performance level, length and quality control number
- Each patch cord is 100% performance tested
- Offered in a variety of lengths and colors to meet individual length and color coding requirements



PART NUMBER	DESCRIPTION	Cable Color	Length (ft)	Std. Pkg. Qty.	Std. Ctn. Qty.
UTPSP3	UTP stranded patch cord with TX-6 PLUS Category 6 Modular Plug on each end for use in a Category 6 channel.	Off White	3	1	10
UTPSP5	UTP stranded patch cord with TX-6 PLUS Category 6 Modular Plug on each end for use in a Category 6 channel.	Off White	5	1	10
UTPSP7	UTP stranded patch cord with TX-6 PLUS Category 6 Modular Plug on each end for use in a Category 6 channel.	Off White	7	1	10
UTPSP10	UTP stranded patch cord with TX-6 PLUS Category 6 Modular Plug on each end for use in a Category 6 channel.	Off White	10	1	10
UTPSP14	UTP stranded patch cord with TX-6 PLUS Category 6 Modular Plug on each end for use in a Category 6 channel.	Off White	14	1	10
UTPSP20	UTP stranded patch cord with TX-6 PLUS Category 6 Modular Plug on each end for use in a Category 6 channel.	Off White	20	1	10

For standard cable colors other than Off White, add suffix BL (Black), BU (Blue), GR (Green), RD (Red) or YL (Yellow) to end of part number. For other cable colors VL (Violet) and OR (Orange), shipping lead time is 20 working days from receipt of order and minimum order quantity is 10 (1 carton each) for these colors. For non-standard lengths 3 to 20 feet (increments of 1 foot) change the length designation in the part number to the desired length. Shipping lead time is 20 working days after receipt of order and minimum order quantity is 10 (1 carton each) for these lengths.

Order number of pieces required, in multiples of Standard Package Quantity.

## GIGA-PUNCH™ Category 6 High Density Termination Kits

- Exceeds TIA/EIA-568-B.2-1 Category 6 standard
- ETL tested and approved for Category 6 component performance
- Increases wiring capacity by 44% over standard 110 systems
- Accommodates round and crescent cable
- Uses industry standard 110 contacts and assembly methods
- Label/label holders included



GPKBW144



GPKBW432

PART NUMBER	DESCRIPTION	Std. Pkg. Qty.	Std. Ctn. Qty.
GPKBW144	144-pair high density field termination kit with legs. Kit includes base, 4-pair connecting blocks, label holders and labels.	1	10
GPKBW432	432-pair high density field termination kit with legs. Kit includes base, 4-pair connecting blocks, label holders and labels.	1	10

## GIGA-PUNCH Category 6 Standard Density Termination Kits



GPKBW24



GPKBW72

PART NUMBER	DESCRIPTION	Std. Pkg. Qty.	Std. Ctn. Qty.
GPKBW24	24 port base field termination kit (96-pair) with legs. Kit includes base, 4-pair connecting blocks, label holders and labels.	1	10
GPKBW72	72 port base field termination kit (288-pair) with legs. Kit includes base, 4-pair connecting blocks, label holders and labels.	1	10

## TX-6™ PLUS Modular Plug



SP688

PART NUMBER	DESCRIPTION	Std. Pkg. Qty.	Std. Ctn. Qty.
SP688-L	8 position, 8 wire modular plug featuring patented tangle free latch. Terminates 24 gauge stranded or solid conductor with max. conductor insulation diameter of 1.02mm (0.040"). MPT5-8 tool required for termination.	50	250
MPT5-8	Termination tool	1	10

Order number of pieces required, in multiples of Standard Package Quantity.

## MINI-COM® TX-5e™ Jack Module

- Exceeds TIA/EIA-568-B Category 5e standard
- Forward motion termination speeds installation and places no localized stress on critical internal components for maximum reliability
- No punchdown tool required
- Utilizes GIGA-TX™ Technology to optimize performance by reducing conductor untwist to less than 1/8"
- Terminates 4-pair 22 and 24 AWG 100 ohm solid unshielded twisted pair cable
- Termination cap provides excellent strain relief, helps control cable bend radius and securely retains wires
- Termination cap is color coded for T568A and T568B wiring schemes
- Accepts 2, 3 or 4 pair modular plugs without damage
- Red module base designates Category 5e performance with GIGA-TX Technology
- Can be clearly identified with optional labels and icons
- Compatible with MINI-COM Modular Patch Panels, Faceplates and Surface Mount Boxes
- All PANDUIT® MINI-COM Modules including small form factor duplex fiber optic connectors, are interchangeable in one modular space of outlets, boxes, patch panels, facilitating future changes and upgrades



CJ5E88T

PART NUMBER	DESCRIPTION	No. of Module Spaces	Color	Std. Pkg. Qty.	Std. Ctn. Qty.
CJ5E88TIW	8 position, 8 wire universal module. Termination cap is color coded for T568A and T568B wiring schemes.	1	Off White	1	50

For module colors other than Off White, replace IW suffix with EI (Electric Ivory), WH (White), IG (International Gray), BL (Black), OR (Orange), RD (Red), BU (Blue), GR (Green), YL (Yellow) or VL (Violet).

## MINI-COM ULTIMATE ID™ TX-5e Modular Patch Panel Kits

- Designed to efficiently support TIA/EIA-606-A standard labeling requirements
- Features MINI-COM TX-5e Jack Modules with GIGA-TX Technology
- Exceeds TIA/EIA-568-B Category 5e standard
- Available in 24 or 48 port configuration with color coded termination cap for T568A and T568B wiring schemes
- Angled patch panel version allows cable to flow to each side of the rack and eliminates the need for horizontal cable managers by enabling patch cords to be routed to the sides into vertical cable managers
- Can be clearly identified with the PANACEA™ LS7 Hand-Held Thermal Transfer Printer
- Computer printable label sheets for desktop printers available
- Labels sold separately
- Replacement label covers available
- Mounts to standard 19" racks



UICMPPKT5E24BL

PART NUMBER	DESCRIPTION	No. of Rack Spaces^	Std. Pkg. Qty.	Std. Ctn. Qty.
UICMPPKT5E24BL	24 port patch panel with 6 UICPPL4BL MINI-COM ULTIMATE ID faceplates and 24 black MINI-COM TX-5e Jack Modules.	1	1	10
UICMPPKT5E48BL	48 port patch panel with 12 UICPPL4BL MINI-COM ULTIMATE ID faceplates and 48 black MINI-COM TX-5e Jack Modules.	2	1	10
UICMPPKAT5E24BL	24 port angled patch panel with 6 UICPPL4BL MINI-COM ULTIMATE ID faceplates and 24 black MINI-COM TX-5e Jack Modules.	1	1	10
UICMPPKAT5E48BL	48 port angled patch panel with 12 UICPPL4BL MINI-COM ULTIMATE ID faceplates and 48 black MINI-COM TX-5e Jack Modules.	2	1	10

^One rack space = 1.75" (44.45mm).

Mounting screws included.

Patch panels shown with labels installed, labels sold separately.

For additional varieties of patch panels, including ULTIMATE ID Patch Panels, refer to our ULTIMATE ID Network Labeling System Catalog SA-IDCB01.

Order number of pieces required, in multiples of Standard Package Quantity.

## DP5e™ Patch Panels

- Exceeds TIA/EIA-568-B Category 5e standard
- Printed circuit board with protective cover
- Removable 6-port design with integral cable tie mounts
- 110 Punchdown style termination on back
- Mounts to standard TIA/EIA 19" or 23" racks with optional extender bracket
- Areas available for port and panel identification
- Can be clearly identified with optional labels and icons
- Wiring scheme clearly identified on universal label
- Terminated with PDT110 punchdown tool
- Terminates 4-pair 24 and 22 AWG 100 ohm solid unshielded twisted pair cable



DP125E88110U



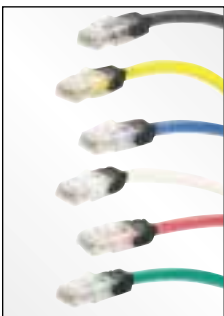
DP245E88110U

PART NUMBER	DESCRIPTION	No. of Rack Spaces <sup>^</sup>	Std. Pkg. Qty.	Std. Ctn. Qty.
DP125E88110U	12 port punchdown patch panel with Universal T568A and T568B wiring scheme. Mounts to 89D bracket for wall mount applications.	—	1	10
DP245E88110U	24 port punchdown patch panel with Universal T568A and T568B wiring scheme.	1	1	10
DP485E88110U	48 port punchdown patch panel with Universal T568A and T568B wiring scheme.	2	1	10
DP965E88110U	96 port punchdown patch panel with Universal T568A and T568B wiring scheme.	4	1	10

<sup>^</sup>One rack space = 1.75" (44.45mm).

## Category 5e Patch Cords

- Exceeds TIA/EIA-568-B.2-1 Category 5e standard
- Exceeds FCC part 68 Subpart F requirements
- Constructed of next generation 24 AWG UTP stranded cable and Category 5e *PAN-PLUG™* Modular Plugs for superior performance, plug contacted plated with 50 microinches of gold
- Patented tangle free latch prevents snags and provides easy release, saving time on frequent moves, adds and changes
- Labels on patch cords provide identification of performance level, length and quality control number
- Each patch cord is 100% performance tested
- Offered in a variety of lengths and colors to meet individual length and color coding requirements



UTPSP

PART NUMBER	DESCRIPTION	Cable Color	Length (ft)	Std. Pkg. Qty.	Std. Ctn. Qty.
UTPCH3	UTP stranded patch cord with Category 5e <i>PAN-PLUG</i> Modular Plug on each end for use in a Category 5e channel.	Off White	3	1	10
UTPCH5	UTP stranded patch cord with Category 5e <i>PAN-PLUG</i> Modular Plug on each end for use in a Category 5e channel.	Off White	5	1	10
UTPCH7	UTP stranded patch cord with Category 5e <i>PAN-PLUG</i> Modular Plug on each end for use in a Category 5e channel.	Off White	7	1	10
UTPCH10	UTP stranded patch cord with Category 5e <i>PAN-PLUG</i> Modular Plug on each end for use in a Category 5e channel.	Off White	10	1	10
UTPCH14	UTP stranded patch cord with Category 5e <i>PAN-PLUG</i> Modular Plug on each end for use in a Category 5e channel.	Off White	14	1	10
UTPCH20	UTP stranded patch cord with Category 5e <i>PAN-PLUG</i> Modular Plug on each end for use in a Category 5e channel.	Off White	20	1	10

For standard cable colors other than Off White, add suffix BL (Black), BU (Blue), GR (Green), RD (Red) or YL (Yellow) to end of part number. For other cable colors VL (Violet) and OR (Orange), shipping lead time is 20 working days from receipt of order and minimum order quantity is 10 (1 carton each) for these colors. For non-standard lengths up to 20 feet (increments of 1 foot) change the length designation in the part number to the desired length. Shipping lead time is 20 working days after receipt of order and minimum order quantity is 10 (1 carton each) for these lengths.

Order number of pieces required, in multiples of Standard Package Quantity.

## PAN-PUNCH™ Category 5e Field Terminated Kits

- Exceeds TIA/EIA-568-B Category 5e standard
- 100 and 300 pair base kits available with 3, 4 or 5 pair connecting blocks
- Label/label holders included



P110KB1004



P110KB3004

PART NUMBER	DESCRIPTION	Color	Std. Pkg. Qty.	Std. Ctn. Qty.
P110KB1004IG	100 pair field termination kit with legs. Kit includes connecting base, five 4-pair and one 5-pair connecting block per 25-pair wiring strip, label holder and labels.	Elec. Ivory & Int. Gray	1 kit	10 kits
P110KB3004IG	300 pair field termination kit with legs. Kit includes connecting base, five 4-pair and one 5-pair connecting block per 25-pair wiring strip, label holder and labels.	Elec. Ivory & Int. Gray	1 kit	10 kits

For 3 and 5 pair connecting blocks, replace 4 in part number with 3 or 5.

Order number of pieces required, in multiples of Standard Package Quantity.

### Notes...



**PANDUIT Corp.**  
17301 Ridgeland Avenue  
Tinley Park, Illinois 60477-3091, USA

Customer Service: 800.777.3300  
Fax: 708.532.1811  
Technical Support: 866.405.6654  
email: [ncginfo@panduit.com](mailto:ncginfo@panduit.com)

**PANDUIT Australia**  
30-36 Kitchen Road, Dandenong  
Victoria 3175, Australia

Phone: 61.3.9794.9020  
Fax: 61.3.9794.7101



**PANDUIT Europe Ltd**  
West World, Westgate  
London W5 1XP, United Kingdom

Phone: 44.208.601.7200  
Fax: 44.208.601.7209

**PANDUIT Asia Pacific Pte Ltd**  
60 Tuas Avenue 11, Singapore  
Republic of Singapore 639106

Phone: 65.6379.6700  
Fax: 65.6379.6759



**PANDUIT Mexico**  
Ave. Lazaro Cardenas 2785  
Col. Alamo Industrial, Tlaquepaque  
Jal 44490, Mexico

Phone: 52.3.666.2501  
Fax: 52.3.666.2510

**PANDUIT Canada**  
140 Amber Street, Markham  
Ontario, Canada L3R 3JB

Customer Service: 800.777.3300  
Fax: 708.532.1811  
Technical Support: 866.405.6654  
email: [ncginfo@panduit.com](mailto:ncginfo@panduit.com)



**PANDUIT Japan**  
31-5, Omori-Kita, 6-Chome Ota-Ku  
Tokyo, Japan 143-0016

Phone: 81.3.3767.7011  
Fax: 81.3.3767.7033

For a copy of *PANDUIT* product warranties, log onto [www.panduit.com/warranty](http://www.panduit.com/warranty) or contact your local authorized *PANDUIT* distributor.