

Residential Access Gateway



to enable the future

Residential Access Gateway - The Most Complete Offer

Introduction

Telsey's Access Gateways deliver **multiple IP-based broadband services** to homes and offices (SOHO) over high speed, **always-on** broadband connection. Our devices enable the delivery of bundled video, voice and data services to customers' homes and offices bringing notable benefits to both service providers and end users.

Service Providers rapidly deliver original services such as **fast Internet, VoIP, Video on Demand and video streaming** to end-users through our Access Gateways.

End users access ground-breaking services offered by their providers **through a modern device**, which interconnects all peripherals, computers and telephones **using a single broadband connection** throughout the home and the office.



Telsey's continuous efforts to align its solutions with the ultimate applicable technology ensures Service Providers to profit from state-of-the-art Access Gateways and to offer them to their valued customers. Our products are designed at **competitive price targets** which enable Service Providers to make profitable business while delivering innovative services at an affordable cost to end-users. Furthermore, our decennial know-how in the design and production of such devices translates into an **excellent reliability and superior service** to our customers. The latest version of our Access Gateways has been designed with a new slick look which easily fits in any domestic/business environment.

Telsey's complete and unique product family is comprised of gateways for both residential and SOHO/SME users.

**This brochure is related to Telsey Residential Access Gateways. Please, refer to SOHO Access Gateway brochure about Telsey product portfolio towards SOHO/SME users.



Residential Access Gateway - The most complete Offer

Access to all Broadband Networks

Our residential gateways access FTTH, ETTH and xDSL broadband networks therefore enabling Service Providers to deliver integrated services to end users. Telsey's Residential Access devices manage all protocols necessary for the delivery of multimedia services within domestic and business environments.

Telsey's Residential Access Gateways deliver telephony over IP, fast Internet, IP-Videostreaming, Video on Demand, remote home automation services and many other value-added services such as home-office security control, remote office and Video Surveillance.

Considering the different MAN architectures and services, our Residential Access Gateways are ready to interoperate with all network architectures and protocols such as H.323, SIP and MGCP.

- CPV** - Ethernet 10/100 BaseT uplink
- CPL** - Ethernet 10 BaseFL or 100 BaseFX/LX uplink
- CPVI/CPLI** - ISDN interface
- CPVA** - ADSL upLink

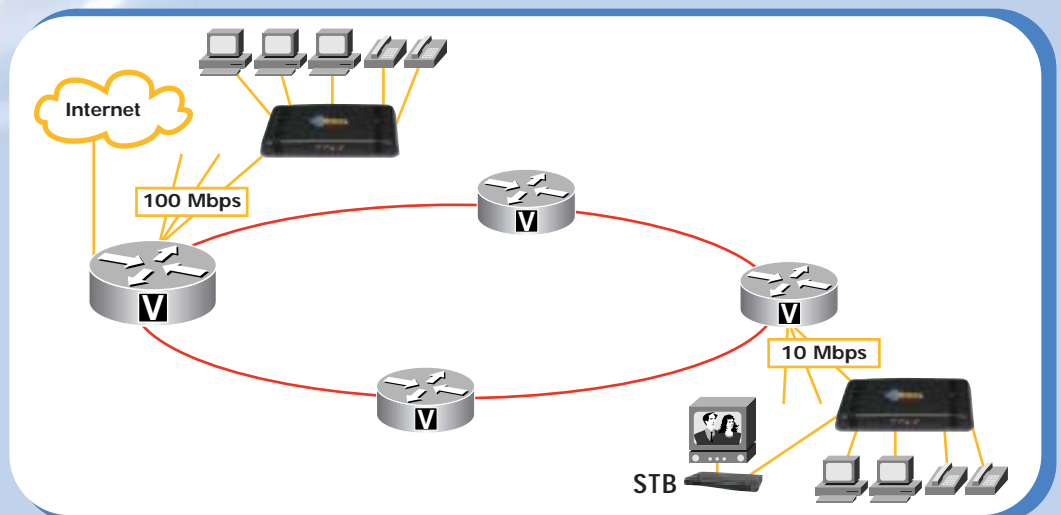


Access to ETTH and FTTH Networks

Gigabit Ethernet Ring - access to networks with local ethernet switches-CPV (electrical uplink) and CPL 10 BaseFL (10 Mbps optical uplink) are the right solution to give customers a 10 Mbps IP telephony connection, access to IP-based interactive and broadcasting video services (through Telsey's Set Top Boxes) and fast Internet.

Fast Ethernet Access Networks: CPV (electrical uplink) and CPL 100 BaseFX

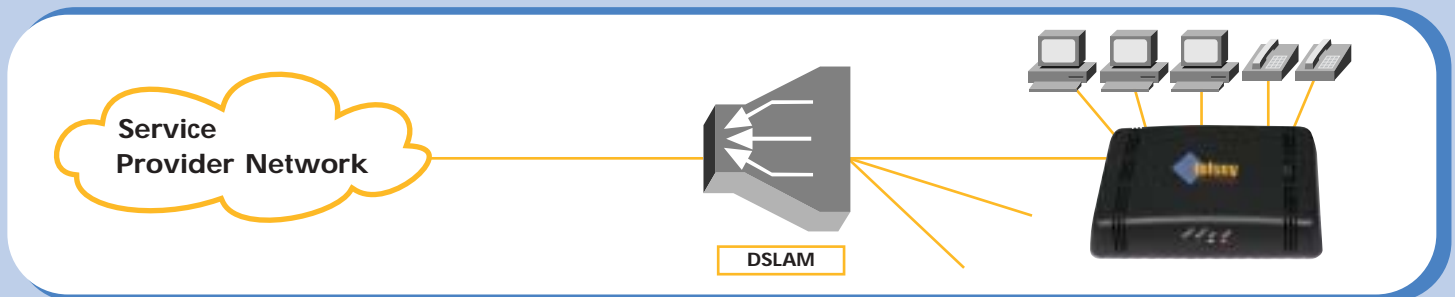
(100 Mbps optical uplink) deliver IP telephony, multi-streaming video (through Telsey's Set Top Boxes) and high speed data transfer services to customers.



Residential Access Gateway - The Most Complete Offer

xDSL Access Networks

The CPV-ADSL model includes full ADSL modem capabilities, two telephone interfaces, a switched LAN and routing capabilities. Following the evolution and the importance of Ethernet in the First Mile technologies, we are developing solutions to support other upcoming DSL technologies such as VDSL and ADSL+.



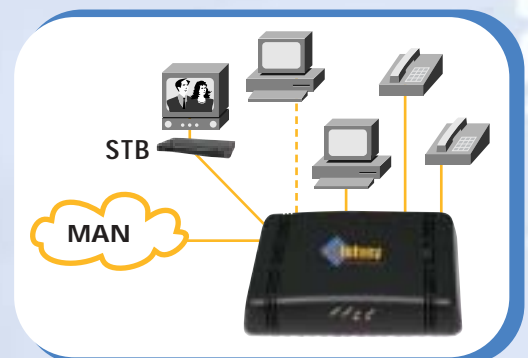
Physical Characteristics

Telsey's flexibility in the design and production of its products gives customers the unprecedented opportunity to select the physical characteristics of the access gateways that best match their network architecture. For instance, in order to ensure full connectivity, our gateways can be equipped with different types of uplink interfaces and connectors such as RJ-45, VF-45, MTRJ, SC for multi-mode and single-mode optical transmission and others upon request.

Our base model is equipped with the following voice and data interfaces:

Telephony

Two interfaces (**FXS or ISDN**) are used for Voice over IP. Standard telephones (analog or ISDN) can be directly connected to the gateways without running any additional wires. Excellent QoS is guaranteed through the support of port prioritization, 802.1p queuing, TOS marking, comfort noise generation and echo suppression. The number of calls directed to the IP-Network through Telsey Access Gateways can be extended by daisy chaining additional Telsey gateways.

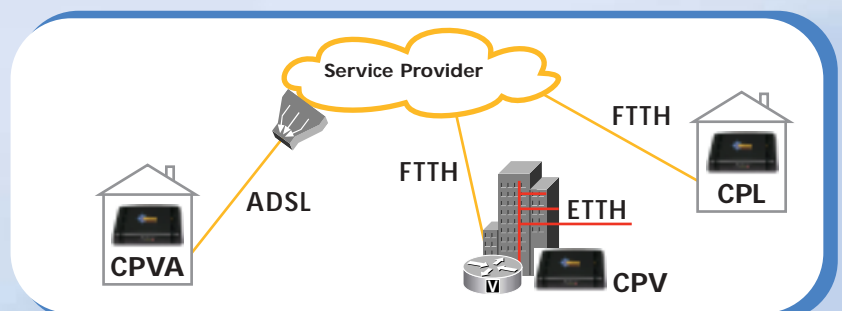


Domestic LAN

Three Ethernet ports are designed to offer end-users a small domestic switched LAN, thus enabling customers to avoid adding further devices to their homes. The support of advanced features like VLAN switching, IGMP snooping, and rate limiting allow service providers to manage efficiently the separation, control and optimization of the traffic flow inside their network.

Uplink (MAN)

Telsey offers a complete choice of uplink interfaces to help Network Operators and installers solve typical last mile problems. For example, in a FTTH environment access gateways with optical interface both 10 and 100 Mbps can be directly connected to the fiber without a Media Converter.



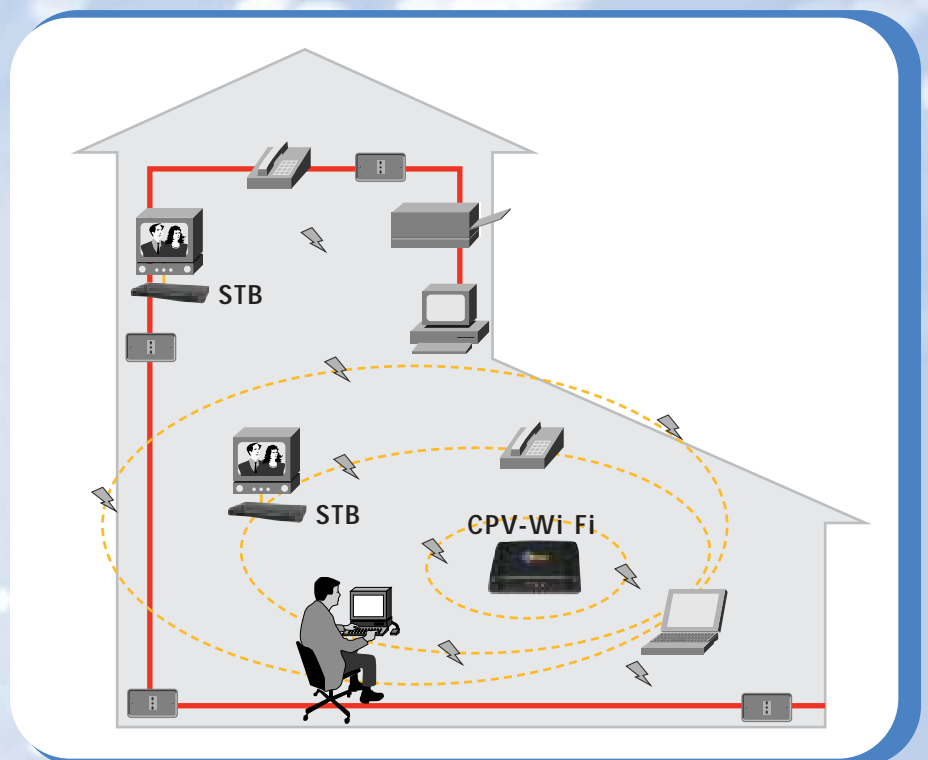
Residential Access Gateway - The Most Complete Offer

Flexible Home Networking and Secure Remote Working

While we continue to differentiate our products by offering flexible home networking LAN solutions, we also recognize the growing importance of home and remote working through IP Virtual Private Networks (VPNs). Our latest research is in the areas of wireless and powerline networking and in the support of security on IP VPNs.

Wireless Gateway: Through Wireless Gateways, providing IEEE G.802.11b access point, end users can access internet and all the related features at any point in their home and can benefit from having simultaneous connections all without intrusive cables.

Powerline Gateways: Telsey has developed an access gateway that supports Powerline technology. End users can access broadband networks directly through the power sockets in their home or office without having to struggle with additional cabling or equipment for building up their internal LAN.



Secure Remote Working

IP VPN is becoming the most successful technology for home office and remote working. Exchange of critical information between home workers and company sites needs a high level of security, in order to avoid interceptions, intrusions and Denial of Services. Service Providers must ensure secure data exchange starting from residential neighbourhoods. Therefore our ADSL Gateways development roadmap includes the IP VPN support, making working from home more secure and simplifying configuration, management and interoperability issues for Broadband Service Providers.

Residential Access Gateway - The Most Complete Offer

Key Features

Telsey offers a wide range of access gateways. Each model is designed to be easily customizable according to network's characteristics and architectures.

Our Access Gateways provide a complete set of features that make simpler their mass deployment through the support of DHCP, SNMP, TFTP and a local or remote Web interface.

Telsey designs and produces its Access Gateways taking into account the evolving needs of end-users and fast-evolving networks. Through its Research & Development Department, Telsey is constantly testing innovative technology and conducting advanced research.

Our Residential Access Gateways are easy to use, video interoperable, low cost, efficient and ready to be used securely in critical applications thanks to the battery back-up option. Telsey's Residential Access Gateways combined with Telsey's Set Top Boxes form flexible and powerful solutions for Voice, Data, Video and are ready for future services over IP broadband networks such as Video Telephony.

Our Unique Value

Our extensive experience in this industry, with more than **160.000 gateways installed in FTTH/ETTX-ADSL networks**, sets a reference for new customers approaching the broadband communications market. Our proven **reliability**, combined with our **dynamic and aggressive R&D team**, ascertain that Telsey's access gateways solutions represent the best, most up-to-date broadband service delivery vehicle.

Distinguished product flexibility, complete gamma of products, choice of protocols, codecs, applications, telephony supplementary services, forward-looking developments plans, promptness to incorporate additional services such as online home automation and new Ethernet in the First Mile winning technologies are other important advantages that position Telsey as the ideal partner to help customers maximize their business and preserve their investments.





Residential Access Gateway - The Most Complete Offer



- > **CPV** - Ethernet 10/100 BaseT uplink
- > **CPL** - Ethernet 10 BaseFL or 100 BaseFX uplink
- > **CPVI/CPLI** - ISDN interface
- > **CPVA** - ADSL uplink

