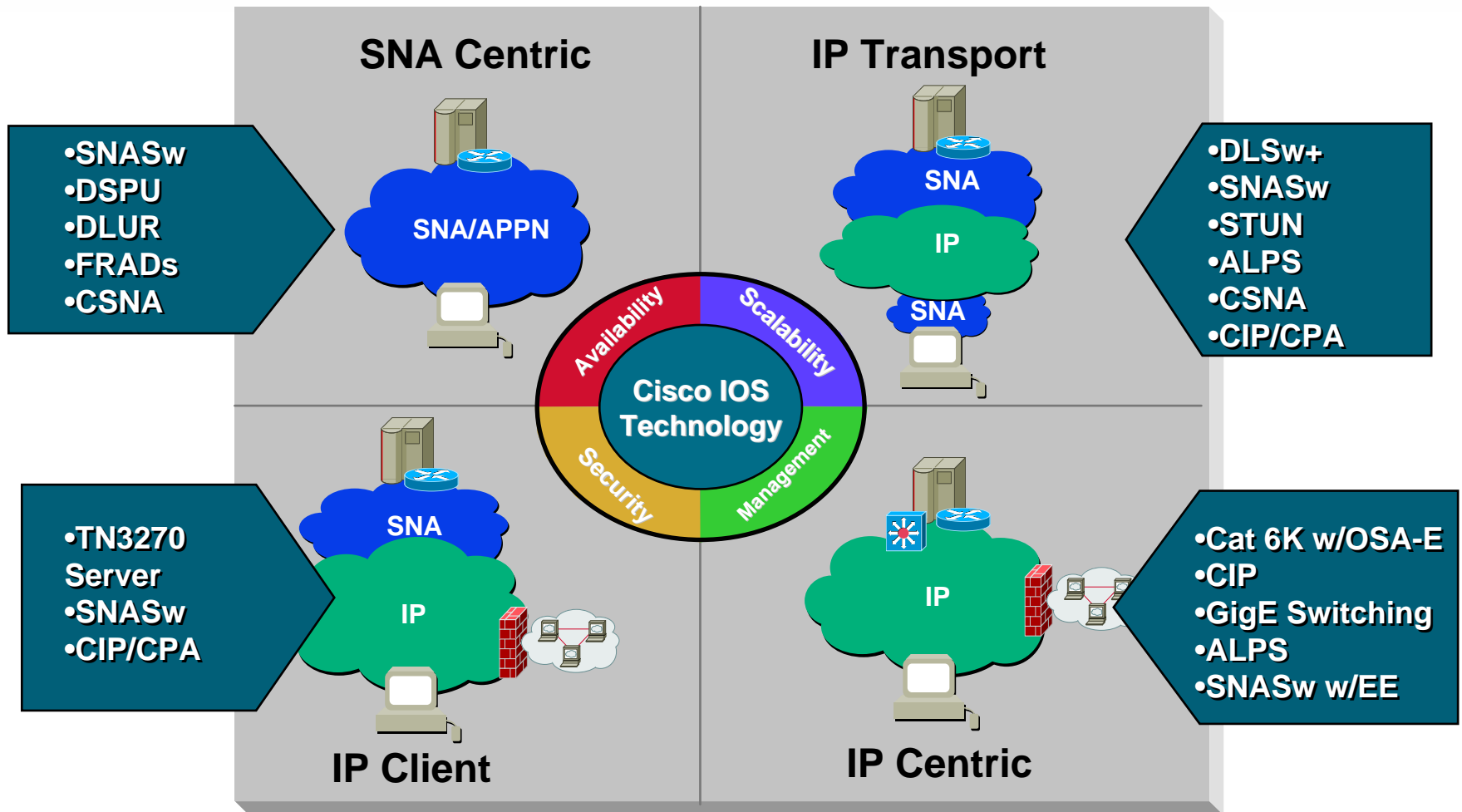




Bisync IP



Cisco SNA-to-IP Evolution



Empowering the Enterprise

- **New World networks will empower the enterprise if:**

Legacy equipment and protocols can be leveraged

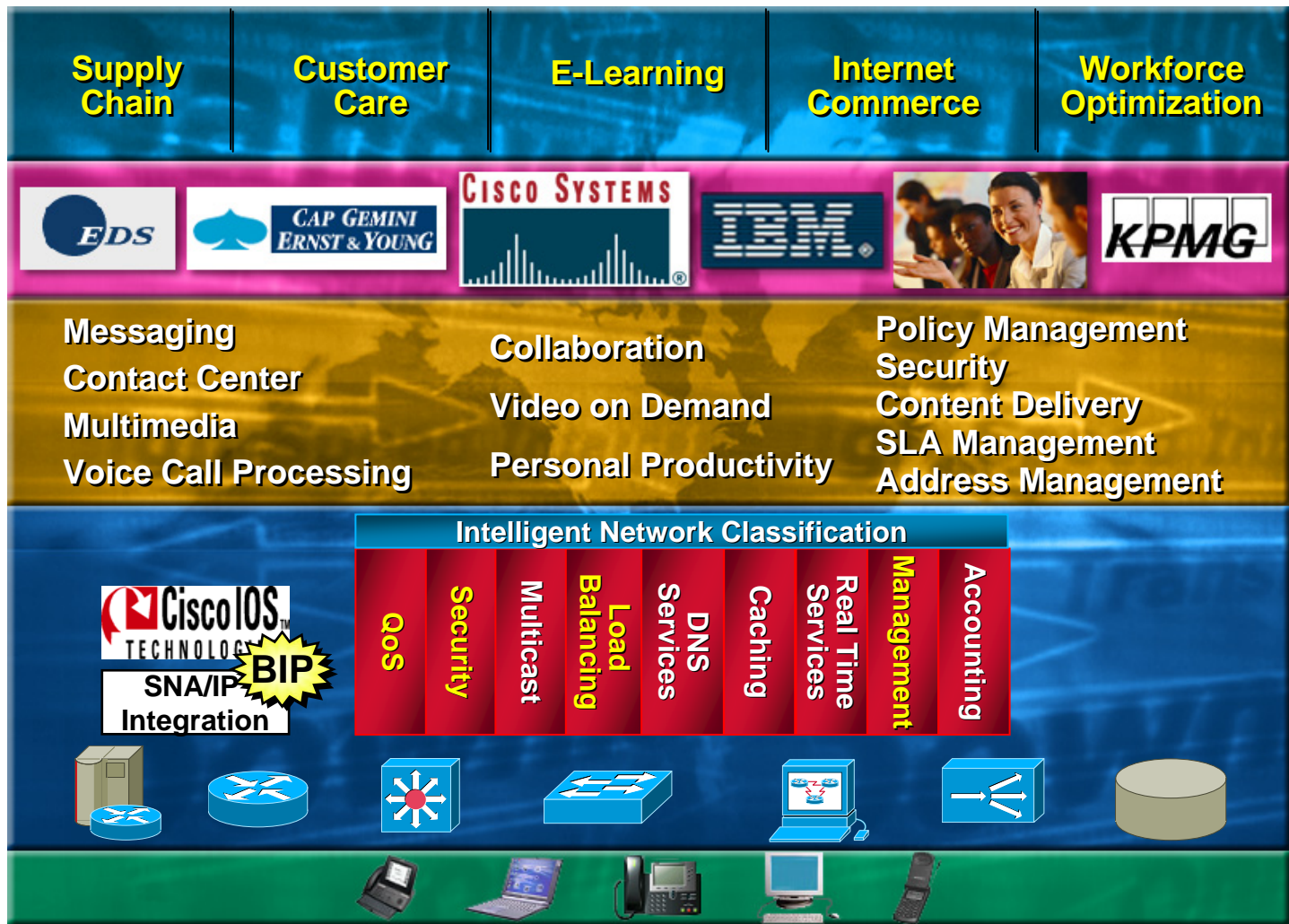
A smooth migration path to New World applications and technologies is provided

The New World network delivers outstanding network services

New World Network

- **IP-based applications on multiple server platforms**
- **Media-independent, high-speed campus switching**
- **Consolidated data/voice/video**
- **High-speed WAN connectivity**
- **“Thin” clients**

Cisco AVVID Architecture

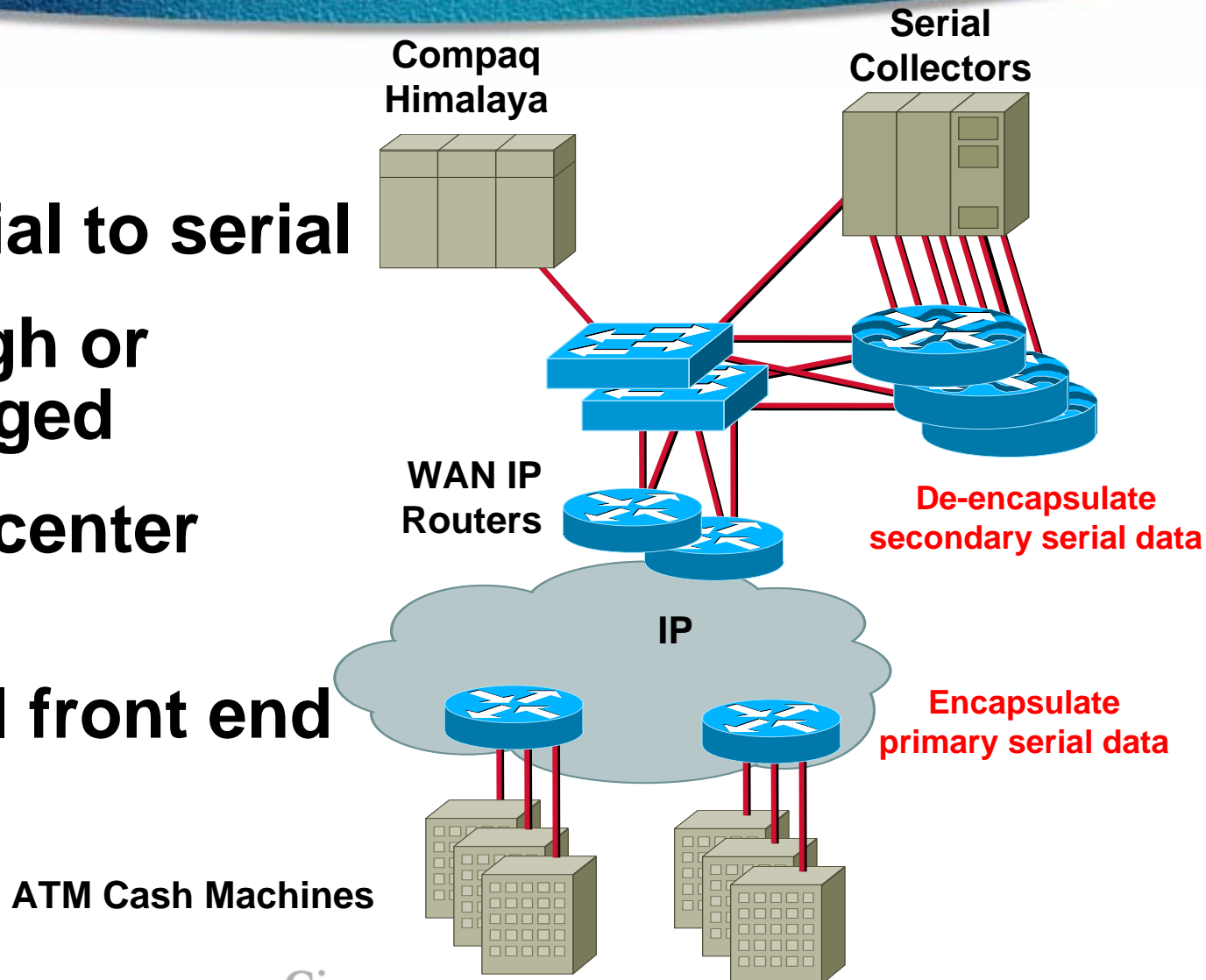


Why BIP?

- **More than 20,000 Bisync cash machines**
- **Many connect to BASE24 on Tandem computers**
- **New ATMs use TCP, connect to same application**
- **Serial connections to Tandem increasing in cost**
- **Vendors exiting legacy/serial markets**
 - Fewer options, higher costs, increased risk**

Today's Solution: Bisync to the Switch

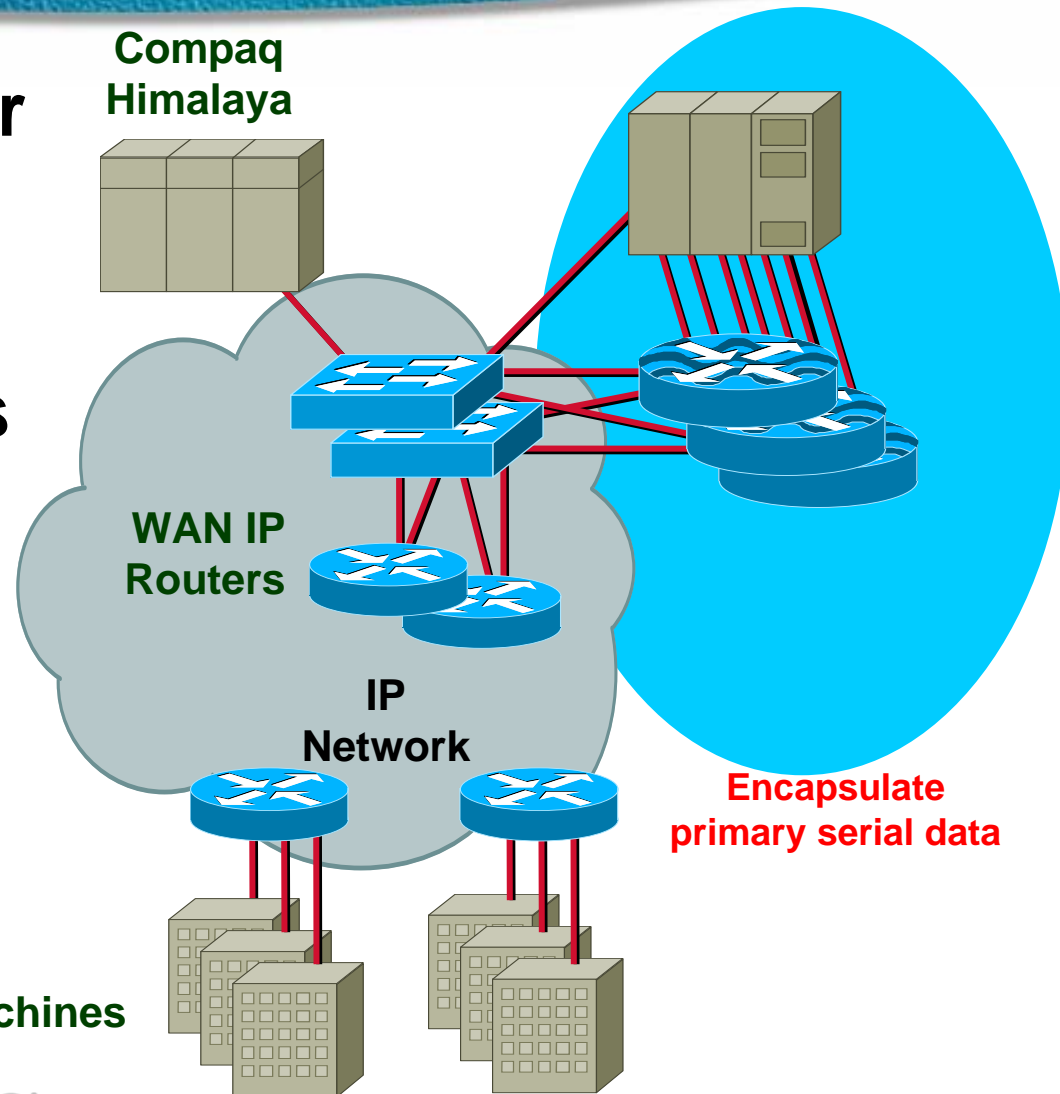
- Tunnel serial to serial
- Passthrough or acknowledged
- Extra data center routers
- Extra serial front end



BIP Solution: IP to the Host

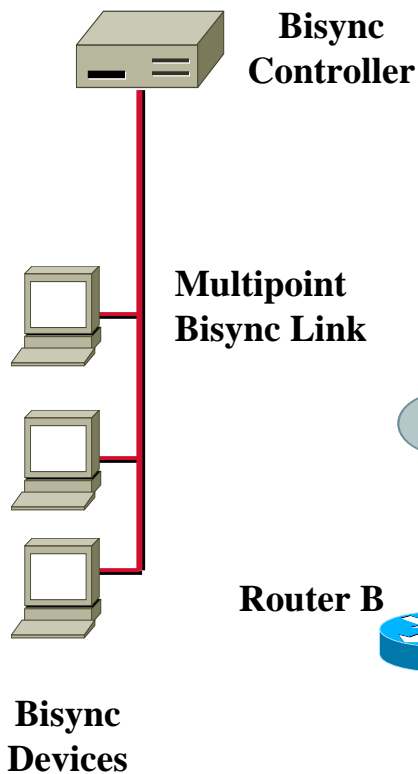
- **Convert serial header to TCP/IP header**
- **Cash machines controlled by routers**
- **No extra data center routers**
- **No serial front end**
- **IP directly in to host**

ATM Cash Machines

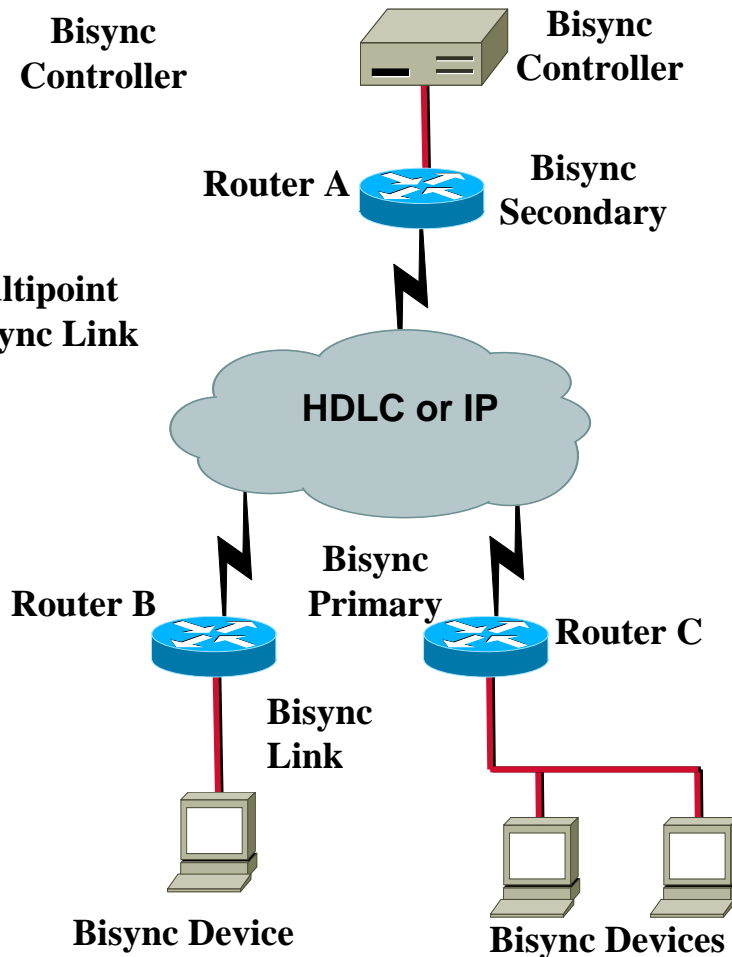


BIP Solution

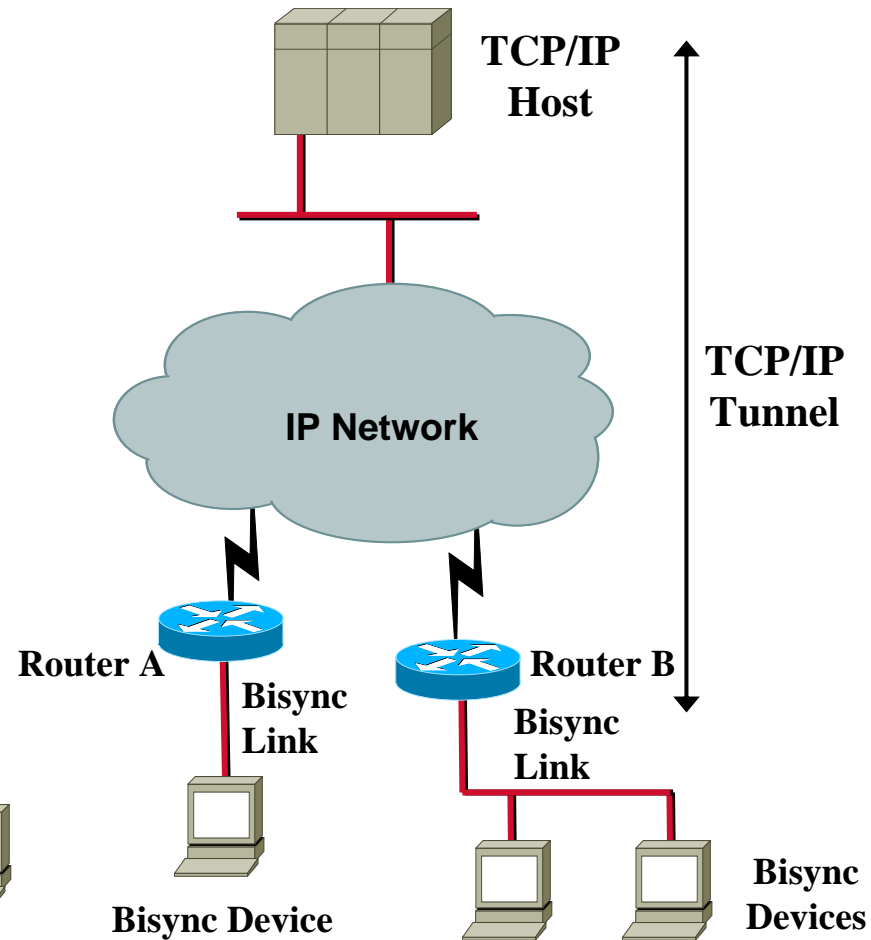
Existing Bisync Devices



Setup Using Cisco Routers

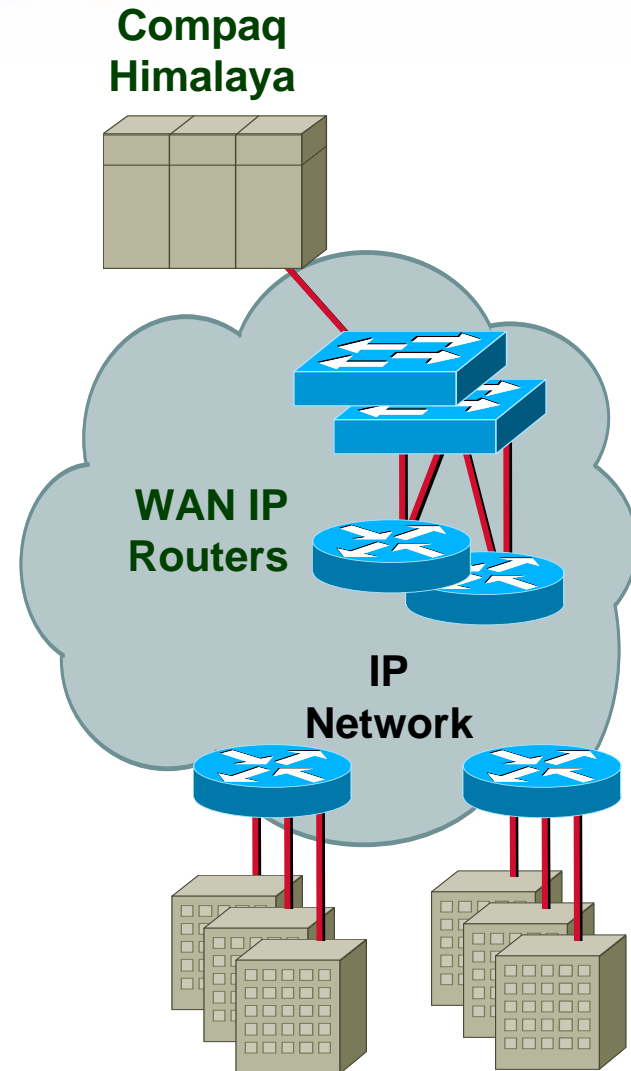


Cisco Bisync Support with BIP



BIP Solution Benefits

- **No need to replace existing Bisync ATMs**
- **Reduced cost by eliminating**
 - Serial connections to the host**
 - Expensive front-end serial processors to the host**
 - Head-end router in data center that previously did Bisync**
- **Dynamic nature of IP routing leading to improved network performance**



CISCO SYSTEMS



EMPOWERING THE
INTERNET GENERATIONSM