

# Cisco ONS 15310-MA SONET Multiservice Platform—At-A-Glance

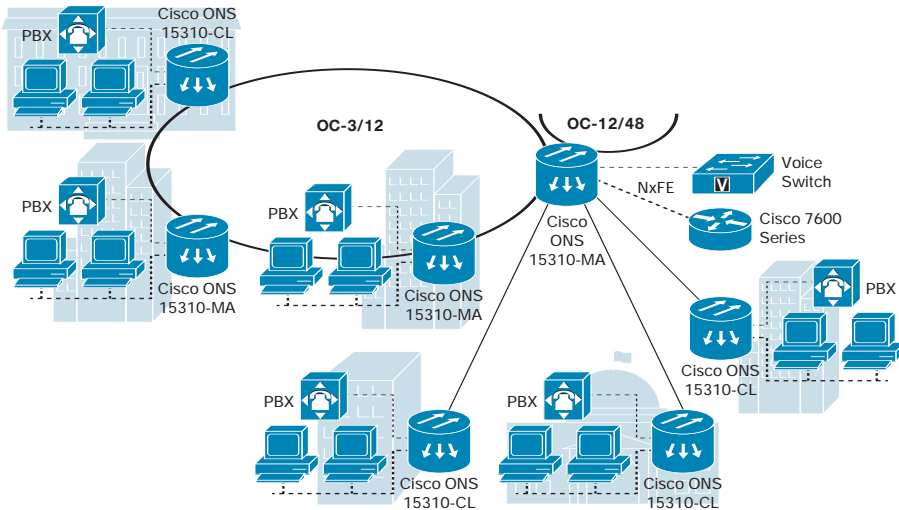
## High-Density Multiservice Metropolitan Aggregation Platform for Service Provider and Enterprise Telecommunication Applications

### The Cisco ONS 15310-MA

The Cisco® ONS 15310-MA is the second platform in the ONS 15310 Series. The Cisco ONS 15310-CL platform is optimized for customer-located multiservice applications and supports the delivery of a mix of DS-1, DS-3/EC-1, and Ethernet services. The Cisco ONS 15310-MA platform extends this successful design to add additional time-division multiplexing (TDM) and Ethernet capacity, as well as controller and switch fabric redundancy and extended temperature range (ITEMP) support.

### What Problems Need to be Solved?

The Cisco ONS 15310-MA sits between the smaller ONS 15310-CL and the larger ONS 15454 platforms in terms of capacity. The Cisco ONS 15310-MA offers a solution for Ethernet+TDM applications that require OC-48 trunks and full platform redundancy, but will not grow to require an OC-192-capable platform such as the ONS 15454. The Cisco ONS 15310-MA is GR-3108 compliant for extended environment temperature applications. Examples where the Cisco ONS 15310-MA fits well include applications for carrier metro aggregation, for wireless carrier backhaul from cell towers, and for large business customers who lease SONET facilities directly from carriers.



### Cisco Optical Multiservice Provisioning Platforms

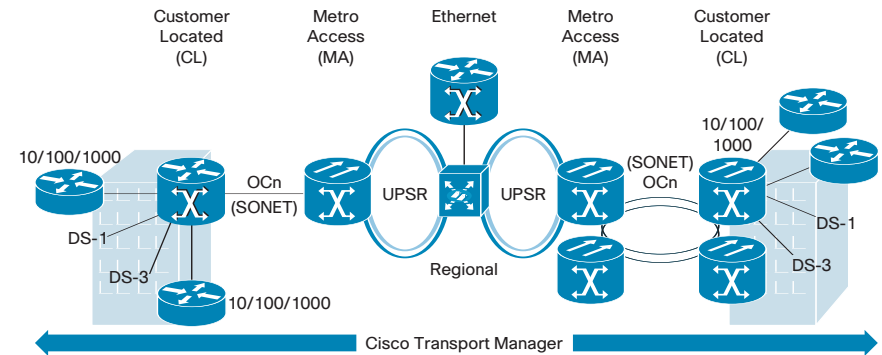
The Cisco ONS 15310-MA is a component of the comprehensive Cisco portfolio of optical transport equipment that also includes:

- Cisco ONS 15454 Multiservice Provisioning Platform, capable of supporting DS-1 through OC-192 TDM services, Ethernet, storage, and advanced Cisco Reconfigurable Add/Drop Multiplexing (ROADM)-capable DWDM
- Cisco ONS 15310-CL Edge Multiservice Platform, providing up to 21 DS-1, 3 DS-3/EC-1, and 8 Ethernet ports in a compact 1-rack-unit (1RU)-high chassis optimized for customer premises applications
- Cisco ONS 15600 Core Switching Platform, capable of terminating up to 32 OC-192 interfaces or 128 OC-48 interfaces within a single chassis for core multiservice applications

### Benefits of the Cisco ONS 15310-MA

The Cisco ONS 15310-MA combines the service flexibility and redundancy of the Cisco ONS 15454 with the smaller size of the Cisco ONS 15310-CL. In fact, the ONS 15310-MA is 6RU high, but narrow enough that two systems can be mounted side by side in a standard 23-inch-wide rack to double effective capacity. Despite its compact size, each Cisco ONS 15310-MA chassis can support a mix of the following:

- Up to 168 DS-1 and 6 DS-3/EC-1 interfaces
- Up to 32 10/100 Ethernet interfaces
- Quad OC-3, OC-12, or OC-48 SONET uplinks



### Why Cisco?

Cisco has achieved tremendous success with its optical multiservice platforms, with more than 50,000 Cisco ONS 15454 products deployed to date. Only Cisco can provide an end-to-end optical transport solution that combines Metro Ethernet Forum (MEF)-certified Ethernet and TDM delivery that can also meet the stringent IP service-level agreements (SLAs) needed for low-latency data services, such as voice over IP (VoIP) and IPTV. Furthermore, the Cisco ONS 15310-MA is backed by Cisco outstanding customer service and technical support.

