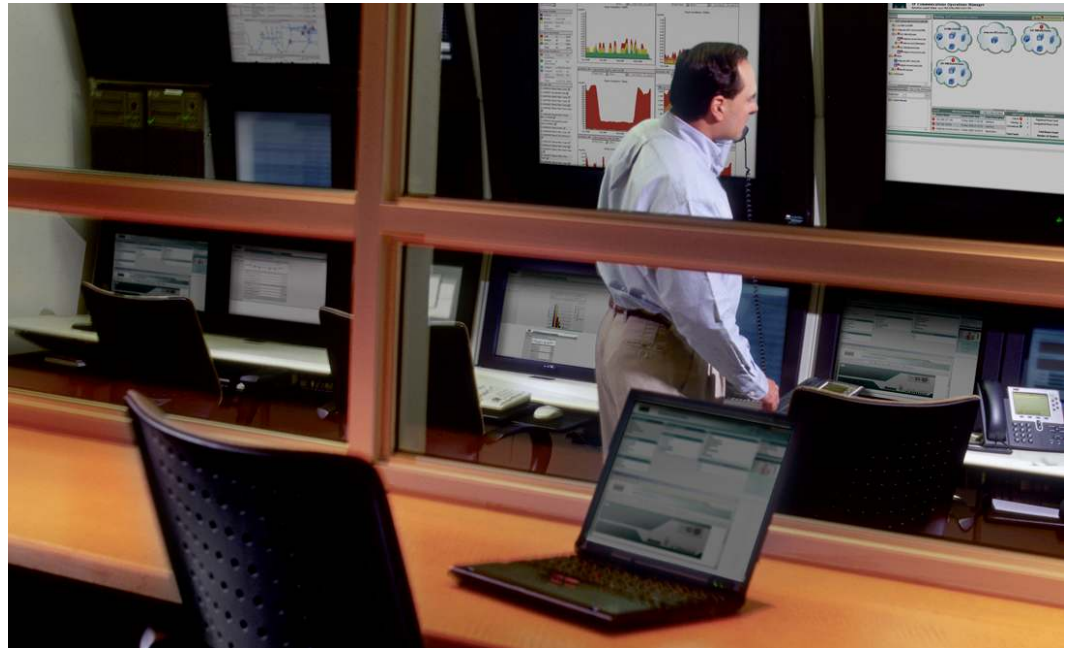


## Cisco Transport Manager 8.0

PB390368



### Product Overview

Cisco® announces Cisco Transport Manager 8.0, an intelligent element management system (EMS) that supports the latest versions of Cisco ONS Family network elements along with the Cisco Carrier Routing System (CRS-1), Cisco XR 12000 Series Router, Cisco 7609, Cisco MGX® 8880 Media Gateway, and the voice-enabled Cisco MGX 8850 and MGX 8830 Multiservice Switches.

Cisco Transport Manager intelligently supports configuration, fault, performance, and security management and serves as a foundation for integration into a larger, overall OSS environment. Table 1 lists the new features available in Cisco Transport Manager 8.0; for further detail on new features refer to your sales representative.

### New Features

Following is a list of new key features added in Cisco Transport Manager 8.0.

**Table 1.** New Features in Cisco Transport Manager 8.0

Feature	Description
<b>Operating system</b>	Cisco Transport Manager 8.0 requires Sun Solaris 10 (Hardware Release 06/06) and Java Run Time 1.5.0 (JSE 1.5.0 Update 6) for the server platform and Windows 2000, Windows XP, or Solaris 10 for the client.
<b>Table customization</b>	Users can customize their table views. Customization is done by hiding or unhiding columns and changing column sizes and positions. Changes can be saved at the user level.

<b>Bulk performance monitoring setting</b>	Each user can enable or disable performance monitoring collection on multiple nodes at the same time.
<b>Support access to Cisco nodes through non-Cisco Gateway nodes</b>	Management of an IP network, connected across an external OSI network, is now supported. Access to the IP network is through a non-Cisco Gateway Network Element (GNE) that operates the Transaction Language 1 (TL1) translation device mediation function.
<b>Scheduling of inventory export</b>	Scheduled export of inventory data for MGX Voice Gateway equipment and for Cisco IOS® Software XR-based devices (CRS-1 and XR 12000) is now supported.
<b>Scheduling of software activation</b>	A user can schedule activation of stand-by software on the node, which supports software activation, at a specific time.
<b>Circuit enhancements</b>	Users can review the route manually provisioned and change the constraints by adding or removing nodes and spans for both dense wavelength-division multiplexing (DWDM) circuits and SONET/SDH circuits.
<b>Workflow GUI</b>	The Configuration Center supports an XML-driven workflow GUI to assist user during configuration.
<b>Support of IEEE 802.17 Resilient Packet Ring (RPR)</b>	Users can provision the setup parameters of an IEEE 802.17 RPR using a GUI. During the provisioning, users can designate an ML-1000 data card as a working or protected card (ML1000 1+1 protection).
<b>Support of IP SLA feature on data cards</b>	IP SLA is an application embedded in Cisco IOS Software. This application allows customers to monitor service-level agreements (SLAs) on IP networks. In Cisco Transport Manager 8.0, users can create an IP SLA session between a pair of data cards or a data card and a nondata card IP using a GUI.
<b>Versioning support on data cards</b>	The versioning feature allows users to delay software activation on data cards when new software is activated on a network element. This helps to retain existing Layer 2 topologies when the network element is upgraded to a newer version.
<b>Support of SNMPv3 for MGX</b>	SNMPv3 provides a secure communications channel from Cisco Transport Manager 8.0 to MGX using authentication and encryption. Users can manage their SNMPv3 profile and view real-time SNMPv3 statistics for Cisco MGX nodes that are configured for SNMPv3 in the Diagnostic Center.
<b>Extension of TL1 northbound Interface to ONS 15600 SDH</b>	With Cisco Transport Manager 8.0, northbound interface support is extended to Cisco ONS 15600 SDH R8.0, now that the node supports the TL1 agent.
<b>Support of TMF v3.0 standard for CORBA northbound interface</b>	The CORBA northbound interface is compliant with TMF 814 v3.0 for provisioning operations.

## Supported Network Elements

Following is a list of network elements and software versions supported by Cisco Transport Manager 8.0.

- Cisco ONS 15216 100-GHz Optical Add/Drop Multiplexer (OADM) Releases 2.2.2, 2.2.3
- Cisco ONS 15216 100-GHz DWDM Red/Blue filters
- Cisco ONS 15216 Erbium-Doped Fiber Amplifier 2 (EDFA2) Releases 2.3, 2.4
- Cisco ONS 15216 EDFA3 Release 1.1
- Cisco ONS 15216 200-GHz OADM, EDFA1, DWDM filters, Optical Supervisory Channel (OSC), and Dispersion Compensation Unit (DCU)
- Cisco ONS 15216 FlexLayer
- Cisco ONS 15302 Multiservice Customer Access Platform Releases 2.0.1, 2.0.2
- Cisco ONS 15305 Multiservice Customer Access Platform Releases 2.0.2, 2.0.3, 3.0.5
- Cisco ONS 15310-CL SONET Multiservice Platform Releases 5.0.8, 6.0.1, 6.2, 6.2.2, 7.0, 7.0.2, 7.0.4, 7.2, 7.2.2, 8.0
- Cisco ONS 15310-MA SONET Multiservice Platform Releases 7.0, 7.0.2, 7.0.4, 7.2, 7.2.2, 8.0
- Cisco ONS 15327 SONET Multiservice Platform Releases 4.1.4, 4.1.82, 4.6.6, 5.0.4, 5.0.8, 6.0.1, 6.2, 6.2.2, 7.0, 7.0.2, 7.0.4, 7.2, 7.2.2

- Cisco ONS 15454 SONET Multiservice Platform Releases 4.1.4, 4.1.6, 4.1.82, 4.6.5, 4.6.6, 4.7 (MSTP only), 5.0.6, 5.0.8, 6.0, 6.0.1, 6.0.2 (MSPP only), 6.2, 6.2.2, 7.0, 7.0.1 (MSTP only), 7.0.2, 7.0.3 (MSTP only), 7.0.4, 7.2, 7.2.2 , 8.0
- Cisco ONS 15454 SDH Multiservice Platform Releases 4.6.3, 5.0.6, 6.0, 6.0.1, 6.2, 6.2.2, 7.0, 7.0.1 (MSTP only), 7.0.2, 7.0.3 (MSTP only), 7.0.4, 7.2, 7.2.2, 8.0
- Cisco ONS 15501 DC Release 4.1
- Cisco ONS 15501 AC Release 4.1
- Cisco IOS<sup>®</sup> Software Releases 12.2(29)SV for the Cisco ONS 15530
- Cisco IOS Software Releases 12.2(29)SV for the Cisco ONS 15540 Extended Services Platform (EXP)
- Cisco IOS Software Releases 12.2(29)SV for the Cisco ONS 15540 ESPx
- Cisco ONS 15600 SONET Multiservice Switching Platform (MSSP) Releases 1.3.1, 5.0.8, 6.0.1, 6.2, 6.2.2, 6.2.4, 7.0, 7.0.2, 7.0.4, 7.2, 7.2.2, 8.0
- Cisco ONS 15600 SDH MSSP Release 1.4, 8.0
- Cisco ONS 15800 DWDM ANSI Platform Release 2.1
- Cisco ONS 15801 DWDM ETSI Platform Release 2.1
- Cisco ONS 15808 DWDM Platform Release 2.2
- Cisco CRS-1 Releases 3.2, 3.2.1, 3.2.2, 3.3, 3.3.1, 3.3.2
- Cisco XR 12000 Series Router Releases 3.2, 3.2.1, 3.2.2, 3.3, 3.3.1, 3.3.2
- Cisco IOS Software Releases 12.2.18.SXF for Cisco 7609
- Cisco MDS 9000 Series
- Cisco MGX 8880 Media Gateway Releases 5.2.10, 5.3.10, 5.4.00
- Voice-enabled Cisco MGX 8850 Multiservice Switch Releases 5.2.10, 5.3.10, 5.4.00
- Voice-enabled Cisco MGX 8830 Multiservice Switch Releases 5.2.10, 5.3.10, 5.4.00
- Cisco VISM-PR Releases 3.3.20, 3.3.25, 3.3.30
- Cisco VXSM Releases 5.2.10, 5.3.10, 5.4.00
- Cisco Catalyst<sup>®</sup> OS Released 7.1(1), 7.1(1a) , 7.1(2), 7.2(1), 7.2(2), 7.3(1), 7.3(2), 7.4(2), 7.4(3), 7.5(1), 7.6(1), 7.6(2), 7.6(2a), 7.6(3), 7.6(3a), 7.6(4), 7.6(5), 7.6(6), 8.1(1), 8.1(2), 8.1(3), 8.2(1), 8.3(2) for the Catalyst 6509 Switch

### Upgrade Path

Customers who are running an older version of Cisco Transport Manager and wish to upgrade to Cisco Transport Manager 8.0 should use one of the Cisco Transport Manager Upgrade Kits (UPG).

Existing node right-to-use (RTU) and client licenses are still valid, as these are release independent. Additional licenses need be purchased only when new nodes are being added to the network or additional clients are required.

## Availability

Cisco Transport Manager 8.0 will begin shipping March 30, 2007. Customers can place orders through their normal sales channels beginning March 21, 2007. Existing Cisco Transport Manager customers, with current Cisco Software Application Support plus Upgrades (SASU) contracts not yet expired, can upgrade to Cisco Transport Manager 8.0 using the Cisco Product Upgrade Tool at <http://www.cisco.com/upgrade>.

Starting with Cisco Transport Manager 7.0, only the Cisco Software Application Support (SAS) contract is available.

## Ordering Information

Cisco Transport Manager is made up of the base media kit, additional optional functional components (Gateway/CORBA and High Availability), and client and network element RTU licenses. Table 2 lists the part numbers and descriptions associated with Cisco Transport Manager 8.0.

**Table 2.** Ordering Information

Part Number	Description
<b>Cisco Transport Manager Release Software Product Kits</b>	
<b>CTM-8.0-K9</b>	Cisco Transport Manager 8.0
<b>CTM-8.0-NE10-K9</b>	Cisco Transport Manager 8.0 to manage up to 10 nodes and 5 concurrent clients
<b>CTM-8.0-NE50-K9</b>	Cisco Transport Manager 8.0 to manage up to 50 nodes and 10 concurrent clients
<b>CTM-8.0-NE200-K9</b>	Cisco Transport Manager 8.0 to manage up to 200 nodes and 20 concurrent clients
<b>CTM-8.0-CORBA</b>	Cisco Transport Manager GateWay/CORBA Northbound Interface 8.0
<b>CTM-8.0-HA</b>	Cisco Transport Manager 8.0 High Availability Agent 2.2
<b>Cisco Transport Manager Release Upgrades</b>	
<b>CTM-3.2-8.0-UPG-K9</b>	Cisco Transport Manager 8.0 Upgrade for 3.2.x or earlier to 8.0
<b>CTM-4.0-8.0-UPG-K9</b>	Cisco Transport Manager 8.0 Upgrade for 4.0.x to 8.0
<b>CTM-8.0-UPG-K9</b>	Cisco Transport Manager 8.0 Upgrade for 4.1.x or later to 8.0
<b>CTM-8.0-CORBA-UPG</b>	Cisco Transport Manager GateWay/CORBA Northbound Interface 8.0 Upgrade
<b>CTM-8.0-HA-UPG</b>	Cisco Transport Manager 8.0 High Availability Agent 2.2 Enhanced Upgrade
<p><b>Note:</b> Cisco SAS is available for all the above-listed applications and related upgrades. The purchase of an annual Cisco SAS maintenance contract entitles you to free upgrades to minor and maintenance application releases, access to the Cisco.com Software Center for patches and bug fixes, and Cisco Technical Assistance Center (TAC) support. Refer to your Cisco sales representative for further information.</p>	
<b>Cisco Transport Manager License Upgrades</b>	
<b>CTM-NE10TO50-UPG</b>	Cisco Transport Manager to manage up to 50 nodes, License Upgrade
<b>CTM-NE50TO200-UPG</b>	Cisco Transport Manager to manage up to 200 nodes, License Upgrade
<b>CTM-NE200UNL-UPG</b>	Cisco Transport Manager to manage up to maximum number of nodes, License Upgrade
<b>Cisco Transport Manager Client RTU Licenses</b>	
<b>CTM-CLIENT-001, -010, -050</b>	Cisco Transport Manager Client RTU License (1 RTU, 10 RTU block, 50 RTU block)
<b>Cisco Transport Manager Network Element RTU Licenses</b>	
<b>CTML-15216-001</b>	Cisco Transport Manager RTU License for Cisco ONS 15216—1 RTU
<b>CTML-15216-010, 050</b>	Cisco Transport Manager RTU License for Cisco ONS 15216 (10 block, 50 block)

<b>CTML-15302-001</b>	Cisco Transport Manager RTU License for Cisco ONS 15302—1 RTU
<b>CTML-15302-025</b>	Cisco Transport Manager RTU License for Cisco ONS 15302 (25 block)
<b>CTML-15305-001</b>	Cisco Transport Manager RTU License for Cisco ONS 15305—1 RTU
<b>CTML-15305-025</b>	Cisco Transport Manager RTU License for Cisco ONS 15305 (25 block)
<b>CTML-15310-001</b>	Cisco Transport Manager RTU License for Cisco ONS 15310CL—1 RTU
<b>CTML-15310-025, -100</b>	Cisco Transport Manager RTU License for Cisco ONS 15310CL (25 block, 100 block)
<b>CTML-15530-001</b>	Cisco Transport Manager RTU License for Cisco ONS 15530—1 RTU
<b>CTML-15540-001</b>	Cisco Transport Manager RTU License for Cisco ONS 15540—1 RTU
<b>CTML-15327-001</b>	Cisco Transport Manager RTU License for Cisco ONS 15327—1 RTU
<b>CTML-15327-025</b>	Cisco Transport Manager RTU License for Cisco ONS 15327 (25 block)
<b>CTML-15454-001</b>	Cisco Transport Manager RTU License for Cisco ONS 15454—1 RTU
<b>CTML-15454-025, -050, -100, -500</b>	Cisco Transport Manager RTU License for Cisco ONS 15454 (25 block, 50 block, 100 block, 500 block)
<b>CTML-15454M-001</b>	Cisco Transport Manager RTU License for Cisco ONS 15454 Multishelf—1 RTU
<b>CTML-15454M-005, -025</b>	Cisco Transport Manager RTU License for Cisco ONS 15454 Multishelf (5 block, 25 block)
<b>CTML-15600-001</b>	Cisco Transport Manager RTU License for Cisco ONS 15600—1 RTU
<b>CTML-15600-005, -025</b>	Cisco Transport Manager RTU License for Cisco ONS 15600 (5 block, 25 block)
<b>CTML-1580X-001</b>	Cisco Transport Manager RTU License for Cisco ONS 1580X—1 RTU
<b>CTML-CRS1-8-001</b>	Cisco Transport Manager RTU license to manage (1) Cisco CRS-1 8 Slot Shelf
<b>CTML-CRS1-16-001</b>	Cisco Transport Manager RTU license to manage (1) Cisco CRS-1 16 Slot Shelf
<b>CTML-CRS1LR-001</b>	Cisco Transport Manager RTU license to manage (1) Cisco CRS-1 Logical Router
<b>CTML-XR12000-001</b>	Cisco Transport Manager RTU license to manage (1) Cisco XR 12000
<b>CTML-XR12000-010</b>	Cisco Transport Manager RTU license to manage (10) Cisco XR 12000
<b>CTML-XR12000LR-001</b>	Cisco Transport Manager RTU license to manage (1) Cisco IOS XR 12000 LR
<b>CTML-8880-001</b>	Cisco Transport Manager RTU license to manage (1) Cisco MGX 8880
<b>CTML-8850-001</b>	Cisco Transport Manager RTU license to manage (1) Cisco MGX 8850
<b>CTML-8830-001</b>	Cisco Transport Manager RTU license to manage (1) Cisco MGX 8830
<b>CTML-7609-001</b>	Cisco Transport Manager RTU license to manage (1) Cisco 7609

**Note:** Passive Cisco ONS 15216 network elements that are not actively managed by Cisco Transport Manager, namely the Cisco ONS 15216 200-GHz Filter, ONS 15216 200-GHz OADM, ONS 15216 EDFA1, ONS 15216 OSC, ONS 15216 DCU, and ONS 15216 Unidirectional Filter and MDS 9000 nodes do not require a Cisco Transport Manager RTU. The active Cisco ONS 15216 network elements, namely the Cisco ONS 15216 100-GHz OADM and ONS 15216 EDFA2, do require a Cisco Transport Manager RTU. MDS 9000 Families node are not actively managed by Cisco Transport Manager and therefore do not require Cisco Transport Manager RTU.

## For More Information

For additional product information on Cisco Transport Manager 8.0, please contact your sales representative.



**Americas Headquarters**  
 Cisco Systems, Inc.  
 170 West Tasman Drive  
 San Jose, CA 95134-1706  
 USA  
[www.cisco.com](http://www.cisco.com)  
 Tel: 408 526-4000  
 800 553-NETS (6387)  
 Fax: 408 527-0883

**Asia Pacific Headquarters**  
 Cisco Systems, Inc.  
 168 Robinson Road  
 #28-01 Capital Tower  
 Singapore 068912  
[www.cisco.com](http://www.cisco.com)  
 Tel: +65 6317 7777  
 Fax: +65 6317 7799

**Europe Headquarters**  
 Cisco Systems International BV  
 Haarlerbergpark  
 Haarlerbergweg 13-19  
 1101 CH Amsterdam  
 The Netherlands  
[www-europe.cisco.com](http://www-europe.cisco.com)  
 Tel: +31 0 800 020 0791  
 Fax: +31 0 20 357 1100

Cisco has more than 200 offices worldwide. Addresses, phone numbers, and fax numbers are listed on the Cisco Website at [www.cisco.com/go/offices](http://www.cisco.com/go/offices).

©2007 Cisco Systems, Inc. All rights reserved. CCVP, the Cisco logo, and the Cisco Square Bridge logo are trademarks of Cisco Systems, Inc.; Changing the Way We Work, Live, Play, and Learn is a service mark of Cisco Systems, Inc.; and Access Registrar, Aironet, BPX, Catalyst, CCDA, CCDP, CCIE, CCIIP, CCNA, CCNP, CCSIP, Cisco, the Cisco Certified Internetwork Expert logo, Cisco IOS, Cisco Press, Cisco Systems, Cisco Systems Capital, the Cisco Systems logo, Cisco Unity, Enterprise/Solver, EtherChannel, EtherFast, EtherSwitch, Fast Step, Follow Me Browsing, FormShare, GigaDrive, GigaStack, HomeLink, Internet Quotient, IOS, iPhone, IP/TV, iQ Expertise, the iQ logo, iQ Net Readiness Scorecard, iQuick Study, LightStream, Linksys, MeetingPlace, MGX, Networking Academy, Network Registrar, Packet, PIX, ProConnect, RateMUX, ScriptShare, SlideCast, SMARTnet, StackWise, The Fastest Way to Increase Your Internet Quotient, and TransPath are registered trademarks of Cisco Systems, Inc. and/or its affiliates in the United States and certain other countries.

All other trademarks mentioned in this document or Website are the property of their respective owners. The use of the word partner does not imply a partnership relationship between Cisco and any other company. (0701R)

