

Handelsbanken Group Uses Cisco Routers and SNA Switching Services to Eliminate Outdated Network

As one of Scandinavia's most successful banks, Handelsbanken Group knows a good investment when it sees one. With 550 branches spanning Sweden, Norway, Finland, Denmark, and Great Britain, the cost and logistics of maintaining separate networks for the bank's mission-critical SNA and IP applications was enormous. Investing in Cisco SNA Switching Services (SNASw) netted the bank a faster, more reliable network that is paying off in real dollars, too.

Handelsbanken's two mirrored data centers in Stockholm support Frame Relay network traffic from 450 branch locations in Sweden. According to Lars Wibeck, Handelsbanken's manager of communications, the bank struggled to maintain two separate networks. An older SNA-based network used IBM 3745s as concentrators at seven locations in Sweden and supported the mission-critical bank transactions. A newer IP-based network was used primarily for e-mail and Internet access. "This obviously resulted in double the cost—not only in pure line costs, but also in resources to handle the two networks," Wibeck says.

Handelsbanken's goal was to integrate the legacy SNA network into the new IP network, giving the bank only one network to manage and fund. Wibeck says the staff first considered Cisco Data-Link Switching Plus (DLSw+), but they soon discovered that SNASw was a better fit for their new network. Because SNASw provides for load balancing and redundancy when there are multiple mainframes, it was the obvious choice for their Parallel Sysplex-based mainframe environment.

Cisco experts helped Handelsbanken implement the new network. With Cisco Catalyst® switches and Cisco 2611XM Multiservice routers using Frame Relay network connection in the branches, SNASw uses Enterprise Extender's native IP transport of SNA data to send the bank's transaction data across an IP backbone. In Stockholm, two data centers use Cisco 7200 Series routers with an Asynchronous Transfer Mode (ATM) interface to the network and a Gigabit Ethernet connection to the mainframe, creating a network with blistering speed. Even without the costly and outdated SNA networking equipment, the bank and all of its branches can continue to use its mission-critical SNA applications.

Wibeck is pleased with the results, "The implementation met all our requirements—we have closed down the local concentrators, closed down the SNA network, and now only have one network to handle." Wibeck adds that the investment in a faster, more reliable, and more modern network paid off in other ways also: "It is difficult to give an exact figure, but in all the savings are around \$1 million a year."

Internetworking Topology

- IBM mainframes and servers

Cisco Systems Products

- Cisco 1700, 2500, 2600, 3600, 7200 Series routers
- Cisco Catalyst 1900, 2950, 3500, 4000, 4500, 6500 Series switches

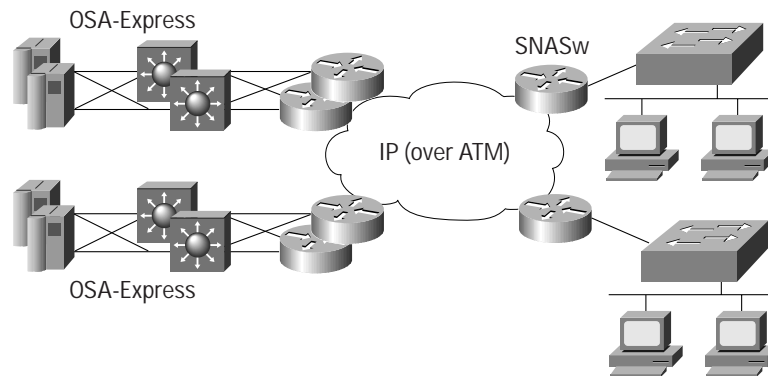
Protocols

- TCP/IP

Network Interfaces

- Frame Relay
- ATM

Handelsbanken's new high-speed, redundant network saves the company approximately \$1 million a year and provides load balancing for its Parallel Sysplex environment.



Corporate Headquarters
Cisco Systems, Inc.
170 West Tasman Drive
San Jose, CA 95134-1706
USA
www.cisco.com
Tel: 408 526-4000
800 553-NETS (6387)
Fax: 408 526-4100

European Headquarters
Cisco Systems International BV
Haarlerbergpark
Haarlerbergweg 13-19
1101 CH Amsterdam
The Netherlands
www-europe.cisco.com
Tel: 31 0 20 357 1000
Fax: 31 0 20 357 1100

Americas Headquarters
Cisco Systems, Inc.
170 West Tasman Drive
San Jose, CA 95134-1706
USA
www.cisco.com
Tel: 408 526-7660
Fax: 408 527-0883

Asia Pacific Headquarters
Cisco Systems, Inc.
Capital Tower
168 Robinson Road
#22-01 to #29-01
Singapore 068912
www.cisco.com
Tel: +65 6317 7777
Fax: +65 6317 7799

Cisco Systems has more than 200 offices in the following countries and regions. Addresses, phone numbers, and fax numbers are listed on the **Cisco Web site at www.cisco.com/go/offices**

Argentina • Australia • Austria • Belgium • Brazil • Bulgaria • Canada • Chile • China PRC • Colombia • Costa Rica • Croatia
Czech Republic • Denmark • Dubai, UAE • Finland • France • Germany • Greece • Hong Kong SAR • Hungary • India • Indonesia • Ireland
Israel • Italy • Japan • Korea • Luxembourg • Malaysia • Mexico • The Netherlands • New Zealand • Norway • Peru • Philippines • Poland
Portugal • Puerto Rico • Romania • Russia • Saudi Arabia • Scotland • Singapore • Slovakia • Slovenia • South Africa • Spain • Sweden
Switzerland • Taiwan • Thailand • Turkey • Ukraine • United Kingdom • United States • Venezuela • Vietnam • Zimbabwe

All contents are Copyright © 1992-2003 Cisco Systems, Inc. All rights reserved. Catalyst, Cisco, Cisco Systems, and the Cisco Systems logo are trademarks or registered trademarks of Cisco Systems, Inc. and/or its affiliates in the U.S. and certain other countries.

All other trademarks mentioned in this document or Web site are the property of their respective owners. The use of the word partner does not imply a partnership relationship between Cisco and any other company.
(0304R) SPS 08/2003