



## Installed Components Tab

---

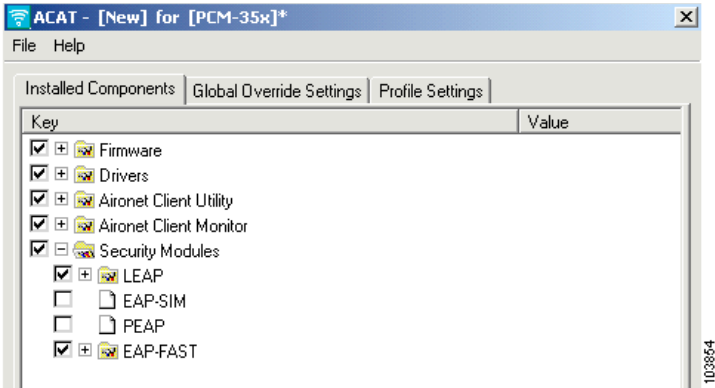
This chapter describes the Installed Components tab options. The following topics are covered in this section:

- [Installed Components Tab Window, page 2-2](#)
- [Firmware, page 2-3](#)
- [Drivers, page 2-3](#)
- [ACU, page 2-4](#)
- [ACM, page 2-5](#)
- [Security Modules, page 2-7](#)

# Installed Components Tab Window

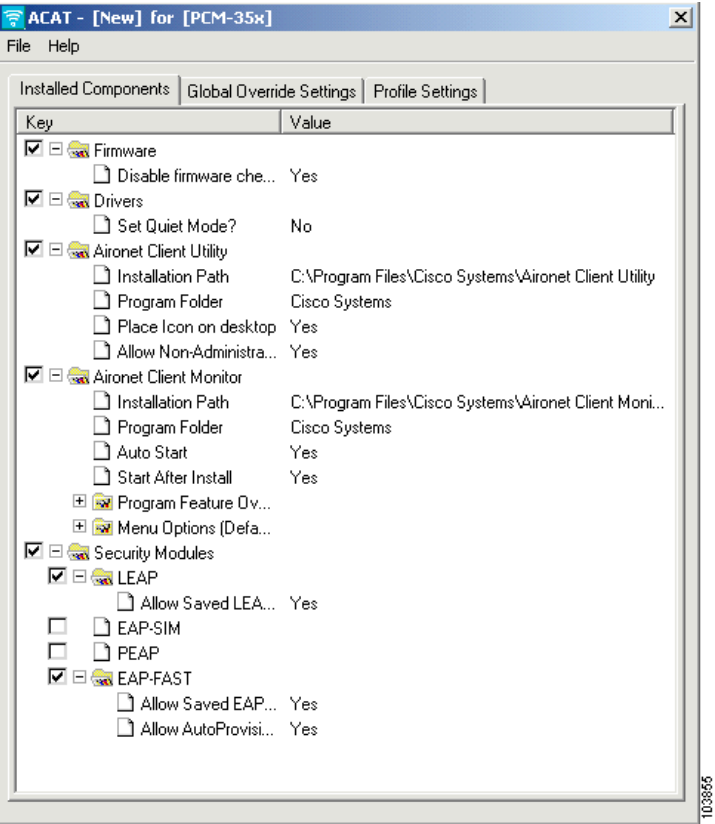
The Installed Components tab enables you to select the software components to be installed by the Install Wizard. All software components are bundled in the Install Wizard software package. Figure 2-1 shows software components on the Installed Components tab.

Figure 2-1 Installed Components Tab Window



To view software component installation parameters, you must expand the selection by clicking the plus/minus box next to the component (see Figure 2-2).

Figure 2-2 Software Component Installation Parameters



The software component check box specifies whether or not the component is installed by the Install Wizard. A check indicates that the component is installed. Check the check box to change the selection.



**Note**

Some components cannot be installed separately. Therefore, when you select or deselect these components, the settings of other components may change. A Dependency Notice window appears when you select or deselect components that cannot be installed separately.

To view the entire component parameter line, use the scroll bar on the bottom of the window or resize the component and value fields.

To change the value of a component parameter, click the parameter value, such as *No*. An option value window appears that enables you to change the value using a drop-down menu. Click **OK** when you have completed your selection.

## Firmware

The client adapter uses the installed firmware to control the radio. [Table 2-1](#) describes the firmware component installation parameters.

**Table 2-1** *Firmware Parameters*

| Parameter                 | Description   |
|---------------------------|---|
| Disable firmware checking | Determines whether the currently installed firmware version is checked during the installation process. When the <i>yes</i> option is selected, firmware checking is disabled to prevent the overwriting of the currently installed firmware. When the <i>no</i> option is selected, the firmware version that is bundled with the Install Wizard is installed.<br><br><b>Options:</b> Yes or No<br><b>Default:</b> Yes |

## Drivers

The client adapter requires a specific driver that interfaces with the operating system and supports the radio firmware functionality. [Table 2-2](#) describes the driver installation parameter.

**Table 2-2** *Driver Parameter*

| Parameter      | Description  |
|----------------|--|
| Set Quiet Mode | Determines whether the client adapter automatically attempts to locate an available access point by transmitting beacon messages or transmits only in response to access point transmissions.<br><br><b>Options:</b> Yes or No<br><b>Default:</b> No |

# ACU

The ACU enables you to configure and change client adapter profile parameters. [Table 2-3](#) describes the ACU installation parameters.

**Table 2-3** ACU Parameters

| Parameter  | Description  |
|--|--|
| Installation Path  | Determines the path in which the ACU software is installed. You can change the default by entering a new path.<br><b>Default:</b> C:\Program Files\Cisco Systems\Aironet Client Utility  |
| Program Folder   | Determines the program folder in which the ACU software is installed. You can change the default by entering a new folder name.<br><b>Default:</b> Cisco Systems   |
| Place Icon on Desktop  | Determines whether the ACU icon is placed on your computer's desktop to provide quick access to the utility.<br><b>Options:</b> Yes or No<br><b>Default:</b> Yes   |
| Allow Non-Administrator Users to Save Settings to the Registry | Enables users without administrative rights to modify profiles in ACU and save them to the registry on computers running Windows 2000 or XP operating systems.<br><b>Options:</b> Yes or No<br><b>Default:</b> Yes<br><b>Note</b> To avoid conflicting settings, check the setting for Allow Non-Admin to Modify Profiles on the Global Override Settings tab. |

# ACM

The ACM operates as an icon in the Window's system tray to quickly monitor and control the client adapter's connection. [Table 2-4](#) describes the ACM parameters.

**Table 2-4** ACM Parameters

| Parameter           | Description   |
|---------------------|---|
| Installation Path   | Determines the path in which the ACM software is installed. You can change the default by entering a new path.<br><b>Default:</b> C:\Program Files\Cisco Systems\Aironet Client Monitor |
| Program Folder      | Determines the program folder where the ACM software is installed. You can change the default by entering a new folder name.<br><b>Default:</b> Cisco Systems                           |
| Auto Start          | Determines whether ACM starts automatically after Windows boots.<br><b>Options:</b> Yes or No<br><b>Default:</b> Yes  |
| Start After Install | Determines whether ACM starts automatically after this application is installed.<br><b>Options:</b> Yes or No<br><b>Default:</b> Yes  |

Table 2-4 ACM Parameters (continued)

| Parameter                       | Description  |         |             |                  |  |              |                                     |                               |                                    |                 |   |             |  |                   |                                     |                |  |                |   |                        |  |                                 |  |                        |  |
|---------------------------------|--|---------|-------------|------------------|--|--------------|-------------------------------------|-------------------------------|------------------------------------|-----------------|---|-------------|--|-------------------|-------------------------------------|----------------|--|----------------|---|------------------------|--|---------------------------------|--|------------------------|--|
| Program Feature Overrides       | <p>Determines which ACM features are enabled and are available for use. If any features are not selected now and you later want to use them, you must run ACAT again, enable the features, create a new configuration file, and run the Install Wizard again.</p> <p><b>Note</b> When disabled, the feature cannot be used and a user cannot enable the feature option by using <b>Preferences</b> from the ACM main menu.</p> <p><b>Features:</b> About Box (Help), Exit Program, Launch Aironet Client Utility, Troubleshooting, Preferences, Turn Radio On/Off, Reauthenticate, Select Profile, Auto Profile Selection, Other Configuration Application, Show Connection Status</p> <p><b>Options per component:</b> Enable or Disable</p> <p><b>Default per component:</b> Enable</p>  |         |             |                  |  |              |                                     |                               |                                    |                 |   |             |  |                   |                                     |                |  |                |   |                        |  |                                 |  |                        |  |
|                                 | <table border="1"> <thead> <tr> <th>Feature</th> <th>Description</th> </tr> </thead> <tbody> <tr> <td>About Box (Help)</td> <td>Displays the ACM version number and enables you to access the online help.</td> </tr> <tr> <td>Exit Program</td> <td>Closes ACM for all client adapters.</td> </tr> <tr> <td>Launch Aironet Client Utility</td> <td>Activates ACU if it was installed.</td> </tr> <tr> <td>Troubleshooting</td> <td>Activates the troubleshooting utility, which enables you to identify and resolve configuration and association problems with your client adapter.</td> </tr> <tr> <td>Preferences</td> <td>Enables you to determine when ACM runs and to select the options that appear on the ACM pop-up menu.</td> </tr> <tr> <td>Turn Radio On/Off</td> <td>Turns the client adapter on or off.</td> </tr> <tr> <td>Reauthenticate</td> <td>Enables you to force your client adapter to try to reauthenticate using the existing name and password of the current profile.</td> </tr> <tr> <td>Select Profile</td> <td>Enables you to select the active profile for your client adapter.</td> </tr> <tr> <td>Auto Profile Selection</td> <td>Causes the client adapter's driver to automatically select a profile from the list of profiles that were set up in ACU to be included in auto profile selection.</td> </tr> <tr> <td>Other Configuration Application</td> <td>Enables an application other than ACU to configure the client adapter.</td> </tr> <tr> <td>Show Connection Status</td> <td>Provides information on the current status of your client adapter.</td> </tr> </tbody> </table> | Feature | Description | About Box (Help) | Displays the ACM version number and enables you to access the online help. | Exit Program | Closes ACM for all client adapters. | Launch Aironet Client Utility | Activates ACU if it was installed. | Troubleshooting | Activates the troubleshooting utility, which enables you to identify and resolve configuration and association problems with your client adapter. | Preferences | Enables you to determine when ACM runs and to select the options that appear on the ACM pop-up menu. | Turn Radio On/Off | Turns the client adapter on or off. | Reauthenticate | Enables you to force your client adapter to try to reauthenticate using the existing name and password of the current profile. | Select Profile | Enables you to select the active profile for your client adapter. | Auto Profile Selection | Causes the client adapter's driver to automatically select a profile from the list of profiles that were set up in ACU to be included in auto profile selection. | Other Configuration Application | Enables an application other than ACU to configure the client adapter. | Show Connection Status | Provides information on the current status of your client adapter. |
| Feature                         | Description  |         |             |                  |  |              |                                     |                               |                                    |                 |   |             |  |                   |                                     |                |  |                |   |                        |  |                                 |  |                        |  |
| About Box (Help)                | Displays the ACM version number and enables you to access the online help.   |         |             |                  |  |              |                                     |                               |                                    |                 |   |             |  |                   |                                     |                |  |                |   |                        |  |                                 |  |                        |  |
| Exit Program                    | Closes ACM for all client adapters.  |         |             |                  |  |              |                                     |                               |                                    |                 |   |             |  |                   |                                     |                |  |                |   |                        |  |                                 |  |                        |  |
| Launch Aironet Client Utility   | Activates ACU if it was installed.   |         |             |                  |  |              |                                     |                               |                                    |                 |   |             |  |                   |                                     |                |  |                |   |                        |  |                                 |  |                        |  |
| Troubleshooting                 | Activates the troubleshooting utility, which enables you to identify and resolve configuration and association problems with your client adapter.  |         |             |                  |  |              |                                     |                               |                                    |                 |   |             |  |                   |                                     |                |  |                |   |                        |  |                                 |  |                        |  |
| Preferences                     | Enables you to determine when ACM runs and to select the options that appear on the ACM pop-up menu.   |         |             |                  |  |              |                                     |                               |                                    |                 |   |             |  |                   |                                     |                |  |                |   |                        |  |                                 |  |                        |  |
| Turn Radio On/Off               | Turns the client adapter on or off.  |         |             |                  |  |              |                                     |                               |                                    |                 |   |             |  |                   |                                     |                |  |                |   |                        |  |                                 |  |                        |  |
| Reauthenticate                  | Enables you to force your client adapter to try to reauthenticate using the existing name and password of the current profile.   |         |             |                  |  |              |                                     |                               |                                    |                 |   |             |  |                   |                                     |                |  |                |   |                        |  |                                 |  |                        |  |
| Select Profile                  | Enables you to select the active profile for your client adapter.  |         |             |                  |  |              |                                     |                               |                                    |                 |   |             |  |                   |                                     |                |  |                |   |                        |  |                                 |  |                        |  |
| Auto Profile Selection          | Causes the client adapter's driver to automatically select a profile from the list of profiles that were set up in ACU to be included in auto profile selection.   |         |             |                  |  |              |                                     |                               |                                    |                 |   |             |  |                   |                                     |                |  |                |   |                        |  |                                 |  |                        |  |
| Other Configuration Application | Enables an application other than ACU to configure the client adapter.   |         |             |                  |  |              |                                     |                               |                                    |                 |   |             |  |                   |                                     |                |  |                |   |                        |  |                                 |  |                        |  |
| Show Connection Status          | Provides information on the current status of your client adapter.   |         |             |                  |  |              |                                     |                               |                                    |                 |   |             |  |                   |                                     |                |  |                |   |                        |  |                                 |  |                        |  |

Table 2-4 ACM Parameters (continued)

| Parameter               | Description  |
|-------------------------|--|
| Menu Options (Defaults) | <p>Determines which menu options are displayed on the ACM pop-up menu. The menu feature must be enabled in Program Feature Overrides before they can be displayed.</p> <p><b>Menu options:</b> About Box (w/Help), Exit Program, Launch Aironet Client Utility, Troubleshooting, Turn Radio On/Off, Reauthenticate, Select Profile, Show Connection Status</p> <p><b>Note</b> You can change the default settings for the feature options by selecting <b>Preferences</b> from the ACM main menu.</p> <p><b>Note</b> If the ACM was previously installed and you changed the menu options, subsequent reinstalls do not revise the menu options.</p> <p><b>Options per menu option:</b> Show or Hide</p> <p><b>Default per menu option:</b> Show</p> |

## Security Modules

The security module software components enable you to install special security modules to support LEAP, EAP-SIM, PEAP, and EAP-FAST with your client adapter. [Table 2-5](#) describes the security module parameters.

Table 2-5 Security Module Parameters

| Parameter                               | Description   |
|---|---|
| LEAP                                    | <p>Enables you to create a profile that uses LEAP authentication. If this option is not selected now and you later want to use LEAP, you must run ACAT again, select this option, create a new configuration file, and run the Install Wizard again.</p> <p><b>Default:</b> Selected</p> <p><b>Note</b> Refer to <a href="#">Chapter 4</a> and <a href="#">Chapter 5</a> for information on LEAP.</p> |
| Allow Saved LEAP User Name and Password | <p>Enables you to create a profile in ACU that uses a saved (rather than temporary) username and password for LEAP authentication. When such a profile is used, the saved username and password are used to start the LEAP authentication process, and you are not prompted to enter them.</p> <p><b>Options:</b> Yes or No</p> <p><b>Default:</b> Yes</p>  |

Table 2-5 Security Module Parameters (continued)

| Parameter | Description  |
|-----------|--|
| EAP-SIM   | <p>Installs the EAP-SIM supplicant, which enables the client adapter to support EAP-SIM authentication. If this option is not selected now and you later want to use EAP-SIM, you must run ACAT again, select this option, create a new configuration file, and run the Install Wizard again.</p> <p><b>Note</b> This feature installs only on PCs running the Windows 2000 or XP operating systems. The Install Wizard does not provide an error message when a profile with EAP-FAST fails to install on a non-supported operating system.</p> <p><b>Default:</b> Deselected</p> <p><b>Note</b> Refer to <a href="#">Chapter 4</a> and <a href="#">Chapter 5</a> for information on EAP-SIM.</p>                                       |
| PEAP      | <p>Installs the PEAP supplicant, which enables the client to support PEAP authentication. If this option is not initially selected and you later want to use PEAP, you must run this installation program again and select this option.</p> <p><b>Note</b> This feature installs only on PCs running the Windows 2000 or XP operating systems. The Install Wizard does not provide an error message when a profile with EAP-FAST fails to install on a non-supported operating system.</p> <p><b>Default:</b> Deselected</p> <p><b>Note</b> Refer to <a href="#">Chapter 4</a> and <a href="#">Chapter 5</a> for information on PEAP.</p>  |
| EAP-FAST  | <p>Installs the EAP-FAST supplicant, which enables the client to support EAP-FAST authentication. If this option is not initially selected and you later want to use EAP-FAST, you must run this installation program again and select this option.</p> <p><b>Note</b> This feature requires a Cisco Aironet 350 Series or CB20A Client Adapter.</p> <p><b>Note</b> This feature installs only on PCs running the Windows 2000 or XP operating systems. The Install Wizard does not provide an error message when a profile with EAP-FAST fails to install on a non-supported operating system.</p> <p><b>Default:</b> Selected</p> <p>Refer to <a href="#">Chapter 4</a> and <a href="#">Chapter 5</a> for information on EAP-FAST.</p> |

Table 2-5 Security Module Parameters (continued)

| Parameter                                   | Description   |
|---|---|
| Allow Saved EAP-FAST User Name and Password | <p>Enables you to create a profile in ACU that uses a saved (rather than temporary) username and password for EAP-FAST authentication. When such a profile is used, the saved username and password are used to start the EAP-FAST authentication process, and you are not prompted to enter them.</p> <p><b>Note</b> The ACU must be used to enter the saved EAP-FAST username and password.</p> <p><b>Options:</b> Yes or No</p> <p><b>Default:</b> Yes</p> |
| Allow Auto Provisioning                     | <p>Enables you to create a profile that automatically acquires a Protected Authentication Credential (PAC) from the EAP-FAST server by sending the username and password.</p> <p><b>Note</b> When auto provisioning is not allowed, the ACU must be used to enter the provisioning information.</p> <p><b>Options:</b> Yes or No</p> <p><b>Default:</b> Yes</p>   |

