



CHAPTER 10

Configuring the Local Area Network Switch

This chapter provides a brief overview of the local area network (LAN) switches (Cisco Catalyst Switch family) in your solution. The LAN switch connects the Cisco MGC hosts to the media gateways (MGWs) or to the Cisco Signaling Link Terminals (SLTs). A LAN switch is not provided with the Cisco MGC.

LAN Switch Overview

The LAN switch is used in the Cisco MGC node to extend virtual LANs (VLANs) across platforms through backbone Ethernet connections, when necessary.

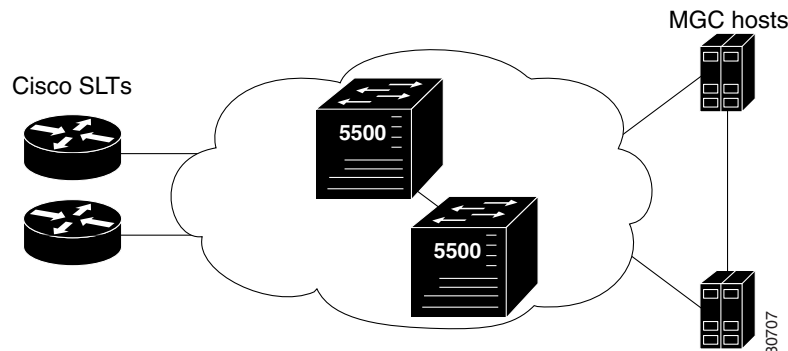
Figure 10-1 illustrates an example of a fault-tolerant control signaling network using dual Cisco Catalyst LAN switches.



Note

Make sure that the duplex on the Cisco catalyst port is correctly configured and that there is no duplex mismatch between the switch and the shelf controller (SC) network interface card (NIC). Otherwise, some SS7 messages, although received at the SC NIC, might be ignored by the SC call processing engine.

Figure 10-1 Sample Configuration of a Duplex LAN Switch



Catalyst 2900 XL Series

See the following web sites for hardware and software documentation for the Catalyst 2900 XL series:

<http://www.cisco.com/warp/public/cc/pd/si/casi/ca2900xl/prodlit/index.shtml>

<http://www.cisco.com/univercd/cc/td/doc/product/lan/c2900xl/index.htm>

Catalyst 5500 and 5000 Series

See the following web sites for hardware and software documentation for the Catalyst 5500 series (5500, 5509, and 5505) and Catalyst 5000 series (5000 and 5002) switches:

http://www.cisco.com/warp/public/cc/pd/si/casi/ca5000/prodlit/lanem_ds.htm

<http://www.cisco.com/univercd/cc/td/doc/product/lan/cat5000/index.htm>

**Note**

For information about the correct Cisco IOS software version, see *Release Notes for the Cisco Media Gateway Controller Software Release 9*.

For information on the image that your switch supports, see the documentation that came with your switch.

If you have questions or need assistance, see the [“Obtaining Documentation, Obtaining Support, and Security Guidelines”](#) section on page xvii of the Preface.