



Version 9.0
Activating and Using the
PDF Module

Edition

Information in this document applies to version 9.0 of the Guide for Activating and Using the PDF Module

Copyright Notice

©2004 Captaris. All rights reserved. No part of this publication may be reproduced, transmitted, transcribed, stored in a retrieval system, or translated into any language in any form by any means without the written permission of Captaris. Captaris products Interchange, RightFax and Teemplate are trademarks of Captaris. All other company, brand and product names are the property and/or trademarks of their respective companies.

Captaris
10885 NE 4th Street
Suite 400
Bellevue, WA 98004
(425) 455-6000
<http://www.captaris.com>

Information in this document is subject to change without notice. Companies, names, and data used in examples herein are fictitious unless otherwise noted.

AGFA *IntelliFont*

JetPCL PCL Emulation Software copyright 1990-2003 Tech Know Systems, Ltd. Company, All rights reserved. Portions copyright ©1999 Ligature. All rights reserved. Portions copyright ©1988, 1996 Aladdin Enterprises. All rights reserved. Portions copyright ©1993 Soft Horizons. All rights reserved. Outside In® Viewer Technology copyright ©1992-2003 Inso Corporation. All rights reserved. Copyright © TMS, Inc. 1994-2002. All rights reserved. Portions copyright ©2001 artofcode LLC. Portions Copyright ©1996, 2001 Artifex Software Inc. Portions Copyright ©1998 Soft Horizons. All Rights Reserved. Adobe, Acrobat, and the Acrobat logo are trademarks of Adobe Systems Incorporated. Includes Adobe® PDF Library technology. All rights reserved. PostScript is a trademark of Adobe Systems Incorporated. This software is based in part on the work of the Independent JPEG Group.

For More Information

Captaris is a leading provider of Business Information Delivery solutions that integrate, process and automate the flow of messages, data and documents. Captaris produces a suite of proven products and services, in partnership with leading enterprise technology companies, delivered through a global distribution network. Captaris has installed over 80,000 systems in 44 countries, with 93 of the Fortune 100 using the company's award-winning products and services to reduce costs and increase the performance of critical business information investments. For more information please contact us at www.captaris.com or call +1.520.320.7000.

Activating and Using the PDF Module

The RightFax PDF module enables conversion of level 1 and level 2 PostScript and PDF (portable document format) documents to TIFF format on the RightFax server for fax transmission. No configuration on the RightFax server is necessary because the server automatically determines whether the document to convert is PostScript, PDF, or the standard PCL-5 format.

When this module is activated, you have the option to use a PostScript print driver to create the RightFax printer on each RightFax client computer. RightFax users can print native PostScript and PDF documents directly to the RightFax printer, and also send rich PDF files (files that include full color and editable data) to e-mail addresses.



Important *The RightFax PDF conversion engine does not support conversion of PDF files that contain embedded TrueType (CID) fonts that use "Identity-H" encoding.*

Activating the PDF Module on the RightFax Server

The files required by the RightFax PDF Module are installed on all RightFax servers during the server installation. However, the PDF Module must be licensed and activated before its functionality will be enabled.

To activate the PDF Module, you must have licensed a RightFax server type that includes this module, or purchased and licensed this module separately. For information on activating new components on the RightFax server, refer to the *RightFax Installation Guide*.

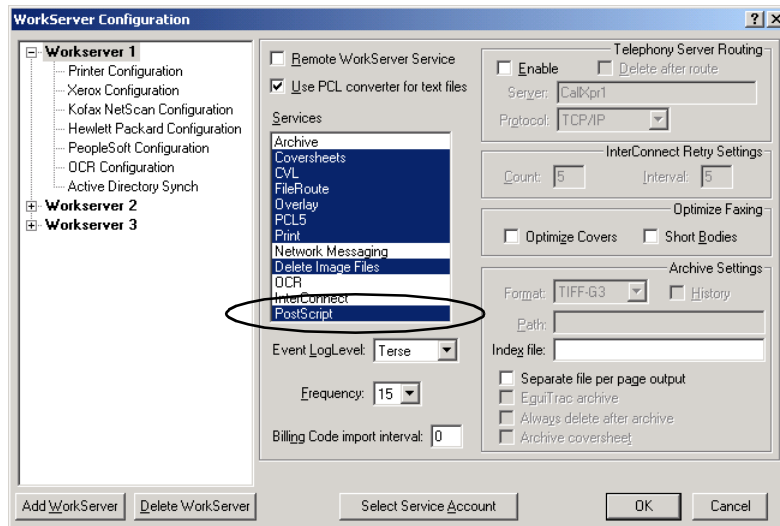
After the RightFax PDF Module has been activated on the RightFax server, you must enable PostScript processing on at least one RightFax WorkServer module (described in the next section) and copy the PostScript fonts you want to support onto the RightFax server.

Enabling PostScript Processing on a WorkServer

After the PDF module is activated, run the WorkServer configuration program from Windows Control Panel on the RightFax server to display the **WorkServer Configuration** dialog

box. In the component tree in the left pane, select the WorkServer that you want to perform PostScript processing. You can enable PostScript processing on as many WorkServers as you want.

Figure 0.1 The WorkServer Configuration dialog box



To enable PostScript processing, click **PostScript** in the **Services** list.

Adding PostScript Fonts

To correctly convert Type 1 PostScript fonts in PostScript and PDF files, the fonts must be copied into the RightFax\Fonts folder. When it is activated, the RightFax PDF module supports 35 basic PostScript fonts including Times, Helvetica, Courier, and Symbol.

To add additional font conversion support, copy the PostScript fonts you want to support into the RightFax\Fonts folder on the RightFax server. Be sure to include both the .pfm and .pfb components of the PostScript fonts.

■ ■ ■