



Installing Required Software

This chapter describes procedures to download and install the required software for installing Cisco BCS Verified Designs. Download all software to your PC *before* configuring Cisco BCS Verified Designs.

Contents

This chapter contains the following sections:

- [Installing Cisco IPC Express QCT, page 7](#)
- [Installing Cisco Security Device Manager, page 12](#)
- [What to Do Next, page 15](#)

Installing Cisco IPC Express QCT

Perform the following steps to install Cisco IPC Express QCT on your PC.



Note

Before installing Cisco IPC Express QCT, make sure that you are a member of the Administrators group under Control Panel > User Account settings.



Note

This installation procedure assumes the use of Windows XP. If you are using another Windows operating system, your display may differ slightly.

Step 1

Download the Cisco IPC Express QCT 1.5.7x.zip file from the following location:

<http://www.cisco.com/cgi-bin/tablebuild.pl/cme-qct>



Note

You must have a valid Cisco CCO account to download Cisco IPC Express QCT.



Note

Cisco IPC Express QCT is supported only under Windows Internet Explorer version 5.5 or later.

Step 2 Unzip and extract the files into an existing folder on your PC.

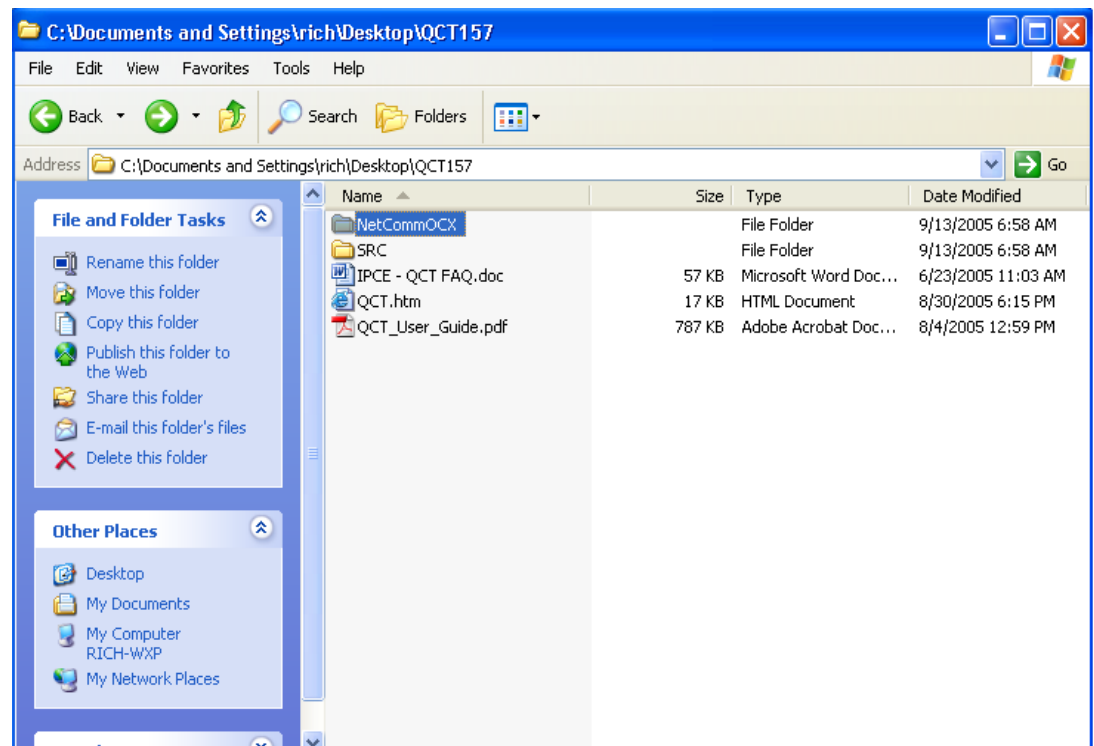
Files will automatically install into your specified folder location, creating a number of subfolders (see [Figure 3](#)):

Figure 3 Cisco IPC Express QCT Extracted Files

Name	Size	Type	Date Modified
NetCommOCX		File Folder	9/4/2005 5:35 PM
SRC		File Folder	9/4/2005 5:35 PM
IPCE - QCT FAQ.doc	57 KB	Microsoft Word Doc...	6/23/2005 11:03 AM
QCT.htm	17 KB	HTML Document	8/30/2005 6:15 PM
QCT_User_Guide.pdf	787 KB	Adobe Acrobat Doc...	8/4/2005 12:59 PM

Step 3 Open the Cisco IPC Express QCT subfolder NetCommOCX (see [Figure 4](#)).

Figure 4 QCT NetCommOCX Folder



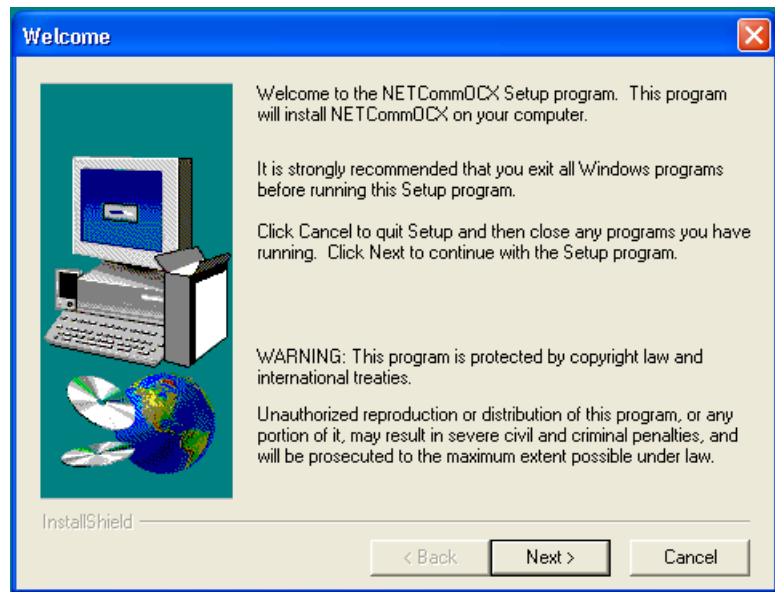
Step 4 Click **SETUP.EXE** to install the necessary serial communications drivers (see [Figure 5](#)).

Figure 5 *SETUPEXE folder*

Name	Size	Type	Date Modified
INST32I.EX	288 KB	EX_ File	3/23/1999 9:12 AM
_ISDEL.EXE	8 KB	Application	3/23/1999 9:12 AM
_SETUP.1	1,628 KB	1 File	6/4/2002 9:59 AM
_SETUP.DLL	6 KB	Application Extension	3/23/1999 9:12 AM
_SETUP.LIB	256 KB	LIB File	6/4/2002 9:59 AM
DISK1.ID	1 KB	ID File	6/4/2002 9:59 AM
NETCommOCXSourceCode.zip	24 KB	WinZip File	6/4/2002 9:58 AM
NETCommTerm.zip	183 KB	WinZip File	6/14/2002 4:38 PM
SETUP.EXE	45 KB	Application	3/23/1999 9:12 AM
SETUP.INI	1 KB	Configuration Settings	6/4/2002 9:59 AM
SETUP.INS	80 KB	Internet Communic...	4/8/1999 11:26 AM
SETUP.ISS	1 KB	ISS File	6/4/2002 9:59 AM
SETUP.PDF	1 KB	Adobe Acrobat Doc...	6/4/2002 9:59 AM
SETUP.PKG	1 KB	PKG File	6/4/2002 9:59 AM
UNSTUB.EXE	24 KB	Application	3/23/1999 9:12 AM
VB6.zip	22 KB	WinZip File	2/1/2002 11:58 AM

The NetCommOCX Welcome banner appears (see [Figure 6](#)).

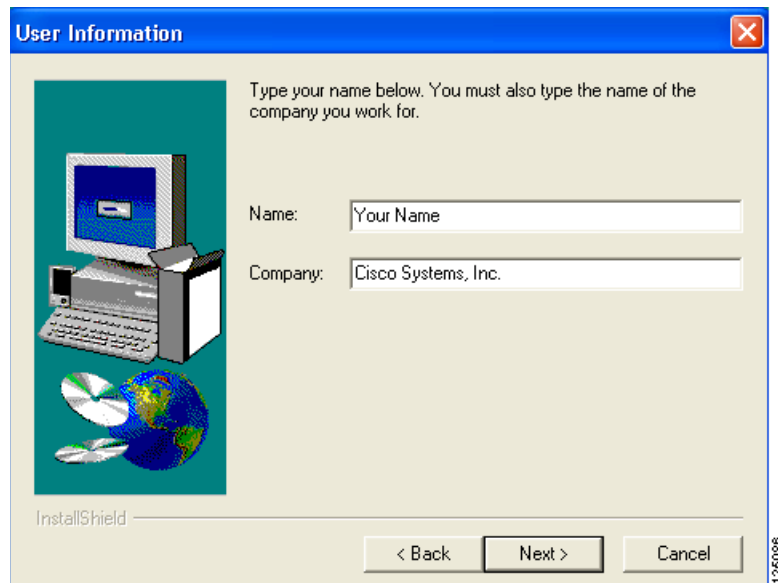
Figure 6 *NetCommOCX SETUPEXE Welcome Banner*



Step 5 Click **Next**.

Step 6 Enter your name and company name in the User Information dialog (see [Figure 7](#)).

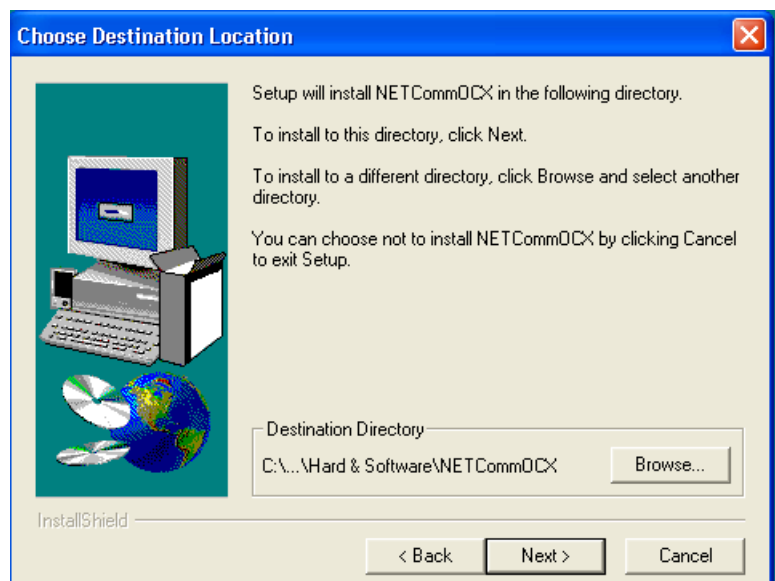
Figure 7 *Install User Information Dialog*



Step 7 Click **Next**.

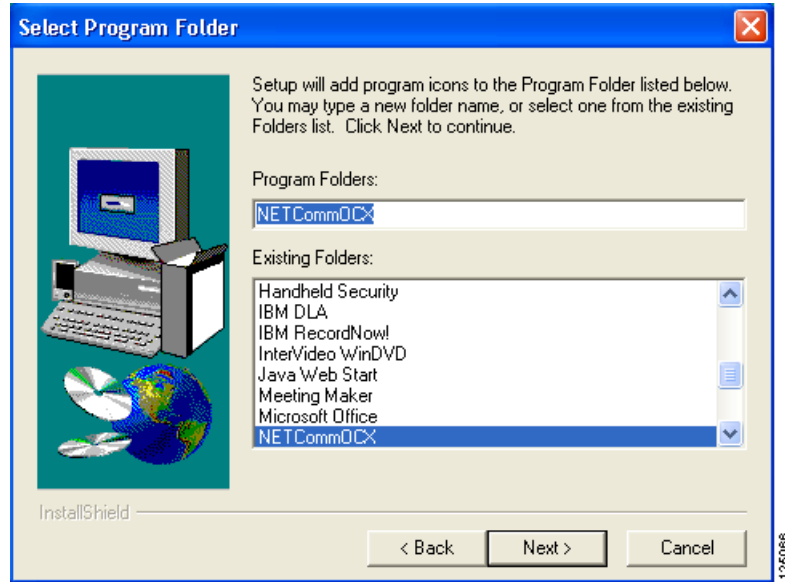
Step 8 Accept the default directory location by clicking **Next**. Or click **Browse** to specify a new destination directory on your PC (see [Figure 8](#)).

Figure 8 *Install Choose Destination Location Dialog*



- Step 9** Specify your program folder location by entering a new name in the Program Folders field or highlight an existing folder in the Existing Folders scroll area (see [Figure 9](#)).

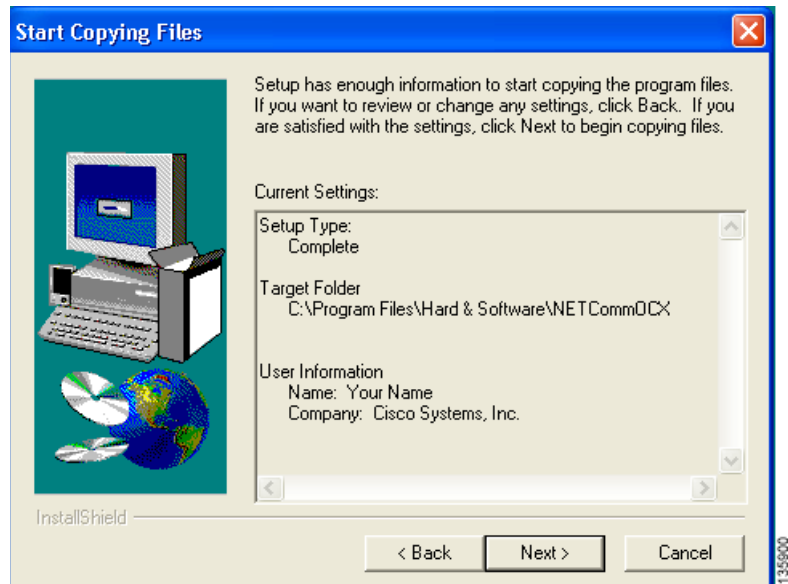
Figure 9 *Install Select Program Folder Dialog*



- Step 10** Click **Next**.

Setup is now ready to begin copying files (see [Figure 10](#)).

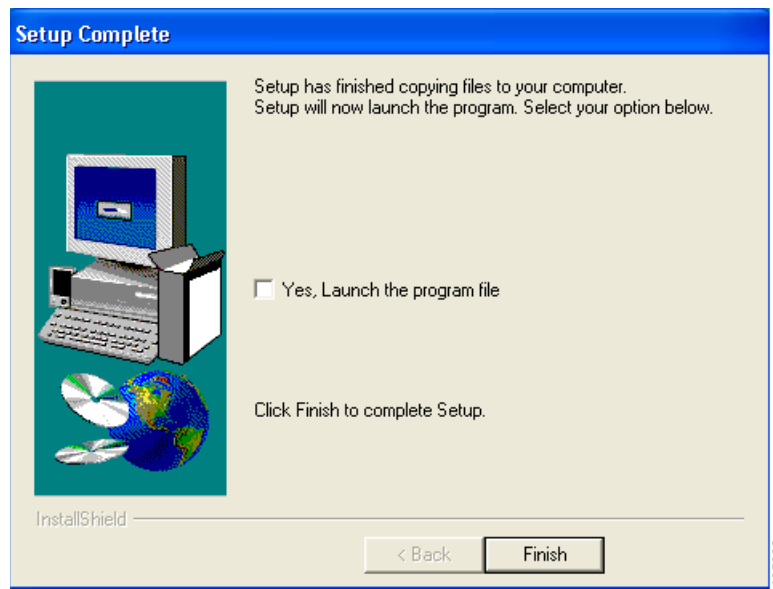
Figure 10 *Start Copying Files Dialog*



- Step 11** Click **Next**.

Step 12 When setup has completed, click **Finish** (see [Figure 11](#)).

Figure 11 Install Setup Complete Dialog



Note

Do not use the Yes, Launch the program file checkbox with this release. To launch Cisco IPC Express QCT refer to [Launching Cisco IPC Express QCT, page 18](#).

Installing Cisco Security Device Manager

This section describes the steps necessary for installing Cisco Security Device Manager (Cisco SDM). For complete information on downloading and installing Cisco SDM, see the SDM Downloading and Installing User Guide at:

http://www.cisco.com/en/US/products/sw/secursw/ps5318/prod_installation_guide09186a00803e4727.html

For complete information on using Cisco SDM, see the Cisco Security Device Manager User's Guide at:

http://www.cisco.com/application/pdf/en/us/guest/products/ps5318/c1626/ccmigration_09186a0080458d7f.pdf

Step 1 Download the `sdm-vnn.zip` file at <http://www.cisco.com/pcgi-bin/tablebuild.pl/sdm>.

Log in using your Cisco.com login user ID and password, and follow the instructions on the Cisco SDM Software page to download the `sdm.vnn.zip` file and the SDM release notes.

Step 2 Double-click the `sdm-vnn.zip` file, and extract the files to a directory on your PC.

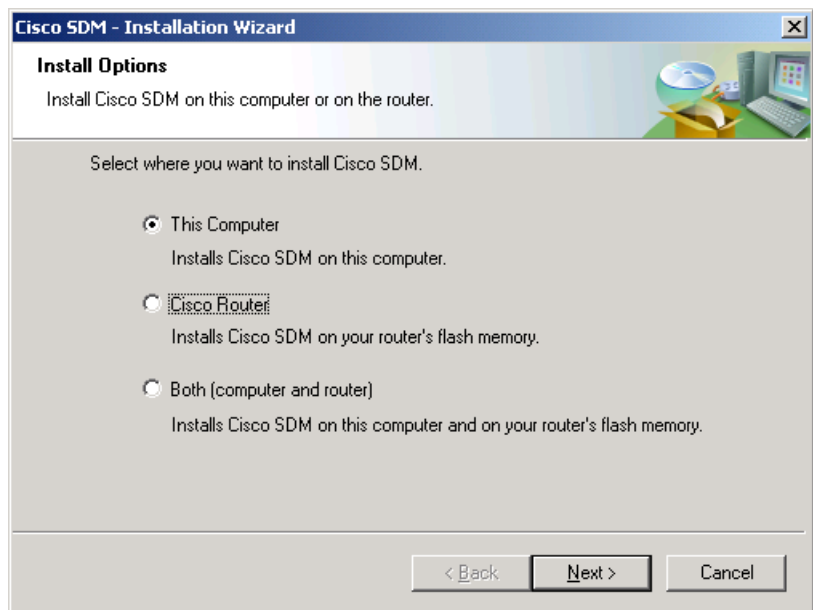
- Step 3** In the directory to which you extracted the contents of the `sdm-vnn.zip` file, double-click the `setup.exe` file. The Cisco SDM Welcome dialog appears (see [Figure 12](#)):

Figure 12 Cisco SDM Welcome Dialog



- Step 4** Click **Next** to display the License screen, accept the license agreement terms, and click **Next** to continue.
- Step 5** When the Install Options dialog appears (see [Figure 13](#)), specify to install Cisco SDM on your PC (This Computer).

Figure 13 Cisco SDM Install Options Dialog



- Step 6** Click **Next**.

After the components are installed, the Cisco SDM Installation Wizard Complete screen appears (see [Figure 14](#)):

Figure 14 Cisco SDM Installation Wizard Complete Dialog



Step 7 If you want to start Cisco SDM when you dismiss the wizard, click **Launch Cisco SDM**. Click **Finish** to dismiss the wizard.

What to Do Next

After installing the required Cisco IPC Express QCT and SDM files, you are ready to enter configuration parameters about your system. See [“Configuring Cisco Business Communications Solution Verified Designs”](#) chapter.

