



Cisco Discovery Protocol Support Configuration

This chapter provides general and procedural information for Cisco Discovery Protocol (CDP).

This chapter contains the following topics:

- [Using CDP Advertisement Support, page 25-1](#)
- [Using the CDP Driver, page 25-2](#)
- [Accessing CDP Driver Control, page 25-2](#)
- [Default CDP Setting, page 25-8](#)

Cisco Discovery Protocol discovers Cisco devices on a network. CDP enables discovery of Cisco CallManager servers and management of those servers by CiscoWorks2000.

Using CDP Advertisement Support

With CDP Advertisement Support, Cisco CallManager periodically sends out CDP messages on the active interface to a designated multicast address. These messages contain information such as device identification, interface name, system capabilities, SNMP agent address, and time to live.

Any Cisco device with CDP support can locate a Cisco CallManager by using these periodic messages. For example, a device can locate Cisco CallManager agent IP addresses using the CDP cache from the direct neighboring devices.

Before You Begin

CDP designates a Windows 2000 Protocol Driver designed to run with Cisco CallManager on a Cisco Media Convergence Server with a 10/100BaseT Ethernet network interface card. It does not support other media, such as Token Ring, ATM, or Windows NT platforms (including Windows 98 or Windows NT 4.0).

Using the CDP Driver

Starting Cisco CallManager enables the CDP driver. You can use CDP to allow CiscoWorks2000 to discover and manage your Cisco CallManager systems.

Once you have used the CDP cache MIB of the direct neighboring device to discover the Cisco CallManager, you can use CiscoWorks2000 to query other Cisco CallManager-supported MIBs for provisions or statistics information about topology services, user tracking, path analysis, and other network management services.



Tip

You can use the **show CDP** command from the direct neighboring device of Cisco CallManager to check CDP information advertised by Cisco CallManager.

Accessing CDP Driver Control

You can control the CDP driver using the CISCO-CDP-MIB. When you are using CiscoWorks2000, you must keep the CDP driver enabled at all times to discover Cisco CallManager.



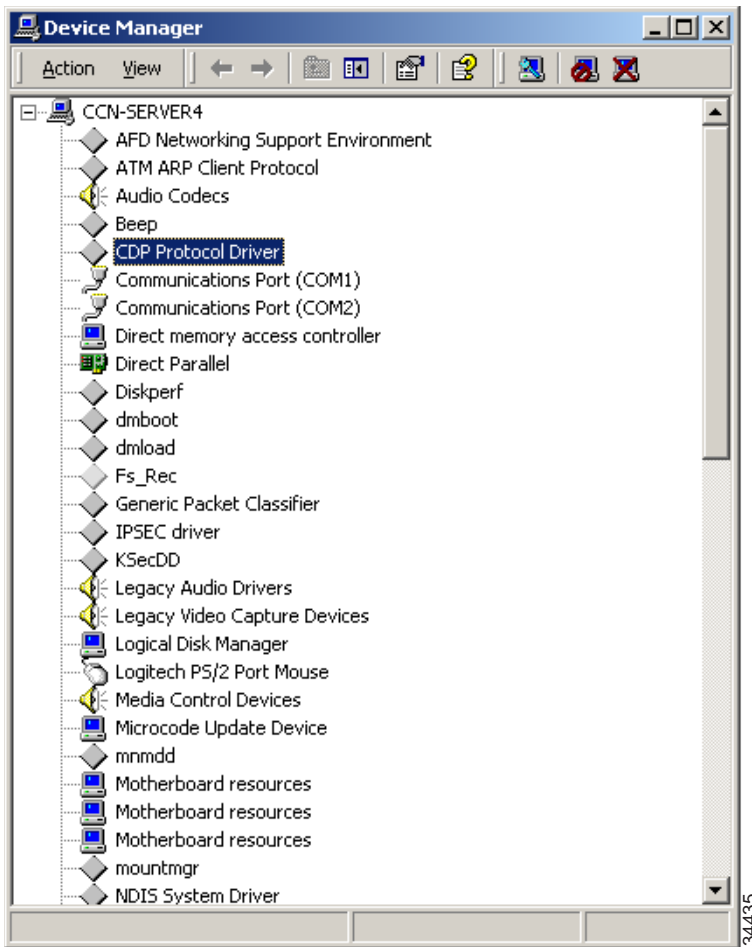
Caution

You should alter the CDP setting only in special cases. For example, you might restart the CDP driver from the control panel at run time to pick up the latest IP configuration changes without resetting the system.

Installing the CDP Protocol Driver

The Cisco CallManager installation process installs the CDP driver. [Figure 25-1](#) illustrates that, upon completion of a successful Cisco CallManager installation, the CDP protocol driver resides in the list of device drivers under the Windows 2000 control panel.

Figure 25-1 Device Manager Menu



Starting the CDP Protocol Driver

This section describes how to start the CDP protocol driver.

Procedure

- Step 1 Choose **Start > Settings > Control Panel**.
- Step 2 Double-click **System**.
- Step 3 Click the **Hardware** tab.
- Step 4 Click the **Device Manager** button.
The Device Manager window displays.
- Step 5 Choose **View > Devices by connection**.
- Step 6 Choose **View > Show hidden devices**.
- Step 7 Double-click **CDP Protocol Driver**.
- Step 8 Click the **Driver** tab.
- Step 9 Click the **Start** button to enable the driver (Default = Start).
- Step 10 Click the **OK** button.
- Step 11 Start the Cisco RIS data collector service (see [Starting the Cisco RIS Data Collector](#), page 28-8, for more details).



Note Choosing **Startup Type=Demand** keeps **Start** setting after a restart.

Related Topics

- [Installing the CDP Protocol Driver](#), page 25-3
- [Enabling the CDP Protocol Driver](#), page 25-5
- [Showing CDP Protocol Driver Property](#), page 25-6
- [Updating an IP Address for CDP Protocol Driver](#), page 25-6
- [Locating Updated CDP Driver and Interface Files](#), page 25-7

Enabling the CDP Protocol Driver

This section describes how to enable the CDP protocol driver.

Procedure

- Step 1 Choose **Start > Settings > Control Panel**.
 - Step 2 Double-click **System**.
 - Step 3 Click the **Hardware** tab.
 - Step 4 Click the **Device Manager** button.
The Device Manager window displays.
 - Step 5 Choose **View > Devices by connection**.
 - Step 6 Choose **View > Show hidden devices**.
 - Step 7 Double-click **CDP Protocol Driver**.
 - Step 8 Click the **Driver** tab.
 - Step 9 Choose **Enable Device**.
 - Step 10 Choose **Next**; then, choose **Finish** to enable device.
 - Step 11 Choose **Close** and restart the system.
 - Step 12 After the system is up, start the Cisco RIS data collector service.
-

Related Topics

- [Installing the CDP Protocol Driver, page 25-3](#)
- [Starting the CDP Protocol Driver, page 25-4](#)
- [Showing CDP Protocol Driver Property, page 25-6](#)
- [Updating an IP Address for CDP Protocol Driver, page 25-6](#)
- [Locating Updated CDP Driver and Interface Files, page 25-7](#)

Showing CDP Protocol Driver Property

This section describes how to show CDP protocol driver property.

Procedure

- Step 1** Choose **Start > Run**.
 - Step 2** Enter `\WINNT\System32\drivers` in the Run field.
 - Step 3** Click the **OK** button.
 - Step 4** Right-click `cdp.sys`.
 - Step 5** Choose Properties to show CDP driver properties, such as driver version and date.
 - Step 6** Click the **OK** button.
-

Related Topics

- [Installing the CDP Protocol Driver, page 25-3](#)
- [Starting the CDP Protocol Driver, page 25-4](#)
- [Enabling the CDP Protocol Driver, page 25-5](#)
- [Updating an IP Address for CDP Protocol Driver, page 25-6](#)
- [Locating Updated CDP Driver and Interface Files, page 25-7](#)

Updating an IP Address for CDP Protocol Driver

The CDP protocol driver runs on top of the existing Ethernet network interface card. You can restart CDP when a new IP address is configured at run time.

This section describes how to update the CDP protocol driver.

Procedure

-
- Step 1** Restart CDP using the **Device Manager** to update the CDP driver with the new IP address information.
- Step 2** You do not have to reset the system after updating.
-

Related Topics

- [Installing the CDP Protocol Driver, page 25-3](#)
- [Starting the CDP Protocol Driver, page 25-4](#)
- [Enabling the CDP Protocol Driver, page 25-5](#)
- [Showing CDP Protocol Driver Property, page 25-6](#)
- [Locating Updated CDP Driver and Interface Files, page 25-7](#)

Locating Updated CDP Driver and Interface Files

Installing Cisco CallManager updates these components:

- The CDP driver (cdp.sys) updates to the Windows 2000 driver directory (WINNT\System32\Drivers\cdp.sys).
- The CDP Interface Library (cdpintf.dll) updates to the Windows 2000 System32 directory (\WINNT\System32\cdpintf.dll).
- A Backup **Regedit** export file for reinstalling CDP registries updates to the bin directory (\Program Files\Cisco\Bin\cdp2k101.reg). Use this file to restore the CDP registry in case it becomes corrupted.
- After running the cdp2k101.reg file, you must perform a system reset to restore the CDP registries.

Default CDP Setting

Table 25-1 provides the default CDP settings.

Table 25-1 Default CDP Settings

Description	Default Value
Default Transmit Frequency	60 seconds
Default Time to Live	180 seconds
Default State	CDP advertisement enabled