



Cisco Unity Messaging Integration

Cisco Unity is a Windows NT and Windows 2000-based communications solution that delivers voice mail and unified messaging in a unified environment.

Unified messaging means that all types of messages can be managed from the same Inbox. Cisco Unity works in concert with an embedded Exchange server to collect and store all messages—including voice, fax, and e-mail—in one logical message store. Users can then access voice, fax, and e-mail messages on a computer, through a touchtone phone, or over the Internet.

For complete, step-by-step instructions on how to integrate Cisco CallManager with the Cisco Unity messaging system, refer to the *Cisco CallManager Integration Guide*.

This section covers the following topics:

- [System Requirements, page 23-2](#)
- [Integration Description, page 23-3](#)
- [Cisco Unity Configuration Checklist, page 23-4](#)
- [Where to Find More Information, page 23-5](#)

System Requirements

The following lists provide requirements for your phone system and the Cisco Unity server:

Phone System

- Cisco CallManager software, version 3.0(9) or later, running on a Cisco IP telephony applications server.
- Cisco licenses for all phone lines, IP phones, and other H.323-compliant devices or software (such as Cisco Virtual Phone and Microsoft NetMeeting clients) that will be connected to the network, as well as one license for each Cisco Unity port.
- IP phones for the Cisco CallManager extensions.
- A LAN connection in each location where you will plug an IP phone into the network.

Cisco Unity Server

- Cisco Unity, Version 3.0(1) or later, installed and ready for the integration as described in the *Cisco Unity Installation Guide*.
- A system key with the integration type set to “TAPI” and with the appropriate number of voice-messaging ports enabled. If you are integrating Cisco Unity with two phone systems (Cisco CallManager and a second, non-IP phone system), you must set the integration type on the system key to “Multiple Integrations.”
- A Cisco license for each Cisco Unity port.

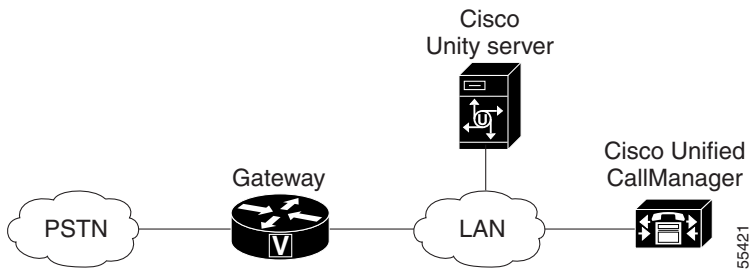
Integration Description

Figure 23-1 shows a full-featured Cisco Unity installation integrating with the Cisco Architecture for Voice, Video and Integrated Data (AVVID) network.

**Note**

Some countries require a phone system between the public phone network and the gateway.

Figure 23-1 Connections Between the Phone System and Cisco Unity



The following steps give an overview of the path an external call takes through the Cisco AVVID network.

1. When an external call arrives, the Cisco gateway sends the call over the LAN to the machine on which Cisco CallManager is installed.
2. For Cisco CallManager lines that are configured to route calls to Cisco Unity, CallManager routes the call to an available Cisco Unity extension.
3. Cisco Unity answers the call and plays the opening greeting.
4. During the opening greeting, the caller enters either the name of a subscriber or an extension, for example, 1234.

5. Cisco Unity notifies Cisco CallManager that it has a call for extension 1234.
6. At this point, the path of the call depends on whether Cisco Unity is set up to perform supervised transfers or release transfers. Refer to the *Cisco CallManager Integration Guide* for more information.

Cisco Unity Configuration Checklist

Table 23-1 provides steps to configure the Cisco Unity voice-messaging system.

Table 23-1 Cisco Unity Configuration Checklist

Configuration Steps		Procedures and Related Topics
Step 1	Ensure you have met the system requirements for Cisco CallManager and Cisco Unity.	See the “ System Requirements ” section on page 23-2. Refer to the <i>Cisco CallManager Integration Guide</i> .
Step 2	Add voice mail ports for each port that you are connecting to Cisco Unity.	Refer to the “ Cisco Voice Mail Configuration ” section in the <i>Cisco CallManager Administration Guide</i> . Refer to the <i>Cisco CallManager Integration Guide</i> .
Step 3	Specify MWI and voice mail extensions.	Refer to the “ Service Parameters Configuration ” section in the <i>Cisco CallManager Administration Guide</i> . Refer to the <i>Cisco CallManager Integration Guide</i> .
Step 4	Enable the DTMF relay feature in the gateways.	Refer to the gateway documentation for the model of gateway you are configuring. Refer to the <i>Cisco CallManager Integration Guide</i> .

Table 23-1 Cisco Unity Configuration Checklist (continued)

Configuration Steps		Procedures and Related Topics
Step 5	Install, configure, and test the TAPI service provider.	Refer to the <i>Cisco CallManager Integration Guide</i> .
Step 6	Configure Cisco Unity for the integration.	Refer to the <i>Cisco CallManager Integration Guide</i>
Step 7	Test the integration.	Refer to the <i>Cisco CallManager Integration Guide</i> . Refer to the installation guide for the phone system. Refer to the <i>Cisco Unity Troubleshooting Guide</i> .

Where to Find More Information

Additional Cisco Documentation

- [Cisco Voice Mail Configuration](#), *Cisco CallManager Administration Guide*
- [Service Parameters Configuration](#), *Cisco CallManager Administration Guide*
- *Cisco CallManager Integration Guide*
- *Cisco Unity Installation Guide*
- *Cisco Unity Troubleshooting Guide*

■ Where to Find More Information