



Configuring Cisco BTS 10200 Components

This chapter contains the following topics:

- [Configuring a Cisco BTS 10200 EMS Server, page 4-1](#)
- [Adding a Component to the Cisco BTS 10200 Configuration, page 4-6](#)
- [Editing a Component in the Cisco BTS 10200 Configuration, page 4-9](#)
- [Deleting a Component From the Cisco BTS 10200 Configuration, page 4-11](#)
- [Bulk Command Provisioning, page 4-12](#)
- [Checking the Status and Controlling Components, page 4-15](#)

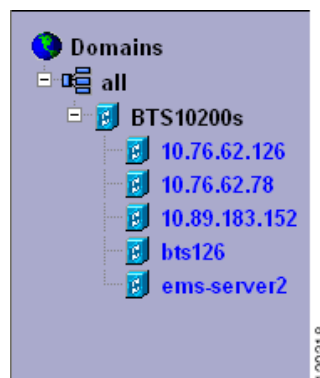
Configuring a Cisco BTS 10200 EMS Server

Use this procedure after you have added a new Cisco BTS 10200 EMS server to the Cisco EPOM inventory. (See the [“Adding a Cisco BTS 10200 EMS Server”](#) section on page 3-11.)

Step 1 In the navigation pane, expand the domain tree:

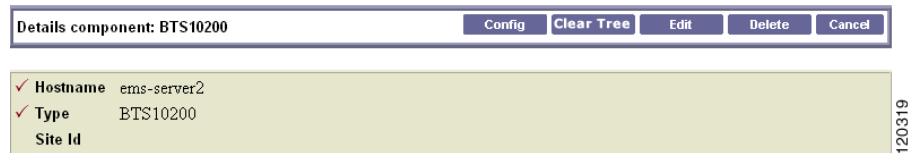
- a. Click **all**.
- b. Click **BTS10200s**.

You will see the Cisco BTS 10200 EMS servers currently in the inventory. In this example, there are two servers: bts126 and ems server 2.



REVIEW DRAFT – CISCO CONFIDENTIAL

- Step 2** Click the Cisco BTS 10200 EMS server that you want to configure.
The Details window opens, as shown in this example:



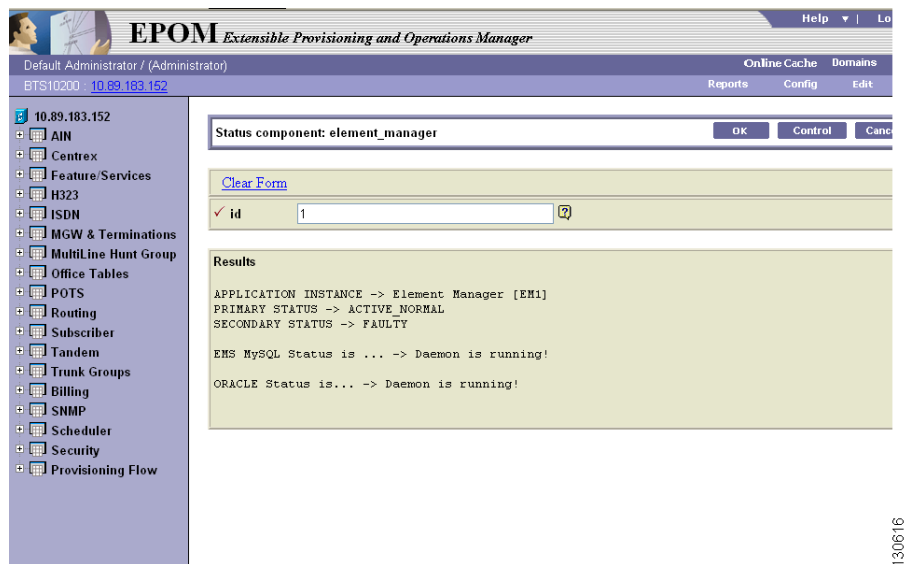
- Step 3** Click **Config**.
The Component Status window opens (see Step).

The navigation pane shows the Configuration tree, and the content area shows the status of the selected Cisco BTS 10200 EMS server.

**Note**

The first access of the Cisco BTS 10200 EMS server component status may take a few seconds.

To show or change the Cisco BTS 10200 EMS server configuration, click objects in the Configuration tree. See the “[Adding a Component to the Cisco BTS 10200 Configuration](#)” section on page 4-6.



About Cisco EPOM Templates

Cisco EPOM templates allow you to compose and save templates that can be used later for creating Cisco BTS 10200 Softswitch objects. With a template you can add several similar objects to the Cisco EPOM inventory without having to repeatedly select configuration items for each individual device.

Templates are stored on the Cisco EPOM server by Cisco BTS noun and template name.

Templates can be created, viewed, and applied by all levels of Cisco EPOM users. (See “[Creating a Template From an Existing Template](#)” section on page 4-3)

REVIEW DRAFT – CISCO CONFIDENTIAL

Administrators can edit and delete all existing templates, whereas Users can edit and delete only the templates that they created. (See the “Editing a Cisco EPOM Template” section on page 4-4 and the “Deleting a Cisco EPOM Template” section on page 4-6.)

One template for each device type can be identified as the default template. When you add a device, the default template for this type of device is loaded automatically. If necessary, you can select a different template for this device. (See the “Designating a Default Cisco EPOM Template” section on page 4-5.)

Templates are applied only when creating an object (during an Add operation). (See the “Applying a Cisco EPOM Template” section on page 4-8.)

Creating a New Cisco EPOM Template

The ID field is unique to each device and cannot be repeated among devices. Assign a unique ID for the device before adding it to the Cisco EPOM inventory. You can either specify a value in the ID field to be used as a prefix, or leave a blank field that forces the user to specify a valid, unique ID.

-
- Step 1** In a Domain view, select the **Desired domain > BTS10200s > The desired Cisco BTS EMS server**
- Step 2** Click on **Config**. The Cisco BTS 10200 Component Status view opens.
- Step 3** In the Configuration tree, select **Office Tables > Call_agent**.
The Cisco BTS 10200 Component view opens showing a list of call agents.
- Step 4** Select a call agent and click **Details**.

| Details component: cust_grp | |
|---|-----------|
| Check All Clear All Details Edit Delete | |
| Template: Save new template name | |
| <input checked="" type="checkbox"/> | |
| id | cust-1212 |
| ani_wb_list | NONE |
| collect_pin | Y |
| dnis_pattern | |
| ii_restrict_list | WHITE |
| num_pin_digits | |
| overflow_carrier | |
| overflow_pots | |
| route_guide_id | rt_gd |

- Step 5** Enter or change information in the fields.
- Step 6** Enter a name for the template and click on **Save**.

The created template contains field information from the Details Component window.

Creating a Template From an Existing Template

The ID field is unique to each device and cannot be repeated among devices. Assign a unique ID for the device before adding it to the Cisco EPOM inventory. You can either specify a value in the ID field to be used as a prefix, or leave a blank field that forces the user to specify a valid, unique ID.

REVIEW DRAFT – CISCO CONFIDENTIAL

- Step 1** In a Domain view, select the **Desired domain > BTS10200s > The desired Cisco BTS EMS server.**
- Step 2** Click **Config.**
- The Cisco BTS 10200 Component Status view opens.
- Step 3** In the Configuration tree, select **Template Manager > Templates.**
- A list of templates is displayed.
- Step 4** Select a template and click **Details.**

| Template Details[noun, templateName]: [cust_grp, NewT] | |
|--|-----------|
| Template: Save new template name | |
| ani_wb_list | NONE |
| collect_pin | Y |
| id | cust-1212 |
| ii_restrict_list | WHITE |
| route_guide_id | rt_gd |

- Step 5** Enter or change information in the fields
- Step 6** Enter a new template name and click **Save.**
- The new template is stored under the specified name.

Editing a Cisco EPOM Template

To edit a Cisco EPOM Template:

- Step 1** In a Domain view, select the **Desired domain > BTS10200s > The desired Cisco BTS EMS server.**
- Step 2** Click **Config.**
- The Cisco BTS 10200 Component Status view opens.
- Step 3** In the Configuration tree, select **Template Manager > Templates.**
- A list of templates is displayed.

| Templates | | | |
|---|---------------|---------|---|
| Check All Clear All Delete Selected | | | |
| Noun | Template Name | Default | Commands |
| <input type="checkbox"/> cust_grp | NewT | No | [Details] [Edit] [Delete] |
| <input type="checkbox"/> cust_grp | call_agent | No | [Details] [Edit] [Delete] |

- Step 4** Select a noun and template and click **Edit.**
- The Edit Template window is displayed.

REVIEW DRAFT – CISCO CONFIDENTIAL

If necessary, make changes to the information in the fields and click **OK** to save changes.

Designating a Default Cisco EPOM Template

To designate a default Cisco EPOM Template:

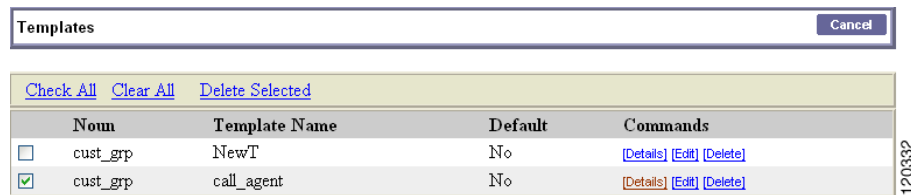
- Step 1** In a Domain view, select the **Desired domain > BTS10200s > The desired Cisco BTS EMS server.**
- Step 2** Click **Config**.
The Cisco BTS 10200 Component Status view opens.
- Step 3** In the Configuration tree, select **Template Manager > Templates**.
A list of templates is displayed (see the “Editing a Cisco EPOM Template” section on page 4-4).
- Step 4** Select a noun and template and click **Edit**.
The Edit Template window is displayed

- Step 5** Select the Default template checkbox.
- Step 6** Click **OK** to save changes.

REVIEW DRAFT – CISCO CONFIDENTIAL**Deleting a Cisco EPOM Template**

To delete a Cisco EPOM Template:

-
- Step 1** In a Domain view, select the **Desired domain > BTS10200s > The desired Cisco BTS EMS server.**
- Step 2** Click **Config**.
The Cisco BTS 10200 Component Status view opens.
- Step 3** In the Configuration tree, select **Template Manager > Templates**.
A list of templates is displayed.



| Templates | | | |
|---|---------------|------------|---|
| Check All Clear All Delete Selected | | | |
| Noun | Template Name | Default | Commands |
| <input type="checkbox"/> | cust_grp | NewT | No [Details] [Edit] [Delete] |
| <input checked="" type="checkbox"/> | cust_grp | call_agent | No [Details] [Edit] [Delete] |

- Step 4** Select a noun and template and click **Delete**. After a verification message, the template is deleted.
-

Adding a Component to the Cisco BTS 10200 Configuration

Add components to the Cisco EPOM inventory to build a managed network. The device information includes static and dynamic selections to other parts of the configuration. Follow this example to add a dial plan.

Make sure that you have the configuration information for the component that you want to add to the Cisco EPOM inventory.

-
- Step 1** From the Domain window, select the *domain > BTS10200s > the Cisco BTS 10200 EMS server.*
- Step 2** Click **Config**.
The Cisco BTS 10200 Component Status window opens.
- Step 3** In the Configuration tree, select **Office Tables > dial_plan**.

REVIEW DRAFT – CISCO CONFIDENTIAL

Success: Entries 1-101 of 2071 returned.

Component: dial_plan Add Search

[Check All](#) [Clear All](#) [Details](#) [Edit](#) [Delete](#)

| id ▲ | dest_id | digit_string | Rows: 1 - 100 of 2071 ↗ |
|---|---------------------------|--------------|---|
| <input type="checkbox"/> Dial1 | dst1 | 222 | [Details] [Edit] [Delete] |
| <input type="checkbox"/> Incoming | local-sub | 271201 | [Details] [Edit] [Delete] |
| <input type="checkbox"/> Incoming | local-sub | 271202 | [Details] [Edit] [Delete] |
| <input type="checkbox"/> Incoming | local-sub | 271203 | [Details] [Edit] [Delete] |
| <input type="checkbox"/> Incoming | local-sub | 271204 | [Details] [Edit] [Delete] |
| <input type="checkbox"/> Incoming | local-sub | 271205 | [Details] [Edit] [Delete] |
| <input type="checkbox"/> Incoming | local-sub | 271206 | [Details] [Edit] [Delete] |
| <input type="checkbox"/> Incoming | RLGHNCDS1 | 306291 | [Details] [Edit] [Delete] |
| <input type="checkbox"/> Incoming | local-sub | 306301 | [Details] [Edit] [Delete] |
| <input type="checkbox"/> Incoming | local-sub | 306362 | [Details] [Edit] [Delete] |
| <input type="checkbox"/> Incoming | local-sub | 306391 | [Details] [Edit] [Delete] |

The Cisco BTS 10200 Component window opens showing a list of Dial Plans. If this is the first Dial Plan (or device of this type) that you are adding, the list is empty.

Step 4 Click **Add**.

The Cisco BTS 10200 Component Add window opens.

Add component: dial_plan OK Apply Cancel

[Clear Form](#) Expand range expression

id
 dest_id
 digit_string
 max_digits
 min_digits
 noa
 split_npa
del_digits
pfx_digits

Step 5 Define the device. Required fields are identified with a red checkmark.

Step 6 Click **OK** or **Apply**.

- When you click **OK**, the component is added and the list of components in the Component:*name* window appears.
- When you click **Apply**, the component is added, but you remain in the Add component window for further tasks.

You return to the Cisco BTS 10200 Component window. The new dial plan is added to the list.

REVIEW DRAFT – CISCO CONFIDENTIAL

To edit a single component, see the “Editing a Component in the Cisco BTS 10200 Configuration” section on page 4-9; to delete a single component, see the “Deleting a Component From the Cisco BTS 10200 Configuration” section on page 4-11.

To add, edit, or delete multiple components with a single operation, see the “Bulk Command Provisioning” section on page 4-12.

To search for the other components:

-
- Step 1** Click any component in the Configuration tree.
 - Step 2** Click **Search**. A window with the id and description fields appears.
 - Step 3** Enter the id or description and click OK. All the components with that description get displayed.

You can also search the description by typing the first letter of the description followed by the “%” symbol. All the components starting with that alphabet get displayed.

Applying a Cisco EPOM Template

To apply a Cisco EPOM Template:

-
- Step 1** In a Domain view, select the **Desired domain > BTS10200s > The desired Cisco BTS EMS server**.

- Step 2** Click **Config**.

The Cisco BTS 10200 Component Status view opens

- Step 3** In the Configuration tree, select **Office Tables > dial_plan**.

The Cisco BTS 10200 Component view opens showing a list of dial plans. If this is the first dial plan (or device of this type) that you are adding, the list is empty

Success: Entries 1-101 of 2071 returned.

Component: dial_plan Add Search

[Check All](#) [Clear All](#) [Details](#) [Edit](#) [Delete](#)

| id ▲ | dest_id | digit_string | Rows: 1 - 100 of 2071 ➔ |
|---|---------------------------|--------------|---|
| <input type="checkbox"/> Dial1 | dst1 | 222 | [Details] [Edit] [Delete] |
| <input type="checkbox"/> Incoming | local-sub | 271201 | [Details] [Edit] [Delete] |
| <input type="checkbox"/> Incoming | local-sub | 271202 | [Details] [Edit] [Delete] |
| <input type="checkbox"/> Incoming | local-sub | 271203 | [Details] [Edit] [Delete] |
| <input type="checkbox"/> Incoming | local-sub | 271204 | [Details] [Edit] [Delete] |
| <input type="checkbox"/> Incoming | local-sub | 271205 | [Details] [Edit] [Delete] |
| <input type="checkbox"/> Incoming | local-sub | 271206 | [Details] [Edit] [Delete] |
| <input type="checkbox"/> Incoming | RLGHNCDS1 | 306291 | [Details] [Edit] [Delete] |
| <input type="checkbox"/> Incoming | local-sub | 306301 | [Details] [Edit] [Delete] |
| <input type="checkbox"/> Incoming | local-sub | 306362 | [Details] [Edit] [Delete] |
| <input type="checkbox"/> Incoming | local-sub | 306391 | [Details] [Edit] [Delete] |

120333

REVIEW DRAFT – CISCO CONFIDENTIAL

Step 4 Click **Add**.

The Cisco BTS 10200 Component Add view opens.

Step 5 Select a template from the list.

Step 6 Click **Load**.

Click **OK** or **Apply**.

- When you click **OK**, the component is added and the list of components in the Component name window is displayed.
- When you click **Apply**, the component is added, but you remain in the Add component window for further operations

The new dial plan is added to the list when you return to the Cisco BTS 10200 Component view.

The ID field is unique to each device and cannot be repeated among devices. Assign a unique ID for the device before adding it to the Cisco EPOM inventory. You can either specify a value in the ID field to be used as a prefix, or leave a blank field that forces the user to specify a valid, unique ID.

To create a new template from this window, make changes to the existing component details and save the resulting dial plan as a template by entering a template name and clicking **Save**.

Editing a Component in the Cisco BTS 10200 Configuration

To edit a component in the Cisco BTS 10200 Configuration:

Step 1 From the Domain window select the *domain* > **BTS10200s** > the *Cisco BTS 10200 EMS server*.

Step 2 Click **Config**.

The Cisco BTS 10200 Component Status window opens.

Step 3 In the Configuration tree, choose **Office Tables** > **Dial_plan**.

The Cisco BTS 10200 Component window shows a list of currently configured dial plans.

Step 4 Select the row that you wish to edit and click **Edit**

REVIEW DRAFT – CISCO CONFIDENTIAL

The Change component window appears.

| Change component: dial_plan | | OK | Cancel |
|-----------------------------|-------------------------------------|----------|----------------------|
| Clear Form | | | |
| | <input checked="" type="checkbox"/> | | |
| ✓ id | <input checked="" type="checkbox"/> | Dial1 | <input type="text"/> |
| ✓ digit_string | <input checked="" type="checkbox"/> | 222 | <input type="text"/> |
| ✓ noa | <input checked="" type="checkbox"/> | NATIONAL | <input type="text"/> |
| del_digits | <input type="checkbox"/> | 0 | <input type="text"/> |
| dest_id | <input type="checkbox"/> | dst1 | <input type="text"/> |
| max_digits | <input type="checkbox"/> | 10 | <input type="text"/> |
| min_digits | <input type="checkbox"/> | 10 | <input type="text"/> |
| px_digits | <input type="checkbox"/> | | <input type="text"/> |
| split_npa | <input type="checkbox"/> | NONE | <input type="text"/> |

The first (blank) row with the checked box indicates that the component identified in the window title was selected for displaying details, editing, or deletion.

Step 5 Make the required changes to the attribute fields. To do this:

- a. Enter the new value in the text field or select a new value from the drop down box.
A checkbox appears against the changed field. This checkbox is enabled by default

| Change component: dial_plan | | OK | Cancel |
|-----------------------------|-------------------------------------|----------|----------------------|
| Clear Form | | | |
| | <input checked="" type="checkbox"/> | | |
| ✓ id | <input checked="" type="checkbox"/> | Dial1 | <input type="text"/> |
| ✓ digit_string | <input checked="" type="checkbox"/> | 222 | <input type="text"/> |
| ✓ noa | <input checked="" type="checkbox"/> | NATIONAL | <input type="text"/> |
| del_digits | <input type="checkbox"/> | 0 | <input type="text"/> |
| dest_id | <input checked="" type="checkbox"/> | dst1 | <input type="text"/> |
| max_digits | <input type="checkbox"/> | 10 | <input type="text"/> |
| min_digits | <input checked="" type="checkbox"/> | 10 | <input type="text"/> |
| px_digits | <input type="checkbox"/> | | <input type="text"/> |
| split_npa | <input checked="" type="checkbox"/> | NEW_NPA | <input type="text"/> |

- b. Click **OK** to save changes.

EPOM will send only the checked elements along with the mandatory fields to BTS, instead of sending whole edit page elements. This will update the BTS Server with the new values along with the mandatory attributes.

Mandatory attributes cannot be edited, hence no checkbox will be displayed against it when the user tries to change its value.

**Caution**

If you decide to revert and retain the old values do so before saving. To do this uncheck It can be done the checkbox. This way the old values are send to the database when you click **OK** to save the changes.

You can edit multiple nouns in a single instance. To do this select the nouns which needs to be updated in template and click **Edit**. The browser displays multiple templates

REVIEW DRAFT – CISCO CONFIDENTIAL

| Clear Form | | | |
|--|--------------------------|--------------------------|--------------------------|
| <input checked="" type="checkbox"/> | <input type="checkbox"/> | <input type="checkbox"/> | <input type="checkbox"/> |
| <input checked="" type="checkbox"/> id | dial_p_pro1 | <input type="checkbox"/> | dial_p_pro1 |
| <input checked="" type="checkbox"/> digit_string | 233233 | <input type="checkbox"/> | 233233 |
| <input checked="" type="checkbox"/> noa | NATIONAL | <input type="checkbox"/> | UNKNOWN |
| del_digits | 0 | <input type="checkbox"/> | 0 |
| dest_id | dest_id1 | <input type="checkbox"/> | dest_id2 |
| max_digits | 9 | <input type="checkbox"/> | 10 |
| min_digits | 9 | <input type="checkbox"/> | 9 |
| px_digits | | <input type="checkbox"/> | |
| split_npa | OLD_NPA | <input type="checkbox"/> | NEW_NPA |

130609

An error message is displayed, for a few nouns, while editing attribute which states that the user must also edit other associated attributes. In such a case select/click on the associated attribute mentioned in the error message and to make the change successful

Step 6 Click **OK**.

You return to the Cisco BTS 10200 Component window. The edited dial plan appears in the list.

To add a single component, see the “[Adding a Component to the Cisco BTS 10200 Configuration](#)” section on page 4-6; to delete a single component, see the “[Deleting a Component From the Cisco BTS 10200 Configuration](#)” section on page 4-11.

To add, edit, or delete multiple components with a single operation, see the “[Bulk Command Provisioning](#)” section on page 4-12.

Deleting a Component From the Cisco BTS 10200 Configuration

To delete a component from the Cisco BTS 10200 configuration, do the following.

- Step 1** Choose the *domain* > **BTS10200s** > the *Cisco BTS 10200 EMS server* from the Domain window.
- Step 2** Click **Config**.
The Cisco BTS 10200 Component Status window opens.
- Step 3** In the Configuration tree, choose **Office Tables** > **Dial_plan**.
The Cisco BTS 10200 Component window shows a list of currently configured dial plans.
- Step 4** In the Component:*name* window, select one or more dial plans to delete.
- Step 5** Click **Delete**.
The Delete component window with the requested deletion appears

REVIEW DRAFT – CISCO CONFIDENTIAL

| Delete component: dial_plan | | OK | Cancel |
|-----------------------------|-------------------------------------|----------|-------------------|
| Clear Form | | | |
| | <input checked="" type="checkbox"/> | | |
| ✓ id | | Dial1 | ? |
| ✓ digit_string | | 222 | ? |
| ✓ noa | | NATIONAL | ? |

120324

**Note**

The first (blank) row with the checked box indicates that the component identified in the banner title was selected for displaying details, editing, or deletion.

Step 6

Click **OK**.

To add a single component, see the [“Adding a Component to the Cisco BTS 10200 Configuration”](#) section on page 4-6; to edit a single component, see the [“Editing a Component in the Cisco BTS 10200 Configuration”](#) section on page 4-9.

To add, edit, or delete multiple components with a single operation, see the [“Bulk Command Provisioning”](#) section on page 4-12.

Bulk Command Provisioning

Cisco EPOM allows you to perform add, delete, and edit commands on multiple components with a single operation. You can only perform bulk provisioning commands on the same type of devices.

For instance, if a group of subscribers use the same media gateway and subscriber profile, you can add or edit these subscribers by using a single command.

Adding Multiple Components

To add multiple components:

-
- Step 1** In the EMS-Server window left pane, click a component.
The Component:*name* window appears.
- Step 2** Click **Add**.


REVIEW DRAFT – CISCO CONFIDENTIAL

The Add component window appears.

Step 3 Select the **Expand range expression** check box.

If you do not select this check box, you get an error message when you enter a range expression.

**Tip**

For information on acceptable range expressions, move your cursor over the  symbol next to the Expand range expression field.

Step 4 In the ID field, enter a range expression in square brackets [].

For example, to add a group of 10 dial plans with the id prefix dp001_new, enter dp001_new[01-10]. Doing so adds dial plans dp001_new01, dp001_new02, through dp001_new10.

Step 5 Enter information in the remaining attribute fields.

Step 6 Click **OK** or **Apply**.

- When you click **OK**, the component is added and the list of components in the Component:*name* window appears.
- When you click **Apply**, the component is added, but you remain in the Add component window for further operations.

You have now added multiple components to the Cisco BTS 10200 EMS network.

REVIEW DRAFT – CISCO CONFIDENTIAL

Editing Multiple Components

To edit multiple components:

-
- Step 1** In the `ems-server` window left pane, click a component.
The `Component:name` window appears.
- Step 2** In the `Component:name` window, select one or more components that you want to edit.
- Step 3** Click **Edit**.
The `Change component` window appears.

Change component: dial_plan
OK Cancel

[Clear Form](#)

| | | | |
|----------------|-------------------------------------|--|-------------------------------------|
| | <input checked="" type="checkbox"/> | | <input checked="" type="checkbox"/> |
| ✓ id | Dial1 <input type="text"/> | | Incoming <input type="text"/> |
| ✓ digit_string | 222 <input type="text"/> | | 271201 <input type="text"/> |
| ✓ noa | NATIONAL <input type="text"/> | | NATIONAL <input type="text"/> |
| del_digits | 0 <input type="text"/> | | 0 <input type="text"/> |
| dest_id | dst1 <input type="text"/> | | local-sub <input type="text"/> |
| max_digits | 10 <input type="text"/> | | 10 <input type="text"/> |
| min_digits | 10 <input type="text"/> | | 10 <input type="text"/> |
| px_digits | <input type="text"/> | | <input type="text"/> |
| split_npa | NONE <input type="text"/> | | NONE <input type="text"/> |

120326

**Note**

The first (blank) row with the checked box indicates that the component in the window title was selected for displaying details, editing, or deletion.

- Step 4** Make the required changes to the attribute fields.
- Step 5** Click **OK**.
You have now edited multiple components in the Cisco BTS 10200 EMS network.
-

Deleting Multiple Components

To delete multiple components:

-
- Step 1** In the `ems-server` window left pane, click a component.
The `Component:name` window appears.
- Step 2** In the `Component:name` window, select one or more components that you want to delete.
- Step 3** Click **Delete**.

REVIEW DRAFT – CISCO CONFIDENTIAL

The Delete component window appears with the requested deletions.

| Delete component: dial_plan | | | |
|-------------------------------------|--------------------------|--------------------------|--------------------------|
| OK Cancel | | | |
| Clear Form | | | |
| <input checked="" type="checkbox"/> | <input type="checkbox"/> | <input type="checkbox"/> | <input type="checkbox"/> |
| ✓ id | Dial1 | Incoming | Incoming |
| ✓ digit_string | 222 | 271201 | 271202 |
| ✓ noa | NATIONAL | NATIONAL | NATIONAL |

**Note**

The first (blank) row with the checked box indicates that this component was selected for displaying details, editing, or deletion.

Step 4

Click **OK**.

You have now deleted multiple components in the Cisco BTS 10200 EMS network.

Checking the Status and Controlling Components

You can check the status of a component and you can control its status. For example, you can change status of a Cisco BTS 10200 EMS server from Normal to Forced Active Standby.

Be careful while changing component states.

Step 1

From the Domain window, navigate to the desired Cisco BTS 10200 EMS server.

Step 2

Click **Config**.

The Cisco BTS 10200 Component Status window opens. The Configuration tree appears in the left navigation pane.

Step 3

Navigate to the desired device and click to select it.

Step 4

In the Status window, click **Control**.

Step 5

From the Component Control window, verify that you have selected the correct component, then select a **target_state**.

Step 6

Select the desired state.

Options depend on the type of component that you selected.

Step 7

Click **OK**.

REVIEW DRAFT – CISCO CONFIDENTIAL