



## CHAPTER 3

# Understanding the Cisco MXE 3000 Client User Interface (CLUI)

---

**Revised: October 10, 2008, OL-16995-01**

This section includes the following topics:

- [User Interface Components, page 3-1](#)
- [Four User Interface Windows, page 3-5](#)
- [Main Menu Reference, page 3-5](#)

## User Interface Components





The Cisco MXE 3000 Client User Interface (CLUI) uses a standard Windows® application interface. This section defines elements commonly used throughout the UI:

- [Window Controls](#)
- [Menu Bars](#)
- [Tabs](#)
- [Subtabs](#)
- [User Input Fields](#)

## Window Controls

Located in the top right corner of each title bar, the controls described in [Table 3-1](#) allow you to maximize, minimize, and close windows.

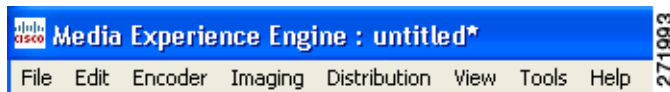
**Table 3-1** Windows Controls

Control	Description
	Closes the window.
	Maximizes the window—available only when the window is not maximized.
	Restores the window to a size set by the user—available only when the window is maximized.
	Minimizes the window.

## Menu Bars

Located below the title bar in each window, the menu bar, shown in [Figure 3-1](#), allows you to access menus relevant to that window. Each menu is described in the [Main Menu Reference](#).

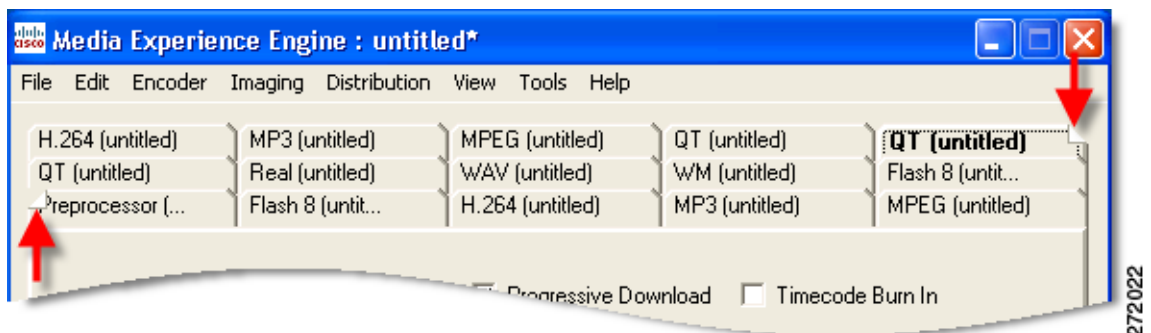
**Figure 3-1** Menu Bar



## Tabs

Each tab in the main window represents a separate function within one job: the source (File Job), a preprocessor, an encoder, and a type of distribution, as shown in [Figure 3-2](#). Tabs display directly below the menu bar. Click a tab to access the user interface for that particular function. Selected tabs are bold.

**Figure 3-2** Tabs



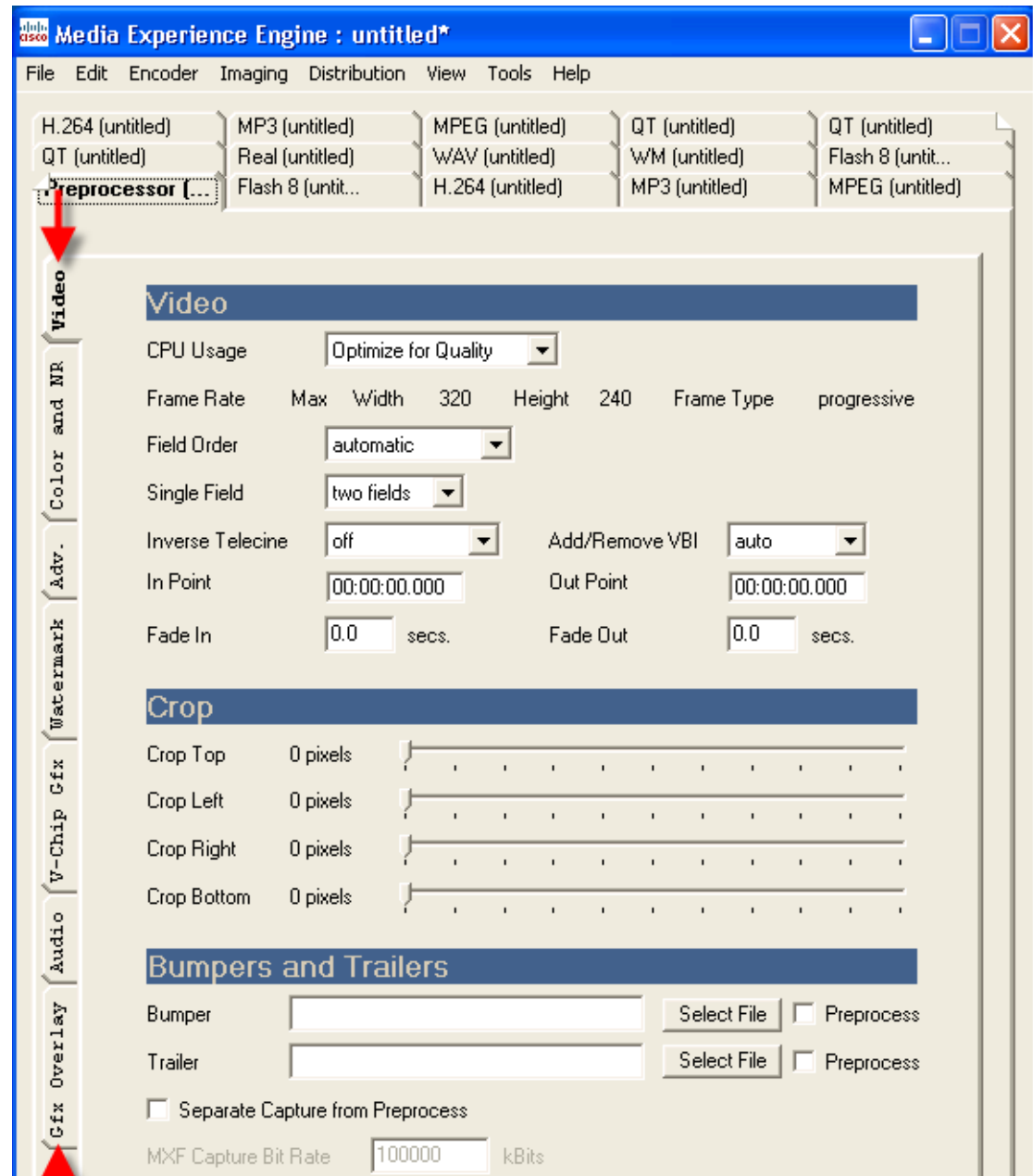
**Note**

If more than fifteen (15) tabs are open, the leading and trailing tabs will display a folded corner. Click the corner to move the display toward the front row or the back row.

## Subtabs

Some tabs are further divided into subtabs. Subtabs are displayed along the left edge of the tab, as shown in Figure 3-3. Click the subtab to bring it to the front. Selected subtabs are bold.

**Figure 3-3 Subtabs**



## User Input Fields

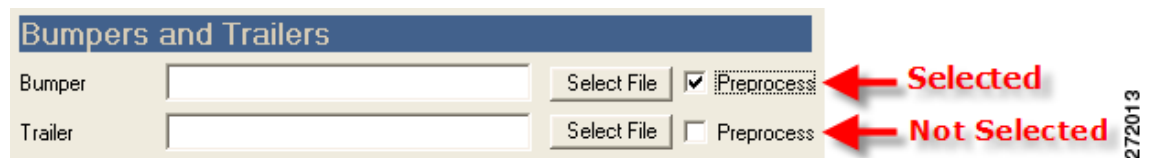
Each window allows you to interact with the application in a variety of ways. Commonly used controls are described, as in the following sections:

- [Checkboxes](#)
- [Drop-Downs](#)
- [Sliders](#)

### Checkboxes

A checkbox turns a setting on or off, as shown in [Figure 3-4](#). Checkboxes may also be used to select one or more values.

**Figure 3-4** Checkboxes

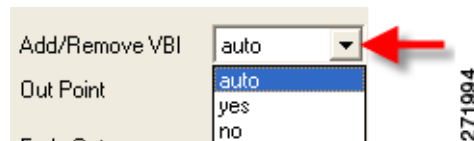


272013

### Drop-Downs

Many of the fields that are limited to specific values use drop-down menus to allow you to select from the list of valid choices. Drop-downs, shown in [Figure 3-5](#), are identified by the down arrow at the end of the field.

**Figure 3-5** Drop-down



271994

### Sliders

Settings that allow a range of values may be set using sliders, shown in [Figure 3-6](#). Each slider has an indicator to mark the set value and also shows the value as a number between the label and the slider.

Slider values can be set by dragging the indicator to the desired value.

**Figure 3-6** Slider



271984

## Four User Interface Windows

The Cisco MXE 3000 provides the following four separate windows that allow you to manage all aspects of job creation, preprocessing, presubmission jobs, and submitted jobs:

- Main Window—See also: [Main Menu Reference](#).
- Preview Window—See also: [Working With Jobs in the Preview Window](#).
- Job Log Window—See also: [Job Log Window: Managing Jobs Before Submission](#).
- Job Status Window—See also: [Job Status Window: Managing Submitted Jobs](#).

## Main Menu Reference

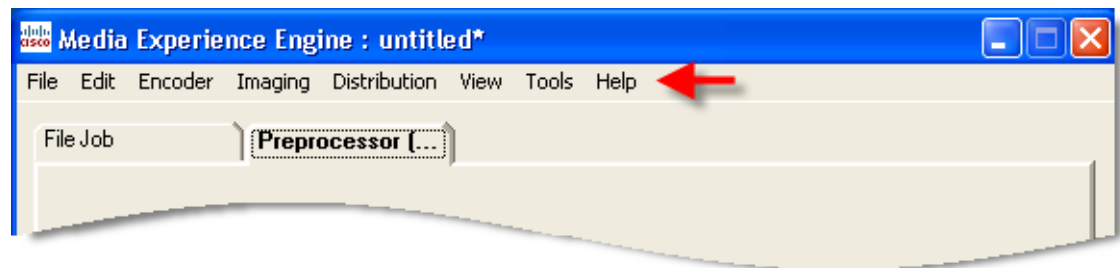
This section describes the following menus and their options:

- [Main Menu](#)
- [File Menu](#)
- [Edit Menu](#)
- [Encoder Menu](#)
- [Imaging Menu](#)
- [Distribution Menu](#)
- [View Menu](#)
- [Tools Menu](#)
- [Help Menu](#)

## Main Menu

The main menu, shown in [Figure 3-7](#), is the primary work area. It is used to create job profiles and submit jobs.

**Figure 3-7** Main Menu



271975

## File Menu

The File menu is accessed from the main menu bar and offers the options described in [Table 3-2](#).

**Table 3-2** File Menu Options and Descriptions

Option	Description
New Job Profile	Choose this option to create a new Job Profile. If an existing Job Profile is open, the prompts the user to save the current profile before creating the new Job Profile.
Open Job Profile	Choose this option to locate and open an existing Job Profile.
Save Job Profile	Choose this option to save the current Job Profile. If the profile has not been previously saved, the Cisco MXE 3000 prompts the user to provide a file name.
Save Job Profile As	Choose this option to save a new copy of the open Job Profile. The Cisco MXE 3000 prompts the user to supply a file name.
Close Job Profile	Choose this option to close the open Job Profile. If changes to the Job Profile have not been saved, the Cisco MXE 3000 prompts the user to choose whether or not the Job Profile will be saved before it is closed.
Import Job Profile	Choose this option to import a saved Job Profile (.awp), along with all of its components, into the current open job.
Import Profile Component	Choose this option to import a saved, incomplete Job Profile.
Set Profile Directory	Choose this option to display the current default profile directory or to browse to a new one.
Close Window	Choose this option to close the main window. If an unsaved profile is open, the Cisco MXE 3000 prompts the user to save changes.
Exit	Choose this option to exit the Cisco MXE 3000 Client User Interface. If an unsaved profile is open, the Cisco MXE 3000 prompts the user to save changes.

## Edit Menu

The Edit menu is accessed from the main menu or by right-clicking any tab. Menu options that do not apply to the chosen tab are grayed out. The Edit menu offers the options in [Table 3-3](#) that are used to add, remove, or make changes to the profile.

**Table 3-3** Edit Menu Options and Descriptions

Option	Description
Remove Tab	Choose this option to delete the selected tab from the Job Profile.
Change Tab Name	Choose this option to assign a name to a tab.
Change Encoder User Data	Choose this option to define what appears in the <user-data> field of the task XML. See also: <a href="#">Changing Encoder User Data</a> .
Reset Tab	Choose this option to reset tab values to the last saved settings. On the File Job tab, this option will reset values to their defaults.

**Table 3-3 Edit Menu Options and Descriptions (continued)**

Export Profile Element	Choose this option to save a single tab of a Job Profile. The Export Profile Element option applies only to a Preprocessor tab or an Encoder tab.
View XML	Choose this option to display the XML for the currently selected tab. This option applies to all tabs except File Job.
Disable Tab	Choose this option to temporarily omit a tab without deleting it from the Job Profile.
Audio Only	Choose this option to limit the encoder to creating Audio Only files.
Video Only	Choose this option to limit the encoder to creating Video Only files.
Fast Start	<p>Choose this option to use Fast Start encoding for the selected encoder. Fast Start reduces the total time required to process a job by starting the encoding process as soon as enough of the image has been preprocessed, rather than waiting for the preprocessing to be complete. Customers typically use this feature when submitting large jobs.</p> <p>Because Fast Start encoding utilizes available computer processing cycles, the Cisco MXE 3000 will use Fast Start encoding only under the following circumstances:</p> <ul style="list-style-type: none"> <li>• If at most one other clip is currently encoding</li> <li>• If bumpers and trailers are not specified on the Preprocessor tab.</li> </ul>
Immediate	Choose this option to use Immediate (typically faster than Fast Start) encoding for the selected encoder. Immediate encoding removes the intermediate .avi file, forcing the encoder to read directly from the memory-mapped interface (MMI) (similar to a cache).
Archive	Choose this option to bypass the preprocessor settings and only read the input file, passing the video directly through to the encoder. Currently this feature is only enabled on the MPEG encoder.
Rewrap	<p>Choose this option to rewrap RAW data in the new encoder's header. By choosing this option, the Cisco MXE 3000 does not decompress and recompress the video, resulting in faster job processing.</p> <p><b>Note</b> Rewrap works only if the video input and output formats are completely compatible. (The RAW encoded form of audio and video data is often called essence).</p>
Audio Tracks	Choose this option to map up to eight tracks of audio from the source to the Cisco MXE 3000 output.
Timecode	<p>Choose this option to apply a timecode to the selected encoder's output.</p> <p><b>Note</b> Not all encoders support timecodes.</p>
Duplicate Tab	Choose this option to insert, into the Job Profile, a new encoder tab that is the same type and contains the same settings as the encoder tab currently selected.

## Changing Encoder User Data

Choose this option to define what appears in the <user-data> field of the task XML:

- To apply <user-data> to Encoder or Thumbnail file naming:
  1. From the main window, select (or add) an Encoder or Thumbnails tab.
  2. Select **Edit > Change Encoder User Data**. The Change Encoder User Data pop-up displays.
  3. Enter a Target Name, and click **OK**. The data entered here becomes the \$(user-data) value.
- To apply <user-data> to Output file naming:
  1. Select the (or add an) Output tab.
  2. Check the **Output Name Enabled** box, and enter an Output File Name, including the \$(user-data) field, in the \$(basename).\$(profile).\$(subprofile).\$(extension) format.
- To apply <user-data> to Delivery file naming:
  1. Select the (or add a) Delivery tab.
  2. Check the **Rename Output** box, and enter an Output Filename, including the \$(user-data) field, in the \$(basename).\$(profile).\$(subprofile).\$(extension) format.
- To apply <user-data> to Delivery file Location or Directory:
  1. Select the (or add a) Delivery tab.
  2. In the Delivery Method section, check the **Copy** box, as shown in [Figure 3-8](#), and enter a Location.

or

  1. Check the **FTP** box, and enter a Directory.

**Figure 3-8** Add User Data to Delivery Location and FTP Directory

## Encoder Menu

The Encoder menu is accessed from the main menu and is used to add encoder tabs to Job Profiles.

Encoder tabs are used to set parameters specific to a desired output. For example, a file that is intended for users of Microsoft Windows Media Player who connect to the Internet using cable modems will have one set of requirements, while a file intended for users of RealPlayer who connect to the Internet using a T1 connection will have a different set of requirements. Encoder tabs govern how preprocessor output will be compressed for distribution. See also: [Adding Encoders to a Job Profile \(CLUI\)](#).

The standard functions of each encoder are displayed on its respective tab. The settings included on each encoder tab are specific to the encoder chosen.

## Imaging Menu

The Imaging menu, described in [Table 3-4](#), is accessed from the main menu and is used to add imaging tabs to jobs or Job Profiles.

**Table 3-4** *Imaging Options and Descriptions*

Option	Description
<a href="#">Indexing</a>	Choose this option to define parameters that specify how to perform scene change detection and format, size, and quality of the thumbnail image(s).
<a href="#">Thumbnails</a>	Choose this option to define thumbnail generation frequency and thumbnail image format.

## Indexing

This section includes the following topics:

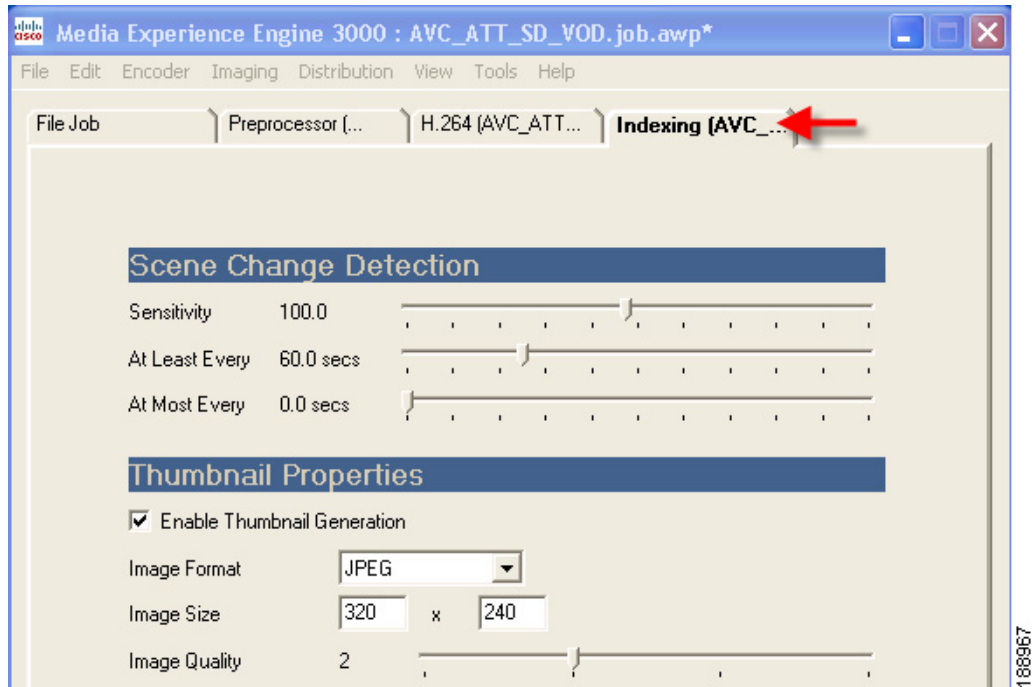
- [Introduction to the Indexing Tab, page 3-9](#)
- [Understanding Indexing Settings, page 3-10](#)
- [Adding an Indexing Tab to a Profile, page 3-11](#)

### Introduction to the Indexing Tab

Indexing tabs, shown in [Figure 9](#), are added to a job or a job profile from the main menu, by selecting **Imaging > Add Indexing**. Adding indexing settings to a job or Job Profile is optional.

The Indexing tab is used to define parameters that specify how to perform scene change detection, whether to capture thumbnail images as representative samples of the scene changes, as well as the format, size, and quality of the thumbnail image(s). See also: [Introduction to the Thumbnails Tab](#).

See also: [Understanding Indexing Settings](#) for a description of each of the settings.

**Figure 9** *Indexing Tab*

## Understanding Indexing Settings

The Indexing tab is made up of the following two sections:

- [Scene Change Detection, page 3-10](#)
- [Thumbnail Properties, page 3-11](#)

### Scene Change Detection

[Figure 10](#) shows the Scene Change Detection section.

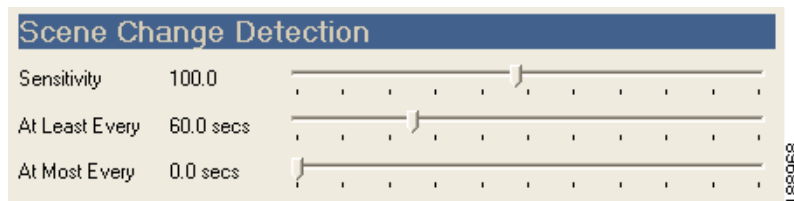
**Figure 10** *Indexing Tab: Scene Change Detection Section*

Table 5 describes the settings.

**Table 5** Scene Change Detection Settings and Descriptions

Setting	Description
Sensitivity	This slider controls the sensitivity to changes in the video program that will cause a scene change to be declared. A higher sensitivity setting will generate more scene changes; a lower sensitivity setting will generate fewer scene changes. Acceptable values range from 10 to 200, with 100 as the default. By clicking on the sensitivity number, higher sensitivities (up to 1000) can be entered manually.
At Least Every	Specifies a maximum time interval, in seconds, between scene changes. If a scene change is detected before the end of this interval, the time is reset. The default value is 60 seconds and can be reset using the slider. By clicking on the displayed value, you may enter specific periods (1.0 to 72000.0 seconds) manually.
At Most Every	Specifies a minimum time interval, in seconds, between scene changes. If a scene change is detected before the end of this interval, the time is reset. Until the period, measured from the time of the last scene-change expires, no new scene change will be declared. This period is zero by default, meaning that there is no limit to how quickly scene changes can be declared (every frame). By clicking on the displayed value, specific periods can be entered manually.  <b>Note</b> The At Most Every value must be less than or equal to the At Least Every value.

### Thumbnail Properties

Figure 11 shows the Thumbnail Properties section.

**Figure 11** Indexing Tab: Thumbnail Properties Section



See also: [Understanding Thumbnail Settings](#) for a description of each field.

### Adding an Indexing Tab to a Profile

#### Procedure

- Step 1** From the main menu, click **File** and **New Job Profile** or **Open Job Profile**.
- Step 2** From the main menu, click **Imaging > Add Indexing**. An Indexing tab is added to the job.
- Step 3** Complete the Scene Change Detection and Thumbnail Properties sections. See also: [Understanding Indexing Settings](#) and [Understanding Thumbnail Settings](#).
- Step 4** Click **File > Save Job Profile** to save changes.

## Thumbnails

This section includes the following topics:

- [Introduction to the Thumbnails Tab, page 3-12](#)
- [Understanding Thumbnail Settings, page 3-12](#)
- [Adding a Thumbnails Tab to a Job Profile, page 3-14](#)

### Introduction to the Thumbnails Tab

Thumbnail tabs are added to a job or a Job Profile from the main menu, by selecting **Distribution > Add Thumbnails**. Adding thumbnails to a job or Job Profile is optional.

Use this tab to set up the creation of thumbnail images, specify their format, and specify the conditions for capturing them. Thumbnails are basically images from single frames of the video. Despite the name, you may set the images to any size. The Thumbnails tab also allows you to set up periodic thumbnail captures.

Thumbnails are placed in a subfolder of the Thumbnail Output Directory. All the thumbnails from one encoding job will be held in a subfolder. The subfolder is named according to the Cisco MXE 3000 naming conventions for output files. For example, if the output name is \$(basename).\$(profile).\$(subprofile).\$(extension), the thumbnail subfolder will be named \$(basename)\_\$(profile)\_\$(subprofile)\_tmb with the periods converted to “\_” and the \$(extension) converted to “\_tmb”.

The subfolder will contain a text file with an .index extension that contains a list of the thumbnail files and times (measured from the beginning of the video clip) where the thumbnails were captured.

The thumbnail files themselves are named 0000.ext, 0001.ext, 0002.ext, ... etc, where “ext” is one of the allowed graphics formats. See also: Image Format in [Table 3-7](#).

You may change the thumbnail naming convention with a Windows environment variable: set OLD\_THUMBNAIL\_NAMING\_CONVENTION=1

The OLD convention uses the Cisco MXE 3000 naming convention to name each thumbnail file. So, the example above produces a thumbnail named: \$(basename)\_\$(profile)\_\$(subprofile)0000.ext instead of 0000.ext.

There are three checkboxes you may use to specify different methods of determining times to capture thumbnail images. You may check more than one box. The Cisco MXE 3000 uses all checked methods; the times satisfying any of the checked methods generate a thumbnail image. If no boxes are checked, no thumbnails are generated.

See also: [Understanding Thumbnail Settings](#).

### Understanding Thumbnail Settings

The Thumbnails tab is used to define parameters that specify when to capture thumbnail images, as well as the format, size, and quality of the thumbnail image(s). The Thumbnails tab is made up of two sections:

- [Frame Selection](#)
- [Thumbnail Properties](#)

#### Frame Selection

[Figure 3-12](#) shows the Frame Selection area.

**Figure 3-12** Frame Selection

**Frame Selection**

Generate a Thumbnail Every  secs

Generate a Total of  thumbnails

Generate a Single Thumbnail

272051

Table 3-6 describes the settings.

**Table 3-6** Frame Selection Settings and Descriptions

Setting	Description
Generate a Thumbnail Every	Check this box to capture thumbnails within the period entered in the adjacent field. The default period is 10 seconds, meaning that every ten seconds an image is captured. The number of images captured depend on the length of the video clip, and will be approximately (Clip Length)/(Thumbnail Period).
secs	When the Generate a Thumbnail Every box is checked, the time in the secs box determines the spacing between captured images. If the time of a requested thumbnail does not match the time of any video frame, the nearest frame is selected. The time must be greater than zero.
Generate a Total of	Check this box to enable the capture of a fixed number of thumbnails per clip. The fixed number is identified in the adjacent thumbnails field. You may use any number except zero. The spacing between thumbnails depends on the length of the video clip, and will be approximately (Clip Length)/(Number of Thumbnails).
thumbnails	When the Generate a Total of box is checked, the number in this box determines the number of thumbnails to be generated during the video clip. The thumbnails are equally spaced across the clip (except for irregularities caused by rounding to the nearest video frame). This may not represent the total number of thumbnails captured if other checkboxes enable other methods of requesting thumbnails. The number must be greater than zero.
Generate a Single Thumbnail	This checkbox enables the capture of a single thumbnail image. Check this box to capture a thumbnail at the time specified by the Thumbnail Time box on the File Job tab. These submission parameters are intended to be set on a per-submission basis, and are not saved in the profiles.

### Thumbnail Properties

Figure 3-13 shows the Thumbnail Properties area.

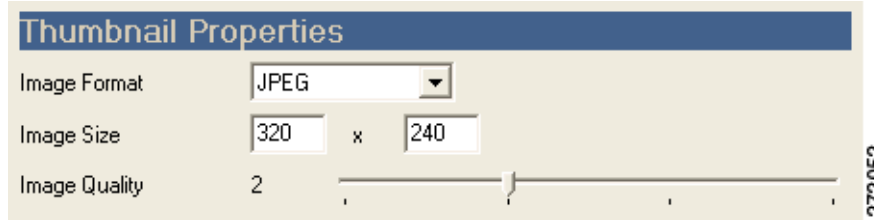
**Figure 3-13 Thumbnail Properties**

Table 3-7 describes the settings.

**Table 3-7 Thumbnail Properties Settings and Descriptions**

Setting	Description
Image Format	Choose a graphic format for the thumbnail images from the drop-down. Supported formats are: JPEG, PNG, BMP, TGA, TIFF.
Image Size	<p>These boxes determine the size of the thumbnail images.</p> <p>The first box specifies the thumbnail width, and the second box specifies the thumbnail height. By default, the setting is 320x240. The entire image from the video is resized to fit the set thumbnail dimensions. The images are taken after preprocessing, so any cropping or color corrections applied in the preprocessor will be evident in the thumbnails.</p> <p>The images may be stretched or compressed horizontally to fit the requested thumbnail dimensions. There is no cropping to make the thumbnails. The graphics formats of the thumbnails assume square pixels, whereas video may not. So, for example, an NTSC video sized 720x480 output with a pixel aspect ratio of 0.9 should be considered a 4:3 image aspect ratio, resulting in a thumbnail with dimensions 160x120.</p> <p>Thumbnails have a minimum size of 80x60 pixels.</p>
Image Quality	<p>Sets the image quality for JPEG thumbnails only.</p> <p>The slider allows four quality settings, labeled 1,2,3,4. The higher numbers correspond to higher image quality and require larger file sizes for the thumbnails.</p>

## Adding a Thumbnails Tab to a Job Profile

### Procedure

- 
- Step 1** Click **File > New Job Profile** or **Open Job Profile**.
  - Step 2** From the main menu, click **Distribution > Add Thumbnails**. A Thumbnails tab is added to the job.
  - Step 3** Complete the Frame Selection and Thumbnail Properties sections. See also: [Understanding Thumbnail Settings](#).
  - Step 4** Click **File > Save Job Profile** to save changes.
-

## Distribution Menu

The Distribution menu is accessed from the main menu and is used to add distribution tabs to jobs or Job Profiles.

For more information and instructions, see the reference in the Option column of [Table 3-8](#).

**Table 3-8** *Distribution Options and Descriptions*

Option	Description
<a href="#">Add Delivery</a>	Choose this option to copy files to additional locations on the local network or to deliver files to remote servers using FTP.
<a href="#">Add Notification</a>	Choose this option to send e-mail and HTTP post messages regarding job status.
<a href="#">Add Output</a>	Choose this option to specify which file types are maintained locally once encoding is complete.

## View Menu

The View menu is accessed from the main menu. The View menu is consistent and available across all Cisco MXE 3000 Client User Interface windows and allows users to view any CLUI window. The currently viewed window is grayed out.

By default, when you open the Client User Interface, the Main Window displays.

Choose **View > Preview Window, Job Status Window, and/or Job Log Window** to also display these windows.

See also: [Four User Interface Windows](#).

## Tools Menu

The Tools menu is accessed from the main menu and is used for the options described in [Table 3-9](#).

**Table 3-9** *Tool Menu Options and Descriptions*

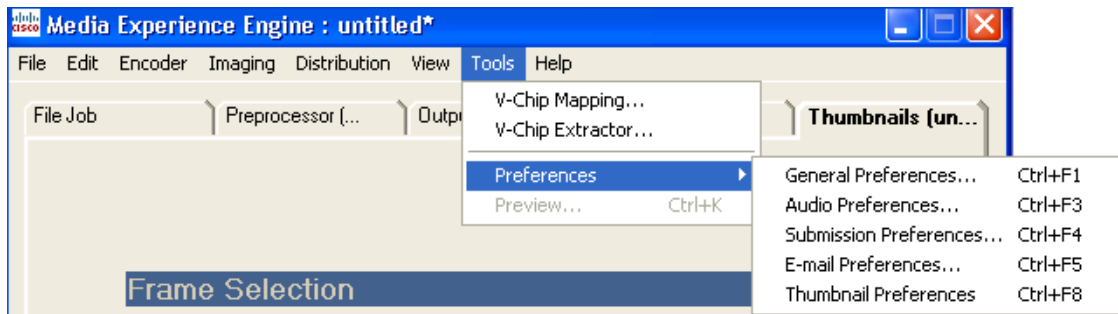
Option	Description
V-Chip Mapping	This feature allows you to associate V-chip ratings with watermark graphic files. When enabled, the preprocessor will automatically use the mapping file configured watermark for the submitted V-chip rating value, allowing different mapping files for different versions of the V-chip watermark graphics.
V-Chip Extractor	This feature extracts the V-chip rating from a CableLabs-compliant MPEG clip if it contains a rating.

**Table 3-9** *Tool Menu Options and Descriptions (continued)*

Preferences	Choose this option to configure various User Interface settings. See also: <a href="#">Setting Preferences</a> .
Preview	Choose this option to open the video clip and profile displayed in the main window in the Preview window. The Preview window allows users to see how preprocessor settings will affect the video and to make other adjustments to the job.

## Setting Preferences

The Preferences submenu, shown in [Figure 3-14](#), is accessed from the Tools menu and is used to set various defaults as described in [Table 3-10](#). Setting preferences is optional. Users have the option of overriding any default at the time of job submission.

**Figure 3-14** *Setting Preferences*

Choose any of the preferences from the above list to display the Preferences window.

For more information and instructions, see the reference in the Option column of [Table 3-10](#).

**Table 3-10** *Preferences Submenu Options and Descriptions*

Option	Description
<a href="#">General Preferences</a>	Choose this option to: <ul style="list-style-type: none"> <li>• Set the default profile storage location</li> <li>• Define the server name</li> <li>• Set the default output file structure names</li> <li>• Determine which types of output files will be saved by default</li> </ul>
<a href="#">Audio Preferences</a>	Choose this option to set default parameters for the mixer and audio lines used for encoding.
<a href="#">Submission Defaults</a>	Choose this option to define the default values for author and copyright metadata.
<a href="#">E-mail Preferences</a>	Choose this option to record identification information that can be used in sending and receiving notification messages regarding job status.
<a href="#">Thumbnail Preferences</a>	Choose this option to set thumbnail creation defaults, including image format, size, and quality.

## General Preferences

The General tab, shown in [Figure 3-15](#), is accessed from the main menu by selecting **Tools > Preferences > General Preferences**.

**Figure 3-15** General Preferences Tab

[Table 3-11](#) describes the settings.

**Table 3-11** General Preferences Settings and Descriptions

Setting	Description
Profiles Location	<p>This option allows you to set the default profile storage location. Each Cisco MXE 3000 can save profiles to a unique directory, or the profiles can be saved to a common network location. We recommend that network profile directories follow the default profile location format, which is:</p> <p>C:\Program Files\Cisco\Media Experience Engine\Profiles</p> <p><b>Note</b> Use NT security settings to limit how each user interacts with the profiles in that location.</p>

**Table 3-11** General Preferences Settings and Descriptions (continued)

Server List	This option allows you to identify the server(s) where jobs will be directed when submitted from the Job Log. Separate server names with a comma. Typically, the server name is set during the original Cisco MXE 3000 installation. This value can be changed in the Job Status window > Tools > Change Server to connect to a different server.
Default Output Name	This option allows you to define a default pattern for output file names. See also: <a href="#">Variables Used for File and Directory Naming</a> for a complete list of variables used in defining output file names.
Default Video Format	This option allows you to set the default video format to NTSC or PAL.
Keep Output Files Defaults	This option allows you to define which type of output files will be saved locally after submitted jobs have completed. Local files that are not identified in this section will be deleted once the job has completed.  <b>Note</b> By default, preprocessor files are not saved because of the size of uncompressed AVI files.

## Audio Preferences

The Audio tab, shown in [Figure 3-16](#), is accessed from the main menu by selecting **Tools > Preferences > Audio Preferences** and is used to set audio mixer preferences (or defaults).

Figure 3-16 Audio Preferences Tab

Table 3-12 describes the settings.

Table 3-12 Audio Preferences Settings and Descriptions

Setting	Description
Select a Mixer . . .	Choose this option to identify which of the installed mixers the Cisco MXE 3000 will use.
Specify the path . . .	Choose this option to define the full path of the mixer software.
Capture at	These settings do not apply to Cisco MXE 3000 Release 2.0.
Audio Drift Compensation	These settings do not apply to Cisco MXE 3000 Release 2.0.

### Submission Defaults

The Submission Defaults tab, shown in Figure 3-17, is accessed from the main menu by selecting **Tools > Preferences > Submission Preferences**.

Entry of data into the fields is optional. The Cisco MXE 3000 uses the data to auto-populate fields in the corresponding File Job Metadata sections. See also: [Understanding File Job Settings](#).

**Figure 3-17** Corresponding File Job Metadata Section

**Metadata**

Title

Description

Keywords

Author

Copyright

Rating

271992

The following defaults are set on the **Submission Defaults** tab and will auto-populate on the File Job tab, shown in [Figure 3-18](#).

**Figure 3-18** Submission Defaults Tab

**Submission Defaults**

Default Metadata

Default Title

Default Description

Default Keywords

Default Author

Default Copyright

Default Audience Rating

Default Profile

Default Profile

272003

Table 3-13 describes the settings.

**Table 3-13** Submission Default Settings and Descriptions

Setting	Description
Default Metadata	<ul style="list-style-type: none"> <li>• Default Title</li> <li>• Default Description</li> <li>• Default Keywords</li> <li>• Default Author</li> <li>• Default Copyright</li> <li>• Default Audience Rating</li> </ul>
Default Profile	Enter data in the this field to have the Cisco MXE 3000 automatically choose that profile for every job logged.

## E-mail Preferences

The E-mail tab, shown in Figure 3-19, is accessed from the main menu by selecting **Tools > Preferences > E-mail Preferences**. At this time, the E-mail tab is used to enter information that appears in the job submission metadata only.

**Figure 3-19** E-mail Preferences Tab

The screenshot shows a web interface for 'E-mail Preferences'. The main container is a light beige box with a tab labeled 'E-mail' in the top right corner. Inside this container is a smaller box titled 'E-Mail Settings' which contains four text input fields, each with a label to its left: 'Name', 'Organization', 'E-mail address', and 'Reply address'. The input fields are empty. In the bottom right corner of the main container, the number '271946' is displayed vertically.

## Thumbnail Preferences

The Thumbnails tab, shown in [Figure 3-20](#), is accessed from the main menu by selecting **Tools > Preferences > Thumbnail Preferences** and is used to specify defaults for the location, naming, and imaging of encoded video thumbnails.

**Figure 3-20** Thumbnail Preferences Tab

The screenshot shows the 'Thumbnails' tab with the following settings:

- Manual Thumbnail Directory: c:\Media
- Output Name: (empty)
- Image Format: JPEG
- Image Size: 160 x 120
- Image Quality: (slider)

[Table 3-14](#) describes the settings.

**Table 3-14** Thumbnail Preferences Settings and Descriptions

Setting	Descriptions
Manual Thumbnail Directory	Choose this option to specify the directory where generated thumbnails will be stored. Click the browse button (...) to the right of the text entry box to locate the appropriate file system and path.

**Table 3-14 Thumbnail Preferences Settings and Descriptions (continued)**

Output Name	<p>Choose this option to specify the name of the thumbnail image. The Output Name field supports four substitution variables:</p> <ul style="list-style-type: none"> <li>• \$(framenum): Inserts the frame number in the source video that corresponds to the selected thumbnail image.</li> <li>• \$(clipname): Inserts the name of the source video clip.</li> <li>• \$(date): Inserts the current date in a <i>yyyymmdd</i> format.</li> <li>• \$(time): Inserts the current time in 24-hour format: <i>hhmmss</i>.</li> </ul>
Image Format	<p>Choose this option to specify the thumbnail image's format. The system default is JPEG.</p>
Image Size	<p>Choose this option to specify the thumbnail image size in pixels.</p> <ul style="list-style-type: none"> <li>• Width: Values range from 80 to 352. The system default is 320.</li> <li>• Height: Values range from 60 to 288. The system default is 240.</li> </ul>
Image Quality	<p>Choose this option to specify the default JPEG thumbnail image quality. Lower numbers provide more compression (smaller file sizes) while higher numbers provide better image quality (larger file sizes).</p> <p><b>Note</b> The Image Quality slider bar only adjusts JPEG images.</p>

## Help Menu

The Help menu is accessed from the main menu and is used to:

- Search the Cisco MXE 3000 Help files
- Provide access to the PDF version of the User Guide for Cisco Media Experience Engine 3000
- Obtain more information about the Cisco MXE 3000

