



INTEGRATION NOTE



Installing and Configuring the Cisco Unified Videoconferencing Desktop Connector Plug-In Release 7.1 with IBM Lotus Sametime

- [1 Preparing for Installation](#)
- [2 Installing and Configuring the Cisco Unified Videoconferencing Desktop Connector Plug-In Release 7.1 with IBM Lotus Sametime Connect](#)
- [3 Integrating Cisco Unified Videoconferencing Connector for Lotus Sametime Web Conferencing into the Sametime Deployment](#)
- [4 Obtaining Documentation and Submitting a Service Request](#)

1 Preparing for Installation

This document provides installation information for administrators and users of Cisco Unified Videoconferencing Connector. Prior to installing Cisco Unified Videoconferencing Connector, verify that these conditions are fulfilled:

- IBM Lotus Sametime is configured with Working Sametime installation.
- Cisco Unified Videoconferencing Desktop Server is installed and configured.
- Desktop product CD-ROM is available.

2 Installing and Configuring the Cisco Unified Videoconferencing Desktop Connector Plug-In Release 7.1 with IBM Lotus Sametime Connect

This section describes how administrators can automatically deploy the Cisco Unified Videoconferencing Connector plug-in throughout a network, and how end users can manually install the plug-in on a Sametime Connect client.

- [Update Sites, page 2](#)
- [Installing the Cisco Unified Videoconferencing Connector Update Site from the CD-ROM, page 2](#)
- [How to Install the Cisco Unified Videoconferencing Connector from an Update Site, page 3](#)
- [Distribution Methods for the Cisco Unified Videoconferencing Connector, page 6](#)

Update Sites

An update site is a specific directory layout with an XML file that specifies all the available plug-ins. The method of how the update site is presented to the client can vary (for example, as a web site or through the local file system).

If Desktop is detected when installing Cisco Unified Videoconferencing Connector, an Eclipse update site is created for you in the Desktop installation directory at `<installdir>/Tomcat/webapps/ROOT/sametime`. You can use the update site at this location, or you can copy the files from the update site to a location of your choice.

An update site is a specific directory layout with an XML file that specifies all the available plug-ins. You can variously present the update site to the client; for example, as a web site or using the local file system.

If Desktop is detected when installing Cisco Unified Videoconferencing Connector, an Eclipse update site is created for you in the Desktop installation directory at `<installdir>/Tomcat/webapps/ROOT/sametime`.

We recommend using the installer to create the update site. The update site is usually set up on the same server as Desktop.

If you already have plug-ins that you automatically push using an update site, you need to merge the Cisco Unified Videoconferencing Connector `site.xml` file with the existing `site.xml` file, and copy the contents of the Cisco Unified Videoconferencing Connector features and plug-ins folders into the existing corresponding folders.

Installing the Cisco Unified Videoconferencing Connector Update Site from the CD-ROM

Install the Cisco Unified Videoconferencing Connector update site from the Desktop CD-ROM.

Procedure

-
- Step 1** Insert the CD-ROM.
 - Step 2** Wait for the autorun menu screen to display.
 - Step 3** Select Cisco Unified Videoconferencing Connector for IBM Lotus Sametime.
 - Step 4** Select Install Update Site.

- Step 5** Select the setup.exe file and follow the on-screen instructions.
The **Choose Installation Location** screen detects if Desktop is installed.
If Desktop is detected, the installer attempts to create an update site at
<installdir>/Tomcat/webapps/ROOT/sametime
The default update site URL is http://<server>/sametime.
Where <server> stands for either the IP address or FQDN of the server on which you install the Cisco Unified Videoconferencing Connector.
Alternatively, you can configure the installer to create an update site at a different location.
- Step 6** If Desktop is not detected, define the location at which you want the installer to place the files needed for an update site.
- Step 7** By default, the installer places the files at
\\Program Files\Cisco\ Connector for IBM Lotus Sametime
You must either place the files needed for an update site under a Sametime update site, or distribute them manually.
-

How to Install the Cisco Unified Videoconferencing Connector from an Update Site

You can install Cisco Unified Videoconferencing Connector either automatically or manually.

- [How to Automatically Deploy the Cisco Unified Videoconferencing Connector, page 3](#)
- [Manually Installing the Cisco Unified Videoconferencing Connector from an Update Site, page 5](#)

How to Automatically Deploy the Cisco Unified Videoconferencing Connector

- [Installing the Cisco Unified Videoconferencing Connector using the Community Client Document, page 3](#)
- [Installing the Plug-in Using the preferences.ini File, page 4](#)

Installing the Cisco Unified Videoconferencing Connector using the Community Client Document

This section describes how you can automatically deploy the Cisco Unified Videoconferencing Connector plug-in using the Sametime server Community Client Document.

Procedure

- Step 1** Access the Sametime Server.
- Step 2** Double-click the **Domino Admin** icon on the desktop.
- Step 3** Sign in using administrator credentials.
- Step 4** Select the **Domain** tab.
- Step 5** Select the **Files** tab.
- Step 6** Double-click the Sametime Configuration (stconfig.nsf) document.
- Step 7** Select **By Form**.
- Step 8** Right-click and select **Edit CommunityClient** document.
- Step 9** Locate the UIM Provisioning field.
- Step 10** Edit the URL in the field by adding the full path to your update site (including http://). For example, http://<server name or IP>/sametime.
- Step 11** Copy this URL to the Sametime update site URL field in the Policy which applies to the users:
- a. Using the web-based server administrator (http://<sametime server>/stcenter.nsf) sign in as the administrator.
 - b. Where <server> stands for either the IP address or FQDN of the Sametime Server.
 - c. Select the **Administer the server** link.

- d. Select the **Policies** link.
- e. Select the **Sametime Default Policy** link.
- f. Scroll down to the Instant Messaging section.
- g. Modify the Sametime update site URL with local update site on the Sametime server.
- h. Check the **Override all policies** check box to immediately push the new configuration to clients.
- i. Select **OK** to save your changes.
- j. Use another web page and run the Domino Server Administrator (<http://<server>/webadmin.nsf>).
- k. Sign in and select the **Server** tab at the top of the page.
- l. Select **Tools > Server > Restart** to restart your Sametime server.

The next time a user signs in to the Sametime Connect client, the plug-in is downloaded and the user is prompted to restart the Sametime client.

Step 12 Save and close the stconfig.nsf file.

Installing the Plug-in Using the preferences.ini File

This section describes how you can automatically deploy the Cisco Unified Videoconferencing Connector plug-in using the Sametime Connect preferences.ini configuration file.

The preferences.ini file is located by default at the following locations on the Sametime Connect client:

- Sametime 7.5.x
C:\Program Files\ibm\Sametime Connect\plugins\
com.ibm.collaboration.realtime.update_1.0.0
- Sametime 8.0
C:\Program Files\IBM\Lotus\Sametime Connect\shared\
eclipse\plugins\com.ibm.collaboration.realtime.update_8.0.0.20071119-1552

Procedure

Step 1 Access the Cisco Unified Videoconferencing Desktop Server.

Step 2 Verify that an update site is created. See [How to Install the Cisco Unified Videoconferencing Connector from an Update Site, page 3](#) for an explanation of update sites.

Step 3 Open the preferences.ini file.

Step 4 Enter your update site URL as the value for the *adminUpdatePolicyURL* parameter. Use the format
adminUpdatePolicyURL=http://server.domain.com/sametime/site.xml

Step 5 Save and close the preferences.ini file.

The next time the user signs in to the Sametime Connect client, the client searches for the update site URL in the *URL for UIM Provisioning* parameter of the stconfig.nsf file on the Sametime server.

If the client fails to find the URL, the client searches for the value of the *adminUpdatePolicyURL* parameter of the preferences.ini file.

When the client finds this value, the plug-in is downloaded and the user is prompted to restart the Sametime client.

Manually Installing the Cisco Unified Videoconferencing Connector from an Update Site

This section describes how Sametime users can manually install the Cisco Unified Videoconferencing Connector plug-in on a Sametime Connect client.

The Cisco Unified Videoconferencing Connector plug-in is available for download from an update site. For more information, see [How to Install the Cisco Unified Videoconferencing Connector from an Update Site, page 3](#).



Note Sametime Administrators may prevent users from performing manual downloads. For more information, see [Preventing Manual Downloading, page 6](#).

Procedure

- Step 1** In the Sametime Connect client user interface, choose
- (for Sametime 7.5 CF1) **File > Manage Updates > Download Plugins**
 - (for Sametime 7.5.1 and 8.0) **Tools > Plug-ins > Install plug-ins**.
- Step 2** If you have a previous version of the plug-in already installed, the installer prompts you to search for updates to the currently installed features. In the Feature Updates window, choose **Search for updates of the currently installed features**, and then go to Step 9.
- Step 3** If you do not have a previous version of the plug-in installed, in the Feature Updates window choose **Search for new features to install**, and select **Next**.
- Step 4** In the Update sites to visit window, select **Add Remote Location** (or **New Remote Site** for Sametime 7.5.1 CF1).
- Step 5** Enter an update site name and URL.
For example, name “Cisco Unified Videoconferencing Connector” and URL `http://<server>/sametime`.
Where <server> stands for either the IP address or FQDN of the server hosting the update site.
- Step 6** Select **OK** to save the location.
- Step 7** Check the checkbox for the new location.
- Step 8** Select **Finish**.
- Step 9** In the Search Results window, expand the tree labeled with the name that you entered at Step 5 to view all available Cisco Unified Videoconferencing Connector plug-ins.
- Step 10** Choose the latest version of the Cisco Unified Videoconferencing Connector plug-in and click **Next**.
- Step 11** In the Feature License window, accept the terms of the license agreement and select **Next**.
- Step 12** In the Installation window, select **Finish**.
If the installation is successful, you are prompted to restart the Sametime client to access to the new plug-ins.
Installation is now complete and the Cisco Unified Videoconferencing Connector plug-in Preferences window is now available.
-

Preventing Manual Downloading

This section describes how Sametime you can prevent users from performing manual downloads to a Sametime Connect client.

Procedure

- Step 1** On the Sametime server host machine, open the `sametime.ini` configuration file located at `\Lotus\Domino`.
 - Step 2** Under the `[config]` section, add the following line: `DisableConnectPluginUpdates=1`.
 - Step 3** Restart the server and reconnect with the client.
The user options are grayed out.
In the Sametime Connect client user interface, the options under **Tools > Plug-ins** are disabled.
-

Installing the Cisco Unified Videoconferencing Connector without an HTTP Server

This section describes how to install the Cisco Unified Videoconferencing Connector plug-in in Sametime Connect client from a local file without using an HTTP server. To do this, you locate the update site in a shared network directory. Users can then access this directory from the Sametime Client interface.

Procedure

- Step 1** Save the `sametime` directory to a shared network location.
 - Step 2** In the Sametime Connect client user interface, choose **Tools > Plug-ins > Install plug-ins**.
 - Step 3** In the Feature Updates window choose **Search for new features to install**, and select **Next**.
 - Step 4** In the Update sites to visit window, select **Add Folder Location** (for Sametime 8.0) or **New Local Site** (for Sametime 7.5.1), navigate to the saved `sametime` directory and select **OK**.
 - Step 5** Select **Finish**. The Sametime Connect client now searches for updates from the defined site.
 - Step 6** In the Search Results window, select `sametime`.
 - Step 7** Enter a new name for the directory and select **OK**, or leave the directory name unchanged.
 - Step 8** Select **Next**.
 - Step 9** In the Feature License window, accept the terms of the license agreement and select **Next**.
 - Step 10** In the Installation window, select **Finish**.
 - Step 11** Select **Install** or **Install All**.
If the installation is successful, you are prompted to restart the Sametime client to access to the new plug-ins.
Installation is now complete and the Cisco Unified Videoconferencing Connector plug-in Preferences window is now available.
-

Distribution Methods for the Cisco Unified Videoconferencing Connector

You can distribute the Cisco Unified Videoconferencing Connector plug-in by using these methods:

- “Pushing” the plug-in to all Lotus Sametime Connect users in a specified community.
The plug-in is automatically downloaded to the client when the user launches Lotus Sametime Connect. The user is notified of the update and can choose to automatically restart the client to load the new plug-in.
For more information, see [How to Automatically Deploy the Cisco Unified Videoconferencing Connector, page 3](#).
- Sending the update site URL to users:
Users must retrieve and install the plug-in manually using the Lotus Sametime Connect Manage Updates user interface.

For more information, see [Manually Installing the Cisco Unified Videoconferencing Connector from an Update Site, page 5](#). You can optionally prevent users from performing this procedure. For more information, see [Preventing Manual Downloading, page 6](#).

3 Integrating Cisco Unified Videoconferencing Connector for Lotus Sametime Web Conferencing into the Sametime Deployment

- [About Deploying IBM Lotus Sametime Web Conferencing with Cisco Unified Videoconferencing Connector Deployment, page 7](#)
- [Installing the Sametime Connector on the Cisco Unified Videoconferencing Desktop Server, page 10](#)
- [How to Prepare the Sametime Servers, page 10](#)
- [Configuring the Sametime Settings on the Cisco Unified Videoconferencing Desktop Server, page 11](#)

About Deploying IBM Lotus Sametime Web Conferencing with Cisco Unified Videoconferencing Connector Deployment

When you integrate IBM Lotus Sametime with Desktop, your users can add real-time multipoint video and audio to Sametime Web meetings. To accomplish this, you must associate a Cisco Unified Videoconferencing Desktop Server with an IBM Lotus Sametime Community deployment.

You use two modules for the integration:

- Sametime Connector, a Sametime Community Server application that runs as part of the Desktop middleware
- Sametime Meeting Room Client Javascript extension that is used to realize the user interface inside the Sametime Meeting Room Client

Sametime Connector detects the start of a Sametime meeting and attaches meeting attributes along with an ID of a Desktop ad-hoc meeting which is generated at that time. The Javascript extension is loaded with the Meeting Room Client when a user joins a Sametime meeting and pulls the video meeting information from the meeting so that all attendees transparently join the same video meeting.

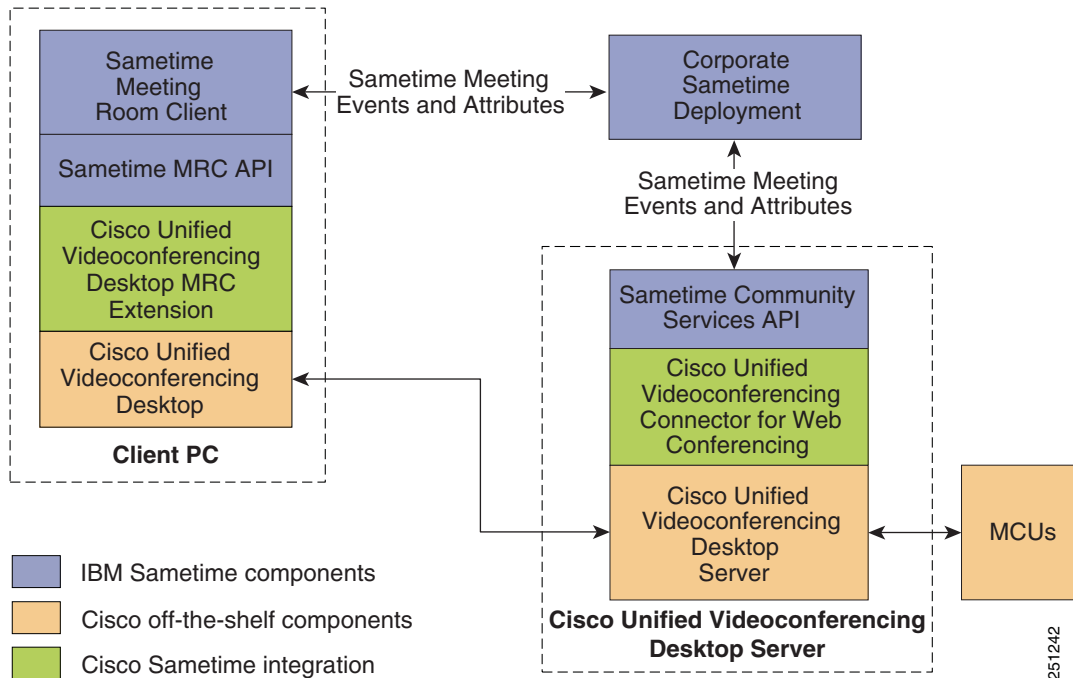
Read these sections to correctly plan your deployment:

- [Simple Sametime Deployments, page 8](#)
- [Multiple Sametime Community Hubs Deployments, page 8](#)

Simple Sametime Deployments

Use this diagram when planning your Sametime Deployment.

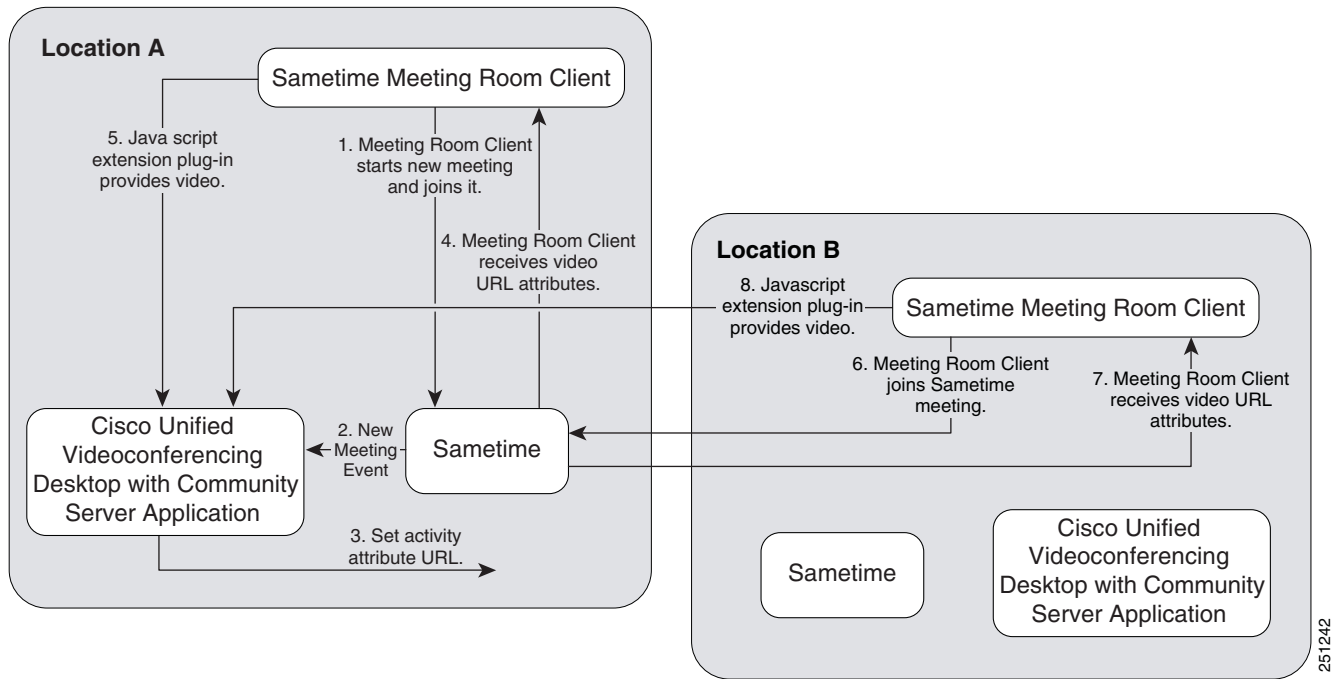
Figure 1 Simple Sametime Deployment



Multiple Sametime Community Hubs Deployments

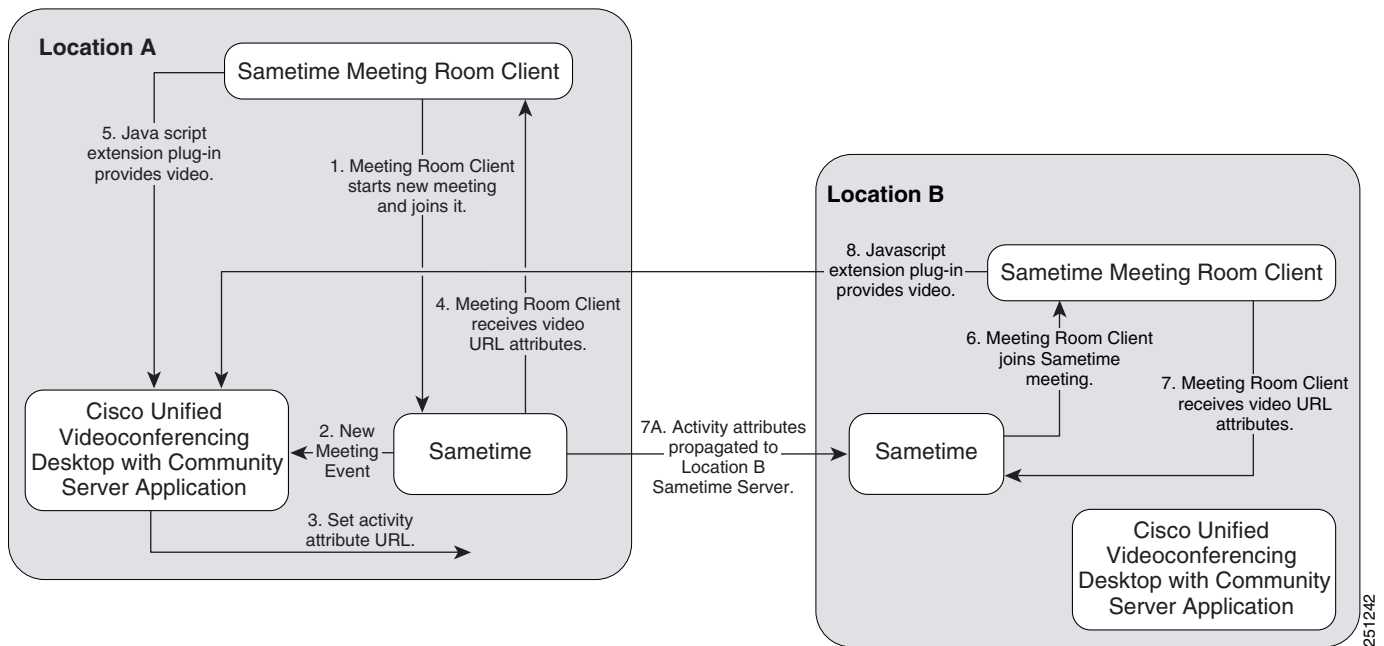
In deployments described in this section, there may be multiple community hubs. Users schedule meetings through their home Sametime Server and may invite users from the same home server as well as users from other Community Server clusters. The meetings may be hosted on the home Sametime Server of the meeting creator as shown on [Figure 2 on page 9](#). In this case, meeting attributes do not need to be propagated to the other server.

Figure 2 Multiple Sametime Community Hub Deployment for non-propagated meetings



Alternatively, meetings may be hosted on different Sametime Servers. In this case, the meeting information and attributes are propagated from the home Sametime Server to the other server as shown on [Figure 3](#).

Figure 3 Multiple Sametime Community Hub Deployment for propagated meetings



Installing the Sametime Connector on the Cisco Unified Videoconferencing Desktop Server

Procedure

- Step 1** On the Cisco Unified Videoconferencing Desktop Server, navigate to this location: `>InstallDir>Desktop\SametimeWeb`.
- Step 2** Double-click the `enable_sametime.vbs` file.
- Step 3** Select **OK** in the confirmation message.
- When the installation is completed, a message is displayed explaining that the Sametime Connector is installed and the log file is created.
-

How to Prepare the Sametime Servers

- [Enabling Community Services Connectivity, page 10](#)
- [Installing the Meeting Room Client Javascript Extension, page 10](#)

Enabling Community Services Connectivity

To prepare the Sametime server for the Cisco Unified Videoconferencing Connector for IBM Lotus Sametime Web Conferencing, you must edit the Sametime configuration: open the IBM Domino Administrator Application and change the IP address configuration of the Cisco Unified Videoconferencing Desktop Server to allow connection to Community Services. Perform this procedure on every Sametime server that has a Cisco Unified Videoconferencing Desktop Server associated with it.

Procedure

- Step 1** Open the IBM Domino Administrator application.
- Step 2** Select the **Domain** tab.
- Step 3** Select the **Files** tab.
- Step 4** Navigate to this location: `\Program Files\IBM\Lotus\Domino\Data`.
- Step 5** Double-click the Sametime Configuration file.
- Step 6** Select **By Form** in the left pane.
- Step 7** Right-click the **CommunityConnectivity**, and then select **Edit**.
- The form opens.
- Step 8** Enter the IP address of the Cisco Unified Videoconferencing Desktop Server in the Community Trusted IPS field.
- Step 9** Select **File > Save**.
-

Installing the Meeting Room Client Javascript Extension

To enable the video integration, you need to copy a file to the Sametime server. This file was placed on the Cisco Unified Videoconferencing Desktop Server during the Cisco Unified Videoconferencing Connector installation.

Procedure

- Step 1** On the Cisco Unified Videoconferencing Desktop Server, navigate to this location:
Program Files\Cisco\Desktop\SametimeWeb\
- Step 2** Copy the `SDMrcExtension.js` file.

- Step 3** On the Sametime server, create this location:
\\Program Files\IBM\Lotus\Domino\data\domino\html\sametime\jsex
- Step 4** Paste the copied file into this location.
-

Configuring the Sametime Settings on the Cisco Unified Videoconferencing Desktop Server

You need to configure the Cisco Unified Videoconferencing Desktop Server to work with the Sametime Server.

By default, the Cisco Unified Videoconferencing Desktop Server generates meeting IDs for IBM Lotus Sametime Web Conferencing meetings dynamically. The Cisco Unified Videoconferencing Desktop Server uses a service number configured in MCU as a meeting prefix, adding a randomly generated four-digit number to it to create a meeting ID. In deployments using Cisco Unified Videoconferencing Manager, you can configure the Cisco Unified Videoconferencing Desktop Server to use a predefined virtual room.

Before You Begin

- Access the Desktop Administration web user interface.
- Verify the Sametime Server address.
- Verify which port on the Sametime Server you need to assign to the Cisco Unified Videoconferencing Desktop Server.

Procedure

- Step 1** Select **Sametime** in the sidebar.
- Step 2** Enter the Sametime Server address.
- Step 3** Enter the port on the Sametime Server.
The default port is 1516.
- Step 4** For deployments using MCU, select **Generate meeting IDs dynamically, using the specified meeting prefix**, and then enter the meeting prefix. The meeting ID generated by Cisco Unified Videoconferencing Desktop Server will be based on the meeting prefix you define.
-or-
- Step 5** For deployments using Cisco Unified Videoconferencing Manager, select **Use the meeting creator's virtual room**. The virtual room configured for this user on Cisco Unified Videoconferencing Manager will be used.
- Step 6** Enter the meeting prefix for the Cisco Unified Videoconferencing Desktop Server to use for the Sametime meetings.
- Step 7** If necessary, set the number of video panes displayed in the Conference Client pane when it is opened in the Sametime Meeting Room window:
- a. Select **Set the initial view that users will see when they join a Sametime meeting**.
 - b. Select one of these options:
 - 1 Video
 - 2 Videos
- Step 8** If necessary, select **Enable Audio in Desktop for Sametime meetings**.
- Step 9** If necessary, select **Allow only the Sametime Meeting Chair to add video to a meeting**. This allows a Sametime Meeting chair to control when the video pane is displayed in the user's meeting room client.



Note This feature is not available if the Cisco Unified Videoconferencing Connector is configured to work with the Sametime Server version 7.5.1.

- Step 10** If necessary, select **Allow only the Sametime Meeting Chair to moderate a meeting**. This determines whether audio and video moderation functions are enabled only a Sametime Meeting chair or for all participants in a Desktop meeting.

Step 11 Select **OK** or **Apply**.

Step 12 Verify that the connection to the Sametime Server is successful:

- a. Select **Status** in the sidebar.
- b. Select the link showing the IP address of the Sametime Server to display the settings.

The indicator next to the link shows whether or not the connection to the Sametime server is successful. When the indicator is red, a tooltip containing error details is available. Select the red indicator to view further error information.

4 Obtaining Documentation and Submitting a Service Request

For information on obtaining documentation, submitting a service request, and gathering additional information, see the monthly *What's New in Cisco Product Documentation*, which also lists all new and revised Cisco technical documentation, at:

<http://www.cisco.com/en/US/docs/general/whatsnew/whatsnew.html>

Subscribe to the *What's New in Cisco Product Documentation* as a Really Simple Syndication (RSS) feed and set content to be delivered directly to your desktop using a reader application. The RSS feeds are a free service and Cisco currently supports RSS version 2.0.

CCDE, CCENT, CCSI, Cisco Eos, Cisco Explorer, Cisco HealthPresence, Cisco IronPort, the Cisco logo, Cisco Nurse Connect, Cisco Pulse, Cisco SensorBase, Cisco StackPower, Cisco StadiumVision, Cisco TelePresence, Cisco TrustSec, Cisco Unified Computing System, Cisco WebEx, DCE, Flip Channels, Flip for Good, Flip Mino, Flipshare (Design), Flip Ultra, Flip Video, Flip Video (Design), Instant Broadband, and Welcome to the Human Network are trademarks; Changing the Way We Work, Live, Play, and Learn, Cisco Capital, Cisco Capital (Design), Cisco:Financed (Stylized), Cisco Store, Flip Gift Card, and One Million Acts of Green are service marks; and Access Registrar, Aironet, AllTouch, AsyncOS, Bringing the Meeting To You, Catalyst, CCDA, CCDP, CCIE, CCIP, CCNA, CCNP, CCSP, CCVP, Cisco, the Cisco Certified Internetwork Expert logo, Cisco IOS, Cisco Lumin, Cisco Nexus, Cisco Press, Cisco Systems, Cisco Systems Capital, the Cisco Systems logo, Cisco Unity, Collaboration Without Limitation, Continuum, EtherFast, EtherSwitch, Event Center, Explorer, Follow Me Browsing, GainMaker, iLynx, IOS, iPhone, IronPort, the IronPort logo, Laser Link, LightStream, Linksys, MeetingPlace, MeetingPlace Chime Sound, MGX, Networkers, Networking Academy, PCNow, PIX, PowerKEY, PowerPanels, PowerTV, PowerTV (Design), PowerVu, Prisma, ProConnect, ROSA, SenderBase, SMARTnet, Spectrum Expert, StackWise, WebEx, and the WebEx logo are registered trademarks of Cisco and/or its affiliates in the United States and certain other countries.

All other trademarks mentioned in this document or website are the property of their respective owners. The use of the word partner does not imply a partnership relationship between Cisco and any other company. (1002R)

Any Internet Protocol (IP) addresses used in this document are not intended to be actual addresses. Any examples, command display output, and figures included in the document are shown for illustrative purposes only. Any use of actual IP addresses in illustrative content is unintentional and coincidental.

© 2010 Cisco Systems, Inc. All rights reserved.