



INTEGRATION NOTE



Installing and Configuring the Cisco Unified Videoconferencing Desktop Connector Plug-In Release 5.7 with IBM Lotus Sametime Web Conferencing

- [1 Planning to Deploy IBM Lotus Sametime Web Conferencing with Cisco Unified Videoconferencing Connector Deployment, page 2](#)
- [2 Integrating Cisco Unified Videoconferencing Connector into the Sametime Deployment, page 4](#)

1 Planning to Deploy IBM Lotus Sametime Web Conferencing with Cisco Unified Videoconferencing Connector Deployment

When you integrate IBM Lotus Sametime with Desktop, your users can add real-time multipoint video and audio to Sametime Web meetings. To accomplish this, you must associate a Cisco Unified Videoconferencing Desktop Server with an IBM Lotus Sametime community deployment.

You use two modules for the integration:

- Sametime Connector, a Sametime Community Server application that runs as part of the Desktop Middleware
- Sametime Meeting Room Client Javascript extension that creates the user interface inside the Sametime Meeting Room Client

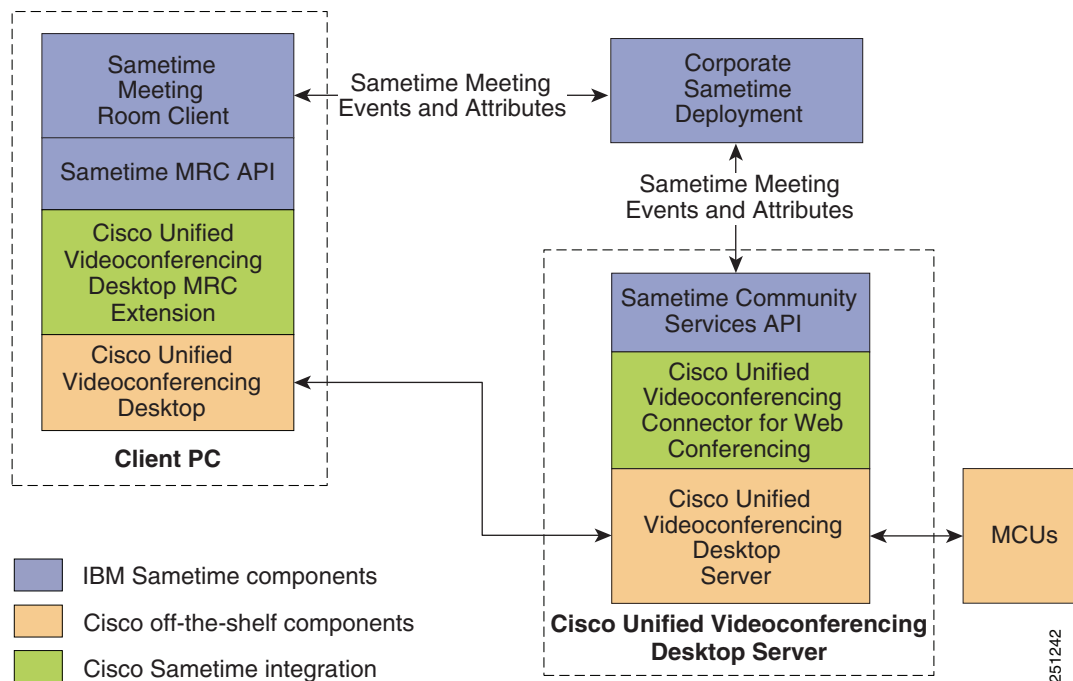
Sametime Connector detects the start of a Sametime meeting and attaches meeting attributes along with an ID of Desktop ad-hoc meeting which is generated at that time. The Javascript extension is loaded with the Meeting Room Client when a user joins a Sametime meeting and pulls the video meeting information from the meeting so that all attendees transparently join the same video meeting.

- [Simple Sametime Deployments, page 2](#)
- [Multiple Sametime Community Hubs Deployments, page 3](#)

Simple Sametime Deployments

Use this diagram when planning your Sametime Deployment.

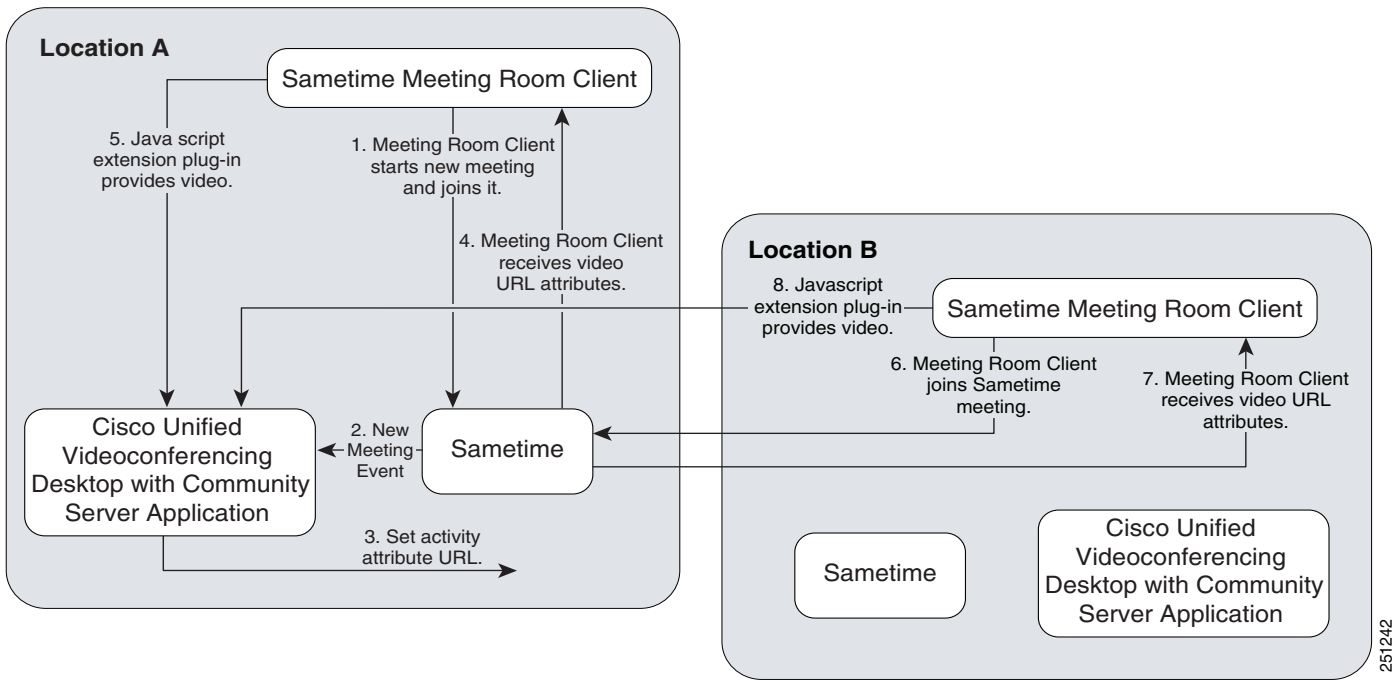
Figure 1 Simple Sametime Deployment



Multiple Sametime Community Hubs Deployments

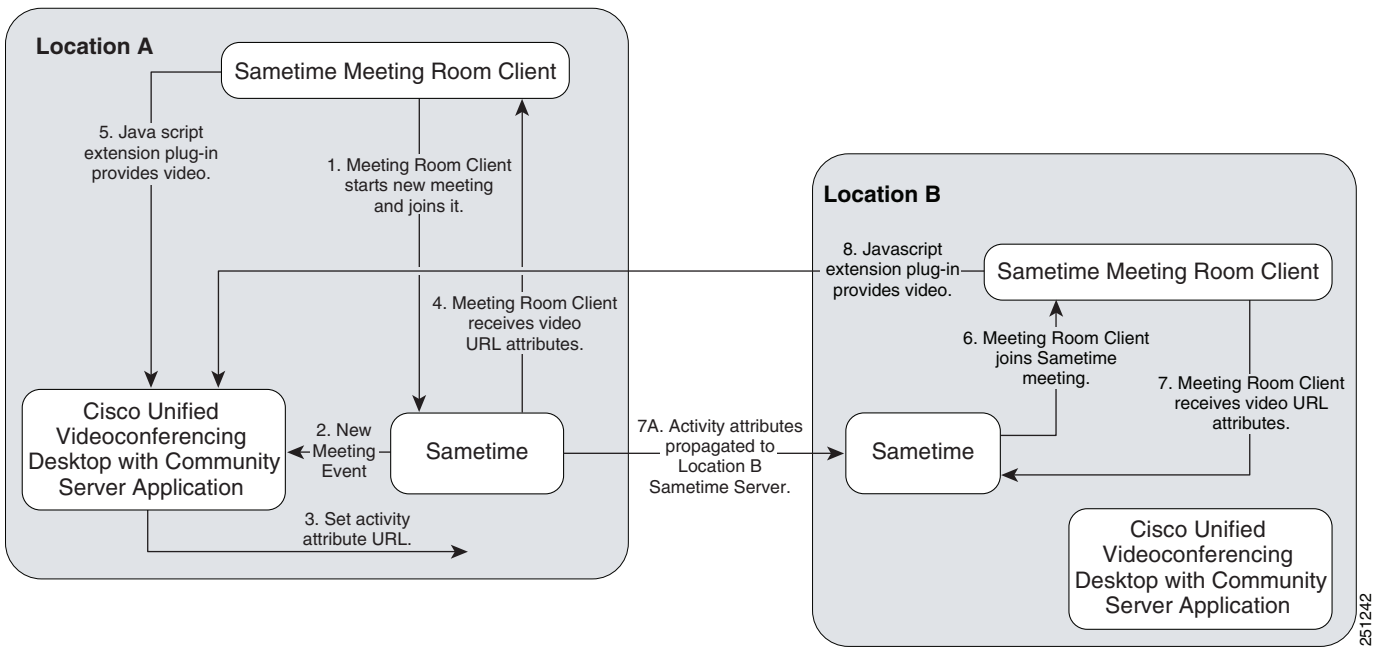
In deployments described in this section, there may be multiple community hubs. If you want users on all hubs to be able to add video to their meetings, there needs to be a Cisco Unified Videoconferencing Desktop Server dedicated to each community hub.

Figure 2 Multiple Sametime Community Hub Deployment for non-propagated meetings



Alternatively, meetings may be hosted on different Sametime Servers. In this case, the meeting information and attributes are propagated from the home Sametime Server to the other server as shown on [Figure 3](#).

Figure 3 Multiple Sametime Community Hub Deployment for propagated meetings



2 Integrating Cisco Unified Videoconferencing Connector into the Sametime Deployment

- [Installing the Sametime Connector on the Cisco Unified Videoconferencing Desktop Server, page 4](#)
- [Preparing the Sametime Servers, page 4](#)
- [Configuring the Sametime Settings on the Cisco Unified Videoconferencing Desktop Server, page 5](#)

Installing the Sametime Connector on the Cisco Unified Videoconferencing Desktop Server

Procedure

Step 1 Copy the installation files to a folder on the Cisco Unified Videoconferencing Desktop Server.

Step 2 Double-click the *install.vbs* file.

Step 3 Click OK in the confirmation message.

When the installation is completed, a message is displayed explaining that the Sametime Connector is installed and the log file is created.

Preparing the Sametime Servers

- [Enabling Community Services Connectivity, page 4](#)
- [Installing the Meeting Room Client Javascript Extension, page 5](#)

Enabling Community Services Connectivity

To prepare the Sametime server for the Cisco Unified Videoconferencing Connector for IBM Lotus Sametime Web Conferencing, you must edit the Sametime configuration. Open the IBM Domino Administrator Application and change the IP address configuration of the Cisco Unified Videoconferencing Desktop Server to allow connection to Community Services. Perform this procedure on every Sametime server which has a Cisco Unified Videoconferencing Desktop Server associated with it.

Procedure

Step 1 Open the IBM Domino Administrator application.

Step 2 Click the **Domain** tab.

Step 3 Click the **Files** tab.

Step 4 Navigate to this location: *\Program Files\IBM\Lotus\Domino\Data*.

Step 5 Double-click the Sametime Configuration file.

Step 6 Click **By Form** in the left pane.

Step 7 Right-click the **CommunityConnectivity**, and then select **Edit**.

The form opens.

Step 8 Enter the IP address of the Cisco Unified Videoconferencing Desktop Server in the Community Trusted IPS field.

Step 9 Click **File > Save**.

Installing the Meeting Room Client Javascript Extension

To enable the video integration, you need to copy a file to the Sametime server. This file was placed on the Cisco Unified Videoconferencing Desktop Server during the Cisco Unified Videoconferencing Connector installation.

Procedure

- Step 1** On the Cisco Unified Videoconferencing Desktop Server, navigate to this location:
Program Files\Cisco\Desktop\SametimeWeb\
Step 2 Copy the *SDMrcExtension.js* file.
Step 3 On the Sametime server, navigate to this location:
\Program Files\Lotus\Domino\data\domino\html\sametime\jsex
Step 4 Paste the copied file into this location.
-

Configuring the Sametime Settings on the Cisco Unified Videoconferencing Desktop Server

You need to configure the Cisco Unified Videoconferencing Desktop Server to work with the Sametime Server.

Before You Begin

- Access the Desktop Administration web user interface.
- Verify the Sametime Server address.
- Verify which port on the Sametime Server you need to assign to the Cisco Unified Videoconferencing Desktop Server.

Procedure

- Step 1** Click **Sametime** in the sidebar.
Step 2 Enter the Sametime Server address.
Step 3 Enter the port on the Sametime Server.
The default port is 1516.
Step 4 Enter the meeting prefix for the Cisco Unified Videoconferencing Desktop Server to use for the Sametime meetings.
Step 5 If necessary, set the number of video panes displayed in the Conference Client pane when it is opened in the Sametime Meeting Room window:
a. Select **Set the initial view that users will see when they join a Sametime meeting.**
b. Click one of these options:
 - 1 Video
 - 2 Videos**Step 6** If necessary, select **Enable Audio in Desktop for Sametime meetings.**
Step 7 If necessary, select **Allow only the Sametime Meeting Chair to add video to a meeting.** This allows a Sametime Meeting chair to control when the video pane is displayed in the user's meeting room client.



Note

This feature is not available if the Cisco Unified Videoconferencing Connector is configured to work with the Sametime Server version 7.5.1.

- Step 8** If necessary, select **Allow only the Sametime Meeting Chair to moderate a meeting.** This determines whether audio and video moderation functions are enabled only a Sametime Meeting chair or for all participants in a Desktop meeting.

Step 9 Click **OK** or **Apply**.

Step 10 Verify that the connection to the Sametime Server is successful:

- a. Click **Status** in the sidebar.
- b. Click the link showing the IP address of the Sametime Server to display the settings.

The indicator next to the link shows whether or not the connection to the Sametime server is successful. When the indicator is red, a tooltip containing error details is available. Click the red indicator to view further error information.
