

# Overview

---

The IOS Release 12.0(5)XP Enterprise Edition Software supplies advanced virtual LAN (VLAN) functionality, QoS, and other features that are in addition to the IOS Release 12.0(5)XP standard edition software. VLANs are also supported on the standard edition software, but the number of VLANs that a switch supports can vary. Table 1-1 shows the switches that can run this IOS release and the number of VLANs that each switch can support.

---

**Note** This IOS release runs on Catalyst 2900 XL and Catalyst 3500 XL switches. In this guide, *switches* refers to any of the 2900 or 3500 XL switches.

---

The following features make up the Enterprise Edition Software:

- IEEE 802.1p QoS support
- VTP Version 2
- Inter-Switch Link (ISL) and IEEE 802.1Q trunking
- Dynamic-access VLANs
- Load sharing and redundancy over parallel trunks
- STP (Spanning-Tree Protocol) UplinkFast
- TACACS+ (Terminal Access Controller Access Control System Plus)

This guide documents just the Enterprise Edition Software and is a supplement to the other documents in the switches documentation set. For a complete documentation list, refer to “Related Publications” section on page xi.

---

**Note** Enterprise Edition Software features are also documented in the web-based Cisco Visual Switch Manager (CVSM) software help system.

---

**Table 1-1** Switches Supported by Cisco IOS 12.0(5)XP

Model	IOS Release 12.0(5)XP (-A) VLANs	IOS Release 12.0(5)XP (-EN) VLANs	Trunking Supported?
3500 XL switches	250	250	Yes
2900 XL modular switches (with 8 MB of DRAM)	250	250	Yes
2900 XL fixed switches (with 8 MB of DRAM)	64	64	Yes

Use the **show version** User EXEC command to determine whether your switch has 4 MB or 8 MB of DRAM.

## Upgrading to Enterprise Edition Software

Supported switches can be ordered with the Enterprise Edition Software described in this guide or with the standard edition software. All standard edition features are included in the Enterprise Edition Software. See the *Release Notes for Catalyst 2900 Series XL and Catalyst 3500 Series XL Cisco IOS Release 12.0(5)XP* for a complete list of the available switches and modules.

You can upgrade any switch to the Enterprise Edition Software by purchasing an upgrade kit and using a TFTP server to copy the new image files to your switch. See your Cisco representative or reseller for details on purchasing an upgrade kit.

---

**Note** Although all switches can run the Enterprise Edition Software, some legacy switches cannot be upgraded to run Release 12.0(5)XP standard edition software. Table 1-1 lists all of the switch models and the software versions they can run.

---

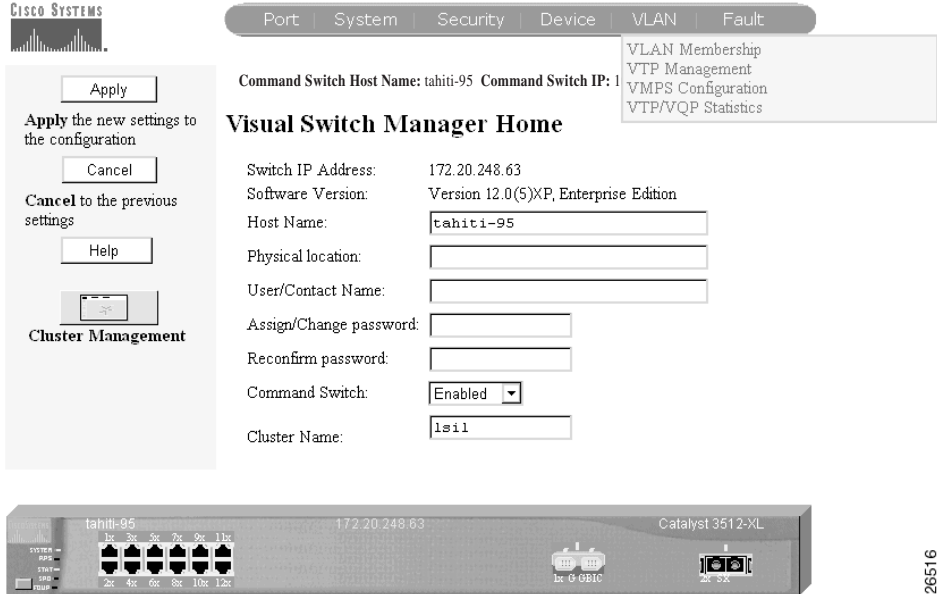
# Management Options

This guide describes how to implement Enterprise Edition Software features by using the Cisco IOS command-line interface (CLI). Enterprise Edition Software features can also be managed through the following interfaces:

- Cisco Visual Switch Manager (CVSM) software
- CiscoView application
- Simple Network Management Protocol (SNMP)

Figure 1-1 shows the VLAN menu on the CVSM home page. All Enterprise Edition Software VLAN features are available from this menu and are described in the CVSM help system.

Figure 1-1 Visual Switch Manager Software VLAN Menu



26516

