



## APPENDIX **A**

# Launching Fabric Manager in Cisco SAN-OS Releases Prior to 3.2(1)

---

This appendix provides instructions for launching Fabric Manager Client in Cisco SAN-OS releases prior to 3.2(1).

This Appendix contains the following sections:

- [Setting the Seed Switch in Cisco SAN-OS Releases 3.1\(1\) to 3.2\(1\), page A-1](#)
- [Setting the Seed Switch in Releases Prior to Cisco SAN-OS Release 3.1\(1\), page A-3](#)

## Setting the Seed Switch in Cisco SAN-OS Releases 3.1(1) to 3.2(1)



### Note

As of Cisco SAN-OS Release 3.1(1), the Fabric Manager login procedure changed. If you are running a version of Cisco SAN-OS that is earlier than Cisco SAN-OS 3.1(1), follow the login instructions in the [“Setting the Seed Switch in Releases Prior to Cisco SAN-OS Release 3.1\(1\)”](#) section on page A-3.

From Cisco SAN-OS Release 3.1(1) to Release 3.2(1), you must log in to Fabric Manager Server before you discover or open fabrics, and these fabrics can have different user credentials. You can specify different SNMP communities per switch on the Web Server.



### Note

The default user name is **admin** and the default password is **password** for your initial login. This information is stored in the database. Both the Fabric Manager Server and the Web Server share the same user credential database.

To log in to Fabric Manager Server and to open a fabric, follow these steps:

### Step 1

Double-click the **Fabric Manager Client** icon on your workstation.

You see the Fabric Manager Server Login dialog box shown in [Figure A-1](#).

**Send documentation comments to [mdsfeedback-doc@cisco.com](mailto:mdsfeedback-doc@cisco.com)**

**Figure A-1 Fabric Manager Server Login Dialog Box**



- Step 2** Set FM Server to the IP address where you installed Fabric Manager Server, or set it to **localhost** if you installed Fabric Manager Server on your local workstation.

If you forget your password, you can run one of the following scripts:

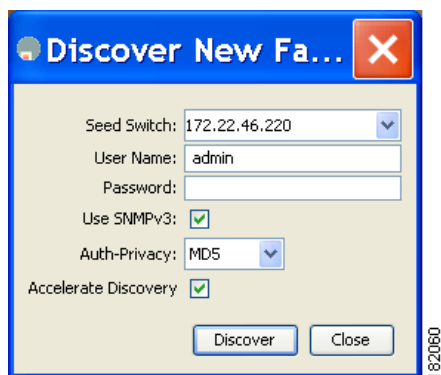
- **bin\webUserAdd.bat admin password** adds a user name and password to the Fabric Manager Server database.
- **bin\DBReset.bat** resets the database back to the initial state and removes any discovered fabrics.

Both of these scripts are available as UNIX .sh files.

- Step 3** Enter the Fabric Manager Server user name and password.
- Step 4** Check the **Use SNMP Proxy** check box if you want Fabric Manager Client to communicate with Fabric Manager Server through a TCP-based proxy server.
- Step 5** Click **Login**. After you successfully log in to Fabric Manager Server, you can set the seed switch and open the fabrics that you are entitled to access.

You see the Discover New Fabric dialog box shown in [Figure A-2](#).

**Figure A-2 Discover New Fabric Dialog Box**



- Step 6** Set the fabric seed switch to the Cisco MDS 9000 Family switch that you want Fabric Manager to use.
- Step 7** Enter the user name and password for the switch.
- Step 8** Choose the Auth-Privacy option MD5-DES (default) when you log in.

**Send documentation comments to [mdsfeedback-doc@cisco.com](mailto:mdsfeedback-doc@cisco.com)**

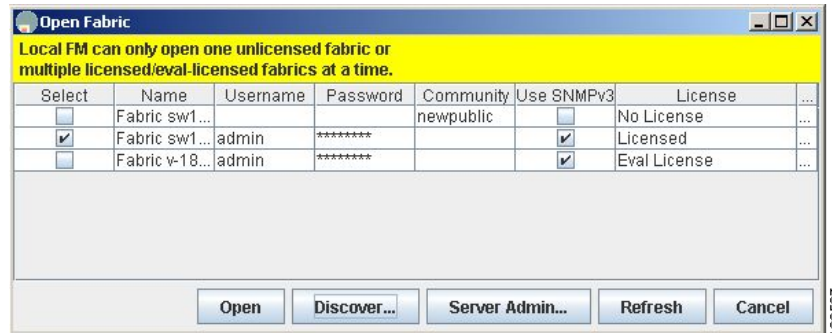


**Note** The Accelerate Discovery check box should remain checked for normal operation. Uncheck this only if you have changed switch IP addresses. You may experience problems with SAN IDs in Fabric Manager if you uncheck this check box.

**Step 9** Click **Discover**.

You see the Open Fabric dialog box shown in [Figure A-3](#).

**Figure A-3** Open Fabric Dialog Box



**Step 10** Check the check box(es) next to the fabric(s) you want to open in the Select column, or click the **Discover** button to add a new fabric.



**Note** As of Cisco SAN-OS Release 3.1(1) and later, opening multiple fabrics is a licensed feature. You will get an error message if you open more than one unlicensed fabric.



**Note** As of Cisco SAN-OS Release 3.1(2b), a license can be a permanent license, an evaluation license, or there are no licenses (all evaluation licenses have expired).

**Step 11** Click **Open** to open the fabric.

## Setting the Seed Switch in Releases Prior to Cisco SAN-OS Release 3.1(1)



**Note** As of Cisco SAN-OS Release 3.1(1), the Fabric Manager login procedure changed. If you are running Cisco SAN-OS Releases 3.1(1) to 3.2(1), then follow the login instructions in the [“Setting the Seed Switch in Cisco SAN-OS Releases 3.1\(1\) to 3.2\(1\)”](#) section on page A-1.

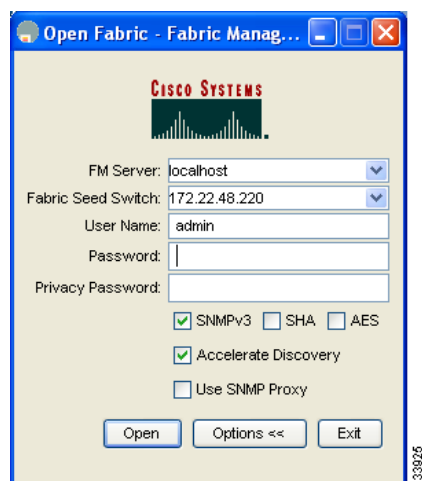
**Send documentation comments to [mdsfeedback-doc@cisco.com](mailto:mdsfeedback-doc@cisco.com)**

When you run Fabric Manager, you must select a switch for Fabric Manager to use to discover the fabric. For releases earlier than Cisco SAN-OS Release 3.1(1), use the same user name and password on each of the multiple fabrics that you open, then log in directly to the MDS 9000 Family switch that you want Fabric Manager to use.

To set the seed switch if you are running a version of Cisco SAN-OS that is earlier than Cisco SAN-OS Release 3.1(1), follow these steps:

- 
- Step 1** Double-click the **Fabric Manager Client** icon on your workstation.  
You see the Fabric Manager Login dialog box shown in [Figure A-4](#).

**Figure A-4** Open Fabric Dialog Box



- Step 2** Click the **Options** button if necessary to expand the optional settings in this dialog box.
- Step 3** Set FM Server to the IP address where you installed Fabric Manager Server, or set it to **localhost** if you installed Fabric Manager Server on your local workstation.
- Step 4** Set the fabric seed switch to the MDS 9000 Family switch that you want Fabric Manager to use.
- Step 5** Enter the user name and password for the switch.
- Step 6** Check the **Use SNMP Proxy** check box if you want Fabric Manager Client to communicate with Fabric Manager Server through a TCP-based proxy server.




---

**Note** The Accelerate Discovery check box should remain checked for normal operation. Uncheck this only if you have changed switch IP addresses. You may experience problems with out of sync SAN IDs in Fabric Manager if you uncheck this check box.

---

- Step 7** Click **Open** to open the fabric.
-