



## CHAPTER 30

# Configuring FIPS

---

The Federal Information Processing Standards (FIPS) Publication 140-2, *Security Requirements for Cryptographic Modules*, details the U.S. government requirements for cryptographic modules. FIPS 140-2 specifies that a cryptographic module shall be a set of hardware, software, firmware, or some combination thereof that implements cryptographic functions or processes, including cryptographic algorithms and, optionally, key generation, and is contained within a defined cryptographic boundary.

FIPS specifies certain crypto algorithms as secure, and it also identifies which algorithms should be used if a cryptographic module is to be called FIPS compliant.



**Note**

---

Cisco MDS SAN-OS Release 3.1(1) implements FIPS features and is currently in the certification process with the U.S. government, but it is not FIPS compliant at this time.

---

This chapter includes the following sections:

- [Configuration Guidelines, page 30-2](#)
- [Enabling FIPS Mode, page 30-2](#)
- [FIPS Self-Tests, page 30-3](#)

*Send documentation comments to [mdsfeedback-doc@cisco.com](mailto:mdsfeedback-doc@cisco.com)*

## Configuration Guidelines

Follow these guidelines before enabling FIPS mode.

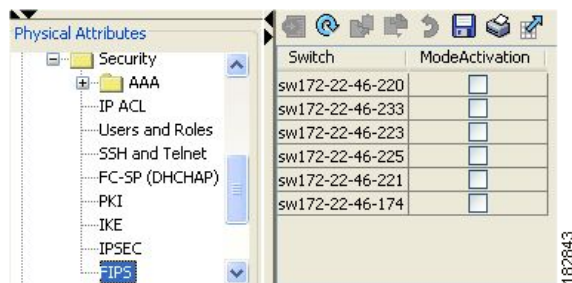
- Make your passwords a minimum of eight characters in length.
- Disable Telnet. Users should log in using SSH only.
- Disable remote authentication through RADIUS/TACACS+. Only users local to the switch can be authenticated.
- Disable SNMP v1 and v2. Any existing user accounts on the switch that have been configured for SNMPv3 should be configured only with SHA for authentication and AES/3DES for privacy.
- Disable VRRP.
- Delete all IKE policies that either have MD5 for authentication or DES for encryption. Modify the policies so they use SHA for authentication and 3DES/AES for encryption.
- Delete all SSH Server RSA1 key-pairs.

## Enabling FIPS Mode

To enable FIPS mode using Fabric Manager, follow these steps:

- Step 1** Expand **Switches** from the Physical Attributes pane. Expand **Security** and then select **FIPS**. You see the FIPS activation details in the Information pane as shown in [Figure 30-1](#).

**Figure 30-1** FIPS Activation in Fabric Manager



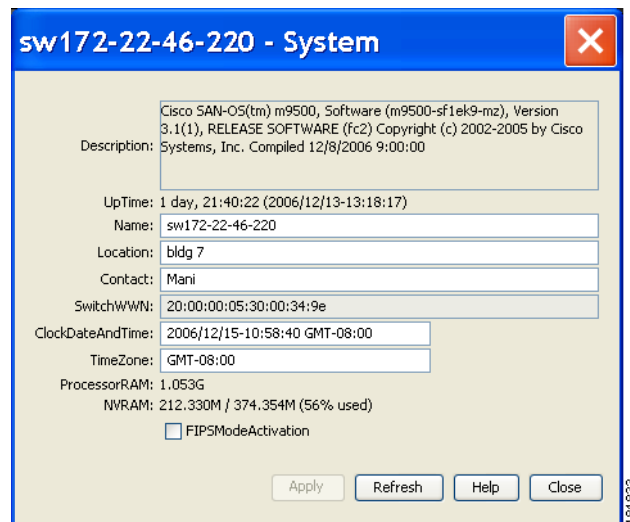
- Step 2** Check the **ModeActivation** check box next to the switch for which you want to enable FIPS mode.
- Step 3** Click **Apply Changes** to commit and distribute these changes.
- Step 4** Click **Undo Changes** to discard any unsaved changes.

To enable FIPS mode using Device Manager, follow these steps:

- Step 1** Choose **Physical > System** or right-click and select **Configure**. You see the System dialog box as shown in [Figure 30-2](#).

**Send documentation comments to [mdsfeedback-doc@cisco.com](mailto:mdsfeedback-doc@cisco.com)**

**Figure 30-2 System Dialog Box**



- Step 2** Check the **FIPSMoDeActivation** check box to enable FIPS mode on the selected switch.
- Step 3** Click **Apply** to save the changes.
- Step 4** Click **Close** to close the dialog box.

## FIPS Self-Tests

A cryptographic module must perform power-up self-tests and conditional self-tests to ensure that it is functional.



### Note

FIPS power-up self-tests automatically run when FIPS mode is enabled. A switch is in FIPS mode only after all self-tests are successfully completed. If any of the self-tests fail, then the switch is rebooted.

Power-up self-tests run immediately after FIPS mode is enabled. A cryptographic algorithm test using a known answer must be run for all cryptographic functions for each FIPS 140-2-approved cryptographic algorithm implemented on the Cisco MDS 9000 Family.

Using a known-answer test (KAT), a cryptographic algorithm is run on data for which the correct output is already known, and then the calculated output is compared to the previously generated output. If the calculated output does not equal the known answer, the known-answer test fails.

Conditional self-tests must be run when an applicable security function or operation is invoked. Unlike the power-up self-tests, conditional self-tests are executed each time their associated function is accessed.

Conditional self-tests include the following:

- Pair-wise consistency test—This test is run when a public-private key-pair is generated.
- Continuous random number generator test—This test is run when a random number is generated.

Both of these tests automatically run when a switch is in FIPS mode.

***Send documentation comments to [mdsfeedback-doc@cisco.com](mailto:mdsfeedback-doc@cisco.com)***