



# CHAPTER 8

## Symantec ManHunt

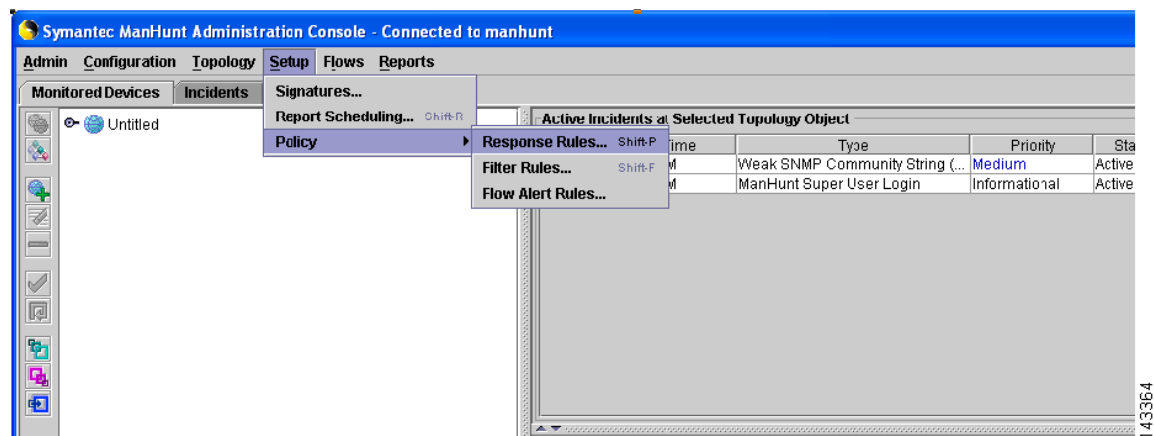
This chapter contains the following topics:

- [Symantec ManHunt Side Configuration, page 8-1](#)
- [MARS Side Configuration, page 8-2](#)

## Symantec ManHunt Side Configuration

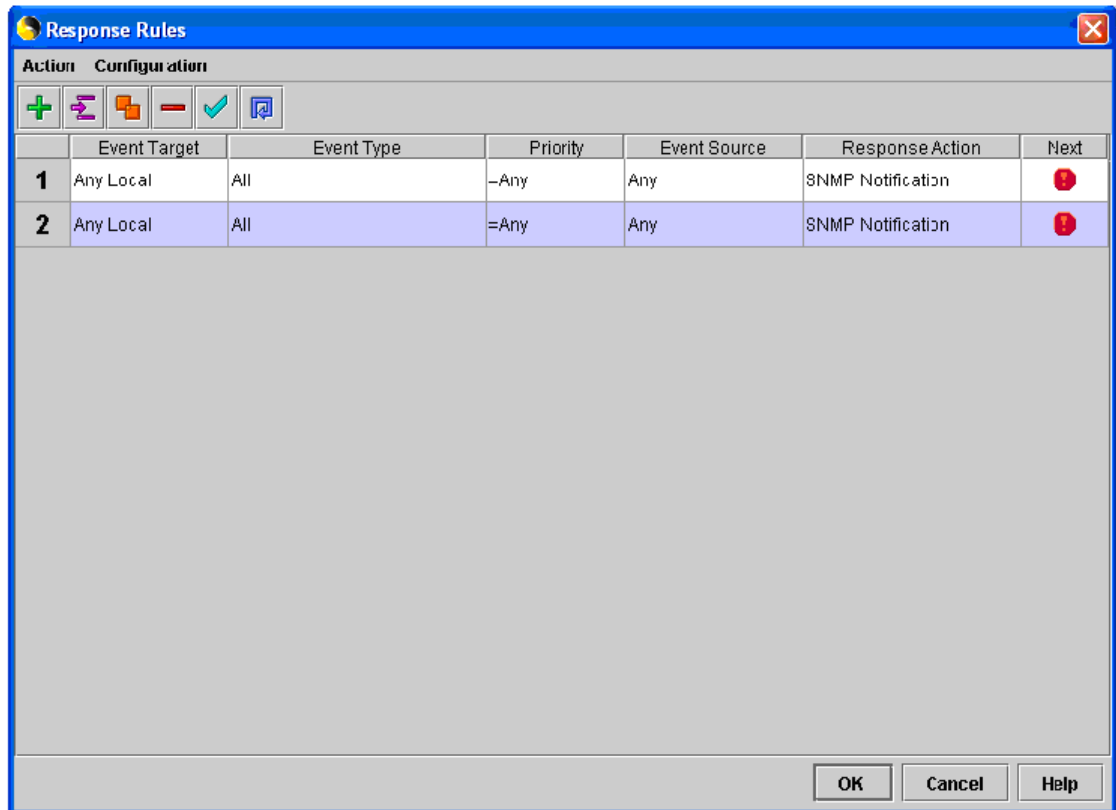
- Step 1** Login to the Symantec ManHunt with appropriate username and password.
- Step 2** In the main screen, click **Setup > Policy > Response Rules**, then Response Rules window will appear.

**Figure 8-1** ManHunt Configuration



- Step 3** In the Response Rules window, click **Action > Add Response Rules**.
- Step 4** Click in the field of Response Action

Figure 8-2 ManHunt Response Rule Config



**Step 5** In the left menu, click **SNMP Notification** and enter the following information:

- **SNMP Manager IP address**—Reporting IP address of MARS
- **Maximum number of SNMP notification**—(Example: 100000).
- **Delay between SNMP notification (mins)**—(Example: 1 min)

**Step 6** Click **OK** to return to main screen.

## MARS Side Configuration

This section contains the following topics:

- [Add Configuration Information for Symantec ManHunt 3.x, page 8-2](#)

## Add Configuration Information for Symantec ManHunt 3.x

**Step 1** Click **Admin > System Setup > Security and Monitor Devices > Add**.

**Step 2** From the Device Type list, select **Add SW Security apps on a new host** or **Add SW security apps on existing host**.

- Step 3** Enter the Device Name and IP addresses if adding a new host.
- Step 4** Click **Apply**
- Step 5** Click **Reporting Applications** tab
- Step 6** From the Select Application list, select **Symantec ManHunt 3.x**
- Step 7** Click **Add**.
- Step 8** For attack path calculation and mitigation, specify the networks being monitored by the sensor. Do one of the following:
- To manually define the networks, select the **Define a Network** radio button.
    - a. Enter the network address in the Network IP field.
    - b. Enter the corresponding network mask value in the Mask field.
    - c. Click **Add** to move the specified network into the Monitored Networks field.
    - d. Repeat as needed.
  - To select the networks that are attached to the device, click the **Select a Network** radio button.
    - a. Select a network from in the Select a Network list
    - b. Click **Add** to move the specified network into the Monitored Networks field.
    - c. Repeat as needed.
- Step 9** To save your changes, click **Submit**.
- Step 10** To enable MARS to start sessionizing events from this module, click **Activate**.
-

