



# CHAPTER 13

## eEye REM 1.0

To configure MARS to pull this REM data, you must perform three tasks:

1. Configure eEye REM to correlate the required data, ensuring that the data is current.
2. Add the eEye REM server to MARS using the web interface.
3. Schedule the interval at which the eEye REM server data is pulled by MARS.

This chapter contains the following topics:

- [Configure eEye REM to Generate Required Data, page 13-1](#)
- [Add and Configure the eEye REM Device in MARS, page 13-2](#)

## Configure eEye REM to Generate Required Data

To configure eEye REM to provide the correct data to MARS, follow these steps:

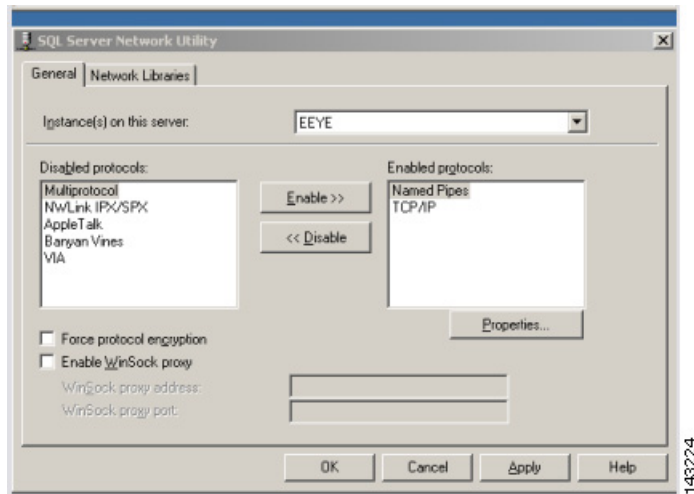
- Step 1** Run command `svrnetcn` at the DOS prompt on the host where eEye REM 1.0 is installed.

```
C:\WINNT\system32\cmd.exe
Microsoft Windows 2000 [Version 5.00.2195]
(C) Copyright 1985-2000 Microsoft Corp.

C:\Documents and Settings\Administrator>svrnetcn
'svrnetcn' is not recognized as an internal or external command,
operable program or batch file.

C:\Documents and Settings\Administrator>svrnetcn
C:\Documents and Settings\Administrator>cd \
C:\>
C:\>
C:\>
C:\>svrnetcn
C:\>_
```

- Step 2** In the SQL Server Network Utility dialog box, enable TCP/IP by moving **TCP/IP** from the Disabled Protocols list to Enabled Protocols list.



**Step 3** Click **Apply**.

## Add and Configure the eEye REM Device in MARS

To add the eEye REM device in MARS, follow these steps:

- Step 1** Select **Admin > System Setup > Security and Monitor Devices > Add**.
- Step 2** Select **Add SW Security apps on a new host** or **Add SW security apps on existing host** from the Device Type list.
- Step 3** Enter the device name and IP addresses if adding a new host.
- Step 4** Click **Apply**.
- Step 5** Click the **Reporting Applications** tab.
- Step 6** From the Select Application list, select **eEye REM 1.0**.
- Step 7** Click **Add**.

**Step 8** Enter the following information:

- **Database Name**—The name for this database.
- **Access Port**—The default access port is 1433.
- **Login**—The login information for the database.
- **Password**—The password information for the database.

**Step 9** Click **Submit**.

**Step 10** Click **Apply**.

Once you activate this device (click **Activate** in the web interface), you must define the schedule at which MARS should pull data from it. For more information, see [Scheduling Topology Updates, page 1-18](#).

---

