



# APPENDIX **A**

## **Security Manager Server Installation GUI Reference**

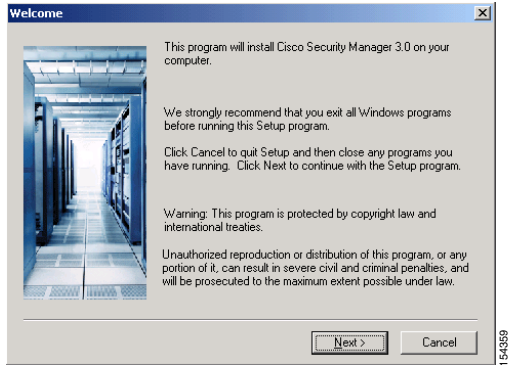
---

The installation application prompts you to make important selections from many possible options. The options that you select must be appropriate for your network environment. See [Installing Server Applications, page 4-4](#).

This appendix describes and illustrates your options.

**At this prompt:****You have these options:**

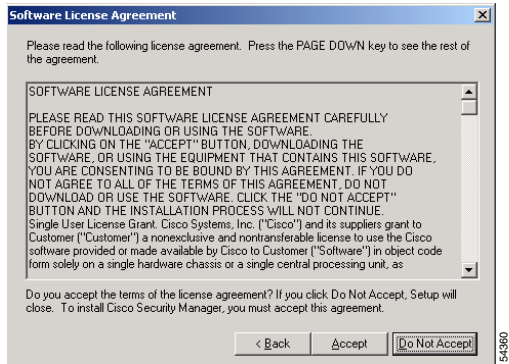
1.



154359

**Next**— Setup continues.**Cancel**— Setup stops. Installation does not occur. You can exit all other running applications, then restart Setup.

2.

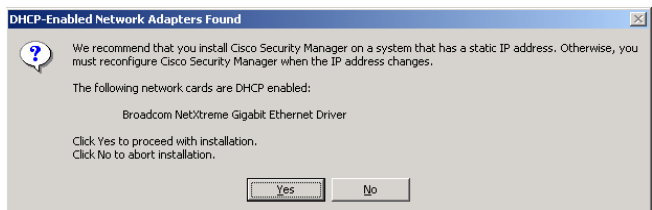


154360

**Back**— Setup returns to the previous prompt.**Accept**— You agree to the license. Setup Continues.**Do Not Accept**— You decline the terms of the license. Setup stops. Installation does not occur.

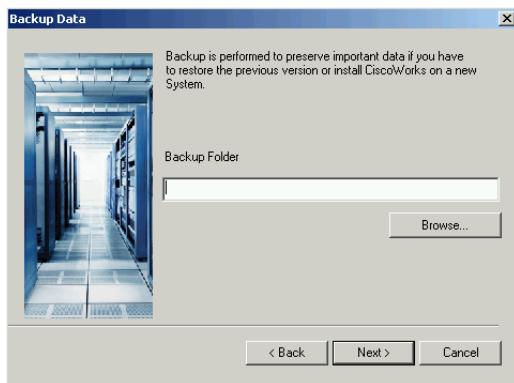
**At this prompt:**

3. *Some installations do not display this prompt:*



**Note** If the server has more than one IP address, disable all but one address. The Security Manager installer displays a warning if it detects any dynamic IP addresses on the target server. Dynamic addresses are not supported.

4. *First-time installations do not display this prompt:*



**Note** If this prompt appears, the backup is mandatory. You cannot complete the installation, reinstallation, or upgrade until you create a server backup.

**You have these options:**

**Yes**—Setup continues.

**No**—Setup stops. Installation does not occur. You can assign a static IP address, then restart Setup.

**Backup Folder**—(Optional) Enter the full folder pathname in which to save the backup.

**Browse**—(Optional) Navigate to a folder other than the default.

**Back**— Backup returns to the previous prompt.

**Next**— Backup continues.

**Cancel**— Setup stops. The backup does not occur. Installation does not occur. You can exit all other running applications, then restart Setup.

**At this prompt:**

5. *First-time installations do not display this prompt:*

**You have these options:**

**Path**— Not editable. Shows the full pathname of the selected folder in the Directories tree.

**Directories**— From the hierarchical tree, select a folder in which to save the backup.

**OK**— Your backup is saved to the location that you specify.

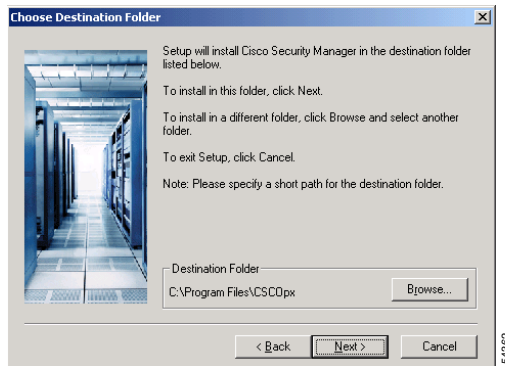
**Cancel**— The Select Backup Folder window closes. You regain access to the Backup Data window.

**Drives**— Select a local volume. The Directories tree refreshes to match your selection.

**Network**— Select a network volume. The Directories tree refreshes to match your selection.

**At this prompt:**

6. *Upgrades do not display this prompt. Nor do other installations if Common Services is already installed:*



**Note** We recommend that you use the default folder location.

If a reinstallation fails because files remain in the folder that you use, you can manually back up and delete all such files, then delete all subfolders from the folder so that it is empty when you retry the reinstallation.

If you specify a folder other than the default folder, make sure that it does not contain any files and has fewer than 256 characters in its pathname.

**You have these options:**

**Browse**—Navigate to a folder other than the default, then click **OK** to confirm your selection.

**Back**—Setup returns to the previous prompt.

**Next**—Setup continues. It installs files in the folder that you specified.

**Cancel**—Setup stops. Installation does not occur.

**At this prompt:****7. *Some installations do not display this prompt:***

The selected folder, *<pathname>* is not empty. Mixing new and existing files can cause severe problems during installation. Please remove all files from this folder or choose another folder to install the product.

**You have these options:**

**Choose another folder to install Cisco Security Manager**—If you click **Next**, Setup returns to the “Choose destination folder” prompt.

**Use selected folder to install Cisco Security Manager**—If you click **Next**, Setup continues.

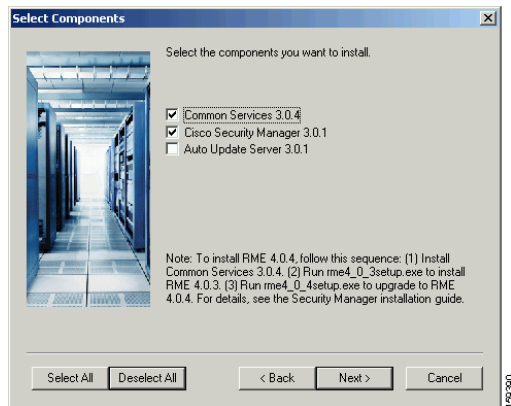
**Back**—Setup returns to the previous prompt.

**Next**—Based on your selection, Setup either directs you to specify a new folder or it installs important files in the folder that you specify.

**Cancel**—Setup stops. Installation does not occur.

**At this prompt:**

8.



**Note** When you perform an inline upgrade from Security Manager 3.0.1 to Security Manager 3.1, the Auto Update Server 3.1 check box in the component selection screen of the installation wizard is grayed out and selected by default. As a result, AUS 3.1 is always installed on your server system, leaving you with no choice to deselect it during inline upgrade. Also, if Cisco Secure ACS was integrated with Security Manager before the upgrade, Auto Update Server is displayed in the Shared Profile Components and Group Setup pages of the CiscoSecure ACS interface after you complete the inline upgrade.

**You have these options:**

**Select All**— You select the check boxes for all components.

**Deselect All**— You clear all check box selections.

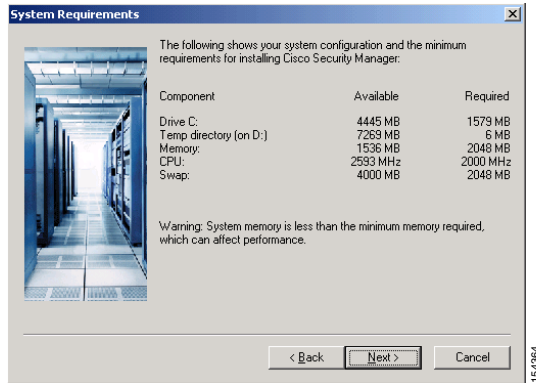
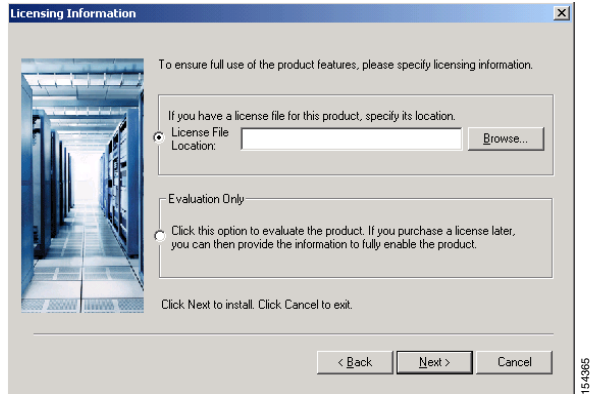
**Back**— Setup returns to the previous prompt.

**Next**— Setup continues. It installs only the components that you select.

**Cancel**— Setup stops. Installation does not occur.

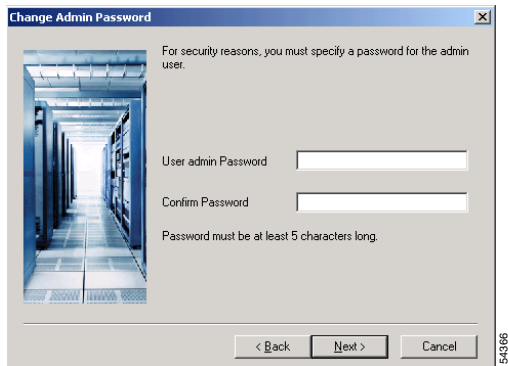
**At this prompt:**

9.

10. *Some installations do not display this prompt:***You have these options:****Back**—Setup returns to the previous prompt.**Next**—Setup continues.**Cancel**—Setup stops. Installation does not occur.**License File Location**—Enter the full pathname of the license file or click **Browse** to find it.**Note** If you have more than one license file, specify the base license.**Evaluation Only**—Enable the free 90-day evaluation period.**Back**—Setup returns to the previous prompt.**Next**—Setup continues. It applies the license file that you specified or it begins the free 90-day evaluation, based on your selection.**Cancel**—Setup stops. Installation does not occur. You can exit all other running applications, then restart Setup.

**At this prompt:**

11. *Some installations do not display this prompt. It appears only when you install Common Services:*



**Note** The admin account can see everything in the Security Manager GUI and has full read/write privileges for all tasks and options.

**Tip** Passwords must be at least 5 characters long, but longer passwords are more secure.

**You have these options:**

**Admin Password**—Enter the password to associate with the admin username.

**Confirm Password**—Enter the password again.

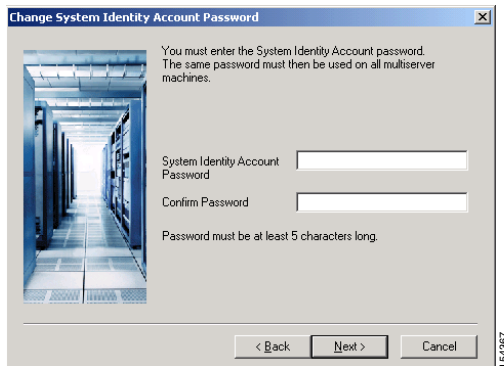
**Back**—Setup returns to the previous prompt.

**Next**—Setup continues.

**Cancel**—Setup stops. Installation does not occur.

**At this prompt:**

12. *Some installations do not display this prompt. It appears only when you install Common Services:*



**Note** The System Identity account can see everything in the Security Manager GUI and has full read/write privileges for all tasks and options.

**Tip** Passwords must be at least 5 characters long, but longer passwords are more secure.

**You have these options:**

**System Identity Account Password**—Enter a password to associate with the System Identity account username.

**Confirm Password**—Enter the password again.

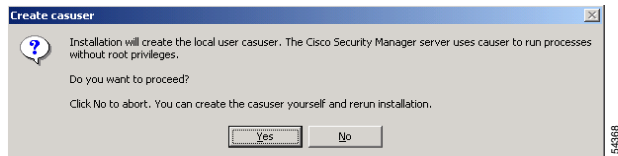
**Back**—Setup returns to the previous prompt.

**Next**—Setup continues, prompting you to confirm your creation of the System Identity account. You must click **Yes**, or installation stops.

**Cancel**—Setup stops. Installation does not occur.

**At this prompt:**

13.

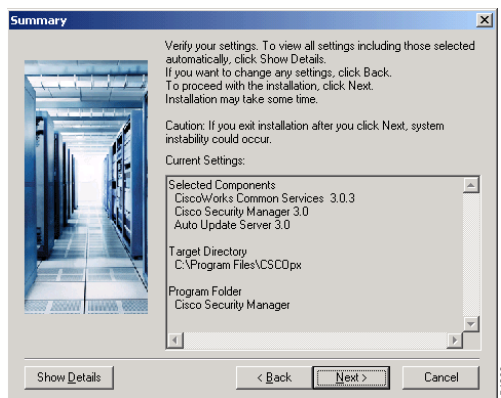


**Note** The casuser account can see everything in the Security Manager GUI and has full read/write privileges for all tasks and options.

14.

**Caution**

If you click **Show Details**, then click **Yes**, you see a warning that the admin and casuser account passwords will be revealed in cleartext. The database password is also revealed.

**You have these options:**

**Yes**—Setup continues. The casuser account is created.

**No**—Setup stops. Installation does not occur. The casuser account is not created at this time. You can create the account at a later time and restart Setup.

**Note** Text in the Current Settings area can differ slightly from the illustration.

**Show Details**—View a detailed summary of your Setup selections.

**Back**—Setup returns to the previous prompt.

**Next**—Setup continues, prompting you to confirm your creation of the casuser account. You must click **Yes**, or installation stops.

**Tip** After you click Next, an error message might tell you that files are running in another process and cannot be stopped automatically, but must be stopped before the installation can succeed. In this case, stop all applications, close all browsers, close all CLI prompts, then try again. If the message persists, restart the server and try again.

**Cancel**—Setup stops. Installation does not occur.

