



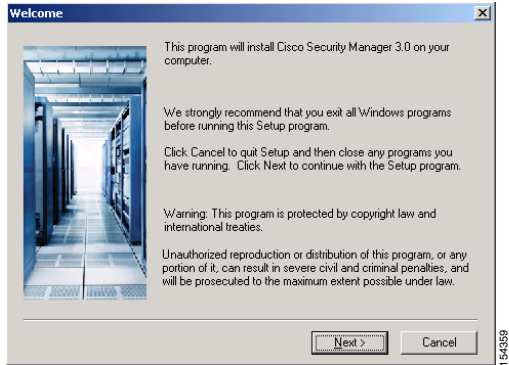
Security Manager Server Installation GUI Reference

The installation application prompts you to make important selections from many possible options. The options that you select must be appropriate for your network environment. See [Installing or Upgrading Server Applications, page 1-3](#).

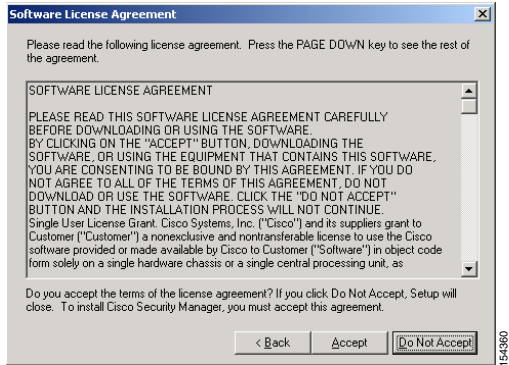
This appendix describes and illustrates your options.

At this prompt:

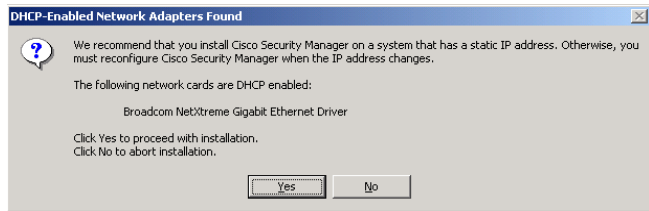
1.



2.

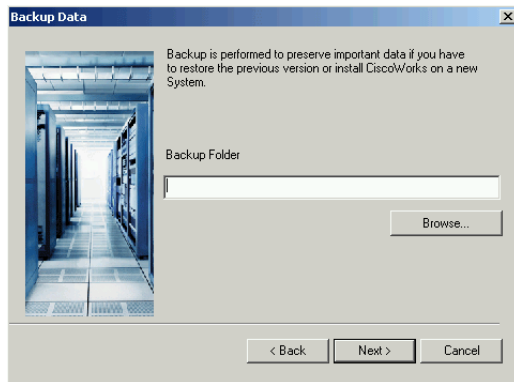
**You have these options:****Next**— Setup continues.**Cancel**— Setup stops. Installation does not occur. You can exit all other running applications, then restart Setup.**Back**— Setup returns to the previous prompt.**Accept**
Continues.**Do Not Accept**— You decline the terms of the license. Setup stops. Installation does not occur.

3. *Some installations do not display this prompt:*



Note If the server has more than one IP address, disable all but one address. The Security Manager installer displays a warning if it detects any dynamic IP addresses on the target server. Dynamic addresses are not supported.

4. *First-time installations do not display this prompt:*



If this prompt appears, the backup is mandatory. You cannot complete the installation, reinstallation, or upgrade until you create a server backup.

Yes

No

Backup Folder—(Optional) Enter the full folder pathname in which to save the backup.

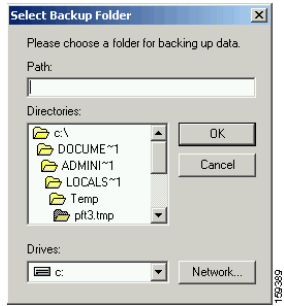
Browse—(Optional) Navigate to a folder other than the default.

— Backup returns to the previous prompt.

— Backup continues.

— Setup stops. The backup does not occur. Installation does not occur. You can exit all other running applications, then restart Setup.

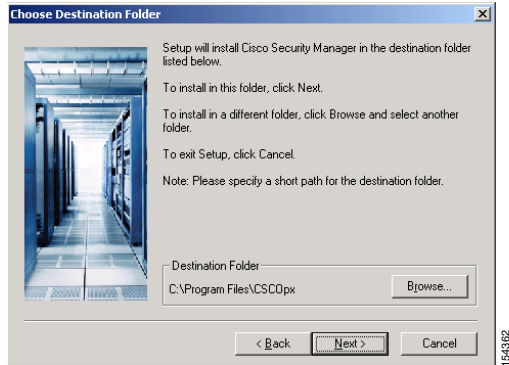
5.

**Path**

Directories—From the hierarchical tree, select a folder in which to save the backup.

OK**Cancel****Drives****Network**

6. *Upgrades do not display this prompt. Nor do other installations if Common Services is already installed:*



We recommend that you use the default folder location.

If a reinstallation fails because files remain in the folder that you use, you can manually back up and delete all such files, then delete all subfolders from the folder so that it is empty when you retry the reinstallation.

If you specify a folder other than the default folder, make sure that it does not contain any files and has fewer than 256 characters in its pathname.

—Navigate to a folder other than the default, then click to confirm your selection.

—Setup returns to the previous prompt.

—Setup continues. It installs files in the folder that you specified.

—Setup stops. Installation does not occur.

At this prompt:

7.

<pathname>

You have these options:

Choose another folder to install Cisco Security Manager **Next**
returns to the “Choose destination folder” prompt.

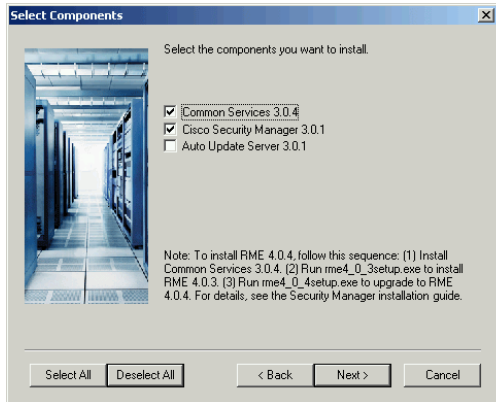
Use selected folder to install Cisco Security Manager **Next**

Back — Setup returns to the previous prompt.

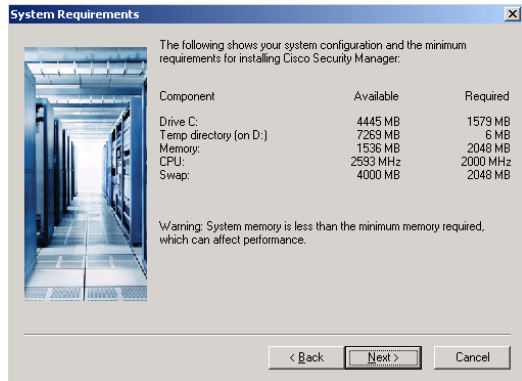
—Based on your selection, Setup either directs you to specify a new folder or it installs important files in the folder that you specify.

—Setup stops. Installation does not occur.

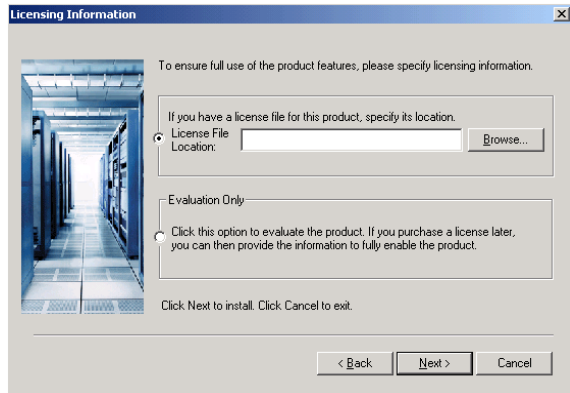
8.



9.



10.



License File Location

Browse

Note

Evaluation Only—Enable the free 90-day evaluation period.

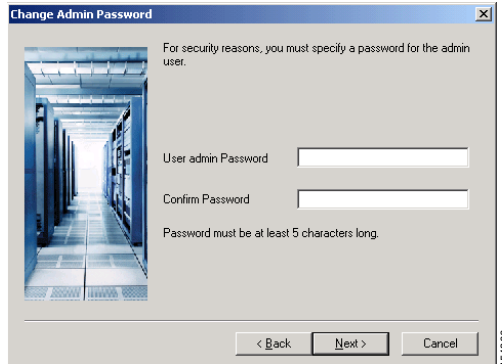
—Setup returns to the previous prompt.

—Setup continues. It applies the license file that you specified or it begins the free 90-day evaluation, based on your selection.

—Setup stops. Installation does not occur. You can exit all other running applications, then restart Setup.

At this prompt:

Some installations do not display this prompt. It appears only when you install Common Services:



Security Manager GUI and has full read/write privileges for all tasks and options.

Tip**You have these options:****Admin Password****Confirm Password****Back****Next****Cancel**

Some installations do not display this prompt. It appears only when you install Common Services:



System Identity Account Password

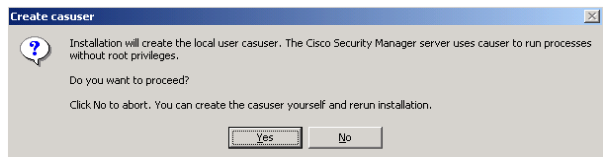
Confirm Password

Back

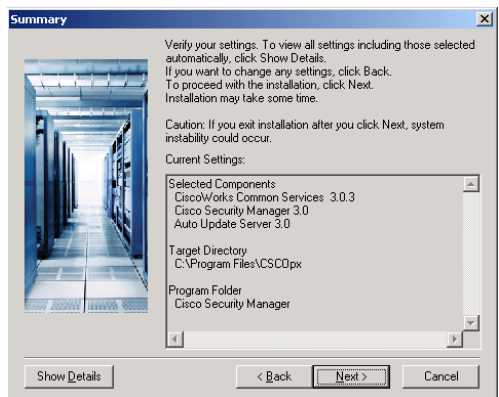
Next

Yes

Cancel



Caution



Note

— View a detailed summary of your Setup selections.

— Setup returns to the previous prompt.

— Setup continues, prompting you to confirm your creation of the casuser account. You must click , or installation stops.

Tip After you click Next, an error message might tell you that files are running in another process and cannot be stopped automatically, but must be stopped before the installation can succeed. In this case, stop all applications, close all browsers, close all CLI prompts, then try again. If the message persists, restart the server and try again.

— Setup stops. Installation does not occur.